



# Philatelic Society of Lancaster County

**The James Buchanan Chapter 173 of the  
American Philatelic Society  
American Topical Association Chapter 118  
Website: <https://lcps-stamps.org>**

**2<sup>nd</sup> Wednesday/Month-Meet in Person at Landis Homes at 6:30 p.m.  
4<sup>th</sup> Wednesday/Month-Meet Virtually at 6:15 p.m.**



## **The Veranda Chronicles**

As I write this month's column, it is with a tinge of melancholy. In a little more than a week we will have the Boston 2026 International Stamp Exposition...and I won't be able to attend. Work and family are keeping me going much more than full-time. This is the once every ten-year event since 1913, and Boston will be number twelve. This event also coincides with the 250<sup>th</sup> Birthday of the United States of America. We philatelists have two big galas to celebrate this season. There is a lot of early U.S. history to see in Boston, and all arrangements are being taken to make it available to the show attendees.

However, I am aware of some club members who will make the show, and while a bit envious, I wish you the best of the show. I know that you'll enjoy the exhibits, find all the items you have been seeking for your collection, and have some money left over for the return trip home. But do enjoy. I have been involved with some of the planning of these shows in the past and will surely miss attending this one. Besides the philatelic "stuff" that one can see and buy at the show, it is also a time to catch up with other friends and collectors, many of whom we share common collecting interests with.

Maybe it was that milestone birthday that I was harping about in a previous column, but I am realizing that in the hobby, the people are becoming as important to me as the collections. As a kid collector what mattered most at that age was filling those spaces in my little album. I collected solo and with friends; it did not matter. We went on to trade and have fun when the opportunity to share was there. Now looking back over those long years as we grew together, those friendships are most important today.

All is not lost; I have been enjoying Boston-2026 vicariously by reading this month's philatelic journals and newsletters. They are all about Boston, as the hobby is ready to go. Between the journals and myriad websites describing and promoting Boston '26, I have no need to repeat it all here. Whatever you wish to know about the show, you will find contained in these resources.

However, one item caught my attention; in the May 2026 issue of *The American Stamp Collector and Dealer* (Pg.-40) was a pertinent article, and I would like to highlight some of the points for you, though I am not doing it thorough justice for lack of space. This article takes me back to my previous columns on Artificial Intelligence. It is about the internet and the hobby, and we are aware of how much the internet and AI are tightly connected. The columnist, John Hotchner, is one of the hobby's lead writers and researchers. He was writing when I started to collect in the mid-1970s and subscribe to the magazines. He is still at it and remains a real hero of mine. John's title is *The Internet: A Double-Edged Sword*.

For the positive edge of that sword, Hotchner discusses how much he has gained by the internet in the ease and speed for the depth and breadth of the research for his articles during the last few decades. He admitted that he has not needed the library for years for information. In addition to this, he adds that it is so easy to contact his hobby colleagues with email, texting, Facetime, and Zoom among others. You need a quick meeting...done. You need an answer...done. I think we can all agree to this.

But he has concerns regarding the other edge of the sword. Some collectors no longer feel the need for joining a local club or specialty society; one can save time and a few dollars in dues this way. There are many ramifications here. It is organized philately that Hotchner sees as "the skeleton upon which the actual practice of the collector depends."

Clubs and Societies need both manpower and finances to run. And as societies are the primary source of recruitment and mentorship of new collectors - who we desperately need - without collector growth, the hobby will be in jeopardy. Operationally this poses the question of whether

there will be sufficient dealers with both depth and breadth in their wares, with a supply train containing all the collecting accoutrements that we need in the pursuit of our hobby. The answer to these questions depends on whether new collectors are rising up to purchase our treasures.

Further, the internet has greatly decreased the need for first-class mail, written correspondence from one person to another, formerly known as letters. This leads to fewer demands for new stamps which further raises the price of the next Forever stamps. Are we to follow Denmark and no longer produce postage stamps or perhaps even lose our home delivery? And what of the lost art of letter writing? You can see where this is going. These letters contain the history of our times, detailing our lives, our families, and current events. They remain hard copy while most computer messages disappear. Texts are fine, but they are not prose and they do not last!

All this said, there are both the pros and cons with the AI and Internet connection and its influence on the hobby. John Hotchner has clearly depicted what is happening and where it is likely to lead. My biggest take away for what the local club can do, especially the PSLC, is to recruit new members to include both new and seasoned collectors. This will help us do our part to keep the ball rolling.

And speaking of clubs, PSLC member Kieth Lichtman, now in Florida, has recently formed a stamp club in his neighborhood and edits their newsletter. You have probably received a copy of this issue via Hal Klein with Keith's permission.

And I'll end on a final AI note. Paul just shared that he has a philatelic AI specialist on the speaking schedule for one of our future Zoom meetings, and they are working out the date and other details. He cautions that by the time of this talk in early 2027, the speaker will have to greatly revamp his current PowerPoint to accommodate all the technical developments that will take place between now and then. It will be an interesting journey.

See you all on Wednesday,

Dr. Charles J. DiComo, President  
[charlesdicomo@gmail.com](mailto:charlesdicomo@gmail.com)

## Upcoming Programs



### **The Decimal Era of Canadian Postal History**

**By Ronald E. Majors, OTB, Ph.D.**

**13 May 2026**

**6:30 p.m. Landis Homes**

**Hosted by Dan Martin**

The decimal era of Canadian postal history (1859-1868) took place after the pence era ended. Due to its proximity sharing a 5,500 mile border with loosely organized provincial governments and the Hudson Bay Company, Canada began to align itself to the United States and adopted the cents and dollar as its official currency. The US Civil war brought Canada provinces closer together on the issue of slavery, already forbidden throughout the British Empire since 1833. In fact, over 50,000 Canadian joined the Union Army and Navy with only a few joining the Confederate effort. Near the end of the decimal period, Confederation (1867) brought together the loosely held provincial districts. Later, other geographical entities such as British Columbia and Newfoundland joined the Confederation.

Other processes and changes to improve mail delivery throughout the decimal era took place. Special postal rates arose such as cross river ferrige rates, neighboring town rates, parcel post for small packages, soldier's rates, photograph rates, non-letter mail such as circular rates to improve business mail were instituted. Money letters were replaced with registered mail with more security features to allow closer tracking. To improve business results, the postal regulations allowed the introduced new and more innovative ways of advertising, using illustrated covers. Colorful and sometimes beautifully engraved envelopes promoted religious-, patriotic-, military-, manufacturing- and special interest-themes. But probably the biggest area of attention was the continued use of stampless covers, especially to exotic places for which postage rates were sometimes misunderstood or unknown. Often stampless covers help us understand the postal rates that were in effect at the time. It is estimated that approximately 50% of the mail was sent stampless and the postmasters at the recipient side of the mail business were entrusted to collect the "proper" postage for a given mailing destination. A small penalty was imposed for the use of stampless letters. This talk will give an overview of Canadian decimal franked and stampless mail to some very rare and distant locations and rates.

## Collecting National Airmail Week Material: More Than Meets the Eye

By Jim Haxby

27 May 2026

6:15 p.m. via Zoom



At first glance, the subject of National Air Mail Week (NAMW) philately seems simple enough. In 1938, numerous post offices around the country used rubber stamps to apply cachets of local significance to air mail covers that were dispatched during a special week in May, 1938. But when we look a little deeper, we find that not all covers were quite so straightforward. Some towns had more than one cachet design. Some had a different cachet color for each day of the week. And sometimes a common cachet design was used throughout a particular county. Moreover, there was extensive correspondence between postmasters in which they traded separate impressions of the NAMW cachets. This presentation is a general introduction into the intriguing world of National Air Mail Week material.

## PSLC Calendar

*Descriptions for many of these programs are found on the [PSLC website](#)*

**May 13:** The Decimal Era of Canadian Postal History. Ronald E. Majors, OTB, Ph.D.

**May 17:** PSLC Outdoor Bourse. **Cancelled.**

**May 27:** Collecting National Airmail Week Material: More than Meets the Eye. Jim Haxby

**June 10:** PSLC Spring Auction

**June 24:** The Whimsical World of Philatelic Artist Joun Coulthard. Rick Barrett

**July 8:** Air Crash Covers: Preserving the Legacy of Airmail Pioneers. Mike Wilson

**July 22:** Stamping our way through History on America's 250<sup>th</sup> Birthday! Steven J. Rod

**August 12:** PSLC Annual Picnic at Manheim Township Community Park in Neffsville

**August 26:** A Journey to the Ney Post Office: A Rural Mountain Post Office in Late 19<sup>th</sup> Century  
PA. Scott Ney

**September 9:** Open

**September 23:** Gary Loew

**October 14:** PSLC Summer/Fall Auction

**October 28:** An open discussion about philately and stamp collecting: how do you do it, what do you want to share about it, and what do you want to know about it, let by Rob Sternberg

**November 11:** Society Open House and Exhibition, hosted by Len Kasper

**November 25:** Elmer Long & His "Department Store of Philately". Rick Barrett

**December 9:** PSLC Annual Holiday Dinner. Len Kasper

**December 23:** Cemil Betanov

## **Obscure**

*By Richard Colberg*

*President – Lebanon Stamp Collectors Club*

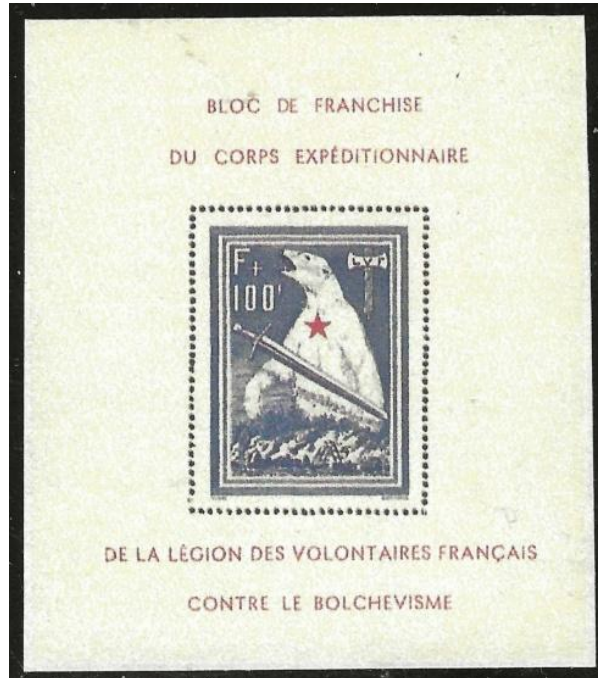
Obscure (adj.) - Not easily understood or clearly expressed; abstruse, vague.

A byproduct of being a philatelic packrat is that one ends up with a lot of really *obscure* odds and ends. That's me! A friend once told me, "If you see something that you've never seen before, buy it!" So that's how I ended up with three undenominated stamps, obviously of a war-related theme. Then a couple of years ago I found two more, clearly in the same series. Now I was curious.

The stamps were obviously French, so I started in the French Yvert et Tellier Catalogue. Lo and behold I found them listed. They are listed as "Legion Des Volontaires Français Contre Le Bolchevisme (L.V.F.). This translates to "Legion of French Volunteers Against Bolshevism". There are ten items listed here: a souvenir sheet and nine stamps. I had the last five stamps.

The Yvert et Tellier (Y&T) Catalogue states: "After the invasion of the U.S.S.R. by the German army on June 22, 1941, the L.V.F. was created on July 7, at the instigation of the collaborating movements. The L.V.F. issued several charitable stamps which, although sold exclusively in Paris, can be found on letters from soldiers of the Eastern Front".

Each stamp, including the souvenir sheet, has a value expressed as F + (surcharge). The write-up is not clear on the face value of the stamp. Was it the then-current first-class postage rate plus the surcharge? Or was it just the surcharge? That, too, is *obscure*!



The L.V.F. souvenir sheet. Perforated 12 ½, it also exists imperforate at twice the price as the perforated version. F + 100 F, 1941.



Also issued in 1941 was this pair of airmail stamps. The dark green stamp, apparently without surcharge, was for official airmail. The red stamp, with 10 F surcharge, was issued for “special” airmail. Was this “special delivery”?

450,000 pairs (sets) of stamps were printed. 141,000 were sold by subscription between November 10 and 20, 1941. They were then sold to the general public from December 12 to 15.



In 1942 the previous airmail set was overprinted “Front De L’Est / Ostfront” in the upper left corner. The overprint refers to the Eastern Front. This pair had the same values as the previous set. 300,000 pairs of stamps were printed. 137,000 sets were sold by subscription on January 15, 1942, and then opened for sale to the public from January 20 to February 7, 1942.



The end of the series, issued in 1942. Labeled the “Borodino” series, it appears that this is in reference to the Battle of Borodino, or the Battle of Moscow, on September 7, 1812, during Napoleon’s invasion of Russia. Napoleon won this one.

The five stamps are titled, in the order seen above, *Lookout in front of a Russian village, Artillery, Tank, Soldiers of the L.V.F. and grenadiers of the First Empire, and Cavalry.*

One million sets of five stamps were printed. 450,000 sets were sold by subscription on April 20, 1942, and then made available to the public on April 30<sup>th</sup>.

The catalogue further states, "The L.V.F. then considered the issue of a set of stamps on the Franco-German rapprochement since Charlemagne but the project did not come to fruition." I suppose this refers to Charlemagne's unification of Europe in the 8<sup>th</sup> century.

I must admit to finding myself on shaky ground here with reference to European and WW II history. According to Google and Wikipedia, the Legion of French Volunteers Against Bolshevism was a unit of the German Army during World War II consisting of collaborationist volunteers from France. Officially designated the 638<sup>th</sup> Infantry Regiment, it was one of several foreign volunteer units formed in German-occupied Western Europe to participate in the invasion of the Soviet Union in 1941. The L.V.F. was mainly made up of right-wing Frenchmen and French prisoners of war who preferred fighting to forced labor in Germany.

I found these stamps readily available on Delcampe. A complete set of nine stamps plus souvenir sheet can be had for about \$300, or about half of the Y&T Catalogue value. They're also available used on cover at about \$200 each.

I wrote in another article a while back about forming mini-collections. This one would certainly qualify.

## **From the Society Archives: Memories of LANCOPEX 2019**

*Pictures and captions submitted By Dr. Charles J. DiComo, PhD*



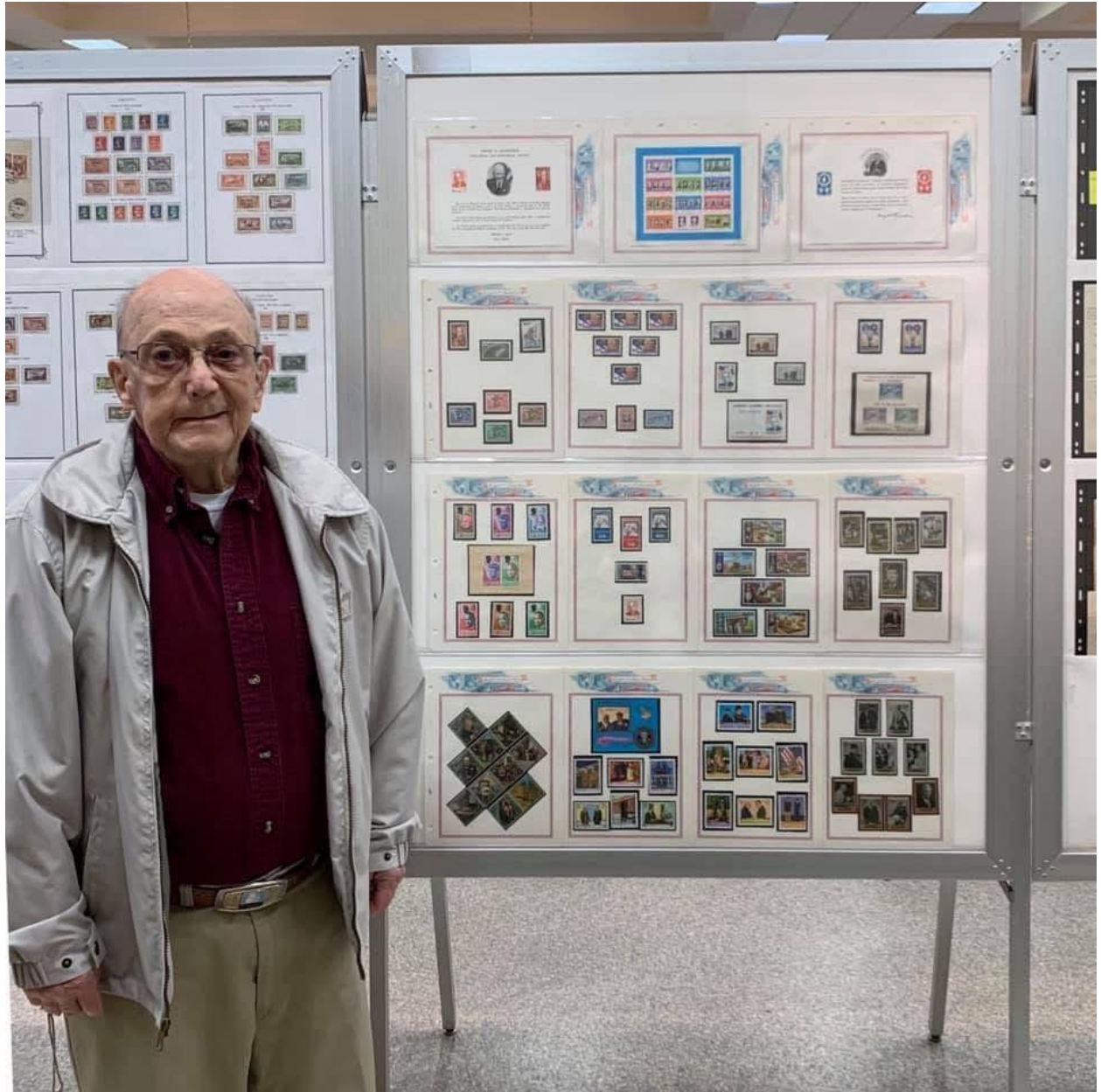




**Dr. Charles J. DiComo, PhD:** 1 Frame, “Transparent Motto Wafers/Seals on U.S. Covers”



**Paul Petersen:** 2 Frames, "Postage Stamps, Cinderella's, and other Ephemera of the 1939 New York World's Fair"



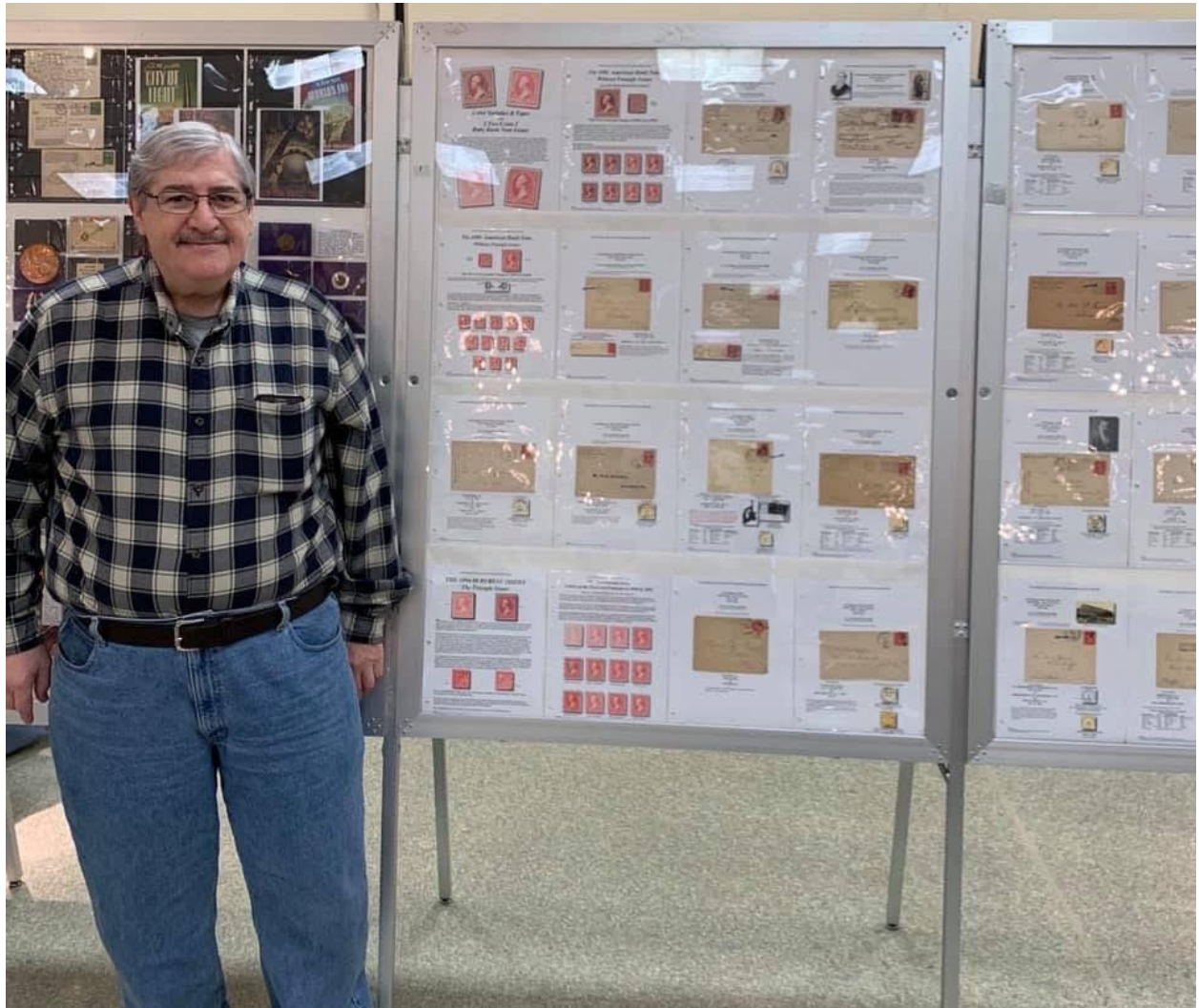
**Jay Eberly:** 1 Frame, "1939 New York World's Fair Ephemera"



**Lou DiFelice:** 1 Frame, "Miscellaneous Covers & How I Chose Them"



**Robert D. Noble: 2 Frames, "Lancaster County Covers; Precancels"**



**Hal Klein: 4 Frames, "Colors of the Baby Bank Note Issue"**



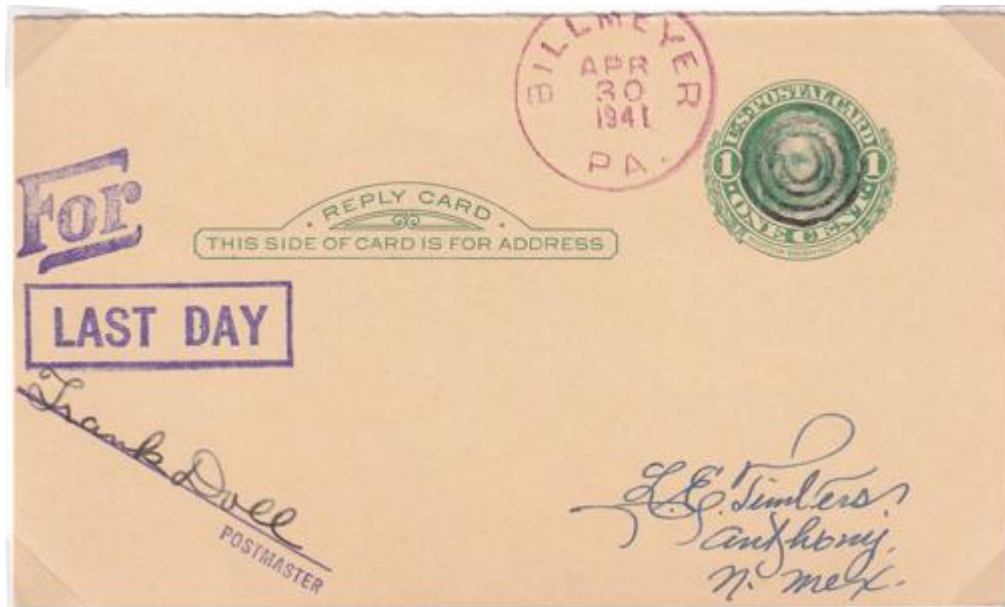
**Lucy Eyster** taking a shift at the Society table, with free stamps, periodicals, references, and applications to join our wonderful club.



The **USPS** also had a presence at LANCOPEX 2019. They had multiple tables set up with a plethora of the most current postal issues, souvenir sheets, panes, coils, booklets, etc. And Lancaster's Counties Postmaster, John W. Brodbeck, Jr. paid a visit

**Here's a link to the LANCOPEX 2019 brochure on the PSLC website:**

<https://lcps-stamps.org/wp-content/uploads/2019/04/Lancopex-2019-Brochure.pdf>



## **Billmeyer, Pennsylvania: A Lancaster County ghost town**

*By Scott Ney*

What was once a town on the Susquehanna River, along the old Pennsylvania Railroad line that hugged its banks, Billmeyer is no more. [Uncharted Lancaster](#), a website, describes it as a “once thriving company village and now a ghost of Lancaster’s industrial past.”

The town of Billmeyer’s existence is attributed to the need for high quality limestone to feed the needs of the early steel industry. Somewhat later, the Dolomite mined there helped satisfy the ever-increasing demand for steel as the country became involved in the First World War. A century ago, Billmeyer was home to more than 700 workers and their families.

By the time the United States was involved in the Second World War, the steel industry’s demand for Dolomite as an input in production declined, to the point that only 40 men worked there in the mid-1950s. Mining operations at Billmeyer ceased in 1957. The post office that operated in the village was established in 1902 and closed in 1941.

According to [Uncharted Lancaster](#), the few remaining buildings of the once thriving village of Billmeyer were demolished in 2007. Just north of the former site of Billmeyer is a landmark known as the White Cliffs of Conoy; created by many years of quarry waste dumped over the river’s bank, it serves as an enduring reminder of Billmeyer’s limestone extracting operations. Both the White Cliffs of Conoy and the former site of Billmeyer are accessible via the Northwest Lancaster County River Trail. A portion of Billmeyer’s main street now serves as part of that trail.

For those interested in learning more about the history of Billmeyer, or seeing what it's like today without visiting it, a YouTube search of "Billmeyer Pennsylvania" will turn up several videos which may help to satisfy your curiosity.



The Abandoned Ghost Town of Billmeyer - What Remains. (Lancaster PA)

21K views · 7 years ago

The Wandering Woodsman

Facebook: The Wandering Woodsman Patreon: [www.patreon.com/TheWanderingWoodsman](http://www.patreon.com/TheWanderingWoodsman) Email: ...

## On the publishing scene

2026-05-01... The Empire State Postal History Society (ESPHS) is pleased to share President, Dr. Charles J DiComo's latest article titled "First Day of Use from Canarsie Post Office", which was published in "The Excelsior!," the journal of the ESPHS, April 2026, Whole No. 43NS, pp. 14-15.

Dr. DiComo was born and raised in Canarsie, New York, a mostly residential neighborhood in southeastern Brooklyn. He is always thrilled when he can acquire a piece of local postal history.

The cover he is sharing is a recent find; a 3¢ violet postal stationery envelope depicting an embossed portrait of George Washington. It paid the first-class rate.

The cover, which had no contents, features a hand-crafted and hand-stamped cachet in violet that shows an aerial view of Brooklyn and Jamaica Bay with a helicopter flying above.

The cachet celebrates the first day of use – July 3, 1950 – at the new Canarsie Station Post Office, located at 1450 Rockaway Parkway, between Glenwood Road and Conklin Avenue.

The cover entered the mail at 9 a.m. on July 3 at the Canarsie Station Post Office, where the clerk struck cancel in black: BROOKLYN, N.Y. 15 JUL 3 9-AM 1950 and an adjacent seven-bar "CANARSIE STA." killer.

The cover is addressed to "R. Fiero, 8518 Church Lane, Brooklyn, 36-50." Church Lane is located in Canarsie, about 15 blocks southwest from the then-new post office.

Charles hopes this will be the beginning of a series of short articles on other artifacts from his home town of Canarsie.

To enjoy the full article, click: <https://lcps-stamps.org/wp-content/uploads/2026/04/DICOMO-Canarsie-Excelsior2026-04WN43-NSpp14-15.pdf>

# Excelsior!

April 2026

Whole No. 43 New Series



**Charles J. DiComo, PhD**  
ESPHS & PSLC President  
PaPHS Board of Directors  
USPCS Life Member

## “First Day of Use From Canarsie Post Office.”

Being born and raised in Canarsie, New York, a mostly residential neighborhood in southeastern Brooklyn, I am always thrilled when I can acquire a piece of local postal history. The cover I am sharing here is a recent find. I hope this will be the beginning of a series of short articles on other artifacts from my home town.



### First Day of Use From Canarsie PO

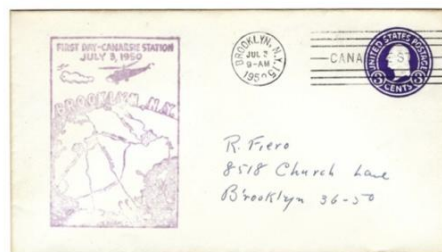
By Charles J. DiComo, PhD

Being born and raised in Canarsie, New York, a mostly residential neighborhood in southeastern Brooklyn, I am always thrilled when I can acquire a piece of local postal history. The cover I am sharing here is a recent find. I hope this will be the beginning of a series of short articles on other artifacts from my home town.

Shown is a 3-cent violet postal stationery envelope depicting an embossed portrait of George Washington. It paid the first class rate.

The cover, which had no contents, features a hand-crafted and hand-stamped cachet in violet that shows an aerial view of Brooklyn and Jamaica Bay with a helicopter flying above. The cachet celebrates the first day of use – July 3, 1950 – at the new Canarsie Station Post Office, located at 1450 Rockaway Parkway, between Glenwood Road and Conklin Avenue.

The cover entered the mail at 9



R. Fiero  
8518 Church Lane  
Brooklyn 36-50

A prestamped envelope (Scott U436) used as a first day of use item to celebrate the opening of a new post office July 3, 1950, in Canarsie, Brooklyn (above). A close-up from the cover helps tell the story.

BROOKLYN, N.Y. 15 JUL 3 9-AM 1950 and an adjacent seven-bar “CANARSIE STA.” killer.

The cover is addressed to “R. Fiero, 8518 Church Lane, Brooklyn, 36-50.” Church Lane is located in Canarsie, about 15 blocks southwest from the then-new post office.

Also shown is an 1873 Beers map of Flatlands and the location of the post office at top right. An enlarge-

CANARSIE, PAGE 15



At left, an 1873 map of Flatlands, which includes Canarsie at top right. At right, a close-up of the map includes Canarsie, from page 14.

ment shows just Canarsie and the main thoroughfare, Rockaway Parkway, which leads to Jamaica Bay.

The local newspaper clipping shown (circa July 1, 1950) announces the event with the headline: “New P.O. for Canarsie,” where Postmaster Edward J. O’Quley announced the opening and that all postal facilities, including postal savings, will be available.

The old post office lot on Rockaway Parkway today is part of a busy retail and commercial block. Canarsie still has a post office but today a half-mile away at 10241 Flatlands Ave., at East 102nd Street, according to Google Maps.

This is a great Canarsie artifact for me and my search continues.

References  
1873 Beers Map of Flatlands, Brooklyn, by Geographical Name

cludes Canarsie, which shows Rockaway Parkway to Jamaica Bay. (Geographical Name, Antiquer Maps)

#### July 3, 1950

**New P. O. for Canarsie**  
Postmaster Edward J. O’Quley has announced that the postoffice’s new Canarsie Station (Zone 36) will be opened Monday at Rockaway Parkway between Glenwood Road and Conklin Ave. All postal facilities, including postal savings, will be available.

A newspaper clipping announces the new post office for Canarsie at 1450 Rockaway Parkway.

Antiquer Maps, a specialist dealer in rare maps and other cartographic copies of the 17th, 18th, 19th, 18th and 19th centuries, as part of a cooperative project, Public Domain, Wikimedia Commons. <https://commons.wikimedia.org/wiki/File:1873Beers>

The Beers family information, Geographica. [http://www.geographica.com/index.php?option=com\\_content](http://www.geographica.com/index.php?option=com_content)

Canarsie Post Office opens, July 3, 1950 Facebook, private posting.

#### WANTED! WANTED! WANTED!!!

Your knowledge, your interests, your articles. The Excelsior! needs all types of submissions. Share your passion, even if it’s just about a simple cover. Contact the editor or president for details, including guidelines submissions of text and images. Hope to hear from you soon!

April 2026

Excelsior!

15

The Excelsior! Journal of the Empire State Postal History Society, Apr. 2026, Whole No. 43NS, pp. 14-15.

<https://lcps-stamps.org/wp-content/uploads/2026/04/DICOMO-Canarsie-Excelsior2026-04WN43-NSpp14-15.pdf>

## PSLC Meeting Minutes

### **PSLC Meeting Minutes – April 8, 2026 – Landis Homes      Attendance: 35 members and guests**

**Opening:** On April 8, 2026, the Society held its regular monthly in-person meeting at Landis Homes. Members and guests began to gather about 6:30 PM to enjoy fellowship, refreshments, a bourse and giveaways. Society President Dr. Charles DiComo called the meeting to order at approximately 7:00 PM with a variety of greetings and announcements

**Door Prizes and Auction:** Approximately 30 door prize items were given away by random drawing. In addition, an auction of approximately 20 donated items was conducted, with proceeds to benefit the Society.

Following the auction, President DiComo introduced Ron Lesher as our feature presenter for the evening

**Feature presentation:** “Pennsylvania Taxation of Full Strength Beer” by Ron Lesher

Ron presented three fascinating aspects to the taxation of full-strength beer. First, there was the joint use of federal and state revenue stamps on barrel beer. Second, was the PA battle with the state of Delaware on the taxation of beer provided by a neighboring state. Last, was the evidence that the Pennsylvania tax on beer was paid during World War II when metal rationing was in effect. The slides accompanying the presentation showed examples of evidence of tax payment via revenue stamps, proprietary labels and even by way of bottle caps.

Following the presentation, there was an active question and answer period. The meeting was adjourned at approximately 7:45 pm. Many stayed around for further conversation and camaraderie.

### **PSLC Meeting Minutes – April 22, 2026 - virtual mtg via Zoom      Attendance: 18 members and guests**

**Opening:** The meeting was called to order at 6:30 PM by Society President Dr. Charles DiComo. He turned the meeting over to Paul Petersen to introduce our main presenter for the evening.

**Feature presentation:** “The Greenland Parcel Post Stamps,” by Dr. Jaume Balsells

Widely recognized as Greenland’s first adhesive stamps, these highly popular stamps were issued by the Danish government-owned Royal Greenland Trade Office (KGH) under authorization of the Danish Post. They were used to pay postage for shipment of parcels by the KGH between Copenhagen and Greenland and vice versa between 1905 and 1938. This was a limited service to a remote part of the world, running only a few sailings a year during the summer months and

serving primarily the few hundred Danish nationals residing in Greenland during the early years of the 20th century. Parcels consisted mostly of personal items and newspapers, which were the only way for Greenland residents to keep abreast of news from Denmark and the rest of the world. The presentation will cover the history of the stamps, philatelic aspects of interest such as printings, varieties and errors, postal history and usages both postal and fiscal.

The presentation was followed with a robust question and answer period.

After the presentation, the meeting was adjourned at approximately 7:45 PM.

Respectfully submitted,

David Weichert  
Secretary

## **Treasurer's Report: April 2026**

*Submitted by Lou DiFelice*

Opening balance: 4/1	\$7,423.687
Income	430.00
Expenses	<u>176.00</u>
Ending balance: 2/28	\$7,677.68
CD's	\$6,166.78
#4101	3,768.45
#4901	2,398.33

## **Stamp Shows, Bourses, and Gatherings**

**July 19, 2026: K2 Lancaster Stamp Show, on Sunday from 10:00 AM – 4:00 PM at the Farm & Home Center of Lancaster County, 1383 Arcadia Road, Lancaster, PA 17601.**

Affiliated Dealers: K2 Stamp Mobile (K2 Stamps & Collectibles), Doug McCullough, Frank Soeder, Leslie Botte, Hugh Clark, David Lengyel, Wayne Gehret, Tony Coccio, Jack Zerby & Ward Wilcox.

Table fee is \$120 for 8 feet "L's" (8" front & 8" side) with an 8" back table. Setup starts at 8:00 AM. For more info, contact Kevin Kellman at [k2stamps@gmail.com](mailto:k2stamps@gmail.com) or +1 (301) 524-9562.

The next K2 Sunday Lancaster Stamp Shows for 2026 are scheduled for July 19 and December 13.

**Just added: K2 Lancaster Stamp Show, on Sunday, August 16, 2026. Stay tuned for more details!**



# BOSTON 2026 WORLD EXPO

**May 23-May 30, 2026: Boston 2026 World Expo, at the Boston Convention & Exposition Center (BCEC), Boston, MA.**

Boston will be the world's center of philately for eight days in 2026, as the twelfth international philatelic exhibition of the U.S. gathers at the BCEC. To be held during Memorial Day week (May 23–30, 2026) in the Seaport section of the city, Boston 2026 World Expo will be a significant part of the country's 250th anniversary festivities. In a 352,000 square foot contiguous exhibition area, Boston 2026 will be hosting a large dealer bourse, as well as a sizable postal administration bourse, and society presence. There will be an FIP competitive exhibition of approximately 3,500 frames, plus other special/court of honor exhibits, as well as a large FIP literature competition. Boston 2026 will be hosting hundreds of meetings/presentations in 40+ meeting rooms of various sizes. A large opening ceremony and closing awards dinner will be staged using the BCEC's banquet room facilities. Travelers from out of town will appreciate that Boston's Logan Airport and Amtrak's South Station are less than 15 minutes away from the BCEC, and that eight show hotels will be within walking distance. And best of all, attendance is FREE! For more information, visit the [Boston 2026 homepage](#).

[Boston 2026 World Stamp Show, Inc. – The Twelfth International Philatelic Exhibition of the United States](#)

**BALPEX and Americover 2026**  
88th Annual Stamp Exhibition & Bourse  
**August 7 – 9**  
Marriott BWI Airport, 1743 W Nursery Rd, Linthicum Heights MD  
Show Hours: Friday & Sat 10:00-6:00, Sun 10:00-3:00  
Free Admission & Parking, Special Hotel Rate, Restaurants nearby.

**Celebrate the 250th Anniversary of the United States**

**An APS World Series of Philately Show**  
General & Regional Meetings:  
**American First Day Cover Society**  
**Eire Philatelic Association**  
**AAPE Youth Championship**  
**ATA, BNAPS, GPS, ESPER, Postcrossing Event**

Dealers / Exhibits, WSP and Informal / Seminars / Beginner & Youth Programs / and much more!


Information: 410-465-5712 or website: [www.balpex.org](http://www.balpex.org)  
Presented by the Baltimore Philatelic Society

Photo: National Park Service

**August 7-9, 2026: BALPEX 2026 88th Annual Stamp Exhibition & Bourse. BWI Marriott Airport, 1743 West Nursery Rd., Linthicum Heights, MD 21090.**

Five minutes from the BWI terminal via free Marriott shuttle and five minutes from the BWI Amtrak/MARC station. Times: Friday & Saturday, 10AM – 6PM, Sunday, 10AM – 3PM. Free admission and Free parking. Easy in-and-out ground level venue. BALPEX is a World Series of Philately Show. For more information on BALPEX 2026, call +1 (410) 465-5712 or E-mail: [balpex@verizon.net](mailto:balpex@verizon.net)

## Recent presentations posted on the PSLC website

-  ["The Greenland Parcel Post Stamps,"](#) by Dr. Jaume Balsells (2026-04-22)
-  ["Pennsylvania State Taxation of Full Strength Beer",](#) by Ronald E. Leshner (2026-04-08)
-  ["Lutheran Charity Seal Collecting \(1910-1977\)",](#) by Stanley Jones (2026-03-25)
-  ["A Brief History & Examination of the U.S. Private Die Proprietary C.B. Woodworth & Son Imperishable Perfumes company and the scarce #RT20 Double Transfers",](#) by Dr. Charles J. DiComo, PhD (2026-03-25)

## Recent uploads to the PSLC YouTube Channel

["Lutheran Charity Seals Collecting \(1910-1977\)"](#) By Stanley E. Jones

[Century of Progress: Aerophilately of the 1933 - 1934 Chicago Exposition](#), By Jim Haxby



### Philatelic Society of Lancaster County (PA)

@philatelicsocietyoflanecast7393 • 596 subscribers • 94 videos

The Philatelic Society of Lancaster County (Pennsylvania) is an award-winning, non-profit ...more

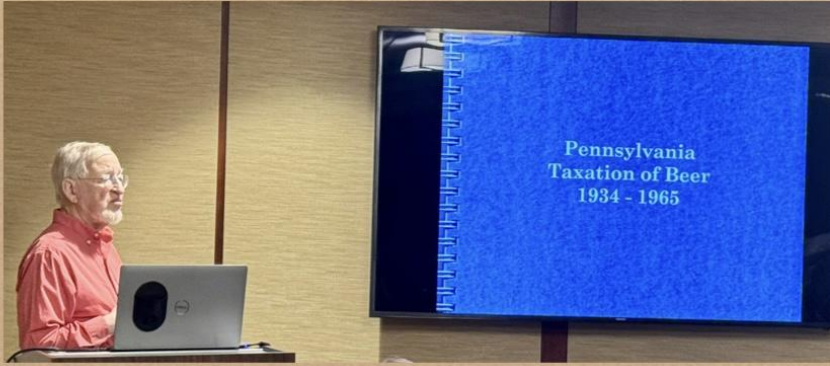
[lcpss-stamps.org](http://lcpss-stamps.org) and 2 more links

 Subscribed ▾

## Find the PSLC on YouTube and Facebook

Our Facebook page has more than 1,500 followers – please join us! YouTube and Facebook provide the PSLC with a 24/7/365 presence on the world-wide web, and both are a great place to learn from and interact with other collectors. Please check out our posts, and then follow us so that you keep up with all the latest PSLC news and information, at <https://www.facebook.com/philatelicsocietylanastercounty> and <https://www.youtube.com/@philatelicsocietyoflanecast7393/videos>

# Philatelic Society of Lancaster County (PA) Ron E. Leshar lecture on PA Taxation of Beer



Montage: Dr. C. DiComo

Landis Homes | April 8, 2026

## A Call for Volunteers

The 2026 PSLC Annual Holiday Dinner is several months away, and the chairman of the planning committee for that that event, **Len Kasper**, is looking for volunteers to help plan and stage the event. Len is looking for at least three other society members who enjoy planning events to entertain others, but no special experience is required. The only requirements are your enthusiasm and willingness to devote a few hours to planning and coordinating in the months before the dinner. We also need help set up the room on the day of the dinner, December 23. Please contact Len if you are interested in helping plan and set up the holiday dinner.

## Member Requests and Notices



**The Philatelic Relic:** I maintain a modest kiosk “The Philatelic Relic” on eBay. I am a philatelist, researcher, collector, postal & social historian, lecturer, editor, award-winning author, etc. My archive of stamps, postal history, ephemera, etc. is available to all. Reach out to me anytime at [charlesdicomo@gmail.com](mailto:charlesdicomo@gmail.com) with your wants & needs. Looking forward to hearing from you.

Link: [The Philatelic Relic | eBay Stores](#)

## PSLC Officers

<b>President</b> <a href="#">Dr. Charles J. DiComo</a> 914-450-3791 charlesdicomo@gmail.com	<b>First Vice President</b> John Hostetter 717-205-6296 Hostetterjohn8@gmail.com	<b>Second Vice President</b> Bill Greiner III 717-471-2354 sunfighter@verizon.net
<b>Secretary</b> David Weichert 717-342-3120 stampsbydave@gmail.com	<b>Treasurer</b> Lou DiFelice 717-572-3419 loudifelice@gmail.com	<b>Publicity</b> Len Kasper 717-723-1864 hotrodparts33@aol.com
<b>Membership Chair</b> Dan Martin 717-481-8547 drmartin6@comcast.net	<b>Program Manager</b> Paul Petersen 717-299-5640 pcpetersen@comcast.net	<b>Website Coordinator</b> Dr. Charles J DiComo 914-450-3791 charlesdicomo@gmail.com
<b>Newsletter Editor</b> Scott Ney 717-383-1736 stnst2@aol.com	<b>APS Rep</b> Paul Petersen 717-299-5640 pcpetersen@comcast.net	<b>ATA Rep</b> Paul Petersen 717-299-5640 pcpetersen@comcast.net

## General Information

### Visitors are Always Welcome!

PSLC dues are \$10.00 a year. For existing members who want to renew their membership for 1 or more years, and/or make a donation to support our Society activities and programs, you can use PayPal-Friends by remitting payment to President Charles J. DiComo, PhD at charlesdicomo@gmail.com and denote in Notes section the reason for payment, your name, and how many years you are paying. Venmo can also be used @charlesdicomo. For new members, please mail/email your [Membership Application](#) along with a check or money order to Treasurer, Lou DiFelice.

We meet in-person on the 2<sup>nd</sup> Wednesday of the month (Except August & December) at 6:30 p.m. in the Crossings Meeting Room, Landis Homes, 1001 East Oregon Road, Lititz, PA 17542. See our website for directions.

We meet virtually on the 4<sup>th</sup> Wednesday at 6:15 p.m. For society information and meeting links, contact Paul Petersen ([pcpetersen@comcast.net](mailto:pcpetersen@comcast.net)).

Visit us on YouTube: <https://youtube.com/@philatelicsocietyoflanecast7393>

Visit us on Facebook: <https://www.facebook.com/philatelicsocietylanastercounty>

Our mailing address: PO Box 6053, Lancaster, PA 17607



The PSLC is honored to be selected as a winner of the 2024 APS Star Route Awards for our website and newsletter. The Society website ([lcps-stamps.org](http://lcps-stamps.org)), our 24 – 7 virtual presence where philatelists all over the world can access our resources, is the winner of a Large Gold award. Our monthly [newsletter](#), which exists to inform you of upcoming Society events and give you a creative outlet to provide interesting philatelic content, is the winner of a Large Vermeil award.

## The PSLC is collecting dues for 2026

Dues remain at \$10 for yet another year. That is less than 84 cents per month. Where can you find a better deal?

Please submit your dues at your earliest convenience, to help us avoid unnecessary follow-up. If for some reason you decide not to renew your membership, which we sincerely hope would not be the case, please make us aware of that.

There are multiple ways you can submit your renewal payment:

1. You may renew **IN PERSON**: Submit a **check** (no cash) in the amount of **\$10 payable to PSLC** to Wayne Heim at the membership table when attending our monthly, in-person meeting. Meetings are held on the second Wednesday of the month at Landis Homes, 6:30 pm.
2. You may renew **BY MAIL**: **Print** and **complete** the **attached form** and **submit** it, with your **check** to Lou DiFelice, 1024 Woodridge Blvd., Lancaster, PA 17601-2251.
3. You may renew **WITH PAYPAL** (Family and Friends): Directions for paying online can be found on the **Philatelic Society of Lancaster County Web site, Page 1**. Payment, along with any changes to your renewal (address, phone, email, etc.) should be sent to [charlesdicomo@gmail.com](mailto:charlesdicomo@gmail.com).

Thank you in advance for your prompt response to this request, as we look forward to twelve more months of interesting, entertaining, mind-expanding philatelic presentations. If you have any questions, please contact membership chair Dan Martin at [drmartin6@comcast.net](mailto:drmartin6@comcast.net)

-----  
Please **print** this **2026 Dues Renewal Application**, complete, and **mail to Lou DiFelice, 1024 Woodridge Blvd, Lancaster, PA, 17601-2251** with **\$10.00, Checks only, no cash**. Be sure to sign your check. Thank you in advance.

Name: \_\_\_\_\_

Phone: \_\_\_\_\_

Email Address: \_\_\_\_\_

Please check here if you do not require a new membership card. This action will save the club time and the cost of postage.

Please check the appropriate ATA/APS box(s) if you are a paid-up member:

ATA Member       APS Member

**Make checks payable to Philatelic Society of Lancaster County.** Please advise of any changes in address, phone/cell, email, or change in ATA/APS status.