

THE CARD – Vol. 37, No. 3, Issue 420, May 2026

A Publication of the Lancaster County Postcard Club, Lancaster, PA

Enjoying postcards through education and entertainment.

Next Meeting: May 18 , 2026 Farm & Home Center, Buy, Sell & Trade from 5:30 PM, Meeting – 7:00 PM

Like us on Facebook – www.facebook.com/LCPClub.

<http://www.lcpc-stamps.org/newsletter-archive/the-card/>

APRIL MEETING

The 36th Anniversary meeting of the Lancaster County Postcard Club was held on April 20, 2026 with 26 members attending. The meeting was held following a Member's Market and was led by President Pam Tronsor.

The Secretary's and Treasurer's reports were read. The Treasurer, Barb Mowrer reported a balance of \$1359.57. She is currently collecting 2026 dues of \$15 for a single person and \$20 for a couple. She reported that a \$200 deposit has been made for the August Expo.

Pam announced that the National Postcard Week is May 3-9, 2026.

Free postcards by Lancaster Artist G. Robert Wagner were available to members.

The postcard competition of 'Mail Delivery' was held. See page 4 for the results. Bring your favorite postcard for the May competition.

Door prizes were won by Aaron Heckler and DeDe Schaeffer. The 50/50 drawing was won by Kerry Mohn.

Respectfully submitted,
Jeanne Schopf, Secretary

PRESIDENT'S MESSAGE

May flowers are in abundance as we mark National Postcard Week, May 3 - 9. Celebrated internationally, this event promotes sending and collecting postcards to create lasting connections. The friendships we've experienced within our Club are a testament to the lasting connections we've made through our shared love of postcards. For this month's meeting, members are asked to bring a favorite postcard and share why this card is important to them. I can't wait to hear from everyone who attends as we continue to build our Club and strengthen our connections.

Pam

MAY PROGRAM

Member participation night – please bring one of your favorite cards to the meeting to share. Be prepared to tell what makes it special to you.

2026 PROGRAMS

May: Member Participation – Your favorite postcard

June:

July: Picnic

August: Expo

September: Gisela Withers

October: Kerry Mohn

November: Pam Tronsor

December – Holiday Party



MEMBERSHIP DUES

It is now time to pay your dues for 2026. The rate remains the same - **Individual dues are \$15.00 or \$20.00 for two people residing at the same address.** You can pay Barabra Mowrer at the April meeting or you may send a check to:

Barabra Mowrer
4614 Marietta Avenue
Columbia, PA 17512

FUTURE SHOWS 2025

May 30: Washington Crossing Card Collectors Club Postcard Show & Sale, Union Fire Hall Ballroom, 1396 River Road, Titusville, NJ, Saturday 9-4, Adm. \$3.00

August 1: Summer Chesapeake Postcard Fair & Civil War Photography Show, 100 Lagaret Lane, Havre De Grace, MD 21078. Adm. \$3.00

November 20-21: York International Photo & Postcard Expo, York Fairgrounds 334 Carlisle Avenue, York, PA
Fri 9 am – 6 pm, Sat. 9 am – 4 York, 17404 Cost - \$5.00

Small Town Banks in Lancaster County

By Brian Frankhouser

During the 19th century, it was unusual for any small towns to have their own bank. The biggest challenge to starting a new bank was selling enough stock to meet the capitalization requirements. That changed in 1900 when the Gold Standard Act was passed. Although, not the driving force of the law, there was a provision in the Act that relaxed the minimum required capital for national banks in rural areas. If the population of the town was less than 3,000, then they would no longer need \$50,000 capital. The new standard was \$25,000. This revision emboldened many small towns who realized that opening a new bank was achievable. In Lancaster County, at least a dozen new banks were started between 1901 and 1910. Following are some examples:

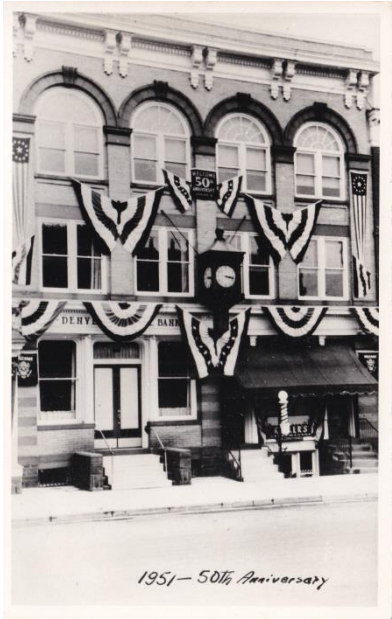


Photo #1:
Denver National Bank opened in 1901. Shown is a real photo postcard published in 1951 for their 50th anniversary.



Farmers National Bank and Post Office, Lititz Pa.

Photo #2:
The Farmers National Bank of Lititz opened in 1901. Shown is a black and white lithographed postcard published by the Express Printing Co. and postmarked 1909.



Photo #3:
Blue Ball National Bank opened in 1906. Shown is a real photo postcard distributed about 1907.



Photo #4:
The Farmers National Bank of New Holland opened in 1907. Shown is a real photo postcard of the new bank building, shortly after it was completed in 1908.



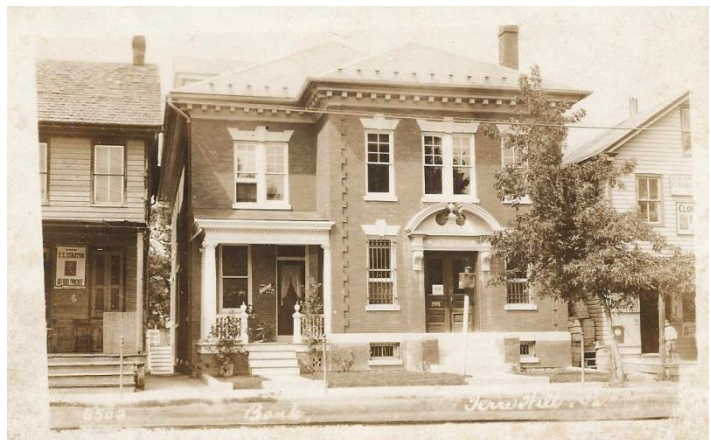
Photo #5:
The First National Bank of Intercourse opened in 1908. Shown is a real photo postcard published about 1910.

Photo #6:
The Brownstown National Bank opened in 1908. Shown is a real photo postcard that was part a large set published in 1915.

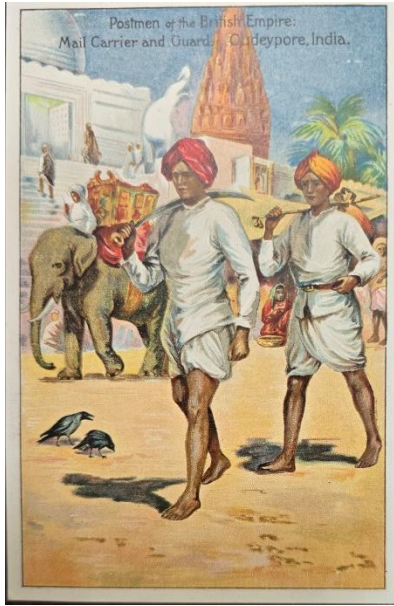


Photo #7:
The First National Bank of Landisville opened in 1908. Shown is a lithographed postcard published by D. B. Landis, Pluck Art Printery, Lancaster, Pa. in 1910.

Photo #8:
Terre Hill National Bank opened in 1909. Shown is a real photo postcard published by Ed Herbener of Newark, DE. In 1914.



APRIL POSTCARD COMPETITION "Mail Delivery "



First: Gisela Withers
'Mail Delivery in India'



Second: Pam Tronsor
'Guoss Ami Berlin'



Second: Anthony Iezzi
'Centerville PA Post Office'

Honorable mentions:
Donna Bashaw - 'Hell, MI'
Annetta Buettner - 'Aerial view of NY'
Renate Sachse - 'Bellefonte, PA'.



2026 POSTCARD COMPETITION SUBJECTS

- May:** Famous People
- June:** Wonderful World of Animals
- July:** Men/Women at Play
- August:** Expo
- September:** Sports
- October:** General Stores
- November:** Musicians at Work