

THE CARD – Vol. 37, No. 2, Issue 419, April 2026

A Publication of the Lancaster County Postcard Club, Lancaster, PA

Enjoying postcards through education and entertainment.

Next Meeting: April 20, 2026 Farm & Home Center, Buy, Sell & Trade from 5:30 PM, Meeting – 7:00 PM

Like us on Facebook – www.facebook.com/LCPClub.

<http://www.lcpc-stamps.org/newsletter-archive/the-card/>

MARCH MEETING

CANCELED due to the weather.

MEMBERSHIP DUES

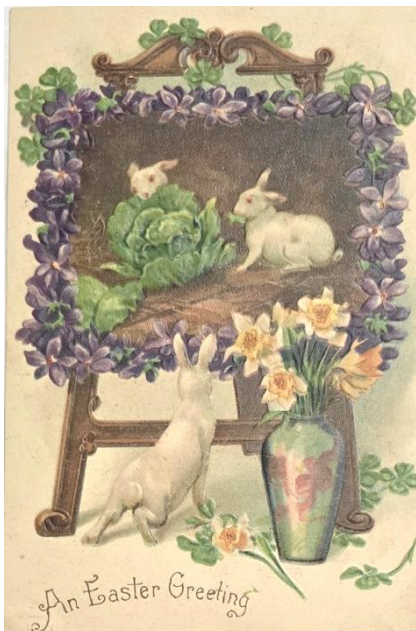
It is now time to pay your dues for 2026. The rate remains the same - **Individual dues are \$15.00 or \$20.00 for two people residing at the same address.** You can pay Barabra Mowrer at the April meeting or you may send a check to:

Barabra Mowrer
4614 Marietta Avenue
Columbia, PA 17512

PRESIDENT'S MESSAGE

Some of us reconnected at the Morlatton Post Card Club Show, but it will be so good to see everyone again at our April meeting! I hope you all stayed safe during the extreme weather when we had to cancel our March meeting. So, come out this month to meet and eat cake and celebrate our club's 36th birthday. And bring your cards for our Members Market and our regular monthly postcard competition. Like Rainer Maria Rilke, we will celebrate the renewal of spring as, once again, "the lark lifts on up soaring wings".

Pam



APRIL PROGRAM

Join us for the Member's Market, any member of the club may set up and sell postcards, books, local historical items, and paper ephemera. There will be a brief business meeting, the monthly card competition and a birthday celebration.

2026 PROGRAMS

January: NO MEETING

February: NO MEETING

March: Canceled

April: Members Market

May:

June:

July: Picnic

August: Expo

September: Gisela Withers

October:

November: Pam Tronsor

December – Holiday Party



2026 POSTCARD COMPETITION SUBJECTS

April: Mail Delivery

May: Famous People

June: Wonderful World of Animals

July: Men/Women at Play

August: Expo

September: Sports

October: General Stores

November: Musicians at Work



FUTURE SHOWS 2025

April 25-26 : Allentown Spring Paper Show, Agricultural Hall, 1929 Chew St. Allentown Fairgrounds, PA, Sat. 9-5, Sun 9-3, Admission \$10 (with ad \$9.00)

August 1: Summer Chesapeake Postcard Fair & Civil War Photography Show, 100 Lagaret Lane, Havre De Grace, MD 21078. Adm. - \$3

November 20-21: York International Photo & Postcard Expo, York Fairgrounds 334 Carlisle Avenue, York, PA Fri 9 am – 6 pm, Sat. 9 am – 4 York, 17404 Cost - \$5

Friendship Check Book

By Brian Frankhouser

Ralph William Smiley was a man who liked to keep in touch with old friends. After graduating from Harvard, he was very interested in keeping up to date with his old college roommates. To make it easier for them, and to provide a gentle reminder to write, he sent each of them a calendar with pre-addressed postcards that could be detached. It was a total success! That was the beginning of "RYTE-ME" calendars. He introduced them on a much larger scale and sold thousands. By 1914, there were at least four categories of calendars that included 12 monthly detachable postcards: (1) Regular RYTE-ME containing 12 merry jingles; (2) Mothers RYTE-ME included 12 letters from Mom; (3) Everyman's RYTE-ME had 12 mottoes; and (4) Votes for Women RYTE-ME included 12 reasons for women's rights.

On April 6, 1917, the United States entered World War 1, and the country embraced patriotism and supporting the troops. By the end of the year, Smiley introduced the very popular Boy Scouts of America RYTE-ME calendar, and felt there was an additional market for the boys going overseas to join the fight. Considering the doughboys may require something more compact than a calendar, Ralph introduced the "Friendship Check Book". It was full of slogans and mottoes with themes related to friendship and patriotism. The check book was published by the Ralph W. Smiley Company, 74 India Street, Boston, Mass., and could be purchased for 25 cents. It was printed by Everett Press in Boston. There was a second printing, but all the illustrations accompanying this article are from the first edition.



Photo #1:

The front cover of the Friendship Check Book has a patriotic theme and is a slightly larger size than a regular side-tab bank checkbook. The narrative inside the front cover includes "Copyright 1917 by Ralph William Smiley".

Photo #2:

Each of the 12 pages in the "check book" includes a side tab and a standard sized postcard that can be detached along a perforated edge. What's left after the postcard is used is a record of when, who, and what was written.



Photo #3:

Smiley put a slight spin on an Elbert Hubbard quote (without referencing him) on this postcard. Many of Hubbard's mottoes and sayings have been published on postcards, especially during the "golden age".



Photo #4:
Benjamin Franklin was a man ahead of his time, and this saying is a great example of his practical wisdom. This quote is often seen following "in times of stress..."

Photo #5:
A symbol of the unity between the allied forces during World War 1 included "hands across the sea". The quote on this postcard was attributed to Pulitzer Prize winning author, Laura E. Richards, who wrote more than 90 books.

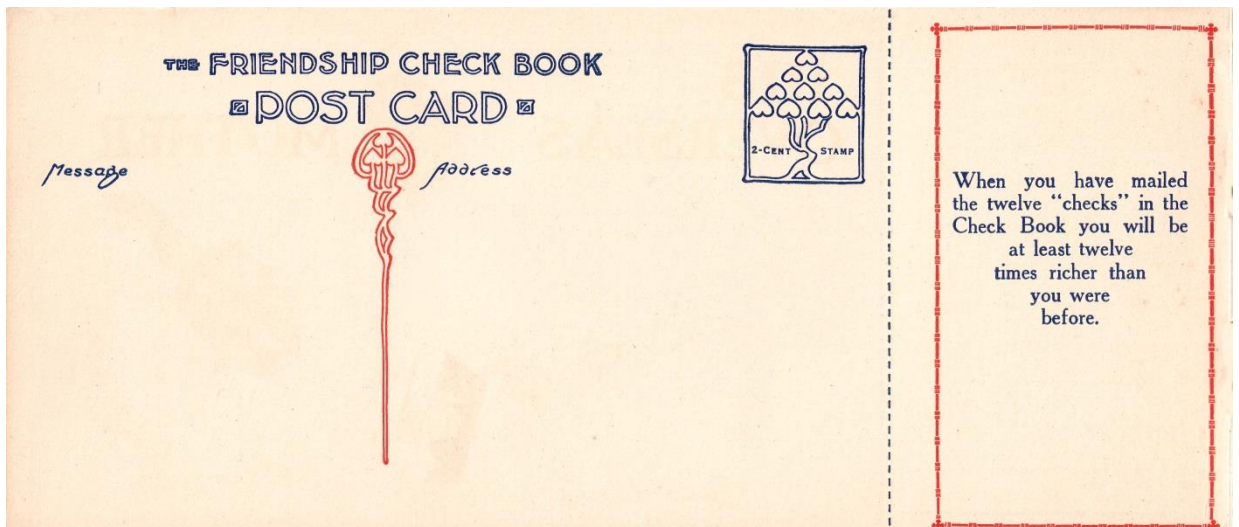
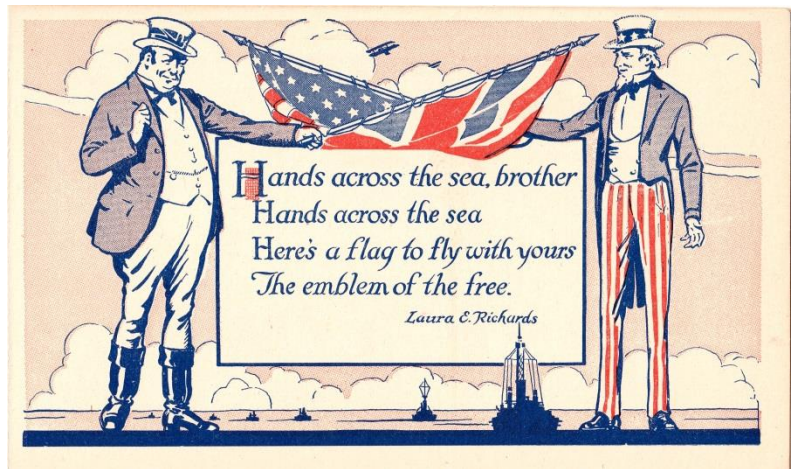


Photo #6:
Reverse of a page in the Check Book. Postage for postcards did not increase to 2 cents (as shown in stamp box) until November 2, 1917. Each check stub back has a different "friendship quote", including "No danger in overdrawing your account in the Bank of Friendship."