

**Pennsylvania
Taxation of Beer
1934 - 1965**

Beverage Tax Overprint in Red William Gretz Brewing



Beverage Tax Overprint in Red William Gretz Brewing



Beverage Tax Overprint in Black Penn Star Brewery



Beverage Tax Overprint in Black Haefner Brewing Co.



Beverage Tax Overprint in Black Haefner Brewing Co.



Beverage Tax Overprint in Black J Hornung



Beverage Tax Camden County Beverage Co.



Malt Liquor Tax Wacker Brewing Co.



MALT LIQUOR TAX STAMP

HALF BARREL

PENNSYLVANIA

DEPARTMENT OF REVENUE
COMMONWEALTH OF PENNSYLVANIA

HALF BARREL

MALT LIQUOR TAX STAMP

PENNSYLVANIA

HALF BARREL

MALT LIQUOR TAX STAMP

UNPAID STAMPS
INTERNAL REVENUE

STAMP FOR

HALF BARREL

MALT LIQUOR

SERIES OF 1934

00000946462

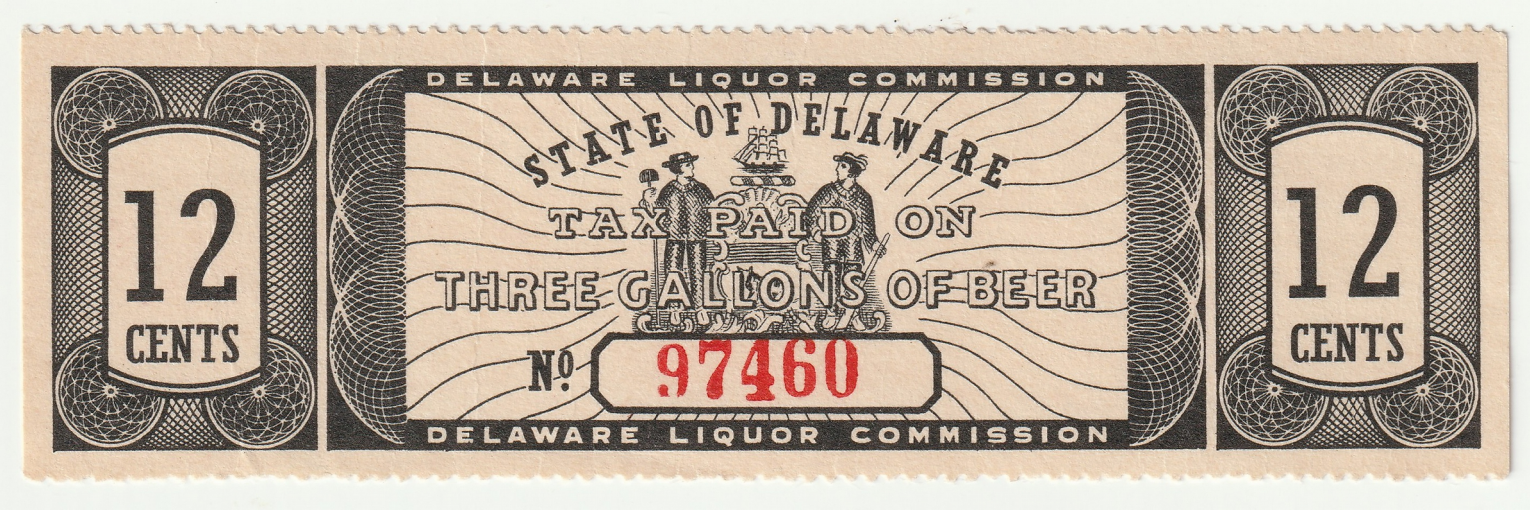
H



A Reciprocal Tax



Delaware Reciprocal Tax



Reduction in size



Bottle Tax Crown



Yuengling Tax Crown



Reuse of Tax Crowns Therefor Keystone on Bottle Labels



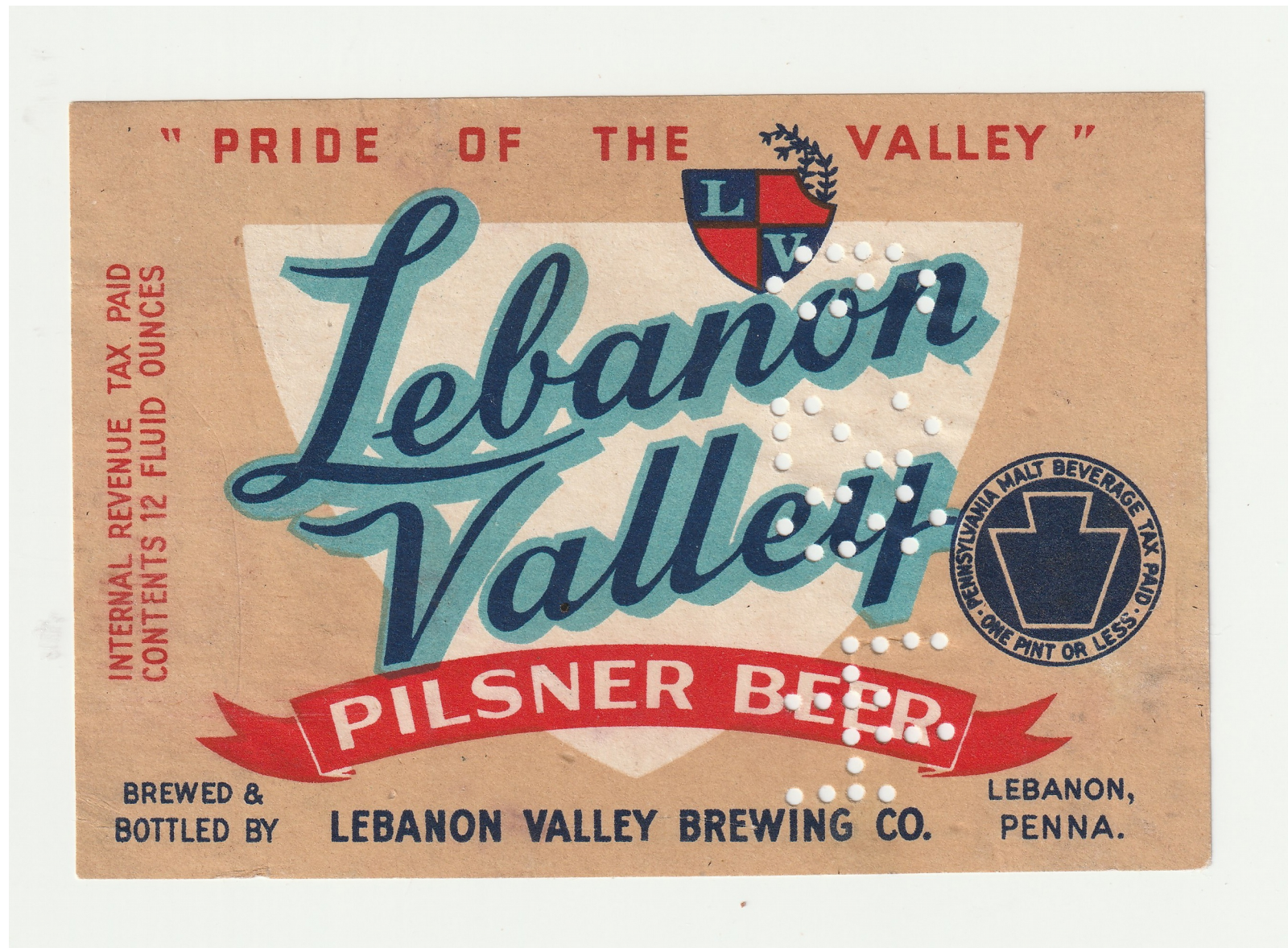
Reuse of Tax Crowns Therefor Keystone on Bottle Labels



Reuse of Tax Crowns Therefor Keystone on Bottle Labels



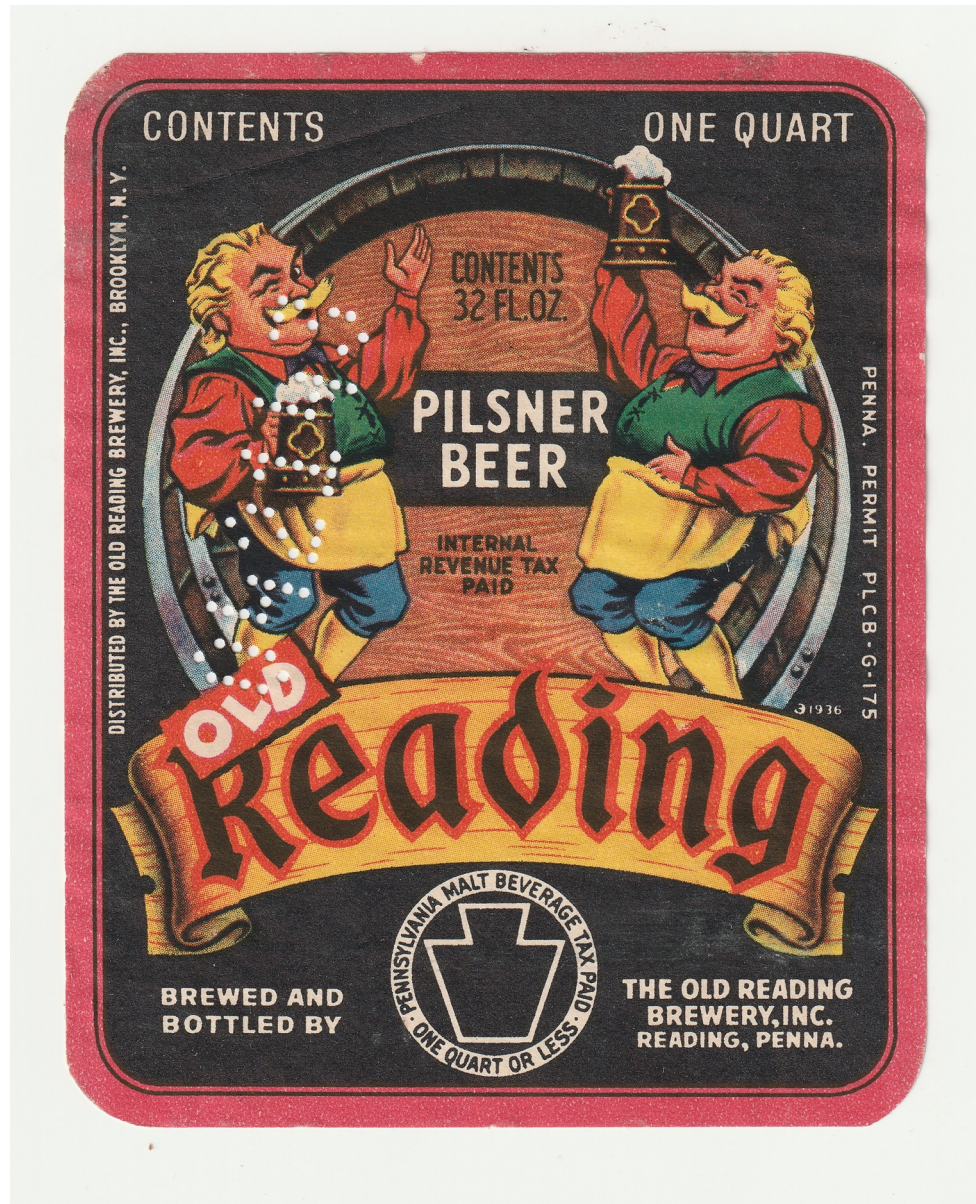
Reuse of Tax Crowns Therefor Keystone on Bottle Labels



Reuse of Tax Crowns Therefor Keystone on Bottle Labels



Reuse of Tax Crowns Therefore Keystone on Bottle Labels



Reuse of Tax Crowns Therefor Keystone on Bottle Labels



End of the Federal Beer Stamps

