

*“Serving Lebanon and Berks Counties”*

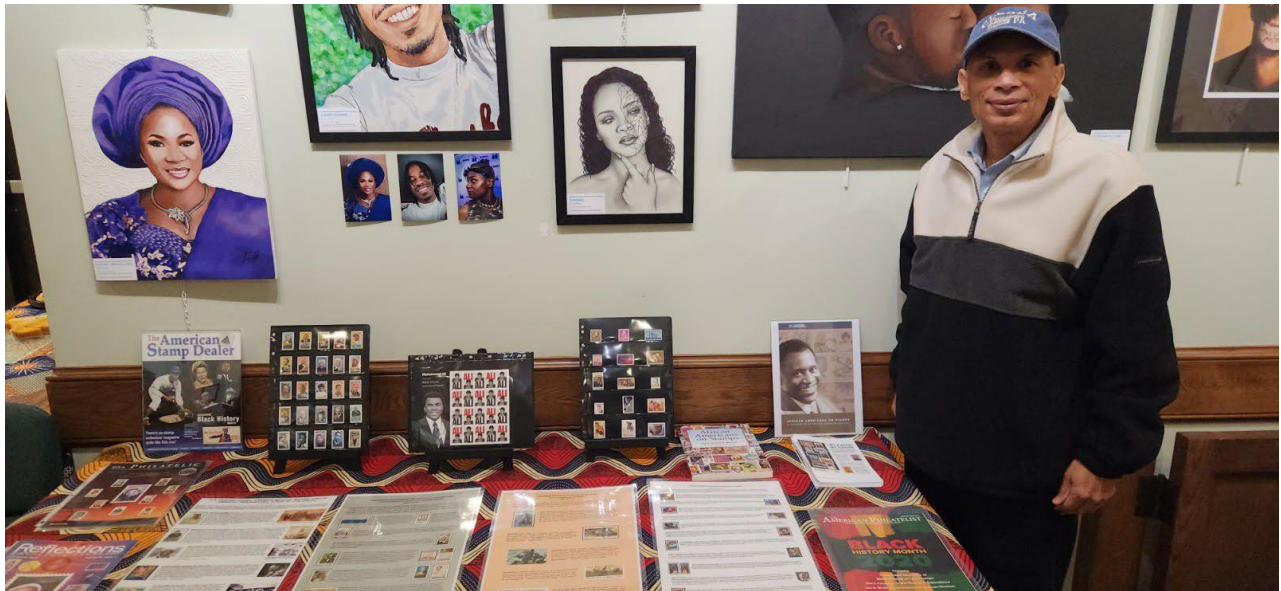
# **THE PATENT - OVERPRINT**

The combined monthly newsletter of the Lebanon and Reading Stamp Collectors Clubs

**February 2026  
Number 77**

The February meeting of the Lebanon Stamp Collectors Club will be held on Tuesday, February 17, 2026, at 6:30 p.m. at the Lebanon Community Library at 125 M 7<sup>th</sup> Street in historic downtown Lebanon (17046). Doug Lotz will be bringing along stamp albums that he inherited from his father and grandfather to discuss with us and learn more about; considering the vast knowledge possessed by our club members, I think we’ll all learn something new on February 17.

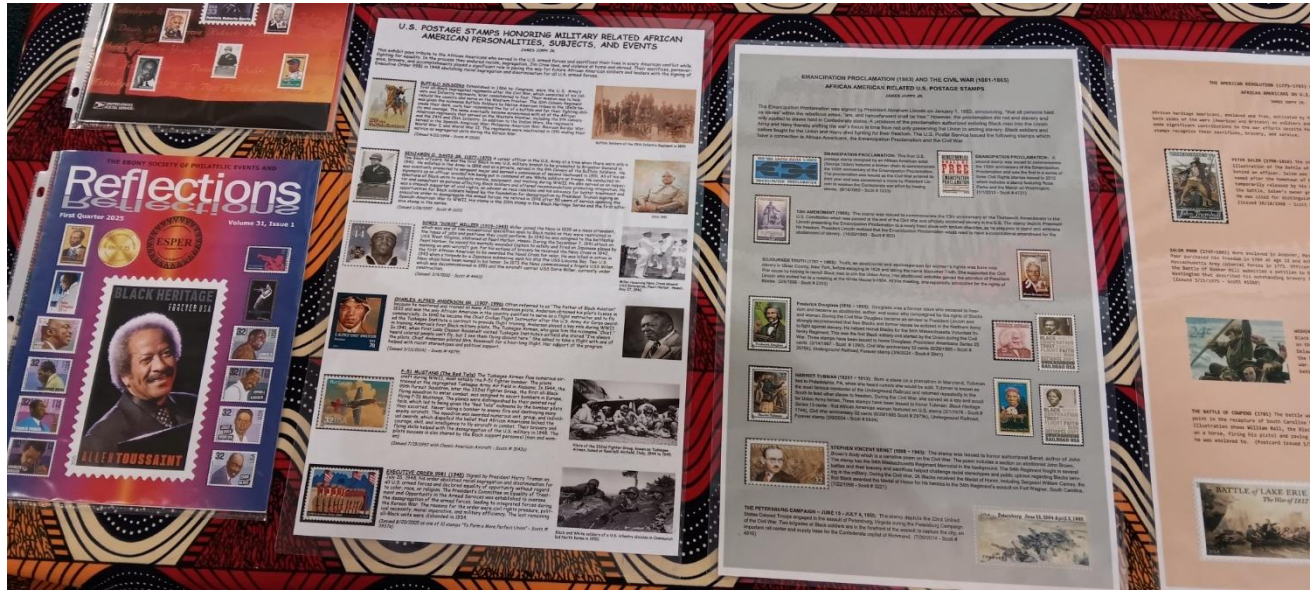
## **Celebrating Black History Month in Lebanon with the LSCC**



This month’s First Friday exhibit at the Lebanon Valley Council on the arts featured an exhibition from several Black artists, a local musician, and stamps from our own Jim Joppy’s Black Heritage collection.

Jim’s exhibition included stamps from the long-running Black Heritage series, ongoing since 1978, and stamps featuring African Americans since the very first issue featuring Booker T. Washington in the Famous Americans Series, issued on April 7, 1940.

For the past few years, Jim has created a one-page exhibit to submit for the American Topical Association’s “[My One-Page Exhibit](#)” program which features exhibits from countries around the world. This year he’s created an exhibit honoring African American personalities on stamps who have served in the military. The ATA has taken the year off from the program due to preparations for the big stamp exposition in Boston, but Jim hasn’t.



This was the fourth year for the Lebanon Valley Council on the Arts First Friday Black History Month exhibition, which is sponsored by the LVCA and the Lebanon County Branch of the NAACP.

Further reading:

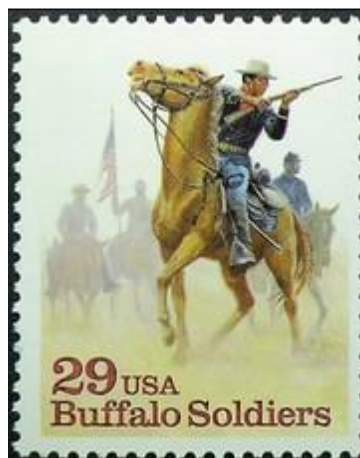
[LVCA First Friday celebrates Black History Month with art exhibit, music - LebTown](#)



## U.S. Postage Stamps Honoring Military Related African American Personalities, Subjects, and Events

*By James Joppy Jr.*

This exhibit pays tribute to the African Americans who served in the U.S. armed forces and sacrificed their lives in every American conflict while fighting for equality. In the process they endured racism, segregation, Jim Crow Laws, and violence at home and abroad. Their sacrifices, perseverance, bravery, and accomplishments played a significant role in paving the way for future African American soldiers and leaders with the signing of Executive Order 9981 in 1948 abolishing racial segregation and discrimination for all U.S. armed forces.



**Buffalo Soldiers** – Established in 1866 by Congress, were the U.S. Army's first all-Black segregated regiments after the Civil War, which consisted of six Cavalry and Infantry regiments, later consolidated to four. Their mission was to help rebuild the country and serve on the Western frontier. The 10<sup>th</sup> Cavalry regiment was given the nickname Buffalo Soldiers by Native American tribes in the 1860s because their dark, curly hair resembled the fur of a buffalo and for their fighting ability and courage. The name eventually became synonymous with all of the African American regiments that served on the Western frontier, including the 9<sup>th</sup> Cavalry and the 24<sup>th</sup> and 25<sup>th</sup> Infantry. In addition to the Indian Wars, the regiments served in the Spanish – American War; Philippine – American War; Mexican Border War; World War I; and World War II. The regiments were inactivated in 1951 ending their service as segregated units during the Korean War. (Scott #2818 – Issued 4/22/1994)



*Buffalo Soldiers of the 25<sup>th</sup> Infantry Regiment in 1890*



**Benjamin O. Davis Sr. (1877 – 1970)** – A career officer in the U.S. Army at a time when there were only a few Black officers, he was the first Black in any U.S. military branch to be promoted to Brigadier General in 1940. He enlisted in the Army in 1898 and as a private, served in the 9<sup>th</sup> Cavalry of the Buffalo Soldiers. He was eventually promoted to sergeant major and earned a commission of second lieutenant in 1901. All of his assignments as an officer avoided him being

put in command of any White soldiers or troops. He conducted inspections of Black units to evaluate morale, equipment, and training during WWII. He also served as an inspector and consultant on policies affecting Black soldiers and offered recommendations promoting integration. He was a staunch supporter of civil rights, an advisor on race relations and his advocacy for better treatment and opportunities for Black soldiers helped lay the foundation for desegregation by President Truman signing an executive order to desegregate the armed forces. He retired in 1948 after 50 years of service spanning the Spanish – American War to WWII. His stamp is the 20<sup>th</sup> stamp in the Black Heritage Series and the first adhesive stamp in the series. (Scott #3121 – Issued 1/28/1997)



Brigadier General Benjamin O. Davis, Sr. ca. 1945



**Doris “Dorie” Miller (1919 – 1943)** – Miller joined the Navy in 1939 as a mess attendant, which was one of the few occupational specialties open to Black males as they were restricted in the types of jobs and positions they could perform. In 1940 he was assigned to the battleship USS West Virginia, stationed at Pearl Harbor, Hawaii. During the December 7, 1941 attack on Pearl Harbor, he moved his mortally wounded Captain to safety and fired on Japanese planes by manning an anti-aircraft gun. For his actions of bravery he received the Navy Cross in 1942, the first African American to be awarded the Naval Cross for valor. He was killed in action in 1943 when a torpedo by a Japanese submarine sank his ship the USS Liscombe Bay. Two U.S. Navy ships have been named in his honor. In 1973 the Navy commissioned a frigate USS Miller, which was decommissioned in 1991 and the aircraft carrier USS Dorie Miller, currently under construction. (Scott #4443 – Issued 2/4/2010)



Miller receiving the Navy Cross aboard USS Enterprise, Pearl Harbor, Hawaii, May 27, 1942.



**Charles Alfred Anderson, Sr. (1907 – 1996)** – Often referred to as “The Father of Black Aviation” because he mentored and trained so many African American pilots, Anderson obtained his pilot’s license in 1932 and was the only African American in the country qualified to serve as a flight instructor and to fly commercially. In 1940 he became the Chief Civilian Flight Instructor after the U.S. Army Air Corps awarded the Tuskegee Institute a contract to provide flight training. Anderson played a key role during WWII in training America’s first Black military pilots, the Tuskegee Airmen, who gave him the nickname “Chief”. In 1941, when First Lady Eleanor Roosevelt visited Tuskegee Institute’s airfield she stated, “I’ve always heard colored people can’t fly, but I see them flying around here.” She asked to take a flight with one of the pilots. Chief Anderson piloted Mrs. Roosevelt for an hour-long flight. Her support of the program helped with racist stereotypes and political support. (Scott #4879 – Issued 3/13/14)



Charles Alfred “Chief” Anderson



**P-51 Mustang (The Red Tails)** – The Tuskegee Airmen flew numerous aircraft during WWII, most notably the P-51 fighter bomber. The pilots trained at the segregated Tuskegee Army Air Field in Alabama. In 1944, the 99<sup>th</sup> Pursuit Squadron, later the 332<sup>nd</sup> Fighter Group, the first all-Black flying squadron to enter combat, was assigned to escort bombers in Europe, flying P-51 Mustangs. The planes were distinguished by their painted red tails, which led to being given the “Red Tails” nickname by the bomber pilots they escorted. Never losing a bomber to enemy fire and destroying many enemy aircraft. The squadron was awarded numerous unit, group, and individual awards, which dispelled the belief that African Americans lacked the courage, skill, and intelligence to fly aircraft in combat. Their bravery and flying skills helped with the desegregation of the U.S. military in 1948. The pilots’ success is also shared by their Black support personnel (men and women). (Scott #3142a – Issued 7/19/1997)



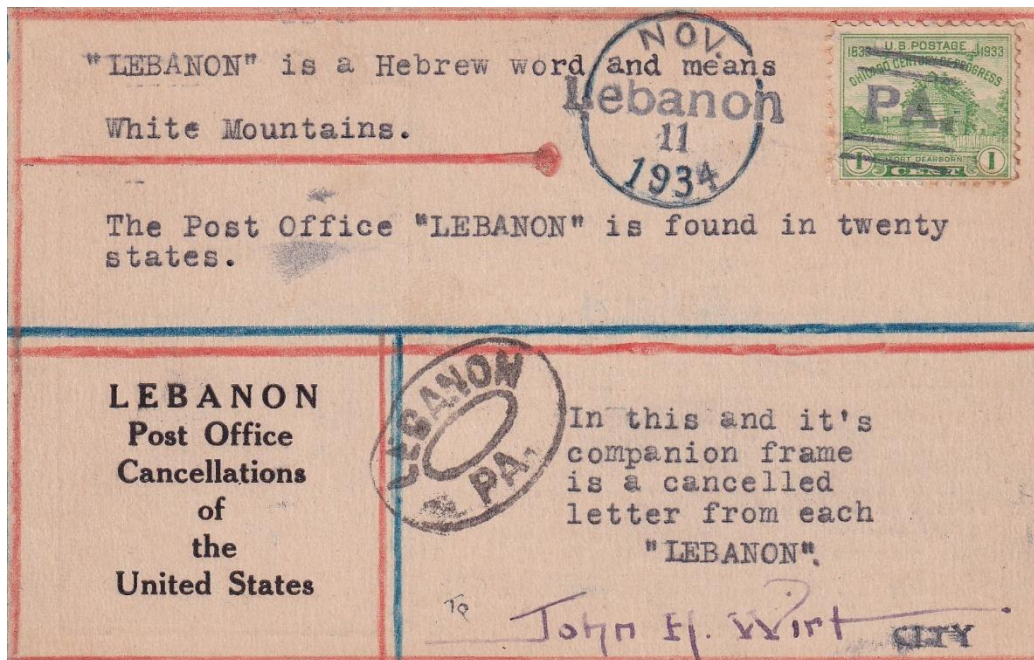
Pilots of the 332<sup>nd</sup> Fighter Group, known as the Tuskegee Airmen, based at Ramitelli Airfield, Italy, 1944 to 1945



**Executive Order 9981 (1948)** – Signed by President Harry Truman on July 26, 1948, his order abolished racial segregation and discrimination for all U.S. armed forces and declared equality of opportunity without regard to color, race, or religion. The President’s Committee on Equality of Treatment and Opportunity in the Armed Services was established to oversee the desegregation of the armed forces, leading to integrated forces during the Korean War. The reasons for the order were civil rights pressure, political necessity, moral imperative, and military efficiency. The last remaining all-Black units were disbanded in 1954. (Scott #3937a – Issued 8/20/2005 as one of 10 stamps “To Form a More Perfect Union”)



Black and White soldiers of a U.S. infantry division in Communist-led North Korea in 1950.



## Lebanon, U.S.A.

*By Scott Ney, editor*

Presented here is an interesting collection of “philatelic covers”, each one posted from a different “Lebanon” Post Office in the United States. LSCC president Dick Colberg brought them to the January LSCC meeting. Besides their obvious topical relationship with each other, I recognized the provenance behind them based on some prior newspaper research I had done.

These covers were created by a fellow named John H. Wirt, and they passed through the collection of former LSCC president Erwin Hershkowitz. Dick offered them at the winter auction of the Philatelic Society of Lancaster County, which I didn’t attend due to the weather, and since they didn’t sell there, I was able to purchase them at our meeting. I will take some time and utilize the unlimited possibilities of our electronic newsletter to share them with all of you; I think you’ll appreciate seeing the covers and knowing a fact or two about the fellow philatelist who created them.

### Lebanon Post Office Cancellations of the United States

These covers, posted at the end of October and into November in 1934, form a collection of “Lebanon Post Office Cancellations of the United States”. Present are covers representing the Biblical town name of *Lebanon* in 15 states. According to the collector, Mr. Wirt, there were 20 Post Offices named Lebanon in the United States in 1934 (I assume that this is not counting “New Lebanon” or other variants). Therefore, this is not a complete representation; for example, there are no covers from Lebanon, New Jersey or Lebanon, Tennessee, the home of the Cracker Barrel restaurant chain.

But this is a thorough representation of those places which had a Post Office at the time this small collection was assembled, and at one time, I believe it was “complete”, and part of a two-frame exhibit that Mr. Wirt may have presented at an early LSCC stamp exhibition (cf. “Lebanon Collectors Exhibit

Stamps at Legion Home”, *Lebanon Daily News*, November 15, 1934, which was reprinted in the *Patent - Overprint* in February, 2025).

The illustration at the top of this piece is on a card, that went through the mail, that was found in some miscellaneous covers that had been in the collection of late LSCC member Glenn Blauch. Since that introductory card was found in a different place, I believe that the missing covers were separated from these at some point, and rather than lament their loss, I feel fortunate to have found a key piece of this collection that was preserved, probably as an afterthought, in Glenn’s terrific Lebanon County Postal History collection.



### Lebanon, Pennsylvania

Population (1930): 25,561

Population (2020): 26,814

There are two covers from our hometown of Lebanon, Pennsylvania. The first, with a block of 1 cent Washington-Franklins, was postmarked on October 30, 1934, and signed by Lebanon’s mayor and postmaster. There’s a Lebanon, PA receiving mark dated October 31 on the back of the cover.



The other Lebanon, PA cover is postmarked October 31, and has a Lebanon, PA special delivery cancel with the same date and time of day, 11:30 a.m., on the reverse (see Oklahoma and South Dakota below for an illustration of the “Special Delivery” cancel).



### Lebanon, Connecticut

Population (1930): 1,436

Population (2020): 7,142

This cover is dated October 29, and has a Lebanon, PA receiving mark on the back dated October 31. Lebanon in Connecticut was incorporated in 1700, and was the hometown of William Williams, a signer of the Declaration of Independence. There's a relatively robust historical summary of the town on [Wikipedia](#). The Lebanon (Connecticut) School District's mascot is the Bulldog (not the Cedars!).



### Lebanon, Georgia

Population (1930): ?

Population (2020): ?

I was not able to find current information about population, because Lebanon, Georgia has been absorbed into a town called Holly Springs. Holly Springs is located 36 miles south of Atlanta and is considered to be an Atlanta suburb. You might think that the name would have disappeared completely, but you would be wrong; [Lebanon](#) still has a post office, Zip code 30146, which is located in a strip mall.

This cover was postmarked in Lebanon, GA on November 12, but curiously, has a Lebanon, PA receiving stamp on the back dated November 5.



**Lebanon, Illinois**

Population (1930): 1,828

Population (2020): 4,691

This cover was postmarked on October 30 in Illinois, and has an October 31 Lebanon, PA receiving stamp on the back. Lebanon High School in Illinois are the Greyhounds (not the Cedars!)



#### Lebanon, Indiana

Population (1930): 6,445

Population (2020): 16,662

This cover is dated as sent on October 30 in Indiana and received on October 31 in Pennsylvania. Lebanon, Indiana, is located in Boone County, which as you probably guessed, is named after frontiersman and Pennsylvania native Daniel Boone, and Lebanon Senior High School are the Tigers (not the Cedars!)



#### Lebanon, Kansas

Population (1930): 723

Population (2020): 178

This cover is marked posted on October 31 in Kansas and was marked received on November 2 in Pennsylvania. It was founded in 1876 and named after Lebanon, Kentucky. It is called a city despite its very low population and no longer has its own schools (when it did, they were the Broncos, not the Cedars!) Despite its size, or perhaps in part because of it, Lebanon KS held a place in our pop culture as a setting in a long-running CW Network TV show called *Supernatural* (2005 – 2020).

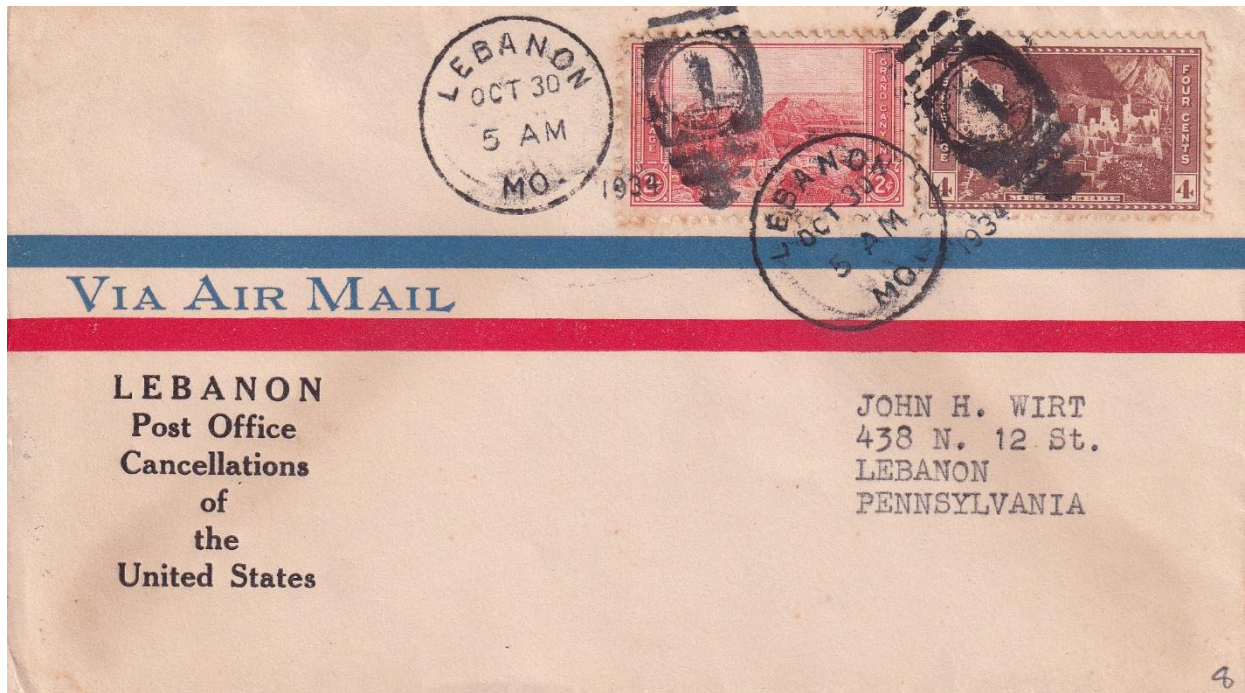


**Lebanon, Kentucky**

Population (1930): 3,248

Population (2020): 6,274

This cover was postmarked on October 30 in Lebanon, KY, and marked received in Louisville, KY on October 30 and November 2 in Lebanon, PA. Lebanon in Kentucky was established in 1814 (the year after Lebanon County was established in Pennsylvania). They have a public library, which is called . . . the Marion County Public Library.

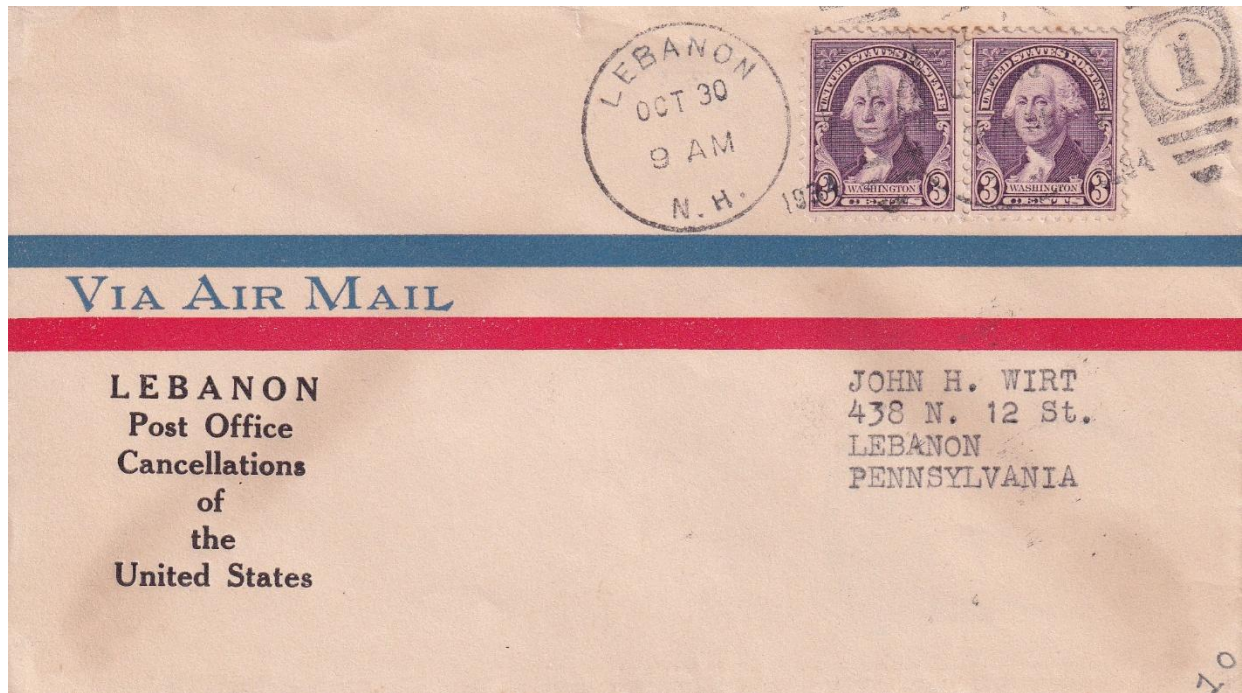


**Lebanon, Missouri**

Population (1930): 3,562

Population (2020): 15,013

This cover is postmarked early on October 30 in Missouri and November 2 in Pennsylvania. This Lebanon is named after Lebanon, Tennessee. They have a high school (the Yellowjackets, not the Cedars!) and a public library, the Lebanon – Laclede County Library.



### Lebanon, New Hampshire

Population (1930): 7,073

Population (2020): 14,282

Posted on October 30 in New Hampshire, and received in Lebanon, PA on October 31. Lebanon in New Hampshire is an old town, incorporated in 1761, and like the township in Lebanon, PA, there is a place called West Lebanon. They have their own elementary, middle, and high schools (the Raider Bird or Falcon Hawk (aka the Fawk), not the Cedars!)



**Lebanon, New York**

Population (1930): 895

Population (2020): 1,326

This cover is postmarked the morning of October 31 in New York and received on the morning of November 2 in Pennsylvania. A tributary of the Susquehanna River flows by on the eastern side of town, and should you need to contact the town dog control officer, you can reach her via cell phone at the number posted on the [town website](#).



### Lebanon, Ohio

Population (1930): 3,222

Population (2020): 20,841

There are multiple October 30 date stamps from Ohio, and one October 31 date stamp from Pennsylvania on this cover. While making the trip west to Cincinnati, you'll pass Lebanon, and Lancaster and Harrisburg too, before you reach your destination. Lebanon City has their own schools (the Warriors, not the Cedars!), and the Lebanon Public Library. The town was named after their Juniper, or Eastern Red Cedar trees, and is known as "The Cedar City", so I think that they really should consider changing their high school mascot; [Rooty](#) ought to pay them a visit sometime.

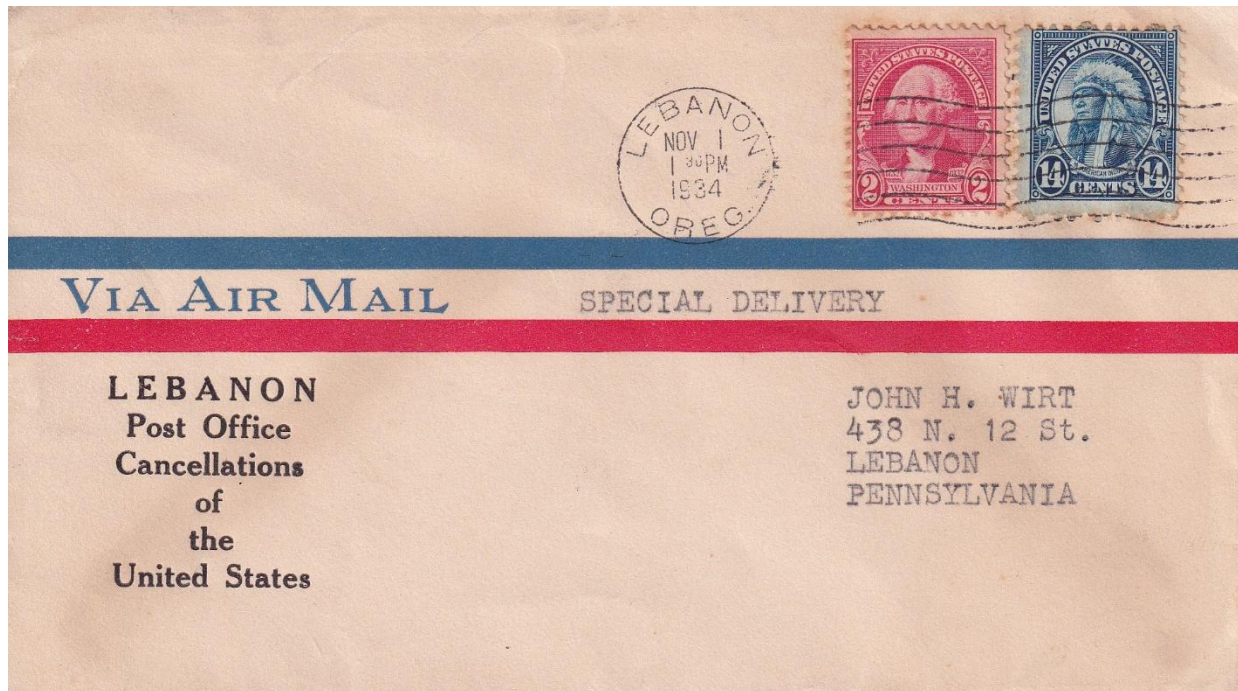


**Lebanon, Oklahoma**

Population (1930): ?

Population (2020): 210

This cover was posted in Lebanon, Oklahoma, on October 31, and has a series of stamps on the rear: a partially legible "Air Mail Field" stamp from Texas dated November 1, a Broad Street Terminal RPO from Philadelphia on November 2, and a Lebanon, PA special delivery stamp dated November 3. Lebanon is quite small, unincorporated, but nonetheless still has an operating Post Office, ZIP code 73440.



### Lebanon, Oregon

Population (1930): 1,851

Population (2020): 19,690

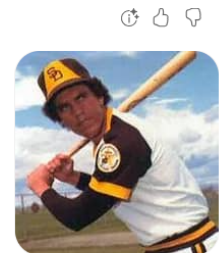
This cover is dated November 1 in Oregon and received in Pennsylvania on November 3. Lebanon High School in Oregon has similar colors to our LHS (crimson red and royal blue), and the same mascot as Lebanon, Ohio (the Warriors, not the Cedars!), which proves that one of these other Lebanon School Districts could be the Cedars if they really wanted to. Dave Roberts, the #1 overall pick in the 1972 Major League Baseball draft, went to high school in Lebanon. His baseball career wasn't quite as successful as the basketball career of Lebanon PA's famous #2 NBA draft pick, Sam Bowie. He's also not the same Dave Roberts who currently manages the Los Angeles Dodgers; that Dave Roberts was born in Okinawa on May 31, 1972, six days before Dave Roberts from Lebanon was the MLB's #1 Draft Pick. This fact confounds Microsoft Copilot's current Artificial Intelligence capabilities.

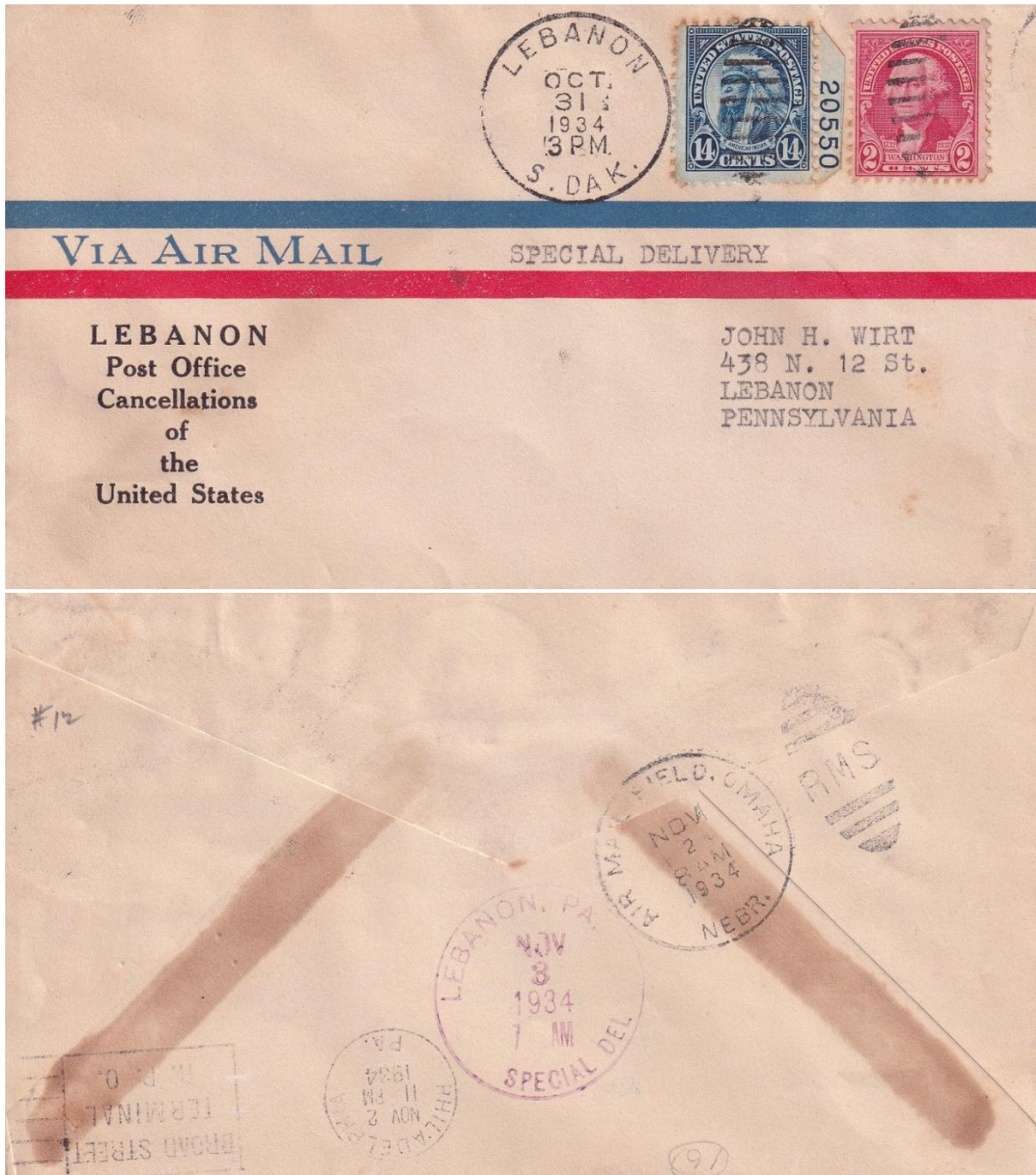
Copilot Search

**Dave Roberts is a former player for the San Diego Padres and currently serves as the manager of the Los Angeles Dodgers, with a notable rivalry against the Padres.**

#### Playing Career with the Padres

- **Background:** Dave Roberts was drafted by the San Diego Padres as the first overall pick in the 1972 MLB Draft. He played as a third baseman and catcher for the Padres from 1972 to 1982. During his time with the team, he became known for his versatility and defensive skills. [1](#)
- **Performance:** Throughout his ten seasons in Major League Baseball, Roberts had a batting average of .244 with five home runs and 33 RBIs in his rookie season. He faced challenges in his early career but eventually established himself as a reliable player. [1](#)





**Lebanon, South Dakota**

Population (1930): 334

Population (2020): 33

This cover was posted on October 31 in South Dakota and has a series of marks on the rear: Air Mail field in Omaha, NE on November 2, Broad Street Terminal RPO in Philadelphia on November 2, and Lebanon, PA special delivery on November 3. The Wikipedia page for Lebanon, SD, like a few of the others I've consulted for this lighthearted place study, could use some work; but with just 33 inhabitants, it's good that one exists. Lebanon is in Potter County, whose county seat is Gettysburg, so named after the great battle in 1863 and ironically nicknamed *Gettysburg: where the battle wasn't*.



### Lebanon, Wisconsin

Population (1930): ?

Population (2020): ?

Finally, alphabetically speaking, we have a cover sent from the Post Office in Lebanon, Wisconsin. It is dated November 10, 1934, and was received in Lebanon, PA, on November 13. The first settlers of Lebanon in Wisconsin were Lutheran immigrants from Prussia in the German empire who migrated there in 1843. They had a lot in common with the settlers of our town who arrived here over a century earlier. There is a Lebanon Elementary Public School (LEAP Elementary) but not a Lebanon School District (the Watertown Unified School District’s mascot is the Goslings, not the Cedars!). And, there’s an unincorporated community nearby called [Old Lebanon](#), home to the world’s largest cheese curd! I guess Old Lebanon’s Wikipedia page is proof you don’t need a lot on your page to justify its existence.

### Who collected these philatelically created gems?

John H. Wirt was a member of the Lebanon Stamp Collectors Club and a prominent member of the community, who served as the clerk of the orphan’s court in Lebanon County. He passed away suddenly on February 19, 1954, at the age of 52. The newspaper account disclosed that he was under the care of physicians for a heart condition, and his [death certificate](#) lists three different heart problems as causes of his death.

Even though Mr. Wirt was born in 1901, he saw combat during World War II overseas in the 80<sup>th</sup> Infantry Division, which was under the command of General George Patton. The newspaper account also noted that he served under Lt. General Alexander M. Patch, whose name has resurfaced recently due to the controversy surrounding whether to preserve his family’s Lebanon home, which stands on the grounds of the old Lebanon Catholic High School, and likely stands to be demolished.

Mr. Wirt was remembered as “an avid collector of antiques, coins, stamps, and firearms”, and as “one of the most noted students of the county’s history.” He was a member of both the LSCC and the Lebanon

County Historical Society. It has been a pleasure for me to document this little collecting project that he undertook over 90 years ago.



*Lebanon Daily News, February 19, 1954*

### **Lebanon Stamp Collectors Club Calendar**

**Please contact the editor if you are interested in presenting at one of our monthly meetings.**

<b>Date</b>	<b>Presenter and Subject</b>
February 17, 2026	My Father's Stamp Collection, by Doug Lotz
March 17, 2026	
April 21, 2026	
May 19, 2026	
June 16, 2026	Meeting at Cornwall Manor, program to be determined
July 21, 2026	
August 18, 2026	
September 15, 2026	
October 20, 2026	
November 17, 2026	
December 15, 2026	LSCC Holiday Dinner

**The Lebanon Stamp Collectors Club thanks the Philatelic Society of Lancaster County for hosting our affiliate page, which is accessible by clicking the following link:**

[The Lebanon Stamp Collectors Club – Philatelic Society of Lancaster County \(lcpstamps.org\)](http://lcpstamps.org)

**The PSLC Events Calendar is located at the following link:**

[Philatelic Society of Lancaster County – Award-winning, non-profit community organization dedicated to promoting stamp and postal history collecting as a hobby for education and fun. \(lcpstamps.org\)](http://lcpstamps.org)



**The Lebanon Stamp Collectors Club Lebanon, PA 17042 – 17046**

**Scott Ney, newsletter editor**



The  
Overprint

**Newsletter of the Reading Stamp Collectors' Club**

Meetings held at Calvary Lutheran Church,  
1009 Elizabeth Avenue in Laureldale.

Elizabeth Avenue crosses Kutztown Road in the Muhlenberg Township  
area.

(About a mile north of Rt 222 )

Meetings are the first Tuesday of each month at 7:00 p.m.  
(doors open around 6:30 for pre meeting social time)

**Issue: 2026 - 02**

**MARCH MEETING: TUESDAY**

**MARCH 3<sup>rd</sup> 2026**

**BRING YOUR MOST RECENT PURCHASE  
(THIS COULD BE BACK IN 2025)**

**CLUB DUES ARE OVERDUE:**

If you haven't yet paid for 2026 please send a \$ 10.00 check made payable to RSCC and send to Attn: Mike Bach 12 Colorado Avenue, Sinking Spring PA 19608. If I do not receive them by February 28<sup>th</sup>, I will be hounding you!!!

**TREASURER'S REPORT:**

Current Account as of 12/31/2025: \$ 765.80

Savings Account as of 03/14/2025: \$ 3,414.63

**GREENLAND HAS BEEN IN THE NEWS A LOT LATELY:**

I came across this rather nice article re: an issue back in 1995.

Greenland has a strong history of unity and community, and this sense of togetherness is often celebrated in the stamps issued in Greenland, as they are always focused on local heritage and Greenlandic culture.

To celebrate this incredible Greenlandic sense of community, Tusass is currently offering a free gift with all orders, and fittingly, the gift is a souvenir sheet, celebrating the 10th anniversary of the Greenlandic flag in 1995.



**Note to Readers: As this article goes back to 1995, I don't think this souvenir flag gift is still available**

---

**DID YOU KNOW THAT A STAMP IS FEATURED CENTER STAGE IN A PLAY CALLED "MAURITIUS". THE FOLLOWING ARTICLE IS A WRITE UP OF A PRODUCTION FROM MATTITUCK, NORTH FORK AT THE END OF LONG ISLAND**

### **Theater Warning: Stamp Collecting Can Be Dangerous**

Unless you're a die-hard theater buff or a stamp collector, you've probably never heard of the play "Mauritius," which opens at the North Fork Community Theatre in Mattituck this evening. But this "tight little jewel box of a play," as described by the DC Theatre Scene, should really be on your radar.

First run on Broadway in 2007, playwright Theresa Rebeck's tale of two sisters at war over an inherited rare stamp collection, and the philatelic con artists who conspire to take advantage of them, covers the full gamut of the games humans play, and how those games unravel.

Walk into Phillip's stamp shop at the opening of this play and you'll find a young woman, clutching a red, leather-bound book of stamps to her chest, as Phillip refuses to give her the time of day (he's seen too many inheritors of stamp collections walk in expecting to make their fortune by cashing in a loved one's treasured possessions).

Another man listens in, his face buried in a copy of the *Daily News* plastered with the headline "Blatant Greed." Before she leaves, the second man manages to catch a glimpse of the extremely rare stamps in her red book.

Now you're all set up. Of course, there's more....

"I love this show. It's a show that has a melodramatic structure, yet there's fun. It's sort of a light take on the con," says director Bob Kaplan, who is one of the few people you'll ever meet who's directed "Mauritius" twice.

"I also love the individual characters," he added. "It's about family, and it's about money, of course, and collecting and art and whether it commodifies art."

“I think I’m the only person who’s done it twice,” he said of the show. “I’ve never seen it advertised on Long Island. I did it 12 or 13 years ago at Hampton Theatre Company, and I wanted another crack at it.”



Now meet our villains: Jackie, played by Becky Adams-Korn, cared for her mother as she died of cancer, while her half sister Mary, played by Gillian Schroeder, didn’t return home until just before their mother died. While Jackie claims the moral high ground of having cared for their mother, the stamps had actually belonged to Mary’s paternal grandfather — no relation to Jackie. That grandfather was like a father to Mary after her own father died. He loved the stamp collection, and she loved him dearly.

Mary didn’t know that just one of two rare “Post Office” stamps in the collection, from the Indian Ocean island of Mauritius, had recently fetched \$7 million at auction. But Jackie did, and so did con artists Dennis (Wade Karlin) and Sterling (Phil Eberhardt, reprising the role he’d played in the Hampton Theatre Company production), and the proprietor of the stamp shop, Phillip (Matthew O’Connor).

They know the sisters have the stamps, and now the only question is which of these five characters can claim the highest level of Blatant Greed.



**I think I see an Inverted Jenny or two in the backdrop**

## **Boston 2026 show medal unveiled: By Linn's Staff**

The official show medal for the Boston 2026 World Expo has been unveiled, with sponsorship provided by the Spellman Museum of Stamps and Postal History in Weston, Mass.

The three-inch square medal weighs 4.5 ounces and features the Boston 2026 logo on one side and an image of Paul Revere on his well-known midnight ride on the other. The design reflects the exhibition's broader theme marking the 250th anniversary of the founding of the United States.



David Ball, Boston 2026 awards chair and security manager, coordinated the design and production of the medal. Ball approached designer Aija Pince, a British expatriate living in Riga, Latvia, after seeing her work for Latvia's PhilLat26 international exhibition.

After considering several design concepts tied to Boston and the surrounding region, the pair selected Paul Revere as the figure most closely associated with the period being commemorated. The show logo, created by U.S. stamp designer Richard Sheaff, appears on the reverse.

Production of the medal was awarded to the Monterey Company, Inc. of Bend, Ore. The firm was selected for its ability to reproduce perforations along the medal's edges, a feature intended to echo philatelic design. The die-cast base metal medals are buffed, plated with precious metal, and antiqued. Several finishes will be produced, with a total mintage of 1,300. For more information, visit the company's website, <https://montereycompany.com>.



**The Reading Stamp Collectors Club**

**Mike Bach, newsletter editor**