

THE CARD – Vol. 36, No. 12, Issue 417, December 2025

A Publication of the Lancaster County Postcard Club, Lancaster, PA

Enjoying postcards through education and entertainment.

Next Meeting: December 15, 2025 Park City Diner 12:30 PM

Like us on Facebook – www.facebook.com/LCPClub.

<http://www.lcpc-stamps.org/newsletter-archive/the-card/>

NOVEMBER MEETING

The November meeting of the Lancaster County Postcard Club was held on the 17th with 18 people attending. The meeting started with a very interesting program of Postcards and Posters of Women in World War I by Pam Tronsor.

The meeting, led by Susan Glass, followed the program with the secretary and treasurer's report. The Treasurer reported a balance of \$1,775.57. The Treasurer, Barbara Mowrer will be collecting dues of \$15 in March for 2026.

Following a decision by the Board prior to this meeting, it has been decided to discontinue publication of a newsletter and meetings in January and February. This decision was made due to rising expenses. The members have been asked to consider receiving their newsletters by e-mail to save costs to the club. Currently 48 newsletters are printed and mailed at a cost of \$100 per month. Pam Tronsor was picked to be President for 2026. Susan Glass will be Vice President. Jeanne Schopf will continue as Secretary and Barbara Mowrer will continue as Treasurer.

The Christmas luncheon will be held at Park City Diner on Monday, December 15th at 12:30PM. Each member will be asked to contribute \$5 for the lunch.

Door Prizes were won by Leighton Stover and Brian Frankhouser. The 50/50 drawing of \$9.00 was won by Jeanne Schopf.

Respectfully Submitted,
Jeanne Schopf, Secretary

2026 PROGRAMS

January: NO MEETING

February: NO MEETING

March: Members Market

April:

May:

June:

July: Picnic

August: Expo

September: Gisela Withers

October:

November: Pam Tronsor

December – Holiday Party



DECEMBER HOLIDAY LUNCHEON

We will be going to the Park City Diner in Lancaster, PA for our annual Holiday get -together. The festivities will begin at **12:30 PM**. Each person attending is asked to contribute \$5.00 towards the meal; the club will pay the rest of the tab. Please call Susan Glass H-(717) 872-0810, C-(717) 371-7846 or sfg47@comcast.net to reserve your spot if you did not sign up at the November meeting. We will be meeting in a separate room.

PRESIDENT'S MESSAGE

The end of 2025 is approaching much too fast for me. Do you have as many things on your "to do" list as me? I'm hoping that many of you will be able to join us on December 15th for a good time with friends. I am hoping that the weather cooperates. If we have a snow storm that may change things.

Prior to the meeting the Board met to discuss plans for 2026.

Finances – Comparing the October 2024 Treasurer's report to the October 2025 report we are down by \$800.

Dues – if everyone renews that will help.

Farm & Home Center – will rent stay the same?

Newsletter – printing & stamp cost

To lower expenses there will not be a meeting in January & February. The first newsletter for 2026 will be in March.

Please consider doing a program in 2026 – there are many open months. I know you have a favorite collection of postcards that you can share with members. Pick a month from the calendar that works for you and let me know what equipment you need to show your cards. Everyone likes looking at postcards!

Another way to help is to volunteer at the Club Table or help with the postcard competition.

My wish for each of you a Happy Christmas and all the best for a Happy New Year!

Susan

Jeffery Truck Demonstration

By Brian Frankhouser

During the holiday season in 1914, Lancaster residents had more than Christmas shopping occupying their leisure time. Local automobile dealer, Butzer Brothers, recently received the much-publicized four-wheel drive trucks from the Jeffery factory, and was sponsoring demonstrations of the truck's innovations and durability for the public's entertainment. The dealership showcased the truck's capabilities in early December near their Ephrata location, testing the loaded vehicle on the biggest hills the area had to offer. The final local publicity stunt was scheduled for December 4 at the Lancaster courthouse where the machine would traverse the steps in front of the landmark!

The two-ton quad truck was developed and manufactured by the Thomas B. Jeffery Company in Kenosha, Wisconsin, and introduced in 1913. The Jeffery team was no stranger to innovation. Thomas built his first prototype horseless carriage in 1897. His son, Charles, was one of the first to experiment with steering wheels and front-mounted engines in 1901. The company was the second (after Olds) to use assembly line manufacturing in 1902 when the Model C was first built. The early automobiles made by the company were called Ramblers, but in 1914, Charles Jeffery changed the name to "Jeffery" in honor of his father, who died in 1910.

The quad truck was a great idea for its time. In those days, paved streets were scarce outside of urban areas, and the four-wheel drive function prevented many passengers from getting stranded on the muddy roads. As a testament to its quality, it was manufactured with very few changes over a period of 15 straight years! The vehicle was one of our country's best "work horses" during the first World War. In 1916, Charles W. Nash purchased the company. It was renamed "Nash Motors" a short time later. Nash merged with Hudson Motors in 1954, forming the American Motors Corporation (AMC). In 1987, AMC was acquired by Chrysler.

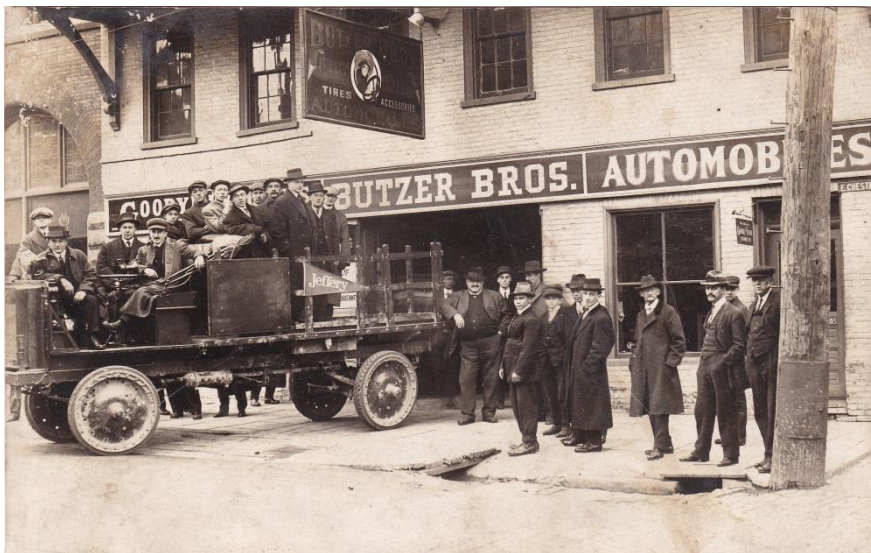


Photo #1:

Real photo postcard shows the Jeffery quad truck leaving the Butzer Brothers dealership on East Chestnut Street. The day's events would be well documented by local photographer, Sherman D. King, who's life was just as interesting as any photos he took. He spent time in local politics, insurance, jail, and even working for Barnum & Baileys circus.



Photo #2:

The truck was driven down Duke Street and turned onto East King. This real photo postcard shows it making its way through the crowd on East King Street in front of the Farmers Trust Company. An estimated 5,000 spectators gathered on a chilly Friday afternoon to watch. Around 2:00PM, it reached the base of the steps at the courthouse.



Photo #3:

The steps at the courthouse had an incline grade of 64%. The truck slowly moved its way up the 17 steps as the crowd cheered. It was driven by W. S. Butzer of Ephrata, and his passenger was the Jeffery factory representative from Philadelphia, R. L. Butler. This real photo postcard shows the truck stopped at the top of the steps waiting for the photographer to take the publicity pictures.

Editors Note:

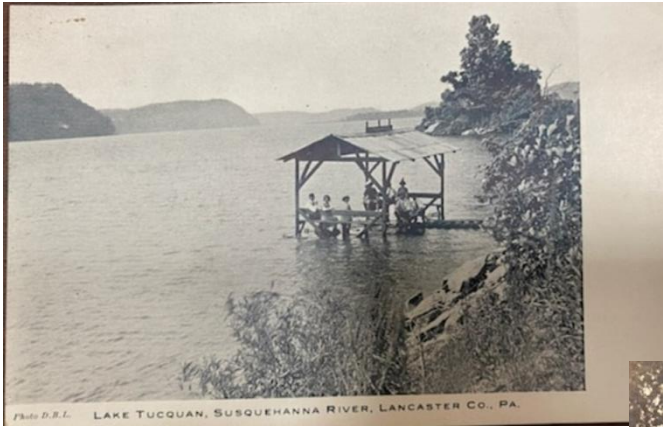
I made a mistake in last month newsletter. When I do the newsletter I use the previous month as a template. When I entered Brian's article in the newsletter I forgot to change the title. The correct title is "Lancaster's First Marathon Dance"

MEMBERSHIP DUES

Dues are usually collected in March but you may pay your 2026 dues anytime. The rate remains the same - **Individual dues are \$15.00 or \$20.00 for two people residing at the same address.** You can pay Barabra Mowrer at the March meeting or you may send a check to:

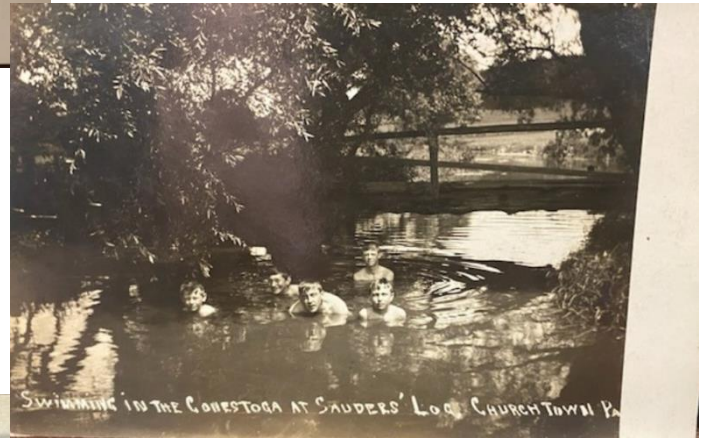
Barabra Mowrer
4614 Marietta Avenue
Columbia, PA 17512

NOVEMBER POSTCARD COMPETITION "Rivers "

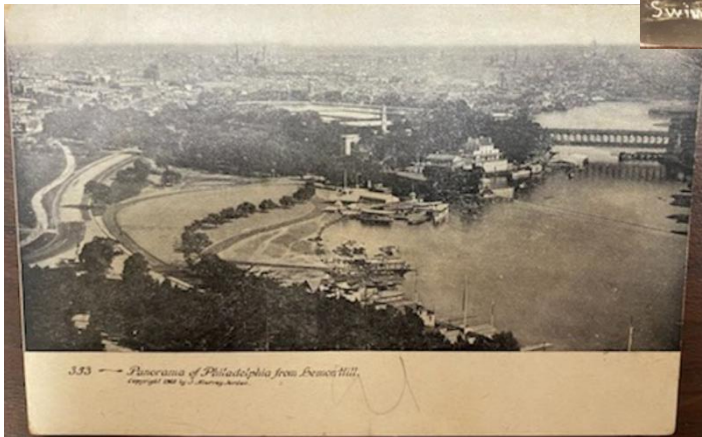


First: Leighton Stover
Lake Tucquan"

Second: Brian Frankhouser
"Swimming in the
Conestoga at Churchtown""



Third: Annetta Buettner –
"Schuylkill River"



NOVEMBER POSTCARD COMPETITION

Seven (7) members participated in the postcard competition of "Rivers".

2026 POSTCARD COMPETITION SUBJECTS

March: Clocks

April: Mail Delivery

May: Famous People

June: Wonderful World of Animals

July: Men/Women at Play

August: Expo

September: Sports

October: General Stores

November: Musicians at Work

First: Leighton Stover – "Lake Tucquan"

Second: Brian Frankhouser – "Swimming in the Conestoga at Churchtown"

Third: Annetta Buettner – Schuylkill River"

Honorable Mention: Pam Tronsor – "Loreli on the Rhine River", Donna Bashaw – "Lancaster-York on the Susquehanna River", Jeanne Schopf – "Beautiful River in Germany", Gisela Withers – "Smith River"