

Postal Service: Insights into Local History

**NEW ENGLAND,
NEW YORK,
NEW JERSEY and
PENSILVANIA.**

By H. Moll Geographer. 1729.

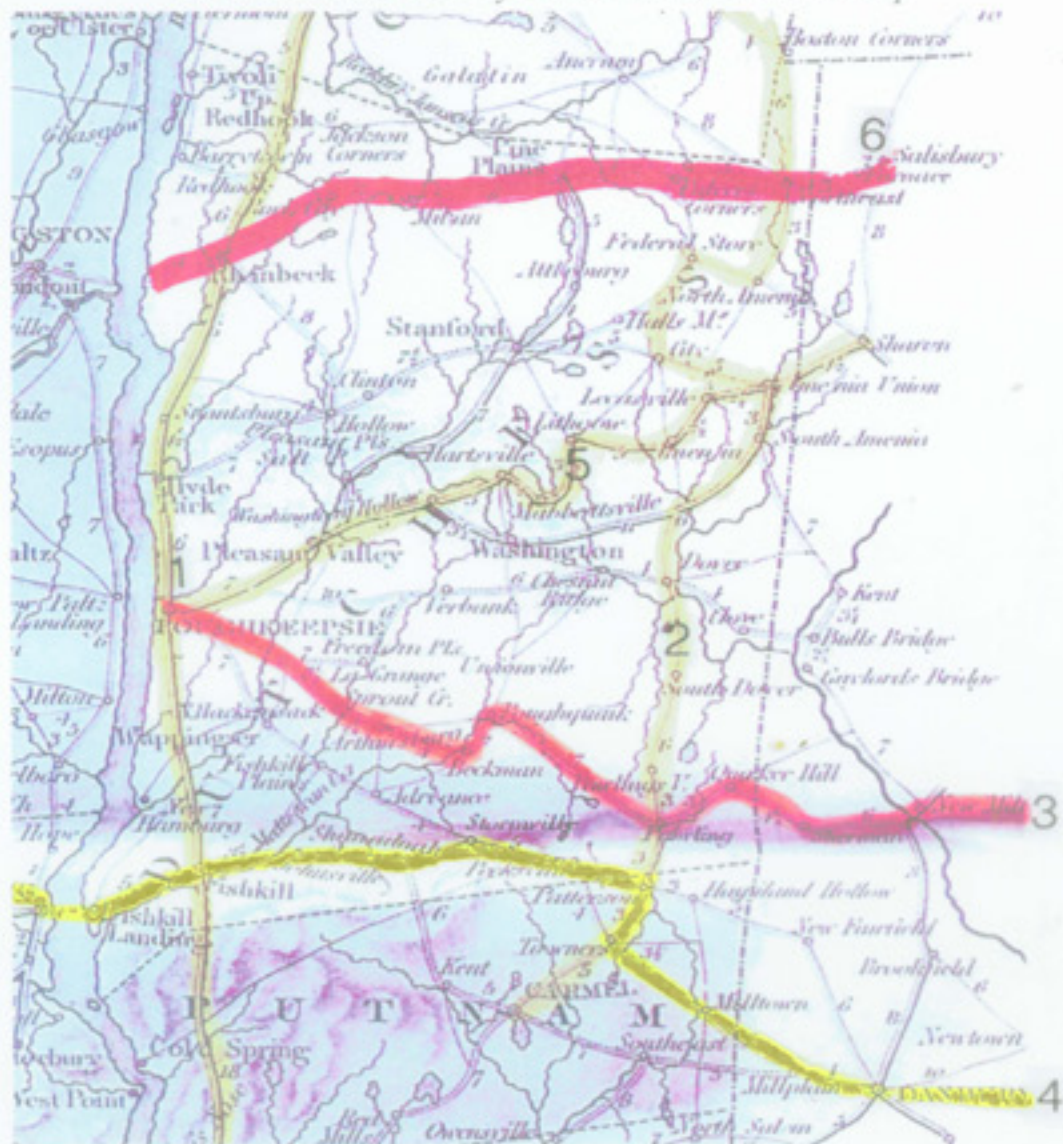


An Account of the Post of the Continent of Nth America as they are Regulated by the Postmasters Gen^l of the Post House.

The Western Post sets out from Philadelphia every Fryday leaving Letters at Burlington and Perth Amboy and arrives at New York on Sunday night; the distance between Philadelphia and New York being 106 Miles. The Post goes out Eastward every Monday morning from New York, and arrives at Scabrook Thursday noon; being 150 Miles, where the Post from Boston sets out at the same time; the New York Post returning with the Eastern Letters, and the Boston Post with the Western. Bags are dropt at New London, Stommington, Rhode Island, and Bristol. The Post from Boston to Piscataway being 70 Miles leaves Letters at Ipswich, Salem, Marblehead and Newberry. There are offices kept at Burlington, Perth Amboy in New Jersey, New London and Stommington in Connecticut, at Rhode Island, Bristol, Ipswich, Salem, Marblehead and Newberry. and the 3 Great Offices are at Boston, New York & Philadelphia.

— Some early postal routes

1839 Dutchess County & Area Postal Route Map



Routes are numbered according to the table.

MAIN STAGE/POST ROUTES SERVING DUTCHESS COUNTY

The main (postal) stage roads were in place from colonial times. As communities were established other roads were developed to connect them. By the early 1800s the basic road network was in place.

| Postal Stage Route | Region(s) | Origination/Destination |
|---|-----------|------------------------------|
| 1. Albany Post Road (now Rt. 9) | 1 | New York City/Albany |
| 2. Drover's Road/State Road (Rt. 22) | 2 | New York City/Bennington, VT |
| 3. CT/Poughkeepsie Road (Rt. 55) | 1,2&5 | New Milford, CT/Poughkeepsie |
| 4. Danbury Road (US Rt. 6 & Rt. 52) | 4 | Danbury, CT/Fishkill |
| 5. Dutchess Turnpike (Rt. 44) | 1,2&5 | Sharon, CT/Poughkeepsie |
| 6. Rhinebeck/Salisbury Rd (Rts 199/308) | 1,2&3 | Rhinebeck/Salisbury, CT |

Henry B Lee 2 Apr 1811
Lawyer, politician

Epenetus Crosby 28 Feb 1817
Inn keeper

Henry Hayt 8 Mar 1825
Merchant

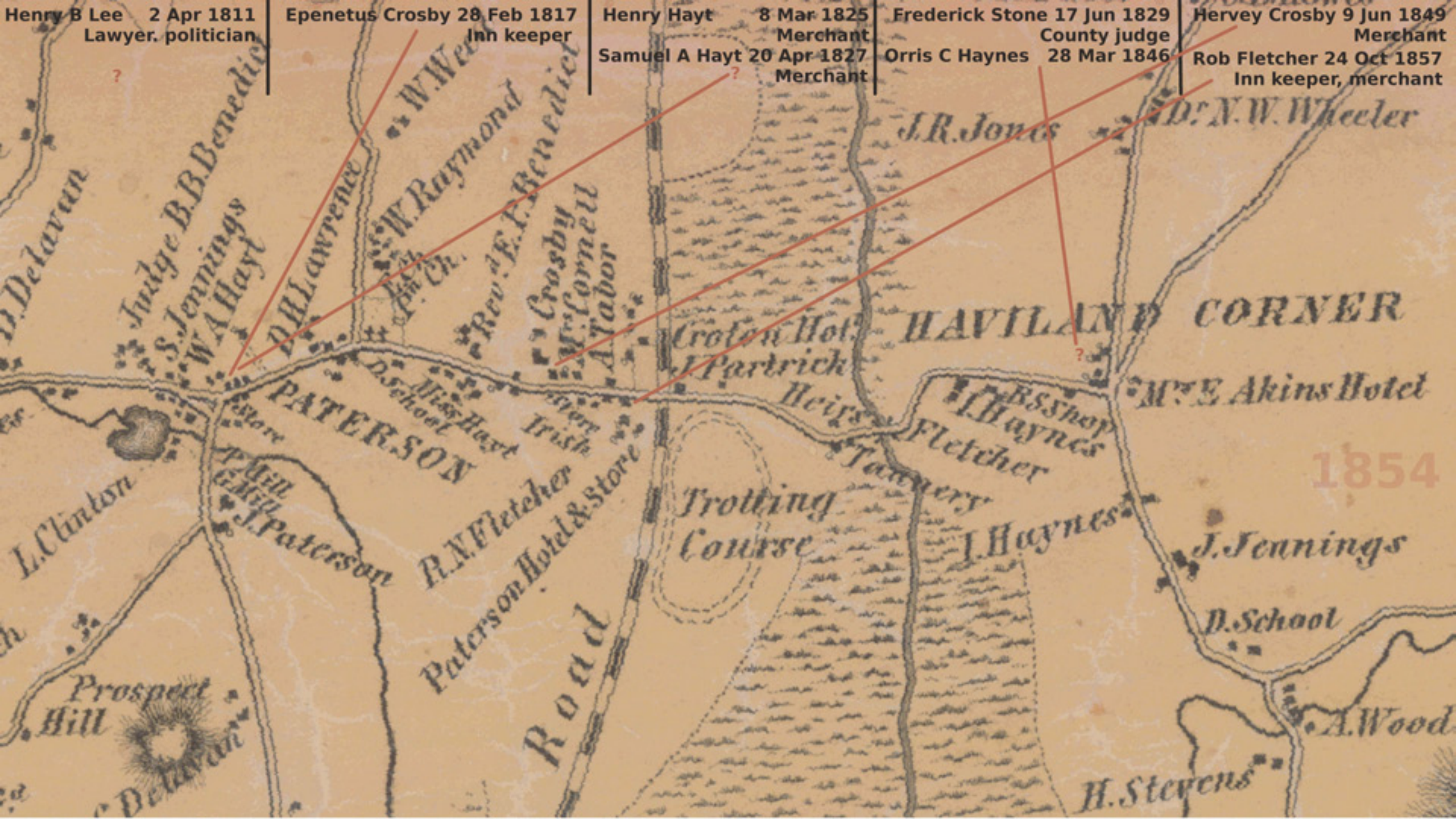
Frederick Stone 17 Jun 1829
County judge

Hervey Crosby 9 Jun 1849
Merchant

Samuel A Hayt 20 Apr 1827
Merchant

Orris C Haynes 28 Mar 1846

Rob Fletcher 24 Oct 1857
Inn keeper, merchant



D. Delavan

Judge B.B. Benedict
S. Jennings
W.A. Hayt

D.H. Lawrence

W.W. Raymond
Rev. F.F. Benedict

Crosby
M. Cornell
A. Tabor

Croton Hot.
J. Partrick

J.R. Jones

D. N.W. Wheeler

HAVILAND CORNER

M.E. Akins Hotel

PATERSON
Store
J. Paterson

D. School
Miss Hayt
Irish
R.A. Fletcher
Paterson Hotel & Store

Trotting
Course

Haynes
Fletcher
Tannery
J. Haynes

J. Jennings
D. School

L. Clinton

Prospect
Hill

1854

A. Wood

H. Stevens

Road



Robert N Fletcher 24 Oct 1857
Hotelkeeper & Merchant



1931



Joseph L Irish 17 Dec 1866
Dry Goods, Groceries, & Clothes



1931



Lewis G Pugsley 8 Aug 1871
Dry Goods & Groceries





John K Wyatt 23 Jul 1885
Putnam County Clerk



1931



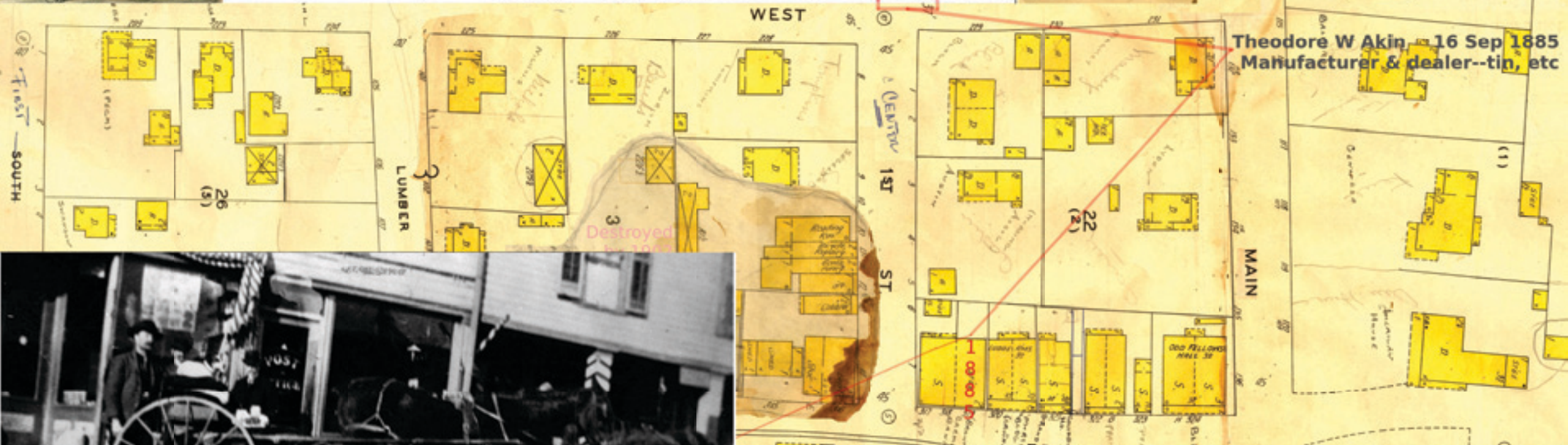
Theodore W Akin, 16 Sep 1885
Manufacturer & dealer--tin, etc



1931



Railroad Street, PATTERSON, N. Y.





1931



David Baldwin
9 Jul 1892
Feedstore

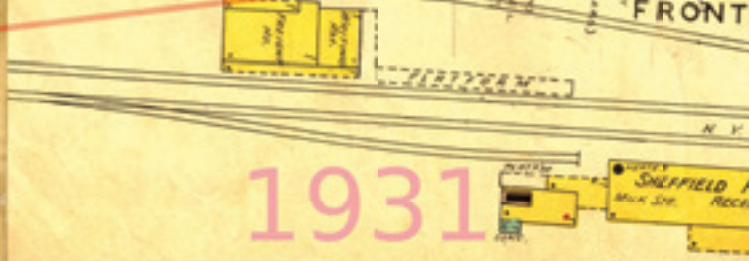
Destroyed by 1902
Fire

1931

Railroad Street, PATTERSON, N. Y.

1893

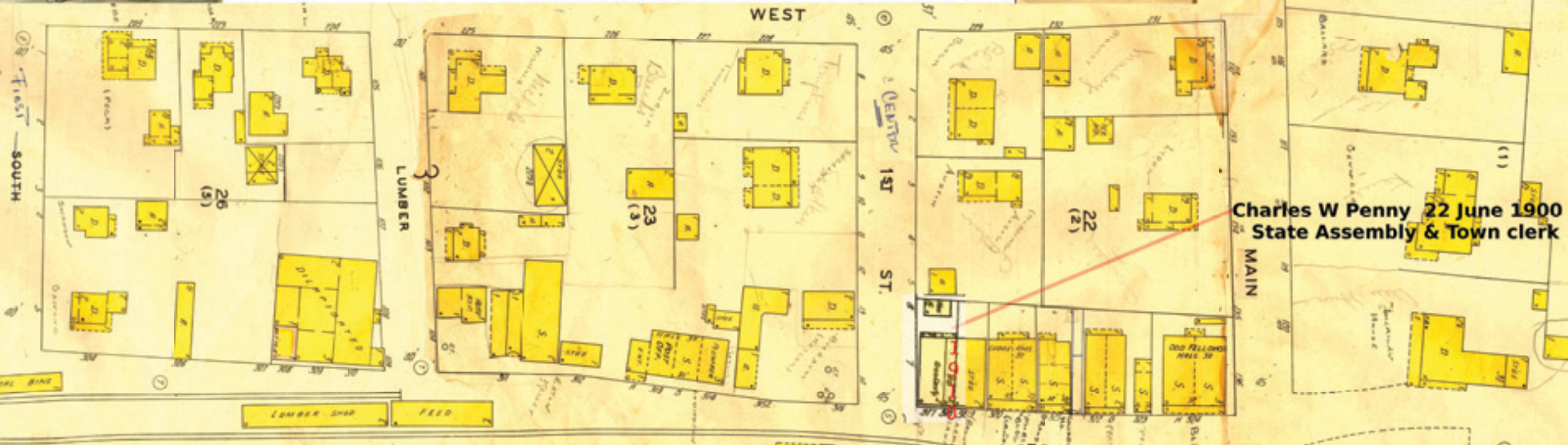








1931



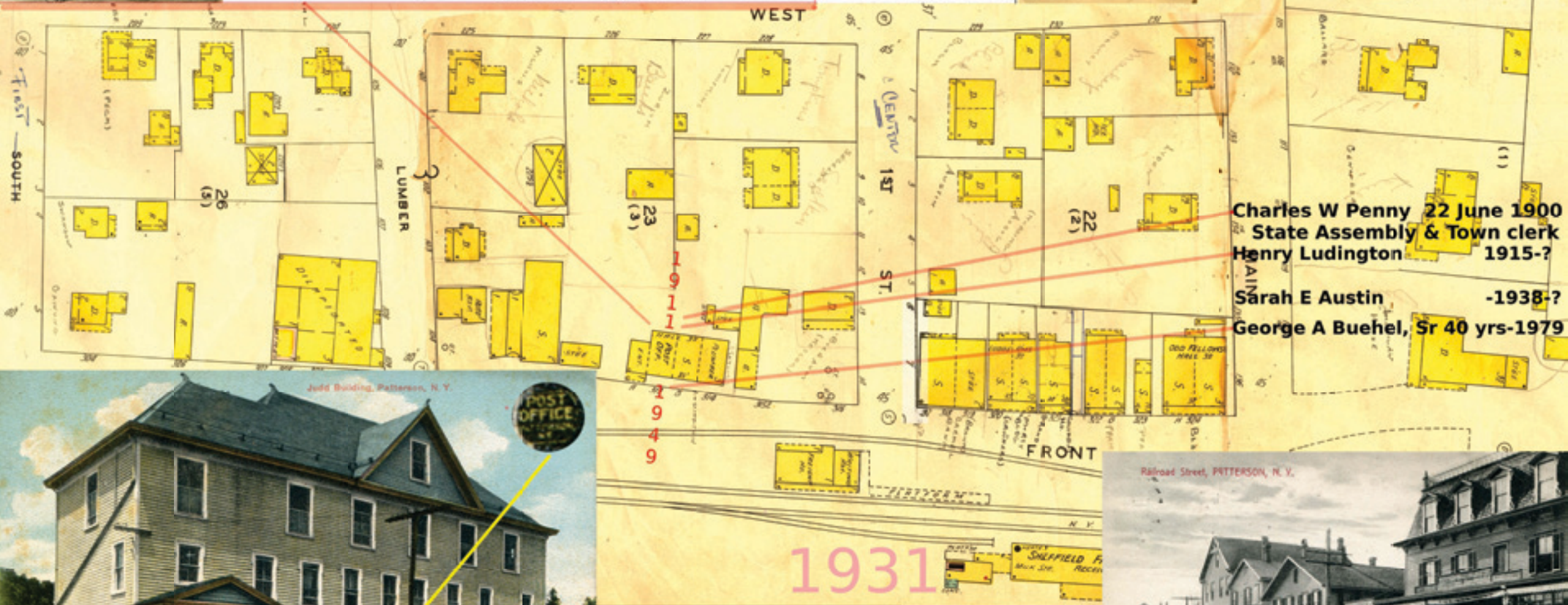
Patterson

(presidential office from February 10, 1902)

Established in Dutchess county : April 2, 1811

Located in Putnam county : June 12, 1812

| Postmaster | Date of Appointment | Fiscal Year | Postmaster Compensation | P.O. Dept. Receipts |
|-----------------------------------|----------------------------------|-------------|-------------------------|---------------------|
| Henry B. Lee Epenetus Crosby | 2 April 1811 28 February 1817 | 1816 | 18.51 | |
| | | 1817 | ----- | |
| | | 1819 | 21.14 | |
| | | 1821 | 25.27 | |
| | | 1823 | 21.05 | |
| Henry Hayt | 8 March 1825 | 1825 | 17.54 | |
| | | 1827 | 21.45 | |
| Samuel A. Hayt Frederick Stone | 20 April 1827 17 June 1829 | 1829 | not in register | |
| | | | 27.03 | |
| | | 1831 | 24.82 | |
| | | 1833 | 34.40 | |
| | | 1835 | 26.90 | |
| | | 1837 | 30.02 | |
| | | 1839 | 39.08 | |
| | | 1841 | 32.06 | 61.85 |
| | | 1843 | 69.49 | 121.14 |
| | | 1845 | 33.93 | 59.28 |
| Orris C. Haynes | 28 March 1846 | 1847 | 31.25 | 37.86 |
| | | 1849 | 47.61 | 61.75 |
| | | | not in register | |
| Hervey Crosby | 9 June 1849 | 1851 | 86.00 | 108.68 |
| | | 1853 | 79.93 | 66.42 |
| | | 1855 | 136.20 | 51.75 |
| | | 1857 | 142.72 | 99.97 |
| | | | not in register | |
| Robert N. Fletcher | 24 October 1857 | 1859 | 173.81 | 134.63 |
| | | 1861 | 187.17 | 175.76 |
| | | 1863 | 264.62 | 262.34 |
| | | 1865 | 145.86 | 134.07 |
| | | | not in register | |
| Joseph L. Irish | 17 December 1866 | 1867 | 130.00 | 107.82 |
| | | 1869 | 250.00 | 236.37 |
| | | | 290.00 | 227.70 |
| Lewis G. Pugsley | 8 August 1871 | | | |
| John K. Wyatt | 23 July 1885 | | | |
| Theodore W. Akin | 16 September 1885 | | | |
| William A. Towner | 20 May 1889 | | | |
| David Baldwin | 9 July 1892 | | | |
| Henry Tucker | 14 August 1896 | | | |
| Charles W. Penny | 22 June 1900 | | | |



Charles W Penny 22 June 1900
 State Assembly & Town clerk
 Henry Ludington 1915-?
 Sarah E Austin -1938-?
 George A Buehel, Sr 40 yrs-1979



Judd Building, Patterson, N. Y.

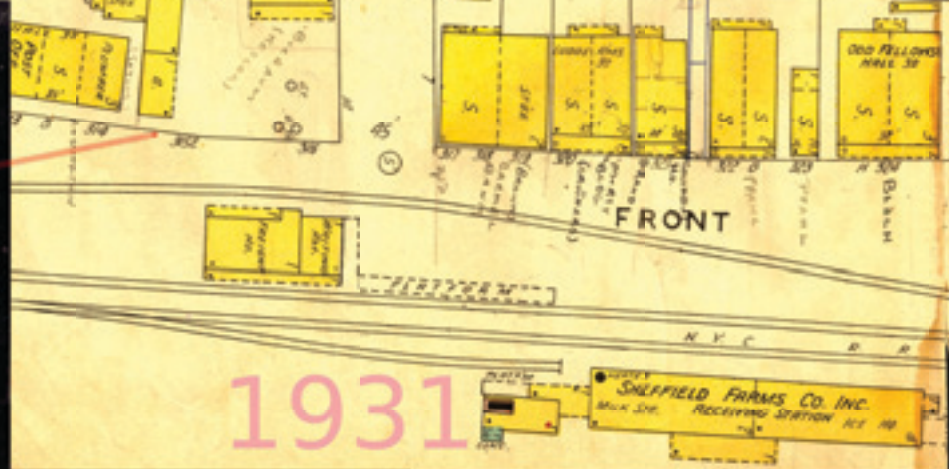
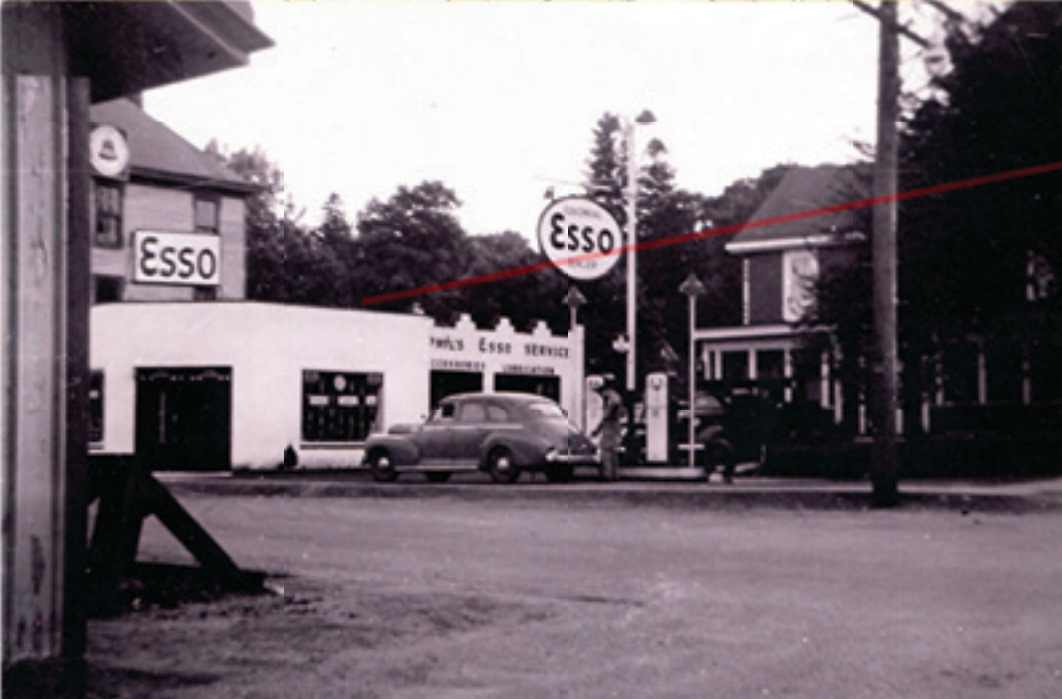


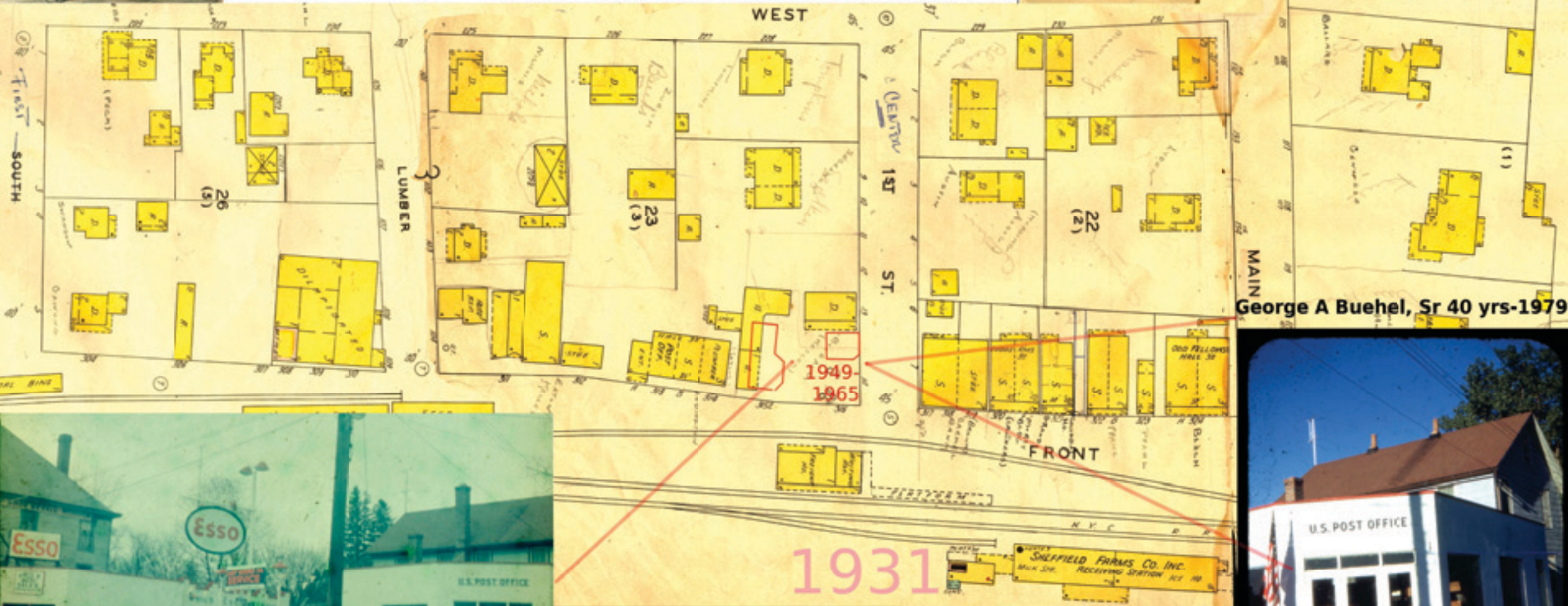
Railroad Street, PATTERSON, N. Y.





George A Buehel, Sr 40 yrs-1979

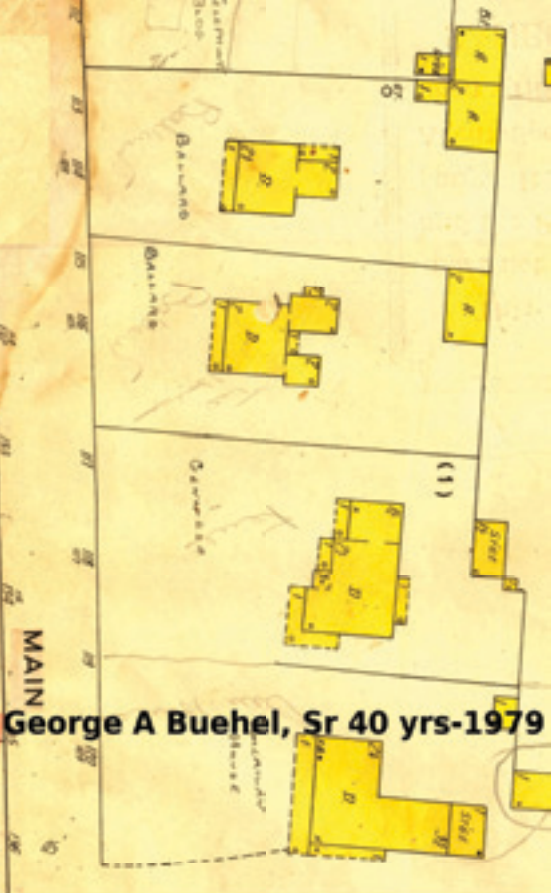
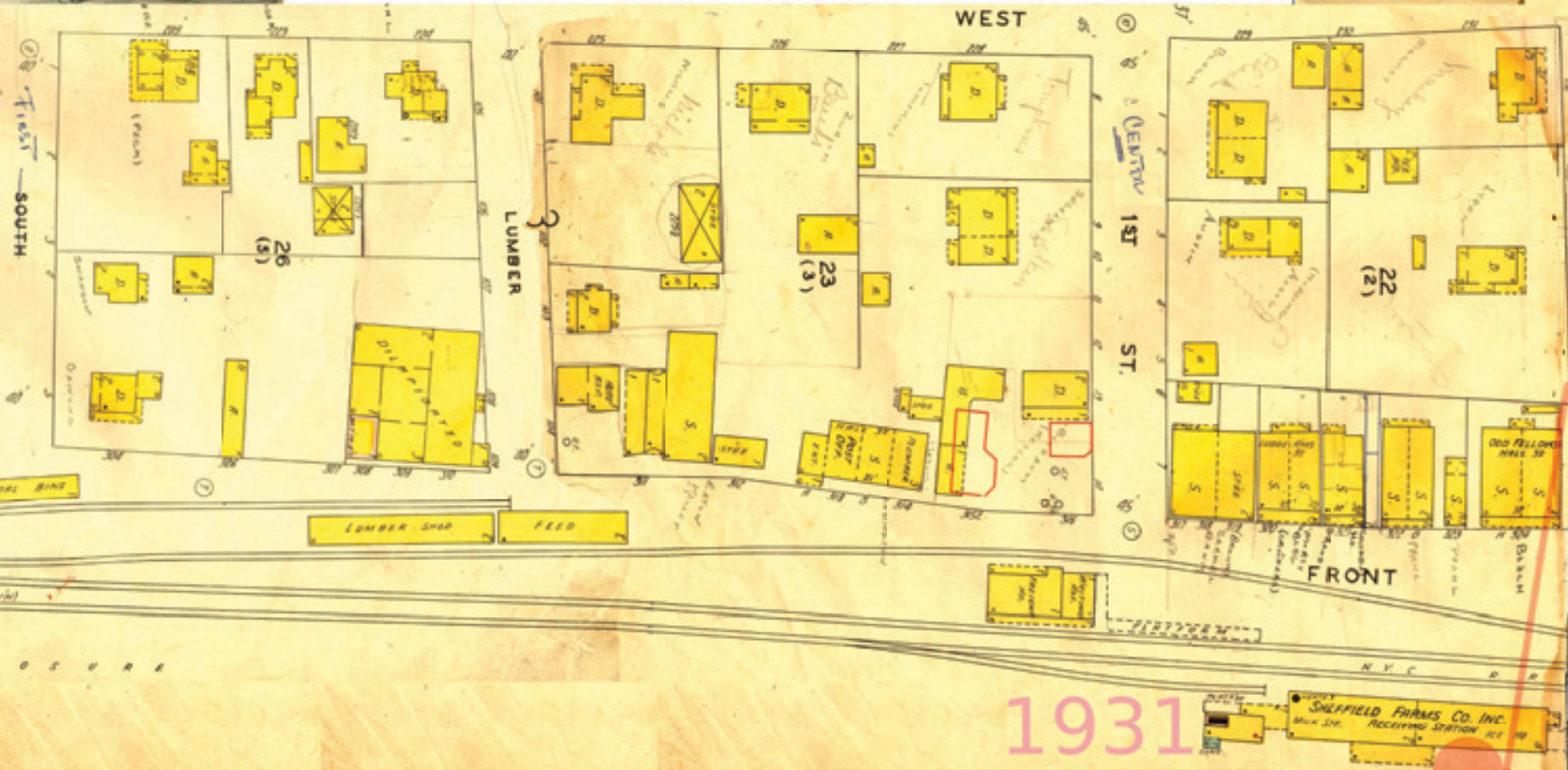




George A Buehel, Sr 40 yrs-1979



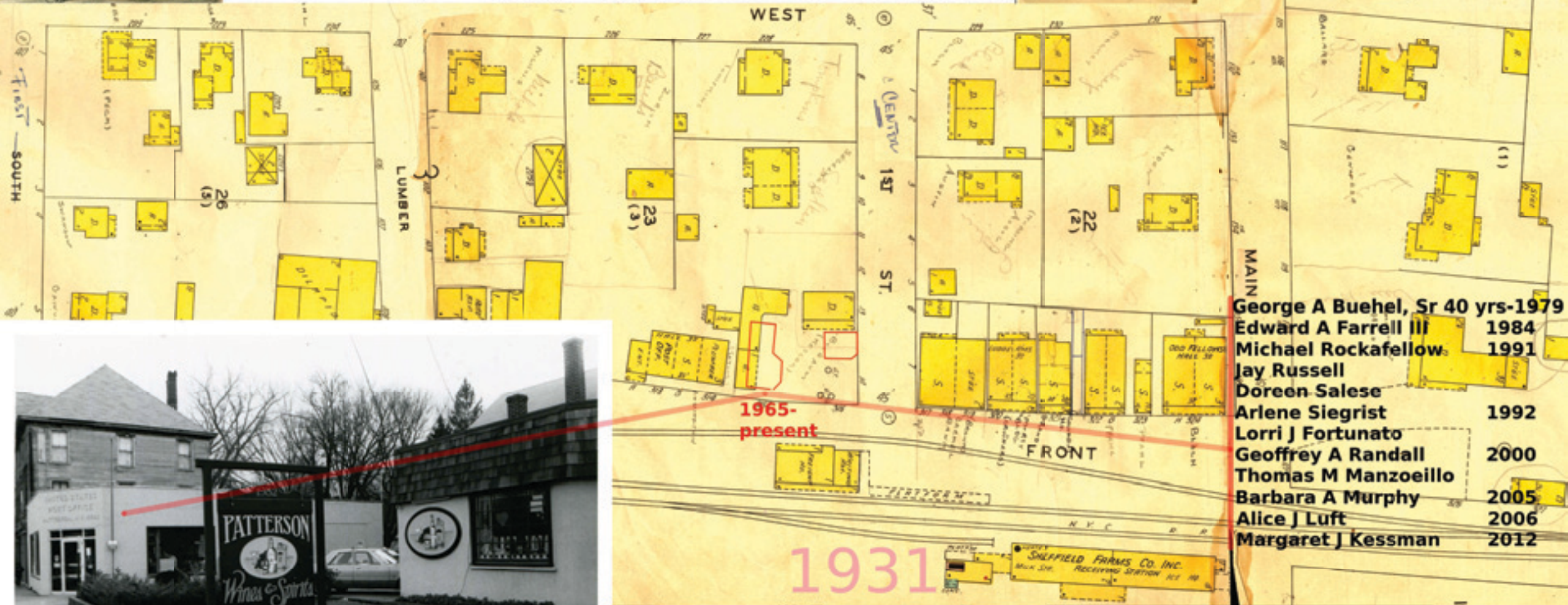




George A Buehel, Sr 40 yrs-1979



1965



- George A Buehel, Sr 40 yrs-1979
- Edward A Farrell III 1984
- Michael Rockafellow 1991
- Jay Russell
- Doreen Salese
- Arlene Siegrist 1992
- Lorri J Fortunato
- Geoffrey A Randall 2000
- Thomas M Manzoello
- Barbara A Murphy 2005
- Alice J Luft 2006
- Margaret J Kessman 2012

