



Philatelic Society of Lancaster County

**The James Buchanan Chapter 173 of the
American Philatelic Society
American Topical Association Chapter 118
Website: <https://lcps-stamps.org>**

**2nd Wednesday/Month-Meet in Person at Landis Homes at 6:30 p.m.
4th Wednesday/Month-Meet Virtually at 6:15 p.m.**

The Veranda Chronicles

As I like to say, after New Years, there is not much to look forward to in the next several months except for the NFL Playoffs and the days getting a little longer. But since moving to Lancaster and joining PSLC, I've found there is much more in this dark season for us stamp collectors. I recall one of my first meetings was the January (2014) auction, and it was a good one. Even back then I realized what a thriving club and membership I was joining, and I have never looked back. The only thing better has been serving the club over the years, the last several as your president. It has been one of my greatest honors.

And it is also the time to talk about our New Year's resolutions, especially our philatelic resolutions. Are you going to delve into those boxes you won from Dutch Country several years ago? This is not just to see what is in them but to do something with the contents, preferably to do what you had in mind at the time you made your winning bid. This would be a good beginning. Is it time to start divesting or downsizing your collection? Remember, whether you desire to sell your holdings or put them on the block, the better organized and described they are, the more your realization.

One of my resolutions is to think more about my private die proprietary stamp collection, as Paul has been badgering (encouraging, really) me to turn my findings into a book on the topic. You may recall that I share several of these issues a year with you as a feature program or as a Show and Tell item at our digital meetings. With my research into the companies behind these colorful and beautifully designed revenues, I have the makings for over a dozen short chapters already; I just have to develop a template for the consistency from one chapter and stamp to the next. These items tie so much into U.S. economic history: production data, trade practices over 150 years ago, the Civil War era, including its funding and years that follow into the Reconstruction,

19th Century advances in commercial technology, and many other concepts of historical interest. Then there are the philatelic interests such as the special paper and double transfer errors, of which there are many. There are just so many stamps and so little time!

And let me add a short note regarding scams in our digital world. A popular scam that is currently making its rounds concern emails informing you that the latest update for your application is now available. They might tell you that an update for your operating system, an Office app, word processor, photo manager, etc. is ready. "Just click on the link below," the email advises, "and you'll be good to go." Well maybe, but maybe not. *Always check that this is a valid update that is being offered.* Go to the vendor's website that supports the app in question. If you still are not sure, contact the vendor of the app and ask – but don't simply reply to the questionable email. Usually, legitimate updates come as pop-ups when you open or start to use an application.

Do your research, and make sure that the update in question has actually been issued. It can be complicated to do this, but the extra time and effort are worth it to keep your system and data safe. Don't be afraid to ask a trusted friend or family member for help. As a general rule, you should *never* click the link of an email, even an email claiming to come from someone or some entity that you know, unless you verify it is legitimate. Along the same lines, you should *never* download any attachments from this sort of email. And you should *never* provide a password or any other personal information or give someone control of your computer from a remote location. You might make these safety precautions one of your 2025 New Year's Resolutions.

Newsletter editor Scott Ney has asked me to remind you that he always welcomes newsletter submissions from our membership and has added that he has sufficient PSLC newsletter articles in the queue through February. Along with the website, YouTube Channel, and Facebook Page, the newsletter is another lifeblood of our club. It exists as an outlet for our members to share information and share their creativity for the benefit and enjoyment of our fellow Philatelists. In the coming months, please consider sharing the story behind your favorite or unusual cover or stamp, or about your greatest find. Now is the time to write, as we love to hear from you.

See you at the auction coming up. Can't wait. – Dr. Charles J. DiComo

Upcoming Programs

**Philatelic Society of Lancaster County Winter Auction
08 January 2025**

Landis Homes, first floor; Doors Open at 6:30 p.m. A short business meeting starts at 7:00 p.m. Auction starts promptly after the meeting.

This is our first in-house auction of 2025. The Society holds three (3) Auctions a year (January, June, and September). Participation in our auction is reserved for Society Members-only; however, anyone can become a member of the Society for \$10.00 on the night of an Auction. Material that our members bring for sale is generally broad in scope, from stamps, postal history,

albums, ephemera, supplies, etc., and there is a variety of both international and U.S. There is always something for everyone at a reasonable price. Why not stop by, grab a paddle and have some fun with us?

Procedures:

Please register for a numbered paddle when you arrive. Place this number on all of your items to be auctioned and use this paddle during the auction when you are bidding. This will ensure that what you buy and what you sell are accurately credited and debited.

Be sure that all of your lots are accompanied by an accurate and detailed description, as this helps buyers to better understand what they are examining.

Auction lot description forms have already been emailed and a limited number of hard copies will be available at the meeting. You may also access this form on the website at any time. While the auction lot description sheets have been sent out and are available, you can make your own as long as the pertinent info is included.

Fiscal transactions will be completed after the last lot has been sold. No early settlements will be made.

The Auction Committee recommends that you:

- Bring cash to pay for the items that you win
- Keep a running total during the auction of the items and prices of the lots that you sell and win
- Attach your sales information very securely to the lots you are entering into the auction. This will help avoid misidentification with other sellers' lots.

Bidding Rules:

- Minimum bids are \$1.00 per lot
- The minimum bidding increment is 50 cents.
- Only dues-paying PSLC members may participate in the auction.
- **Auction participants are limited to seven (7) lots.**
- You may also donate items to the auction, as donations are a welcomed, necessary source of funds for our operations, and help defray the cost of special events, storage lockers, newsletter, and website expenses, as well as advance deposits to secure special event locations.

**Foreign Christmas Seals
By Stanley Jones
22 January 2025 (Via Zoom)**

Join us for another informative presentation by Stanley Jones on one of our most popular and long-running "Cinderella" stamp issues. Stan has delivered presentations to the PSLC on American Christmas Seals, and this January he'll share his wealth of knowledge regarding their foreign counterparts.

PSLC Calendar

All meetings on the second Wednesday of the month are in person at Landis Homes, and all meetings on the fourth Wednesday of the month are on Zoom. If you would like to deliver a presentation to the club on an open date in 2025, please contact [Paul Petersen](#). Descriptions for many of these programs are found on the [PSLC website](#)

08 January 2025: Winter PSLC auction at Landis Homes

22 January 2025: Foreign Christmas Seals. Stanley Jones

12 February: The First Appearance of Lincoln on Stamps. Ron Lesher

26 February: Join the Flying Postmen to Celebrate Stamp Day in France. Larry Rosenblum

12 March: Open

26 March: A Republican Soldier in the Spanish Civil War (1936 – 1939). Jaume Balsells

09 April: Open

23 April: Open

14 May: Open

28 May: Captain Tim Healy. Rick Barrett

11 June: Spring PSLC auction at Landis Homes

25 June: Earthquakes. Rob Sternberg

09 July: Open

23 July: Rounding Up Texas Post Offices: Identifying and Locating all the Sites that a County Has to Offer. John Germann

13 August: PSLC Annual Summer Picnic

27 August: Open

10 September: Fall PSLC auction at Landis Homes

24 September: Open

08 October: 3.2 Wine and Beer Taxation. Ron Lesher

22 October: Elmer Long (or) The Post Office 75 Years Ago vs. Today. Rick Barrett

12 November: PSLC Open House and One-Page Exhibition

26 November: Open

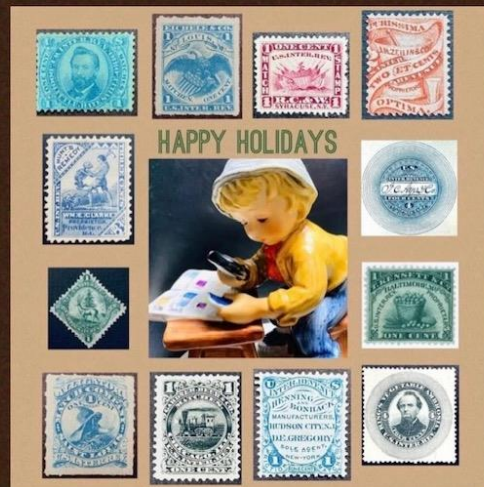
10 December: PSLC Annual Holiday Dinner

24 December: Open

2025 K2 Lancaster Stamp Shows: These are held at the Lancaster Farm and Home Center of Lancaster County, 1383 Arcadia Road, Lancaster 17601. **The first show of 2025 is scheduled for Sunday, February 9, from 10 a.m. – 4 p.m.** Don't miss it! The next show will be on June 22.

For more info about the K2 Lancaster Stamp Shows, visit the [PSLC homepage](#), or contact Kevin Kellman at k2stamps@gmail.com or +1 (301) 524-9562.

HAPPY HOLIDAYS: K2 LANCASTER STAMP SHOW, FARM & HOME CENTER, LANC., PA. DEC. 21-22, 2024



K2 Lancaster Stamp Show Schedule 2025

10am-4pm

At the Farm & Home Center,
1383 Arcadia Road, Lancaster, PA 17601

February 9, Sunday

June 22, Sunday

August 3 Sunday

October 12

December 20-21 Saturday-Sunday

For more information call Kevin Kellman @ 301-524-9562



THE PRECANCELED BATTLESHIP REPORT

“The Chamberlain Medicine Co.”

Submitted by
Stanley E. Jones and Mary Katherine Klose
Brandywine Valley Stamp Club

In 1872, Lowell Chamberlain started the first Iowa drug company in Des Moines, Iowa. It was called Chamberlain & Co. The company started after the Civil War Tax was repealed, so there are no tax stamps from that period to collect. In 1892, The Chamberlain Medicine Co. was incorporated and began national distribution of its products. Chamberlain was subject to the Spanish-American War Tax (1898-1901) and employed precanceled Battleships on its products. Chappell and Joyce [1] list two precancel types that the company employed. Type 1 was a two-line printed cancel in heavy 4.5 mm font with the company initials on the first line and the year on the second line, Figure 1. Type 1 was used on 5/8 cent and 1 ¼ cent proprietary Battleships. We have only seen it used on 5/8 cent Battleships and only in 1898. There is a listing for use of the cancel in 1899, but we have never seen that stamp.



Figure 1. Type 1 Black precancels on the 5/8 cent Proprietary Stamp, RB23. Both stamps are rouletted 5 ½.

Type 2 was a three-line printed cancel with the month and day inserted between the company initials and the year. Chappell and Joyce [1] indicate that Type 2 was used on ¼ cent, 5/8 cent, 1 ¼ cent and 2 ½ cent Battleships. We have only seen this cancel on the 5/8 cent, Figure 2 and the 1 ¼ cent, Figures 3 and 4.



Figure 2. Type 2 red precancels on 5/8 cent Proprietary Stamps, RB23. The two stamps on the top row are rouletted 5 ½. The three stamps on the second row are hyphen hole perf 7.



Figure 3. A Type 2 Black Precancel on the 1 ¼ cent Proprietary stamp, RB25. This stamp is rouletted 5 ½ and its date indicates very early usage in the tax period. This stamp was not known to Chappell and Joyce [1] and is not listed in their checklist.



Figure 4. Type 2 red precancels on 1 ¼ cent Proprietary BattleShip Revenues, RB 25. The stamps in the top row are rouletted 5 ½. The stamps in the second row are hyphen hole perf 7, indicating later usage in the tax period.

The products that Chamberlain Medicine Co. marketed were patent medicines and often came with incredible claims of the effectiveness of their drugs. For example, Chamberlain's Cough Remedy, Figure 5, was given the remarkable endorsement in Figure 6.



Figure 5. Chamberlain's Cough Syrup package and a bottle of Chamberlain's Colic, Cholera, and Diarrhoea Remedy. This picture was borrowed from reference 2.

MISS MATTIE B. GIBSON

CURED OF A SEVERE ATTACK OF BRONCHITIS

On October 18th last my little three-year-old daughter contracted a severe cold, which resulted in a bad case of bronchitis. She lost the power of speech completely and was a very sick child. Fortunately we had a bottle of Chamberlain's Cough Remedy in the house and gave it to her according to the printed directions. On the second day she was a great deal better, and on the fifth day, October 23d, she was entirely well of her cold and bronchitis, which I attribute to this splendid medicine. I recommend Chamberlain's Cough Remedy unreservedly as I have found it the surest, safest and quickest cure for colds, both for children and adults, of any I have ever used.

MRS. W. G. GIBSON,
111 Constitution St., Lexington Ky., U. S. A.

Figure 6. A Medicine Trade Card describing a miraculous cure by Chamberlain's Cough Remedy. This card was offered by an EBAY dealer and borrowed from his site.

Two additional products that were marketed by the company are: Chamberlain's Antiseptic Liniment (Figure 7) and Chamberlain's Colic, Cholera, and Diarrhoea Remedy (Figures 5 and 8).



Figure 7. A bottle of Chamberlain's Antiseptic Liniment. This was a tincture that was used to treat muscle pains and aches. This picture was borrowed from reference 2.



Figure 8. A box of Chamberlain's Colic, Cholera, and Diarrhoea Remedy. This picture was borrowed from reference 2.

The Chamberlain Medicine Co. used a variety of methods to advertise its products. For example, it distributed free cookbooks with a product pictured prominently on the cover, Figure 9. Another method was to give free books of short stories, also with a product featured on the cover, Figure 10.



Figure 9. A cookbook featuring Chamberlain's cough Remedy on the cover.

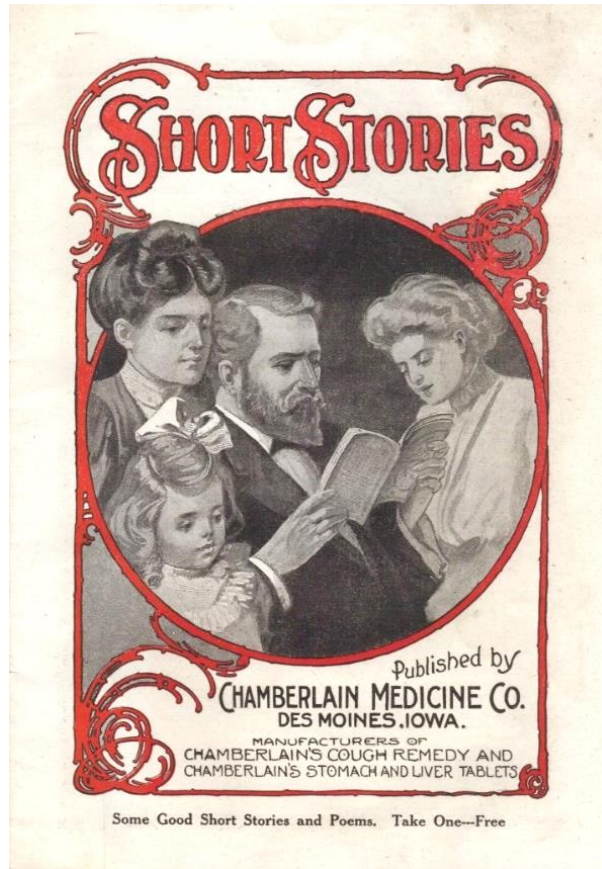


Figure 10. A book of short stories and poems with Chamberlain's Products clearly printed on the cover

In March, 1930, The Chamberlain Medicine Co. was sold to William R. Warner Co. of New York City. This was formerly W.R. Warner & Co. of Philadelphia, PA. It is interesting how W.R. Warner left Philadelphia and relocated in New York City. This will be the subject of a future article in the Battleship Revenue series.

REFERENCES

1. C.H. Chappell and Morton Dean Joyce, "Proprietary Revenues of 1898, Precanceled Varieties," *The American Revenue Association* (1957).
2. "Balm of America: Patent Medicine Collection," National Museum of American History, Behring Center, Smithsonian Institution.

The International Society of Worldwide Stamp Collectors (ISWSC)

The ISWSC is a great society if you collect worldwide issues or if you have two or more country collections. It is the quickest way to put some life into your collecting when you thought you could find nothing to add that would fit your budget. There are many benefits to joining the ISWSC, including their informative journal, multiple membership auctions, smaller study groups, resources for your questions, and many more. To me, the auction is one of the best means to shed your doubles and get some hard to find issues at great prices. Further, there are swaps, circuits, grab bags, and other activities to easily buy and sell the stamps to fill your open spaces.

ISWSC executive director and PSLC member, Dr. Joanne Murphy sent me almost a dozen copies of recent issues from 2024's *The Circuit*, the society's magazine. These magazines will be available for you at the Check-In Table with Wayne when you arrive at the January and February meetings. If this topic interests you and you desire to get a head start, you can also check out their website at <https://iswsc.org>. – Paul Petersen

PSLC Member Anniversaries

<u>Name</u>	<u>Date Joined</u>	<u>Years</u>
Lesley Ann Botte	1/01/1981	44
Richard Colberg	1/01/2001	24
Lou DiFelice	1/01/2002	23
Anthony Diodato	1/09/2001	4
Lucy Eyster	1/01/1991	34
John Ford	1/10/1995	30
William Greiner III	1/01/2011	14
David Hunt	1/11/2012	13
Doug Keefer	1/10/2018	7
Sandy Kime	1/13/2010	15
Suzanne Noble-Uhl	1/08/2020	5
Martin Peterson	1/28/2024	1
Twila Schaub	1/01/2023	2
Michael Shirley	1/01/1987	38
David Silcox	1/13/2016	9
Robert Toal	1/15/2021	4
Michael Wilson	1/31/2023	2
David York	1/01/1982	43

Happy PSLC anniversary!

Member Requests and Notices

Members of the PSLC may submit a notice of collecting interests and requests for research at no cost. Please email your requests to the newsletter editor for consideration. We will run your items for a minimum of three months unless otherwise directed.


Doug Keefer is looking for postal history items with the following Cumberland County Pennsylvania small town cancels: Grantham, Bowmansdale, Huttonsville, Shepherdstown, Williams Grove, and Williams Mill. Please contact Doug via email at keeferds@yahoo.com.

Research Request: U.S. Private Die Proprietary 'Match & Medicines' Revenues, issued stamps, post-tax labels, facsimiles on original packaging (bottles, boxes, tins), wrappers, product inserts, almanacs, billheads, etc. Looking to see images and also acquire. Contact Dr. Charles J. DiComo at charlesdicomo@gmail.com or +1 (914) 450-3791

Research Request: Material of ANY kind pertaining to well-known stamp and First Day Cover dealer Elmer R. Long. If you have any of Mr. Long's annual Collector's Handbooks, or any correspondence or interesting paper material relating to him, please contact Rick at rickbarrettmail@comcast.net anytime. If you ever met or did business with Mr. Long, he'd love to hear from you as well.

Research Request: Looking for the following DC-4 Skymaster plate blocks: C32 – 23493 LL&LR, 23494 LR, 23523 UL &LR; C33 – 23590 UL. Please contact Tom Nichols at tnicholspa@gmail.com.

LOOKING TO ACQUIRE:
Pawling, Patterson & surrounding Post Office's
in Dutchess & Putnam Counties, New York State.



Interested in Stampless, Classic, Modern Postal History; Postcards; Bank Checks; Advertisements; Victorian Trading Cards; Bank Tags; Currency, Ephemera; etc.

Also looking for additional hamlets, towns, villages: Pauling(s), Pawling(s)ville, Campbell(s)ville, Pawlings, Pawling, North Quaker Hill, Quaker Hill, Farmer's Hill, Stonehouse, West Pawling, Holmes, Haviland Hollow, West Patterson, Wingdale, Wing's Station.

Scans appreciated, fair offers made, contact
Dr. Charles J. DiComo | charlesdicomo@gmail.com

PSLC Officers

President Dr. Charles J. DiComo 914-450-3791 charlesdicomo@gmail.com	First Vice President John Hostetter 717-285-2484 jhostetterjr@gmail.com	Second Vice President Bill Greiner III 717-471-2354 sunfighter@verizon.net
Secretary David Weichert 717-342-3120 stampsbydave@gmail.com	Treasurer Lou DiFelice 717-572-3419 loudifelice@gmail.com	Publicity Len Kasper 717-723-1864 hotrodparts33@aol.com
Membership Chair Wayne Heim 717-725-7192 heimwayne@gmail.com	Program Manager Paul Petersen 717-299-5640 pcpetersen@comcast.net	Website Coordinator Dr. Charles J DiComo 914-450-3791 charlesdicomo@gmail.com
Newsletter Editor Scott Ney 717-383-1736 stnst2@aol.com	APS Rep Paul Petersen 717-299-5640 pcpetersen@comcast.net	ATA Rep Paul Petersen 717-299-5640 pcpetersen@comcast.net

General Information

Visitors are Always Welcome!

PSLC dues are \$10.00 a year. For existing members who want to renew their membership for 1 or more years, and/or make a donation to support our Society activities and programs, you can use PayPal-Friends by remitting payment to President Charles J. DiComo, PhD at charlesdicomo@gmail.com and denote in Notes section the reason for payment, your name, and how many years you are paying. Venmo can also be used @charlesdicomo. For new members, please mail/email your [Membership Application](#) along with a check or money order to Treasurer, Lou DiFelice.

We meet in-person on the 2nd Wednesday of the month (Except August & December) at 6:30 p.m. in the Crossings Meeting Room, Landis Homes, 1001 East Oregon Road, Lititz, PA 17542. See our website for directions.

We meet virtually on the 4th Wednesday at 6:15 p.m. For society information and meeting links, contact Paul Petersen (pcpetersen@comcast.net).

Visit us on YouTube: <https://youtube.com/@philatelicsocietyoflancast7393>

Visit us on Facebook: <https://www.facebook.com/philatelicsocietylancastercounty>

Our mailing address is: PO Box 6053, Lancaster, PA 17607



The PSLC is honored to be selected as a winner of the 2024 APS Star Route Awards for our website and newsletter. The Society website (lcp-stamps.org), our 24 – 7 virtual presence where philatelists all over the world can access our resources, is the winner of a Large Gold award. Our monthly [newsletter](#), which exists to inform you of upcoming Society events and give you a creative outlet to provide interesting philatelic content, is the winner of a Large Vermeil award.

Reminder: the PSLC is collecting dues for 2025

Dues remain at \$10 for yet another year. That is less than 84 cents per month. Where can you find a better deal?

Please submit your dues at your earliest convenience, to help us avoid unnecessary follow-up. If for some reason you decide not to renew your membership, which we sincerely hope would not be the case, please make us aware of that.

There are multiple ways you can submit your renewal payment:

1. You may renew **IN PERSON**: Submit a **check** (no cash) in the amount of **\$10 payable to PSLC** to Wayne Heim at the membership table when attending our monthly, in-person meeting. Meetings are held on the second Wednesday of the month at Landis Homes, 6:30 pm.
2. You may renew **BY MAIL**: **Print and complete the attached form and submit it**, with your **check** to Lou DiFelice, 1024 Woodridge Blvd., Lancaster, PA 17601-2251.
3. You may renew **WITH PAYPAL** (Family and Friends): Directions for paying online can be found on the **Philatelic Society of Lancaster County Web site, Page 1**. Payment, along with any changes to your renewal (address, phone, email, etc.) should be sent to charlesdico@gmail.com.

Thank you in advance for your prompt response to this request, as we look forward to twelve more months of interesting, entertaining, mind-expanding philatelic presentations. If you have any questions, please contact membership chair Wayne Heim at heimwayne@gmail.com

Please **clip** this **2025 Dues Renewal Application**, complete, and **mail to Lou DiFelice, 1024 Woodridge Blvd, Lancaster, PA, 17601-2251** with **\$10.00, Checks only, no cash**. Be sure to sign your check. Thank you in advance.

Name: _____

Phone: _____

Email Address: _____

Please check here if you do not require a new membership card. This action will save the club time and the cost of postage.

Please check the appropriate ATA/APS box(s) if you are a paid up member:

ATA Member APS Member

Make checks payable to Philatelic Society of Lancaster County. Please advise of any changes in address, phone/cell, email, or change in ATA/APS status.