



Philatelic Society of Lancaster County

**The James Buchanan Chapter 173 of the
American Philatelic Society
American Topical Association Chapter 118
Website: <https://lcps-stamps.org>**

**2nd Wednesday/Month-Meet in Person at Landis Homes at 6:30 p.m.
4th Wednesday/Month-Meet Virtually at 6:15 p.m.**

The Veranda Chronicles

I can't believe that 2024 is almost over and that 2025 is less than a month away! Where did it go? My grandmother warned me of this: that the years will just start to fly by. And I am seeing this happen in real time. As fast as the year has gone by, it has been a good one philatelically on all fronts; so much has happened. The PSLC maintains a strong presence in our hobby, and continues to grow. Sadly, we remember several members and friends who have passed away in the past year. I enjoyed sharing with you last month [The Analysis of New York City Postmarks on Transatlantic Stampless Letters to Foreign Destinations: The Uncommon Use of 'APL' for "April" in lieu of 'APR](#). I encourage you to check out my exhibit pages on the Presentations page.

I would like to express my gratitude to everyone who made 2024 the successful year that it has been. Our club newsletter and its editor, **Scott Ney**, have won a Large Vermeil award from APS. Scott edits the newsletter not just for PSLC, but also for the Lebanon and Reading stamp clubs, their combined [Patent – Overprint](#). Everyone who contributes articles and other content to this newsletter, great and small, enjoys part ownership of this award, as the quality of our newsletter depends greatly on those contributions. If you are not already a **contributor**, please consider working with Scott to have your philatelic writing featured in these pages!

Some consider **Len Kasper** one of our most important members, as he has provided coffee and other hot drinks each meeting, for years. Even when he is out of town, he makes sure that our thirst is quenched. **Lou DiFelice** continues as club treasurer and makes payments all month long as well as balancing the books and presenting the financial reports, all on time and in good order. **John Hostetter**, **Bill Greiner, III**, and **Dave Weichert** continue as first VP, second VP, and secretary, respectively, and **Paul Petersen** continues to coordinate the programs of our monthly meetings, providing us with speakers and programs as well as working the door prizes, donations,

and give-away items every month. Our 2025 program schedule is taking shape, so please consider grabbing a slot to present your unique perspective on a favorite philatelic topic.

A relatively recent member of the board is Membership Chairman **Wayne Heim**. He is the kind face you see when you arrive at the meeting in Lititz every month, and fills a vital role behind the scenes. Wayne is involved in meeting set-up, name tags, dues collection, recognition and the welcoming of new members, continual communication with treasurer and yours truly for the roster and dues, records of all sorts, and much more.

Our three-times-a year auction team of **Aaron Heckler, Lou DiFelice, Mike Bach, and Mark Jardel** have been steadfastly reliable and up to the job. These events are some of our most popular in-person nights. And speaking of auctions, get ready, as the next one is coming soon, Wednesday, January 8th, 2025. Get your material ready for the auction block!

Many thanks to all of you who have provided snacks throughout the past year, and ditto for those of you who have presented at our meetings. These in-person and digital presentations are all archived on our award-winning website (<https://lcps-stamps.org>) by date, and if you missed a topic, you will find it here. The .pdfs of the PowerPoints for almost all of the digital and in-person presentations are there, and you will find many of the Zoom presentations on the [PSLC's YouTube channel](#).

One final note of thanks to **Fred Sargent** and his December Dinner Committee for bringing us back to a catered buffet meal, our first since 2019, before Covid-19 struck us with such vehemence. And remember, PSLC is not just recouping; we're reloading!

Don't forget the K² Weekend Stamp Show in a few weeks. It's on the 21st and 22nd of December, a Saturday and Sunday format at the Lancaster Farm & Home Center. Celebrate the end of the year by acquiring some favorite items. Why not get your spouse that #120a invert that they've always wanted?

In conclusion, please let me wish all of you the best for a wonderful holiday season and bright New Year to come in 2025. You are the best, and I mean this sincerely. - *Dr. Charles J. DiComo*

Upcoming Programs

Philatelic Society of Lancaster County Holiday Dinner 11 December 2024

Where: Landis Homes, Large Conference room, first deck (where we often hold our Auction).

Times: Arrive at 6:30 p.m. EST or thereafter, with dinner (Self-serve buffet) to start at 7:00 p.m.

Tentative Menu: Fresh bread 'n rolls, Chicken Marsala, sliced roast beef au jus, Risotto with asparagus, vegetable medley, green garden salad with choice of dressings, chocolate cake, delicious apple pie, coffee, herbal tea, and iced water.

Cost: \$15 per person, paid at the door.

Nota Bene: There will be party favors, door-prizes, give-away items, and the Entertainment Committee is working up this year's plan. You don't want to miss it. It's our first catered December dinner since 2019 at Woodcrest Villa's Garden Café.

December 25: No Meeting this Date. Merry Christmas, Happy Holidays, and Happy New Year – See you in 2025!



PSLC Calendar

All meetings on the second Wednesday of the month are in person at Landis Homes, and all meetings on the fourth Wednesday of the month are on Zoom. If you would like to deliver a presentation to the club on an open date in 2025, please contact [Paul Petersen](#). Descriptions for many of these programs are found on the [PSLC website](#)

11 December 2024: December Dinner. Landis Homes, Large Conference room.

25 December: No meeting

08 January 2025: Winter PSLC auction at Landis Homes

22 January 2025: Foreign Christmas Seals. Stanley Jones

12 February: The First Appearance of Lincoln on Stamps. Ron Lesher
26 February: Join the Flying Postmen to Celebrate Stamp Day in France. Larry Rosenblum
12 March: Open
26 March: A Republican Soldier in the Spanish Civil War (1936 – 1939). Jaume Balsells
09 April: Open
23 April: Open
14 May: Open
28 May: Captain Tim Healy. Rick Barrett
11 June: Spring PSLC auction at Landis Homes
25 June: Earthquakes. Rob Sternberg
09 July: Open
23 July: Rounding Up Texas Post Offices: Identifying and Locating all the Sites that a County Has to Offer. John Germann
13 August: PSLC Annual Summer Picnic
27 August: Open
10 September: Fall PSLC auction at Landis Homes
24 September: Open
08 October: 3.2 Wine and Beer Taxation. Ron Lesher
22 October: Elmer Long (or) The Post Office 75 Years Ago vs. Today. Rick Barrett
12 November: PSLC Open House and One-Page Exhibition
26 November: Open
10 December: PSLC Annual Holiday Dinner
24 December: Open

2024 K2 Lancaster Stamp Shows: These are held at the Lancaster Farm and Home Center of Lancaster County, 1383 Arcadia Road, Lancaster 17601. **The final show of 2024 is scheduled for Saturday and Sunday, December 21 and 22, from 10 a.m. – 4 p.m.** Looking ahead, the first K2 Lancaster Stamp Show of 2025 is scheduled for February.

For more info about the K2 Lancaster Stamp Shows, visit the [PSLC homepage](#), or contact Kevin Kellman at k2stamps@gmail.com or +1 (301) 524-9562.

OLIO¹

Text and photos by Richard Colberg

I recently took a trip down memory lane in my second worldwide stamp album, a Christmas gift from my grandparents in 1954. This is a kid's collection from boyhood through early adulthood. The better items have been removed to specialty albums of the U.S., Great Britain, Canada and France. But there are some interesting things here that I will share with you, most of which I had little or no awareness of.



This set from Austria was accompanied by a yellow Post-it note saying that the set was worth \$169. in 2010 Scott. Well, that got my attention! These are Scott #B106-B109, issued in 1933 for the meeting of the International Ski Federation in Innsbruck, February 8-13. The stamps were sold at double their face value with the surtax going to “Youth in Distress”. The good news for me is that the mint, lightly hinged set now has a Scott value of \$208.50. And, FYI, Wettkampfe translates to “competition”.

¹ A miscellaneous collection; a medley. Merriam-Webster.



Toward the back of the album, I found these three Russian sports-related stamps. While at first, I thought they might constitute a set, I was wrong. These are the first three stamps in a 10-stamp set issued in 1935 to commemorate the International Spartacist Games in Moscow. These stamps are CTO and have a 2024 Scott catalogue value of \$9.75. How do I know they're CTO? Two clues: they're mint OG, and according to the catalogue, these games never took place! So, in this case, "nothing" has a price tag of \$9.75.



I'm embarrassed to say how long it took me to identify these three stamps. Suffice it to say it was more than an hour! The СССР was a dead giveaway as to Russian origin, however, the overprint was nowhere to be found in Scott. A search through the APS Stamp Identifier proved equally fruitless, not made easy by the Cyrillic alphabet. The initial **3A** in the overprint was similar to Yugoslavian BOB issues, but no luck there either. I gave myself a half hour break and a thought came to me. Three years ago, I had performed an appraisal of an extensive collection of Russian Locals. So, I dug into that file and there they were! Russian locals from 1925. These are the 10-, 75-kopecs and 1-ruble stamps from the 7-stamp set. It turns out the stamps had no postal value, and the entire 7-stamp set is worth about \$25.



Here's another complete set. I found that I didn't have a lot of complete sets in this old album. These Czechoslovakian mountain bird stamps are Scott #1339-1344, issued in 1965. The used set has a 2024 Scott value of \$3.20. With this cancellation I believe the stamps are CTO.



Here's another set, albeit small. In 1950 Cuba issued this 3-stamp set to commemorate the 75th anniversary of the UPU in 1949, Scott #449-451. To the right is another overprint (surcharge) on the same 2-centavo stamp. This is Scott #512 and was revalued for a postage rate increase.



Here's an interesting trio of overprinted Ecuadoran stamps. They are Scott #444-446. The un-overprinted stamps are Scott #370-372. These three stamps are overprinted in gold reading **LOOR A CHILE / OCTOBER 2, 1945**, to commemorate a visit by President Juan Antonio Rios of Chile. The LOOR A CHILE translates to PRAISE TO CHILE. This is actually a fairly large set of stamps. There are seven regular issue commemoratives, seven airmails and two postal tax stamps. The original set was issued to commemorate the 150th anniversary of the United States Constitution.



Here's another set I found. This is Belgium Q-365-Q367 Railway Post stamps, issued in 1956. I found that I had several stamps in this category, but nothing nearing completeness. Belgium has issued a real "trainload" of these stamps. Through 2007 they issued 493 of them, dating back to 1897. Most have a catalogue value of \$0.25. These three stamps picture an electric train passing in front of a building of some sort. These stamps are the same set issued in 1954 but each is surcharged by an additional 1-franc.



Here's another interesting set from Ecuador. This is actually a short set, because the 5-sucre value is missing. This set of five airmails was issued late in 1948. They commemorate Franklin D. Roosevelt and two of his "four freedoms": speech and want. The Scott catalogue numbers are C193-C196.

As you all know, when trying to research stamps like this, it can be a real task to find them in the catalogue. This one was made easier by the choice of subject – FDR. The mid-1940s was where I started, and I soon had my prey.



I include these two stamps as an FYI. They are Algeria Scott #15 and #38 respectively. The 30-centimes stamp is France #172 overprinted for use in Algeria. The 15-centimes stamp, #38, is uniquely Algerian. What puts these two stamps in the same boat is that they are both precancels. The **AFFRANCHts / POSTES** and the two-line arc are the precancel. AFFRANCHts stands for AFFRANCHISSEMENT or postage. BTW, Algeria can be fun to collect!



My final stop on this trip down memory lane concludes with another short set. These four stamps are from an 8-stamp set from Hungary commemorating United States and Russian space twin flights. The Scott numbers for the complete set are 1803-1810. These four are 1804-1807.

I am currently enjoying a visit to my home in France. In November, I bought a stamp journal called *Timbres* (French for “stamps”) at a newsstand. I subscribe to a different journal called *L’Echo de la Timbrologie*, a journal for which I have written several articles.

The title of the *Timbres* editorial caught my eye. Normally, I don't read the editorials because there's too much French for my feeble mind. The title is *Bientot le Salon, mais pour combien de temps encore?* My translation is *Soon the Salon, but how many more times?*

The Salon at issue is the *Salon Philatelique d'Automne*. A Salon is an exhibition. So, this is the autumn stamp exhibition. This is an annual event which I have attended for at least the past ten years. There are several dealers, postal administrations, sources of supplies, and a small exhibition. It's a big deal! Part of my tradition is to have a traditional two-hour lunch with 3-4 friends at a neighborhood restaurant.

For the past few years I've noticed that the number of dealer stands has decreased. It seems to me that my first Salon had about 80 dealers. Today it's between 40 and 50. That's still a bunch and more than one can cover in a day. The show lasts three days. I always go on the first day, a Thursday, hoping there will be fewer collectors because many collectors are still working!

I take an early morning train (6:54 a.m.) into Paris from a neighboring town. Depending on where I start the trip, it takes 1 1/2 - 2 hours. From the arrival train station in Paris, it's a short (6 stops) Metro (subway) ride to within 2 blocks of the exhibit space.

The editor of *Timbres* questions how long the Salon can continue. He bases this on dwindling attendance, the rising costs of exhibiting space and availability of same and, thus, passing along those costs to the dealers for their stands. Based on my experience yesterday, I question the editor's outlook.

After killing some time with a cup of coffee in the train station, I hopped on the Metro and arrived at the exhibition space seven minutes before the doors were opened. There were about 300 people ahead of me in line to get it! I toyed with just finding a bench to sit out the first entry rush but, in the end, decided to stay in line. Good idea, Colberg! By the time I got into the hall, there were another 200 people in line behind me! That was 15 minutes after the show opening.

At the entry there was a guy from La Poste (the French Post Office) handing out numbers for access to making purchases at La Poste. As I wanted to buy some current postage stamps as well as mail a letter with the show cancel on it, I took a number. It was #334. As the show had only been open for 20 minutes, I checked the overhead counter at La Poste to see what number was currently being served: 34. I was 300 numbers back! I asked a La Poste rep how long that would be; about three hours, he surmised. It's not a bad system; with a number in hand, one can do the rest of the show and check periodically to see what progress is being made. Around 11:30 I was resting in one of the many chairs provided and a lady came up to ask if I wanted a ticket she couldn't use. Its number was 214. That was a 120-number improvement for me so I took it. My mamma didn't raise no fools! At noon number 187 was up, and I went to lunch. At 2 o'clock, upon returning from lunch, number 287 was being served and I gained immediate entry to the purchase line. I was done in about 15 minutes.

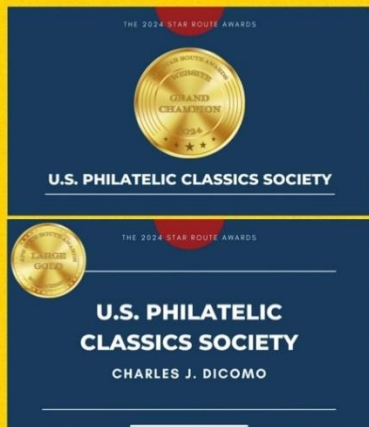
So, here's my take: I cannot dispute the editor's comments about rising costs and the availability of space for the exhibition. I'm sure he's correct. But on the first day, attendance in my estimation was huge. I've seen numbers in the past indicating that second day (Friday) attendance is about the same. For some reason, Saturday attendance drops off. I'd estimate a 3-day attendance of between 1500 and 2000. I don't think that's bad.

People were buying! Some dealer stands were so crowded that one had to just decide to return later and hope a spot opened up. The dealers were offering pretty much the same array of material as you're used to seeing in the USA: stamps, postal history, FDCs, and topicals, which are more popular than in the USA. I found a few items for my collection at a small cost. In fact, my purchase at La Poste was three times my cost for philatelic items! So, maybe, at this point in time, the problem is more about economics than the number of participants.

After such a bountiful day, at the end of the train ride back to the station where the day had begun, I was glad to see my wife for a ride home!



APS Star Route Awards 2024 Website Competition Honors



*Congratulations Charles J. DiComo, PhD: President, PSLC & ESPHS;
Life Member USPCS, Editor-in-Chief The Chairman's Chatter*

View all the winners here: <https://stamps.org/community/star-route>

And the awards are in . . .

We are honored to report that the Philatelic Society of Lancaster County (PA) website, developed, designed and managed by President Charles J DiComo, PhD, has been awarded a Large Gold in the 2024 American Philatelic Society (APS) Star Route competition.

Recently relaunched, this competition judges the various newsletters and websites of APS Chapters. Since the mid-1800s, the Star Routes were the most challenging routes in the country to deliver U.S. mail. Congress called for contractors to deliver the mail with “celerity, certainty,

and security,” soon replaced with three stars. Our Star Route chapters serve and grow the hobby in those same tough terrains with that same mission.

The Society website (www.lcps-stamps.org) is our virtual presence, where all can access current and past issues of our award-winning PSLC Newsletter, in addition to our speakers bureau, useful philatelic links, exhibits, presentations, resources, affiliates, president spotlight, regional stamp shows, history and awards, links to our Facebook page and PSLC YouTube Channel, and more!

We also commend Dr. DiComo for being awarded a Large Gold & Grand Champion and a Gold for the U.S. Philatelic Classics Society (USPCS.org) and Empire State Postal History Society (ESPHS.org) websites, respectively. This Grand Champion recognition of the USPCS website follows the same recognition earned by Dr. DiComo for his work on the PSLC website last year. Congratulations, Charlie!

We also congratulate Scott Ney for being awarded a Large Vermeil in the 2024 APS Star Route Newsletter competition. Scott has continued the tradition of Star Route Award recognition, which Editor Emeritus Dr. Paul Petersen began many years ago. Congratulations, Scott!

The full results can be viewed on the APS website: <https://stamps.org/community/star-route>.

PSLC Member Anniversaries

| <u>Name</u> | <u>Date Joined</u> | <u>Years</u> |
|--------------------|--------------------|--------------|
| Dr. Charles DiComo | 12/02/2013 | 11 |
| Ronald Hess | 12/28/2010 | 14 |
| Tom McCormick | 12/02/2019 | 5 |
| Robert Noble | 12/10/2003 | 21 |
| George Younes | 12/01/2016 | 9 |

Happy PSLC anniversary!

The November Philatelic Gathering

About a dozen collectors gathered in a cozy room on the 3rd floor of the Chester County Historical Society (CCHS) for the November 23 Philatelic Gathering. This was the last gathering of the year.

Before the program, Kean Spencer reminded the group that we use the CCHS free of charge and that any donations to the CCHS would be appreciated. He said we will meet again in February 2025 and reminded everyone to reach out to him if they want to be a presenter next year.

Kean then kicked off the program with “Puerto Rico Revenue Stamps: 1899 - Present.” Kean’s presentation was based on his exhibit of these stamps at PURIPEX 2024. This has not been a well-studied area of philately, but there is a ground swell of activity and excitement as collectors learn of the unique insight Puerto Rican revenue stamps offer into the history and economy of the island after it became a U.S. possession in 1898.

He noted that although Puerto Rico used overprinted BEP-produced revenue stamps, all the tax revenue collected was kept on the island. Puerto Rico taxed a wide variety of goods including documents, coffee, salt, narcotics, matches, gasoline, chewing tobacco, cigars, and cigarettes. They also collected tax on tobacco products and spirits sold on the mainland. The era of revenue stamps on Puerto Rico ended in the 1970s with one exception: “colegio” stamps. To this day, Puerto Rico collects taxes on professional services such as legal advice, veterinary care, and plumbing, with the revenue collected supporting educational institutions that teach those professions.

For those interested in pursuing this line of collecting, Kean called attention to the *Catalogue of Puerto Rico Revenues: U.S. Administration, Sept. 1898-Present* by Gregg Greenwald.

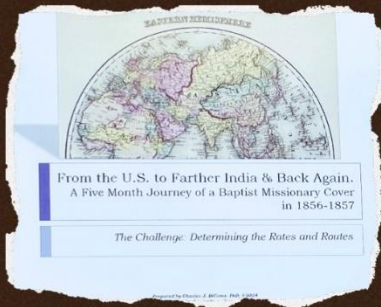
Dr. Charles J. DiComo then presented “From the U.S. to Father India & Back Again: A Five-Month Journey of a Baptist Missionary Cover in 1856-1857.” Charlie provided a riveting account of how he unraveled the postal journey and personal history behind a cover with more than 20 cancellation and manuscript markings. He described the philatelic and genealogical references he used, as well as digital manipulation tools such as Photoshop and retroReveal.org (what is now postmark-reveal.com).

The cover - initially with 90-cents of postage of which only 6-cents remained when Charlie acquired it - was sent from Ohio to a missionary named Reverend Alfred Brown Satterlee who, together with his pregnant wife Sally, had recently arrived in what is today Myanmar. Satterlee sadly passed away before the letter arrived, so it was returned to the United States. Sally and her newborn daughter also sailed back to the United States. Sally died on board ship, but her daughter, Emily, survived and lived to the ripe old age of 88.

Charlie figured out that the cover initially included 84-cents of postage in the form of seven 12-cent stamps from the Series of 1851. By researching auction catalogs, Charlie tracked down a block of six that had been removed from the cover. The block clearly came from the cover because the postmarks matched up exactly. Charlie is still on the lookout for the seventh 12-cent stamp to complete the cover’s reconstruction.

Seven of the attendees then adjourned to the Iron Hill Brewery for lunch and discussion.

To learn more about the Philatelic Gathering, visit our website: <https://lcps-stamps.org/study-groups/>



November 23, 2024



Photos: Mike Wilson



Dr. Charles J. DiComo presented “From the U.S. to Farther India & Back Again: A Five-Month Journey of a Baptist Missionary Cover in 1856-1857.” He provided a riveting account of how he unraveled the postal journey & personal history behind a cover with 20+ cancellation & manuscript markings. He described the philatelic & genealogical references used & digital manipulation tools.



Kean Spencer shared “Puerto Rico Revenue Stamps 1899-Present.” His presentation was based on his exhibit from PURIPEX 2024. This hasn’t been a well-studied area of philately. There is a ground swell of activity & excitement as collectors learn of the unique insight Puerto Rican revenue stamps offer in the history & economy of the island after it became a U.S. possession in 1898.

<https://lcp-stamps.org/study-groups/>

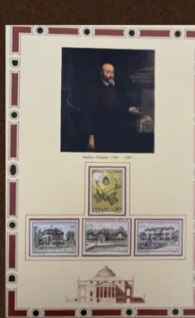
Credit: Dr. Charles J. DiComo

Links to Recent PSLC Presentations

Philatelic Society of Lancaster County (PA) Annual Open House & Exhibition '24





Montage: Dr. C. DiComo





Landis Homes | November 13, 2024


Exhibits from the November Open House

 [Exhibit: Operation Deep Freeze and the International Geophysical Year](#), by Rob Sternberg (2024-11-13 Open House & Exhibition)

 [Exhibit: The Loma Prieta 1989 "World Series" Earthquake Jolted Joe Dimaggio](#), by Rob Sternberg (2024-11-13 Open House & Exhibition)

 [Exhibit: The U.S. Centennial & Beyond](#), by Paul Petersen (2024-11-13 Open House & Exhibition)


 [Exhibit: Foldovers on the Souvenir Sheet for the Sixth International Philatelic Exposition](#), by David Hunt (2024-11-13 Open House & Exhibition)

 [Exhibit: The International Civil Aeronautics Conference \(ICAC\) of December 12-14, 1928](#), by David Weichert (2024-11-13 Open House & Exhibition)

 [Exhibit: The Villa Rotunda, Andrea Palladio, and a Bicycle Trip](#), by Cathy Kotanchik (2024-11-13 Open House & Exhibition)

 [Exhibit: Shifty Business, Color Shifts on U.S. #703 Red Cross Issue](#), by Keith Bloss (2024-11-13 Open House & Exhibition)

<https://lcps-stamps.org/wp-content/uploads/2018/05/DiComo-Analysis-Incoming-NYC-APL-Postmarks-201804.pdf> A 16-page display by Dr. Charles J. DiComo (2024-11-27)

We have a YouTube Channel, where many presentations have been recorded and made available free to all. Visit our PSLC  [YouTube Channel](#) today, enjoy a presentation, LIKE and SUBSCRIBE for future updates. Contact [Dr. Charles J. DiComo](#) with any comments or if you would like to share.

Member Requests and Notices

Members of the PSLC may submit a notice of collecting interests and requests for research at no cost. Please email your requests to the newsletter editor for consideration. We will run your items for a minimum of three months unless otherwise directed.

Research Request: U.S. Private Die Proprietary 'Match & Medicines' Revenues, issued stamps, post-tax labels, facsimiles on original packaging (bottles, boxes, tins), wrappers, product inserts, almanacs, billheads, etc. Looking to see images and also acquire. Contact Dr. Charles J. DiComo at charlesdicomo@gmail.com or +1 (914) 450-3791


Research Request: Terry Hursh is looking for covers from West Overton (1861 – 1902) and Broad Ford (1861 – 1956) in southwestern Pennsylvania. West Overton Post Office was located in Westmoreland County, and Broad Ford was located in Fayette County. Terry is also searching for material related to the [Overholt Distillery](#) or [Henry Clay Frick Coal Mines](#). Anything that you can share about these places in the past might be of great interest to Terry. Please contact him at revhursh@gmail.com.

Research Request: Material of ANY kind pertaining to well-known stamp and First Day Cover dealer Elmer R. Long. Rick is putting together a presentation and talk for 2025 and is trying to

complete a set of Mr. Long's little "Collector's Handbooks" which came out at least annually from 1935 to 1964. If you have any of those, or any correspondence or interesting paper material relating to Elmer Long, please contact Rick at rickbarrettmail@comcast.net anytime. If you ever met or did business with Mr. Long, he'd love to hear from you as well.

Research Request: Looking for the following DC-4 Skymaster plate blocks: C32 – 23493 LL&LR, 23494 LR, 23523 UL &LR; C33 – 23590 UL. Please contact Tom Nichols at tnicholspa@gmail.com.

LOOKING TO ACQUIRE:
Pawling, Patterson & surrounding Post Office's
in Dutchess & Putnam Counties, New York State.



Interested in Stampless, Classic, Modern Postal History; Postcards; Bank Checks; Advertisements; Victorian Trading Cards; Bank Tags; Currency, Ephemera; etc.

Also looking for additional hamlets, towns, villages: Pauling(s), Pawling(s)ville, Campbell(s)ville, Pawlings, Pawling, North Quaker Hill, Quaker Hill, Farmer's Hill, Stonehouse, West Pawling, Holmes, Haviland Hollow, West Patterson, Wingdale, Wing's Station.

Scans appreciated, fair offers made, contact
Dr. Charles J. DiComo | charlesdico@gmail.com

PSLC Officers

| | | |
|--|---|--|
| President Dr. Charles J. DiComo 914-450-3791 charlesdico@gmail.com | First Vice President John Hostetter 717-285-2484 jhostetterjr@gmail.com | Second Vice President Bill Greiner III 717-471-2354 sunfighter@verizon.net |
| Secretary David Weichert 717-342-3120 stampsbydave@gmail.com | Treasurer Lou DiFelice 717-572-3419 loudifelice@gmail.com | Publicity Len Kasper 717-723-1864 hotrodparts33@aol.com |
| Membership Chair Wayne Heim 717-725-7192 heimwayne@gmail.com | Program Manager Paul Petersen 717-299-5640 pcpetersen@comcast.net | Website Coordinator Dr. Charles J DiComo 914-450-3791 charlesdico@gmail.com |
| Newsletter Editor Scott Ney 717-383-1736 stnst2@aol.com | APS Rep Paul Petersen 717-299-5640 pcpetersen@comcast.net | ATA Rep Paul Petersen 717-299-5640 pcpetersen@comcast.net |

General Information

Visitors are Always Welcome!

PSLC dues are \$10.00 a year. For existing members who want to renew their membership for 1 or more years, and/or make a donation to support our Society activities and programs, you can use PayPal-Friends by remitting payment to President Charles J. DiComo, PhD at charlesdicomo@gmail.com and denote in Notes section the reason for payment, your name, and how many years you are paying. Venmo can also be used @charlesdicomo. For new members, please mail/email your [Membership Application](#) along with a check or money order to Treasurer, Lou DiFelice.

We meet in-person on the 2nd Wednesday of the month (Except August & December) at 6:30 p.m. in the Crossings Meeting Room, Landis Homes, 1001 East Oregon Road, Lititz, PA 17542. See our website for directions.

We meet virtually on the 4th Wednesday at 6:15 p.m. For society information and meeting links, contact Paul Petersen (pcpetersen@comcast.net).

Visit us on YouTube: <https://youtube.com/@philatelicsocietyoflancast7393>

Visit us on Facebook: <https://www.facebook.com/philatelicsocietylancastercounty>

Our mailing address is: PO Box 6053, Lancaster, PA 17607



The PSLC is honored to be selected as a winner of the 2024 APS Star Route Awards for our website and newsletter. The Society website (lcps-stamps.org), our 24 – 7 virtual presence where philatelists all over the world can access our resources, is the winner of a Large Gold award. Our monthly [newsletter](#), which exists to inform you of upcoming Society events and give you a creative outlet to provide interesting philatelic content, is the winner of a Large Vermeil award.

The PSLC is collecting dues for 2025

Dues remain at \$10 for yet another year. That is less than 84 cents per month. Where can you find a better deal?

Please submit your dues at your earliest convenience, to help us avoid unnecessary follow-up. If for some reason you decide not to renew your membership, which we sincerely hope would not be the case, please make us aware of that.

There are multiple ways you can submit your renewal payment:

1. You may renew **IN PERSON**: Submit a **check** (no cash) in the amount of **\$10 payable to PSLC** to Wayne Heim at the membership table when attending our monthly, in-person meeting. Meetings are held on the second Wednesday of the month at Landis Homes, 6:30 pm.
2. You may renew **BY MAIL**: **Print and complete the attached form and submit it**, with your **check** to Lou DiFelice, 1024 Woodridge Blvd., Lancaster, PA 17601-2251.
3. You may renew **WITH PAYPAL** (Family and Friends): Directions for paying online can be found on the **Philatelic Society of Lancaster County Web site, Page 1**. Payment, along with any changes to your renewal (address, phone, email, etc.) should be sent to charlesdicomo@gmail.com.

Thank you in advance for your prompt response to this request, as we look forward to twelve more months of interesting, entertaining, mind expanding philatelic presentations. If you have any questions, please contact membership chair Wayne Heim at heimwayne@gmail.com

Please **clip** this **2025 Dues Renewal Application**, complete, and **mail to Lou DiFelice, 1024 Woodridge Blvd, Lancaster, PA, 17601-2251** with **\$10.00, Checks only, no cash**. Be sure to sign your check. Thank you in advance.

Name: _____

Phone: _____

Email Address: _____

Please check here if you do not require a new membership card. This action will save the club time and the cost of postage.

Please check the appropriate ATA/APS box(s) if you are a paid up member:

ATA Member APS Member

Make checks payable to Philatelic Society of Lancaster County. Please advise of any changes in address, phone/cell, email, or change in ATA/APS status.