

PRIVATE DIE PROPRIETARY  
MATCH STAMPS

To help pay for the Civil War, the U. S. Congress passed the Tax Laws of 1862, which included new revenue via taxes on matches, patent medicines, playing cards, perfumes and canned fruit.



1870  
AKRON MATCH CO.  
AKRON, OH  
1C BLUE



1882  
J.J. ALLEN'S SONS  
PHILADELPHIA, PA  
1C BLUE



1864  
ALEXANDER'S MATCHES  
BALTIMORE, MD  
1C ORANGE

1875  
ALEXANDER'S MATCHES  
BALTIMORE, MD  
1C BLUE



1876  
J.W. EISENHART'S MATCHES  
BALTIMORE, MD  
1C BLUE



1866  
ORONO MATCH CO.  
ORONO, ME  
1C BLUE

1876  
ALLEN & POWERS  
ORONO, ME  
1C BLUE



1868  
AETNA MATCH  
ZISEMANN, GRIESHEIM  
& CO., ST. LOUIS, MO  
1C GREEN

1868  
AETNA MATCH  
ZISEMANN, GRIESHEIM  
& CO., ST. LOUIS, MO  
1C BLUE

1875  
AETNA MATCH  
F. MANSFIELD & CO.  
ST. LOUIS, MO  
1C BLUE

1876  
ALLIGATOR MATCH CO.  
ST. LOUIS, MO  
1C BLUE

1880  
ALLIGATOR MATCH CO.  
ST. LOUIS, MO  
1C BLUE, ROULETTED



PRIVATE DIE PROPRIETARY  
MATCH STAMPS



1865  
THOMAS ALLEN  
ST. LOUIS, MO  
1G GREEN



1869  
AMERICAN MATCH CO.  
CLEVELAND, OH  
1G BLACK



1866  
AMERICAN MATCH CO.  
ROCK ISLAND, IL  
3G GREEN



1867  
AMERICAN MATCH CO.  
AMSTERDAM, NY  
1G BLACK



1874  
AMERICAN FUSEE CO.  
ERIE, PA  
1G BLACK



1869  
AMERICAN MATCH CO.  
CLEVELAND, OH  
3G BLACK



1871  
PARAGON MATCH  
BOCK, SCHNEIDER & CO.  
NEW YORK, NY  
1G BLACK



1872  
PARAGON MATCH  
ARNOLD & CO.  
NEW YORK, NY  
1G BLACK



1864  
GEORGE & O.C. BARBER  
MATCH COMPANY  
MIDDLEBURY, OH  
1G BLUE



1867  
BARBER MATCH CO.  
MIDDLEBURY, OH  
1G BLUE



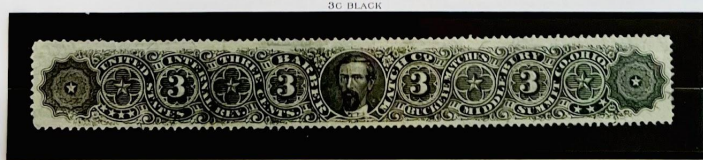
1867  
BARBER MATCH CO.  
MIDDLEBURY, OH  
1G BLUE, ROULETTE



1868  
BARBER & PECKHAM  
MIDDLEBURY, OH  
1G BLUE



1865  
BARBER & PECKHAM, MIDDLEBURY, OH  
3G BLACK



1867  
BARBER MATCH CO., MIDDLEBURY, OH  
3G BLACK





PRIVATE DIE PROPRIETARY  
MATCH STAMPS



1866  
E.R. TYLER  
RAG HOLLOW, CT  
1C GREEN

1875  
IVES & JUDD  
RAG HOLLOW, CT  
1C GREEN

1878  
BAGLEY & DUNHAM  
RAG HOLLOW, CT  
1C GREEN

1880  
BOWERS & DUNHAM  
RAG HOLLOW, CT  
1C GREEN

1880  
BOWERS & DUNHAM  
RAG HOLLOW, CT  
1C BLUE



1868  
BAUER & BEUDEL  
NEW YORK, NY  
1C BLUE

1871  
NEW YORK MATCH CO.  
NEW YORK, NY  
1C BLUE

1878  
EMPIRE MATCH  
B. BENDEL & CO.  
SAN FRANCISCO, CA  
1C BROWN

1880  
EMPIRE MATCH  
H. BENDEL  
SAN FRANCISCO, CA  
1C BROWN



1874  
EMPIRE MATCH  
B. BENDEL & CO.  
SAN FRANCISCO, CA  
12C BROWN

1877  
EMPIRE MATCH  
H. BENDEL  
SAN FRANCISCO, CA  
12C BROWN



PRIVATE DIE PROPRIETARY  
MATCH STAMPS



1865 1879  
A. BEECHER & SONS WESTVILLE, CT 1C ORANGE  
SWIFT & COURTNEY & BEECHER WESTVILLE, CT 1C BLACK



1866 BENTZ & LEA NEW YORK, NY 1C BLUE



1864 1870 1870 1877 1878 1867 1868  
H. & M. BENTZ NEW YORK, NY 1C BLUE  
BENT & LEA EUREKA PARLOR MATCH NEW YORK, NY 1C BLACK  
WM. BOND & CO. ANCHOR MATCH PORTLAND, OR 4C BLACK  
WM. BOND & CO. ANCHOR MATCH PORTLAND, OR 4C GREEN  
BOUSFIELD & POOLE CLEVELAND, OH 1C LILAC  
BOUSFIELD & POOLE CLEVELAND, OH 1C BLACK



1867  
BOUSFIELD & POOLE, CLEVELAND, OH 3C LILAC



1868  
BOUSFIELD & POOLE, CLEVELAND, OH 3C BLACK



1868



PRIVATE DIE PROPRIETARY  
MATCH STAMPS

©2017 WWW.MATCHANDMEDICINE.COM



1864  
GREENLEAF & COMPANY  
MILWAUKEE, WI  
3C CARMINE



1864  
GREENLEAF & COMPANY  
MILWAUKEE, WI  
1C GREEN



1873  
BARBER, JONES & Co.  
MILWAUKEE, WI  
1C GREEN



1875  
KIRBY & SONS  
MILWAUKEE, WI  
1C GREEN



1864  
GREENLEAF & COMPANY  
MILWAUKEE, WI  
5C ORANGE



1870  
FRANK E. CLARK  
WOODBRIDGE, CT  
1C LAKE



1872  
BROCKETT & NEWTON  
WOODBRIDGE, CT  
1C LAKE, DIE 1



1872  
BROCKETT & NEWTON  
WOODBRIDGE, CT  
1C LAKE, DIE 2



1876  
CLARK MATCH CO.  
WOODBRIDGE, CT  
1C LAKE



1877  
F.P. NEWTON  
WOODBRIDGE, CT  
1C LAKE



1865  
BROWN & DURLING  
WADSWORTH, OH  
1C BLACK



1865  
BROWN & DURLING  
WADSWORTH, OH  
1C GREEN



1866  
BYAM, CARLTON & Co.  
BOSTON, MA  
1C BLACK



1871  
D. BIRHANS & Co.  
BURLINGTON, IA  
1C BLACK



1873  
BOUTELL & MAYNARD  
MINNESOTA  
1C BLACK



1880  
CHARLES BUSCH  
NEW YORK, NY  
1C BLACK



1869  
W.D. GURTI  
OSHKOSH, WI  
1C GREEN



1877  
CANNON MATCH CO.  
STILLWATER, MN  
1C GREEN



1869

PRIVATE DIE PROPRIETARY  
MATCH STAMPS



1870  
L.W. BUCK & CO.  
CLINTON, IA  
1C BLACK



1880  
CARDINAL MATCH CO.  
ST. LOUIS, MO  
1C LAKE



1865  
CHICAGO MATCH CO.  
CHICAGO, IL  
3C BLACK



1873  
CROWN MATCH CO.  
GLENBEULAH, WI  
1C BLACK



1866  
W.E. DOOLITTLE  
HAYESVILLE, OH  
1C BLUE



1877  
PERCUSSION MATCH CO.  
HENRY A. CLARK  
CHICAGO, IL  
1C GREEN



1877  
PERCUSSION MATCH CO.  
CHARLES S. HALE  
CHICAGO, IL  
1C GREEN



1881  
E. P. DUNHAM  
WEST CHESHIRE, CT  
1C GREEN



1867



1867



1867

JAMES L. CLARK  
OSHKOSH, WI  
1C GREEN



1867

JAMES L. CLARK  
OSHKOSH, WI  
1C GREEN, ROULETTED



1865

PARK CITY MATCH CO.  
KENOSHA, WI  
1C GREEN



1865

PARK CITY MATCH CO.  
KENOSHA, WI  
3C ORANGE



1865

PARK CITY MATCH CO.  
KENOSHA, WI  
1C GREEN



1866



1866



1866

EXCELSIOR MATCH CO.  
GRAMER & KEMP  
NEW YORK, NY  
1C BLACK



1869

EXCELSIOR MATCH CO.  
GRAMER & KEMP  
NEW YORK, NY  
1C BLUE



1875

EXCELSIOR MATCH CO.  
JOHN LOEHR  
NEW YORK, NY  
1C BLUE



1876

EXCELSIOR MATCH CO.  
JOSEPH LOEHR  
NEW YORK, NY  
1C BLUE



1876

EXCELSIOR MATCH CO.  
JOSEPH LOEHR  
NEW YORK, NY  
1C BLUE



1876

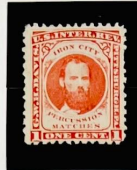
EXCELSIOR MATCH CO.  
JOSEPH LOEHR  
NEW YORK, NY  
1C BLUE



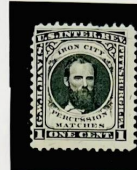
PRIVATE DIE PROPRIETARY  
MATCH STAMPS



1864  
IRON CITY MATCH CO.  
GRIGGS & SCOTT  
PITTSBURGH, PA  
1C BLACK



1875  
IRON CITY MATCH CO.  
G.W.H. DAVIS  
PITTSBURGH, PA  
1C GARMINE



1875  
IRON CITY MATCH CO.  
G.W.H. DAVIS  
PITTSBURGH, PA  
1C BLACK



1866  
JAMES EATON  
UTICA, NY  
1C BLACK



1866  
JAMES EATON  
UTICA, NY  
1C BLACK, ROULETTE



1866  
JAMES EATON  
UTICA, NY  
1C BLACK, ROULETTE



1865  
AUGUST EICHELE  
ST. LOUIS, MO  
1C BLACK



1866  
P. EICHELE & CO.  
ST. LOUIS, MO  
1C BLUE



1876  
EICHELE & CO.  
ST. LOUIS, MO  
1C BLUE



1876  
EICHELE & CO.  
ST. LOUIS, MO  
1C BLUE, ROULETTE



1880  
E. B. EDDY  
ODGENSBURG, NY  
1C GARMINE, DIE I



1880  
E. B. EDDY  
ODGENSBURG, NY  
1C GARMINE, DIE II



1872  
EXCELSIOR MATCH CO.  
WATERTOWN, NY  
1C BLACK



1875  
EXCELSIOR MATCH CO.  
SYRACUSE, NY  
1C BLACK



1876  
L. FRANK  
LOUISIANA MATCH CO.  
NEW ORLEANS, LA  
1C BROWN



1867  
EXCELSIOR MATCH CO.  
BALTIMORE, MD  
1C BLUE



1872  
MARYLAND MATCH CO.  
BALTIMORE, MD  
1C BLUE



1872  
MARYLAND MATCH CO.  
BALTIMORE, MD  
1C BLUE



1865  
G. FARR & CO.  
BOSTON, MA  
1C BLACK



1874  
JAMES G. HOGGESS  
MATCH CO.  
WEST HAVEN, CT  
1C GREEN



1874  
JAMES G. HOGGESS  
MATCH CO.  
WEST HAVEN, CT  
1C GREEN



1877  
GARDNER, BEER & CO.  
CHICAGO, IL  
1C BLACK



1874  
JAMES G. HOGGESS  
MATCH CO.  
WEST HAVEN, CT  
1C GREEN



1872  
MARYLAND MATCH CO.  
BALTIMORE, MD  
1C BLUE

PRIVATE DIE PROPRIETARY  
MATCH STAMPS



1864-1



1864-2



1864-1

1864  
WILLIAM GATES  
FRANKFORT, NY  
1C BLACK, DIE 1



1864-2

1864  
WILLIAM GATES  
FRANKFORT, NY  
1C BLACK, DIE 2



1864-1

1864  
WILLIAM GATES' SONS  
FRANKFORT, NY  
1C BLACK



1864-1

1864  
WILLIAM GATES' SONS  
FRANKFORT, NY  
1C BLACK, ROULETTED



1864-1



1864-2



1865-1  
NO. 14 TWQ 318  
4479



1865-1  
WILLIAM GATES  
FRANKFORT, NY  
3C BLACK



1864-1  
WILLIAM GATES  
FRANKFORT, NY  
6C BLACK



1865-2  
NO. 15 TWQ 318  
4479



1876-1  
WILLIAM GATES  
FRANKFORT, NY  
3C BLACK



1877-1  
WILLIAM GATES' SONS  
FRANKFORT, NY  
3C BLACK



PRIVATE DIE PROPRIETARY  
MATCH STAMPS



1874  
A. GOLDBACK & CO.  
RICHMOND, VA  
1C GREEN



1875  
A. GOLDBACK  
RICHMOND, VA  
1C GREEN



1865  
THOS. GORMAN & BRO.  
WESTVILLE, CT  
1C BLACK



1865  
THOS. GORMAN & BRO.  
WESTVILLE, CT  
1C GREEN



1876  
THOS. GORMAN  
WESTVILLE, CT  
1C GREEN



1870  
L. G. HUNT  
GARDEN CITY MATCH  
CHICAGO, IL  
1C BLACK



1873  
GRIGGS & GOODWILL  
GARDEN CITY MATCH  
CHICAGO, IL  
1C BLACK



1875  
GRIGGS & GOODWILL  
GARDEN CITY MATCH  
CHICAGO, IL  
1C GREEN W OVERPRINT



1873  
HENNING AND BOHACK  
HUDSON CITY, NJ  
1C BLUE



1880  
W.E. HENRY & CO.  
KEYSTONE MATCH  
STROUSBURG, PA  
1C ORANGE



1880  
W.E. HENRY & CO.  
KEYSTONE MATCH  
STROUSBURG, PA  
1C BLACK



1864  
B. & H.D. HOWARD  
NEW YORK, NY  
1C RED



1864  
B. & H.D. HOWARD  
NEW YORK, NY  
1C BLUE



1869  
NEW YORK MATCH CO.  
NEW YORK, NY  
1C VERMILLION



PRIVATE DIE PROPRIETARY  
MATCH STAMPS



1865  
IVES MATCHES  
WALLINGFORD, CT  
8C BLUE



82104



82104



82104

1865  
IVES MATCHES  
WALLINGFORD, CT  
1C BLUE



83187

1876  
P.T. IVES  
WALLINGFORD, CT  
1C BLUE



117

1876  
P.T. IVES  
WALLINGFORD, CT  
1C BLUE, ROULETTED



82104



82104



1881  
D.F. HUTCHINSON, JR.  
SOMERVILLE, MA  
1C LAKE



1881  
JOHN J. MACKLIN & CO.  
COVINGTON, KY  
1C BLACK



1882  
IVES & JUDD  
WEST CHESHIRE, CT  
1C GREEN



80120



82104



1865  
W.S. KYLE  
BOSTON, MA  
1C BLACK



82104

1875  
A. MESSINGER  
BOSTON, MA  
1C BLACK



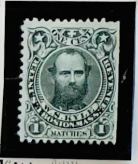
2011

1867  
LACOUR'S MATCHES  
NEW YORK, NY  
1C BLACK

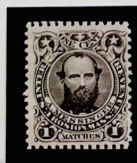


80120

1867  
LEEDS, ROBINSON & CO.  
BOSTON, MA  
1C GREEN



82104



82104



82104



2011



80120



PRIVATE DIE PROPRIETARY  
MATCH STAMPS



1864



1864



1864

1864  
UNIVERSAL SAFETY MATCH CO.  
BOSTON, MA  
1C BLACK



1870

1870  
LEIGH & PALMER  
TRENTON, NJ  
1C BLACK



1881

1881  
H. LEIGH  
TRENTON, NJ  
1C BLUE



1881



1881



1864



1864



1864

1864  
MATCHES  
VARIOUS COMPANIES  
1C BLUE



1875

1875  
E. K. SMITH  
PHILADELPHIA, PA  
1C BLUE



1875

1875  
E. K. SMITH  
PHILADELPHIA, PA  
1C BLUE, ROULETTED



1875



1875



1879



1879

1879  
NATIONAL MATCH CO.  
NEW YORK, NY  
1C BLUE



1881

1881  
PENN MATCH CO. LTD  
PHILADELPHIA, PA  
1C BLUE



1867

1867  
PIERCE MATCH CO.  
CHICAGO, IL  
1C GREEN



1864

1864  
V.R. POWELL  
TROY, NY  
1C BLUE



1865

1865  
PORTLAND MATCH CO.  
PORTLAND, ME  
1C BLACK



1865



1880

1880  
READING MATCH CO.  
READING, PA  
1C BLACK



1872

1872  
NEWBAUER & CO.  
SAN FRANCISCO, CA  
4C GREEN



1878

1878  
REED & THOMPSON  
BOSTON, MA  
1C BLACK



1878



1875

PRIVATE DIE PROPRIETARY  
MATCH STAMPS



1869  
NEW YORK MATCH CO.  
NEW YORK, NY  
1C GREEN



1864  
D.M. RICHARDSON CO.  
DETROIT, MI  
1C RED



1865  
D.M. RICHARDSON CO.  
DETROIT, MI  
1C BLACK



1875  
RICHARDSON MATCH CO.  
DETROIT, MI  
1C BLACK



1872  
NEW YORK MATCH CO.  
NEW YORK, NY  
5C BLUE



1864  
D.M. RICHARDSON CO.  
DETROIT, MI  
3C VERMILION



1865  
D.M. RICHARDSON CO.  
DETROIT, MI  
3C BLUE



1875  
RICHARDSON MATCH CO.  
DETROIT, MI  
3C BLUE



1866  
H. & W. ROEBBER  
UNION MATCH CO.  
NEW YORK, NY  
1C BLUE



1875  
WILLIAM ROEBBER  
UNION MATCH CO.  
NEW YORK, NY  
1C BLUE



1875  
WILLIAM ROEBBER  
UNION MATCH CO.  
NEW YORK, NY  
1C BLUE, ROULETTED



1867  
E.T. RUSSELL  
BURRAGEVILLE, MA  
1C BLACK



1872  
SCHMITT & SCHMITTDIEHL  
DETROIT, MI  
1C VERMILION



1872  
SCHMITT & SCHMITTDIEHL  
DETROIT, MI  
3C BLUE



1875  
SAN FRANCISCO MATCH CO.  
SAN FRANCISCO, CA  
12C BLUE





PRIVATE DIE PROPRIETARY  
MATCH STAMPS



1881  
RYDER, CROUSE & WELCH CO.  
SYRACUSE, NY  
1C LAKE



1881  
RYDER, CROUSE & WELCH CO.  
SYRACUSE, NY  
1C LAKE



1881  
TRENTON MATCH CO.  
TRENTON, NJ  
1C BLUE



1869  
WISE AND CO.  
NEW YORK, NY  
1C BLACK



1867  
THE STAR MATCH CORP.  
PORTLAND, ME  
1C BLACK



1882



1882



1882



1882

1882  
THE STANDARD MATCH CO.  
NEW YORK, NY  
1C BLACK



1866

1866  
HENRY STANTON CO.  
SYRACUSE, NY  
1C BLACK



1867

1867  
THE STAR MATCH CORP.  
PORTLAND, ME  
1C BLACK



1875

1875  
WASHINGTON MATCH CO.  
WASHINGTON, CT  
1C BLACK



1875



1875



1864



1864

1864  
SWIFT & COURTNEY  
WILMINGTON, DE  
1C BLUE



1875

1875  
SWIFT, COURTNEY &  
BEECHER CO.  
WILMINGTON, DE  
1C BLUE



1867

1867  
ALEXANDER UNDERWOOD  
AND CO.  
NEWARK, NJ  
1C GREEN



1880

1880  
UNION MATCH CO.  
DETROIT, MI  
1C BLACK



1875

1875  
WASHINGTON MATCH CO.  
WASHINGTON, CT  
1C BLACK



1875



1875



1875



1875



1869



1869

1869  
WILMINGTON PARLOR  
MATCH CO.  
WILMINGTON, DE  
1C BLACK



1876

1876  
F. ZAISS & CO.  
PHILADELPHIA, PA  
1C BLACK



1876



1876

©2017 WWW.MATCHANDSTAMP.COM

PRIVATE DIE PROPRIETARY  
MATCH WRAPPERS



1866  
BYAM, CARLTON & CO.,  
BOSTON, MA  
(42512)



PRIVATE DIE PROPRIETARY  
MATCH WRAPPERS

1866  
BYAM, CARLTON & CO., BOSTON, MA



10-11-66  
(4400-2-1175)





PRIVATE DIE PROPRIETARY  
MATCH WRAPPERS

1866  
BYAM, CARLTON & CO., BOSTON, MA 1C BLACK  
R055



1866  
BYAM, CARLTON & CO., BOSTON, MA 1C BLACK  
R055

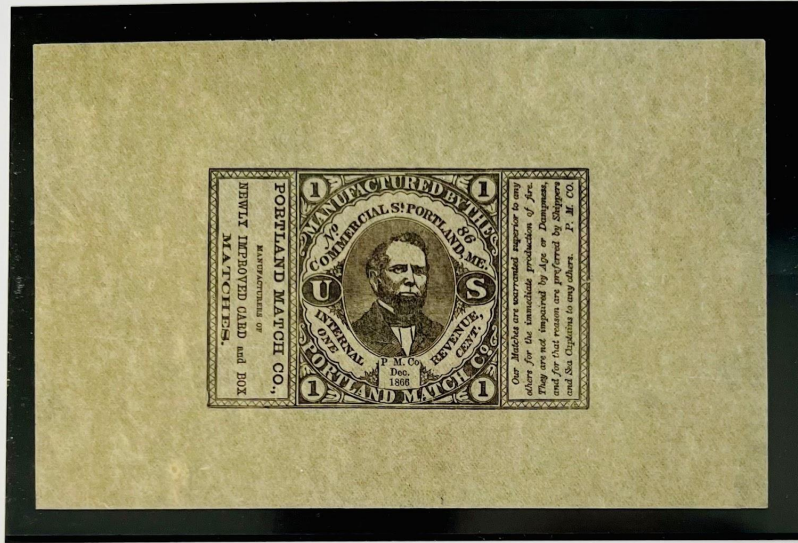
PRIVATE DIE PROPRIETARY  
MATCH STAMPS



R56a May 1890.



PRIVATE DIE PROPRIETARY  
MATCH WRAPPERS

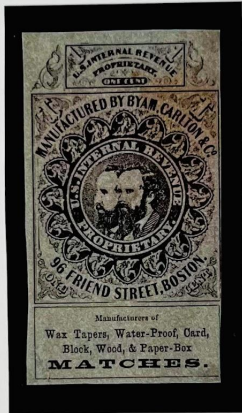


1866  
PORTLAND MATCH CO., PORTLAND, ME  
1G BLACK



1864  
V.R. POWELL  
WADSWORTH, OH  
1G BLACK

PRIVATE DIE PROPRIETARY  
MATCH WRAPPERS



1864  
BYAM, CARLTON & Co.  
BOSTON, MA