



An Unlisted Major Double Transfer on The Trenton Match Co.'s U.S. Private Die Proprietary 1¢ Revenue Stamp RO176d

A Brief History & Examination

©2023 | Charles J. DiComo, PhD
charlesdicomo@gmail.com

The Trenton Match Co., Trenton, NJ

- ▶ George O. Seward was listed in the 1869 *Trenton Directory* as match maker, foreman, superintendent of a match factory in Chambersburg, the 9th, 10th, 11th & 12th Wards of Trenton, located at 118 Hamilton Avenue near the canal. (●)
- ▶ The manufacturing capacity was 300 gross of matches per day; with eighty-five hands employed during the busy season; and principal shipments to the south.
- ▶ Then, the 1882–1885 Directories listed the Trenton Match Co. with George F. Wilson, proprietor and Geo. O. Seward, manager at same Chambersburg address.
- ▶ It was during this era that a single private die proprietary revenue stamp was issued.



THE WORKS OF THE TRENTON MATCH COMPANY.—The factory of the Trenton Match Company is located on Hamilton Avenue, and was put in operation in 1880. The proprietor is George F. Wilson; George O. Seward is manager. The manufacturing capacity of the works is three hundred gross of matches per day. During the busy season eighty-five hands are employed. The principal shipments are to the South.

History of Burlington & Mercer Counties, NJ. Maj. E.M. Woodward & J.F. Hageman, Phila., 1883, pg. 751.

Their Private Die Revenue #RO176d



- ▶ RO176d: 1¢ Deep Blue, central image of the Coat of Arms of New Jersey, produced by BEP, Apr. 1881 – Feb. 1883.
- ▶ 7,770,000 printed, all on watermarked paper, 210 stamps per sheet (15x14).
- ▶ Not known used in multiples, but pairs and blocks of varying size remain.

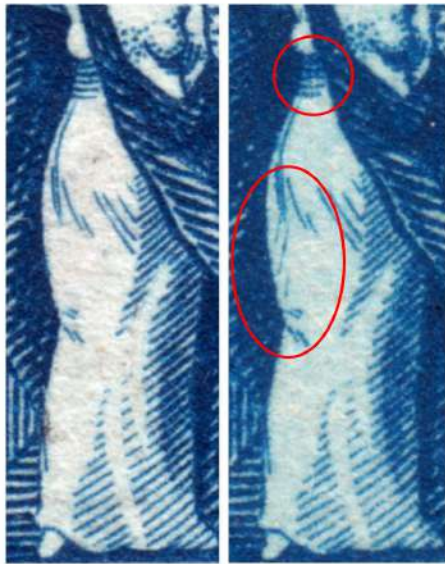
- Stamps used on cylindrical wooden boxes 1.5"D x 2.75"H containing 60 or 70 matches with fine sand in base as a rough striker.
- Stamp adhered near top across seam of cover and base, so it was torn when opened; hence these stamps were not canceled.

#RO176dt: Unlisted Major Double Transfer

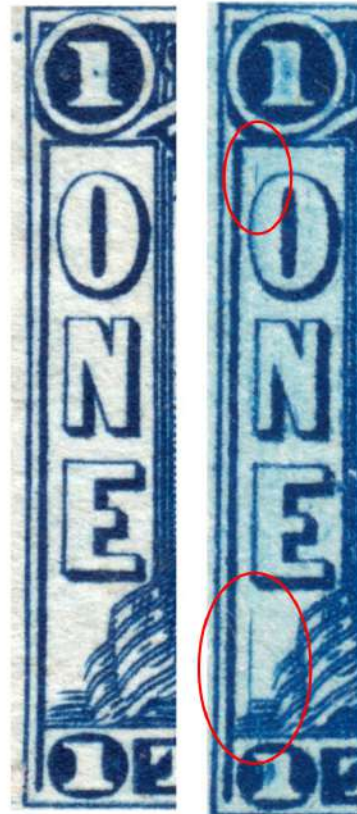


- #RO176dt: unlisted major double transfer showing a 2.0 mm shift to the right across entire design. Most prominent features: left inner frame line; lower left numeral "1"; lower "TRENTON"; left figure "Liberty" drapery; the Horse head; right figure "Ceres" lower dress; and the three manual Hand Plows.

Greatly Enlarged Details



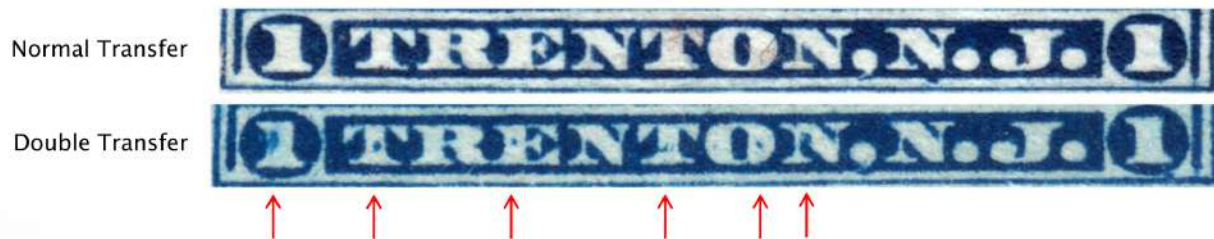
Normal Transfer Double Transfer in Ceres dress from shaded area to the left



Greatly Enlarged Details



Normal Transfer Double Transfer of Mane & Scroll work



Greatly Enlarged Details



Normal Transfer



Double Transfer of three Hand Plows and Liberty drapery at left

A Second Confirmatory Example Exhibiting the same Double Transfer features



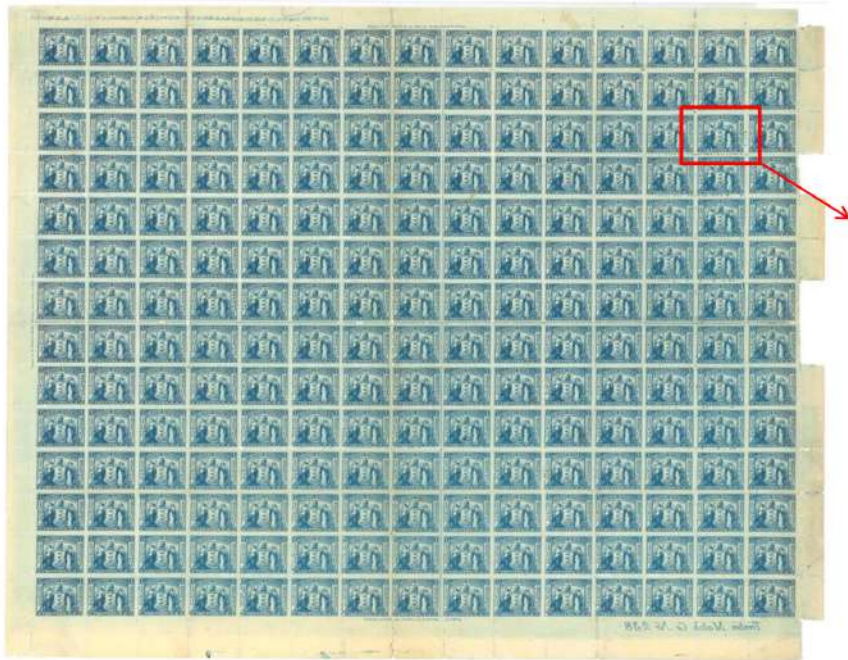
Block of 12 containing the same major double transfer, position unknown on pane.



Second confirmatory example exhibiting the same double transfer features.

❖ This example has been reprinted with the permission of Keith Thompson.

A Full Pane Confirms Major DT is Position 44



Major Double Transfer located at Position 44 on Plate No. 238, pane of 210 (15 x 14), Printed by B.E.P.

N.B. No other double transfers have been identified on the pane, besides position 44.

♦ The Trenton Match Co. pane of 210, Plate No. 238 has been reprinted with the permission of Eric Jackson.



Conclusion



- ▶ The Trenton Match Co. manufactured matches at their Hamilton Avenue Match factory near the canal in Trenton, New Jersey from the late-1860s to the mid-1880's.
 - They utilized the private die proprietary stamp #RO176d from 1881 through 1883 for use on their cylindrical 60-70 match wooden boxes to meet the Revenue Act of 1862, taxing matches.
- ▶ An unlisted, major double transfer has been discovered, is fully described within this presentation, and additional confirmatory stamps with the identical DT features has been identified.
- ▶ A full pane of 210, Plate No. 238, confirms DT at position 44.
- ▶ Next steps:
 - Have this new discovery certified by the PF.
 - Submit the PF and this presentation to the Editor-in-Chief of *Scott Specialized Catalogue*.
 - New variety should be denoted as RO176dt.

SCOTT
SPECIALIZED
CATALOGUE OF UNITED STATES STAMPS & COVERS



Trenton Match Co. — RO176

Trenton Match Co.

RO176 1c blue
of Wmk 191R
As "d," dbl. transfer

12.00

Suggested addition →