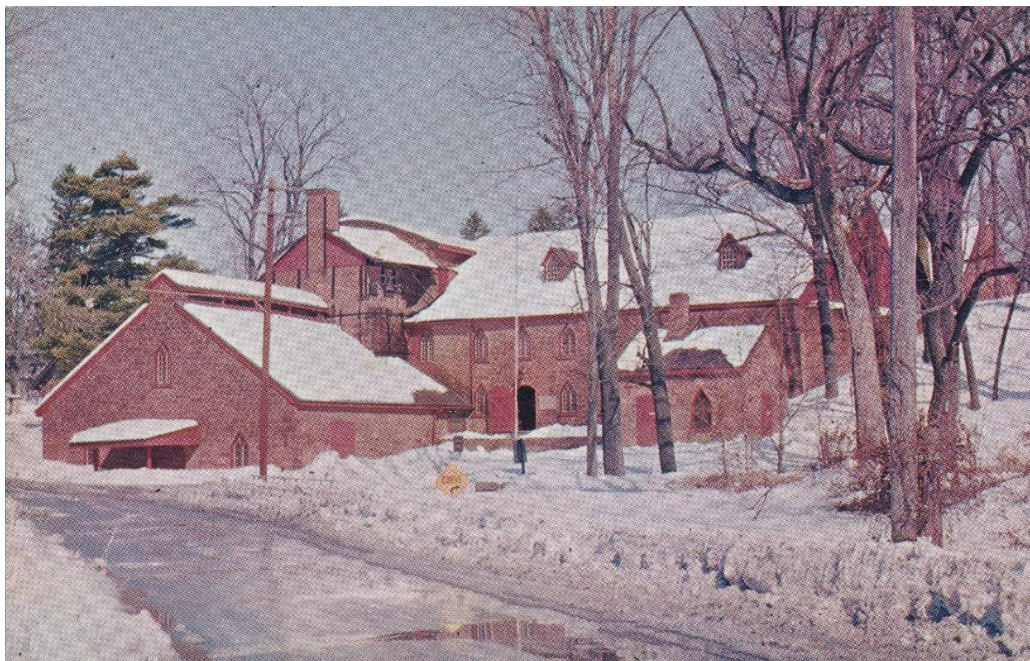


THE PATENT

Monthly newsletter of the Lebanon Stamp Collectors Club

December 2023

Number 53



The December meeting of the Lebanon Stamp Collectors Club will be held on Tuesday, December 19, 2023, at 6:30 p.m. We'll be meeting up at the Rotunda Restaurant and Brewery, in Annville (17003) at 245 W Main St. The Rotunda, formerly known as the Batdorf Restaurant, is a public establishment that is open until 9:00 p.m. on Tuesday evening, so you may arrive at your own leisure. If you'd like to be part of the club's reservation (recommended), please contact Don Smith (donsmith1022@gmail.com) by Monday evening (12/18/23).

The November meeting of the Lebanon Stamp Collectors Club

Scott Ney's presentation at the November meeting also marked the centennial of the high-water mark of the post-WWI hyperinflation of Germany in November, 1923. The stamps that document the post-WWI inflation era in the Weimar Republic of Germany are very common, and thus are an affordable and fascinating way of learning about this period of world economic history.

This philatelic presentation detoured into related areas such as German inflation banknotes, and even German cinema of the time. If you missed it, you can catch a recording of the

presentation, delivered to the Philatelic Society of Lancaster County the following evening, at <https://www.youtube.com/watch?v=ipOCrkHwv9A>



Calendar of Events

2024 Lebanon Stamp Collectors Club Meetings

Below are the dates for next year's stamp club meetings. Please consider volunteering to put on a program for the club. Submissions for the newsletter are always welcomed, all year round!

Date	Presenter and Subject
January 16, 2024	
February 20, 2024	
March 19, 2024	
April 16, 2024	
May 21, 2024	
June 18, 2024	
July 16, 2024	
August 20, 2024	
September 17, 2024	
October 15, 2024	
November 19, 2024	
December 17, 2024	Annual Club Dinner, Location TBD

The PSLC Events Calendar is located at the following link:

[Philatelic Society of Lancaster County – Award-winning, non-profit community organization dedicated to promoting stamp and postal history collecting as a hobby for education and fun. \(lcps-stamps.org\)](https://www.lcps-stamps.org)

The Lebanon Stamp Collectors Club thanks the Philatelic Society of Lancaster County for hosting our affiliate page, which is accessible by clicking the following link:

[The Lebanon Stamp Collectors Club – Philatelic Society of Lancaster County \(lpcs-stamps.org\)](http://The Lebanon Stamp Collectors Club – Philatelic Society of Lancaster County (lpcs-stamps.org))

2024 Lebanon Stamp Collectors Club dues are now payable

Dues are once again \$10, and will provide necessary revenue to pay our room rental fees at the Lebanon Community Library, which is an incredible value at \$15 per month. Please submit your dues in cash to Don Smith at the next meeting you attend (no checks, please) or send them via PayPal to Scott Ney at stnst2@aol.com (Scott will convert them to cash and give them to Don, who takes care of our monthly room arrangements). Thank you for continuing your membership with the LSCC in 2024!

Market Square

A place for the Lebanon Stamp Collectors Club to buy, sell, and trade



POLAND STAMP COLLECTION FOR SALE: This collection consists of five albums and dust covers of very good quality, a detailed record book of the stamps, five stock books, and first day covers. Most of the “cancelled to order” stamps of later years are backed up with mint stamps in the stock books.

Albums

1860-1939, pages 1-52, (includes airmail)

1944-1959, pages 1-81

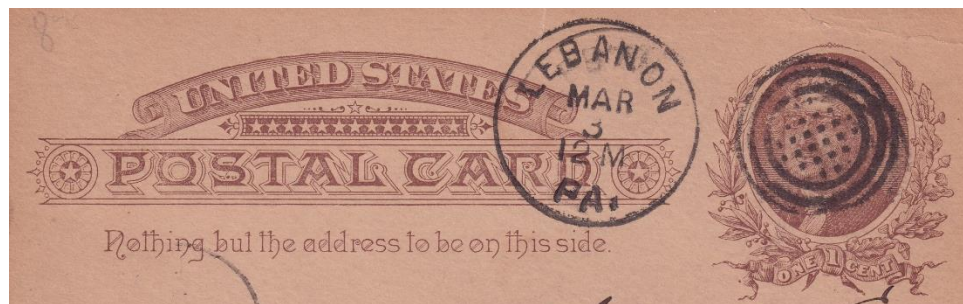
1960-1967, pages 82-166

1968-1974, pages 167-242

1975-1984, pages 213-329

Call Jim at 717-202-5533.

RESEARCH REQUEST: Information relating to Ney (1881 – 1903) in Pennsylvania, as well as related post-offices Cold Spring, Pearson, and Lottel. Ney was located in a sparsely populated area in the northern part of Lebanon County; the Cold Springs Hotel was its most prominent landmark. Scans of covers and other ephemera would be greatly appreciated. Please contact Scott Ney at stnst2@aol.com.



The Lebanon Stamp Collectors Club Lebanon, PA 17042 - 17046