

THE PATENT

Monthly newsletter of the Lebanon Stamp Collectors Club

November 2023

Number 52

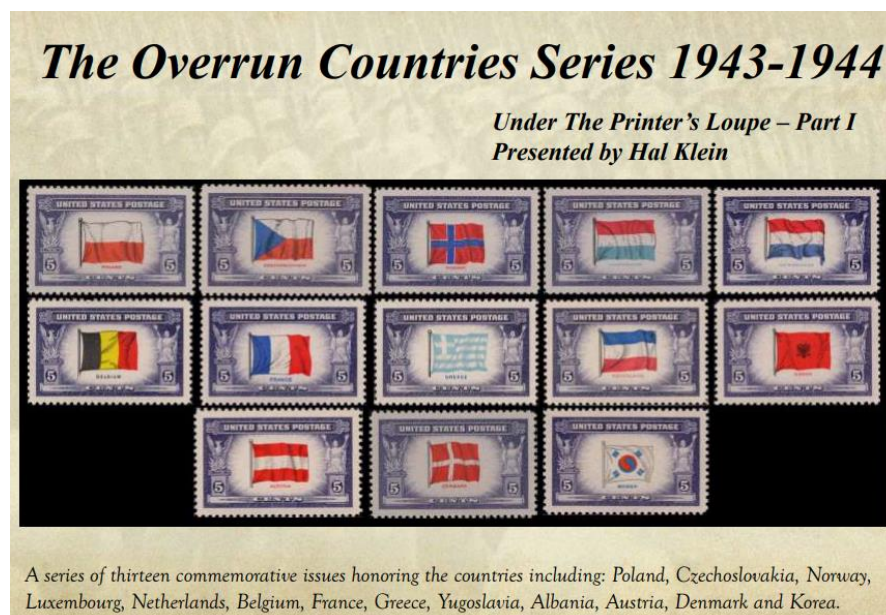
The November meeting of the Lebanon Stamp Collectors Club will be held on Tuesday, November 21, 2023, at 6:30 p.m. at the Lebanon Community Library, 125 North 7th Street (17046), in historic downtown Lebanon. Scott Ney will present on the inflation period in Germany and other neighboring countries, which hit its peak 100 years ago this month.

The October Meeting of the LSCC

In October, our good friend and longtime member Hal Klein treated us to some insights on two of his favorite US issues, the Overrun Countries series of 1943 – 1944, and the Prexies of 1938 – 1954. All of us probably have a favorite Prexie or two! Hal talked about the varieties of the Norway issue of the Overrun Countries series.

While there are no pictures or notes to report from October's meeting, we do note that Hal is very well versed in both subjects, in terms of both printing varieties and postal history, and has presented on them before. Here's a link to an overview presentation of the Overrun Countries series that he gave to the Philatelic Society of Lancaster County in 2018:

https://lcps-stamps.org/wp-content/uploads/2018/02/2018-02-14_Klein-OverrunCountriesSeries1943-44Part1F.pdf



Emails from Overseas

Editor's note: Our friend and longtime president of the Lebanon Stamp Collectors Club, Dick Colberg, is busy this fall visiting his home away from home, and engaging in our favorite international hobby of stamp collecting. Here's some correspondence that he's been sharing with us.

Tuesday
October 3, 2023

Hi guys,

I may or may not have told you that I am exhibiting at Marcophilex in Epernay Oct. 14-15. This is an annual postal history exhibit of L'Union Marcophile, an organization that I've belonged to for about 15 years. I'll be exhibiting the postal history of Condom.

The exhibit catalogue was received a few days ago. There are 50 exhibits, pretty good stuff! I noted an exhibit by a fellow Paris Stamp Club member. He's the guy who is the Director of Security at the Senat and made the arrangements for the June meeting and dinner that Nancy and I attended. Turns out he's into all things Senat. At Epernay he's exhibiting Siege of Paris balloon mail. Oh, but it's more specialized than that. This is balloon mail sent from the Senat!

My exhibit makes this an International show – I'm the only non-French exhibitor. The same venue was used in 2012. Hope I can remember my way around! Lots of walking, but not too bad. Staying at the same hotel. About a 10-15 minute walk from the train station and about the same time from the hotel to the exhibit venue.

These guys know how to stage a stamp show! After mounting the exhibits on Friday afternoon, they feed the exhibitors and dealers. Then at 11 a.m. on Saturday they have a "Vin d'honneur"; wine and munchies for all on hand at that time. As the venue is bit off the beaten path, they make lunches available, by prior order, for 12 euros each day.

I sent emails to all attending dealers asking that they bring any U.S. postal history with them. I've found that very few dealers will pack U.S. material when traveling to out-of-town shows - too little call for it. One dealer actually responded.

There is one exhibit of U.S. material: Postal cards sent from the U.S.A. to France and the French Colonies

As this is the heart of champagne country, I assume champagne will figure into the festivities somehow. Last time, the banquet was held at a champagne bottler's facility and we each got a bottle of champagne with a special Marcophilex label on it. Nancy and I eventually drank the contents! Several friends from the Paris Stamp Club are exhibiting, so I'm looking forward to the weekend.

At least one friend has "gotten the joke", as he wrote and said he'd be at Epernay to see my "preservatifs", French for condoms. This will be my first exhibit of French material at a Marcophilex. Previously, it's all been non-French material: Lititz postal history, Baltimore Carrier Stamps, Mexico Express Company Envelopes, Moline Plow covers, etc. The exhibitors are limited to three 12-page frames, so it's hard to get too carried away.

I have my train tickets and am ready. Epernay is northeast of Paris, toward Belgium. About 70 euros round trip, very reasonable, I think.

Before that, Nancy and I will be in Paris next Tuesday and Wednesday for the monthly meeting of the Paris Stamp Club.

Best regards to all,

Dick Colberg

Thursday
November 9, 2023

Hi guys,

Had a great day in Paris today! There's an article coming your way after I spent some time at a dealer's 1-euro box. I found four covers of note. Spent 4 euros.

To put that into perspective, I spent 6 times that on train and Metro tickets and 11 times that on a 2-hour lunch with my friends. Sounds about right, huh?

I bought these covers before lunch and I was able to bounce them off my friends at lunch. One marking needed some research and my friend just sent me an email a few minutes ago with the answer. I'll see these same guys at the Paris Stamp Club meeting next Tuesday night.

Watch this space!

Dick

Friday
November 10, 2023

Hi guys,

As advertised, here is the article I wrote based on my cover purchases at Champarret yesterday. We are having a great time. Nancy and I will be in Paris next Tuesday and Wednesday. The November meeting of the Paris stamp club is on Tuesday night.

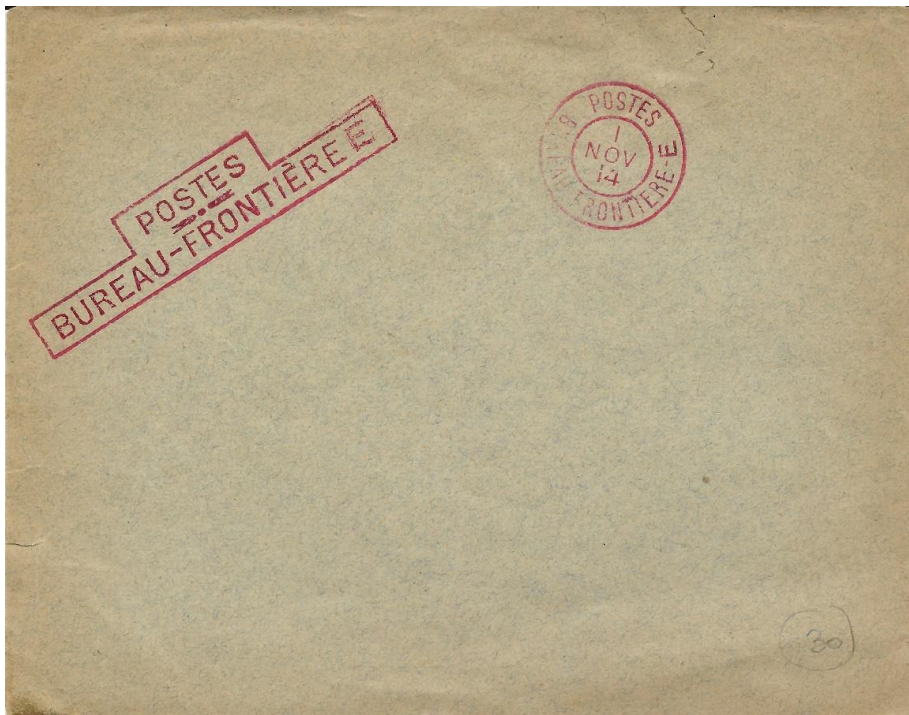
Best regards to our fellow LSCC members.

Dick

Champarret – 2023

It's billed as "Le Salon Philatélique D'Automne 2023". (The Philatelic exhibition of autumn 2023.) It's normally held the first or second weekend in November in Paris at a large exhibition space called Champarret. Traditionally held on Thursday through Saturday, this year it was Wednesday through Friday. It has been a regular in my French doings for at least ten years. The day normally includes a 2-hour lunch with three of my friends from Paris. I take the train from a town near our French home into Paris and then a Metro ride to within two blocks of the exhibit space: about two hours in transit. This year there were 61 dealers, several foreign postal administrations (including the U.S. surprisingly) and La Poste, the French Post Office.

I went in with no shopping list in mind: always dangerous! At the stand of German supplies merchant Leuchtturm I spotted a 1-euro box of French covers. What was outstanding is that most 1-euro boxes are huge and in total disarray. These were neat and orderly. After a couple of minutes of searching I found an interesting WW I cover. After 10-15 minutes I had found three more and figured there was an article in them! And this is it.



The first cover is an envelope of standard European size, unused and preprinted in red. Diagonally across the upper left corner is printed “**POSTES / BUREAU-FRONTIÈRE E**”. This is outlined in red, too. Printed at top center right is a double circle CDS with **POSTES / BUREAU FRONTIÈRE- E** between the two rings and in the interior, **1 NOV 14** for the date. I assume there were several Bureaus and this one is E.

I am assuming that this is a WW I envelope made available to the French soldiers. With the date preprinted, I also assume that these were printed with some regularity, probably monthly. When used, these envelopes would require authentication from the soldier’s superior officer or some other official in order to be sent free.

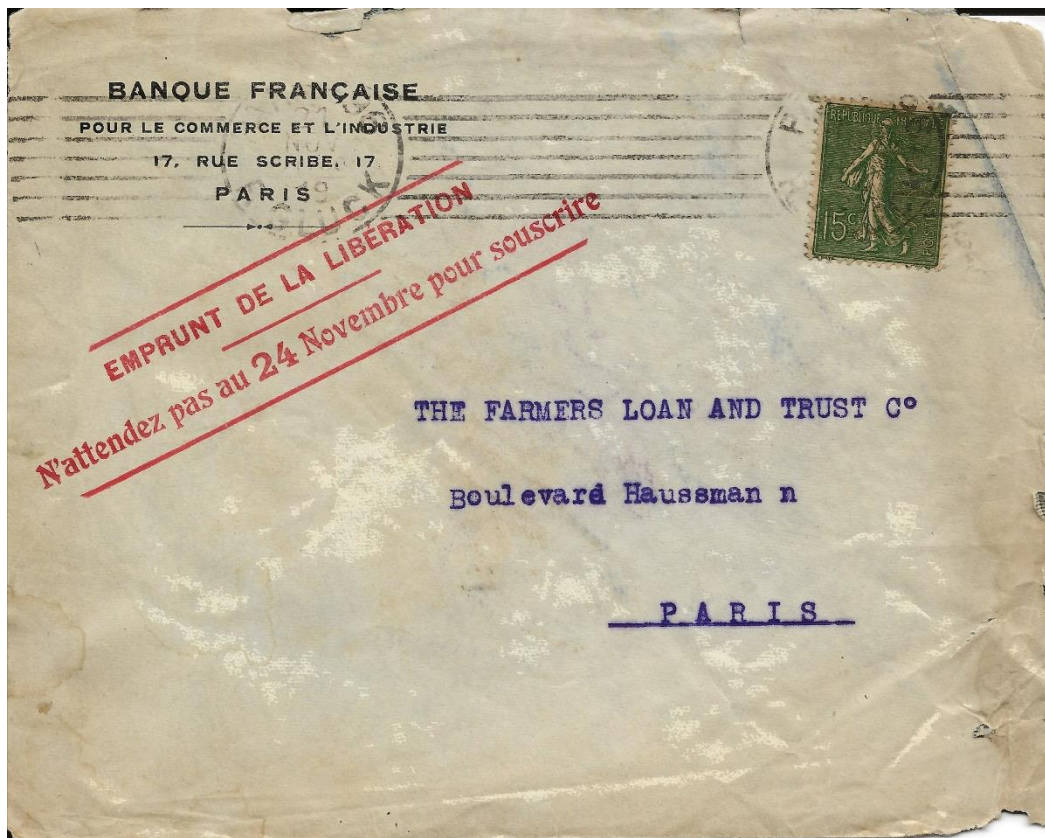


The next cover is also related to WW I. There’s a lot going on with this cover. It is dated May 26, 1916, in a small CDS in the upper right corner. It is a double circle CDS with **TRESOR ET POSTES / *119***. There is a large circular cachet in the upper left center that reads **CONVOIS AUTOMOBILES / * SECTION SANITAIRE 89 ***. In the center of the inside circle is a figure of a seated female Liberty. One of my Parisian friends who saw this item researched the CDS hand stamp and says that Postal Sector 119 refers to the 88th Infantry Division which was disbanded on January 25, 1919.

Written in red crayon across the front is **R _____ / 31/5/16**. That could refer to the date RECEIVED or the date RESPONDED to, we can’t know.

The CDS is the authorization needed for the sender to send this postage-free. The sender is someone assigned to the referenced Sanitary Section. Since acquiring another Sanitaire cover last month I’m learning a lot about this system. During WW I there was a large transportation network for getting wounded soldiers from the front lines to hospital care at the rear. Whole

railroad trains were devoted to this effort and, as we can see from this cover, automobiles (probably trucks), too. I saw a figure on TV last week that said that during WW I, French soldiers were dying at an average rate of 900 per day! November 11, Armistice Day, is observed in virtually every village in France. We attend the local observance when we are here. While it is not an official holiday, many businesses close for the day.



This next cover is also interesting. It is a year post-WW I and is referring a Liberation Loan drive. It's from a French bank to a French bank. The red overprint says **Liberation Loan. Don't wait for November 24 to subscribe.** The roller cancel is dated Nov. 21, 1919, three days before the November 24 date referenced in the overprint (Or is it?).

There's no way to tell if the envelope contents were regarding the loan drive or just Banque Française using up their supply of pre-printed envelopes.

Now, having said all of this, I researched the Liberation Loan. It looks like the drive was in 1918, right after the war! So, in all probability, it really was Banque Française using up old envelopes!

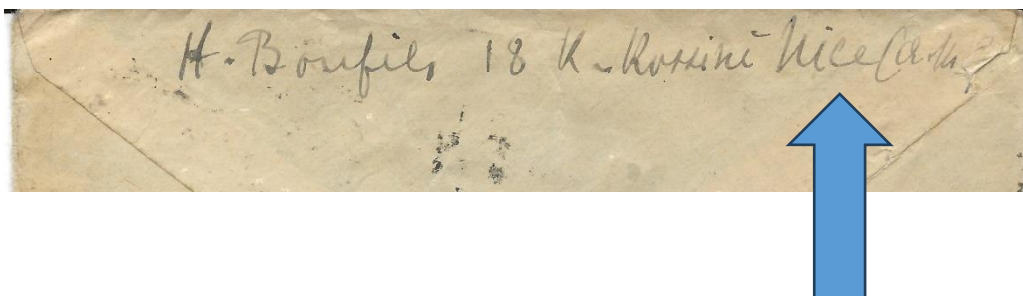
Now we switch to WW II. The cover shown below is roller cancelled and dated March 21, 1944. 17H50 is the time: 5:50 p.m. Note that there is no location in the cancellation. This was common during WW II. There were "blackout cancels", so called because the town name was blacked out. There are also "dumb" cancels, where the town name part of the cancel is just blank. In this

instance there doesn't seem to have been any attempt at including a town name at all. The letter was sent to Assnieres, a Paris suburb. These types of cancellations were used as a security measure. In case the contents revealed location-sensitive information if gotten into enemy hands, the location could not be determined from the cancellation.

Now the ah-hah part. Below the cover shown is a partial scan of the reverse side of the cover. It was clearly sent from Nice. So much for security!



Here's the back side.



So, there you have my saga of four interesting covers from a stamp show in Paris. At a euro apiece, I spent 4 euros on the covers. But wait, I spent six times that on train and Metro tickets. Oh, and 11 times that on the 2-hour lunch with my friends at a nice restaurant. Being your scribe is an ugly job, but someone has to do it!

Editor's Note: Thanks, Dick, for these reports! It is quite a pleasure to share them with the rest of the club.

It's time to start thinking about next year!

Below is a table with the dates for next year's stamp club meetings. Please consider volunteering to put on a program for the club at one of our regular meetings. Submissions for the newsletter are always welcomed, all year round!

Date	Presenter and Subject
January 16, 2024	
February 20, 2024	
March 19, 2024	
April 16, 2024	
May 21, 2024	
June 18, 2024	
July 16, 2024	
August 20, 2024	
September 17, 2024	
October 15, 2024	
November 19, 2024	
December 17, 2024	Annual Club Dinner, Location TBD

Calendar of Events

2023 Lebanon Stamp Collectors Club Meetings

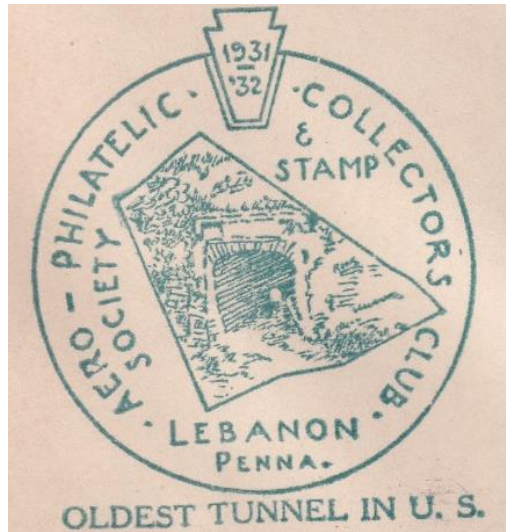
Date	Presenter
November 21, 2023	Scott Ney – A peek at the post-Great War Hyperinflation in Germany and Eastern Europe
December 19, 2023	Annual club dinner, location TBD

The PSLC Events Calendar is located at the following link:

[Philatelic Society of Lancaster County – Award-winning, non-profit community organization dedicated to promoting stamp and postal history collecting as a hobby for education and fun. \(lcpss-stamps.org\)](https://lcpss-stamps.org/)

The Lebanon Stamp Collectors Club thanks the Philatelic Society of Lancaster County for hosting our affiliate page, which is accessible by clicking the following link:

[The Lebanon Stamp Collectors Club – Philatelic Society of Lancaster County \(lcpss-stamps.org\)](https://lcpss-stamps.org/)



The Lebanon Stamp Collectors Club

Lebanon, PA 17042 – 17046

We are the heirs of the long tradition of stamp clubs and collectors in Lebanon, Pennsylvania!