



Philatelic Society of Lancaster County

**The James Buchanan Chapter (#173) of the American Philatelic
Society**

American Topical Association-Chapter 118

Website: <https://lcps-stamps.org>

2nd Wednesday/Month-Meet in Person at Landis Homes at 6:30 p.m.

4th Wednesday/Month-Meet Virtually at 6:15 p.m.

The Veranda Chronicles

It was exciting to see so many of you at the July Society Auction. This was great. We had a full house and most items that were submitted were sold. Buyers and sellers had smiles on their faces. Thanks go to our auction team volunteers who made this possible. The club earned \$57 from donated items, and this will go a long way. Note that our next auction for 2023 will be on September 13th. And extra kudos go to Dick Shaefer, who has been the club's auction recorder and behind the scenes auction leader for decades. This was his last auction, as he will be retiring from this office. Please thank him when you see him.

The Philatelic Gathering last month at the Chester County Historical Center was fantastic. Mark Schwartz and Robert Myers presented on NY Postmaster Provisionals and QEII, respectively. If either or both of these topics are of interest to you, please visit our website under "Study Groups/Philatelic Gathering." Both presentations are there.

I was pleased to share with you at our virtual meeting on July 26th another new discovery of a major double transfer on the U.S. private die proprietary match revenue stamp RO176d. I am hoping to have this added to the *Scott Catalogue* in the near future.

And thanks in advance to the picnic team who are preparing another great fellowship event for you on August 9th. It will be the first time since 2019 and COVID that there will be freshly cooked burgers and hotdogs along with all the goodies that you all bring.

I would like to congratulate PSLC treasurer Lou DiFelice, who is a recipient of the American Philatelic Society's 2023 Nicholas G. Carter Volunteer Recognition Award for local service. Lou is

a past president of the PSLC and has served as our treasurer since 2011. We heartily congratulate Lou on this well-deserved honor. He is recognized in the July 2023 issue of *The American Philatelist*.

Finally we were saddened with the news of the passing of long-time PSLC member and past president, John Ahlfeld on June 22nd. He will be missed, as everyone saw him as such a gentleman; please keep Alice and the family in your thoughts and prayers.

Stay cool for the rest of the summer, and see you soon, Dr. Charles J. DiComo.

Upcoming Programs

9 August 2023

Philatelic Society of Lancaster County Picnic

When: Wednesday, 09 August, **6:00 p.m.**

Where: Millersville Memorial Park (directions below)

Remember: Please bring your appetizer, side dish, or dessert for which you signed up. Burgers, hotdogs, drinks, and condiments will be provided.

Buy, Sell & Trade Night: Please bring no more than a few boxes of stuff for BS&T this evening. Club donated items will also be on sale for the benefit of PSLC.

Officiating & Cooking: John Hostetter, Bill Greiner, Dan Martin, and Paul Petersen. Post-picnic cleanup help is always appreciated.

Directions to the Park: *Driving west into Millersville from Lancaster on 999, the Park is on the north side of 999 (Manor Ave.) just west of the intersection of George Street with 999. (See map at left) A landmark is John Herr's Market. The park is just behind this supermarket. Also, across the street from the park is the Barn Door Restaurant. We'll be meeting in Pavilion-A, the big one just down the hill and on the left. Park right behind the pavilion in the large adjacent lot. Immediate Past President Doug Milliken has been very successful ordering perfect picnic weather over the years, and we are fortunate that he has agreed to an encore again this year. For those technically savvy, conduct a MapQuest or other map search for 9 Blue Rock Road, Millersville, and the park is right behind this location.*

23 August 2023 at 6:15 p.m.
Collecting Cinderella's
Dick Colberg and Paul Petersen

Tonight's presentation will fall into two parts. In Part-I, Paul will try to explain the various definitions of Cinderella's and how they are an important part of philately. Some of these are denominated while others are not. Some are listed in the *Scott Catalogue*, while others have catalogs of their own. With the latest exhibition rules, some Cinderella's may be part of competitive exhibiting. He will then provide a survey of assorted Cinderella's used for charity (i.e. Xmas Seals, TB stamps, and more), propaganda, souvenirs, advertising, promotion, commemoration, taxation, and many others. The prices of Cinderella's range from well less than a dollar to thousands. He will end with a listing of pertinent websites especially designated for Cinderella collection.

In Part-II, Dick will give details and examples from his Cinderella collections, and discuss those that have denominations, including many that moved the mail and parcels. This includes steamship and railroad companies, local posts, along with other items related to the Spanish Civil War, Duck Stamps, the Pony Express, NASA, Rattlesnake Island, and the Baltimore Carriers. Dick will show that serious collecting of these items takes the same skill and diligence as any other stamp or postal history collection. Both presenters hope that many in the audience will reexamine their Cinderella's and work with them, and that some others may see something tonight that will ignite them into exploring a new collecting area. As RD Noble and Woody Hann always note "Collecting precancels is fun." And the same can be said about Cinderella's.

PSLC Calendar

Descriptions for many of these programs are found on the PSLC website. Please contact program manager Paul Petersen at pcpetersen@comcast.net for information and links to virtual meetings held via Zoom.

9 August: Club Picnic, Freedom Memorial Park, Millersville, PA

23 August: Collecting Cinderella's. Dick Colberg and Paul Petersen

13 September: PSLC Auction, Landis Homes

27 September: A Prize Agent, A Naturalist, and A Navy Captain: A Penny Black Story. Mike Wilson

11 October: British Internal Airmail: 1933-1934. Mike Bach

25 October: Only You Can Collect Smokey the Bear. Rick Barrett

8 November: Development of Perforations in the U.S. by Toppan, Carpenter, Casilear & Co.: 1855-57. Dr. Charles J. DiComo

22 November: The Peak of Post-Great War Hyperinflation in Germany and in Eastern Europe. Scott Ney

13 December: December Dinner. Venue & time TBA

27 December: Advertising Covers with Interesting Philatelic Features. Mike Wilson

24 April 2024: Radio Reception Verification Labels. Ron Breznay

23 October 2024: The Philately and Deltiology of Walpurgisnacht and the Hexentanzplatz. Ron Breznay

2023 Lancaster Stamp Shows: These are held at the Farm & Home Center of Lancaster County, 1383 Arcadia Road, Lancaster, 17601. The remaining shows scheduled for 2023 are on 27 August, 29 October, and 15-16 December. Please check the PSLC website for more information.

2023 Philatelic Gatherings

Our 2023 Philatelic Gatherings are underway! If you are interested in presenting, please reach out to Bill Schultz or Dr. Charles J. DiComo.

August 19, Saturday, 10 AM - 12:00 PM

- **John Howker**, *Airmail Stamped Envelopes*
- **Bill Schultz**, *The Enclosed 5 Cent Rate*

The Philatelic Gathering is held at the Chester County History Center, 225 N. High Street, West Chester PA, 19380. Free on street parking is available, and free coffee and donuts. After the meeting, we invite whoever wants to join the group for a Dutch treat luncheon at a nearby restaurant in West Chester.

St. Joseph, Missouri: “The Way West”

By

Stanley E. Jones and Mary Katherine Klose

INTRODUCTION

St. Joseph, MO, is a historic city that can boast of having played a significant role in the expansion west. Beginning as an Indian Trading Post, St. Joseph grew rapidly and was incorporated in 1843 [1].



Figure 1. A remarkable cover mailed on the 100th anniversary of the Pony Express. Note the turn of the century postage stamps that were used to pay the postage.

THE PONY EXPRESS

As the gateway to the west, the city became the launching point for the Pony Express. Wells Fargo & Co. became the first express company to offer a mail service to the west coast. The Pony Express mail service now occupies an iconic page in philatelic history.



Figure 2. Pony Express monument, downtown St. Joseph, Missouri

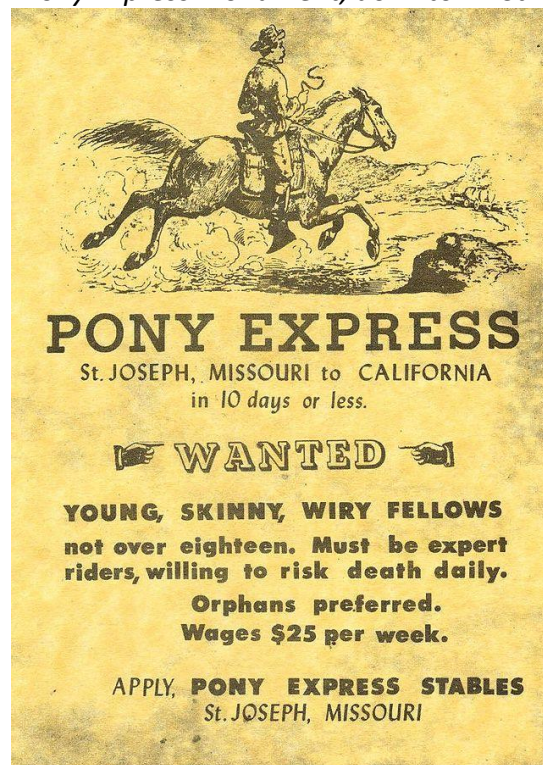


Figure 3. Pony Express recruitment poster

The stamps that they used are listed in the Scott Specialized Catalog in the local section under the general numbers 143L1-143L9, with many variants. A typical stamp is shown in Figure 4 below.



Figure 4. A typical stamp for use on the Pony Express. There are several denominations and colors attached to this design. They are listed in the Scott Catalog.

Wells Fargo Pony Express Stamps are very scarce and their catalog values reflect this. A degree of caution must accompany the collector of this genre. There are frauds and reprints of these stamps around, so beware. Even more difficult to find are covers which survived the arduous journey west to California. Examples of these from a recent Rumsey auction at WESTPEX in San Francisco [2] are shown in Figures 5 and 6. These are very elegant covers with an extremely high retail value. The very high value of all items connected to the Pony Express is partly due to the short time that it was in operation. The Pony Express line was only in operation for 18 months, April, 1860-October, 1861. The Pony Express was replaced by a telegraph line and that ended this colorful episode in the history of the expansion west.

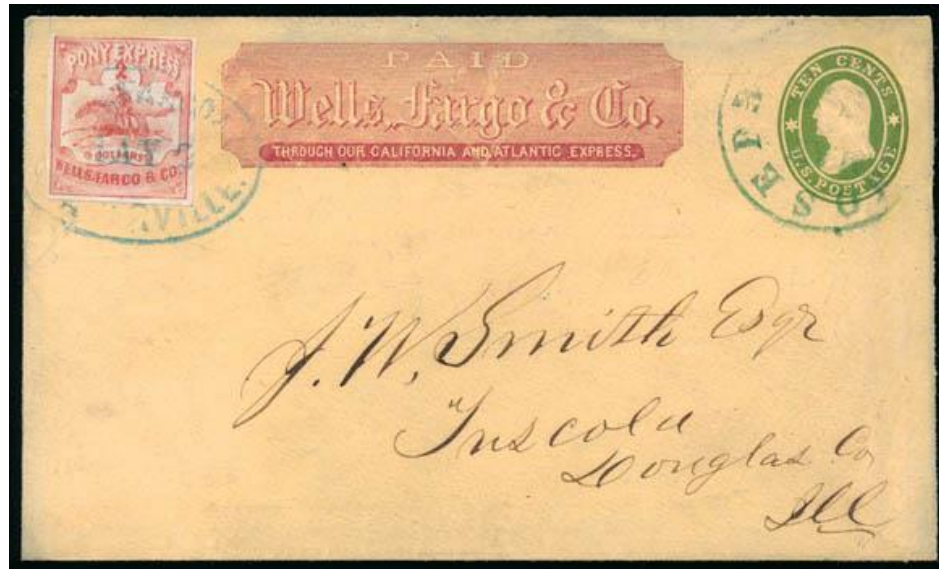


Figure 5. A cover bearing a canceled \$2 Wells Fargo Stamp. This cover was offered in the Rumsey Sale, Lot #728 [2]. It realized \$18,000 plus a buyer's premium of 18%.

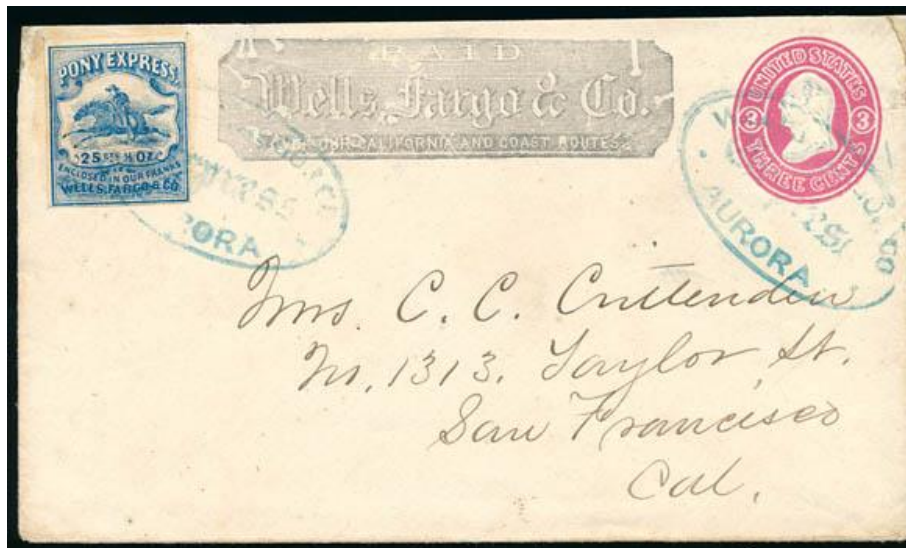


Figure 6. Another cover from the Rumsey Sale [2], Lot #729, bearing a different Pony Express Stamp. This cover realized \$4500 plus a buyer's premium of 18%.

RAILROAD TRAFFIC

St. Joseph, MO, became a hub for railroad traffic across the Missouri River. By the turn of the 20th century, a number of major railroad routes passed through St. Joseph, going in every direction. One of the railroads was the Hannibal & St. Joseph RR Co., Figure 1 and Figure 8, below.

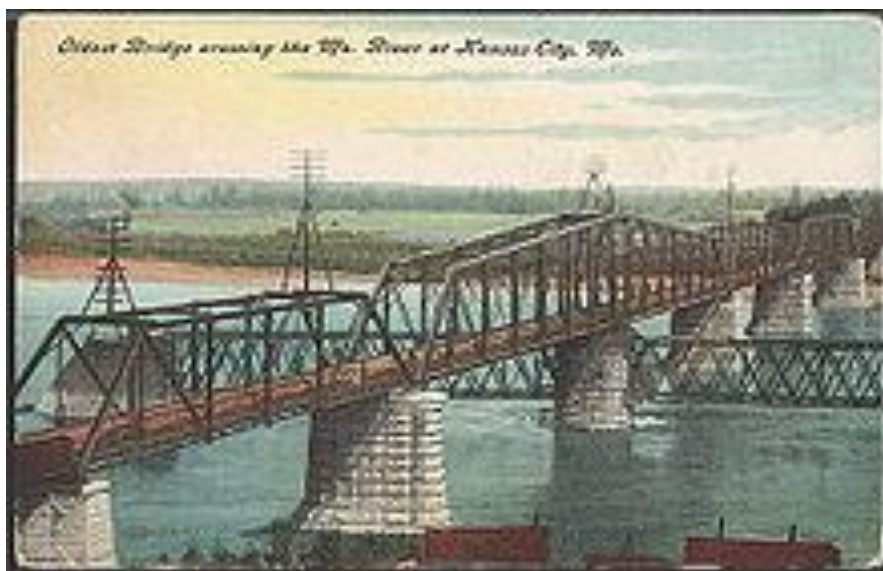


Figure 7. The First Hannibal Bridge across the Missouri River. This was the first permanent rail crossing of the Missouri River.



Figure 8. Hannibal & St. Joseph Railroad Precancels on 1-cent Battleship documentary stamps. These two stamps are different. The stamp on the left is rouletted 5 ½ and the stamp on the right is hyphen-hole 7 perforated. These are two distinct varieties.

Another railroad that used the junction at St. Joseph was the St. Louis, Iron Mountain & Southern Railway Co., “The Iron Mountain Route.” Three precanceled battleships used by this railroad are shown in Figure 9.



Figure 9. Three precanceled Battleships used by the St. Louis, Iron Mountain & Southern Railway Co. The stamp at the top is rouletted 5 ½ and the two stamps at the bottom are hyphen-hole 7 perforated. Two distinct varieties.

A railroad with a direct connection to St. Joseph was the Kansas City, St. Joseph & Council Bluffs Railroad Co. Precanceled Battleships used by this company during the period of 1898-1901 are shown in Figure 10.



Figure 10. Two precanceled Battleships that were used by The Kansas City, St. Joseph & Council Bluffs Railroad Co. Both of these stamps are rouletted 5 ½.

The smaller railroads mentioned in Figures 8-10 were merged or absorbed by a larger railroad that operated through St. Joseph, The Missouri-Pacific. Precanceled Battleships used by the Missouri-Pacific are shown in Figure 11. The Missouri-Pacific Railroad Co. was one of the first railroads west of the Mississippi. It was formed by the merger and acquisition of dozens of smaller railroads and was later absorbed by the Union-Pacific Railroad.



Figure 11. Precanceled Battleships used by the Missouri-Pacific Railroad Co. The Missouri-Pacific absorbed by merger or acquisition most of the smaller railroads. The three stamps at the top are rouletted 5 ½ and the five stamps at the bottom are hyphen-hole 7 perforated.

“PAPER MOON”



Figure 12. Paper Moon.

We close this paper with a very interesting connection that the movie “Paper Moon”, (Figure 12) has with St. Joseph Free Bridge, Figure 13. We all remember this film as the debut role of Tatum O’Neal. She starred with her father Ryan O’Neal in a comedy-drama that was directed by Peter Bogdanovich. The film was nominated for four Academy Awards and won two. Tatum O’Neal, at the age of ten, became the youngest person to win an Academy Award for Best Supporting Actress in 1973. The reason that this connection is included in this paper is that one of the authors (MKK) actually witnessed the filming of the conclusion of the movie in St. Joseph at the St. Joseph Free Bridge, Figure 13. This part of the city of St. Joseph is the historic “Old City” and it was virtually shut down to accommodate the filming of the movie. The movie ends as Tatum and Ryan cross the St. Joseph Free Bridge on to new adventures as scam-artists west of the Missouri River.

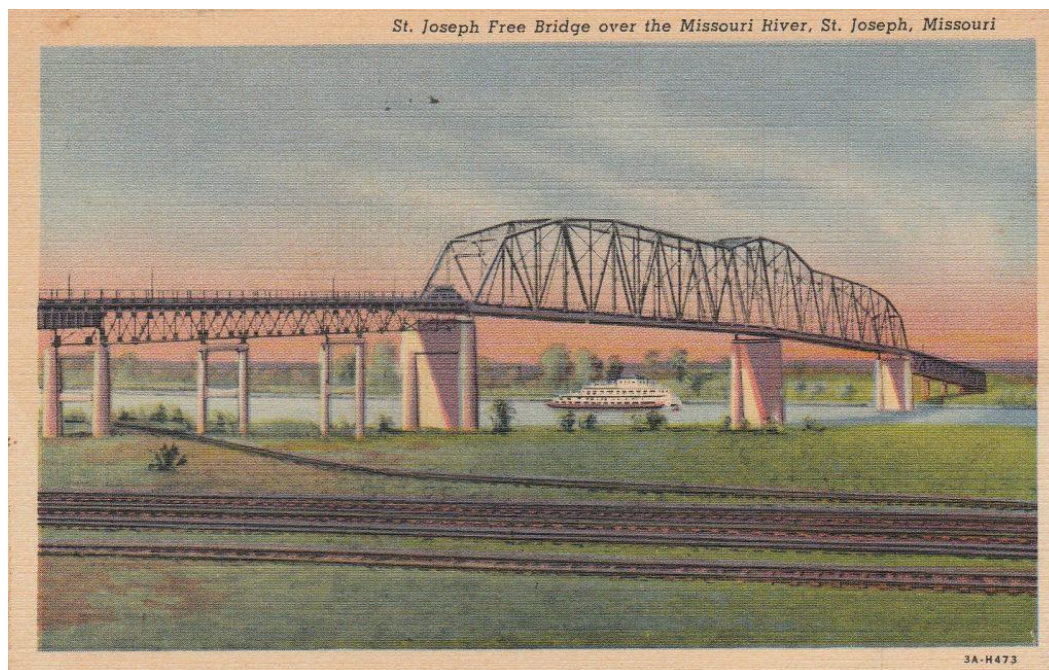


Figure 13. St. Joseph Free Bridge featured in Paper Moon.

MKK: When I moved from Alabama to St. Joseph, Missouri in 1970 I quickly learned that many exciting things had happened in St. Joseph, all of them before the turn of the 20th century. The Pony Express began there, and the outlaw Jesse James ended there. School children visited both the Pony Express stables and the site of James’s murder (where we spied an enormous “bullet hole” in the wall). That changed in 1972 when the cast and crew of “Paper Moon” arrived to film its final scenes. They chose well, as the streets of 1972 St. Joe were, without set design or alteration, a tableau from the Great Depression. Filled with architecture from the 1800s and a bridge that was a dead ringer for a depression era river crossing, its downtown and environs were custom made for this assignment. Town buzzed with Ryan O’Neal sightings and lucky locals scored work as extras, streets were closed to the paltry traffic they supported, and the enormous brass doors of the Missouri Valley Trust Co. were more than ready for their close-up, Figure 14.

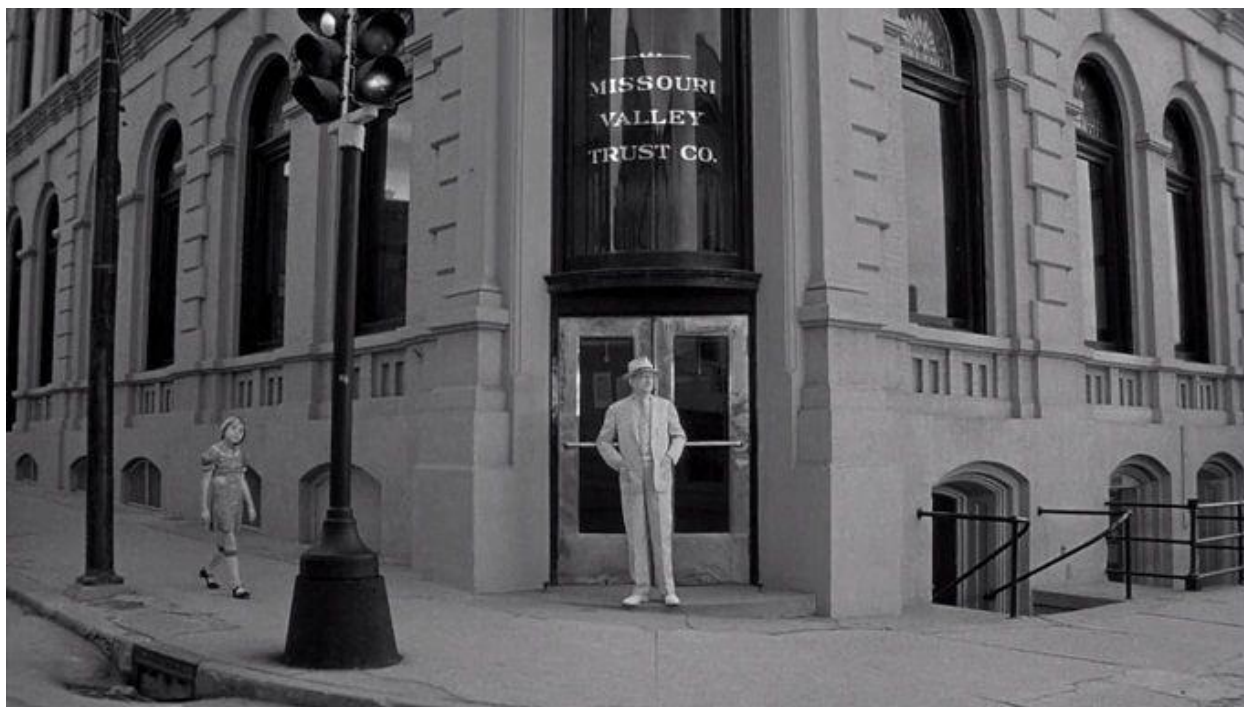


Figure 14. Still photograph from Paper Moon featuring brass doors of the Missouri Valley Trust with Tatum O'Neal entering from the left.

This flurry of excitement was a topic of conversation for years to come, and I'm able to confirm that nothing else of this consequence transpired in St. Joseph for the remaining seven years of my residence. But, oh, what a movie was concluded there.

REFERENCES

1. National Park Service, National Historical Trail, 2023.
2. Schuyler J. Rumsey Auctions, Inc., Auction #60, WESTPEX Sale, 2015.

Club Member Anniversaries

Compiled by Tom Nichols

Here we recognize members who have joined in July since 1997. Congrats to all of the collectors listed below:

<u>Name</u>	<u>Date Joined</u>	<u>Years a member</u>
Laura Duncan	08/10/2021	2
Steven Kennedy	08/10/2019	4
Tom Nichols	08/04/2017	6

Closed Album

It is with great sadness that I inform you of the passing of PSLC member and past president, John R. Ahlfeld on the 22nd June. You will find his obituary on the link below. There you'll read about his full and accomplished hobby and professional life.

John joined PSLC in 2008, and years ago he shared with me that he would be present at all of our events, unless he and Alice were at 'the cabin' (in Culver Lake, NJ) or vending pattern glass at a regional show. He was also an APS member. John and Alice were regulars when we had dinner at local restaurants in honor of our out-of-town speakers where they engaged the other members and speakers alike. Always the gentleman, he contributed to all we did adding leadership in many of our business discussions.

When I was editor of the newsletter, he was the one who suggested having some articles such as "What is your favorite stamp (cover)? These composite articles were very well received with multiple participants from the club. I last saw John at a Sunday Stamp Show just prior to Covid-19, and he reported that his cancer had returned, and it was aggressive. He remained with us until near the end attending some Zoom meetings when he was able and supporting us for the last time this year with his 2023 dues. At the picnic next month, there will be a card for membership signatures to be sent to Alice. Please keep Alice and the family in your thoughts and prayers. Sadly, Paul P-

<https://www.dignitymemorial.com/en-ca/obituaries/branchville-nj/john-ahlfeld-11344874>

PSLC Officers

President Dr. Charles J. DiComo 914-450-3791 charlesdicomo@gmail.com	First Vice President John Hostetter 717-394-9626 jhostetterjr@gmail.com	Second Vice President Bill Greiner III 717-471-2354 sunfighter@verizon.net
Secretary David Weichert 717-342-3120 stampsbydave@gmail.com	Treasurer Lou DiFelice 717-572-3419 loudifelice@gmail.com	Publicity Len Kasper 717-723-1864 hotrodparts33@aol.com
Membership Chair Wayne Heim 717-725-7192 heimwayne@gmail.com	Program Manager Paul Petersen 717-299-5640 pcpetersen@comcast.net	Website Coordinator Dr. Charles J DiComo 914-450-3791 charlesdicomo@gmail.com
Newsletter Editor Scott Ney 717-383-1736 stnst2@aol.com	APS Rep Paul Petersen 717-299-5640 pcpetersen@comcast.net	ATA Rep Paul Petersen 717-299-5640 pcpetersen@comcast.net

General Information

Visitors are Always Welcome!

PSLC dues are \$10.00 a year. For existing members who want to renew their membership for 1 or more years, and/or make a donation to support our Society activities and programs, you can use PayPal-Friends by remitting payment to President Charles J. DiComo, PhD at charlesdicomo@gmail.com and denote in Notes section the reason for payment, your name, and how many years you are paying. Venmo can also be used @charlesdicomo. For new members, please mail/email your [Membership Application](#) along with a check or money order to Treasurer, Lou DiFelice.

We meet in-person on the 2nd Wednesday of the month (Except August & December) at 6:30 p.m. in the Crossings Meeting Room, Landis Homes, 1001 East Oregon Road, Lititz, PA 17542. See our website for directions.

We meet virtually on the 4th Wednesday at 6:15 p.m. For society information and meeting links, contact Paul Petersen (pcpetersen@comcast.net).

Our mailing address is: PO Box 6053, Lancaster, PA 17607



The PSLC is honored to be selected a winner of the 2022 APS Star Route Awards for our website. The Society website (lcps-stamps.org) is our virtual presence; where all can access current and past issues of our award-winning *PSLC Newsletter*; in addition to useful philatelic links, exhibits, presentations, useful resources, affiliates, member spotlight, regional stamp shows, history and awards, etc., with links to our PSLC YouTube Channel and Facebook page.

Empire State Special Feature

The following feature was the Best Article of 2022 as selected by the Empire State Postal History Society membership, which appeared in the NYS postal history journal "The Excelsior!" October 2022, Whole No. 36, New Series, pp. 3 – 6, and is reprinted with the permission of ESPHS and the authors.



High Hill Beach, Long Island, circa 1910 (above) and surf bathing at High Hill Beach, circa 1915 (below).

A One-Day Wonder

Name of post office on Long Island became Jones Beach for a single day in 1932

By Charles J. DiComo, PhD
and Terry Shaw, PhD

Jones Beach, New York today is a popular New York State Park in Nassau County that receives some 6 million visitors a year to its sandy beaches and other attractions.

Its location makes Jones Beach the busiest beach on the East Coast. Just 26 miles from the borough of Queens, or 38 miles to Manhattan's Central Park, Jones Beach's face to the Atlantic Ocean offers a convenient opportunity to escape the sweltering urban areas of Greater New York to relax in the sea air; that's if you can take the crowds.

This is a far cry from 90 years ago when the area off Long Island was more commonly known as High



Hill Beach and had some 80 mostly private cottages along its shores, as can be seen in the postcards shown.

But everything changed in 1939,

though, when urban planner Robert Moses, then chairman of the Long Island State Park Commission, bought this land and created Jones

Staff members pose in front of Savage's Hotel and Casino at High Hill Beach on this picture postcard, circa 1915. The resort community mostly had private summer



Beach.

But let's go back to the early part of the 20th century. The beach did boast Savage's Hotel & Casino, and the area was known for being lax on prohibition laws. But the area remained a mostly hidden gem and with those sleepy summer cottages were enjoyed by a relatively few.

The mostly summertime residents were provided mail service from the High Hill Beach Post Office that opened in 1915. From 1919 to its closure in 1940 the post office was under the charge of Postmaster John Alder Haff, better known as "Jiggie." And then, for some unknown reason, a change was made.

In the May 5, 1932 edition of the Postal Bulletin, notice was given that the name of the High Hill Beach Post Office would be changed to Jones Beach effective June 1, 1932.

Similarly, the Official Postal Guide for 1932 lists Jones Beach as Post Office number 24717, a summer Post Office in Nassau County starting



Ferry boat captain and Postmaster John "Jiggie" Alder Haff (1872-1954). From album of Paula Haff Fraziers Photos

on June 1, 1932. This date was likely the scheduled opening for the sum-

mer seasonal post office as such locations generally operated from June through September.

But not so fast, as again for reasons unknown the June 1, 1932 edition of The Postal Bulletin rescinded this action, reverting the name of the post office back to High Hill Beach. Thus, Jones Beach was the name of the Post Office for one day only -- June 1, 1932.

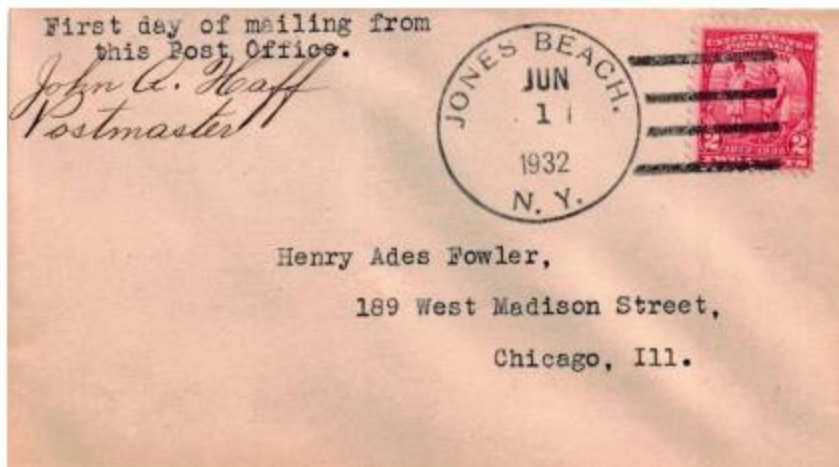
That the post office did provide services that day under its new name is documented by the cover shown at the top of Page 5 that was signed by Postmaster Haff. In his checklist of all known seasonal Post Offices, Smith lists the High Hill Beach Post Office, but not Jones Beach.

At present, this cover with its

Jones Beach 4-bar cancel is the only mail sent from this Post Office that we have been able to document. Furthermore, we are un-

Post Office Name Changed
(Rescind)
NEW YORK
High Hill Beach, Nassau County. The order appearing in Bulletin 15899 changing the name of this office to Jones Beach, effective June 1, 1932, has been rescinded.

Excerpt from the June 1, 1932 edition of The Postal Bulletin.



A first day and last day cover with a Jones Beach circular datestamp from June 1, 1932 and a four-bar cancellation tying a 1932 2-cent Arbor Day Issue (Scott 717). A notation at upper left corner states: "First day of mailing from this Post Office." And is signed, "John A. Haff,

aware of any other Post Offices that, other than perhaps for ceremonial purposes, only operated for a single day, although the seasonal Post Office in Tigiwon, Colorado apparently often operated for only a single day each year.

It seems that the recipient of this cover, Henry Ades Fowler, was likely the philatelist who in 1893 edited the first edition of the Canadian Journal of Philately. That he was still living in the 1930s is documented by a notation in the December 1948 edition of the Journal of the British North American Philatelic Society:

A new member of the Society is Henry Ades Fowler of Hartford, Mich. Mr. Fowler is an "old timer" and published the Canadian Journal of Philately and the International Philatelist as long ago as 1893. He is the only living charter member of the Toronto Stamp Collector's Club which was formed in 1892. Mr. Fowler has maintained his interest in stamps over the years and is continually adding to his stamp collection.

Census data confirms that a Henry

Ades Fowler, who was born in Canada, did live in Chicago during this period.

And now for some speculation. Perhaps Mr. Fowler read the May 5, 1932 Postal Bulletin and noticed the change of name for this post office. Wanting a postmark from the new post office, he sent a letter to the listed postmaster with a pre-stamped cover enclosed and asked the postmaster to cancel the cover on the first day of operation for the post office under its new name. Collectors making such requests often asked the postmaster to sign the cover as well to document the first day cancel.

After its brief life as Jones Beach, this post office reverted back to High Hill Beach and continued to operate under this name until 1940, closing for good soon after creation of the Jones Beach State Park.



A last-day-of-use postcard from the High Hill Beach Post Office, dated September 30, 1935. (Courtesy of Frank Braithwaite.)

The final image shows a postcard that sent from the High Hill Beach Post Office on September 30, 1935. The "Last Day" auxiliary marking on the postcard reflects the seasonal closure of this summertime only post office.

If others have more information regarding the Jones Beach Post Office, please let us know.

Page 6: Authors' bios, acknowledgements, references.

Jones Beach Acknowledgements:

Members of the Empire State Postal History Society, especially Frank Braithwaite, Diane DeBlois, Tom Mazza, Gene DeSalvo, David Williams, Joel Harrington and John Schorn, who after Charles reached out via email with a "request for more information" on the Jones Beach cover, each supplied details which added color to the story.

About the Authors

Charles J. DiComo, PhD, is a lifelong philatelist, postal historian and award-winning author. He enjoys researching,

restoring, writing, publishing, and presenting on a broad array of philatelic and postal history topics. He is president of the Empire State Postal History Society; president of the Philatelic Society of Lancaster County (Pennsylvania); a life member of the U.S. Philatelic Classics Society and editor-in-chief of its newsletter, *The Chairman's Chatter*; on the board of the Pennsylvania Postal History Society and a 30-year-plus member of the American Philatelic Society. A native New Yorker, he currently resides in Lancaster, Pennsylvania, with his wife of 25 years, Kathleen, and their daughters, McKenna and Mia.

Terry Shaw, PhD, is a longtime member, past president and auction manager for the Alaska Collectors Club, a group that specializes in the postal history of the state. He is also a past president of the Gastineau Philatelic Society in Juneau, Alaska and a 25-year-plus member of the American Philatelic Society. Now retired and living in central Oregon he is a charter member of the Central Oregon Postal Collective. In retirement, Terry enjoys selling stamps and covers on eBay, where is known as "AKPHL."

Resources

The Postal Bulletin, May 5, 1932, Vol. 53, Issue 15899, denoting the Post Office Name Change of High Hill Beach, Nassau County, NY to Jones Beach, NY, effective June 1, 1932 (last viewed April 19, 2022) http://www.uspostalbulletins.com/PDF/Vol53_Issue15899_19320505.pdf#search=%2215899%22.

The Postal Bulletin, June 1, 1932, Vol. 53, Issue 15921, denoting the Post Office Name Change of High Hill Beach, Nassau County, NY to Jones Beach, NY being rescinded on June 1, 1932 (last viewed April 19, 2022) http://www.uspostalbulletins.com/PDF/Vol53_Issue15921_19320601.pdf#search=%22Jones%20beach%22.

"New York Postal History: The Post Offices and First Postmasters from 1775 to 1980," by John L. Kay and Chester M. Smith, Jr., The APS Handbook Series, Published by American Philatelic Society, 1982.