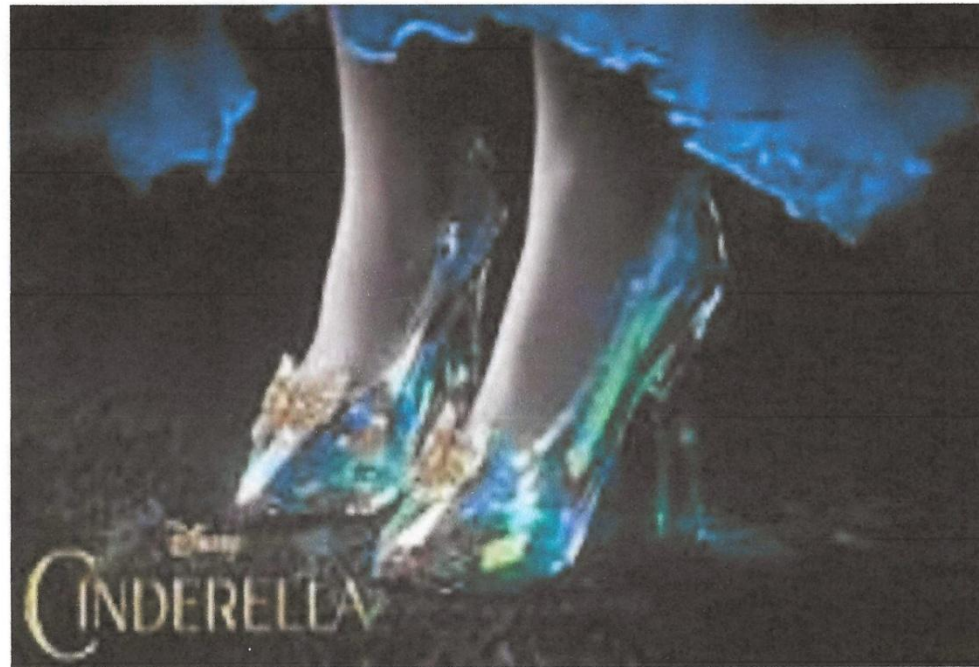


CINDERELLA'S

Presented by Richard Colberg



**For the Philatelic Society of Lancaster County (PA)
August 23, 2023**

The Central American Steamship Company



Central
American
Steamship
Company
San Blas
cancel



Design of cancel SAN BLAS

Suez Canal Stamps



Suez Canal
stamp-
legitimate
usage, in
period.



Spanish Civil War 1936-1939



Baltimore Carrier Stamps



British Railway Letter Stamps



Movie Train Stamps



Rattlesnake Island Local Post



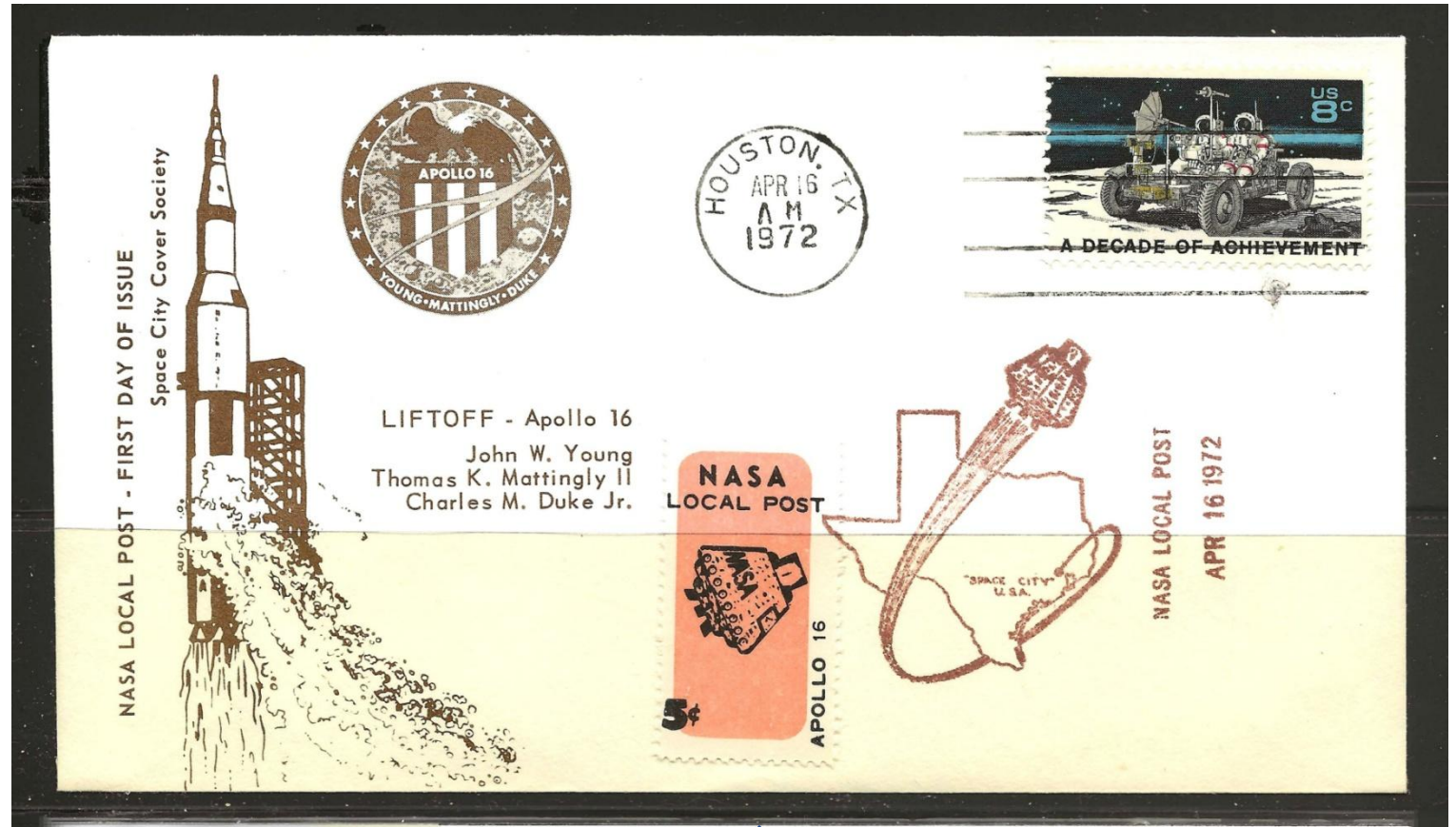
Rattlesnake Island Local Post



Rattlesnake Island Local Post



NASA Local Post



Chautauque Lake Local Post

CHAUTAUQUE LAKE LOCAL POST

This Local Post service is confined to pick-ups at designated docks around the lake and delivery on an indefinite and irregular schedule to the 9 lakeside U.S. Post Offices during a definite period of the summer season. Patrons are warned that all that old story about "neither wind, nor rain, or sleet or stuff" does not apply here.

LAKE MAIL 100 RASPUFNICKS

CHAUTAUQUE LAKE LOCAL POST



CHAUTAUQUE LAKE LOCAL POST



CHAUTAUQUE LAKE LOCAL POST



CHAUTAUQUE LAKE LOCAL POST



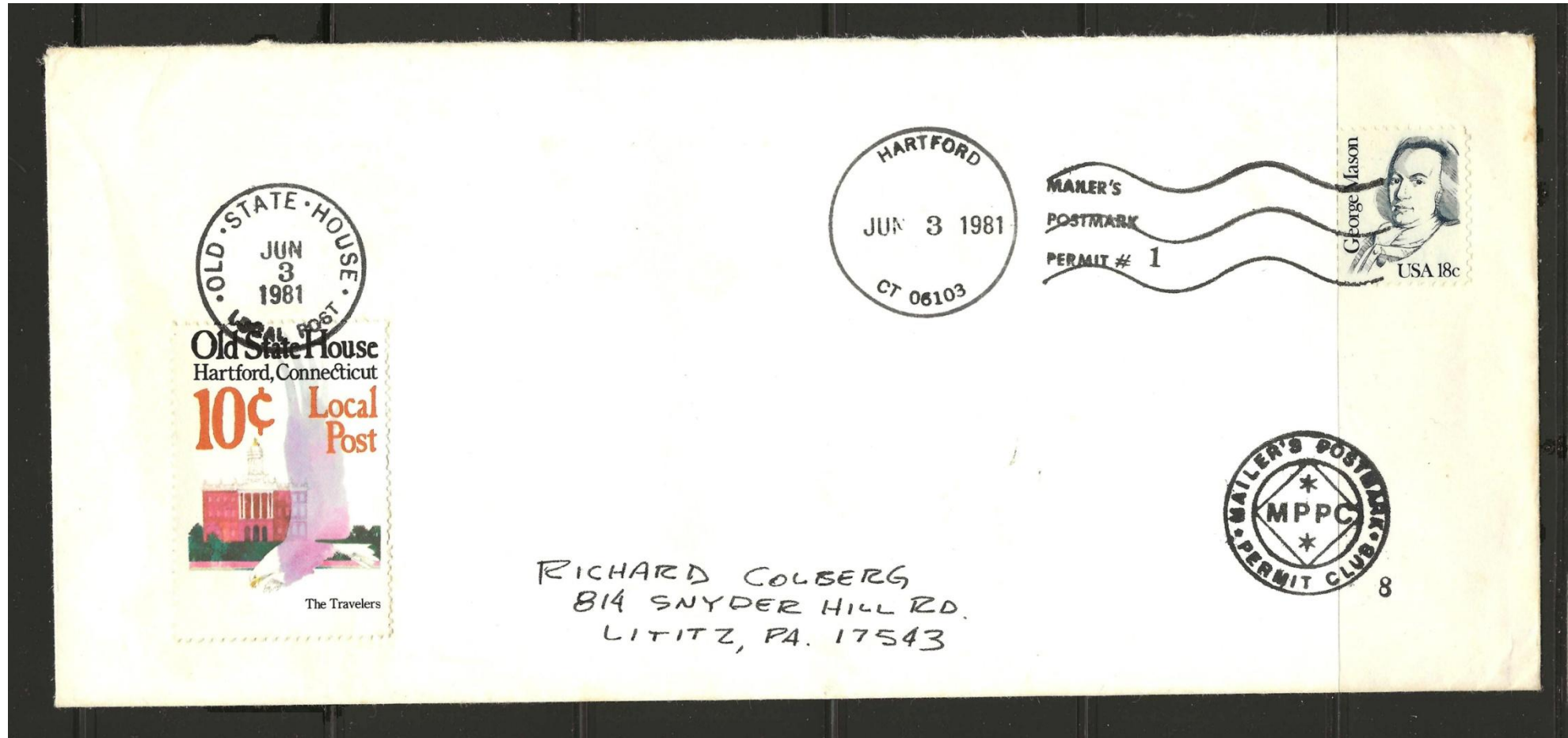
ISSUED JUNE 14, 1973

Proper U.S. postage must be affixed to all items to be handled by the Local Post.

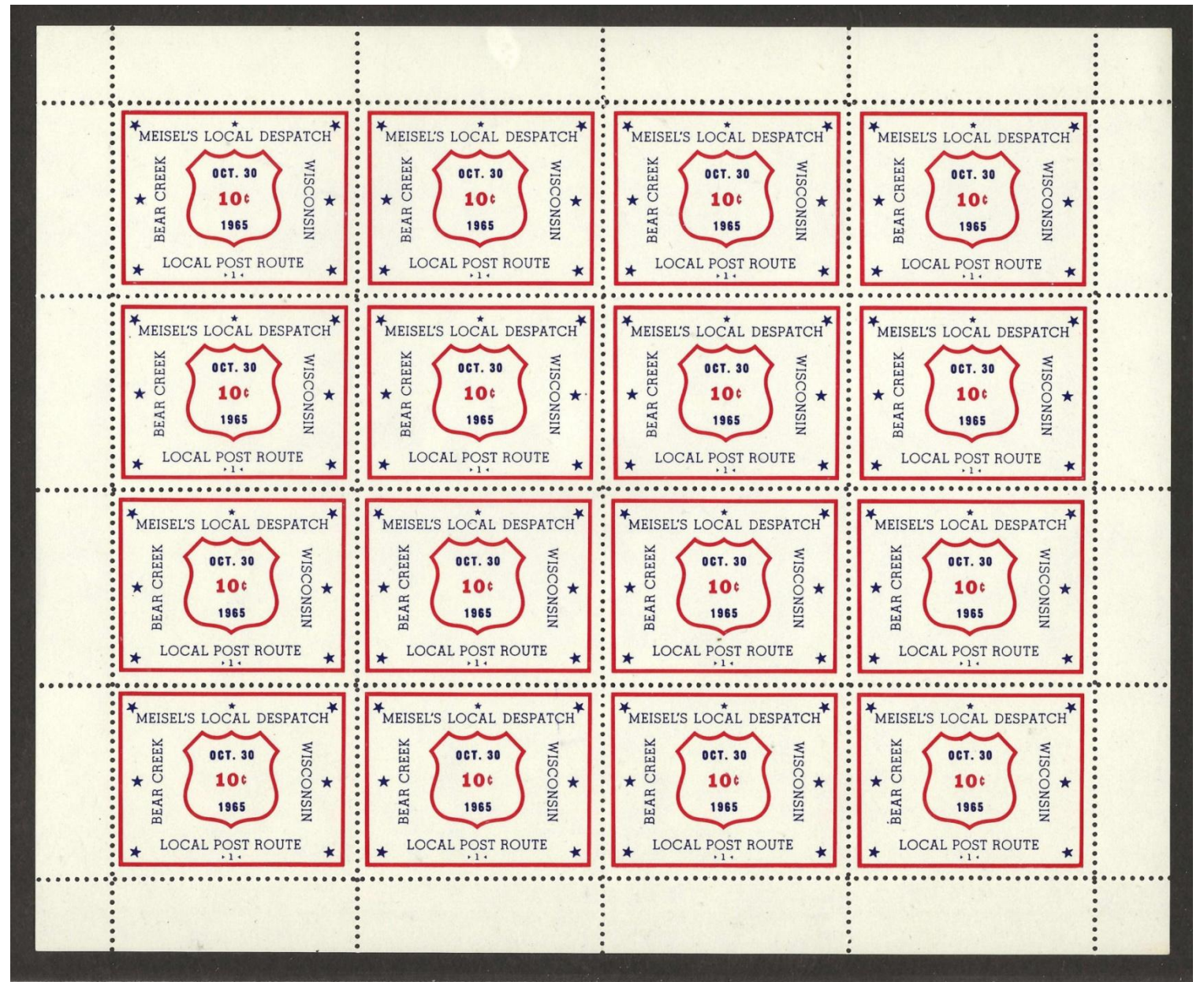
Notification of proper fees, dates of First Day, Last Day and other Covers is available for a self-addressed stamped envelope.

P. O. BOX "000"
GREENHURST, N. Y. 14742

Old State House Local Post



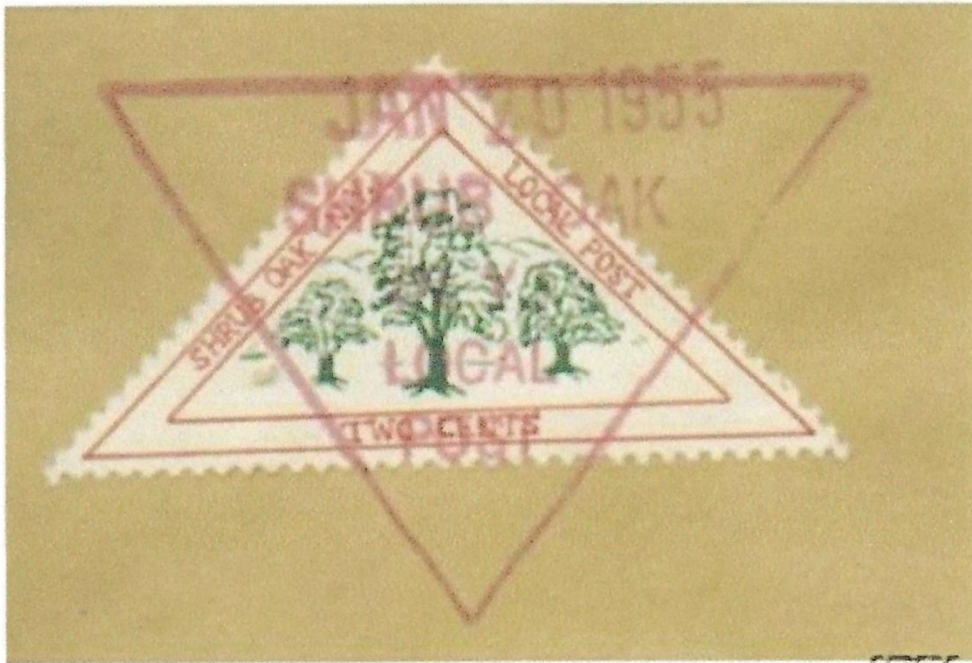
Meisel's Local Post – October 1965



Meisel's Local Post – November 1965



Shrub Oak Local Post



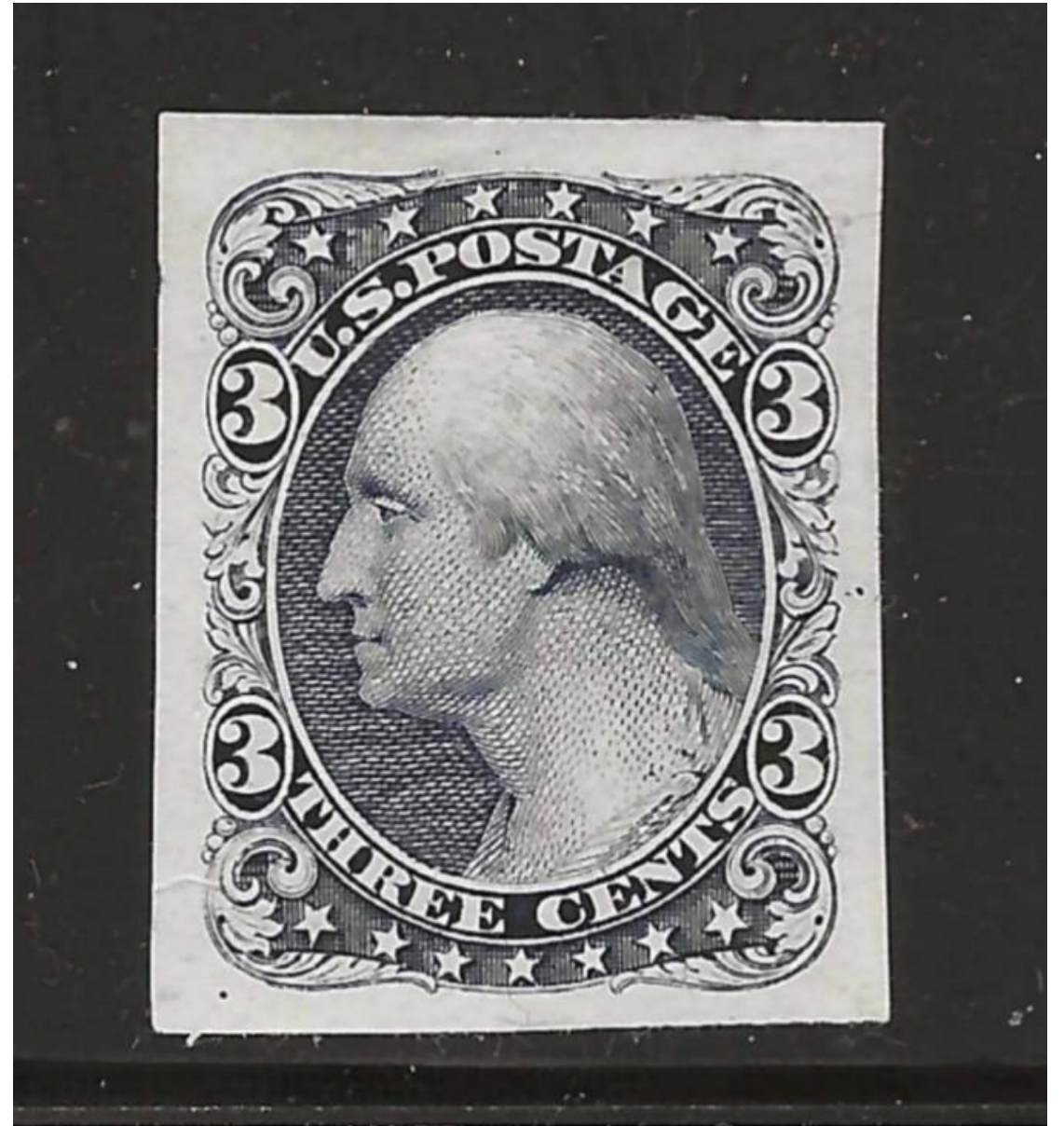
PP17C



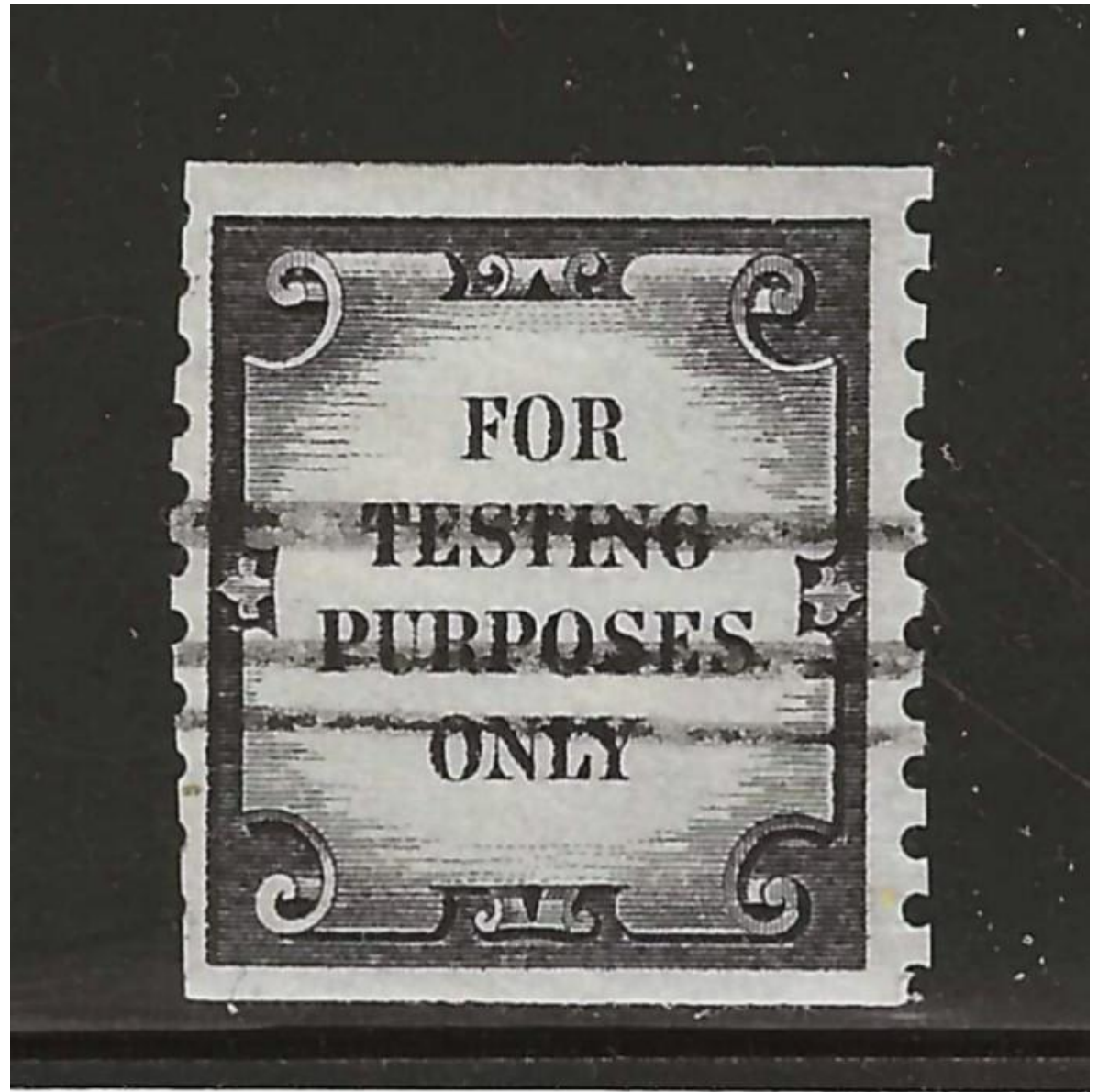
The Independent Postal Service of America IPSA



U. S. Essay Stamp



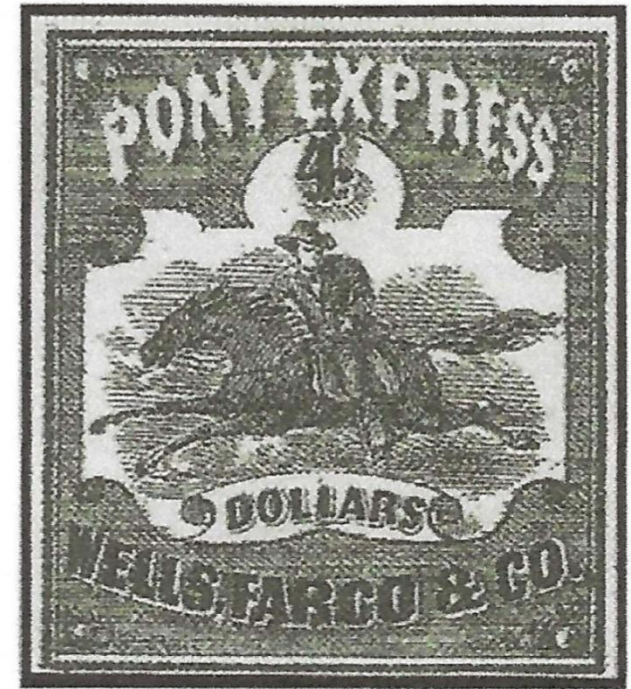
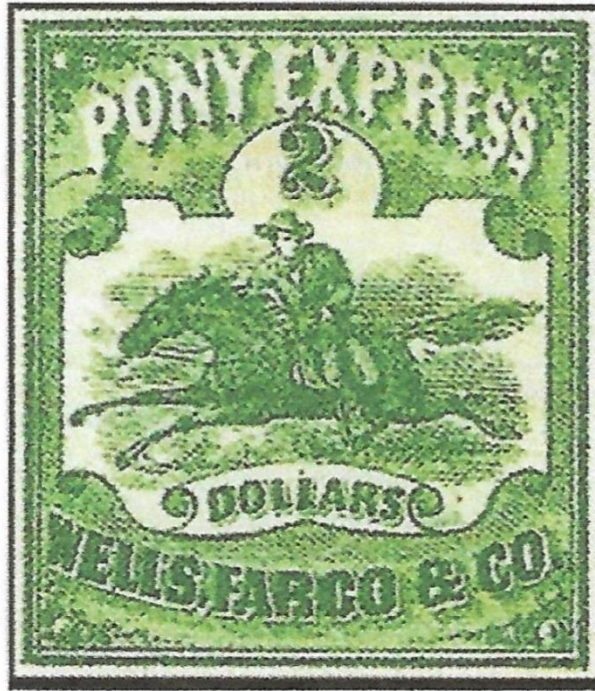
U. S. Test Stamp



Duck Stamps



The Pony Express



Postal Strike Stamp



Patriotic Labels

