

THE PATENT

Monthly newsletter of the Lebanon Stamp Collectors Club

July 2023
Number 48

A Tribute to Cornwall

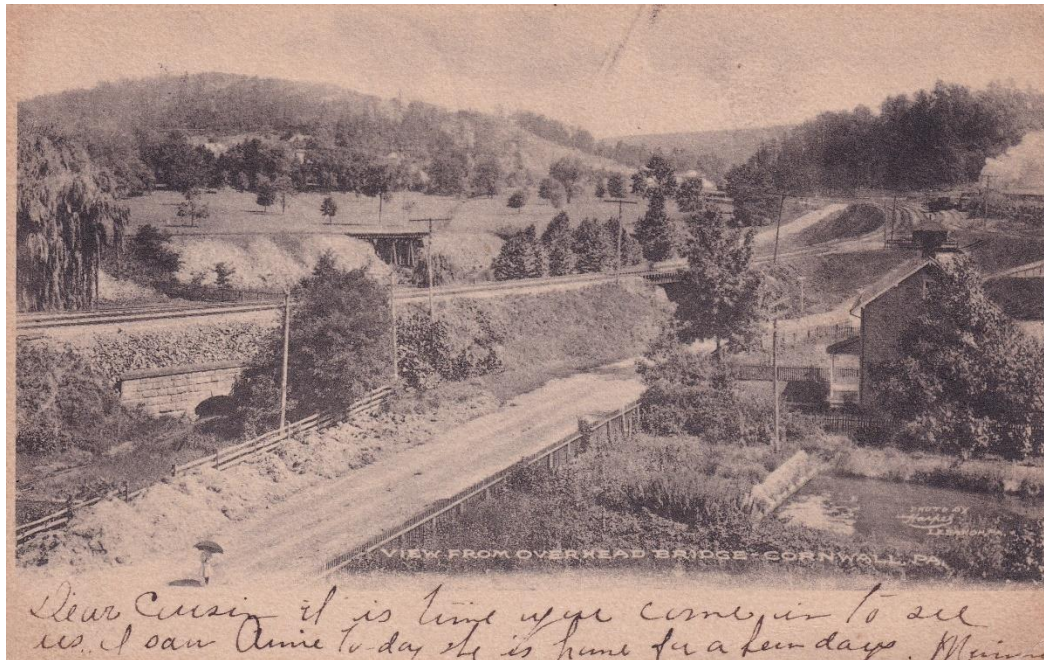
Cornwall is known for the colonial iron furnace that bears its name. Even with the recent encroachment of new housing construction, which has eaten away a significant number of its wooded acres, it is a place that retains the feel of a nineteenth century iron plantation.

“In the mid-nineteenth century, Cornwall’s iron plantation contained industrial, residential, and agricultural activities. Small villages were created for furnace workers and miners. These stone and brick structures were simple in style but sturdy in construction.” (Cornwallironfurnace.org). So sturdy, in fact, that people still live in quaint little neighborhoods of homes that housed employees while the furnace was in operation.



A lesser-known, but more prominently located, landmark in Cornwall is this arch bridge supporting the former Cornwall and Lebanon rail line. This sturdy structure is very recognizable to everyone who is familiar with Cornwall Borough. (Harpel of Lebanon sold a colorized postcard, produced in Germany, with the same photo as above.)

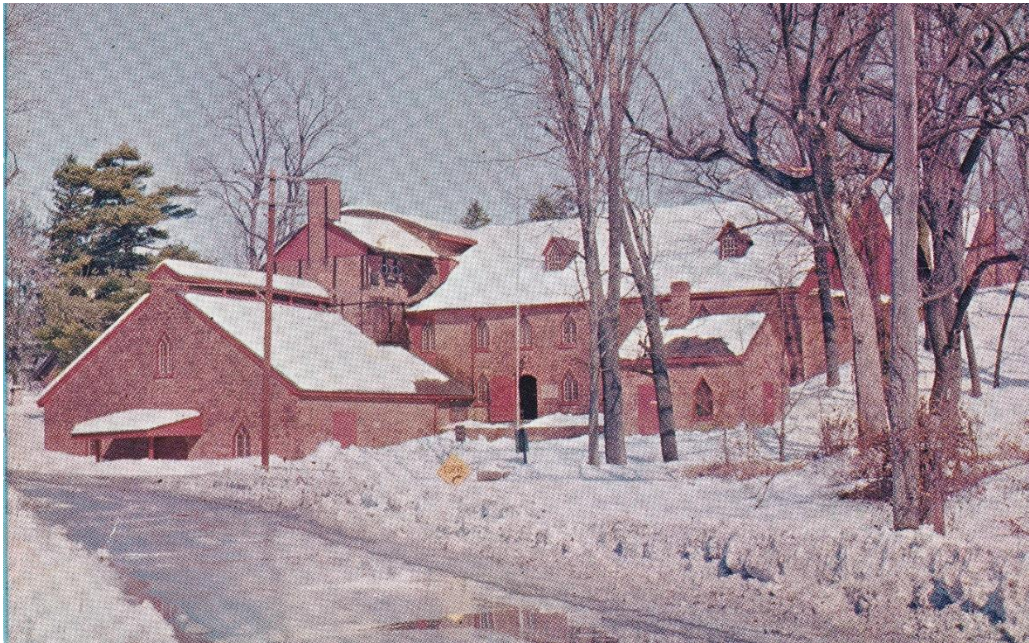
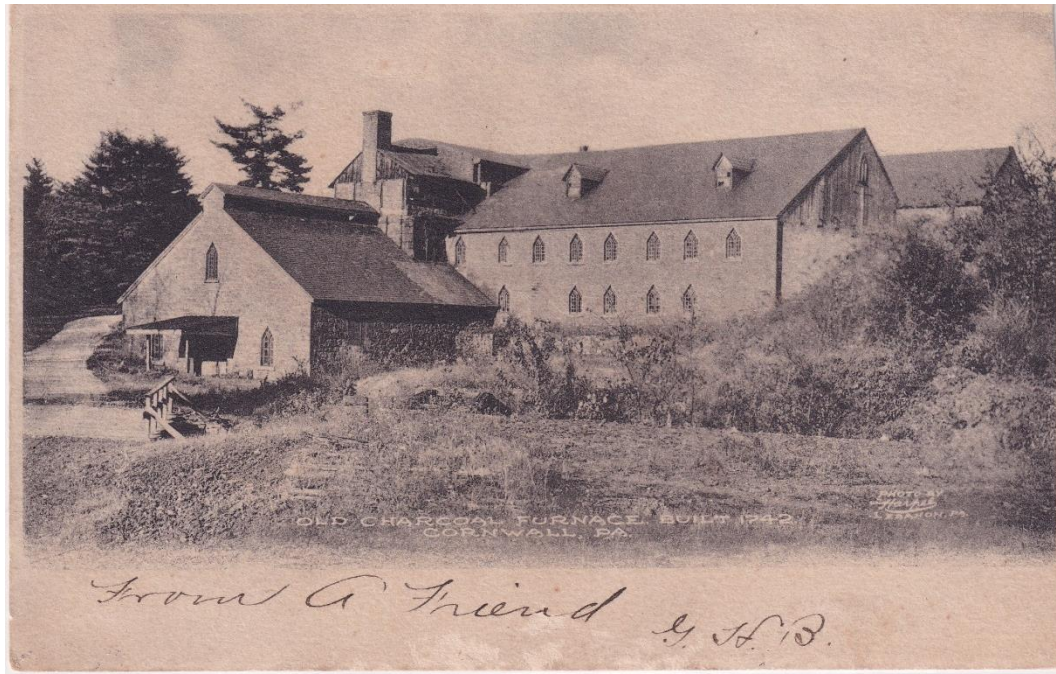
The old C&L rail line right of way the archway supports is now part of the Lebanon Valley Rails to Trails in Lebanon County.



This view from the rail road bridge in Cornwall, more than 120 years in the past, is much less recognizable than the stone archway is today. This card was mailed from Rexmont on October 27, 1905.



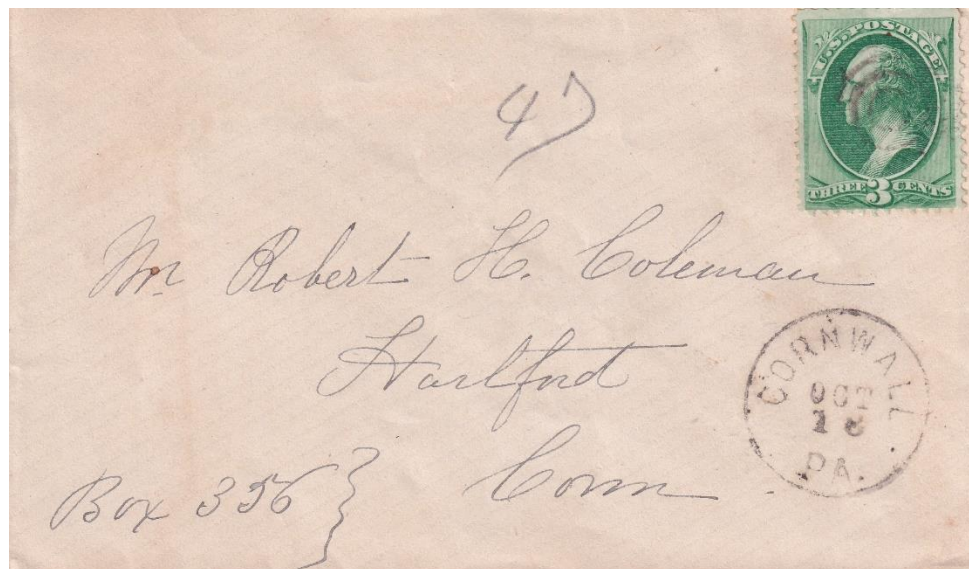
A view of the arch bridge in Cornwall from Burd Coleman Road.



Two postcard views of the historic Cornwall Iron Furnace, the best-preserved colonial ironworks in existence. The older of the two views was sent “to a friend” from Mt. Hope on October 30, 1905. The Cornwall Iron Furnace commenced production in 1742, two years after the founding of Lebanon. George Washington was a young lad of 10 that year. The Coleman family, who were the last owners of the operation, deeded the property to the Commonwealth of Pennsylvania in 1932, the 200th anniversary of Washington’s birth. (Wikipedia)



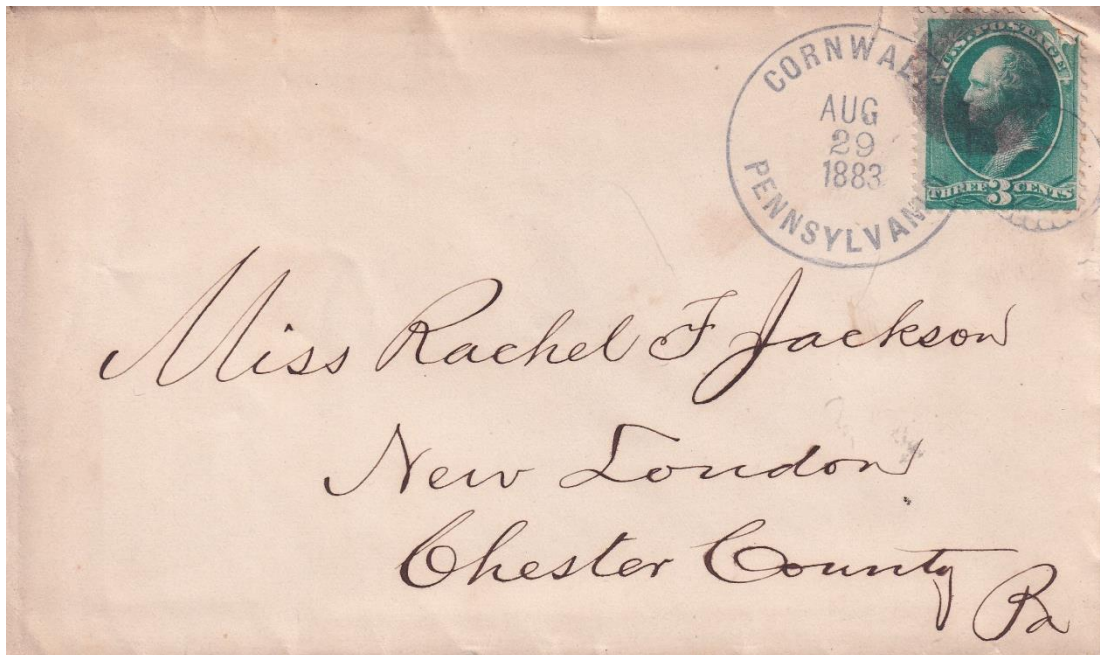
A letter to Robert Habersham Coleman, heir to the Coleman Iron fortune and namesake of Coleman's Park in Lebanon. The Coleman family was very successful in the iron business, and Robert's grandfather, also named Robert, was one of Pennsylvania's first millionaires.



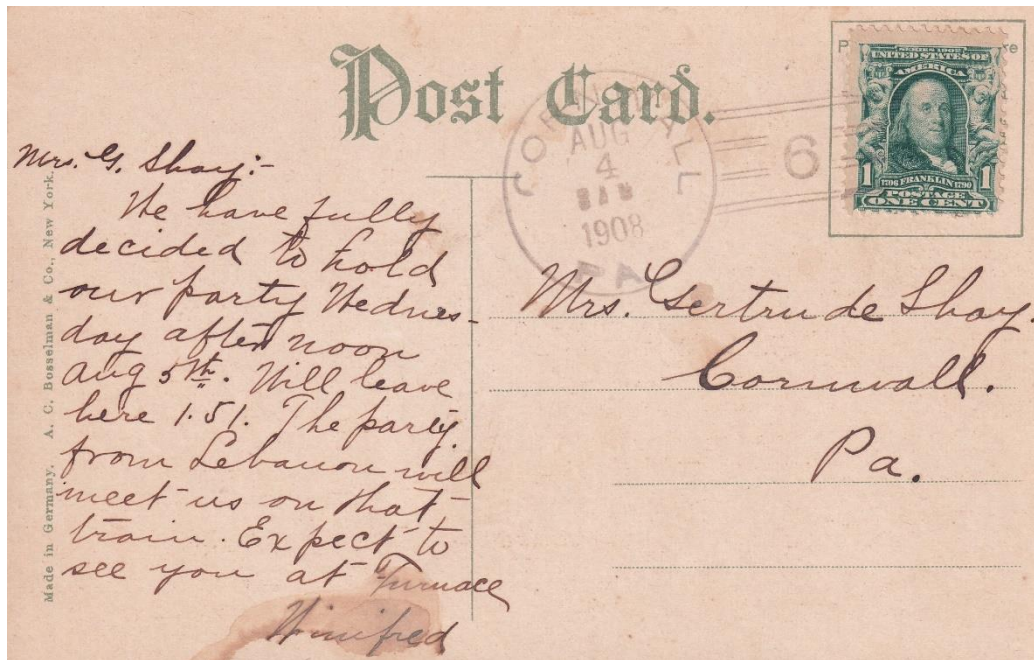
A letter from Cornwall's first family to one of their own. Robert Coleman studied at Trinity College in Hartford, Connecticut



A Cornwall receiving stamp from 1881



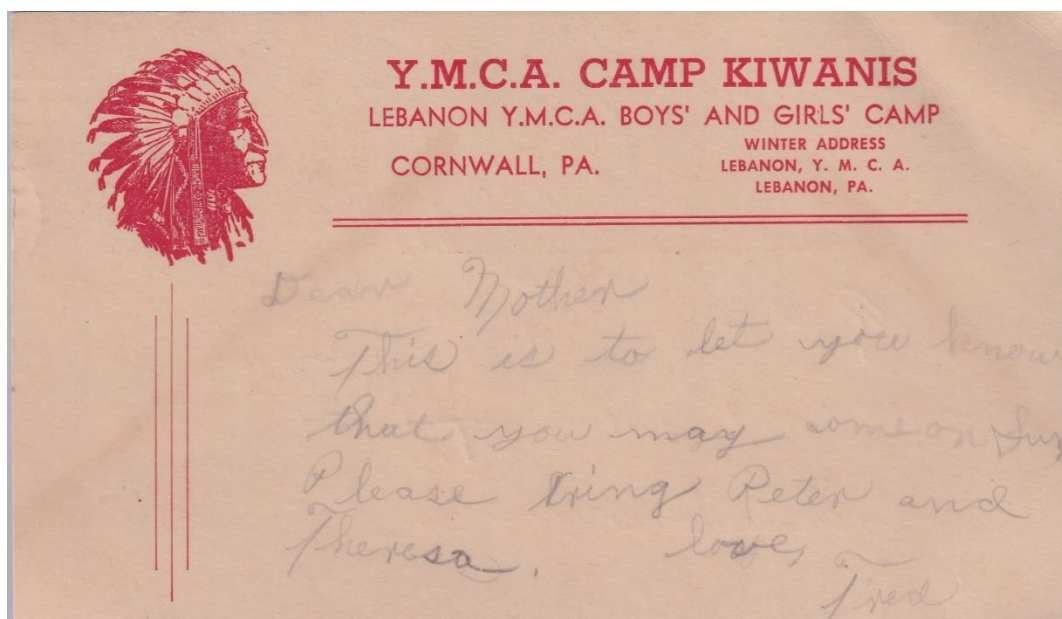
A crisp, bold, and well-struck Cornwall CDS from the summer of 1883



Before email, yes, before the telephone was available to most households, there was the postcard to quickly and reliably communicate with your neighbors



A postcard from Cornwall to Schaefferstown, via Richard



A postcard home from Y.M.C.A camp, postmarked on the evening of July 1, 1958, in Lebanon.

The June meeting of the Lebanon Stamp Collectors Club

Three members were present in June for the visit of one of our good friends, Mike Bach, of the Reading Stamp Collectors Club, who presented to us his collection of Swiss Bundesfeier postcards.

Mike's collection was started by his father in Germany, who was very close to his Swiss cousin. The two regularly exchanged postcards, and these special postcards were issued annually to celebrate Swiss National Day on August 1.

Mike's philatelic presentation was also a crash course in Swiss history. In 1291, three Forest Cantons formed a neutrality pact, to not go to war against others or with each other. They created and signed a federal charter at Des Rutli, a house on Lake Lucerne, which was a safe place where artists and writers met.

As the centuries progressed, the various parts that now make up Switzerland joined the union, until after the Napoleonic Wars Switzerland became its own, neutral, country, with thousands of local entities and seven to eight million people.

In 1891, to commemorate the 700th Anniversary of the first national charter, the Swiss declared August 1st a national holiday. It didn't become an official government holiday until 1994, but since then the nation has been able to enjoy the holiday with a day off from work.

An interesting side note about the presentation is that we were able to use the street view feature of Google maps to look at a house on Hebrank Street in Lancaster that one of the postcards was sent to back in the 1930s.

Coming up in July . . . Do you remember LEBPEX?

On July 18, Scott Ney will share the results of his compilation of LEBPEX show covers. The covers come up from time to time on eBay, but the acquisition of a large group of them from a member of the Philatelic Society of Lancaster County (who outbid him on a lot of central PA regional show covers) and from Lorrene Blauch, the wife of our late friend Glenn Blauch, have allowed him to compile a fairly comprehensive record of the show and its cachets.

Based on the available information, the first LEBPEX was held in 1973. The first edition of the LEBPEX show cover “catalog” will be posted on the LSCC’s home page, hosted by the Philatelic Society of Lancaster County, in October; a commemoration of shorts of the event’s golden anniversary.

This presentation will be a hybrid of the draft of the document, which will be presented on the screen in the meeting room at the library, and a binder containing the covers. Please bring any and all covers you may have to the meeting; you may have one that was not available to illustrate the document! Also bring your stories and memories, as this could be a fun time to remember the “old days” when the LSCC had its own stamp show and exhibition.

Calendar of Events

2023 Lebanon Stamp Collectors Club Meetings

Date	Presenter
July 18, 2023	LEBPEX show covers – a retrospective led by Scott Ney
August 15, 2023	Summertime Show and Tell
September 19, 2023	Open
October 17, 2023	Open
November 21, 2023	Scott Ney – A peek at the post-Great War Hyperinflation in Germany and Eastern Europe
December 19, 2023	Annual club dinner, location TBD

The PSLC Events Calendar is located at the following link:

[Philatelic Society of Lancaster County – Award-winning, non-profit community organization dedicated to promoting stamp and postal history collecting as a hobby for education and fun. \(lcpss-stamps.org\)](https://lcpss-stamps.org/)

The Lebanon Stamp Collectors Club thanks the Philatelic Society of Lancaster County for hosting our affiliate page, which is accessible by clicking the following link:

[The Lebanon Stamp Collectors Club – Philatelic Society of Lancaster County \(lcps-stamps.org\)](http://lcps-stamps.org)



The Lebanon Stamp Collectors Club Lebanon, PA 17042 - 17046