

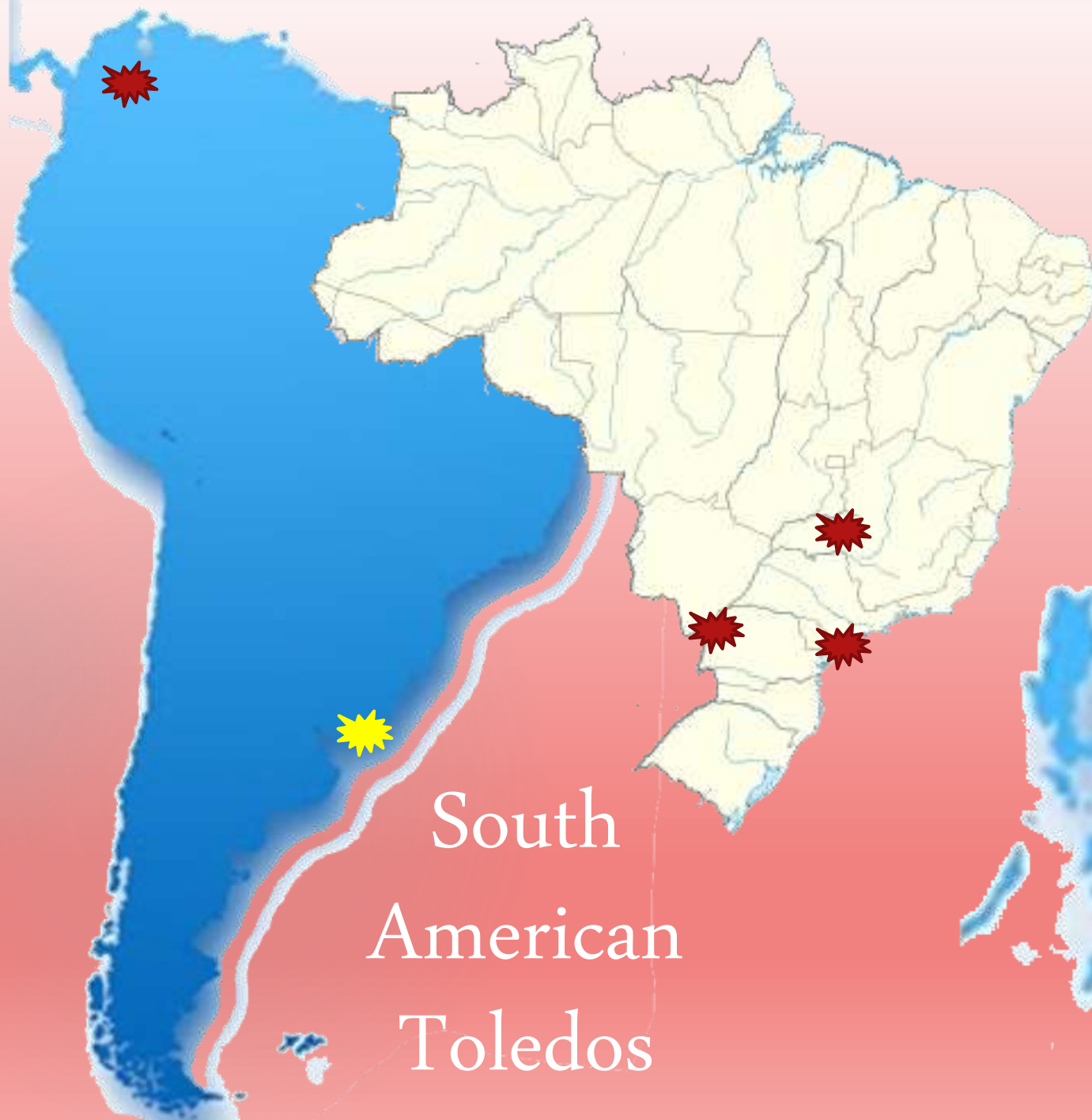
Wholly Toledo

*A Presentation for
The Philatelic
Society of
Lancaster County
August 24, 2022*

A
Philatelic
Overview
Of
The Toledos of the World

The Toledos of the World

- ▶ Toledo, State of Parana, Brazil
- ▶ Toledo, State of Minas Gerias, Brazil
- ▶ Pedro de Toledo, State of Sao Paulo, Brazil
- ▶ Toledo, Norte de Santander Department, Colombia
- ▶ Toledo, Spain
- ▶ Toledo, Ontario, Canada
- ▶ Toledo, Cebu Province, Philippines
- ▶ Toledo, Canelones Department, Uruguay



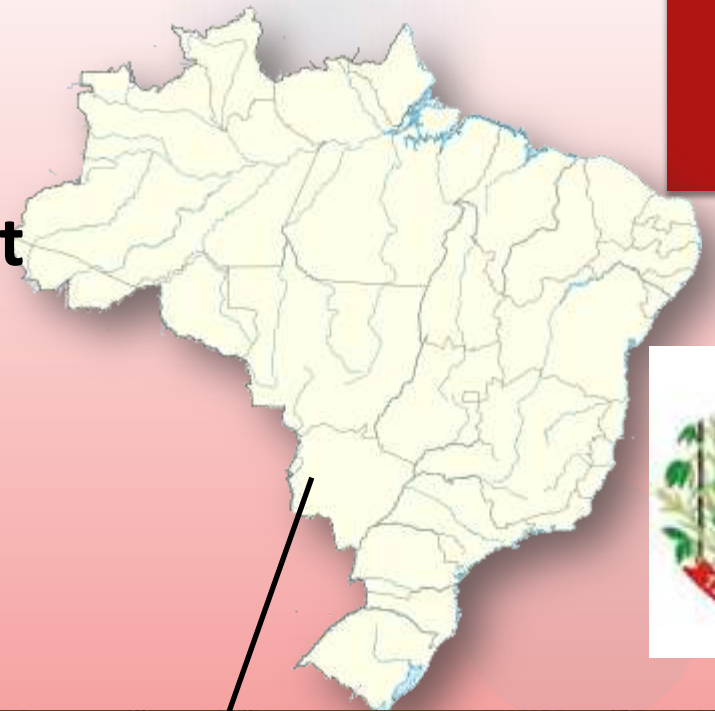
South
American
Toledos



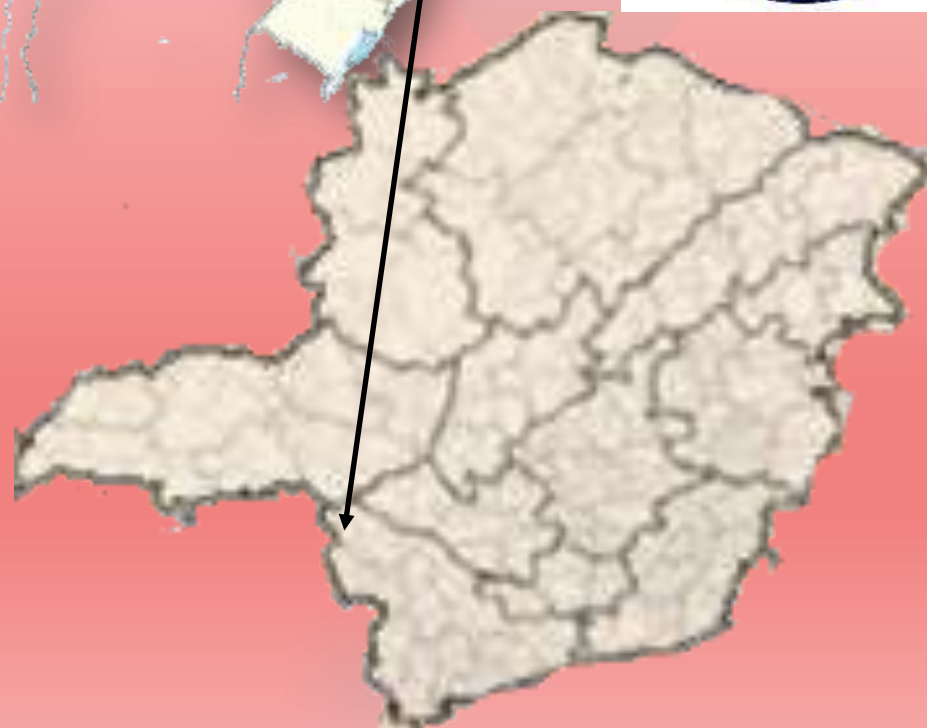
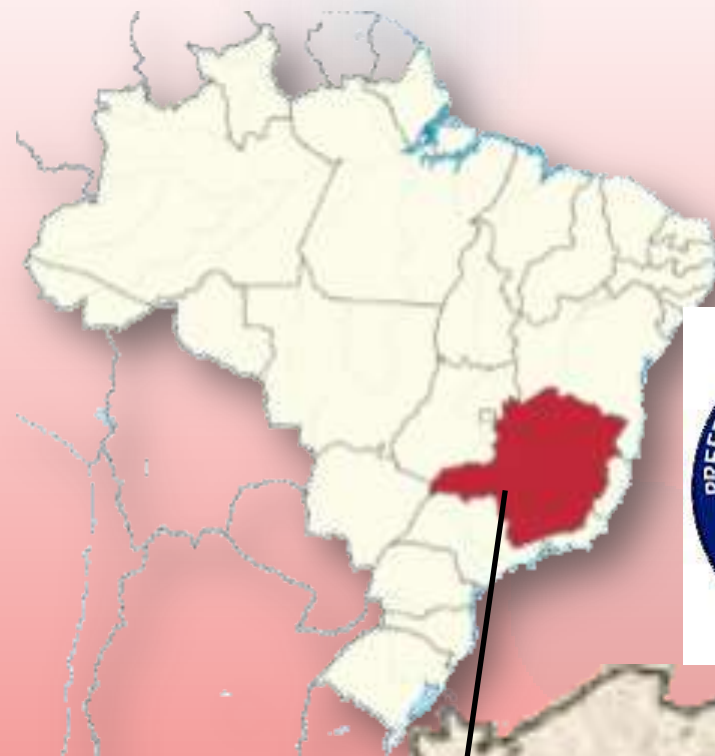
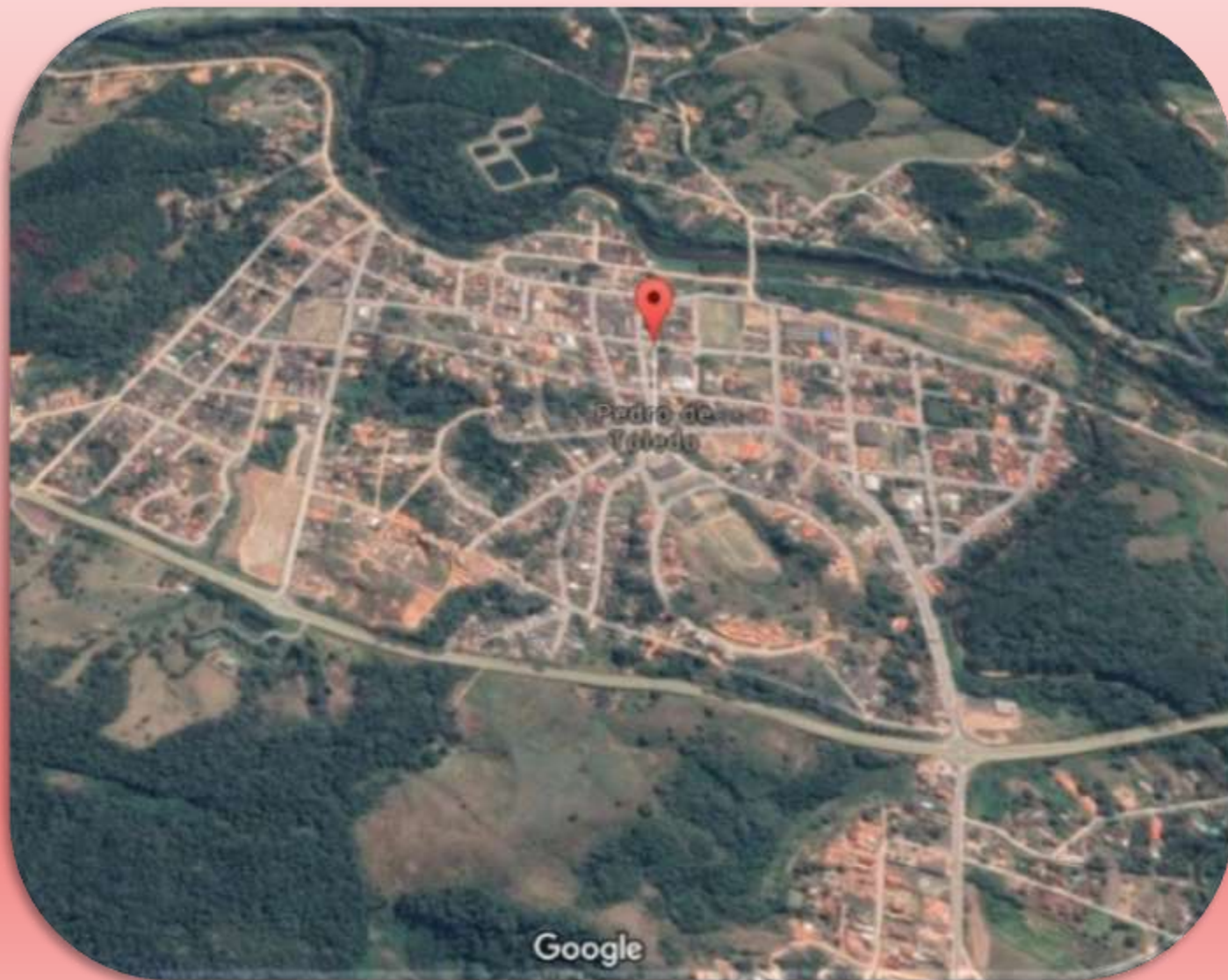
Spain
and
Philippine
Toledos

Toledo, State of Parana, Brazil

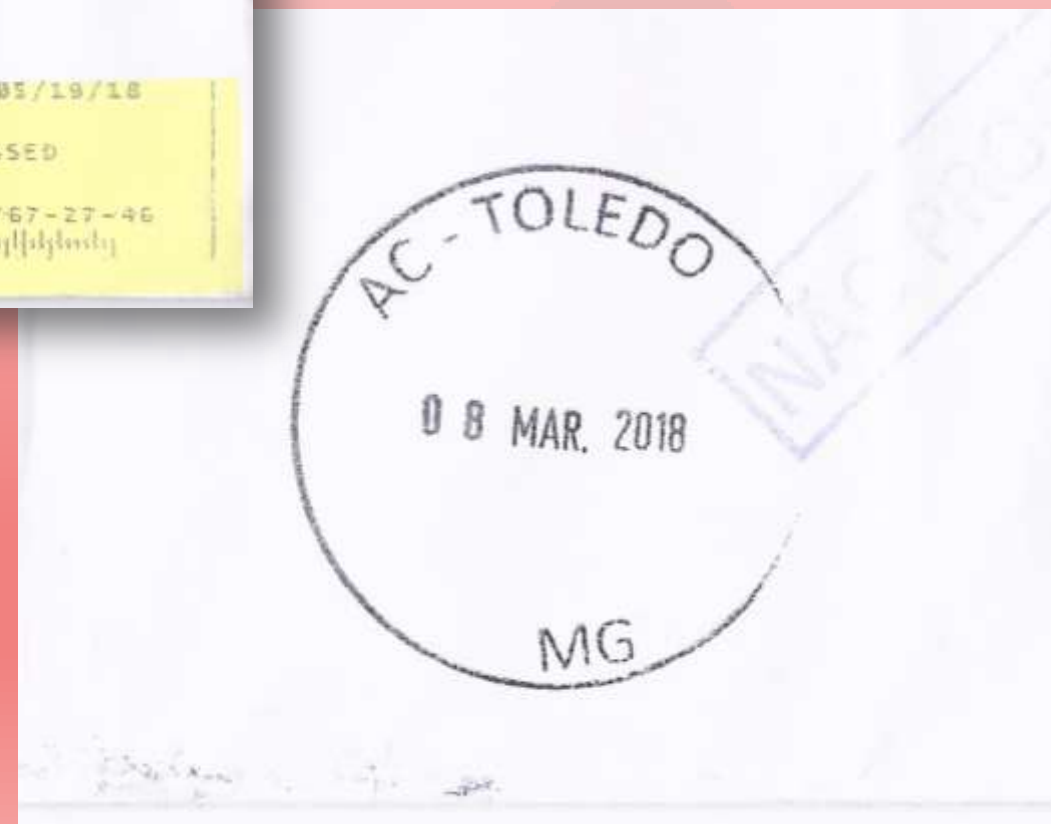
Toledo, State of Parana,
is a region of recent settlement, receiving its first
residents in 1946.



Toledo, State of Minas Gerais, Brazil



Toledo, State of Minas Geras, Brazil



Pedro de Toledo, State of Sao Paulo, Brazil



**Scan of 100 Reis
Edwardo Wandenkolk
Issue of 1908
With Toledo cancel
of 16 Sep 1912**



**Scan of 200 Reis
Aviation Issue of 1920
With Toledo cancel
of unknown date**



**Scan of 200 Reis
Manuel Deodoro
Da Fonseca
Issue of 1906
With Toledo cancel
of 9 Apr 1909**



**20 and 40
Cruzeiro
Agriculture
Issue of 1947-1954
(Type of 1941-1941)
With Toledo cancel
of 15 Dec 1953**



Toledo, Ontario, Canada



**1891 Leeds County,
Ontario
With location of
Toledo**

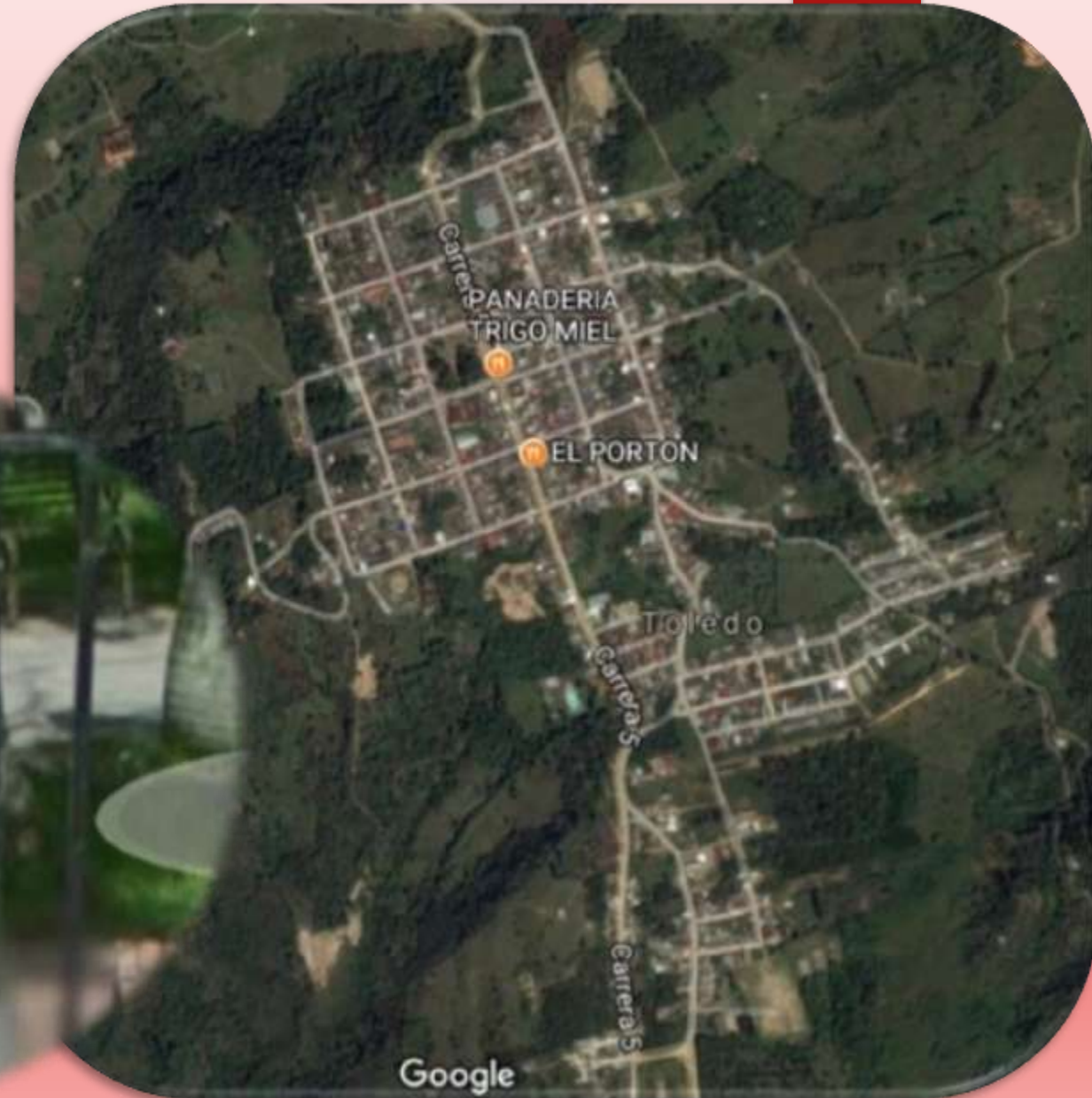




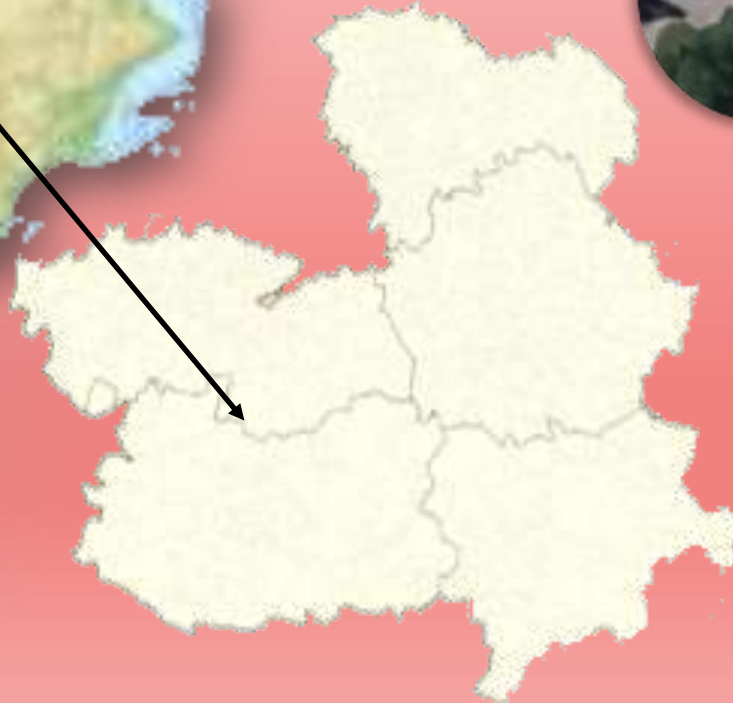
Pictured Right is
an aerial
view of
Toledo, Ontario



Toledo, Norte de Santander Department, Colombia



Toledo, Spain



Cover here was sent from Toledo to Madrid on May 4th, 1851. It carries a red 28mm CDS with a 17mm circular center which contains date with day on top, month middle, and year on bottom.



Toledo, Spain

Displayed here are two examples of Toledo, Spain postal markings of the early 1870's.

Both are 20 mm double circles. First cover, of August 18, shows the year date "71" in the dial while the second of November 13, shows no year date.



The Toledos of the World

- ❖ Toledo, Alabama
- ❖ Toledo, Arkansas
- ❖ Toledo, Colorado
- ❖ Toledo, Florida
- ❖ Toledo, Georgia
- ❖ Toledo, Illinois
 - ❖ Alexander County
- ❖ Toledo, Illinois
 - ❖ Cumberland County
- ❖ Toledo, Illinois
 - ❖ Union County
- ❖ Toledo, Indiana
- ❖ Toledo, Iowa
- ❖ Toledo, Kansas
- ❖ Toledo, Kentucky
 - ❖ Metcalfe County
- ❖ Toledo, Kentucky
 - ❖ Pulaski County
- ❖ Toledo, Louisiana
- ❖ Toledo, Michigan Territory
- ❖ Toledo Beach, Michigan
- ❖ Toledo, Mississippi
- ❖ Toledo, Missouri
 - ❖ Calloway County
- ❖ Toledo, Missouri
 - ❖ Henry County
- ❖ Toledo, Missouri
 - ❖ Ozark County
- ❖ Toledo, North Carolina
 - ❖ Rutherford County
- ❖ Toledo, North Carolina
 - ❖ Transylvania County
- ❖ Toledo, North Carolina
 - ❖ Yancey County
- ❖ Toledo, Ohio
- ❖ East Toledo, Ohio
- ❖ South Toledo, Ohio
 - ❖ (Maumee)
- ❖ West Toledo, Ohio
- ❖ Toledo, Oregon
- ❖ Toledo, Pennsylvania
- ❖ Toledo, Texas
 - ❖ Fayette County
- ❖ Toledo, Texas
 - ❖ Newton County
- ❖ Toledo, Washington
- ❖ Toledo, West Virginia
- ❖ Toledo, Montana

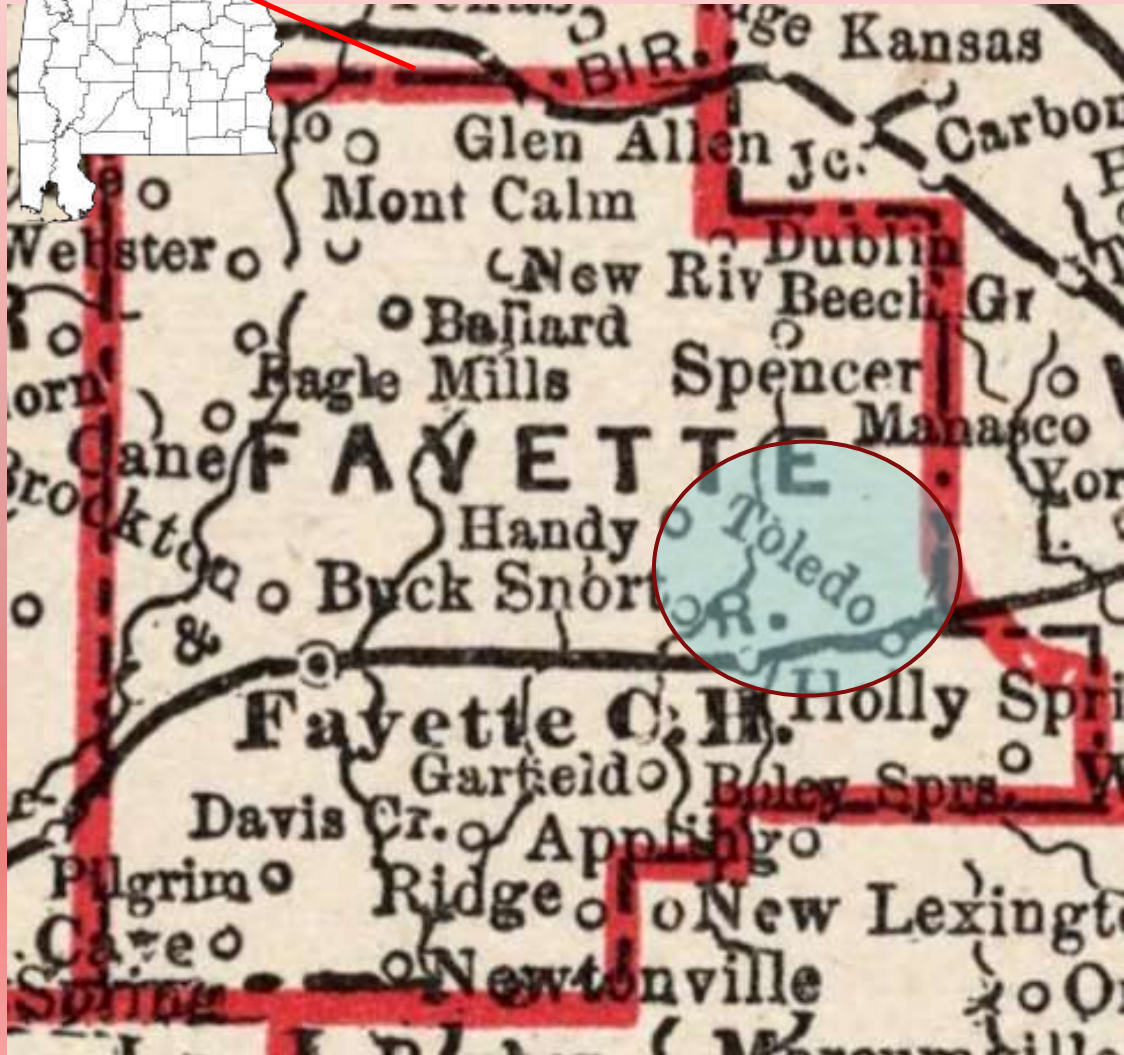
A map of North America with a light blue background and a white outline of the continent. The map is overlaid with numerous star markers. Most stars are red, while one star in the upper left is yellow. The stars are distributed across the continent, with a higher concentration in the eastern half. The text "North American Toledos" is written in a purple serif font on the left side of the map.

North American Toledos

Toledo, Alabama



Located in Fayette County and opened its post office on March 1, 1876.



1893 Fayette County,
Alabama map with Toledo

**Toledo, Alabama manuscript postmark
March 13, 1915**

Toledo Ala
March 13 15

**Fayette, County, Alabama page in
National Archives' "Record of Postmaster
Appointments 1832 to
September 30, 1971"**

**Hough G. Amenson shown as 1st
and only postmaster for Toledo.**

His
Rec'd
see below

Stough
do
do
Toledo
do

Jacob H. Stough 14 Feb 89
Rufus M. Lee
His mail to Shipley
Hough G. Amenson
Dis July 31, 1915 M to Berry

14 Feb 89
1 Apr 03
24 Jan 02
15 Dec
18 Nov 05
18 Apr 73

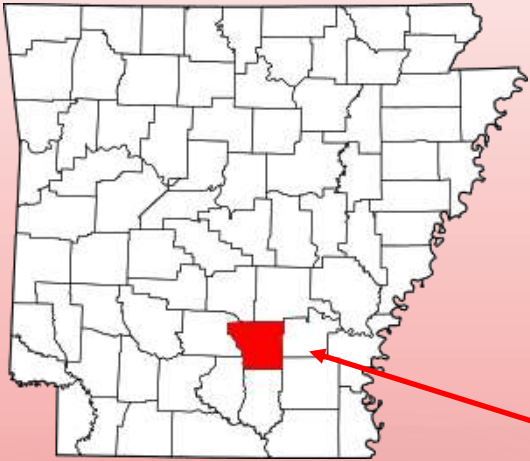
Stephen H. Ford
George R. Kizziah
John H. Stough

His mail to Winfield

29 Mar 1900
13 Mar 95
16 Sep 78

Terrell M. Reese

Toledo, Arkansas



**Cleveland County,
Arkansas
with location of
Toledo**



Toledo, Arkansas

February 19, 1898
Toledo, Arkansas
CDS postmark



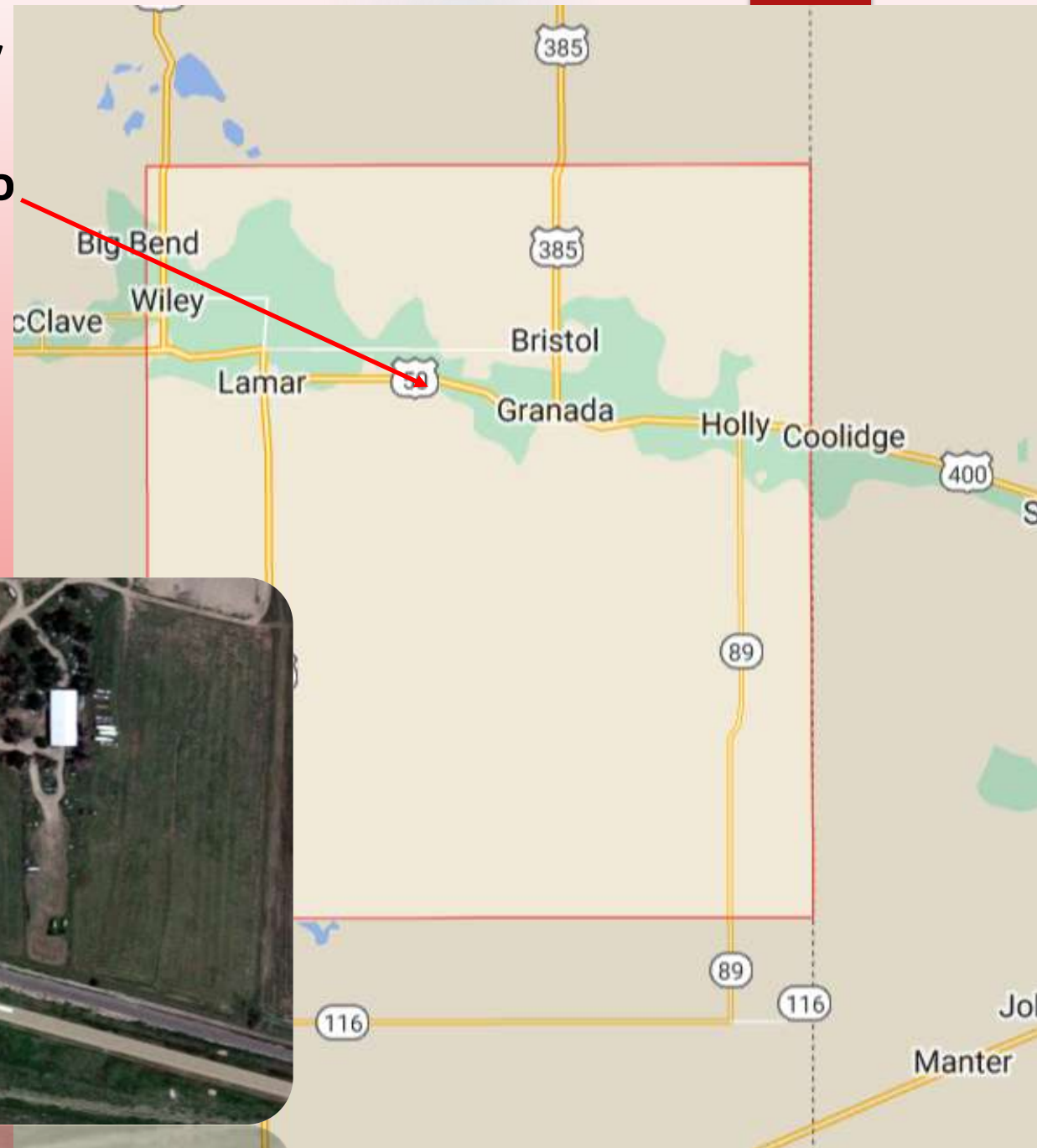
Town slowly grew and, by 1880, had a population of 143 and was soon home to several mercantile stores, three hotels, four blacksmiths, four doctors, three lawyers, four druggists, and two saloons. Many local men were employed at one of three area sawmills. The first newspaper, the *Toledo Blade*.

Town began to decline when citizens refused to give railroad a right-of-way. Tracks were constructed two miles north. April 11, 1891 the county seat was moved to Rison and it began to die .



Toledo, Colorado

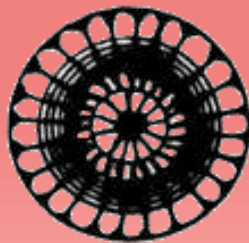
**Prowers County
Colorado
Toledo**



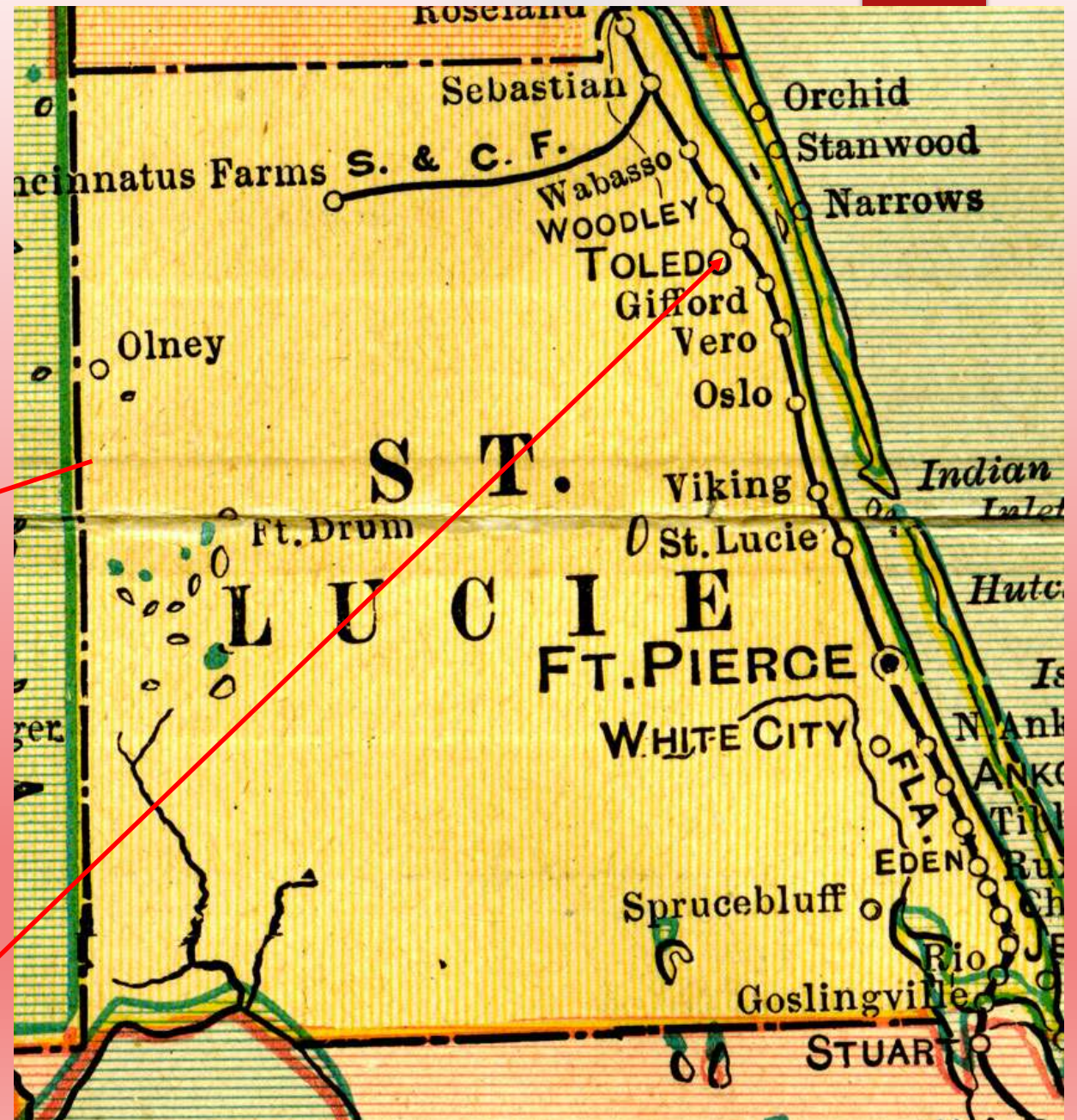
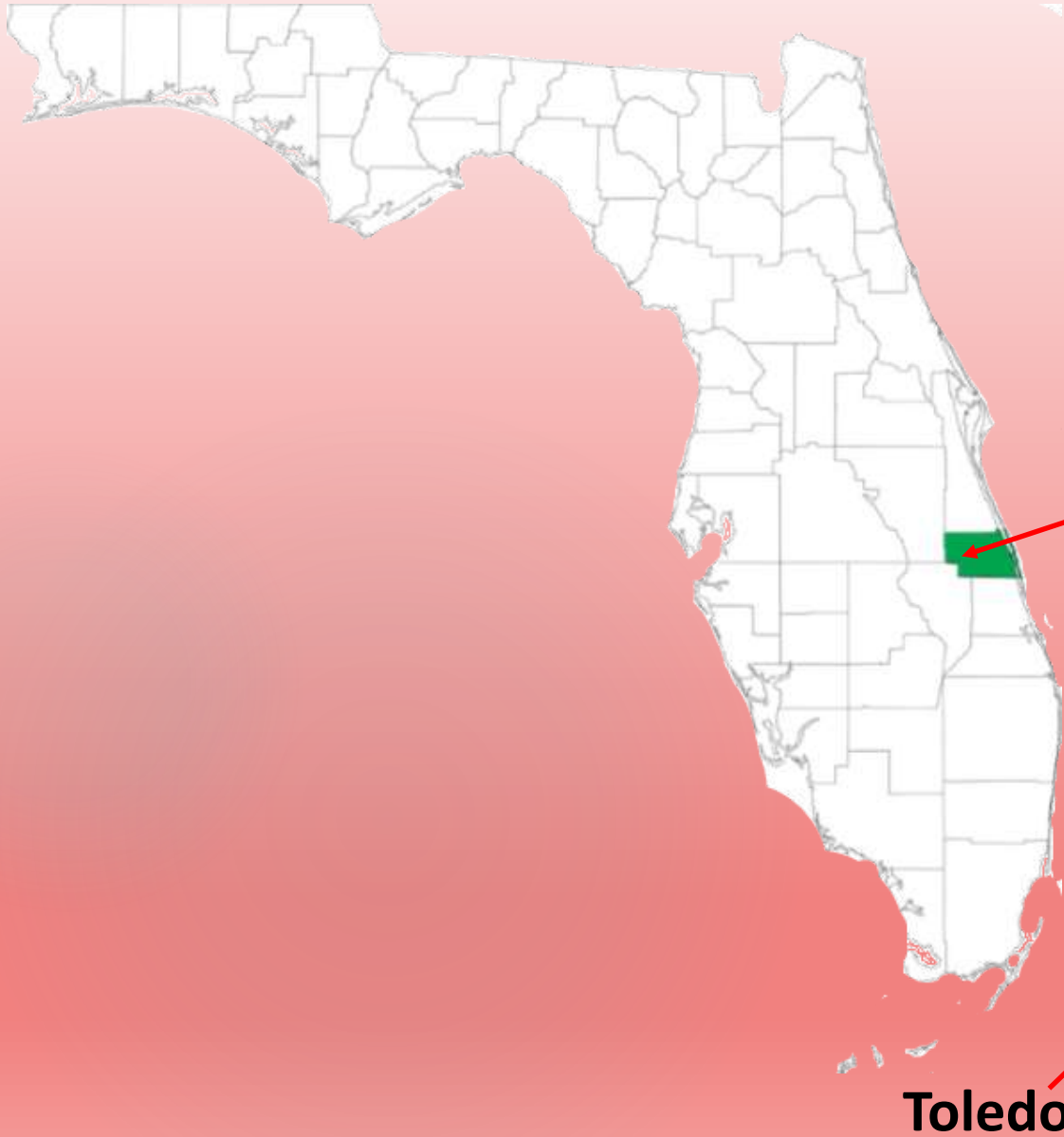
**Aerial view of Prowers County
where Toledo was located.**



Toledo, Colorado



Toledo, Florida



Toledo, Florida

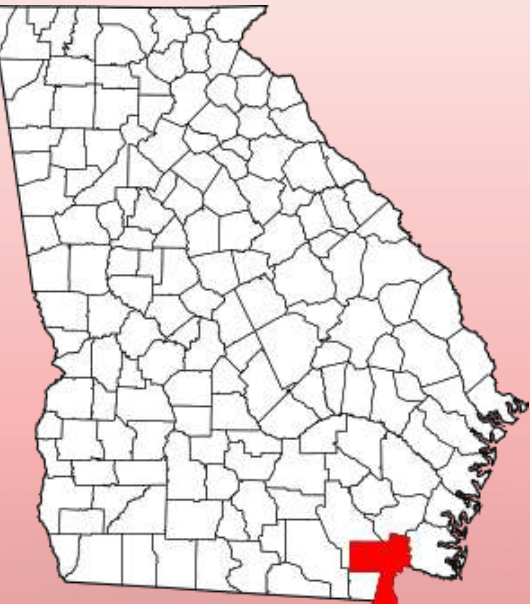
**Site of Toledo, Florida's
Post Office today**



Two examples of Toledo, Florida postmarks.



Toledo, Georgia



Charlton County



Toledo

Ariel view of location where Toledo, Georgia was located.



Toledo, Georgia



Established in 1895 with Richard E. Small postmaster. Closed in 1930.

No postmarks have been located from this office.

Post Office Department,
OFFICE OF THE FOURTH ASSISTANT POSTMASTER GENERAL,
APPOINTMENT DIVISION,
WASHINGTON, D. C. Oct 16 1894

Sir: If the Postmaster General decides upon the application for the establishment of a post office at Ely, it will be necessary for you to carefully answer the subjoined questions, get a neighboring postmaster to certify to the correctness of the answers, and return the location paper to the Department, addressed to me. If the site selected for the proposed office should not be on any mail route now under contract, only a "Special Office" can be established there, to be supplied with mail from some convenient point on the nearest mail route by a special carrier (see section 733, Postal Laws and Regulations of 1879), for which service a sum equal to two-thirds of the amount of the salary of the postmaster at such office will be paid by the Department.

You should inform the contractor, or person performing service for him, of this application, and require him to execute the inclosed certificate as to the practicability of supplying the proposed office with mail, and return the same to the Department.

Very respectfully,
N. C. Macfarland
Fourth Assistant Postmaster General

To Mr. R. L. Brooks
care of the Postmaster of Traders Hill, who will please forward to him.

STATEMENT. Toledo

The proposed office to be called.

Select a short name for the proposed office, which, when written, will not resemble the name of any other post office in the State.

It will be situated in the East 143 quarter of Section 1, St. Johns Township (North or South) South Range (East or West) Charlton in the County of Charlton State of Georgia

It will be on or near route No. Traders Hill being the route from Traders Hill to Traders Hill

Will it be directly on the route? Yes by Traders Hill from Traders Hill to Traders Hill

If not, how far from it? Yes Traders Hill from Traders Hill to Traders Hill

If not on any route, is a "Special Office" wanted? Yes To be supplied from Traders Hill

The name of the nearest office to the proposed one, on the route, is Traders Hill

its distance is Traders Hill miles in a Traders Hill direction from the proposed office.

The name of the nearest office, on the other side, is Traders Hill

its distance is Traders Hill miles in a Traders Hill direction from the proposed office.

The name of the other nearest office in the proposed area is Traders Hill

its distance by the most direct road is Traders Hill miles in a Traders Hill direction from the proposed office.

The name of the most prominent river near it is St. Marys

The name of the nearest creek is Traders Hill

The proposed office will be Traders Hill miles from said river, on the Traders Hill side of it, and will be Traders Hill miles from said nearest creek, on the Traders Hill side of it.

The name of the nearest railroad is Traders Hill

If on the line of or near a railroad, on which side will the office be located? how far from the track? and what is or will be, the name of the station? Traders Hill

If it be a village, state the number of inhabitants? Traders Hill

Also, the population to be supplied by the proposed office? Traders Hill

A diagram, or sketch from a map, showing the position of the proposed new office, with neighboring river or creek, roads, and other post offices, towns, or villages near it, will be useful, and is therefore desired.

A correct map of the locality might be furnished by the county surveyor, but this must be without expense to the Post Office Department.

ALSO, I CERTIFY to be correct and true, according to the best of my knowledge and belief, this Traders Hill day of Traders Hill 1894 (If "Sign full name.") Traders Hill Proposed P. M.

I CERTIFY that I have examined the foregoing statement, and that it is correct and true, to the best of my knowledge and belief.

Traders Hill
Postmaster of Traders Hill

(OVER)

Toledo, Illinois - Alexander County

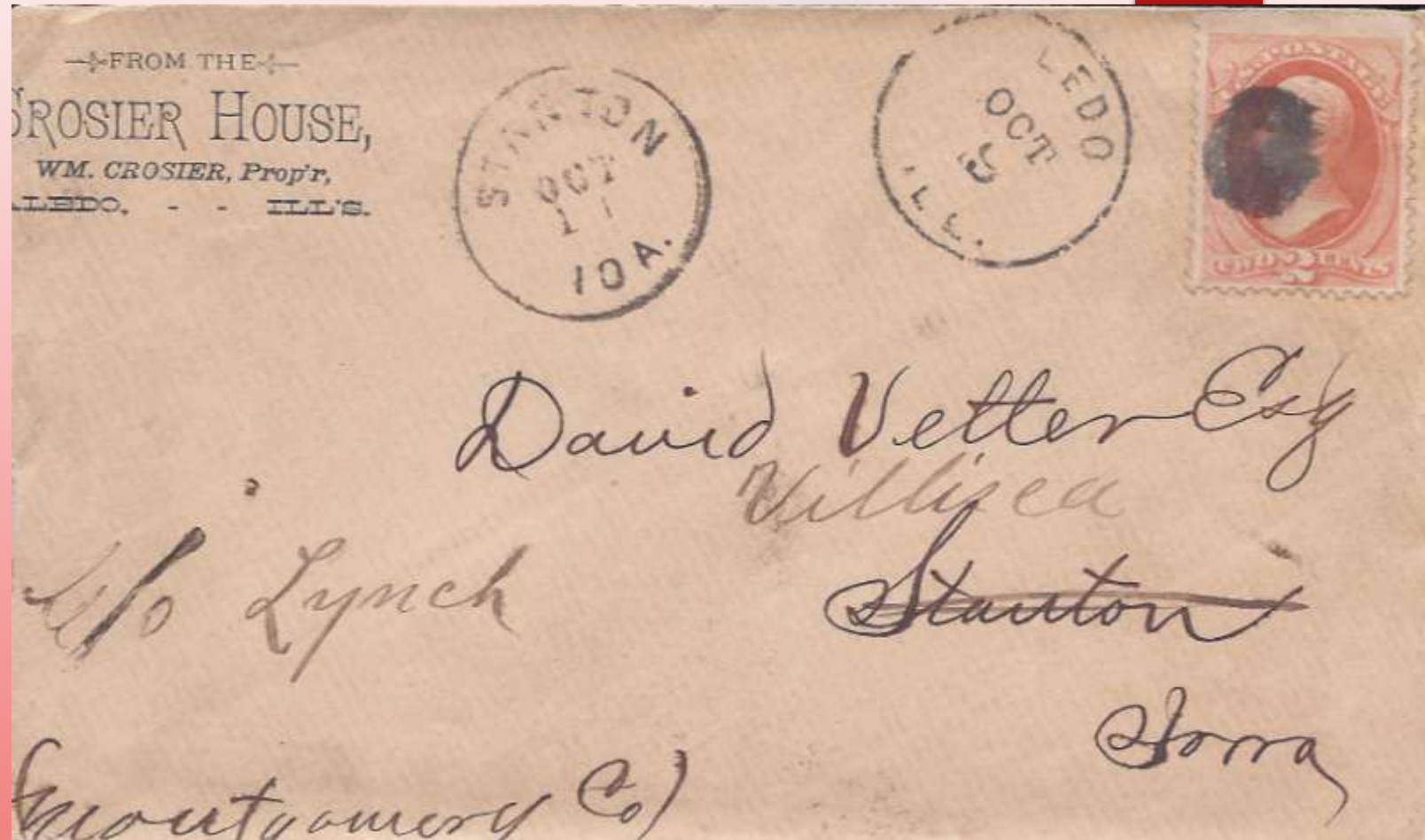


1878 Alexander
County, map
with Toledo



Ariel view of location of Toledo,
today know as Elco

**Alexander County, Illinois
"Report of Postmaster
Appointment"
seen here shows
appointment
of Samuel Briley as first
postmaster followed by
Joseph W. Renfro
February 28, 1876.**



Chas Hazlewood	Salmon Hazlewood	30 Sep 73	Samuel Briley	7 Jan'y 73
Chas Toledo	Samuel Briley	21 Jan'y 74	for W. Renfro	28 Feb'y 1876
+ East Cape Girardeau	Alfred H. Mc Gee	9 July 74	Richard A. Edmundson	21 June 75

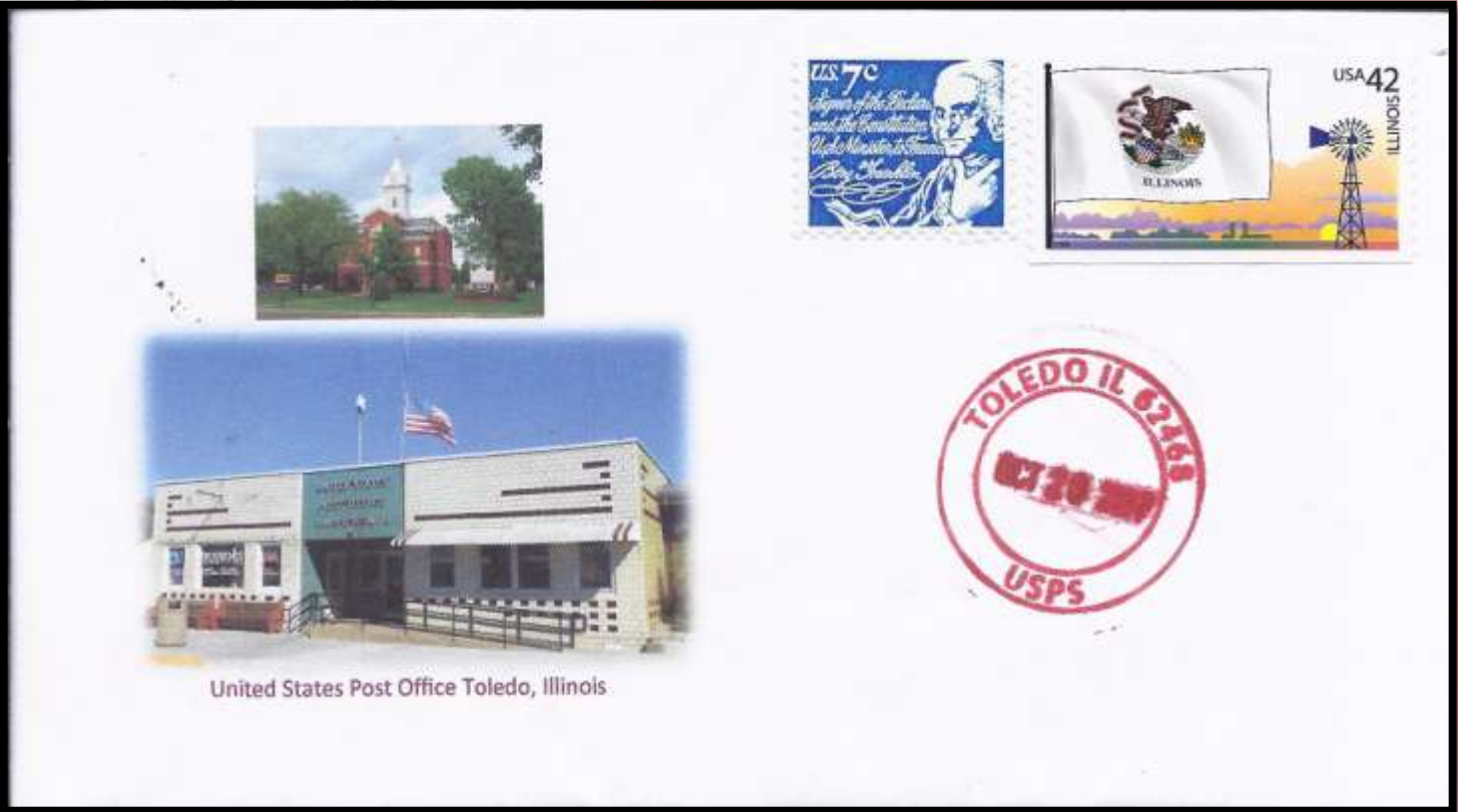
Toledo, Illinois - Cumberland County

**Established September 1, 1881
and is still operating.**

**Cumberland County, Illinois
With location of Toledo**



Toledo, Illinois - Cumberland County



Toledo, Illinois - Union County



1865 Union County, Illinois
map w/location of Toledo



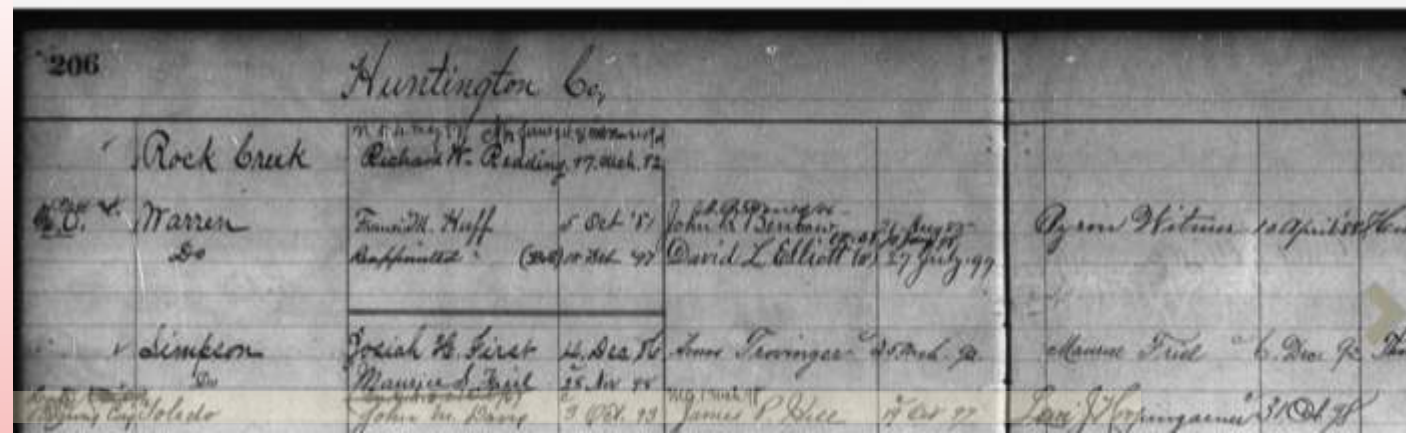
Ariel view of location of
Toledo, in Union County
today know as Alto Pass



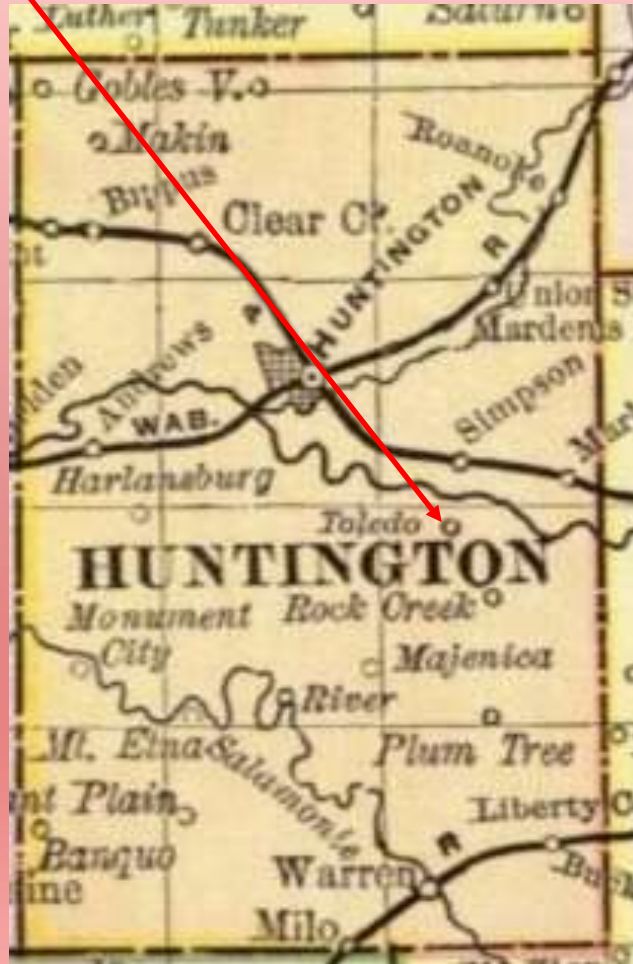
Toledo, Indiana



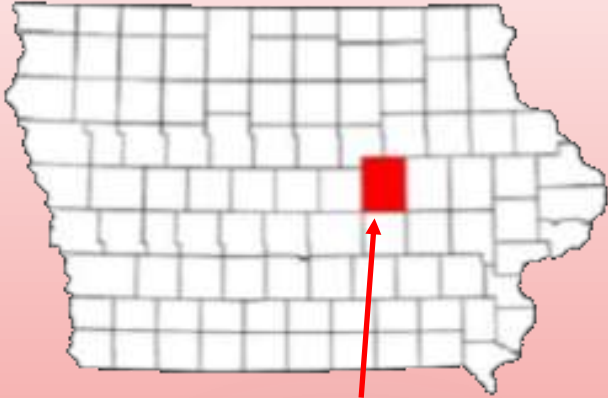
Huntington
County
Toledo,



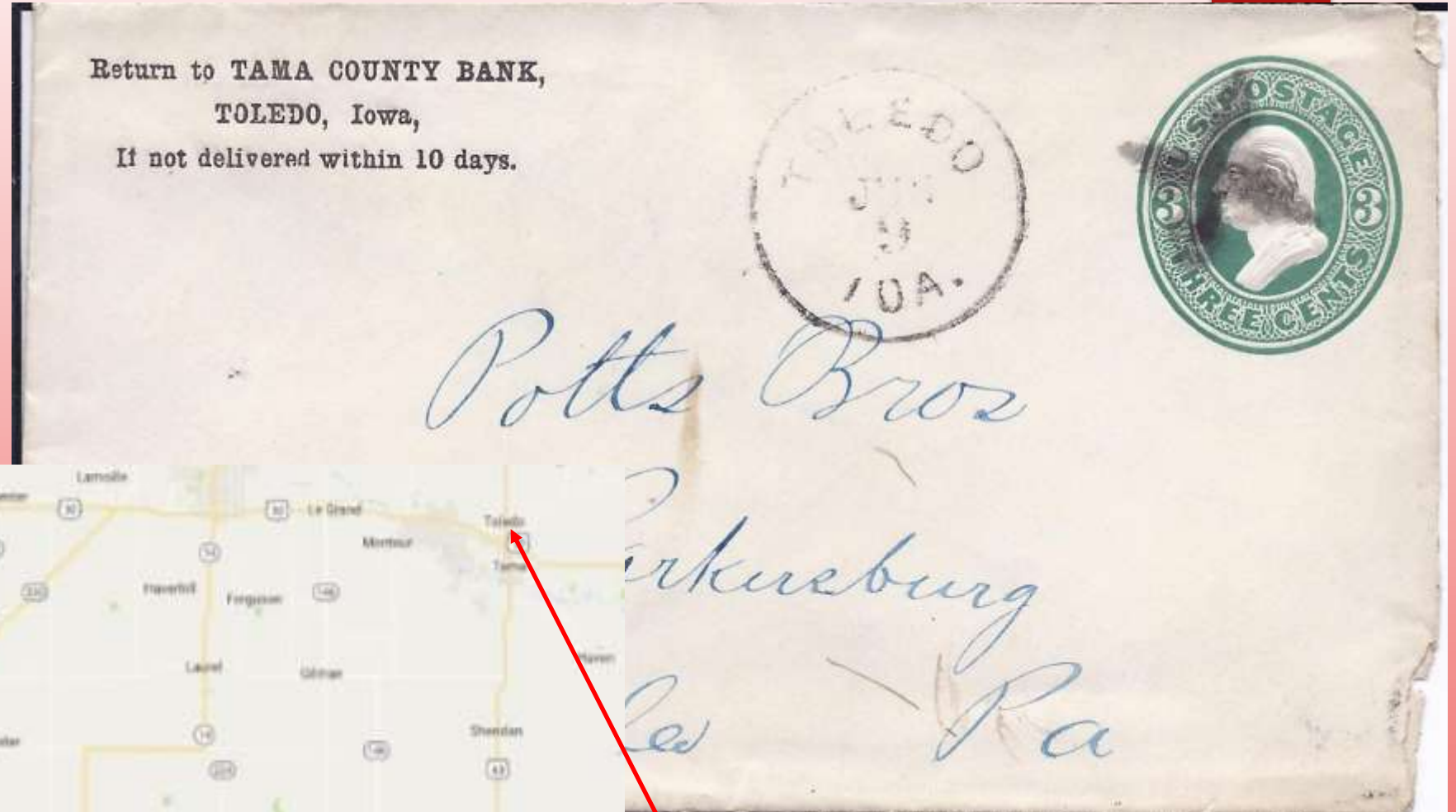
Toledo, Indiana
postmark.



Toledo, Iowa

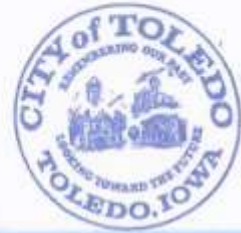


Tama County

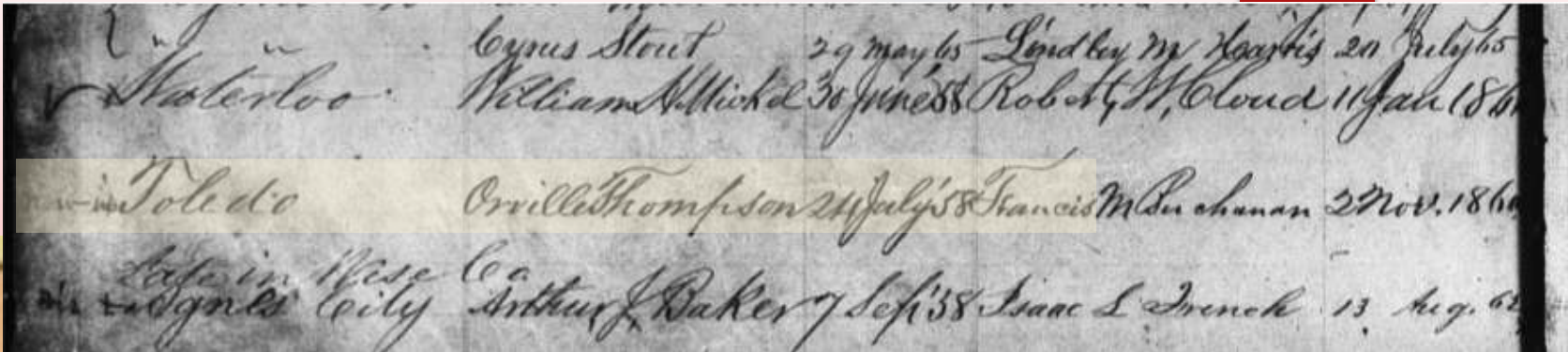
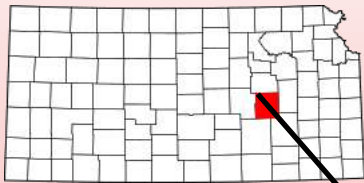


Toledo, Iowa

JONES BROS. AUTO CO.
TOLEDO, IOWA



Toledo, Kansas



Chase County page in “Record of Postmaster Appointment”

1903 Chase County, Kansas map
With location of Toledo



Toledo Street Toledo, Kansas

Toledo, Kansas

March 2, 1864 location report to Post Office Department, Contract Office.

Both covers carry a manuscript Toledo, Kansas and are pen cancelled.

(No. 30.) *Loss.*

POST OFFICE DEPARTMENT,
CONTRACT OFFICE,
Washington, *March 2, 1864.*

Sir:

To enable the Topographer of this Department to determine, with as much accuracy as possible, the relative positions of Post Offices, so that they may be correctly delineated on its maps, the Postmaster General requests you to fill up the spaces and answer the questions below, and return the same under cover to this office.

Respectfully, &c., &c.,

Postmaster at *Toledo* *Chas. L. Go*
Kansas *Chas. L. Go*
SECOND ASSISTANT POSTMASTER GENERAL.

The name of my office is *Toledo*. It is situated in township *16* (north or south,) range *9* (east or west,) and the *S. E.* quarter of *2* section, County of *Chase* State of *Kansas*.

The name of the most prominent river near it is *Cottonwood*.

This office is *two* miles from said river on the *South* side of it.

The name of the nearest office on the same route is *Plymouth* and its distance is *two* miles in a *East* direction from it.

The name of the nearest office on the same route on the other side is *Cottonwood Falls* and its distance is *two* miles in a *West* direction from it.

The name of the office off the route is *Americus* and its distance by the most direct road is *nine* miles in a *South East* direction from it.

A diagonal line is drawn from the office to the nearest river and the distance is marked.

State the names of all other offices near your office, in different directions from the above, and their distances from it by the most direct roads.

Answer:

Please to state whether the county boundaries given on the accompanying Map (taken from Smith's Map of Kansas, 1862) are correct — and, if not, please mark the correct county lines & return the Map with this.



as 12/22/81

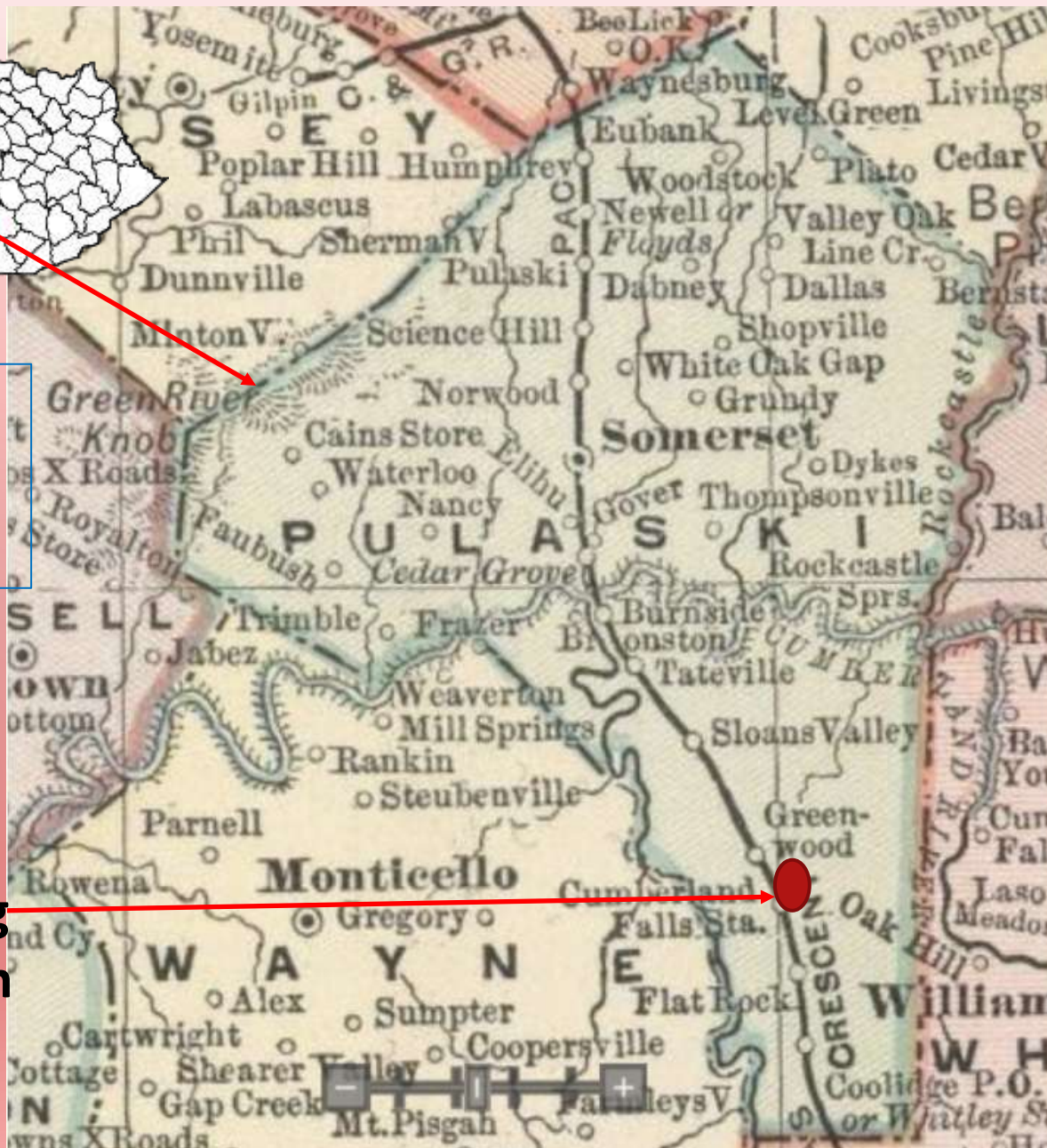
Ann Wesner
Gass Burgh
n county
Indiana

Toledo, Kentucky - Pulaski County

There are no
known
postmarks.

1891 Pulaski
County map.

Showing Toledo's
location according
to post office form
shone.



Post Office Department,
OFFICE OF THE FIRST ASSISTANT P. M. GENERAL,
WASHINGTON, D. C., *Feb 1*, 189*0*

(No. 1011—New Series—July 1, 1889.)

Six: Before the Postmaster General decides upon the application for the establishment of a post office at _____, County of *Pulaski*, State of _____, it will be necessary for you to carefully answer the subjoined questions, get a neighboring postmaster to certify to the correctness of the answers, and return the location paper to the Department, addressed to me. If the site selected for the proposed office should not be on any mail route now under contract, only a "Special Office" can be established there, to be supplied with mail from some convenient point on the nearest mail route by a special carrier (see section 733, Postal Laws and Regulations of 1887), for which service a sum equal to two-thirds of the amount of the salary of the postmaster at such office will be paid by the Department.

You should inform the contractor, or person performing service for him, of this application, and require him to execute the inclosed certificate as to the practicability of supplying the proposed office with mail, and return the same to the Department.

Very respectfully,
J. S. Johnston
First Ass't Postmaster General.

To Mr. *John Border Esq*
care of the Postmaster of *Greenwood*, who will please forward to him.

STATEMENT.

The proposed office to be called *Toledo*

Select a short name for the proposed office, which, when written, will not resemble the name of any other post office in the State.

It will be situated in the _____ quarter of Section _____ Township _____ (North or South) Range _____ (East or West), in the County of *Pulaski*, State of *Kentucky*.

It will be on or near route No. *no*, being the route from *Chattanooga* to *Chattanooga*, on which the mail is now carried *four* times per week.

Will it be directly on this route?—*no*, *five and one half miles*.

If not, how far from it?—*no*. To be supplied from *Greenwood*.

If not on any route, is a "Special Office" wanted?—*yes*. To be supplied from *Greenwood*.

The name of the nearest office to the proposed one, on one side, is *Greenwood*, its distance is *6 1/2* miles in a *south westerly* direction from the proposed office.

The name of the nearest office, on the other side, is *Regency*, its distance is *seven miles* in a *west* direction from the proposed office.

The name of the other nearest office to the proposed one is _____, its distance by the most direct road is _____ miles in a _____ direction from the proposed office.

The name of the most prominent river near it is *big south fork of Cumberland river*.

The name of the nearest creek is *Cooper Creek*.

The proposed office will be _____ miles from said river, on the _____ side of it, and will be *one and half* miles from said nearest creek on the _____ side of it.

The name of the nearest railroad is *Cumberland*.

If on the line of or near a railroad, on which side will the office be located?—*on the south side*.

If it be a village, state the number of inhabitants—*no*.

Also, the population to be supplied by the proposed office—*no*.

A diagram, or sketch from a map, showing the position of the proposed office, with neighboring river or creek, roads, and other post offices, towns, or villages near it, will be useful, and is therefore desired.

A correct map of the locality might be furnished by the county surveyor, but this must be without expense to the Post Office Department.

ALL WHICH I CERTIFY to be correct and true, according to the best of my knowledge and belief, this *15th* day of *January*, 189*1*.

(If Sign full name.) *J. S. Johnston*, First Assistant P. M.

I CERTIFY that I have examined the foregoing statement and that it is correct and true, to the best of my knowledge and belief.

M. A. Adams
Postmaster at *Greenwood*.

(OVER)

Toledo, Louisiana



1891 Vernon County,
Louisiana

W/ location of Toledo

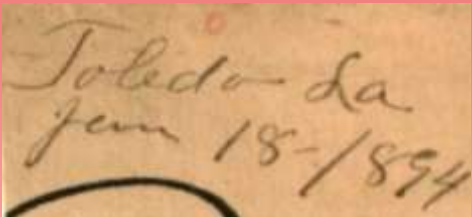


Established January 26, 1880 with
William R. Shehane as postmaster.



Aerial view of Vernon Parish, showing area where
Toledo post office was located.

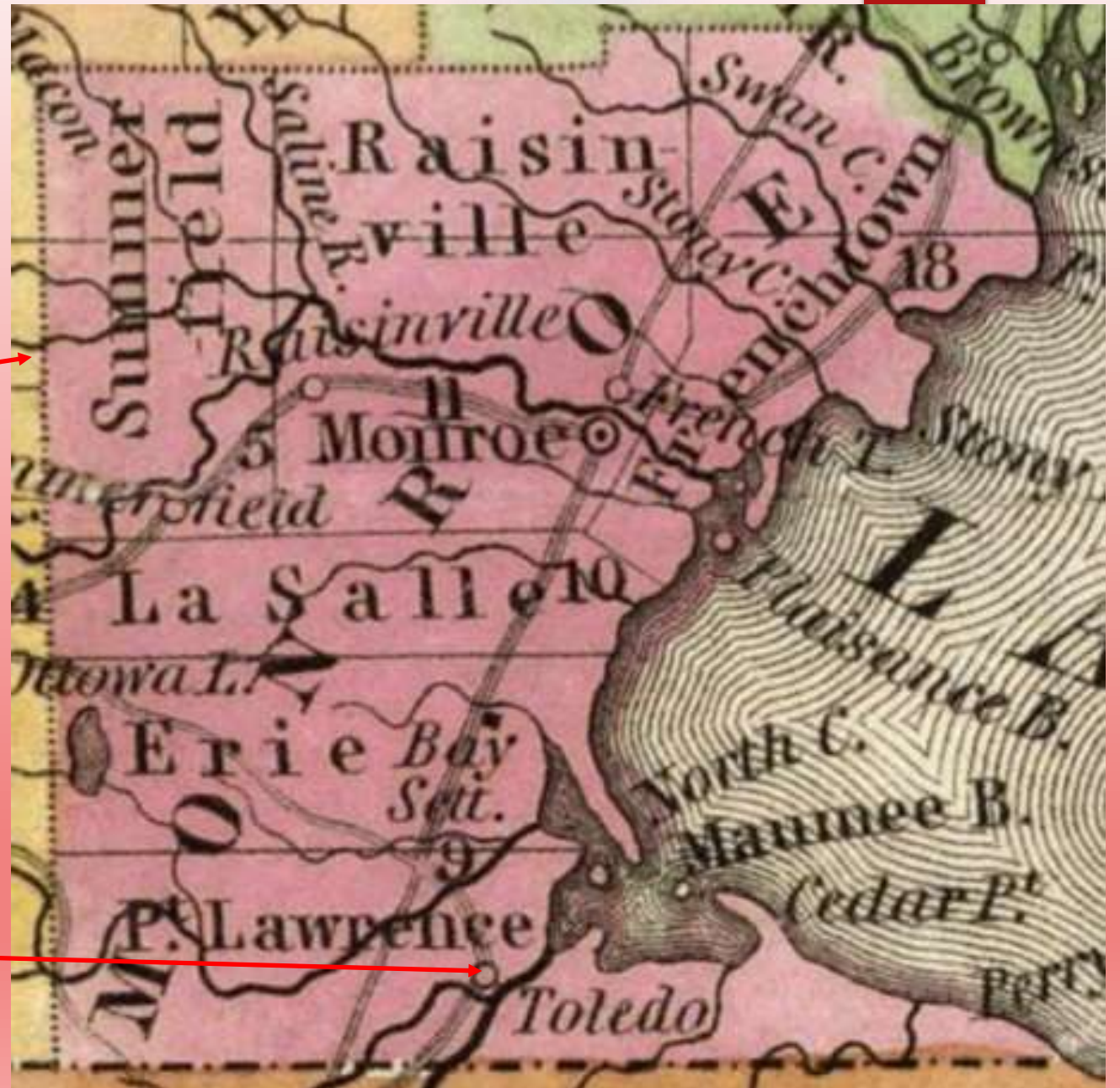
Toledo, Louisiana
manuscript postmark
January 18, 1894



Toledo, Michigan Territory



**1836 Monroe County Michigan Map
showing location of Toledo.**



Toledo, Michigan Territory

Toledo
March 29

Lyman

1834

TOLEDO, M. T. JAN. 24

Free

D. Chauncey
July 1836

Hon Salmon P. Chase
Post Master
Coville
Monroe Co
N. Y.

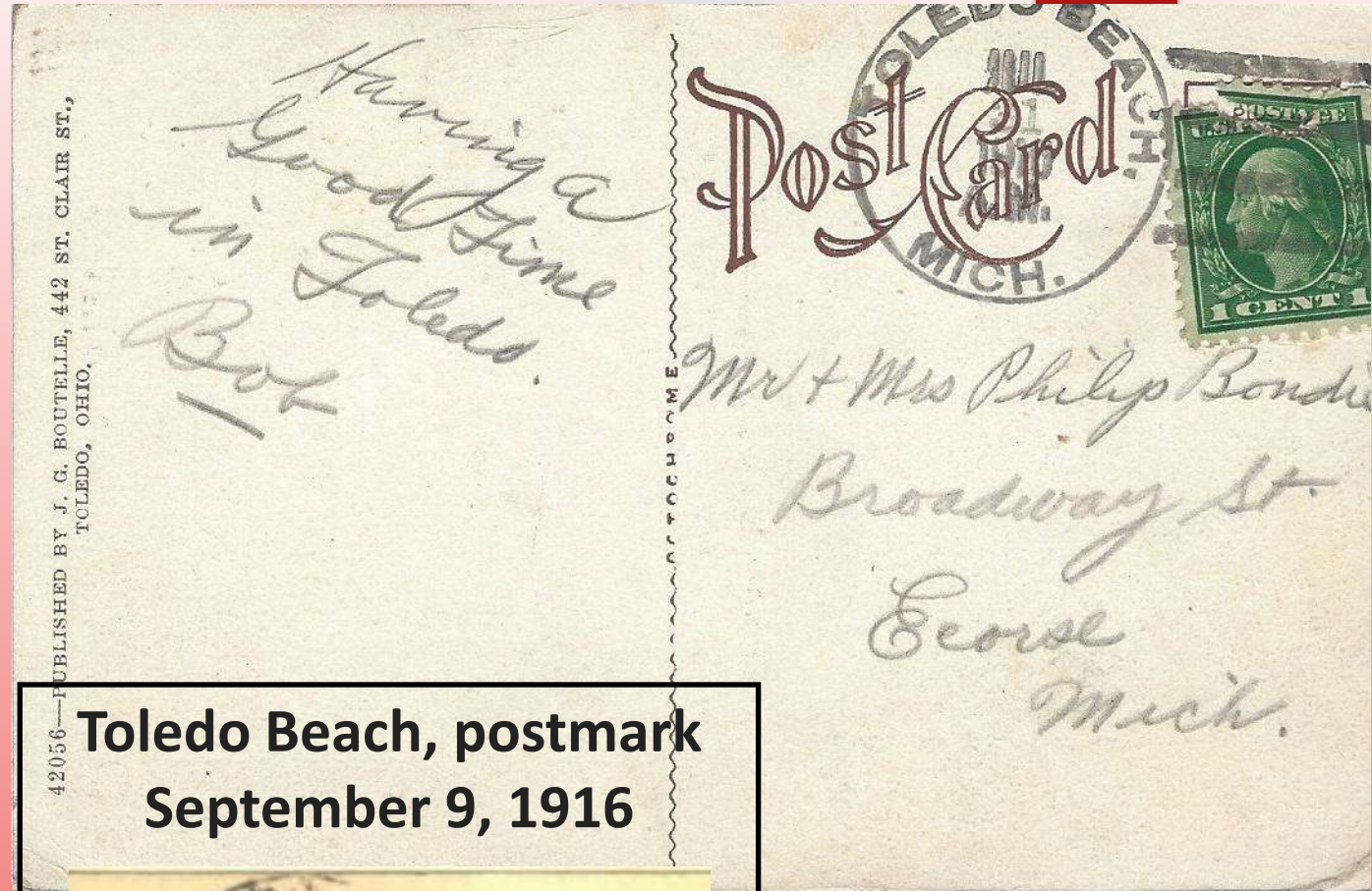
Toledo Beach, Michigan



**1923 Monroe County,
Michigan
With location of Toledo
Beach**

Toledo Beach, Michigan

Aerial view of Toledo Beach, Michigan showing the area where Toledo Beach post office was located.



Toledo Beach, postmark
September 9, 1916



A map of the state of Indiana, divided into its 92 counties. Elkhart County, located in the northeast corner of the state, is highlighted in a solid red color. The surrounding counties are shown in white with black outlines. The map is set against a background that appears to be a textured, light-colored surface with some faint, illegible markings.

1903 Lowndes County,

Mississippi map with no Toledo

shown.

Office lasted just nine months.

**No known postmarks
exist from this office.**

**Lowndes County where
Toledo was located.**

At a "special office" the postmaster is authorized to supply a carrier to supply the office in cases as practicable, for a sum not exceeding two-thirds of the postmaster's compensation.

Toledo, Missouri - Calloway County

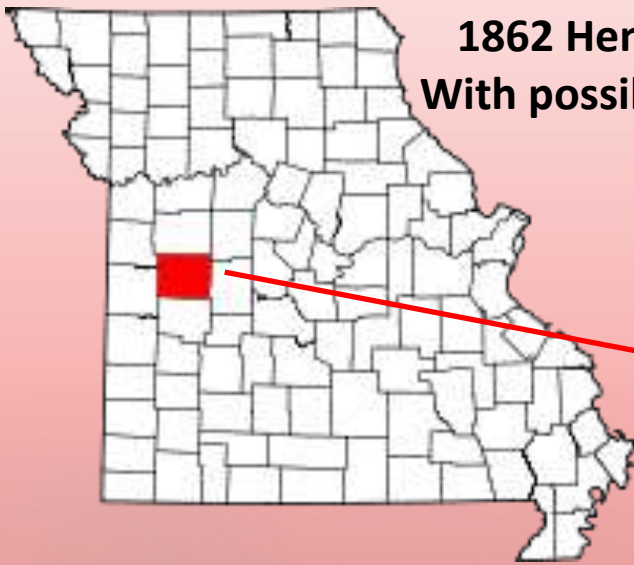
Calloway County Showing Toledo



Toledo, Missouri - Henry County

There are no known postmarks from this office

1862 Henry County Missouri
With possible location of Toledo



Toledo, Missouri - Ozark County



1926 Ozark County, Missouri
Map with location of Toledo



The first postmaster was Spencer Blankenship in June 22, 1910. Office was closed September 10, 1942.

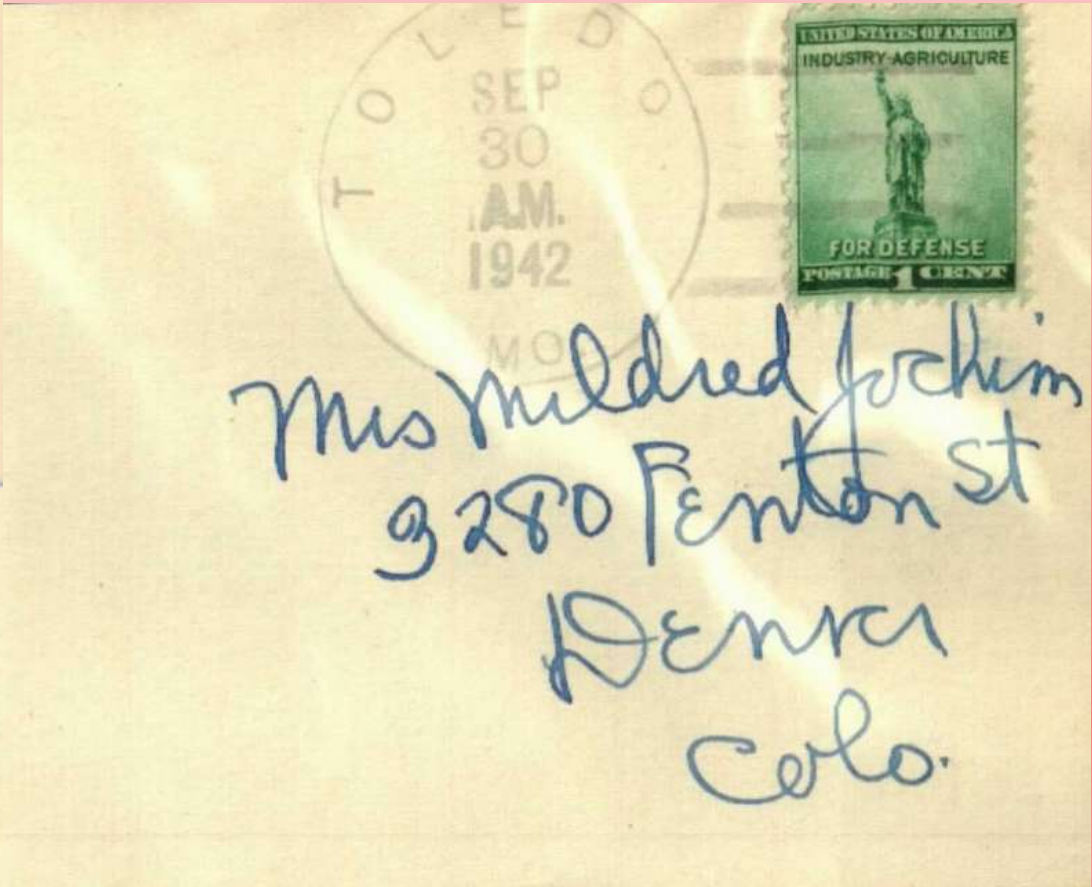


Ariel view of the
area where Toledo was.

Toledo, Missouri - Ozark County



Toledo,
Ozark County,
Missouri
postmark of
June 16 1916.



Toledo, North Carolina - Rutherford County



1886 Rutherford County map Showing Toledo



No Postmarks Known from this office.



Toledo, North Carolina - Transylvania County



Transylvania County,
map showing area
where Toledo is
believed to have been
located.

U.S. POST OFFICE DEPARTMENT
OFFICE OF THE FIRST ASSISTANT P. M. GENERAL
WASHINGTON, D. C. July 1, 1890

(No. 1011—New Series—July 1, 1890.)

REPLY TO THE POSTMASTER GENERAL DECISION UPON THE APPLICATION FOR THE ESTABLISHMENT OF A POST OFFICE AT Toledo, County of Transylvania, State of N.C. It will be necessary for you to carefully answer the solicited question, get a neighboring postmaster to verify to the correctness of the answers, and return the location paper to the Department, addressed to me. If the site selected for the proposed office should not be on any existing route now under contract, only a "Special Office" can be established there, to be supplied with mail from some convenient point on the nearest mail route by a special carrier (see section 113, Postal Laws and Regulations of 1879), for which service a sum equal to two-thirds of the amount of the salary of the postmaster at such office will be paid by the Department.

You should inform the contractor, or person performing service for him, of this application, and require him to execute the inclosed certificate as to the practicability of supplying the proposed office with mail, and return the same to the Department.

Very respectfully,
J. S. Benson
First Asst. Postmaster General.

To Mr. M. English
Care of the Postmaster at Clotho, who will please forward to him.

STATEMENT.

The proposed office to be called Toledo.

Select a short name for the proposed office, which, when written, will not resemble the name of any other post office in the State.

It will be situated in the quarter of Section 14, Township 1 North, Range 1 East, in the County of Transylvania, State of N.C.

It will be on or near route No. 14, being the route from Clotho to Toledo.

Will it be directly on the route? Yes, on which the mail is now carried once per week.

If not, how far from it? 1/2 mile.

If not, how far from it? 1/2 mile.

The name of the nearest office in the proposed area, as now established, is Clotho. Direction from the proposed office.

The name of the nearest office, in the other side, is Clotho. Direction from the proposed office.

The name of the other nearest office to the proposed one is Clotho.

The distance by the most direct road is 1/2 mile from the proposed office.

The name of the next postmaster since now it is Clotho.

The name of the nearest creek is Clotho.

The proposed office will be on the side of the road from Clotho to Toledo.

The name of the nearest railroad is None.

If it is a village, state the number of inhabitants None.

Also, the population to be supplied by the proposed office None.

A sketch, or sketch from a map, showing the position of the proposed new office, with neighboring towns, roads, and other post offices, towns, or villages near it, will be useful, and is therefore desired.

A recent map of the locality might be furnished by the postmaster, but this must be without expense to the Post Office Department.

As, when I declare to be correct and true, according to the best of my knowledge and belief, this July 1, 1890.

(UP Sign full name) M. English Proposed P. M.

I require that I have examined the foregoing statement, and that it is correct and true, to the best of my knowledge and belief.

Postmaster at Clotho J. S. Benson

OVER.

No Postmarks Known
from this Office.

Toledo, North Carolina - Yancey County



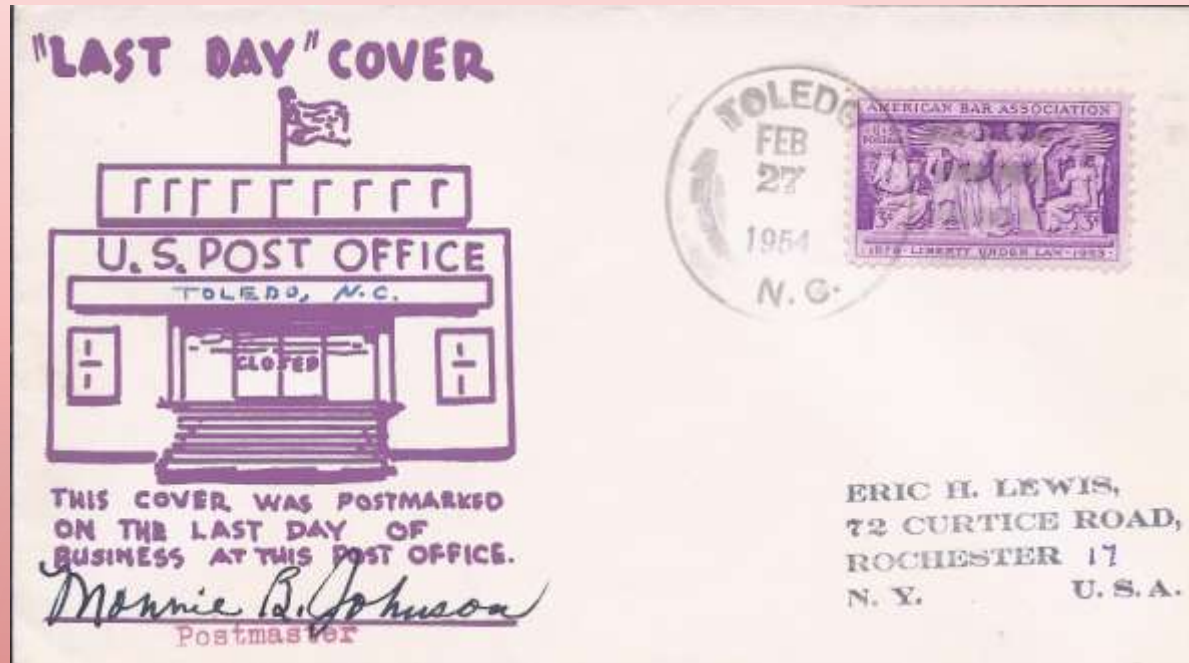
1912 Yancey County Map
Showing Toledo



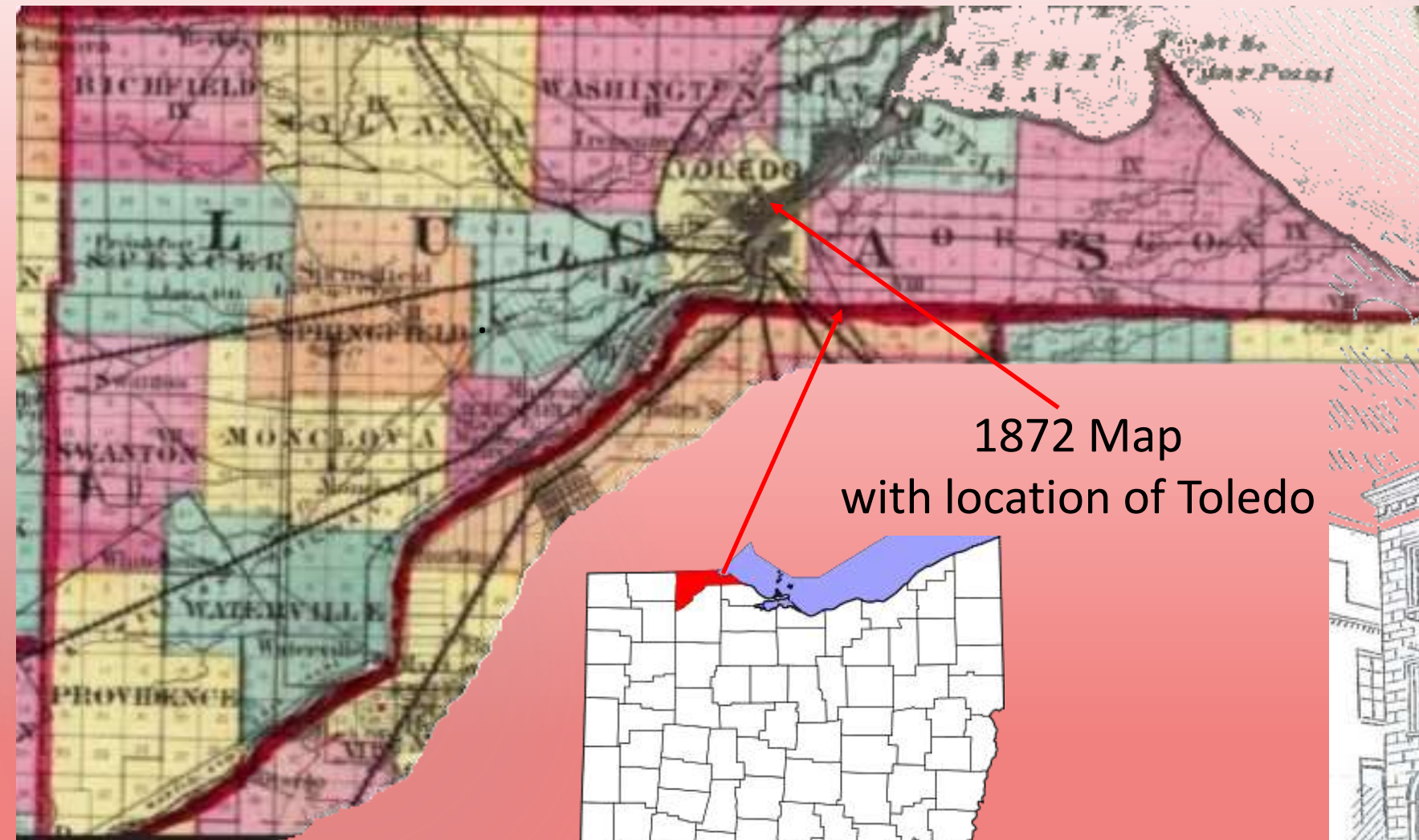
Site of Toledo P.O. in Yancey County. October 16, 1908 lists location as the west bank of Pigpen Creek.

Pigpen Creek

Two covers postmarked last day of business.
Signed by postmaster Mammie B. Johnson.



Toledo, Ohio

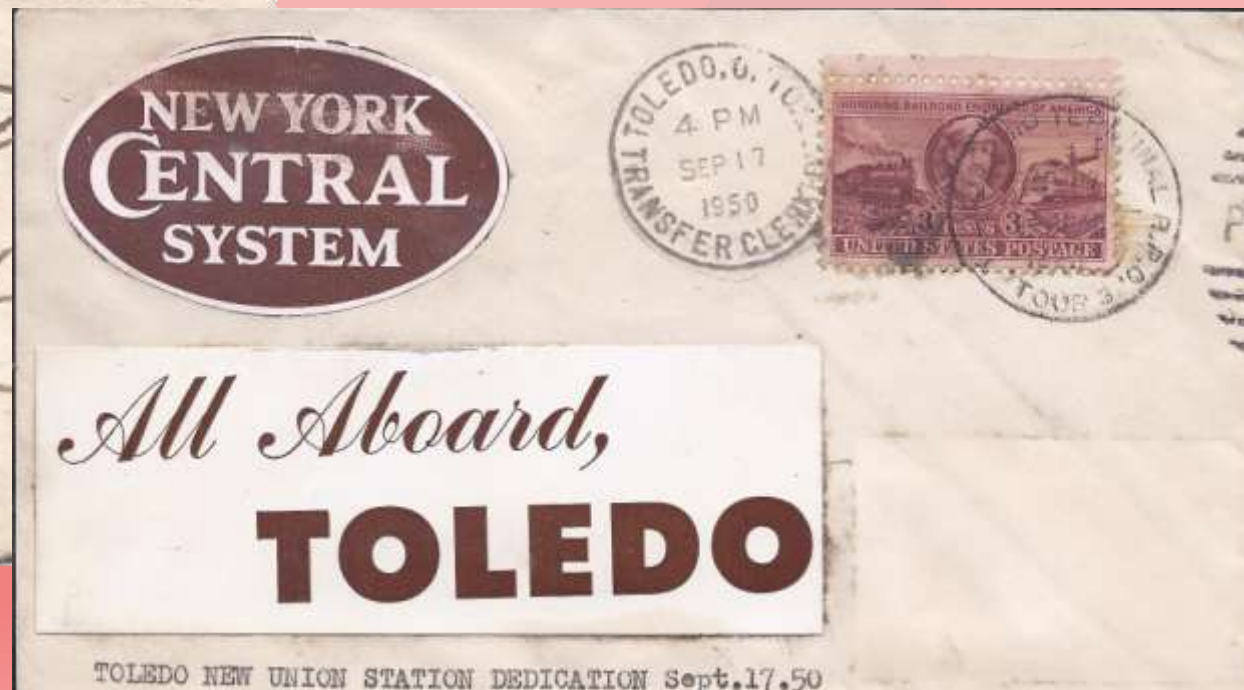


1872 Map
with location of Toledo





September 17, 1950 cover on dedication on
the new Union Terminal



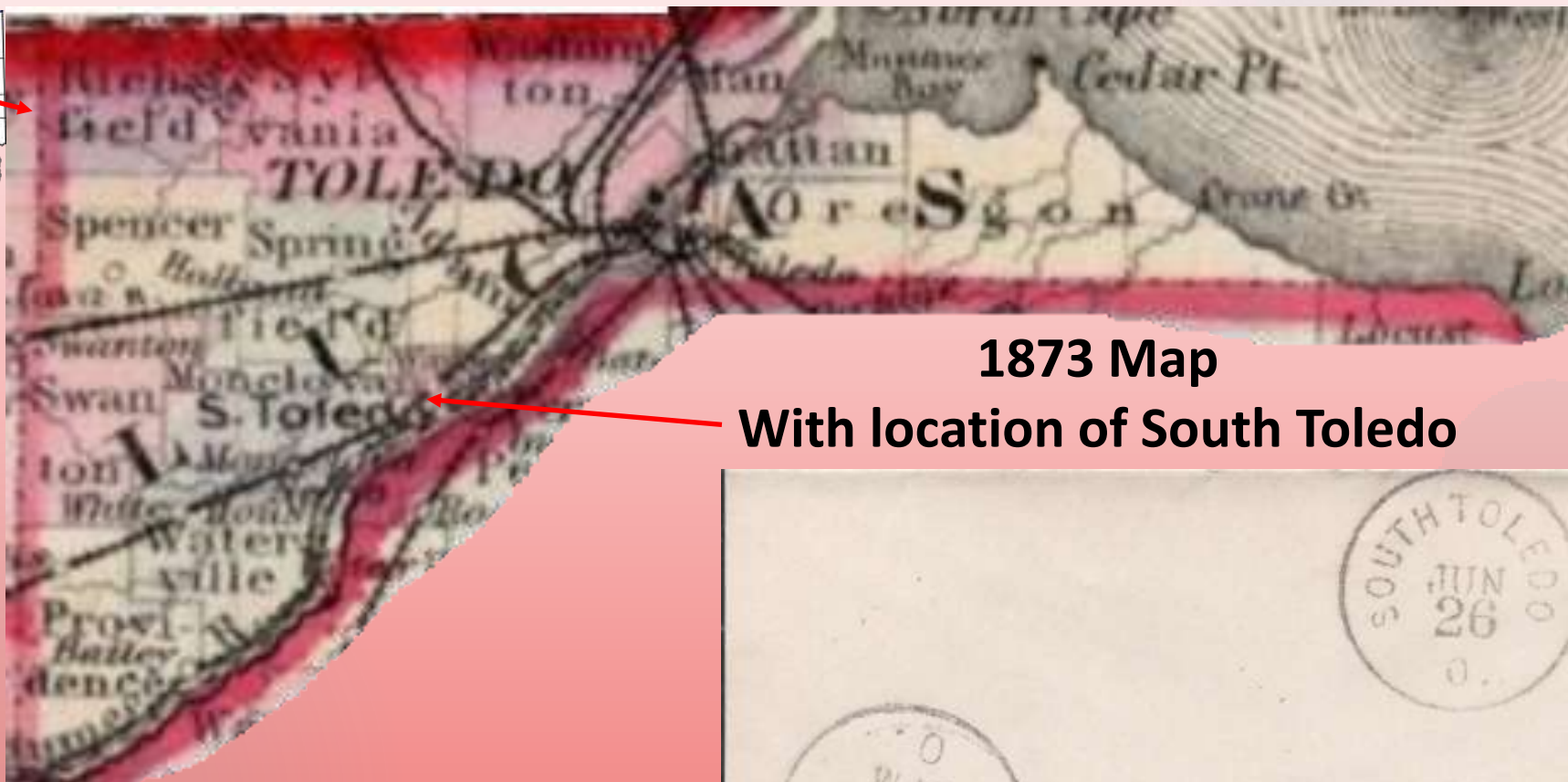
East Toledo, Ohio



1883 Map showing With
location of East Toledo



South Toledo, Ohio



1873 Map

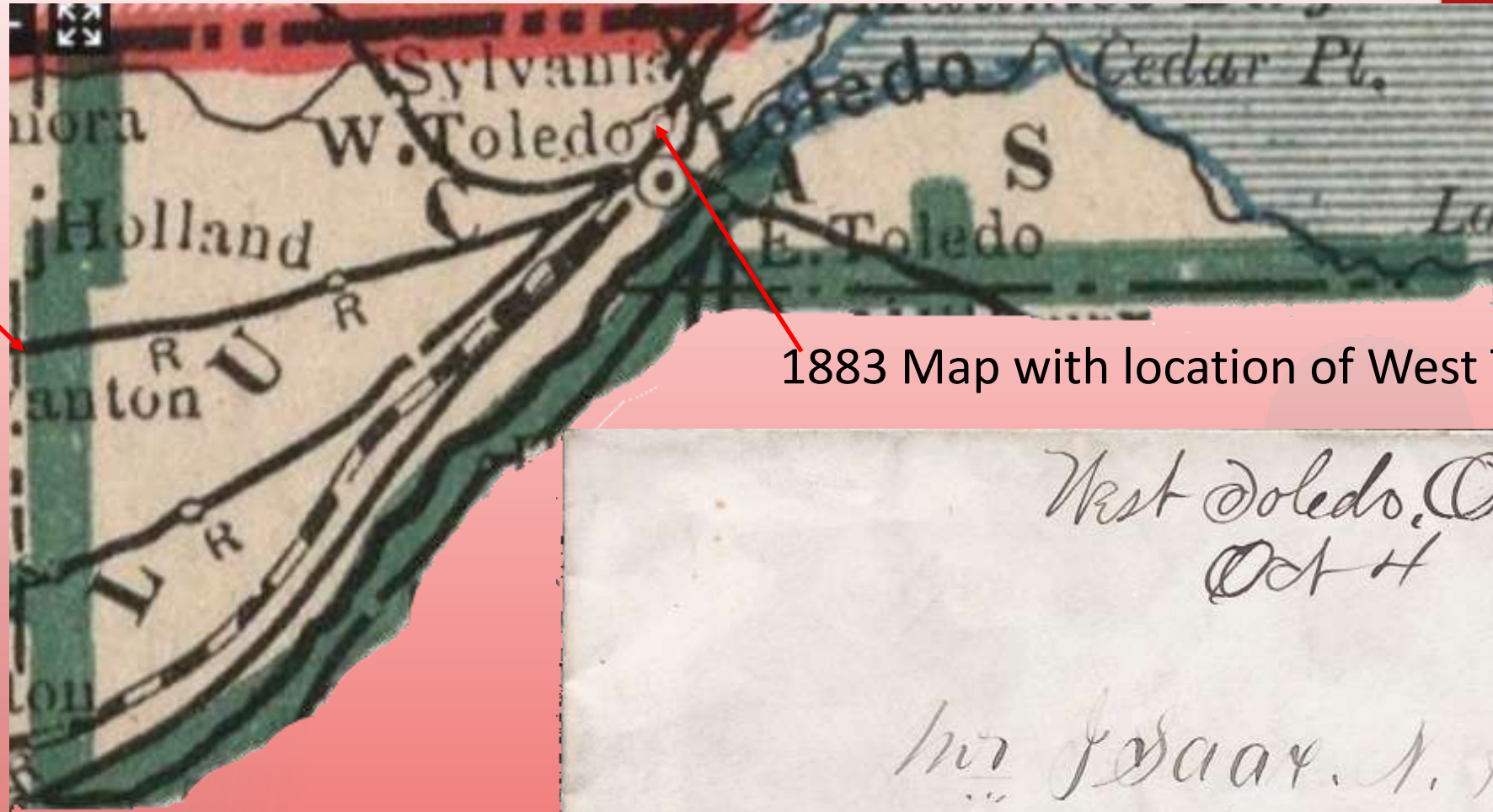
With location of South Toledo

Office had numerous names which are listed below.

- Fort Meigs - May 9th 1814 to March 3rd, 1824**
- Maumee - March 4th, 1824 to October 1st, 1838**
- Maumee City - October 2nd, 1838 to April 6th, 1875**
- South Toledo - April 7th 1875 to April 22nd, 1887**
- Maumee - April 23rd, 1887 to Present**

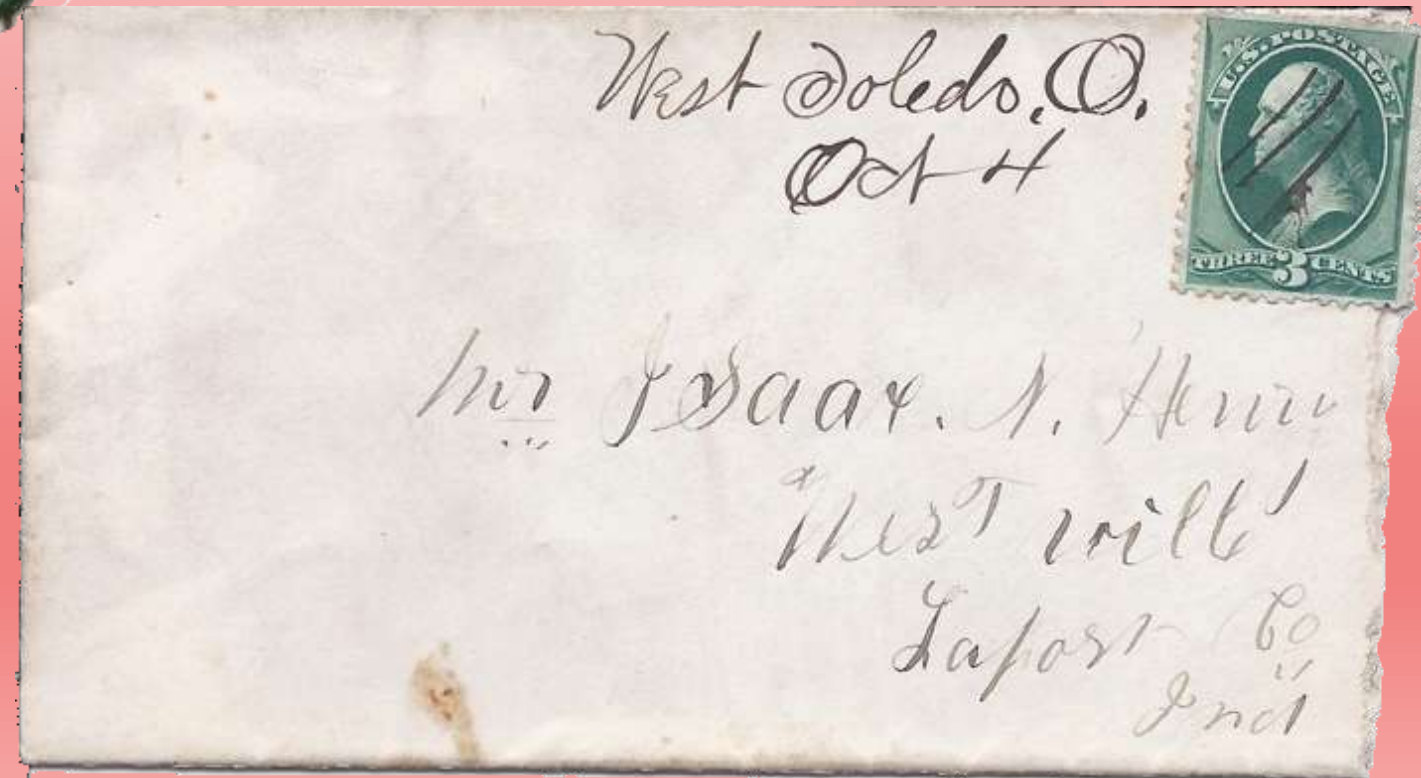


West Toledo, Ohio

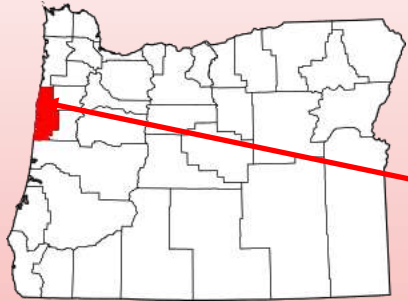


1883 Map with location of West Toledo

October 4, 1876 letter is pen
canceled and carries
manuscript postmark.



Toledo, Oregon

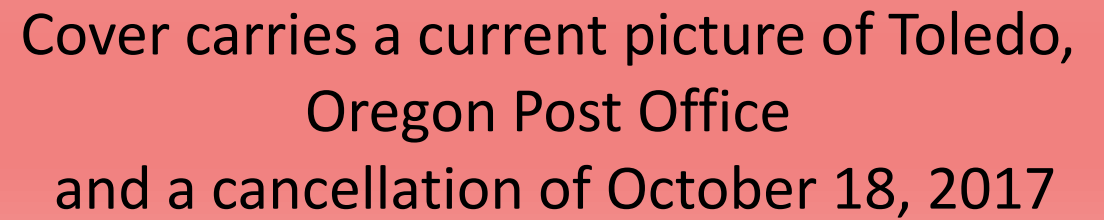


This office is still in operation.



1891 map showing Toledo

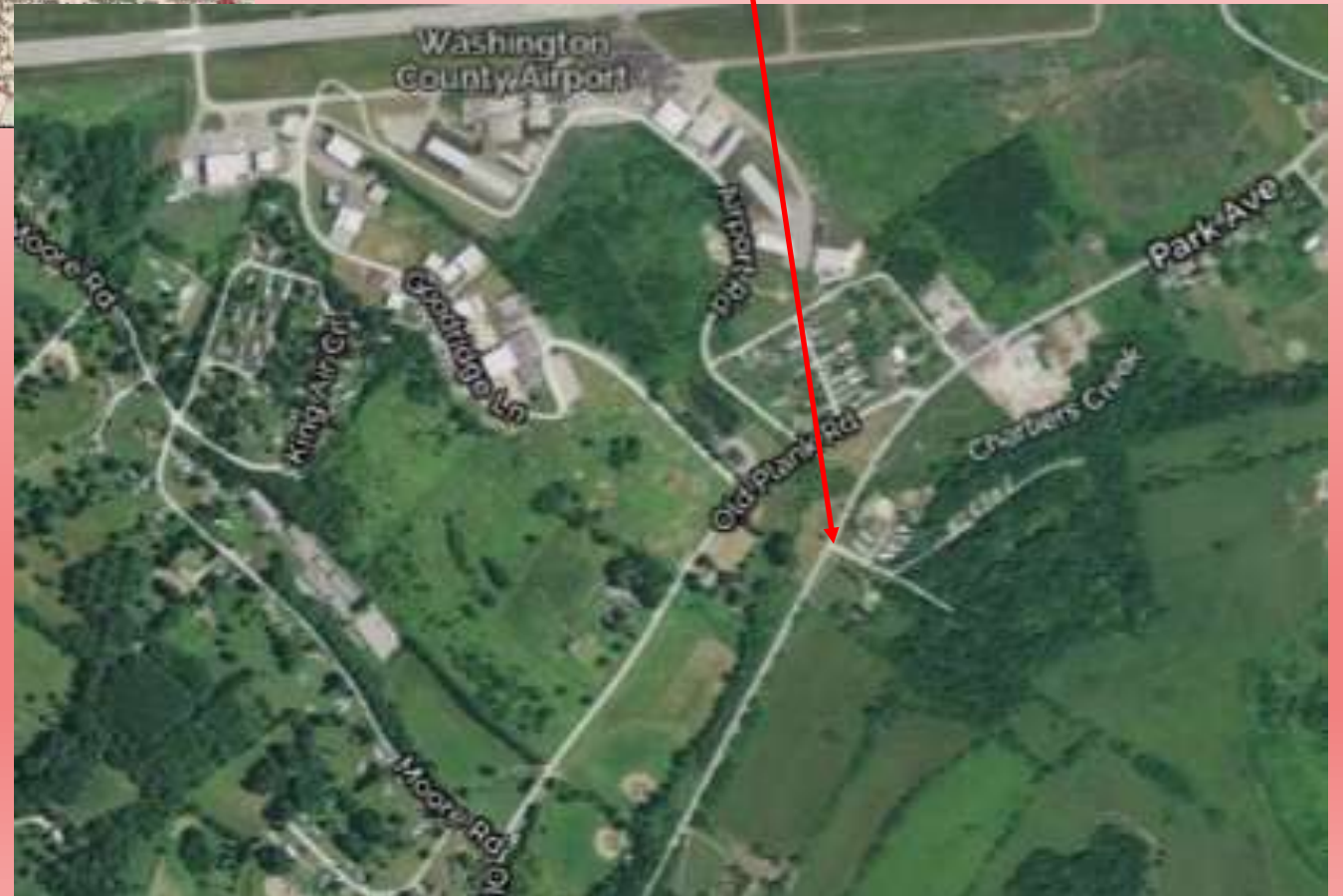
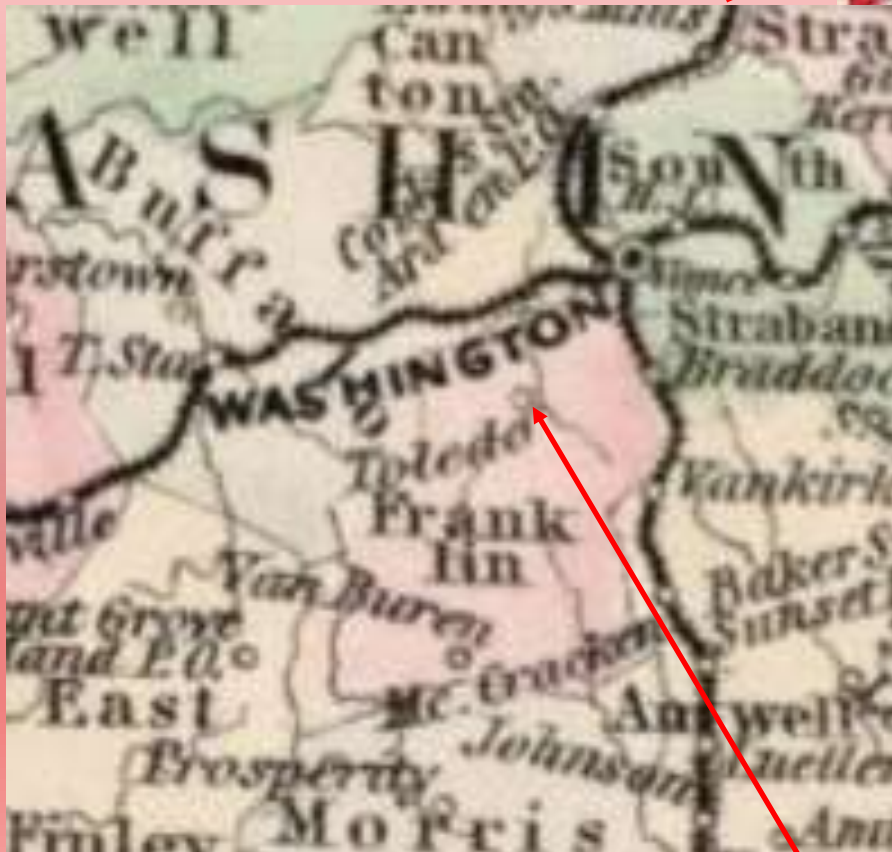
1998, 1999, 2000, 2001, 2002, 2003, 2004, 2005, 2006, 2007, 2008, 2009, 2010, 2011, 2012, 2013, 2014, 2015, 2016, 2017, 2018, 2019, 2020, 2021, 2022, 2023, 2024, 2025, 2026, 2027, 2028, 2029, 2030, 2031, 2032, 2033, 2034, 2035, 2036, 2037, 2038, 2039, 2040, 2041, 2042, 2043, 2044, 2045, 2046, 2047, 2048, 2049, 2050, 2051, 2052, 2053, 2054, 2055, 2056, 2057, 2058, 2059, 2060, 2061, 2062, 2063, 2064, 2065, 2066, 2067, 2068, 2069, 2070, 2071, 2072, 2073, 2074, 2075, 2076, 2077, 2078, 2079, 2080, 2081, 2082, 2083, 2084, 2085, 2086, 2087, 2088, 2089, 2090, 2091, 2092, 2093, 2094, 2095, 2096, 2097, 2098, 2099, 2100, 2101, 2102, 2103, 2104, 2105, 2106, 2107, 2108, 2109, 2110, 2111, 2112, 2113, 2114, 2115, 2116, 2117, 2118, 2119, 2120, 2121, 2122, 2123, 2124, 2125, 2126, 2127, 2128, 2129, 2130, 2131, 2132, 2133, 2134, 2135, 2136, 2137, 2138, 2139, 2140, 2141, 2142, 2143, 2144, 2145, 2146, 2147, 2148, 2149, 2150, 2151, 2152, 2153, 2154, 2155, 2156, 2157, 2158, 2159, 2160, 2161, 2162, 2163, 2164, 2165, 2166, 2167, 2168, 2169, 2170, 2171, 2172, 2173, 2174, 2175, 2176, 2177, 2178, 2179, 2180, 2181, 2182, 2183, 2184, 2185, 2186, 2187, 2188, 2189, 2190, 2191, 2192, 2193, 2194, 2195, 2196, 2197, 2198, 2199, 2200, 2201, 2202, 2203, 2204, 2205, 2206, 2207, 2208, 2209, 2210, 2211, 2212, 2213, 2214, 2215, 2216, 2217, 2218, 2219, 2220, 2221, 2222, 2223, 2224, 2225, 2226, 2227, 2228, 2229, 2230, 2231, 2232, 2233, 2234, 2235, 2236, 2237, 2238, 2239, 2240, 2241, 2242, 2243, 2244, 2245, 2246, 2247, 2248, 2249, 2250, 2251, 2252, 2253, 2254, 2255, 2256, 2257, 2258, 2259, 2260, 2261, 2262, 2263, 2264, 2265, 2266, 2267, 2268, 2269, 2270, 2271, 2272, 2273, 2274, 2275, 2276, 2277, 2278, 2279, 2280, 2281, 2282, 2283, 2284, 2285, 2286, 2287, 2288, 2289, 2290, 2291, 2292, 2293, 2294, 2295, 2296, 2297, 2298, 2299, 2300, 2301, 2302, 2303, 2304, 2305, 2306, 2307, 2308, 2309, 2310, 2311, 2312, 2313, 2314, 2315, 2316, 2317, 2318, 2319, 2320, 2321, 2322, 2323, 2324, 2325, 2326, 2327, 2328, 2329, 2330, 2331, 2332, 2333, 2334, 2335, 2336, 2337, 2338, 2339, 2340, 2341, 2342, 2343, 2344, 2345, 2346, 2347, 2348, 2349, 2350, 2351, 2352, 2353, 2354, 2355, 2356, 2357, 2358, 2359, 2360, 2361, 2362, 2363, 2364, 2365, 2366, 2367, 2368, 2369, 2370, 2371, 2372, 2373, 2374, 2375, 2376, 2377, 2378, 2379, 2380, 2381, 2382, 2383, 2384, 2385, 2386, 2387, 2388, 2389, 2390, 2391, 2392, 2393, 2394, 2395, 2396, 2397, 2398, 2399, 2400, 2401, 2402, 2403, 2404, 2405, 2406, 2407, 2408, 2409, 2410, 2411, 2412, 2413, 2414, 2415, 2416, 2417, 2418, 2419, 2420, 2421, 2422, 2423, 2424, 2425, 2426, 2427, 2428, 2429, 2430, 2431, 2432, 2433, 2434, 2435, 2436, 2437, 2438, 2439, 2440, 2441, 2442, 2443, 2444, 2445, 2446, 2447, 2448, 2449, 2450, 2451, 2452, 2453, 2454, 2455, 2456, 2457, 2458, 2459, 2460, 2461, 2462, 2463, 2464, 2465, 2466, 2467, 2468, 2469, 2470, 2471, 2472, 2473, 2474, 2475, 2476, 2477, 2478, 2479, 2480, 2481, 2482, 2483, 2484, 2485, 2486, 2487, 2488, 2489, 2490, 2491, 2492, 2493, 2494, 2495, 2496, 2497, 2498, 2499, 2500, 2501, 2502, 2503, 2504, 2505, 2506, 2507, 2508, 2509, 2510, 2511, 2512, 2513, 2514, 2515, 2516, 2517, 2518, 2519, 2520, 2521, 2522, 2523, 2524, 2525, 2526, 2527, 2528, 2529, 2530, 2531, 2532, 2533, 2534, 2535, 2536, 2537, 2538, 2539, 2540, 2541, 2542, 2543, 2544, 2545, 2546, 2547, 2548, 2549, 2550, 2551, 2552, 2553, 2554, 2555, 2556, 2557, 2558, 2559, 2560, 2561, 2562, 2563, 2564, 2565, 2566, 2567, 2568, 2569, 2570, 2571, 2572, 2573, 2574, 2575, 2576, 2577, 2578, 2579, 2580, 2581, 2582, 2583, 2584, 2585, 2586, 2587, 2588, 2589, 2590, 2591, 2592, 2593, 2594, 2595, 2596, 2597, 2598, 2599, 2600, 2601, 2602, 2603, 2604, 2605, 2606, 2607, 2608, 2609, 2610, 2611, 2612, 2613, 2614, 2615, 2616, 2617, 2618, 2619, 2620, 2621, 2622, 2623, 2624, 2625, 2626, 2627, 2628, 2629, 2630, 2631, 2632, 2633, 2634, 2635, 2636, 2637, 2638, 2639, 2640, 2641, 2642, 2643, 2644, 2645, 2646, 2647, 2648, 2649, 2650, 2651, 2652, 2653, 2654, 2655, 2656, 2657, 2658, 2659, 2660, 2661, 2662, 2663, 2664, 2665, 2666, 2667, 2668, 2669, 2670, 2671, 2672, 2673, 2674, 2675, 2676, 2677, 2678, 2679, 26



Toledo, Pennsylvania



**Aerial view of area Toledo post office's was located.
Today there are a few
businesses and
Washington Airport.**



1883 map w/location of Toledo

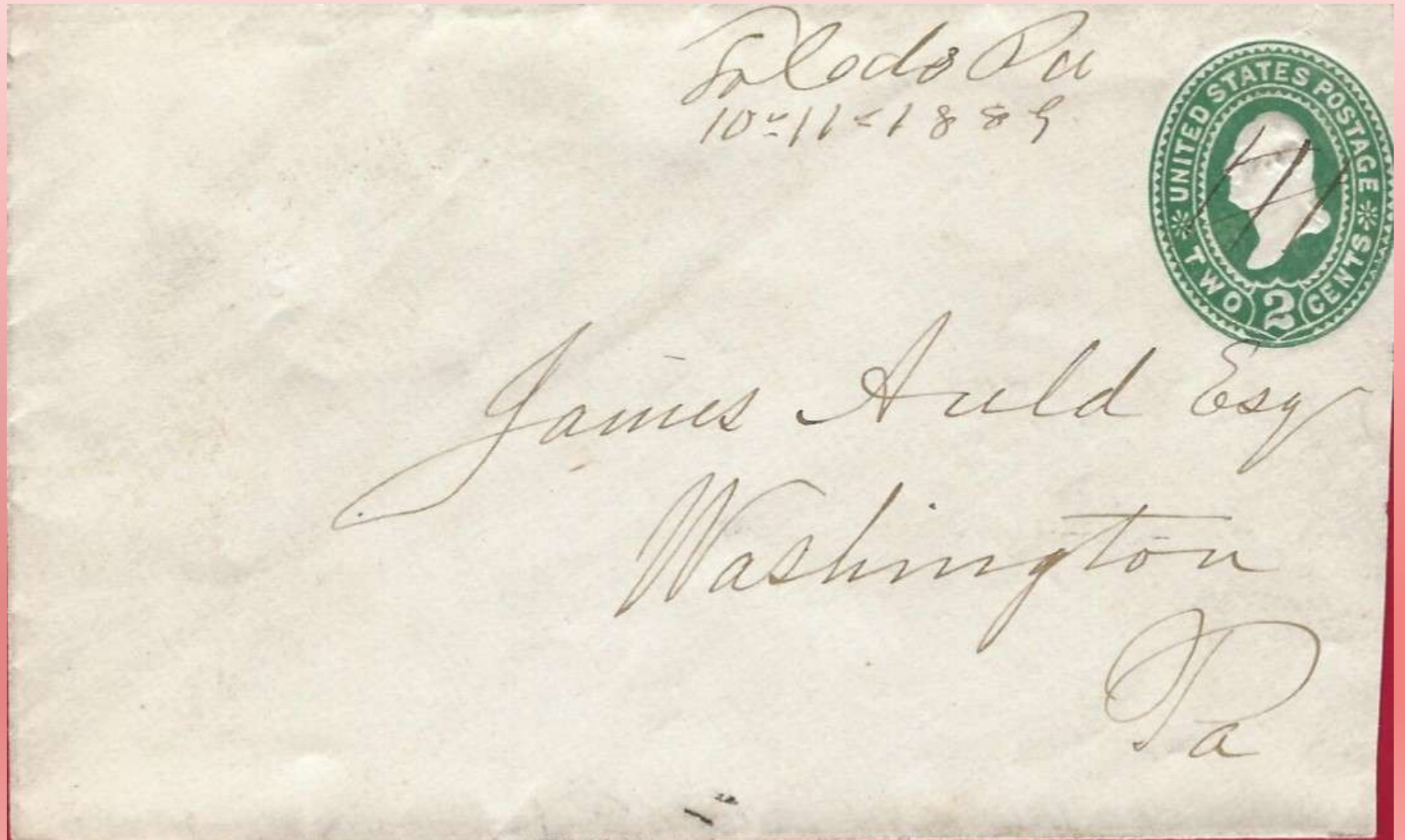
Toledo, Pennsylvania

Manuscript
Toledo Pa
10-11-1889

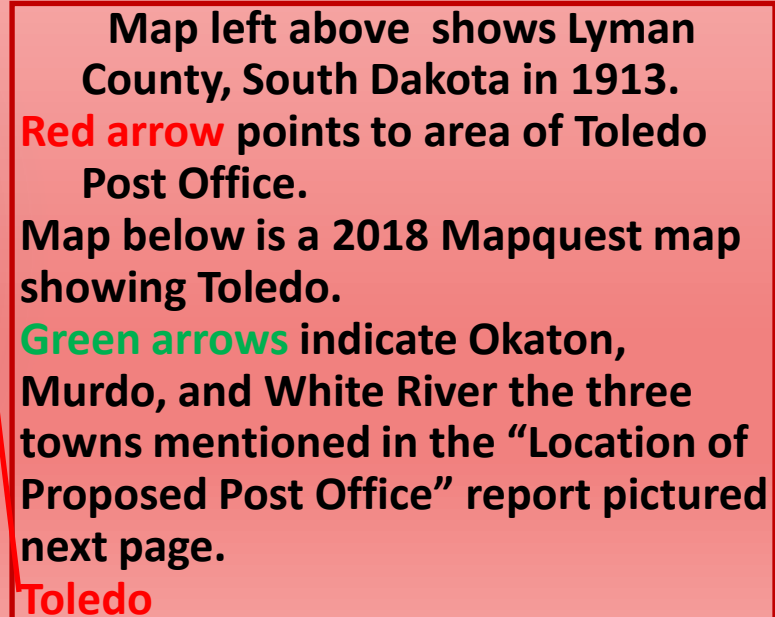
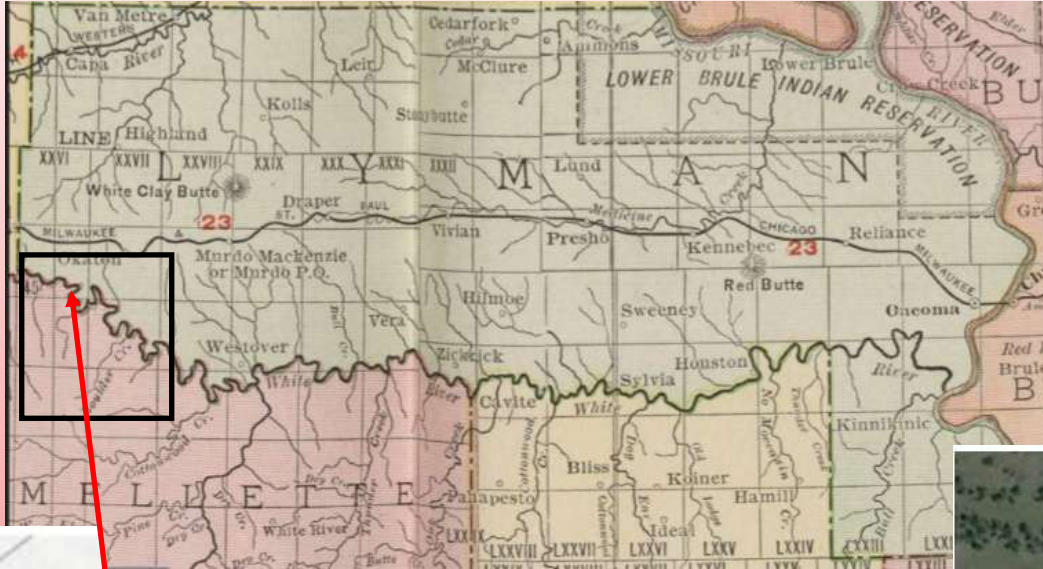
Pen Canceled



100% scan of
28mm CDS
Washington PA
back stamp



1998, 1999, 2000, 2001, 2002, 2003, 2004, 2005, 2006, 2007, 2008, 2009, 2010, 2011, 2012, 2013, 2014, 2015, 2016, 2017, 2018, 2019, 2020, 2021, 2022, 2023, 2024, 2025, 2026, 2027, 2028, 2029, 2030, 2031, 2032, 2033, 2034, 2035, 2036, 2037, 2038, 2039, 2040, 2041, 2042, 2043, 2044, 2045, 2046, 2047, 2048, 2049, 2050, 2051, 2052, 2053, 2054, 2055, 2056, 2057, 2058, 2059, 2060, 2061, 2062, 2063, 2064, 2065, 2066, 2067, 2068, 2069, 2070, 2071, 2072, 2073, 2074, 2075, 2076, 2077, 2078, 2079, 2080, 2081, 2082, 2083, 2084, 2085, 2086, 2087, 2088, 2089, 2090, 2091, 2092, 2093, 2094, 2095, 2096, 2097, 2098, 2099, 2100, 2101, 2102, 2103, 2104, 2105, 2106, 2107, 2108, 2109, 2110, 2111, 2112, 2113, 2114, 2115, 2116, 2117, 2118, 2119, 2120, 2121, 2122, 2123, 2124, 2125, 2126, 2127, 2128, 2129, 2130, 2131, 2132, 2133, 2134, 2135, 2136, 2137, 2138, 2139, 2140, 2141, 2142, 2143, 2144, 2145, 2146, 2147, 2148, 2149, 2150, 2151, 2152, 2153, 2154, 2155, 2156, 2157, 2158, 2159, 2160, 2161, 2162, 2163, 2164, 2165, 2166, 2167, 2168, 2169, 2170, 2171, 2172, 2173, 2174, 2175, 2176, 2177, 2178, 2179, 2180, 2181, 2182, 2183, 2184, 2185, 2186, 2187, 2188, 2189, 2190, 2191, 2192, 2193, 2194, 2195, 2196, 2197, 2198, 2199, 2200, 2201, 2202, 2203, 2204, 2205, 2206, 2207, 2208, 2209, 2210, 2211, 2212, 2213, 2214, 2215, 2216, 2217, 2218, 2219, 2220, 2221, 2222, 2223, 2224, 2225, 2226, 2227, 2228, 2229, 2230, 2231, 2232, 2233, 2234, 2235, 2236, 2237, 2238, 2239, 2240, 2241, 2242, 2243, 2244, 2245, 2246, 2247, 2248, 2249, 2250, 2251, 2252, 2253, 2254, 2255, 2256, 2257, 2258, 2259, 2260, 2261, 2262, 2263, 2264, 2265, 2266, 2267, 2268, 2269, 2270, 2271, 2272, 2273, 2274, 2275, 2276, 2277, 2278, 2279, 2280, 2281, 2282, 2283, 2284, 2285, 2286, 2287, 2288, 2289, 2290, 2291, 2292, 2293, 2294, 2295, 2296, 2297, 2298, 2299, 2300, 2301, 2302, 2303, 2304, 2305, 2306, 2307, 2308, 2309, 2310, 2311, 2312, 2313, 2314, 2315, 2316, 2317, 2318, 2319, 2320, 2321, 2322, 2323, 2324, 2325, 2326, 2327, 2328, 2329, 2330, 2331, 2332, 2333, 2334, 2335, 2336, 2337, 2338, 2339, 2340, 2341, 2342, 2343, 2344, 2345, 2346, 2347, 2348, 2349, 2350, 2351, 2352, 2353, 2354, 2355, 2356, 2357, 2358, 2359, 2360, 2361, 2362, 2363, 2364, 2365, 2366, 2367, 2368, 2369, 2370, 2371, 2372, 2373, 2374, 2375, 2376, 2377, 2378, 2379, 2380, 2381, 2382, 2383, 2384, 2385, 2386, 2387, 2388, 2389, 2390, 2391, 2392, 2393, 2394, 2395, 2396, 2397, 2398, 2399, 2400, 2401, 2402, 2403, 2404, 2405, 2406, 2407, 2408, 2409, 2410, 2411, 2412, 2413, 2414, 2415, 2416, 2417, 2418, 2419, 2420, 2421, 2422, 2423, 2424, 2425, 2426, 2427, 2428, 2429, 2430, 2431, 2432, 2433, 2434, 2435, 2436, 2437, 2438, 2439, 2440, 2441, 2442, 2443, 2444, 2445, 2446, 2447, 2448, 2449, 2450, 2451, 2452, 2453, 2454, 2455, 2456, 2457, 2458, 2459, 2460, 2461, 2462, 2463, 2464, 2465, 2466, 2467, 2468, 2469, 2470, 2471, 2472, 2473, 2474, 2475, 2476, 2477, 2478, 2479, 2480, 2481, 2482, 2483, 2484, 2485, 2486, 2487, 2488, 2489, 2490, 2491, 2492, 2493, 2494, 2495, 2496, 2497, 2498, 2499, 2500, 2501, 2502, 2503, 2504, 2505, 2506, 2507, 2508, 2509, 2510, 2511, 2512, 2513, 2514, 2515, 2516, 2517, 2518, 2519, 2520, 2521, 2522, 2523, 2524, 2525, 2526, 2527, 2528, 2529, 2530, 2531, 2532, 2533, 2534, 2535, 2536, 2537, 2538, 2539, 2540, 2541, 2542, 2543, 2544, 2545, 2546, 2547, 2548, 2549, 2550, 2551, 2552, 2553, 2554, 2555, 2556, 2557, 2558, 2559, 2560, 2561, 2562, 2563, 2564, 2565, 2566, 2567, 2568, 2569, 2570, 2571, 2572, 2573, 2574, 2575, 2576, 2577, 2578, 2579, 2580, 2581, 2582, 2583, 2584, 2585, 2586, 2587, 2588, 2589, 2590, 2591, 2592, 2593, 2594, 2595, 2596, 2597, 2598, 2599, 2600, 2601, 2602, 2603, 2604, 2605, 2606, 2607, 2608, 2609, 2610, 2611, 2612, 2613, 2614, 2615, 2616, 2617, 2618, 2619, 2620, 2621, 2622, 2623, 2624, 2625, 2626, 2627, 2628, 2629, 2630, 2631, 2632, 2633, 2634, 2635, 2636, 2637, 2638, 2639, 2640, 2641, 2642, 2643, 2644, 2645, 2646, 2647, 2648, 2649, 2650, 2651, 2652, 2653, 2654, 2655, 2656, 2657, 2658, 2659, 2660, 2661, 2662, 2663, 2664, 2665, 2666, 2667, 2668, 2669, 2670, 2671, 2672, 2673, 2674, 2675, 2676, 2677, 2678, 2679, 26



DIVISION OF RURAL MAIL

RECEIVED
MAY 18 1913

LOCATION OF PROPOSED POST OFFICE

Post Office Department
FOURTH ASSISTANT POSTMASTER GENERAL
Washington

October 3, 1912.

Mr. Wilbur R. Mallitt,
Murdo, South Dakota.

Sir: With reference to the proposed establishment of a post office at the point named below, and in order that the office, if established, may be accurately represented upon the post-route maps, it is requested that you furnish accurately the information called for below and prepare a sketch according to instructions on opposite side of paper, which should be returned to this Division as soon as possible.

Respectfully,
FOURTH ASSISTANT POSTMASTER GENERAL

The petition transmitted to the Department by Hon. Charles H. Burke and Hon. Eben W. Martin has been retained at this Office.

Proposed Post Office, (Name) Mallittville (County) Lyman (State) South Dakota

The name proposed for the post office is Mallittville

If the town, village, or site of the post office be known by another name than that of the post office, state that other name here:

The post office would be situated in the NW quarter of section No. 25, in Township 3-S, Range 2-E, of the 5th principal meridian, County of Lyman, State of South Dakota

The name of the nearest river is White River, and the post-office building would be at a distance of 20 rods on the South side of it.

The name of the nearest creek is Butch (Creek), and the post-office building would be at a distance of forty rods on the North side of it.

The name of the nearest office on the same route as this proposed post office is Murdo and its distance is 12 miles, by the traveled road, in a NE direction from the site of this proposed office.

The name of the nearest office on the same route, on the other side, is White River and its distance is 16 miles, in a South direction from the site of this proposed office.

The name of the nearest office not on the same route as this proposed post office is Okaton and its distance is 12 miles, by the traveled road, in a NE direction from the site of this proposed office.

The post-office building would be on the South side of the St Paul Railroad, and at a distance of eight miles from the track. The railroad station name is Okaton

The post office would be forty rods, air-line distance, North from the nearest point of my county boundary.

Signature of Applicant for Postmaster: Wilbur R. Mallitt
Date: Oct 3 1912

DIAGRAM, EXPLANATION, AND INSTRUCTIONS.

Indicate upon the diagram the proposed site of the post office by placing a dot in the proper quarter section.

The surrounding offices should be accurately located and the names plainly written.

Draw distinctly the railways, roads, rivers, and creeks.

The post office would be situated in the NW quarter of section No. 25 in Township 3-S, Range 2-E, of the 5th principal meridian.

In localities not surveyed by the U. S. Land Office, a sketch is requested.

PLOT SHOWING THE PROPOSED LOCATION OF THE POST OFFICE, WITH THE ADJACENT POST OFFICES, VILLAGES, ROADS, RAILROADS, MAIL ROUTES, RIVERS, AND CREEKS.

RANGE (3rd) (E. or W.) RANGE (3rd) (E. or W.) RANGE (3rd) (E. or W.)

(NORTH.)

TOWNSHIP (3rd) (S. or N.) TOWNSHIP (3rd) (S. or N.) TOWNSHIP (3rd) (S. or N.)

OKATON
MURDO
WHITE RIVER
BUTCH CREEK
WAGON ROAD
ST. PAUL RAILROAD
WHITE RIVER
MALLITTVILLE

(SOUTH.)

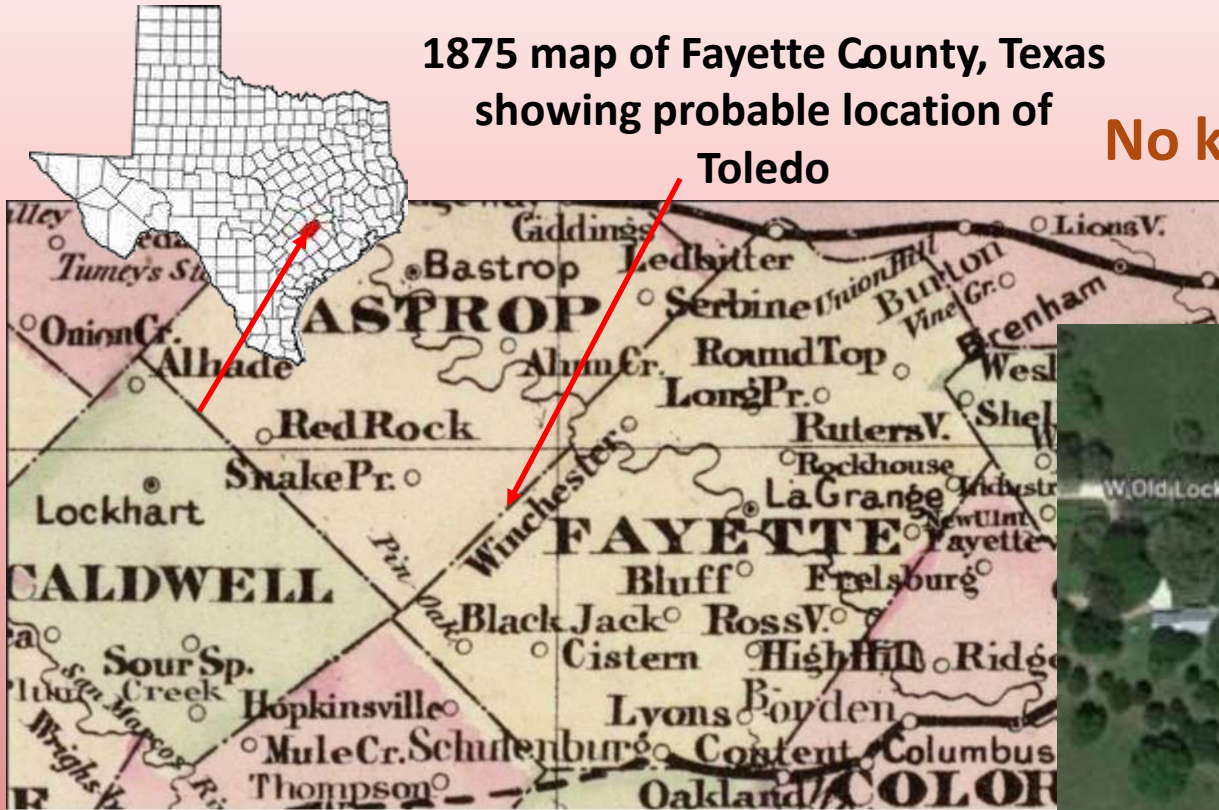
Scale, one-third inch to the mile.

Toledo, Texas — Fayette County

1875 map of Fayette County, Texas
showing probable location of
Toledo

No known postal markings from this office.

Ariel view of Stellar in Fayette County probable
location of Toledo Post Office in 1870s.



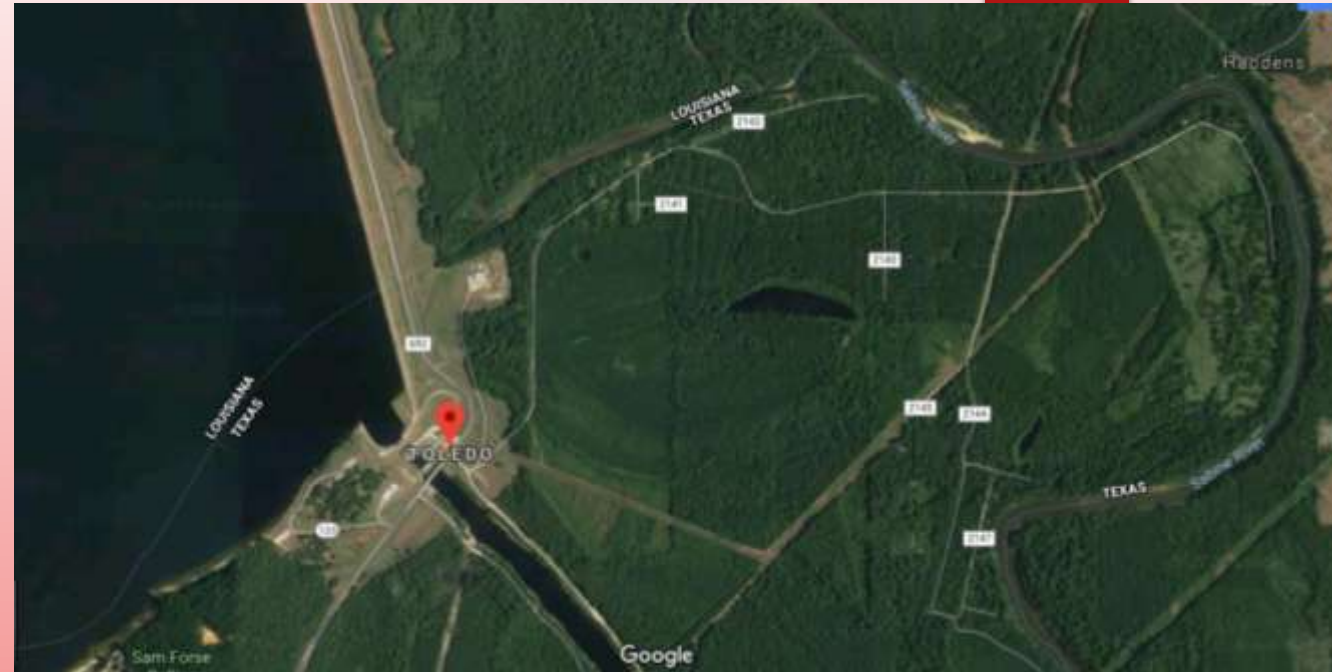
Postmark of Stellar, Texas.
Information on applications
for Post Office indicate same
location as Toledo. Stellar is
name picked when "Toledo"
was denied on application to
re-open office in 1880.



Toledo, Texas — Newton County



1891 Texas
Map Newton
County, location
of Toledo



3 scans of Toledo, Texas postmarks. Postmarks are all CDS with 4 bar killer and cover a 25 year period.



Toledo, Washington



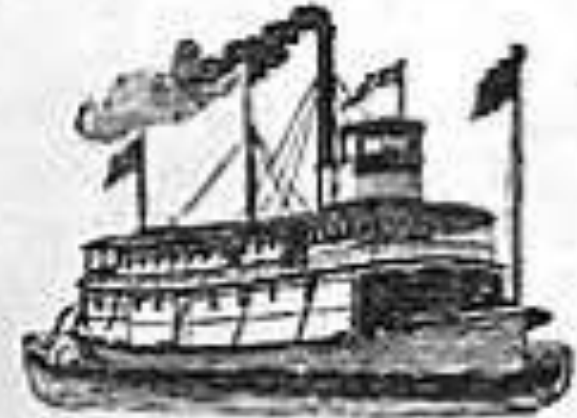
1891

Lewis County
W/location of Toledo

JOS. KELLOGG & CO's STEAMERS

For the Cowlitz River.

TOLEDO AND JOSEPH KELLOGG



STEAMER TOLEDO

LEAVES PORTLAND EVERY

Monday and Thursday at 7 A. M.

For Toledo and all intermediate points on the Cowlitz River.
Returning, Leaves Toledo every Tuesday and Friday for at 7 A. M.
for Portland and all Way Landings.

STEAMER JOS. KELLOGG

LEAVES PORTLAND EVERY

Tuesday, Thursday and Saturday

at 7 p.m. via Willamette Slough, for FIREPORT, landing at various
intermediate points. Returning leaves Fireport at 6 a.m.

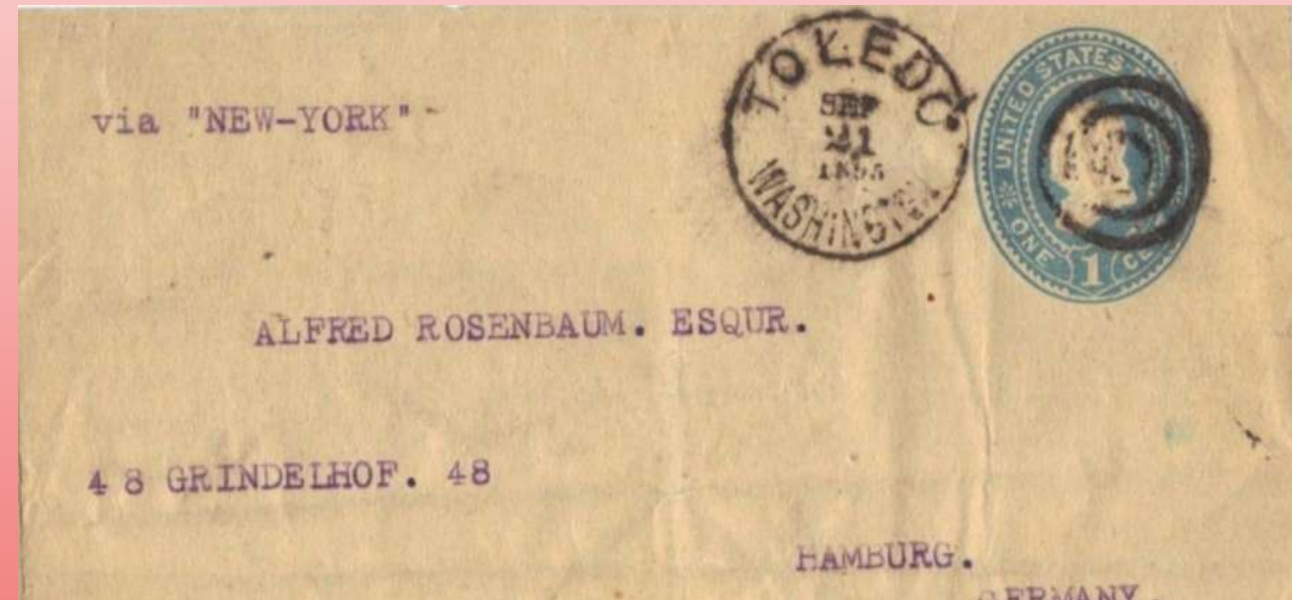
Monday, Wednesday and Friday

Toledo, Washington

Cover has picture of Toledo, Washington Post Office and a cancellation of October 18, 2017.



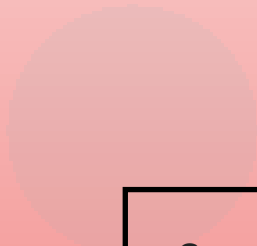
1895 Wrapper from Toledo, Washington to Hamburg, Germany Front only of 1 cent Plimpton stamped envelope. 26mm CDS with Target Killer.



Examples of Toledo, Washington pre-cancel applied to 2 cent Jefferson of 1954 Liberty issue and 1 cent Jefferson of 1965 Prominent Americans issue.



1999, 2000, 2001, 2002, 2003, 2004, 2005, 2006, 2007, 2008, 2009, 2010, 2011, 2012, 2013, 2014, 2015, 2016, 2017, 2018, 2019, 2020, 2021, 2022, 2023, 2024, 2025, 2026, 2027, 2028, 2029, 2030, 2031, 2032, 2033, 2034, 2035, 2036, 2037, 2038, 2039, 2040, 2041, 2042, 2043, 2044, 2045, 2046, 2047, 2048, 2049, 2050, 2051, 2052, 2053, 2054, 2055, 2056, 2057, 2058, 2059, 2060, 2061, 2062, 2063, 2064, 2065, 2066, 2067, 2068, 2069, 2070, 2071, 2072, 2073, 2074, 2075, 2076, 2077, 2078, 2079, 2080, 2081, 2082, 2083, 2084, 2085, 2086, 2087, 2088, 2089, 2090, 2091, 2092, 2093, 2094, 2095, 2096, 2097, 2098, 2099, 2100, 2101, 2102, 2103, 2104, 2105, 2106, 2107, 2108, 2109, 2110, 2111, 2112, 2113, 2114, 2115, 2116, 2117, 2118, 2119, 2120, 2121, 2122, 2123, 2124, 2125, 2126, 2127, 2128, 2129, 2130, 2131, 2132, 2133, 2134, 2135, 2136, 2137, 2138, 2139, 2140, 2141, 2142, 2143, 2144, 2145, 2146, 2147, 2148, 2149, 2150, 2151, 2152, 2153, 2154, 2155, 2156, 2157, 2158, 2159, 2160, 2161, 2162, 2163, 2164, 2165, 2166, 2167, 2168, 2169, 2170, 2171, 2172, 2173, 2174, 2175, 2176, 2177, 2178, 2179, 2180, 2181, 2182, 2183, 2184, 2185, 2186, 2187, 2188, 2189, 2190, 2191, 2192, 2193, 2194, 2195, 2196, 2197, 2198, 2199, 2200, 2201, 2202, 2203, 2204, 2205, 2206, 2207, 2208, 2209, 2210, 2211, 2212, 2213, 2214, 2215, 2216, 2217, 2218, 2219, 2220, 2221, 2222, 2223, 2224, 2225, 2226, 2227, 2228, 2229, 2230, 2231, 2232, 2233, 2234, 2235, 2236, 2237, 2238, 2239, 2240, 2241, 2242, 2243, 2244, 2245, 2246, 2247, 2248, 2249, 2250, 2251, 2252, 2253, 2254, 2255, 2256, 2257, 2258, 2259, 2260, 2261, 2262, 2263, 2264, 2265, 2266, 2267, 2268, 2269, 2270, 2271, 2272, 2273, 2274, 2275, 2276, 2277, 2278, 2279, 2280, 2281, 2282, 2283, 2284, 2285, 2286, 2287, 2288, 2289, 2290, 2291, 2292, 2293, 2294, 2295, 2296, 2297, 2298, 2299, 2300, 2301, 2302, 2303, 2304, 2305, 2306, 2307, 2308, 2309, 2310, 2311, 2312, 2313, 2314, 2315, 2316, 2317, 2318, 2319, 2320, 2321, 2322, 2323, 2324, 2325, 2326, 2327, 2328, 2329, 2330, 2331, 2332, 2333, 2334, 2335, 2336, 2337, 2338, 2339, 2340, 2341, 2342, 2343, 2344, 2345, 2346, 2347, 2348, 2349, 2350, 2351, 2352, 2353, 2354, 2355, 2356, 2357, 2358, 2359, 2360, 2361, 2362, 2363, 2364, 2365, 2366, 2367, 2368, 2369, 2370, 2371, 2372, 2373, 2374, 2375, 2376, 2377, 2378, 2379, 2380, 2381, 2382, 2383, 2384, 2385, 2386, 2387, 2388, 2389, 2390, 2391, 2392, 2393, 2394, 2395, 2396, 2397, 2398, 2399, 2400, 2401, 2402, 2403, 2404, 2405, 2406, 2407, 2408, 2409, 2410, 2411, 2412, 2413, 2414, 2415, 2416, 2417, 2418, 2419, 2420, 2421, 2422, 2423, 2424, 2425, 2426, 2427, 2428, 2429, 2430, 2431, 2432, 2433, 2434, 2435, 2436, 2437, 2438, 2439, 2440, 2441, 2442, 2443, 2444, 2445, 2446, 2447, 2448, 2449, 2450, 2451, 2452, 2453, 2454, 2455, 2456, 2457, 2458, 2459, 2460, 2461, 2462, 2463, 2464, 2465, 2466, 2467, 2468, 2469, 2470, 2471, 2472, 2473, 2474, 2475, 2476, 2477, 2478, 2479, 2480, 2481, 2482, 2483, 2484, 2485, 2486, 2487, 2488, 2489, 2490, 2491, 2492, 2493, 2494, 2495, 2496, 2497, 2498, 2499, 2500, 2501, 2502, 2503, 2504, 2505, 2506, 2507, 2508, 2509, 2510, 2511, 2512, 2513, 2514, 2515, 2516, 2517, 2518, 2519, 2520, 2521, 2522, 2523, 2524, 2525, 2526, 2527, 2528, 2529, 2530, 2531, 2532, 2533, 2534, 2535, 2536, 2537, 2538, 2539, 2540, 2541, 2542, 2543, 2544, 2545, 2546, 2547, 2548, 2549, 2550, 2551, 2552, 2553, 2554, 2555, 2556, 2557, 2558, 2559, 2560, 2561, 2562, 2563, 2564, 2565, 2566, 2567, 2568, 2569, 2570, 2571, 2572, 2573, 2574, 2575, 2576, 2577, 2578, 2579, 2580, 2581, 2582, 2583, 2584, 2585, 2586, 2587, 2588, 2589, 2590, 2591, 2592, 2593, 2594, 2595, 2596, 2597, 2598, 2599, 2600, 2601, 2602, 2603, 2604, 2605, 2606, 2607, 2608, 2609, 2610, 2611, 2612, 2613, 2614, 2615, 2616, 2617, 2618, 2619, 2620, 2621, 2622, 2623, 2624, 2625, 2626, 2627, 2628, 2629, 2630, 2631, 2632, 2633, 2634, 2635, 2636, 2637, 2638, 2639, 2640, 2641, 2642, 2643, 2644, 2645, 2646, 2647, 2648, 2649, 2650, 2651, 2652, 2653, 2654, 2655, 2656, 2657, 2658, 2659, 2660, 2661, 2662, 2663, 2664, 2665, 2666, 2667, 2668, 2669, 2670, 2671, 2672, 2673, 2674, 2675, 2676, 2677, 2678, 2679, 2680, 26



1897 West Virginia map with location of Toledo



