

Philatelic Society Of Lancaster County



T. Kensett & Co. Pg-3



The James Buchanan Chapter (#173) of the American Philatelic Society
American Topical Association-Chapter 118
Website: <https://lpcs-stamps.org>

**Please note that all meetings are virtual starting at 6:15 p.m.
Wednesdays, 13 and 27 July, 2022**

The Veranda Chronicles

I can't believe that the summer will soon be halfway over. For me, the MLB All-Star game is the mid-point of our warm and wonderful holiday. I hope that you are making the best of your summer with travel, reunions, and all as safely as you can. At work we are already seeing a summer surge of Covid-19 with the latest variant. Please be careful, as we don't want to lose any PSLC members and friends.

The planning for the summer picnic is in full gear, and organizers are telling me that there will be a lot going on, with a silent auction for donated items as well as, for the first time, a separate but silent auction for members only. As always there will be lots of door prizes and give-away items. You'll be well informed as time nears.

The club received a nice donation of literature late last year, which Paul picked up, about a dozen boxes, all indexed. Since I have the room and the start of the PSLC library at my home, I will house this new material and serve as club librarian. It will be called *The Philatelic Society of Lancaster County (PA) Philatelic Hard Copy Reference Library*. I am compiling the lists, and when ready,

it will be posted on the website along with a special issue of the newsletter.

There are great titles, really classic ones along with early literature including many years of *Linn's Stamp News* starting with #1. So stay tuned. These will all be available for borrowing by club members.

Club-wise, our Society is strong. And we are ahead of others across the country as I poll my colleagues. Many are receding, consolidating and/or closing shop.

The PSLC takes a modern, open door, and engaging approach to philately. We are leveraging current technologies (a dynamic Website, YouTube, and Facebook presence) to communicate, promote, and spotlight our programs, resources, etc. and to engage members of all ages on a myriad of topics (historic and current) of interest to all far and wide. Our meeting programs attract visitors at every session, and some have become members. We are now scheduling our presentations for 2023, so let us know when you have something you would like to share with us. In the meantime, enjoy, *CJDi*

13 July 2022 at 6:15 p.m.

July 13: "USS Local," by **Ron Breznay**

This evening's presentation examines covers from U.S. Navy ships that are named after places in the Wilkes-Barre area. Presenter Ron Breznay was born in Wilkes-Barre and lived in one suburb or another for most of his life. After he did an eBay search for Wilkes-Barre items, he became interested in these naval covers and came across a *USS Wilkes-Barre* cover. He then started adding *USS Pennsylvania* covers and became inspired to look into just how many ships are named after local places, such as the Susquehanna River and the Appalachian Mountains. The presentation displays not only covers but also shows photos of the vessels along with ship information, ephemera, and detailed stories and statistics of all these vessels.



27 July 2022 at 6:15 p.m.

The American Philatelic Society and the State of the Hobby, by **Scott English**



Scott English, Executive Director of the American Philatelic Society will discuss how the APS is leading the membership modernization initiative. In the past two years, the APS has accomplished recruitment and membership changes not seen for decades. Specifically, Scott will address the website overhaul, library digitization, and building an active online education platform for collectors. And this is just the beginning. There will be time for questions and comments from club members and visitors. So get your questions ready, and join us for this most informative session.

Volume 85, No. 7

July, 2022

**Visitors are Always
Welcome**

PSLC meets virtually on the 2nd & 4th Wednesdays at 6:15 p.m. Dues are \$10.00 a year. For club information and meeting links, contact **Paul Petersen** (See contact info below)

Website: [LCPS-Stamps.org](https://lpcs-stamps.org)

PSLC Officers and Board

President, Web

Developer & Designer:

Charles DiComo 914-450-3791
charlesdicomo@gmail.com

1st Vice President:

John Hostetter, 717-394-9626
jhostetterjr@gmail.com

2nd Vice President:

Bill Greiner, III 717-471-2354
sunfighter@verizon.net

Secretary:

David Weichert, 717-342-3120
stampsbydave@gmail.com

Treasurer:

Lou DiFelice, 717-572-3419
loudfelice@gmail.com

Publicity:

Len Kasper, 717-723-1864
hetrodparts33@aol.com

Membership:

Barb Buchanan, 717-871-0244
tallwood@comcast.net

Newsletter Editor:

Programs & APS/ATA rep:
Paul Petersen, 717-299-5640
pcpetersen@comcast.net



Above: **Dr. DiComo** is the Pied Piper of U.S. Private Die Proprietary Revenue Stamps.

Erratum

In the summary of Alan Warren's presentation on Tibetan Stamps and Postal history which appeared in the June issue, it was incorrectly stated that the third issue of stamps (1933) was printed using metal plates. The correction is that the 1933 issue of five (5) stamps was still made of wood, but the difference was that each stamp was a wooden cliché held together with a leather thong, to make a sheet of 12.



The metal printing plates were not used until the telegraph stamps of the early 1950s. A pair of 1 sang telegraph stamps appears above.

Air Mail Etiquettes

There was an informative article in the November, 2021 *The American Philatelist* by Art Groton on the topic of these attractive blue mailing labels that have been in fashion from almost the beginning of the first serious use of Air Mail. Groton included illustrations of various related postal history covers.



Shortly after, I received the above picture postcard from our mail carrier friend, Frances in the Northwest. It is a medley of these etiquettes, about 65 in all. I accumulate these when I can, and Groton's article encouraged me to inventory my stock. I own about a dozen shown on this postcard, and have another half dozen that are not represented here. It was a fun exercise to make the comparisons. Now I am on the hunt for a few more. It is just a shame

that this card received two significant scuffs (one is dead center and the other is in the lower left corner) while in route across the country. Of all the ways that stamps, covers, and PPCs can be damaged, Mz. Ed hates scuffs the most.

PSLC Lunch in Springfield



On 8 June, some club members met up for lunch in Springfield, PA with Larry Rosenblum while on an East Coast trip. He is PSLC's most distant member hailing from just north of San Jose, CA. He joined the club early in Covid-19 when we went virtual. He visited to hear Dick Colberg's presentation on French Balloon Mail and has been with us ever since. He has given a feature presentation on one of his areas of expertise, the *French Definitives of the 20th Century* and has had displayed other items of interest for the Show, Tell, & Ask sections of our meetings.

It was fun putting a real face with a Zoom image and getting to know Larry better. The club prepared a swag bag for him. This contained some Lancaster corner cards, Lancopex covers, early city airmail covers, vintage Lancaster PPCs, and a James Buchanan item or two. It was capped off with a Lancaster Barnstormers baseball cap.

The Event was held at Tavola's at the Springfield Country Club, and this was an outstanding recommendation from Bob Kotanchik. In the above picture are (from left to right) Paul Petersen, Larry Rosenblum, Cathy Kotanchik, and Bob Kotanchik.

Batting Clean-up

Mark Schwartz had two successful exhibits at the recent NAPEX show in Tyson's Corners.

Single Frame: *A Postal History of Gloucester, Massachusetts and its Environs to 1851* won a •Gold Award.

Multi Frame: *The 5¢ Virginia Dare Stamp of 1937*. This won a •Large Gold Award and two (2) sponsored awards including: •The American First Day Cover Society Award and •The NAPEX Stephen Luster Award. Congrats Mark on some great hitting in another good game.

Ave et Vale

Dick Colberg notified the editor of the passing of Glenn Blauch, a long time collector with a special interest in the postal history of Lebanon Co. He was active in the Pa.P.H.S. and LSCC.

Club Notes

Programs & Shows 2022 Programs

(Description of many of these programs are on the PSLC website.)

13 July: USS Local. Ron Brezney

27 July: State of the Hobby. Scott English

10 August: Club Picnic. Freedom Memorial Park, Millersville

24 August: Toledos of the World. David Plunkett

14 September: Postal History Research Resources. Steve Kennedy

28 September: Pure Adulteration. Ron Leshner

12 October: U.S. One-half Cent Issues. David Hunt

26 October: My Grandfather was a Postmaster. Rick Barrett

9 November: Elie Beatty-Cashier of Hagerstown Bank 1807-1859. Steve Kennedy

23 November: Over-view of Semi-Postal Stamps of the Philippine Islands. George D. Hauber, Sr.

14 December: Why Postcards Matter. Dawn Hamman

28 December: Blood Donation on Stamps & Covers. Ken Martin

2023 Programs

11 January: TBA

25 January: British Inland Airmail, 1933 to 1955. M. Bach

8 February: TBA

12 April: Dining Cars-Epicurean Pleasure on the Rails, Bill Schultz

Events

25-28 August: The Great Am. Stamp Show, Sacramento, CA

24 September: Harrisburg Club. Lower Swatara Firehouse, 1350 Fulling Mill Road, Middletown

5 November: Reading Stamp Collectors Club, Leesport Farm Market, Route 61 just north of Leesport. Map-Quest: 312 Gernants Church Road.



8 June 2022 Minutes & Treasury

Paul Petersen Acting Sect'y and Lou DiFelice, Treasurer

Opening: Dr. DiComo opened the meeting at 6:32 p.m. and shared about the addition of newsletters and other outside club information to our website. He reminded us all of the Some Sunday Stamp Show on 19 June.

Treasurer's Report: Lou DiFelice
(1 to 31 May 2022)

| | |
|-----------------|-----------|
| Opening: | \$3421.36 |
| Income: | \$270.00 |
| Expenses: | \$169.33 |
| Ending Balance: | \$3522.03 |
| CDs: | \$6015.58 |

Lou noted that for the first in a long time, the posted interest earned on our club's CDs has increased, this time it's >\$6K.

Club Business: Paul Petersen reported that some club members met for lunch today with Larry Rosenblum, our club member from California (*Ed's note: See details on page-2*)

Paul also noted that plans for the August picnic and September Barnstormers game are in progress. More will be forthcoming as time gets near.

NAPEX: Al Schaub reported on this past weekend's show. It was well-attended with some great exhibits, and he found a dealer or two with good stocks of naval covers. He recommended that the club form a committee of those members interested in resuming our club bus trips to regional shows, APS, and the National Postal Museum for example.

Attendance: +/-30

Approval of the Treasury and Minutes of the May newsletter. This was approved by screen vote.

Feature Presentation: *The T. Kensett & Company and their RP1a Private Die Proprietary Stamp Issue-Dr. DiComo*



In 1862 to pay for the Civil War, the U.S. government produced revenue stamps for the collection of taxes for certain services and some manufactured products. They also allowed companies of certain manufactured goods the option to design custom revenue stamps for their product. These are private die proprietary stamps.

These could contain advertising and logos with their own custom design. The only requirement for the stamp was the correct denomination and imprint: U.S. Internal Revenue. Canned fruit was one of the five (5) proprietary products taxed. Only the T. Kensett Co. elected to have private die stamps made for their canned fruit. In this revenue group there is only one stamp, designated by Scott as RP1a, the subject of tonight's presentation. Dr. DiComo shared that he came across one of these stamps, which ignited his interest to explore T. Kensett & Co. and the stamp itself. Further he revisited the 1994 Aldrich census of the 27 extant RP1a issues. Since that time 12 more have been discovered raising the total to 39. He went into great detail regarding the '94 census with the additional twelve issues. He has images of each RP1a stamp.

As could be seen on the slides, at least 35 of these 39 stamps were faulty due to the fact that they had to be removed from the tin can prior to opening, a practice common at the time to invalidate the stamp in prevention of reuse. And he believes more are out there in folks' collections and accumulations. Please let him know if you have any information on this issue.

This T. Kensett & Co. private die proprietary stamp is the only one created for canned fruit, the only stamp with the RP1 designator. No other fruit company requested/created one. This was printed by Butler & Carpenter in Philadelphia then issued on 3 January 1867.



T. Kensett & Co. issued 528,000 RP1a revenue stamps, and they were only in service for a few months in early 1867 until the tax on canned goods was repealed. Prior to using this stamp, they had used the R3c 1¢ red proprietary stamp with a variety of overprints. He showed an image of the unique trial color proof RP1TC1 in B&W by Butler & Carpenter. Dr. DiComo provided some interesting background information on the T. Kensett & Co. and the processing of canned fruit. They also canned oysters.

Show, Tell, and Ask:

Dan Martin is reading a book about airmail and shared a story of the carrying of mail in a balloon in France in 1785.

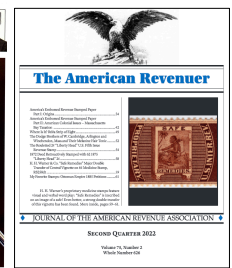
Closure: The meeting ended at 8:10 p.m.

The Cover Guys

Just this month, two members' publications were cover features of their respective journals. Congratulations, gentlemen.

In *Linn's Stamp News* (18 July, the monthly glossy edition, **Rob Rufe** published "The End of an Era: 97 years of U.S. Special Handling Service Comes to a Close on July 10." Bob has been the top researcher in special handling for years. (Left Image)

Dr. DiComo has the cover story in *The American Revenuer* (2nd Quarter, 2022) entitled H.H. Warner & Co. "Safe Remedies" Major Double Transfer of Central Vignette on 6¢ Medicine Stamp RS258dt. (Right Image)



Postal Rate Increase on 10 July

Letter: From 58¢ to 60¢

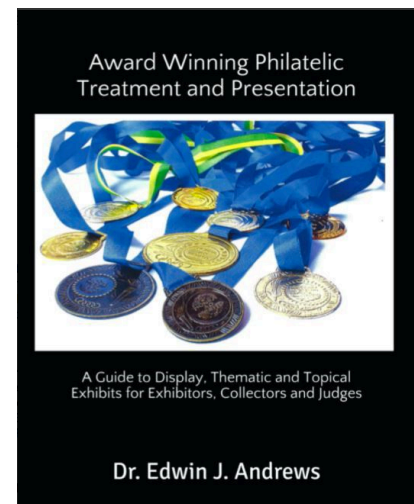
Post Card: From 40¢ to 44¢

Additional Ounce: From 20¢ to 24¢

Int'l Letter/Postcard: From \$1.30 to \$1.40

New Reference for Topical and Thematic Exhibiting

As the subtitle states, this book is meant for exhibitors, collectors, and judges of all things topical and thematic.



With the surge in topical collecting and exhibiting, Dr. Edwin Andrews, a winner of 62 large gold and 8 grand awards spells out the best practice from research to writing, planning, and mounting exhibits with details, tips, and even some traps to avoid. There are also special ways to mount 3-D items.

22 June 2022 Happenings

Opening: Paul Petersen started the meeting at 6:30 with a welcome to members and visitors. Being the second meeting of the month, there is no quasi-formal business meeting as during the first monthly meeting.

Announcement: Dick Colberg said that he is planning the monthly programs for the Lebanon Club. This meets at the city's library on the third Tuesday of the month. These meetings are in-person-only events, and there is no PowerPoint capability. Since this is usually a smaller group, the size is right for passing items around the table as the discussion is held. Please contact Dick if this is a possibility. The Lebanon Club is supportive of PSLC, and this way, we can return some of the cheer to one of our sister clubs. Dick's email is appraisestamps@gmail.com.

Approximate Attendance: +/-25

Feature Presentation: Mexican Express Company Envelopes-Dick Colberg

Dick displayed a map of Mexico denoting the catchment areas of the three Express Company's zones of service. All three overlap with the capital, Mexico, DF. One of the main reasons for customers choosing the Express service was for timeliness of the delivery. Dick's covers are postmarked in the 1880s and 1890s with a few in the very early 1900s.

Express mail delivery augmented that of the Mexican PO. Express companies would purchase postal stationery from the PO and add their company's logo to the left upper corner of the envelope, and make it available to their customers. This logo often included the cost, and sometimes this is overprinted or revalued. The result is two frankings on every cover, one for the Express Company, the other for the Mexican PO.

Express companies used their own cancelling devices with the company name, date, and town. Not all covers received cancels from both the PO and Express Company. Sometimes it was only the Express cancel on its logo, on PO indicia and/or both.

The challenge of collecting these covers is that over time, many combinations and permutations have materialized. Elements included varieties in the Express and PO indicia, paper types, overprints, instructive hand stamps, and cancellations.

This is a collecting area for those interested in rates, routes, and varieties of paper and auxiliary markings.

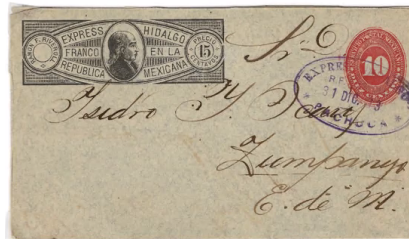
Of Dick's 83 covers, 40 were addressed. Of these addressed covers all but one (39) were cancelled. In the cancelled covers, some had cancels on the Mexican PO

indicia only. On others both the company indicia/logo and Mexican indicia were cancelled with the Express Company's cancel device.

Typically a full address includes a recipient's name, the street address, and the city name. However, on several covers, only a name and a city name (Mexico or Monterey) were indicated. In the small towns, it was easy to locate an individual.



Wells Fargo (↑), the largest, is an American company. Dick showed 56 from his collection. Nineteen were addressed, and of these, five (5) were international, that is, conveyed to San Francisco.



The other two Express Companies were Hidalgo Express (↑), (19 covers)



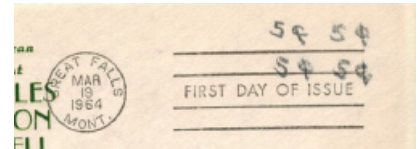
and Mexican National Express (↑), (8 covers).

Rates are determined by the weight of the cover and the cover's destination. Examples of a variety of postal rates were shown occurring over time. And in these the added cost of the express service was about 50% to 75% higher than the Mexican postage cost. Roughly the price of using the express service was a little over double the PO price.

Show, Tell, and Ask

George Hauber Sr. had a short PowerPoint with three covers of interest. One displayed an FDC of the 1974 Christmas stamp, the first self-adhesive. Inside was a printed note saying that the order is being held until the stamps are issued!

The second was an FDC of the stamp for Western artist Charles Russell (1243) issued on 19 March 1964. This was sent for servicing with a request for a block of 4, and it was cancelled without any stamps at all! (♥) The cover addressed to the same person with a single stamp had both the stamp and the First Day Cancel.



George's third cover was the 250th Anniversary of Lancaster County with a LCPS (our club) cancel on 10 May 1979. Inside was a printed proclamation with an invitation to the community for a celebratory community day later that month. Details were included. (♥)



RD Noble has a 26 December 1892 cover from Durlach, PA, a dead PO near Stevens, PA. In the cancel, Durlach is spelled ending with a -k, not an -h.



Jim Strycharz shared some information on the Harrisburg PO as presented in the 1801 U.S. Almanac of Harrisburg. (♥)

