



The **Overprint**

Newsletter of the Reading Stamp Collectors' Club

Editor: Stan Raugh, 4217 8th Avenue, Temple, PA 19560-1805 Tel: 610-921-5822

Email Editor: Michael Bach, 12 Colorado Avenue, Sinking Spring, PA 19608 Tel: 610-937-2826

Issue: MAY - JUNE 2022

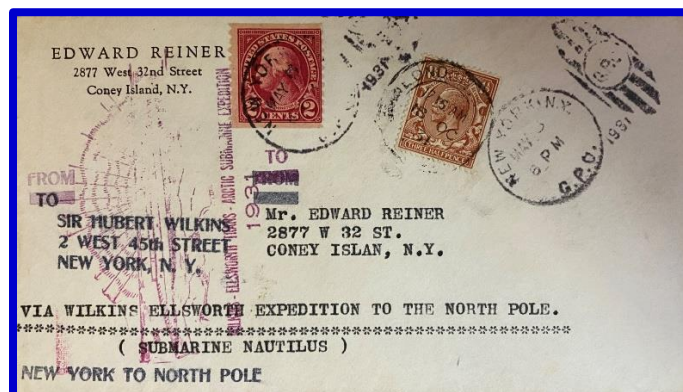
NEXT MEETING : TUESDAY MAY 3rd at 7:00 pm
Social Time from 6:30 pm onwards

Editor's Update:

Our second meeting of 2022 is at our new location Calvary Lutheran Church in Laureldale. Thanks to the wonderful "angels" at Calvary Lutheran and the legwork done by Pete Baney, we have a meeting place!

The church is located at 1009 Elizabeth Avenue in Laureldale. Elizabeth Avenue crosses Kutztown Road in the Muhlenberg Township area. Find Kutztown Road and turn east on Elizabeth. The Hershey Harvest, a small popular farmy-type country store is on the corner where you turn onto Elizabeth Avenue. Elizabeth changes to a one-way road going east at that point. The church is about two blocks on the left.

Meeting Topic: Wilkins-Ellsworth Expedition to the North Pole by Submarine: Presenter Mike Bach



IMPORTANT NOTICE:

We need members to do presentations in June and July. So if you have something please contact Dave Hunt ASAP. (email: dhhunt@ptfprolog.net) . Also, we need volunteers for snacks.

RSCC Treasurer's Report:

Current Account: \$ 2,352.63 as of 03/31/2022 : CD \$ 3,174.14 as of 12/31/21

Dues for 2022 are NOW DUE: If you have already sent me a check..Thank You.
IF NOT: Please send check payable to RSCC to my address above as soon as poss
Many Thanks, Mike

Paper Shortages in The South Created Interesting Civil War Collectibles by Stan Raugh



No matter what the reason, shortages in supply can result in historical remembrances. Remember the gas lines in the seventies (I think they were in the 1970's)? Shortages and rumors of shortages have returned!

In the Civil War South, there were many scarce commodities and paper was one of the worst. Above is a wallpaper cover. The sender was a successful businessman, reduced to using decorative paper to make an envelope. Folks also used newspapers, railroad timetables and other printed materials for envelopes and writing paper.

Another trick was to "turn" an envelope inside out and reuse it. Sometime, used writing paper was turned sidewise and a new letter written through the lines of the first one! I looked at several of those and it gives me a headache just to see them! Our hobby documents human history!

RUSSIAN WARSHIP STAMP BECOMES A COLLECTOR'S ITEM

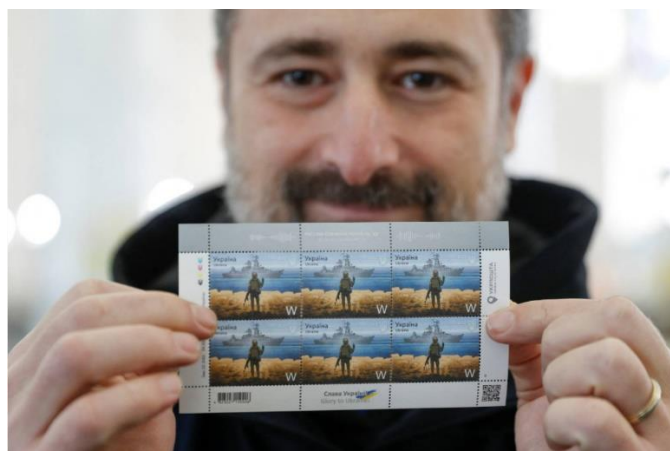
Courtesy of the Rainbow Stamp Club



On April 12, 2022, Ukrposhta presented and put into circulation the first in martial law conditions postage stamps with a “Russian warship, go...!” slogan. This phrase is the response of Ukrainian border guards, defenders of Zmiinyi Island, to the Russian’s ship offer to surrender on the day of the Russian invasion of Ukraine on February 24, 2022. It became a symbol of courage and indomitable spirit of the Ukrainian people in the fight against Russia. Unfortunately, the legendary phrase was censored for official postal products.

In Kyiv, a special cancellation with the First Day marking took place at the Main Post Office with the participation of Ukrposhta Director General Ihor Smilianskyi and the author of the phrase, the defender of Zmiinyi Island Roman Hrybov. At the same time, cancellations of special stamps “Russian warship, go...!” took place in all regions of Ukraine.

Crimean Borys Grokh, the author of the sketch of the First Day postage stamp and envelope and the winner of the people’s contest for the best postage stamp sketch, took part in the special cancellation ceremony in Lviv. Borys’s work garnered the most votes, with 8,000 Facebook and Instagram users voting for it. Until 2014, Boris lived in Evpatoria. After the occupation of Crimea, he was forced to move to Lviv.



“Ukrainian philately during the war is a reflection of the events happening to our state and our people. The phrase that inspired us to create a postage stamp has already become a symbol of the invincibility of the Armed Forces, volunteers, Territorial Defense, all Ukrainians in the struggle for their land and independence of Ukraine. I am sure that both Ukrainians and our friends from abroad will be happy to receive letters with such a postage stamp. And today, in such a postal way, we once again remind the occupiers that they should immediately leave our land and follow their ship,” said Ukrposhta General Director Ihor Smilianskyi.



Postage stamp “Russian warship, go...!” issued by Ukrposhta in two denominations – to pay for postal items in Ukraine (face value F, equivalent to UAH 23) and to pay for items sent abroad (face value W, equivalent to US \$ 1.5). The corresponding First Day envelope was issued for the stamp in 20 thousand copies.

Buy postage stamps “Russian warship, go...!” available in Ukrposhta branches and in the [philatelic online store](#). Currently, philatelists from around the world seem to have almost overloaded the online store of Ukrposhta, it works very slowly.



Permanent Pictorial Cancellation St. Mary's Island, India

[St. Mary's Islands](#), are a set of four small islands (Coconut Island, North Island, South Island, and Dar-yabahadurgarh Island) in the Arabian Sea off the coast of Malpe in Udupi, Karnataka. According to folk legend, in the year 1498, [Vasco da Gama](#) landed at St. Mary's Islands on his journey from **Portugal**, fixed a cross on the island, and named one of these islands, **O Padrão de Santa Maria**, as a dedication to Mother Mary, before proceeding to Kozhikode in Kerala. It is from this name that the islands got their current name. There is no habitation on these islands.

Out of the 4 islands, the northernmost island has a [Basaltic rock](#) formation in a **hexagonal form**, the only one of its type which is seen in India's St. Mary's Island, Malpe. Scientific studies indicate that the basalt of the St. Mary's Islands was formed by sub-aerial subvolcanic activity. Till around 88 Mya, Madagascar was attached to this island.

The islands form one of the four geological monuments in Karnataka state, one of the 34 [Geological Monuments of India](#) declared by the Geological Survey of India in 2001. The monument is considered an important site for "**Geo Tourism**".



On 17th January 2015, India Post introduced permanent pictorial cancellation which depicts the hexagonal unique rock formation. Thanks to the India post, recently they have adopted self ink cancellation from the conventional one. Because of that, the cancellation is better and clear.

Thanks to Mr. Shashwath, MTS - Malpe office, who helped me with the cancellation. Those who want this PPC can write to "The postmaster, Malpe post office, Malpe, Pincode - 576108".

Centenary of the Death of Sir Ernest Shackleton on Jan 5th 2022

The British Antarctic Territory, Falkland Islands and South Georgia & the South Sandwich Islands have joined together to commemorate the centenary of the death of the great polar explorer Sir Ernest Shackleton (1874-1922) as well as Great Britain.



Shackleton rose to fame in 1915 when his vessel, the *Endurance*, became trapped in pack ice and sank. Against all the odds, Shackleton succeeded in getting all his men back to safety, a tale of resolve and selfless leadership that is celebrated as one of the greatest stories of human Endeavor.

A century after his death his fame continues, yet his popularity is a relatively modern phenomenon. From the 1980s onwards various biographies and historic accounts of the polar expeditions saw Shackleton catapulted to stardom, something that was fleeting in his lifetime.

Each of the territories have issued four stamps, reflecting different moments in the explorer's eventful life, including the *Nimrod* expedition and the Shackleton-Rowett expedition.



It seemed very timely that Shackleton's vessel The *Endurance* was located in March of 2022 and so the next article is a little bit about where and what was found

Wreck of Shackleton's 'Endurance' Discovered in Icy Antarctic Depths from the Smithsonian Magazine by Nora McGreevy, Daily Correspondent

A team of researchers has discovered the wreck of Ernest Shackleton's *Endurance* vessel on the Antarctic sea floor. Carried out by the Endurance22 Expedition and announced this week by the Falklands Maritime Heritage Trust, the exciting discovery puts an end to a century-old maritime mystery.

Scientists used submersibles to capture images and video of the shipwreck, which is protected as a historic site and will remain undisturbed, Henry Fountain reports for the *New York Times*. It rests 9,842 feet below the surface of the Weddell Sea, a pocket of the Southern Ocean east of the Antarctic Peninsula, reports Lilit Marcus for CNN. "We have made polar history with the discovery of *Endurance*, and successfully completed the world's most challenging shipwreck search," says expedition leader John Shears in a statement.



Endurance was last seen in 1915, when Irish-British explorer Shackleton (1874-1922) and his 27 men watched in dismay as the ship sank into the icy depths. The crew's mission, as members of the Imperial Trans-Antarctic Expedition, was a daring plan to reach the South Pole by traveling over the then-unmapped terrain of the East Antarctic.

Charismatic, reckless and obsessed with the South Pole, Shackleton was a major figure in what came to be known as the heroic age of Antarctic exploration in the early 20th century, "which included treks by Norwegian Roald Amundsen, who in 1911 was the first to reach the pole, and by Robert Falcon Scott, a Briton who died after reaching it a month later," per the *Times*. Shackleton and his crew set off from South Georgia island in 1914 despite warnings from whalers that the ice conditions in Weddell Sea were some of the "worst in memory," per the American Natural History Museum.



As spring arrived in the southern ocean, ice began to crush *Endurance* and damage the ship beyond repair. Photo by Frank Hurley / Scott Polar Research Institute, University of Cambridge / Getty Images
Disaster struck in 1915 when the ship became trapped in the pack ice. For ten months, the immobilized vessel floated along while crew members camped on ice floes and waited for their surroundings to thaw. But as spring arrived in September, the pressure of the shifting ice began to warp, crush and twist the boat's wooden frame. By October, the ship had flooded beyond repair and all hopes of a return trip were lost, as Kieran Mulvaney reports for *History.com*. "She's going, boys," a crewmember reportedly cried in October as the hull was rent to pieces. "It's time to get off." The ship eventually slipped beneath the surface on November 21, 1915. Shackleton's subsequent voyage to rescue his crew went down in history as one of the greatest examples of grit, leadership and luck in the annals of Antarctic expeditions. First, the crew survived a harrowing five days at sea to land three lifeboats at Elephant Island, where they set up a makeshift camp. Shackleton and five others then navigated a treacherous 800-mile journey on a small whaling boat to reach help on South Georgia island. That open-sea journey, navigated by Capt. Frank Worsley, is considered "one of the epic small boat voyages ever undertaken across some of the steepest, harshest seas in the world," according to scholar Julian Dowdeswell. Thanks to Shackleton's efforts and those of his crew, all 28 men survived and were rescued in 1917.

Biographers and historians have chronicled the details of the *Endurance* saga for years. But the precise location of the wreck of the *Endurance* itself remained a mystery—until now. With contemporary technology at their disposal and captain Worsley's notes in hand, *Endurance22* set out in February to discover the site of the *Endurance* wreck.

The team traveled aboard the *S.A. Agulhas II*, a South African icebreaker and polar research vessel. The \$10 million project was funded by an anonymous private individual, according to the *Times*.

They searched for two weeks, using two submersible crafts to scan the sea floor in a 150-square-mile area. Researchers discovered the first signs of the shipwreck a few days ago, per the *Times*. The site where *Endurance* eventually sank turned out to be just four miles south of where Worsley, the ship's captain, had predicted it lay, per CNN.

Cold Antarctic temperatures have kept the 144-foot, three-masted wooden ship in stunning condition, scientists report. Images reveal that the bold capital letters of the ship's name are still intact and visible above the stern. "Without any exaggeration this is the finest wooden shipwreck I have ever seen—by far," marine archaeologist and expedition director Mensun Bound tells [BBC News'](#) Jonathan Amos.

"It is upright, well proud of the seabed, intact, and in a brilliant state of preservation," Bound adds. "You can see a porthole that is Shackleton's cabin. At that moment, you really do feel the breath of the great man upon the back of your neck." Others described an ecstatic mood onboard when the team discovered the wreck. "I got goose bumps," wrote [Stefanie Arndt](#), a sea ice physicist who participated in the expedition, on [Twitter](#). When the wreck was first spotted, she was at work with fellow researchers on the ice nearby—"just where Shackleton's men have been."

"The footage is breathtaking," Arndt added. "I am overwhelmed."

GREAT BRITAIN: MACHINS WITH BAR CODES ARE HERE TO STAY

Royal Mail issues Machin definitives to meet new postal rates on Apr 7, 2022, (From Linn's Stamp News online by David Hartwig)

On April 4, Great Britain's Royal Mail issued 14 definitive stamps to meet new postal rates that went into effect on that date (*Linn's*, April 4, page 42). Additionally, each stamp features a barcode as part of Royal Mail's new policy to issue definitive stamps with barcodes.

Included in the April 4 issue are four international-rate stamps, seven low-value definitives and three high-value definitives. The stamps depict the bas-relief portrait of Queen Elizabeth II by Arnold Machin that has been used on Britain's definitive stamps since 1967. These definitives are known as Machins.

The denominations and colors of the international-rate stamps are £1.85 wood brown, £2.55 sapphire blue, £3.25 purple and £4.20 light green.



Issued on April 4th 2022

The £1.85 stamp pays the rates for letters to Europe weighing up to 100 grams and for letters to other countries weighing up to 20 grams. The £2.55 stamp is for worldwide letters up to 100 grams. The other two stamps pay rates for large letters (up to 35.3 centimeters long, 25cm wide and 2.5cm thick) weighing up to 100 grams: £3.25 to Europe and £4.20 to the rest of the world. The color scheme is reversed on the low-value Machins, with the portrait of the queen in color against a white background. The denominations and colors of the low-value Machins are 1p sapphire blue, 2p dark green, 5p purple



Issued on April 4th 2022



Issued on February 1st 2022

It is interesting to note that 10 stamps have departed from the traditional solid color background

.....AND FINALLY SOME ODDBALL STAMP ISSUES:

FROM FINLAND:

Karlfazer - The Finest Finnish Chocolate !



This beautiful stamp issued by Finnish Post celebrating 100 years of famous Finnish Chocolate, Karlfazer. The 3 D look of the stamp design is very attractive and tempting ! The design is mouth-watering that very difficult to write this post without a similar chocolate in the mouth....What a wonderful stamp ! A collective item for all stamp lovers and those who love chocolate ...

About 100 Years of Fazer Blue

Posti celebrates Fazer Blue, Finland's favorite chocolate, which first went on sale in 1922, with its own stamp. Karl Fazer's golden signature and the blue wrapper have been the emblem and quality guarantee of milk chocolate from the very beginning. They are also featured on the delicious stamp designed by Paula Salvian-der, which focuses on the essential: a newly opened Fazer Blue chocolate bar.

The blue color of Fazer was registered as its own trademark in 2001, which serves as a symbol for the chocolate even without having to write the name. For Finns, Fazer Blue represents the Blue Heart of the whole company. Indeed, Fazer has been one of the most appreciated Finnish brands for years.

FROM AUSTRIA:

Austria Post have a long track record of issuing unusual stamps, and their response to the global pandemic has been typically innovative. First we had the coronavirus stamp made of toilet paper, as panic buying gripped many parts of the world; next was the 'mini FFP2 mask' stamp which was an embroidered, stamp-sized mask; and now we have the sticking plaster design, intended to encourage vaccinations. A statement on the Österreichische Post website explained:

'The idea for this original miniature sheet resulted from the imponderables of the coronavirus pandemic and was therefore issued on short notice and without an announcement in the issue programme.



AND SEATING A NEW LOW:

THE UNITED NATIONS

Back on November 19th 2021 the United Nations Celebrated World Toilet Day issuing 3 stamps



The stamps depict three of the most important ways toilets, water, and hygiene add value to our lives.

1. 58c stamp - Safely managed toilets and water services dispose of waste, helping prevent food/crops contamination and ensuring sustainable use of water in agriculture.
2. CHF 1,00 stamp - Good hygiene practices are possible only with reliable and affordable water and sanitation services, which help protect people from preventable diseases like COVID-19 and cholera.
3. €1,00 stamp - Toilets at home, school, and workplaces are particularly important for women and girls especially during pregnancy and menstruation, which helps them continue to contribute to society.

.....AND THAT FLUSHES OUT THIS ISSUE