

THE CARD – Vol. 33, No. 1, Issue 370, January 2022

A Publication of the Lancaster County Postcard Club, Lancaster, PA

Enjoying postcards through education and entertainment.

Next Meeting: January 17, 2022, Farm & Home Center, Buy, Sell & Trade from 5:00. Meeting - 7 PM

Like us on Facebook – www.facebook.com/LCPClub.

<http://www.lcpc-stamps.org/newsletter-archive/the-card/>

DECEMBER HOLIDAY PARTY

Twenty-two members and guests gathered at the Park City Diner on December 20th for the holiday party. We enjoyed a tasty meal and a lively conversation with good friends.

PRESIDENT'S MESSAGE

Happy New Year!

Looking back at newsletters from our past meetings I realized that I last served as President in 2019. This year I am starting my third time as President of our club. I am honored to do this but I want each of you to think about what you can do to help. For instance – help at the club table (the same people have been there for years), help with the PC competition (aren't you getting tired of the Susan & Barabra show), volunteer to give a program (October & November are open) or write an article for the newsletter.

I want to thank Jean Schopf for her willingness to serve as Vice President this year. In the fall we will be looking for people to serve in 2023. Think about it. As you can see below, many of the people listed have been in those positions for years.

I wish each of you all the best for 2022 and hope for brighter days ahead.

Susan Glass

OFFICERS & BOARD for 2022

President – Susan Glass

Vice President – Jean Schopf

Secretary – Betty Beck

Treasurer – Barabra Mowrer

Past President – Mark Arbogast

Board of Directors – Jere Greider, Robert Kramer, Annetta Buettner, Gisela Withers

Membership Chairman – Richard Pendergrast

Newsletter Editor – Susan Glass



**INCLEMENT WEATHER

If the Lancaster City Schools are closed on the day of our LCPC meeting – **the club will not meet.** For those of you, who use FACEBOOK; go to LCPClub page for a cancelation posting. If the weather prediction is questionable please contact President Susan Glass 717-872-0810.

JANUARY MEETING

Member participation night – please bring one of your favorite cards to the meeting to share. Be prepared to tell what makes it special to you.

2022 PROGRAMS

February – Betty Beck, “The Building of McCaskey High School”

March – Members Market

April – Mark Arbogast, “The Trolley to Strasburg and Early Strasburg Views”

May – Dede Schaeffer

June - Bud Heim

July - Picnic

August - Expo

September – Leighton Stover

October –

November –

December – Holiday Party



2022 POSTCARD COMPETITION SUBJECTS

January – The number 22

February – Education (teaching, school rooms – no buildings)

March - Advertising

April - Children

May - Flowers

June – Parade Bands

July - Picnics

August - Expo

September – State Fairs

October – Farm Animals

November – Foreign



FUTURE SHOWS

January 29 – 34th Annual Paper Americana Show, Singler Fire Company, 300 Newark Ave. Elkton, MD, Saturday 10-4, Admission \$3.00

March 5 - Spring Chesapeake Postcard Fair & Postcard Auction, Havre de Grace Community Center, 1 Lagaret Lane, Havre de Grace, MD Sat. 9-4, Admission \$3.00

March 25-26 – 45th Annual Postcard Show, Morlatton Post Card Club Inc., Farm & Home Center, Lancaster, PA, Fri. – 10-6, Sat. 10-4, Admission \$2.50

April 30 – May 1 – Allentown Spring Paper Show, Allentown, PA, Sat. 9-5, Sun 9-3, Admission \$10

HAPPY BIRTHDAY, BEN!

(Born January 17, 1706. Died April 17, 1790)

By Jim Ward

A Pennsylvania printer; PA governor 1785-1788; inventor; Army colonel, first ambassador to France; first US Postmaster General and close friend of George Washington.

One of Franklin's few errors was his quote in 1754 that "The motherland is so vast an American Territory that it will require many Ages to settle it fully."

An early contact Franklin made with Washington was Franklin publishing in his "Pennsylvania Gazette" the current notes Washington was making in his Journals considering the western settlers and pro-French natives. They apparently met often to discuss the frontier. By 1756, both Franklin and Washington had been elected colonels of their own frontier forces.

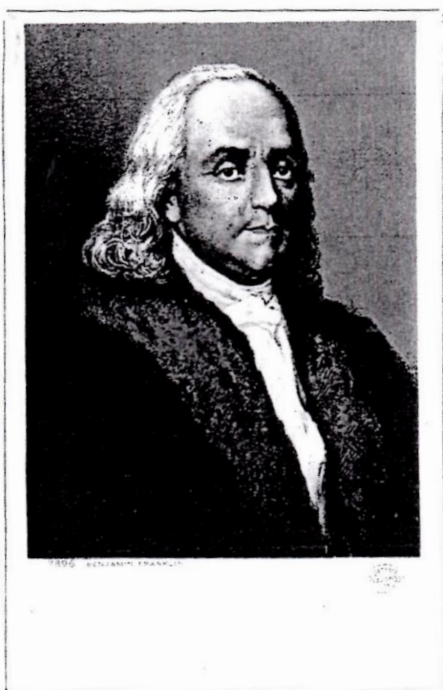
In discussing strategy and tactics, Franklin shortly saw his colleague as the better commander. There was continuous mail between the two men for many years.

Later, while in Paris, Franklin wrote Washington that "You would, on this side by the sea, enjoy the great reputation you have acquired. European generals "Applause your conduct" and join in giving you the character of the greatest Captains of the Ages." (Continued next issue).

Franklin developed a set of twelve Virtues. A Quaker friend thought of Ben as a "generally proud" man, and so Franklin added the thirteenth virtue.

These names of virtues, with their precepts, were:

1. TEMPERANCE. Eat not to dullness; drink not to elevation.
2. SILENCE. Speak not but what may benefit others or yourself; avoid trifling conversation.
3. ORDER. Let all your things have their places; let each part of your business have its time.
4. RESOLUTION. Resolve to perform what you ought; perform without fail what you resolve.
5. FRUGALITY. Make no expense but to do good to others or yourself; i.e., waste nothing.
6. INDUSTRY. Lose no time; be always employ'd in something useful; cut off all unnecessary actions.
7. SINCERITY. Use no hurtful deceit; think innocently and justly, and, if you speak, speak accordingly.
8. JUSTICE. Wrong none by doing injuries, or omitting the benefits that are your duty.
9. MODERATION. Avoid extreams; forbear resenting injuries so much as you think they deserve.
10. CLEANLINESS. Tolerate no uncleanness in body, cloaths, or habitation.
11. TRANQUILLITY. Be not disturbed at trifles, or at accidents common or unavoidable.
12. CHASTITY. Rarely use venery but for health or offspring, never to dulness, weakness, or the injury of your own or another's peace or reputation.
13. HUMILITY. Imitate Jesus and Socrates.



In the codicil to his will, dated 1789, Franklin established a 200-year plan for c.\$4,400 to the city of Boston for loans to young workman. It was later used to establish a technical school; opened in 1908 as the Boston Franklin Institute of Technology. A series of murals around camps are the works of Charles Elliot Mills and featured on 4x6" Lusterchrome postcards, five of which we show here. (With each postcard is a quote by Franklin.)

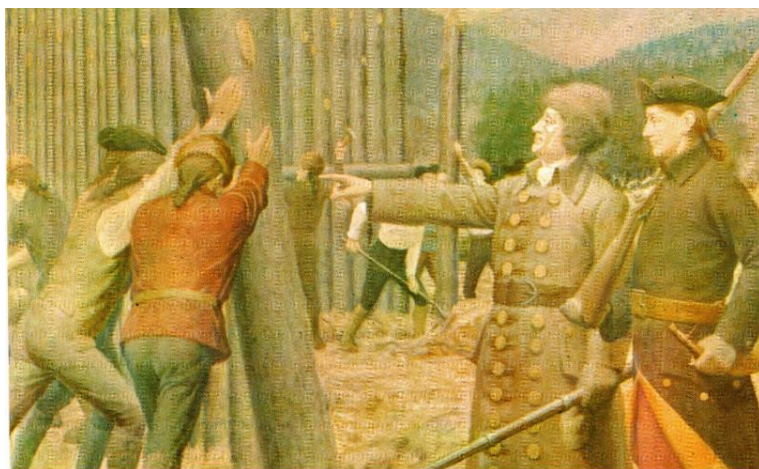


Selling ballads in the streets of Boston

"The noblest question in the world is what good I may do in it."

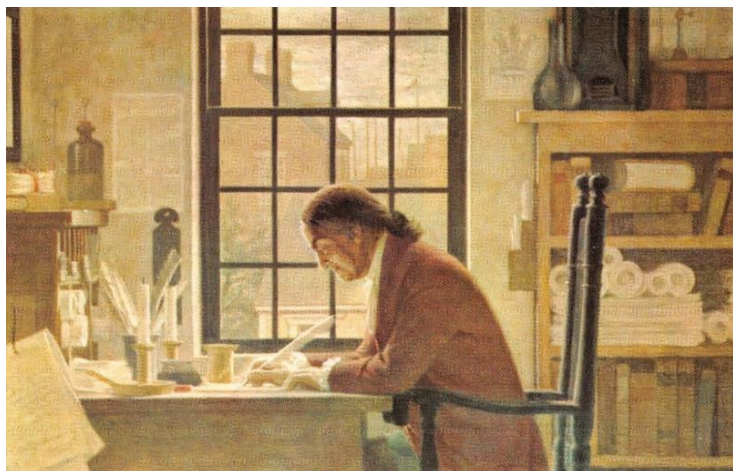
The Army Engineer

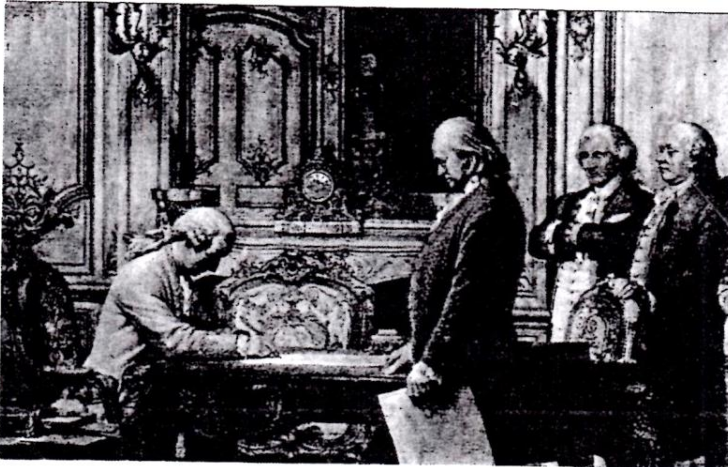
"It has been a pleasure to me to see good workmen handle their tools."



The Editor

"They that won't be counseled cannot be helped."





The Diplomat signing the Treaty of Alliance with France

“one whom all Europe held in high estimation – Lord Chatham.”

At the Bar of the British House of Commons

“Those who would give up Essential Liberty for a little temporary Safety, deserves neither Liberty nor Safety.”



FUN FACTS ABOUT BEN

All Hail the Bucket Brigade

In keeping with his desire to help others, Franklin created the first volunteer fire department in America. This venture began when he wrote a series of articles in the Pennsylvania Gazette discussing his belief that there was a need for better fire prevention methods. The Union Fire Company was formed soon after in December of 1736 and became known as Benjamin Franklin’s Bucket Brigade.

Death Defying

Including his risky experiment with the kite, Franklin did several others that were just as, if not more, dangerous. So much so that he nearly died twice. Once when he tried to use electric shock to cure a man of paralysis and another time when he tried to kill a turkey with electricity.

Musically Inclined

While it is still unclear who actually invented the instrument, Ben Franklin is known for perfecting the glass harmonica. His design was so innovative and unique that Beethoven, Strauss and Mozart composed pieces for it.

A Linguist

In addition to his passion for science and literature, Franklin spoke five languages including English, French, Latin, Italian and Spanish. He was self-taught and was always looking for ways to self-improve

Check Mate

Among his many other talents, Benjamin Franklin was a skilled chess player. He was inducted into the United States Chess Hall of Fame in 1999. He wrote a well-known essay, “The Morals of Chess” that detailed the rules of conduct for playing the game and was responsible for making chess a popular sport in America.

Please Sign Here

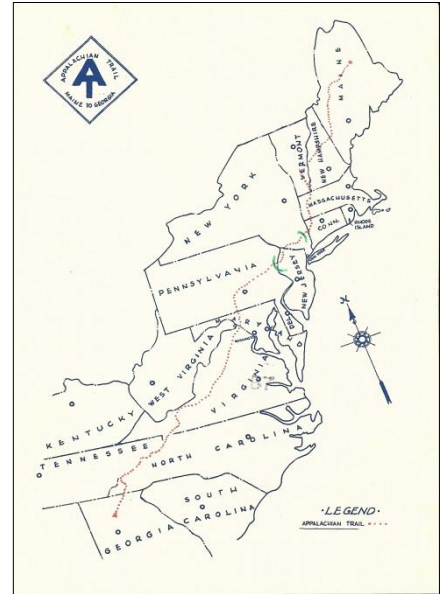
Franklin is the only founding father that signed all four key documents that led to the formation of the United States. These include the Declaration of Independence, the Treaty of Alliance with France, the peace treaty with Great Britain in 1783 and the United States Constitution.

THE APPALACHIAN TRAIL CELEBRATES 100 YEARS

By Betty Beck

In 1900, Benton McKay stood on a Vermont mountaintop and wondered if he could construct a trail that extended to the southern mountains. Opened in 1921, the Appalachian National Scenic Trail (AT), is a 2,193 mile-long public footpath. McKay's dream was to create a sanctuary where humans could find a way out from the stressors and challenges of urban life and connect with nature on an individual basis.

The AT transverses 14 states, as you can see on the postcard. This card was sent by me in 1991 to my aunt Pat, with the message: *Dear Aunt Pat, Well, it's hot and rocky. (Daughter) Pam and I are resting in the mountains for two days. Then on to Bear Mountain. We "danced" with a rattlesnake. Love, Bebe*

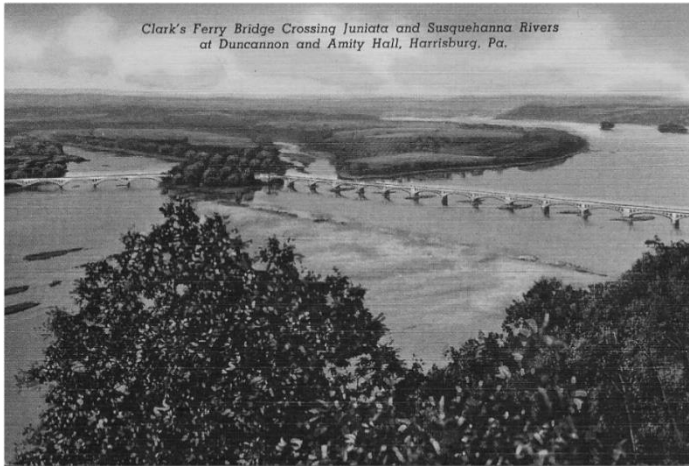


In Pennsylvania, the 229.3 MILES of the AT offers the remnants of a rich history. The trail begins at the Maryland/PA border at PenMar. PenMar was the site selected in 1871 by Colonel J. M. Hood of the Western Maryland Railroad as the location for the development of an amusement park opened to the public on August 31, 1877. By the turn of the century, the Pen Mar area had become one of the most popular resort destinations in the eastern United States. Weekday crowds in the summer were often 4,000 to 5,000. The single day park attendance reached close to 20,000 visitors.



Traveling farther north on the trail, the AT enters Michaux State Park. Did you know that Pennsylvania was home to a prisoner of war camp during World War II? The trail passes by the entrance, shown in the postcard as Camp Michaux. But before it was this church camp, it was a secret POW camp from 1943 until 1945. It was so secretive that even most locals at the time didn't know exactly what was happening in the woods of south-central Pennsylvania. During its 30 months of service, thousands of German, Italian, and Japanese officers were brought here and interrogated by American military intelligence.





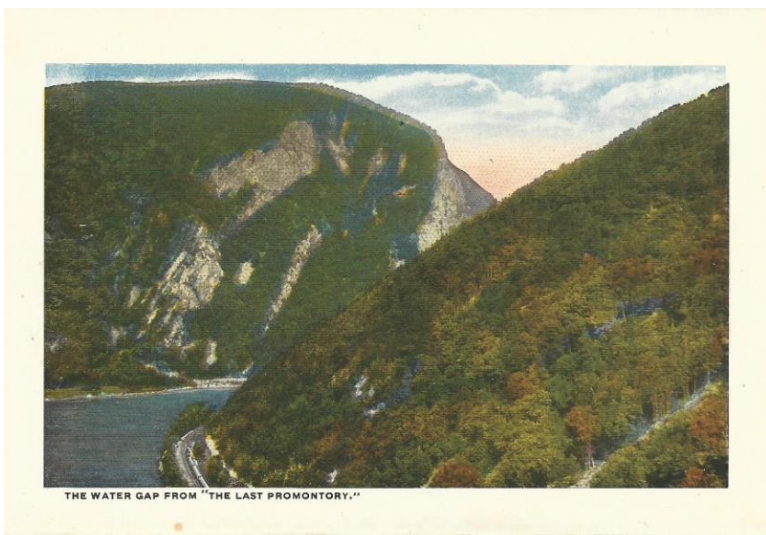
In the middle of the PA trail, crossing the Susquehanna is no problem as the new bridge at Duncannon has a “sidecar trail” built along the right side of the bridge, leading to a daunting climb up Peters Mountain. The first [Clarks Ferry Bridge](#) – which opened in 1828-29 was a covered bridge made from more than 1 million board feet of white pine lumber. It was 2,088 feet long, divided into 10 spans, nine of which were 212 feet long and one 180 feet long. In 1888, it had the reputation of being the longest covered wooden bridge in the world

The bridge pictured in the postcard opened in 1925. This one was replaced in 1986 to accommodate the increased amount of traffic.

Farther north, you can look across from the Pinnacle Overlook to Hawk Mountain, a popular place to see migrating raptors and monarch butterflies.



From there, you can also see the end of the AT in Pennsylvania as the Delaware Water Gap dips to the Delaware River as the AT crosses into New Jersey.



THE WATER GAP FROM "THE LAST PROMONTORY."