

U.S. International Stamp Shows

Part-II: 1956-1976



American Philatelic Society

Summer Session-2020 (Virtual)

Tuesday, 02nd June

Paul Petersen

Philatelic Society of Lancaster County

Revised For PSLC, 8 December '21

How the U.S. IPEXs Started

2

- Int' l Shows in London, Vienna, & Others
- U.S. Philately on the rise; Gaining ground among foreign competition and winning awards
- @ the 1911 APS Convention...
- CCNY and NY State Stamp Society form the Association of Stamp Exhibitors (ASE)
 - Established 20th February 1912; 800 members by 1913
 - A combo of collectors & dealers to take lead
 - JC Morgenthau-President
 - JW Scott, Treasurer

Evolution of a Name: The IPEx³

- 1913: International Philatelic Exhibition
- 1926: International Philatelic Exhibition
- 1936: Third Int' l Phil Exhibition (TIPEX)
- 1947*: Centenary Int' l Phil Exhibition (CIPEX)
- 1956: Fifth Int' l Phil Exhibition (FIPEX)
- 1966: Sixth Int' l Phil Exhibition (SIPEX)
- 1976: Interphil76
- 1986: AMERIPEX '86
- 1997*: PACIFIC '97
- 2006: Washington 2006 World Phil Exhibition
- 2016: NY 2016 World Stamp Show
- 2026: Boston World Stamp Expo**

* Offered on an off year to coincide with the 100th and 150th anniversary of the first U.S. postage stamp in 1847

** Revised show name as of 4/17

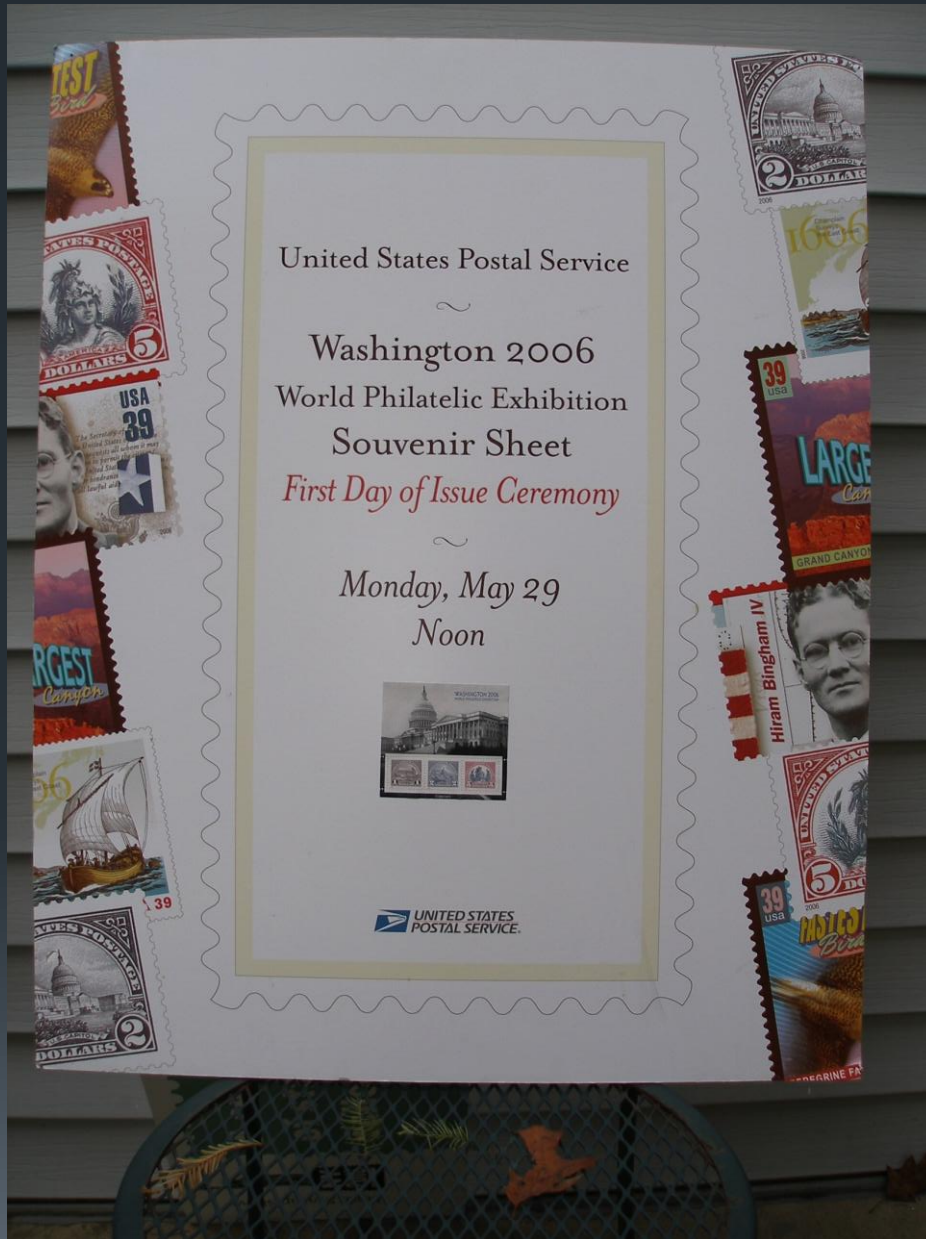
Most every event leaves a trail of ephemera behind. It is the stuff that is often cast aside.

Once upon a time, a person of vision realized that perhaps a bit of money can be made from this material, and she called them souvenirs. Sometimes it just comes down to money!

Nevertheless, whether the material is incidentally created or made to sell, it is fun to collect. Most of it is relatively inexpensive, much of this being free at the time of the event. Being inexpensive does not mean that it is easy to come by. A few items can be pricy, but it is the hunt that counts.

So what kind of stuff are we talking about? And where does it come from: Int'l and other stamp shows, Political conventions, World's Fairs, Trade Shows, Sporting events & Academic and professional conventions among others. It's everywhere!

Many items in this presentation are from the collection of and the NY WSS '16 Court of Honor exhibit of Steven J. Rod.



Examples of IPEX Ephemera

Some Examples

- Postage Stamps & Station'y
- Cinderellas, Labels, Seals
- Philatelic Covers
- Business Covers & letters
- Programs, Journals
- Souvenir Sheets
- Posters, Handbills
- Show Catalogues

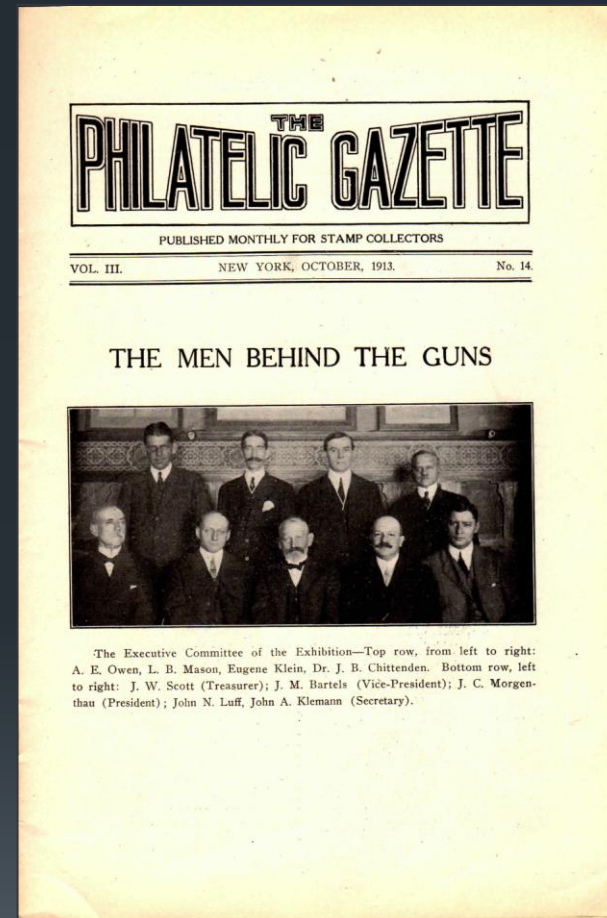
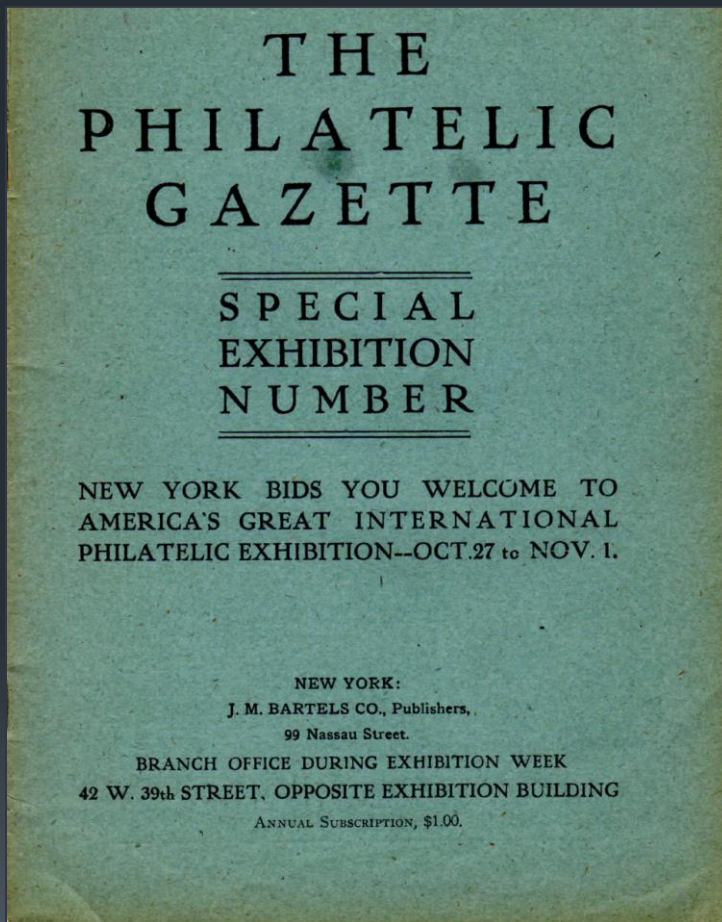
...even more examples

- Publicity, Flyers, Ribbons
- Banquet Menus, Medals
- Tickets
- Passes
- FDC Events
- Exhibit awards, Bourse Lists
- Newspapers, Journals
- Signs, Floor Plans

Further, IPEX-goers may save their airlines tickets, hotel brochures, autographs, restaurant menus, theatre or sporting event tickets, home-made philatelic items, photographs, local picture postcards, newspapers, & city maps, and so much more.

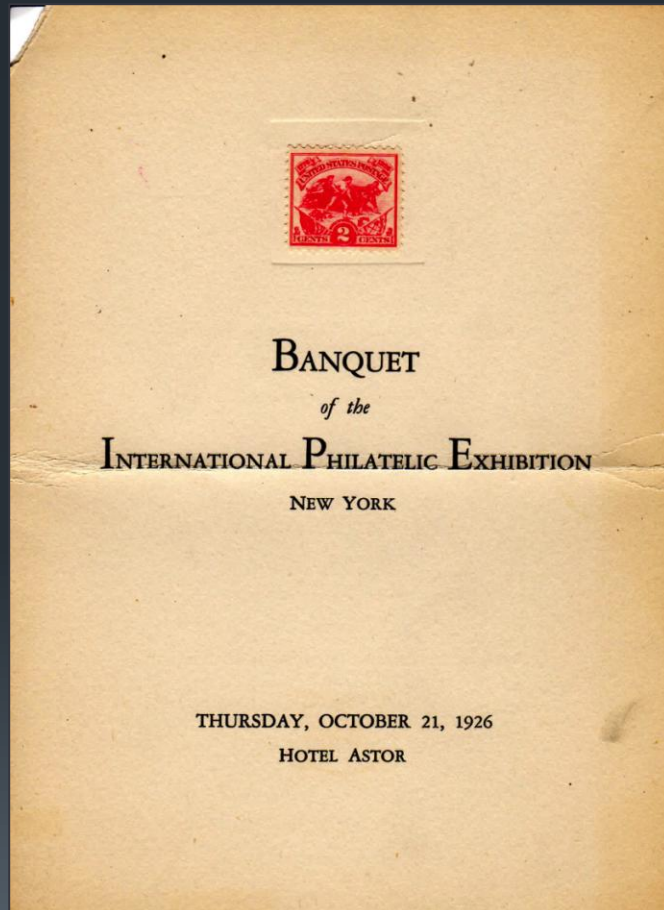
- As tonight's focus is on the 1956, 1966, and 1976 Internationals, the next slides are just a quick spree through the eleven shows simply to illustrate the scope of material available present items from the other shows.

1913-New York City



(L) Pre-Show Publicity in the Philatelic Literature; (R) Planning Committee.
There were neither dealers nor the USPOD. 331 exhibits

1926-New York City

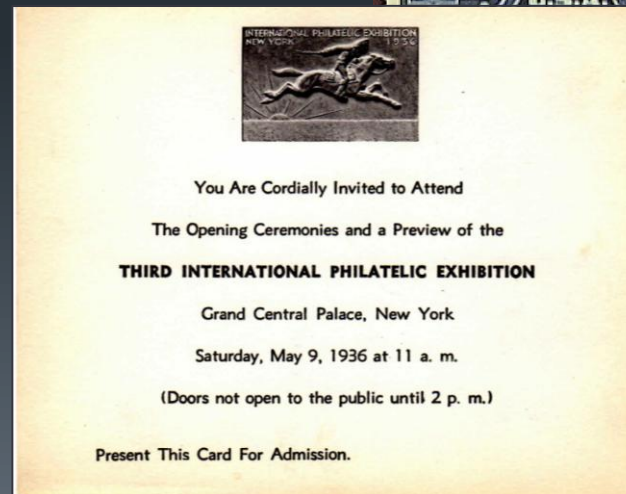


(L) 2nd IPEX Banquet Menu; (R) No. 630 White Plains Sheet

1936-New York City



↑Signature of 3rd Asst. PM, C.B. Eilenburger; ↑PPC of Show Opening Distributed at Show



↑CIPEX Seal;

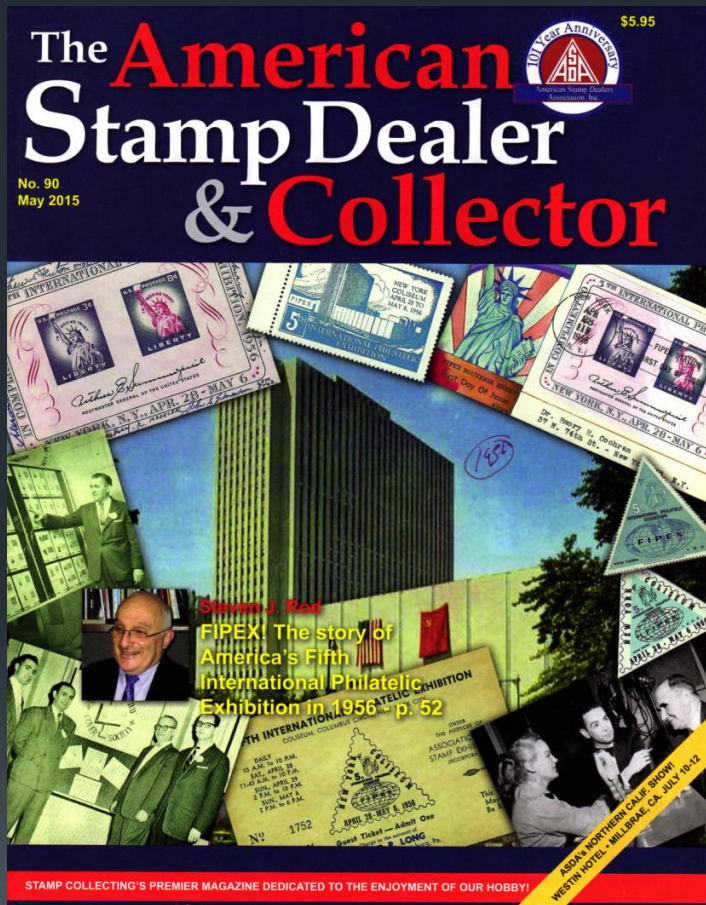
←Opening Ceremony Invitation

1947-New York City

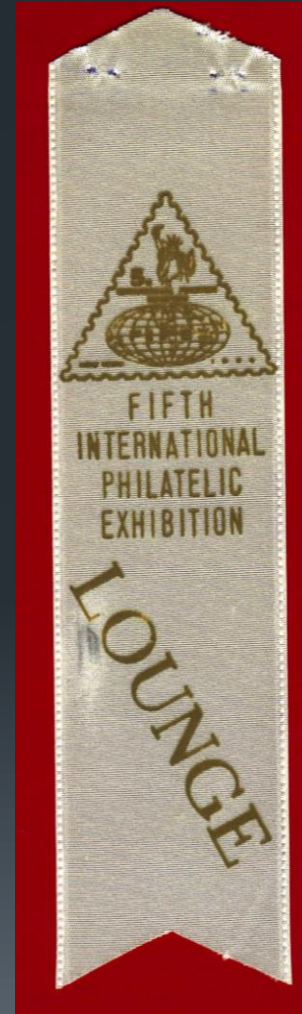


(L) CIPEX Award Plate; (R) FDCs Issued at the Show

1956-New York City



(L) 2015 ASD&C featuring FIPEX; (R) Ribbon



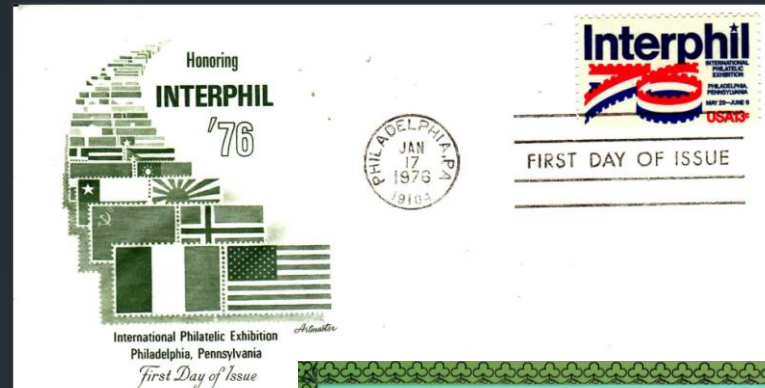
Above-Show Labels

1966-Washington, DC



(L) Image of SIPEX Exhibition Jury; (R) Stamps and Souvenir Sheet

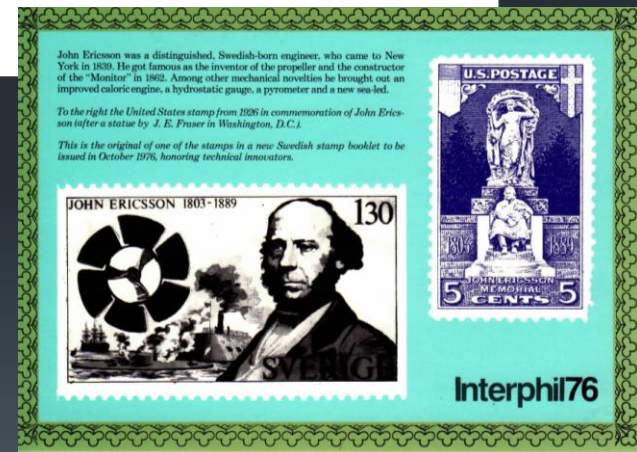
1976-Philadelphia



Seventh
USA International
Philatelic
Philadelphia USA

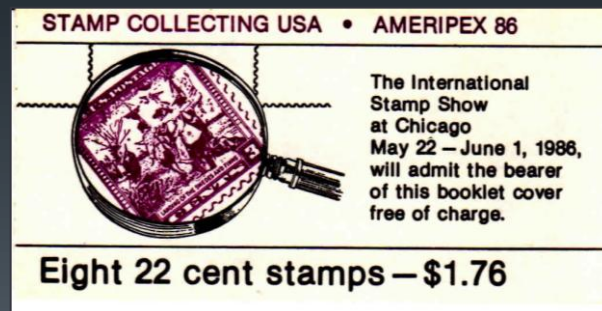
Interphil 76

International
Philatelic Passport



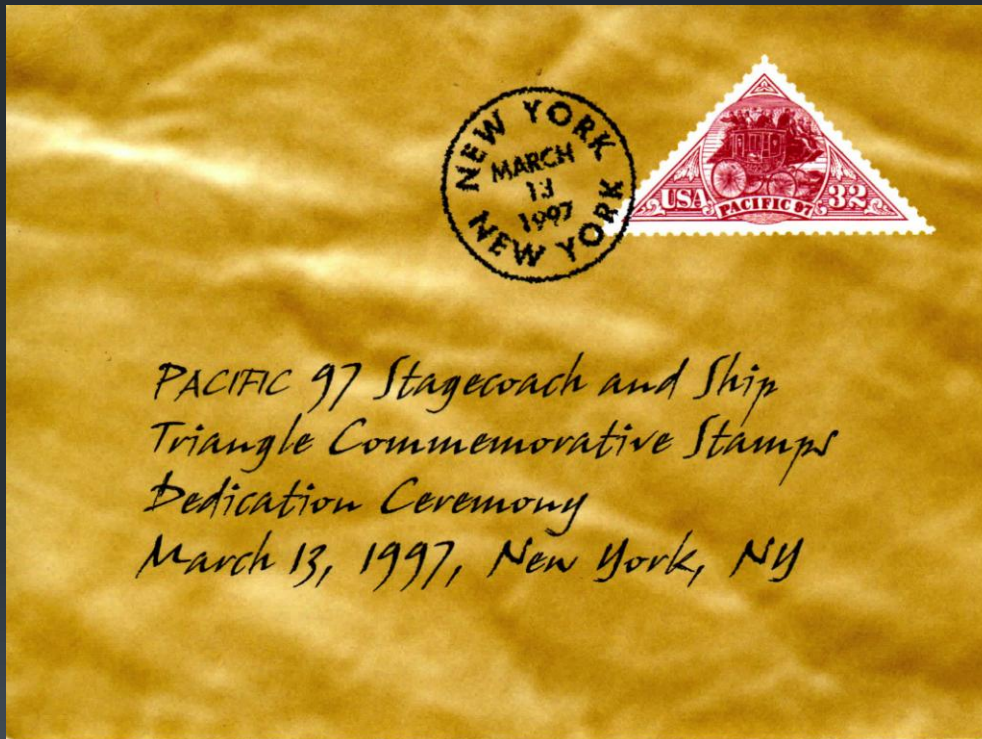
(L) NY Times, 2 May '76 and Passport; (R) FDC & Sweden Souvenir

1986-Chicago (Rosemont)





(L-Top) Tickets, (L-Bottom) USPS Booklet; (R) Stamps from 7 -IPEXs


1997-San Francisco



the first triangular stamps issued by the United States Postal Service, were designed by Richard Sheaff of Norwood, MA.

The two designs feature a U.S. Mail stagecoach and a clipper ship, both from the 1800s. The Clipper Ship, Richard S. Ely, engraving is based on a small advertising card drawing prepared to entice travelers to California by ship. The coach is believed to be based on a drawing by American artist Harrison Eastman who, prior to becoming an artist, was a post office clerk in San Francisco. The two 32-cent stamps appear on a unique pane format of 16, with the words, "PACIFIC 97 International Stamp Exhibition, San Francisco, California, May 29-June 8, 1997," in the selvage.



FIRST DAY OF ISSUE

<p>Presiding Sylvester Black District Manager/Postmaster Customer Service and Sales New York, New York U.S. Postal Service</p> <p>National Anthem Mary Pryor</p> <p>Welcome Phil Bannister President American Stamp Dealers Association</p> <p>Dedication of Stamps Michael J. Riley Chief Financial Officer & Senior Vice President U.S. Postal Service</p> <p>Remarks Randy Neil President American Philatelic Society</p>	<p>Presentation James H. Burns Director National Postal Museum Smithsonian Institution</p> <p>Remarks Gene Tinsley President Pacific 97</p> <p>Special Presentations Michael J. Riley</p> <p>Honored Guests Allen Kane Chief Marketing Officer & Senior Vice President U.S. Postal Service</p> <p>Richard Sheaff Designer of Stamps</p>	<p>Honored Guests Azeesaly S. Jaffer Manager Stamp Services U.S. Postal Service</p> <p>Stephen Schumann Vice President Pacific 97</p> <p>Bob deViolini Secretary Pacific 97</p> <p>Bob Thompson Exhibition Manager Pacific 97</p> <p>Mary Ann Owens Member Citizens' Stamp Advisory Committee</p>
---	---	--

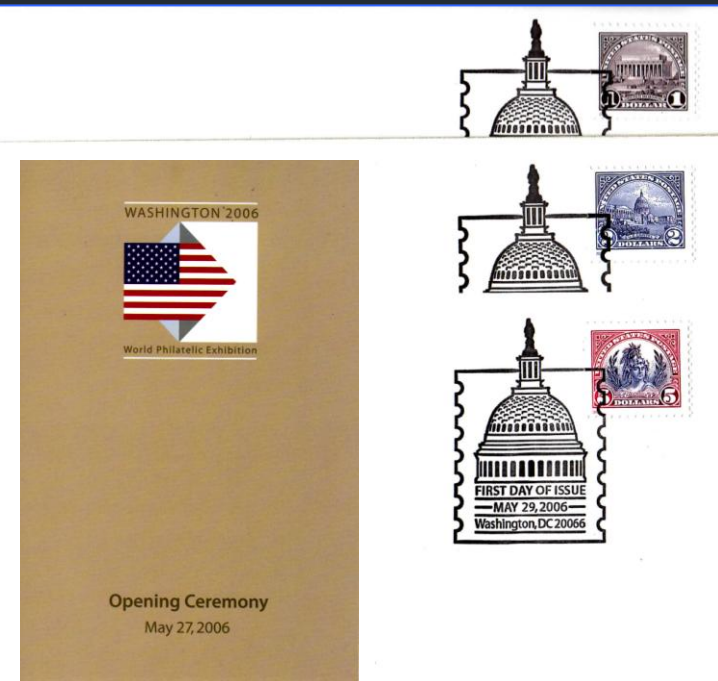
Pacific 97, under the patronage of the Federation Internationale de Philatelie, will commemorate the 150th anniversary of the issuance of

featuring each of those first two stamps and two different Golden Gate Bridge postal cards; daily theme pictorial cancellations; and educational

Postal Museum. An international bourse will feature over 300 dealers, including postal administrations from around the world; and an exceptional Court

First Day Ceremony Program: (L) Closed; (R) Exploded

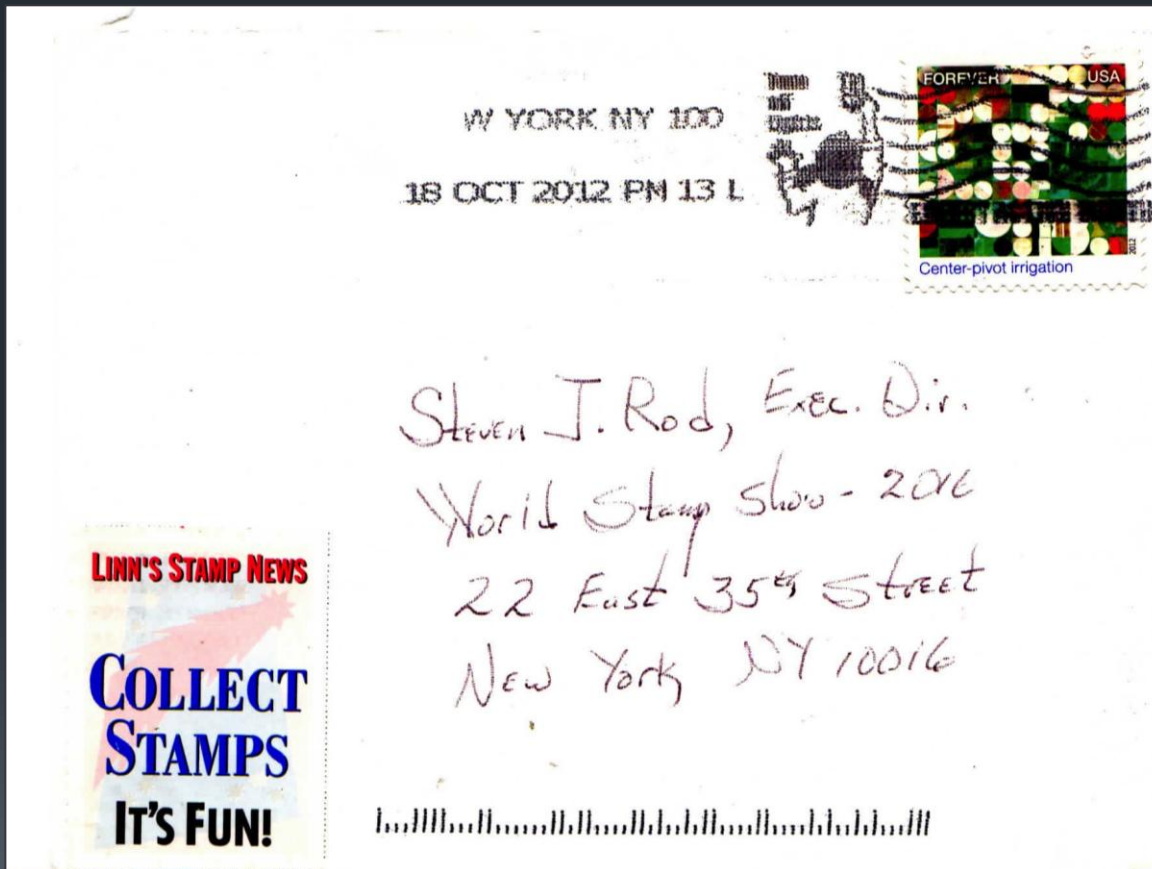
2006-Washington, DC



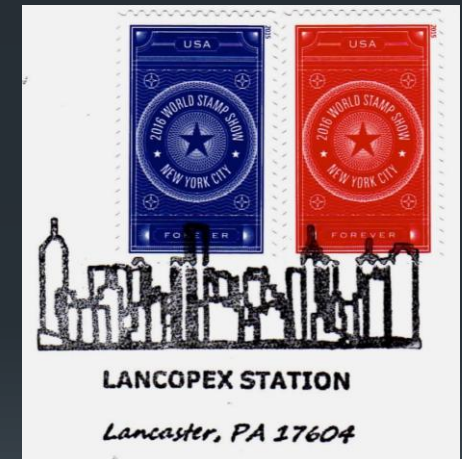
first day of issue ceremony

(L) Germany Cover at Wash'n 2006; (R) 1st Day of Issue for 3 Ceremony Covers

2016-New York City



Thank you
Steven J.-



Show Stamps and
Lancopex Cancel
(Cropped)

(Above) A 2012 commercial letter during
the planning of the NY World Stamp Show

And Let's not Forget the Pretenders: 1989-Washington, DC¹⁹ and 1992-Chicago

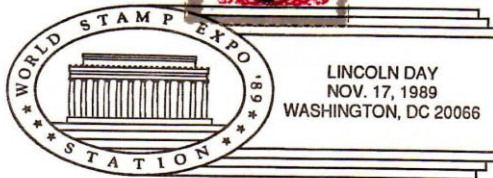
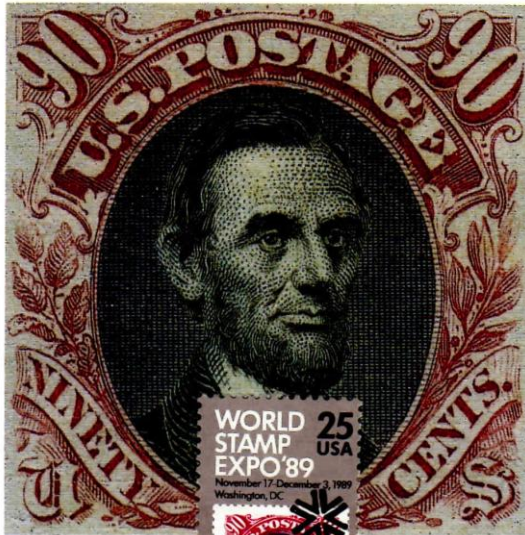
What are the pretenders...Think of them as the Apocrypha, the disputed books of the bible; the step-children of Int'l shows; and/or "wannabees." These are legitimate shows that just missed a few ingredients or Permission slips (i.e. the right endorsements). These were multi-day Int'l shows with U.S. (and other country's) postage stamps, Cinderellas, first day covers (with ceremonies), foreign country participation, exhibits, city tours, banquets, among others. More to come

1989-Wsh'ton World Stamp Expo

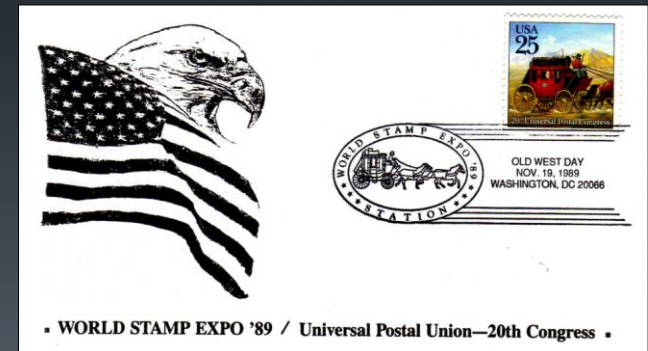
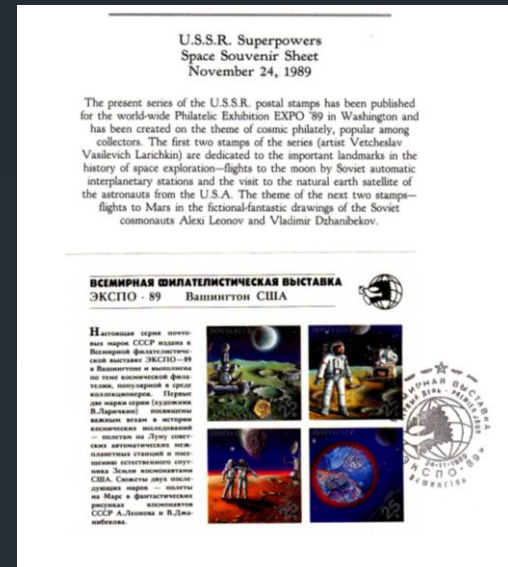
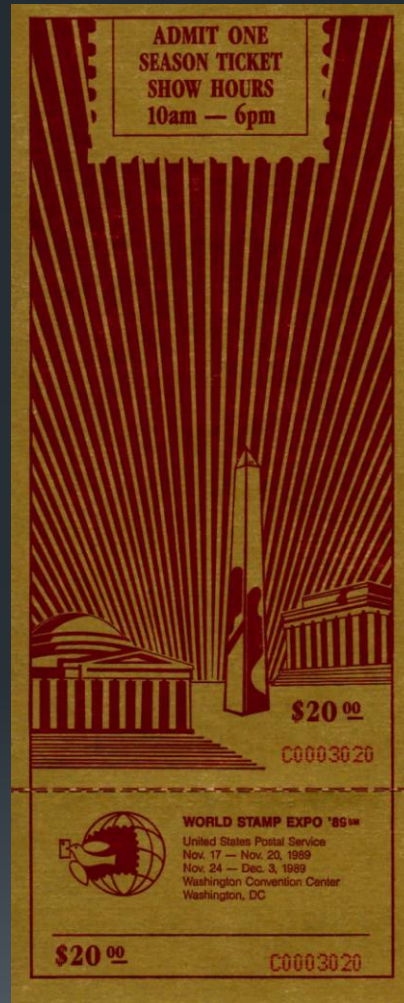


WORLD STAMP EXPO '89

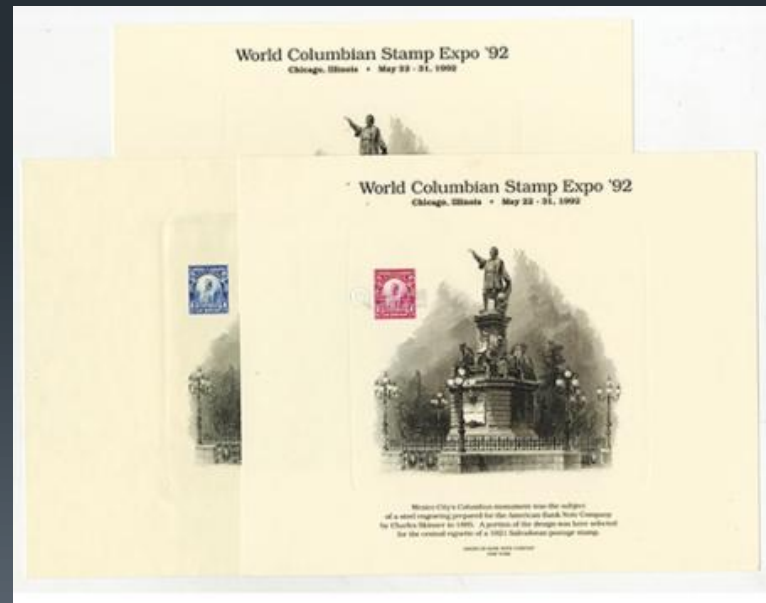
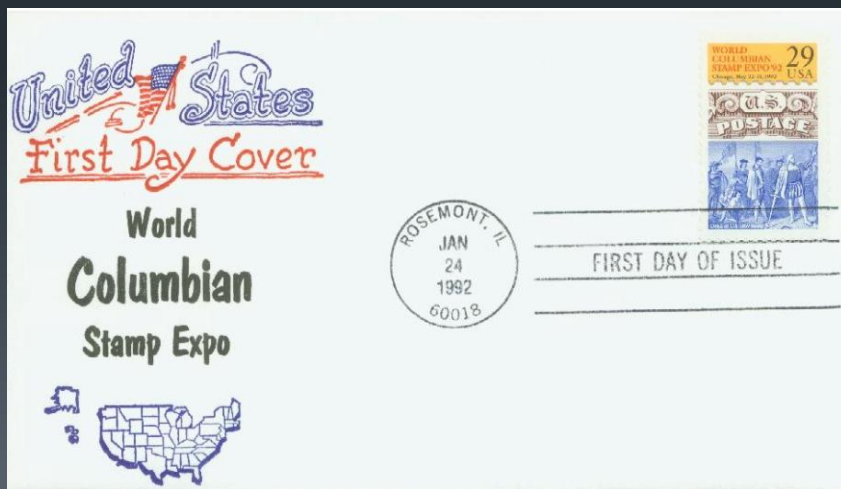
Nov. 17 - Dec. 3, 1989 Washington, DC



LINCOLN DAY
NOV. 17, 1989
WASHINGTON, DC 20066



1992 Chicago World Columbian Expo



International Show Presentations

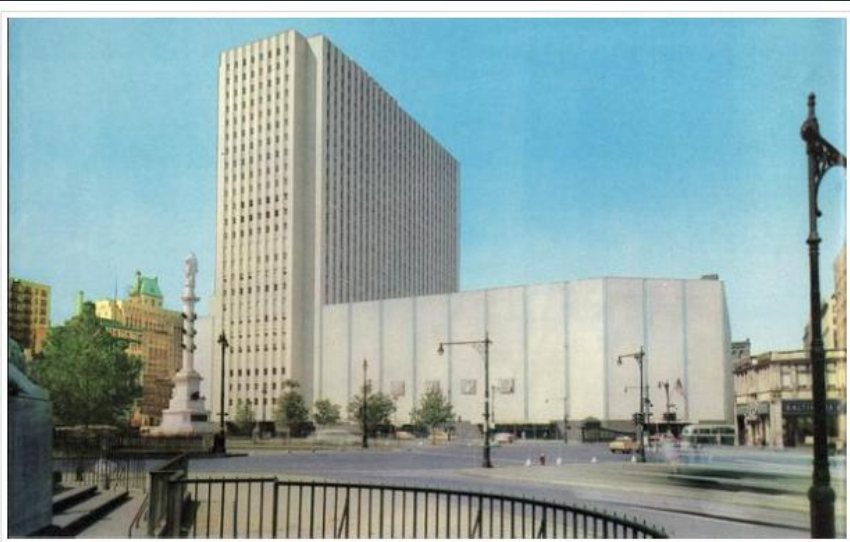
- **Part-I**, 1913, 1926, 1936, & 1947.
Presented at New York 2016 World Stamp Show (2 June) and following at a PSLC Meeting
- **Part-II**, 1956, 1966, & 1976 at Summer Session, American Philatelic Society, 2 June 2020 (Presented virtually)
- **Part-III**, 1986, 1997, & 2006. To be determined
- **Part-IV**, 2016 and the two other international shows in 1989 and 1992. TBA

1956 FIPEX in New York City

- Dates: 28 April-6 May 1956
 - Construction delay in 5/55
 - Show originally scheduled to start on 3 March 1956.
(Almost two months late)
- Held at New York Coliseum – Opened 28 April 1956
 - Eighth Avenue and 58th to 60th Streets (Columbus Circle)
 - Two city blocks
 - AKA 312 W. 58th Street
 - \$35M-One of the most expensive in the world
- Hours: 10 AM to 10 PM across nine (9) days
- Attendance Estimates: 200-250K
 - (Must question reliability of attendance estimates across all shows)
- Sponsored by Association of Stamp Exhibitors (5th time)
- Great pre-publicity as with previous Internationals

Photo and USPOD Stamp Image of the New York Coliseum

24



The '56 IPEX was selected as one of the three (3) inaugural coliseum events because of its international flair given the presence of foreign governments from all over the world.


The New York Coliseum

25

- Replaced Grand Central Palace of past three shows
- Grand Opening: 28th April
 - Escalator-first time for an IPEX
- Four Floors-for 4 Conventions
- Facility Footprint: 9 Football Fields
 - FIPEX had top two floors
 - 143K Sq. Feet
 - 25% > CIPEX in 1947
 - Shared with NY Auto and Photo Shows
- Cost: \$35M (World record)
- Indoor Parking for 850 cars
- Air conditioned
- Two (2) full city blocks
- Opening delayed from 3rd March



For what it's worth...



WIKIPEDIA
The Free Encyclopedia

[Main page](#)
[Contents](#)
[Featured content](#)
[Current events](#)
[Random article](#)
[Donate to Wikipedia](#)
[Wikipedia store](#)

[Interaction](#)
[Help](#)
[About Wikipedia](#)
[Community portal](#)
[Recent changes](#)
[Contact page](#)

[Tools](#)
[What links here](#)
[Related changes](#)
[Upload file](#)
[Special pages](#)
[Permanent link](#)
[Page information](#)
[Wikidata item](#)
[Cite this page](#)

[Print/export](#)
[Create a book](#)
[Download as PDF](#)
[Printable version](#)

[Languages](#)
[Français](#)

[Edit links](#)

[Article](#)
[Talk](#)

New York Coliseum

From Wikipedia, the free encyclopedia

See also: [Bronx Coliseum](#)

The **New York Coliseum** was a **convention center** that stood on [Columbus Circle](#) in [New York City](#) from 1956 to 2000. It was designed by architects [Leon](#) and [Lionel Levy](#)^[1] in a modified [international style](#), and included both a low building with exhibition space and a 26-story office block.

History

The Coliseum was built from 1954 to 1956 by the [Triborough Bridge and Tunnel Authority](#) under city planner [Robert Moses](#), who, in rescuing a project that had long languished, condemned the area from West 58th to West 60th Streets on the west side of Columbus Circle.^[1] During construction in 1955, an accident occurred in which around 10,000 square feet (930 m²) of exhibition space collapsed, injuring 50 workers and killing one.

The Coliseum, which replaced the [Circle Building](#)^[2] and smaller tenement and retail buildings,^[1] opened on April 28, 1956, with three exhibitions: the [New York International Auto Show](#), the National [Photographic Show](#), and the Fifth International [Philatelic Exhibition](#).^[1] A U.S. [postage stamp](#) commemorates the show and the building. Through 1986, the Coliseum hosted 1,246 events.^[1]

The 323,000-square-foot (30,000 m²) Coliseum contained four exhibition floors, including a 150-foot (46 m)-square, three-story well for exhibiting large items, such as sailboats and airplanes.^[1]

Closing and demolition

As the [Jacob K. Javits Convention Center](#), which effectively supplanted the Coliseum as the major exhibit space in New York City, was under construction, it appeared that the days of the Coliseum were numbered, and the [Metropolitan Transportation Authority](#) (MTA), by now the parent of the [Triborough Bridge and Tunnel Authority](#), placed the property for sale. A deal was struck in 1987 to sell the Coliseum and its office building to [Boston Properties](#) for \$477.5 million, which would have seen the complex demolished by 1988. A plunging real-estate market and opposition to Boston Properties' proposals ultimately led Boston Properties to walk away from the project in 1994.^[3] In the interim, the MTA, seeking to make some use of the site once the future of the Boston Properties site became unclear, reopened the Coliseum on an interim basis in 1992 for smaller events, primarily a thrice-a-year antiques show, until finally closing for good in January 1998.^[4]

In the mid-1990s, another attempt to sell the Coliseum was made, this time, to an investment firm headed by [Israel Englander](#), who proposed to build luxury apartments and a ballroom on the site. However, with the real estate market rebounding, a critical \$50M tax break was withdrawn by then-mayor [Rudolph Giuliani](#) (seeing a tax break for a property that would not draw permanent jobs to the site as unnecessary), at which point Englander's Millennium Partners walked away from the project.^[3] In 1998, a deal was struck to sell the property to a joint venture of [Time Warner](#) and [The Related Companies](#). Although this \$345 million bid was \$45 million less than the high bid for the land offered by [Donald Trump](#), the Time Warner/Related proposal was seen as a lock for approval by city authorities. Following asbestos abatement, demolition of the Coliseum and its attached office building began in the winter of 2000 and was complete by that summer.^[4] The Time-Warner-Related joint project, now called the [Time Warner Center](#), now stands on the site.

References

- ↑ *abcdef* Gray, Christopher (1987-04-26). "The Coliseum; The 'Hybrid Pseudo-Modern' on Columbus Circle"​​. *New York Times*. Retrieved 2009-09-05.
- ↑ *NYC-Architecture.com*: The New York Coliseum​​
- ↑ *bb* Charles Bagri (July 28, 1998). "A DEAL IS STRUCK FOR COLISEUM SITE"​​. *New York Times*. Retrieved February 8, 2016.
- ↑ *bb* David Dunlap (February 20, 2000). "Built, but Not Destined, to Last; A Robert Moses Legacy, Coliseum Is Coming Down"​​. *New York Times*. Retrieved February 8, 2016.


Categories: [Buildings and structures completed in 1956](#) | [Buildings and structures demolished in 2000](#) | [Buildings and structures in Manhattan](#) | [Defunct buildings and structures in Manhattan](#) | [Robert Moses projects](#) | [Metropolitan Transportation Authority](#) | [Convention centers in New York City](#)

[Not logged in](#) | [Talk](#) | [Contributions](#) | [Create account](#) | [Log in](#)


[Read](#) | [Edit](#) | [View history](#)

Search Wikipedia

Coordinates: 40°76′87″35″N 73°98′29″36″W



The Coliseum in April 1956, viewed from a park



Coliseum commemorative stamp

FIPEX stamp used as an illustration of the Coliseum on Wikipedia

For Collectors and Stampless Others

- 3/56 Opening of Broadway's hit show *My Fair Lady*
- Greyline Bus Tours
- Circleline around Manhattan Island
- More than ten (10) other hospitality packages for collectors and families
- NYC Sporting events (3 MLB teams)

U.S.P.O.D. at FIPEX-I

- Used 10K Square feet of space
- 16 main sales windows allowing for lines up to 100 feet!
 - Long lines most of the eight days
- Special USPOD Exhibits (Live and living displays)
 - A Stamp is Born with the BEP
 - Moving the Mail
 - A Paper Making Machine with Hammersmith (A working model)
 - Watrmarking
 - Ethel McCoy's 1901 Pan American Issues with Inverts
- USPOD issued its greatest numbers of items to date (n=4)

Four USPOD Issues (#1)

29



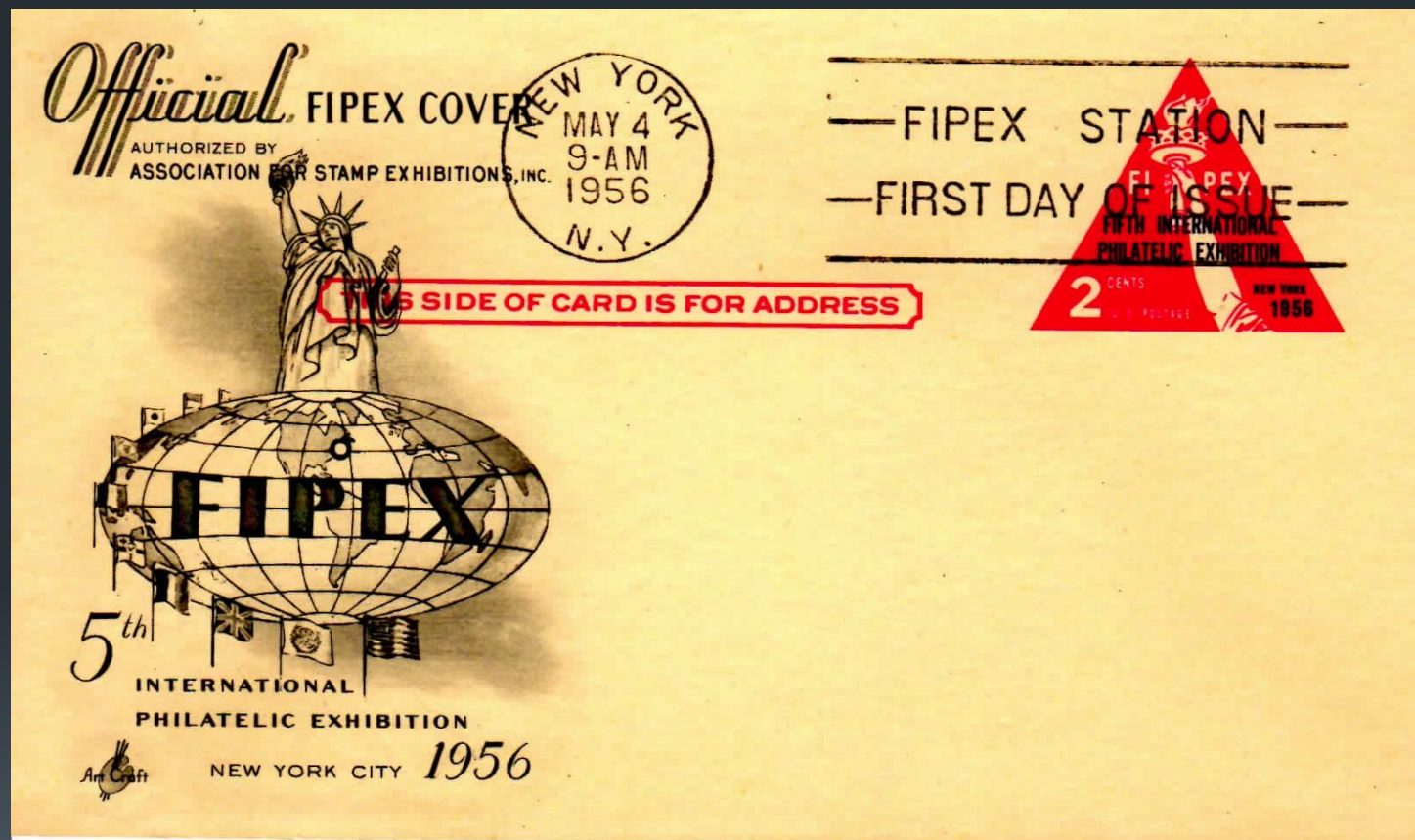
Four USPOD Issues (#2)



Four USPOD Issues (#3)



Four USPOD Issues (#4)



FIPEX Stamps from Liberia

33



FIPEX Exhibits

- Judges: 51 U.S. and Foreign
 - 2nd Opinion: 45 including 28 from U.S.
- Competitive Exhibitors: 482 (41 had Multiple exhibits)
- Competitive Frames: 2321
 - Exhibits limited to five (5) frames and three (3) albums
 - Some exceptions, as 11 exhibits had >20 frames
 - Fewer albums on exhibit than in previous shows
 - (WSS NY'16 was limited to eight frames and no albums)
 - Same classes of exhibits as '36 and '47 but no Class of Honor
 - Stamps from any exhibit class of could win the Grand Trophy
- Grand Prize-Uruguay (First foreign exhibitor to win Grand)
- Best of 19th and 20th Century U.S. Exhibits were won by women

Other Special FIPEX Exhibits



- 1¢ British Guiana of 1856 (\$100K, long lines!)
- Bureau of Engraving and Printing
- National Philatelic Museum of Philadelphia
- De La Rue Printers
- USPOD
- Int'l Salon with special exhibits by 60 foreign Postal Administrations.
- Hall of Color
- Smithsonian Collection: First time out of D.C.
- Full frame of the rarest die proofs, and more
- FDR's Stamp Design Sketches
- Special youth exhibit competition by Jacque Minkus of Gimbels

The Bourse

- Dealers Booths: 121 @ \$650 each
 - (That's \$6127 in 2020 dollars)
- Largest-4 single booths: Washington Press (RIP 2016*)
- Triples: Gimbel's Stamp Store and The H.E. Harris Co.
- Double: Scott Coin & Stamp

FIPEX Show Program

37

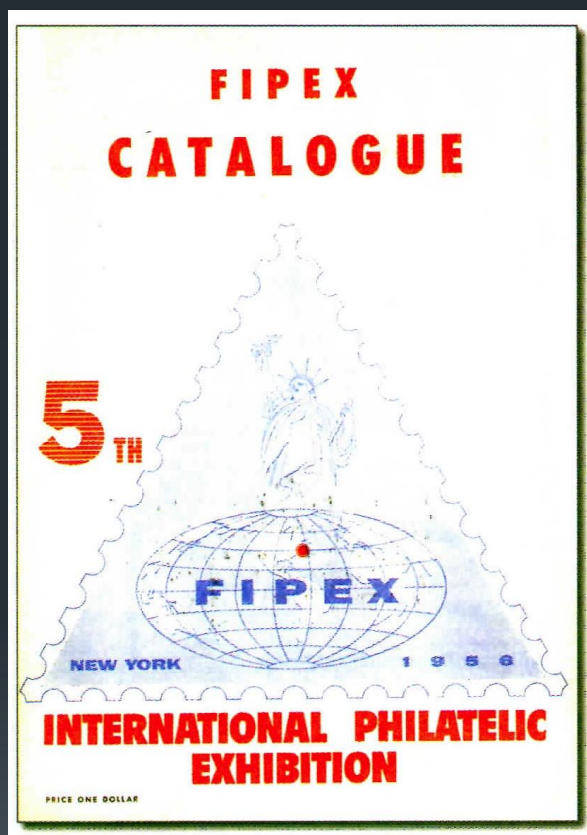


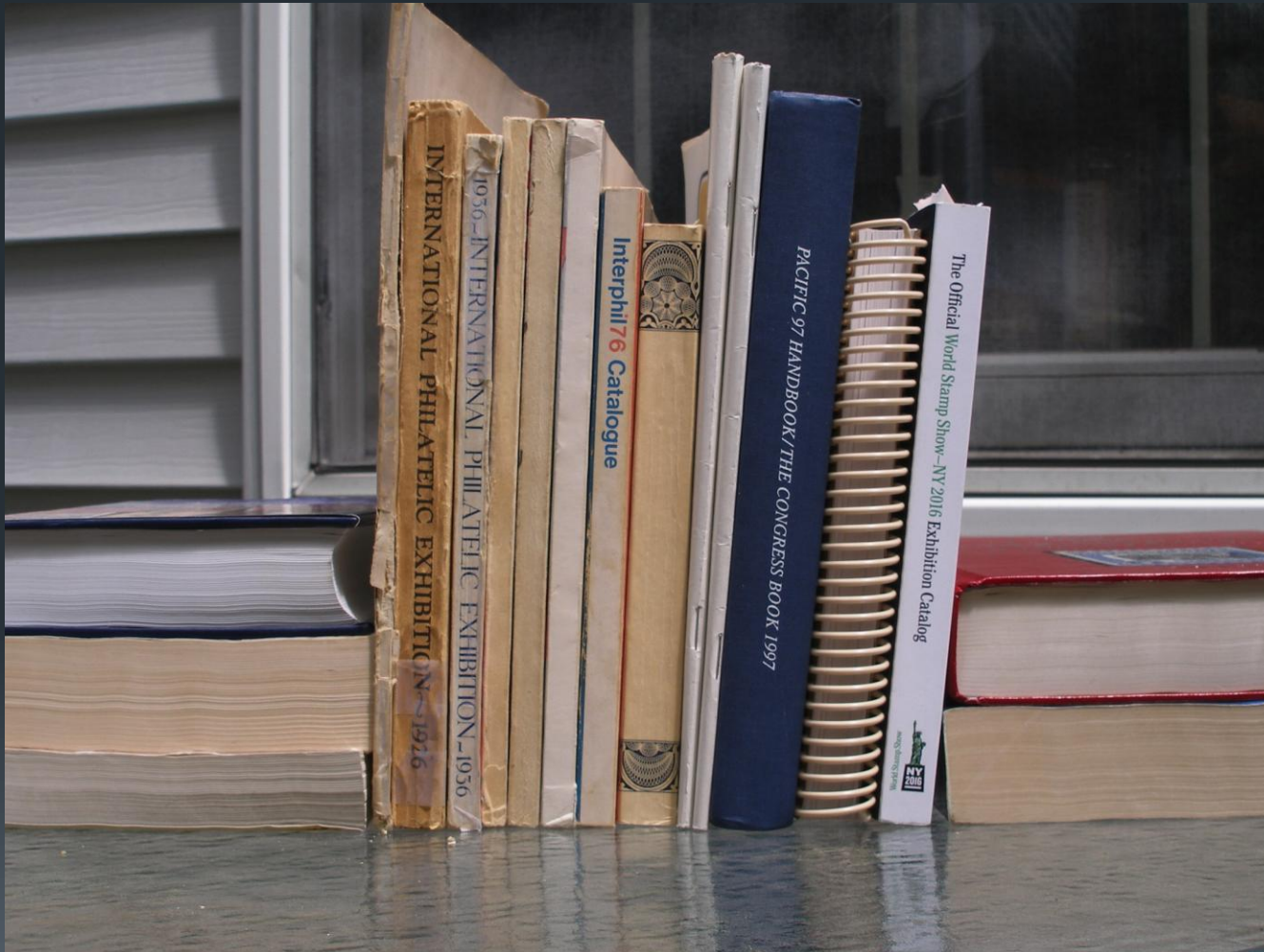
Image from Trenchard

Besides the details of the exhibits, jury, and all, the catalogue contains many advertisements for dealers, FDCs, show leaders, supplies, exhibition rules, ASE membership, auction information, local entertainment, and much more (180 pages @ \$1.00).

Of interest is that the coverage of the bourse was minimal. On the last page was the listing of dealers by number which corresponded to the floor map! It was $\frac{3}{4}$ of the page!

An addendum included a list (n=40) of names and addresses of all the NYC and metropolitan area businesses which displayed postage stamps in their windows to commemorate the FIPEX show. These included banks, bookstores, specialty shops, department stores, and a host of others.

A vertical stack of 11 catalogues



What's wrong with this picture? Next slide please.

A horizontal stack of IPEX cats-II

39

<u>Year</u>	<u>Pages</u>	<u>Continued</u>	
■ 1913	80	■ 1976	268
■ 1926	288	■ 1986 ^b	346+54
■ 1936	248	■ 1997 (<i>Linn's</i>) ^c	120
■ 1947	184	■ 1997 (Congress) ^c	172 ^d
■ 1956	180 ^a	■ 2006	336
■ 1966	194	■ 2016	320

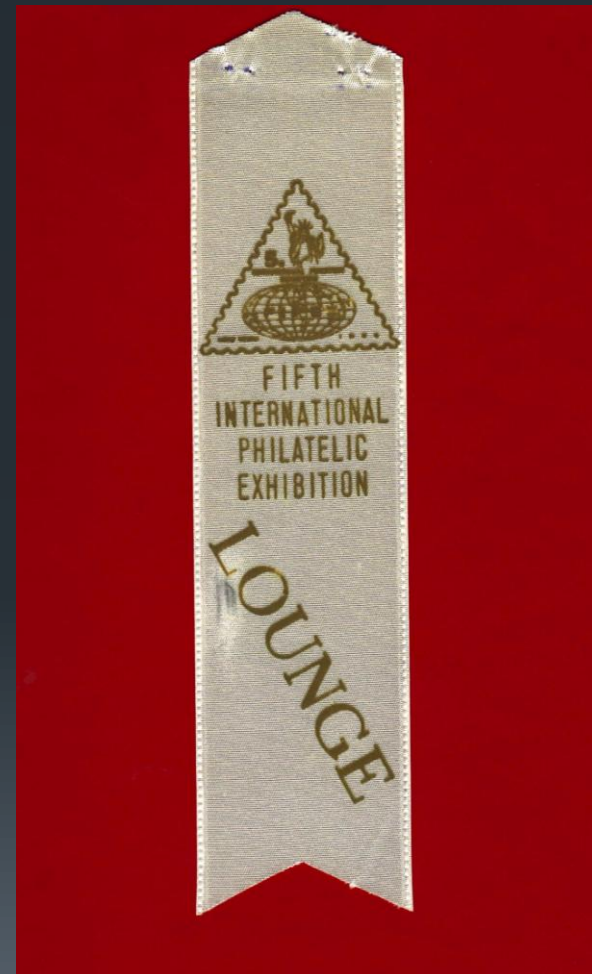
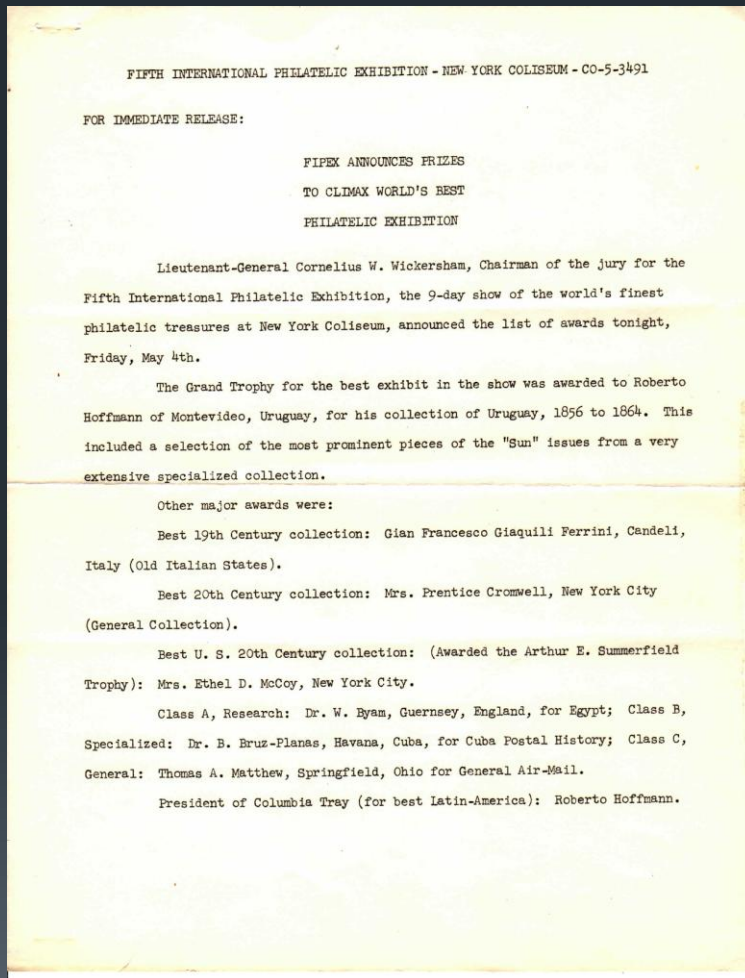
^a-Includes four (4) pages of Addenda/Errata

^b-Last 54 pages are un-numbered advertising

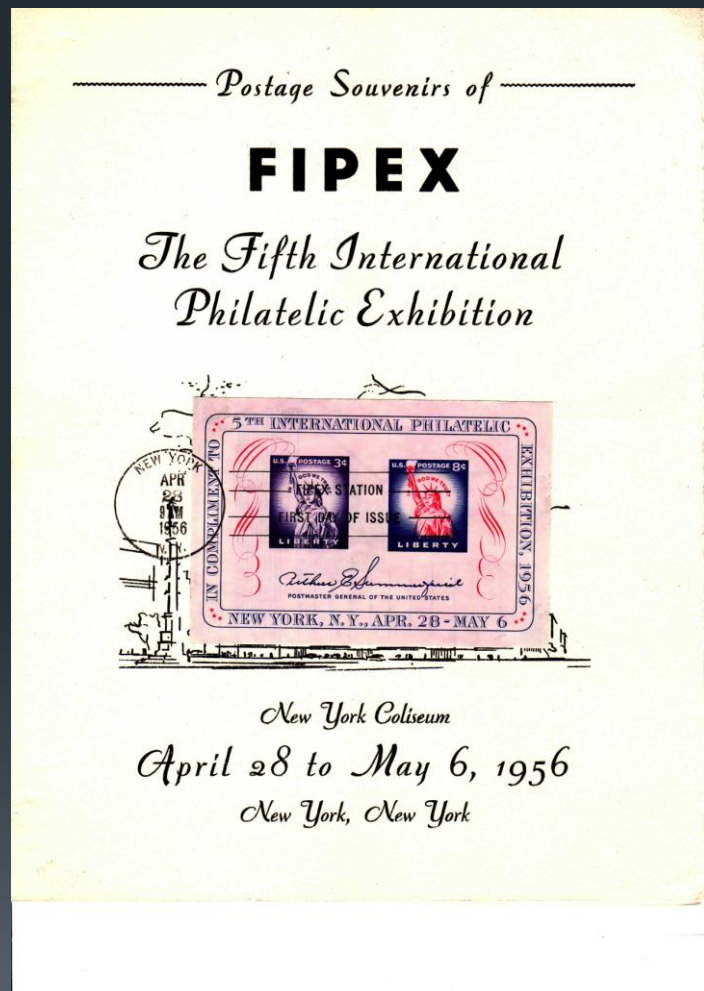
^c-Two versions of Catalogue: 1) *Linn's*; 2-Am Phil Congress

^d-172 pages of IPEX+228 Pgs. of Congress items (\$35)

Daily Publicity; Lounge Ribbon 40



From *Linn's Stamp News*

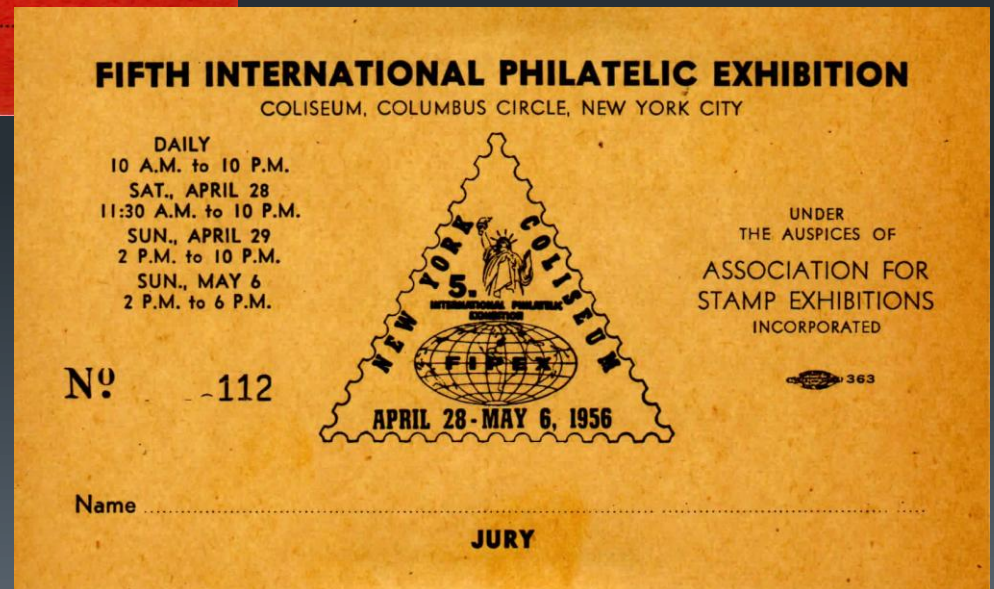
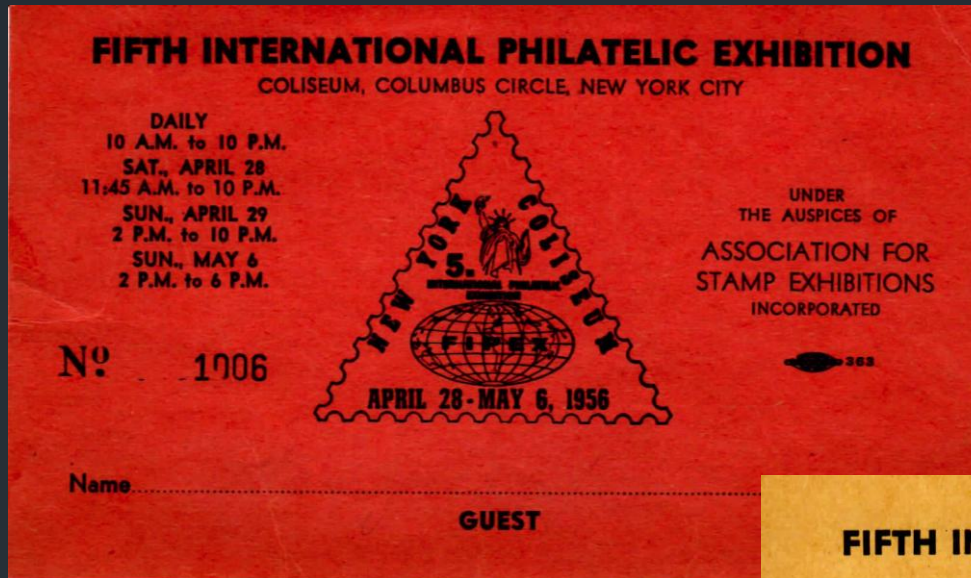


Visitors could meet George Linn at the *Linn's Stamp News* Booth and receive a free, sturdy souvenir folder to hold all four of the USPOD postal items.

*Note: The owner of this added a #1075 with first day cancel to front. There is also one on the back!

Color-Coded Pass System

42



Complementary Dealer Passes

43

FIFTH INTERNATIONAL PHILATELIC EXHIBITION
COLISEUM, COLUMBUS CIRCLE, NEW YORK CITY

DAILY
10 A.M. to 10 P.M.
SAT., APRIL 28
11:45 A.M. to 10 P.M.
SUN., APRIL 29
2 P.M. to 10 P.M.
SUN., MAY 6
2 P.M. to 6 P.M.

Nº 13123


Est. Price .24
City Am. Tax .01
TOTAL .25

Guest Ticket — Admit One
Charge to the account of
HERMAN HERST, Jr.
Shrub Oak, New York

UNDER
THE AUSPICES OF
ASSOCIATION FOR
STAMP EXHIBITIONS
INCORPORATED

363

APRIL 28 - MAY 6, 1956



FIFTH INTERNATIONAL PHILATELIC EXHIBITION
COLISEUM, COLUMBUS CIRCLE, NEW YORK CITY

DAILY
10 A.M. to 10 P.M.
SAT., APRIL 28
11:45 A.M. to 10 P.M.
SUN., APRIL 29
2 P.M. to 10 P.M.
SUN., MAY 6
2 P.M. to 6 P.M.

Nº 14794

Est. Price .24
City Am. Tax .01
TOTAL .25

Guest Ticket — Admit One
Charge to the account of
AMERICAN TOPICAL ASSOCIATION
49 Pershina Avenue, Yonkers 5, N. Y.

UNDER
THE AUSPICES OF
ASSOCIATION FOR
STAMP EXHIBITIONS
INCORPORATED

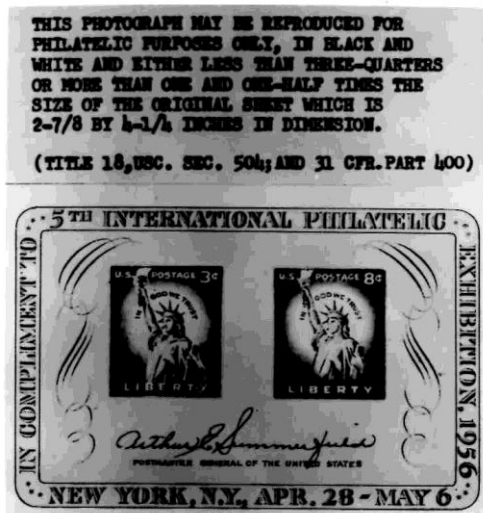
363

APRIL 28 - MAY 6, 1956



Official USPOD Photo News Release

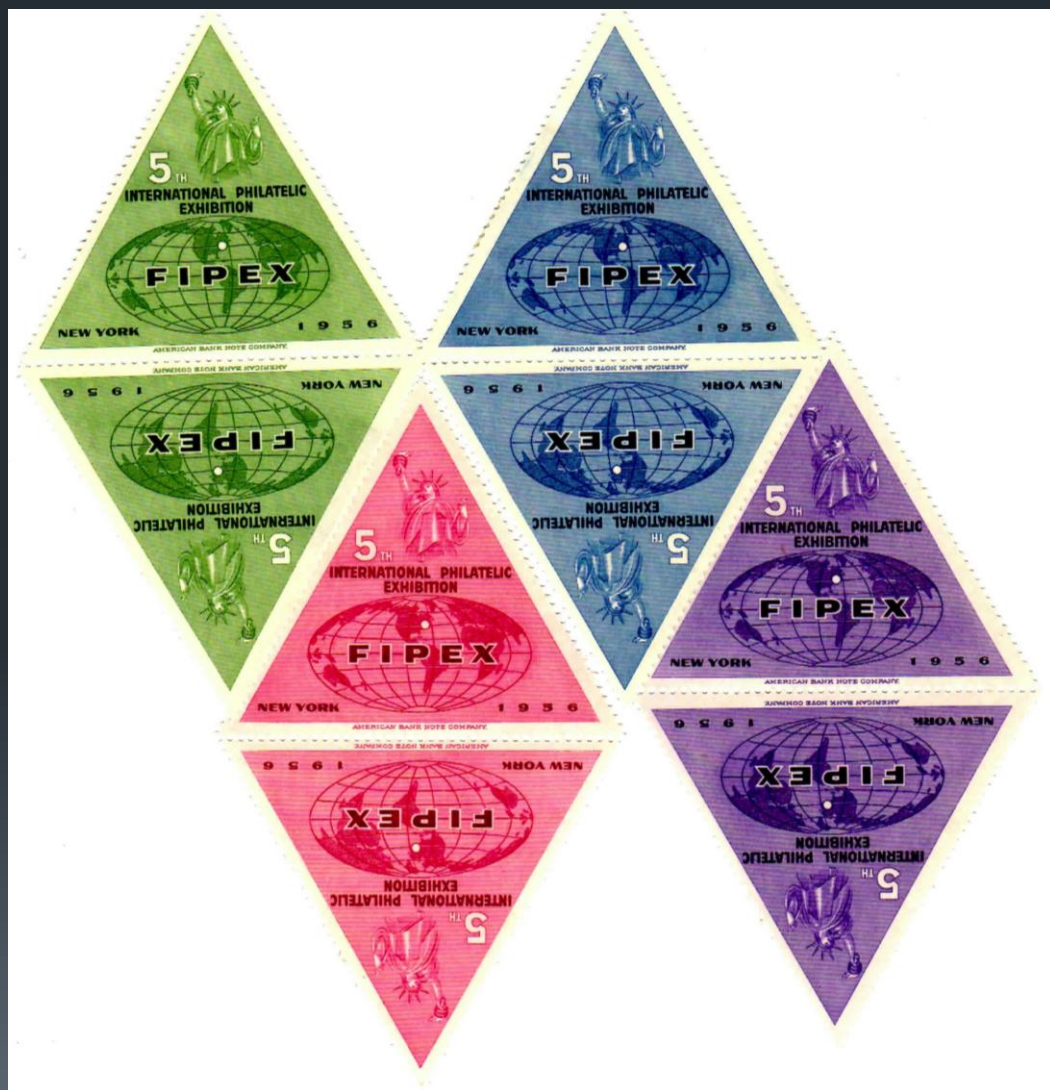
44



The two items in correct size proportion

ABNC's Last Int'l Cinderellas

45

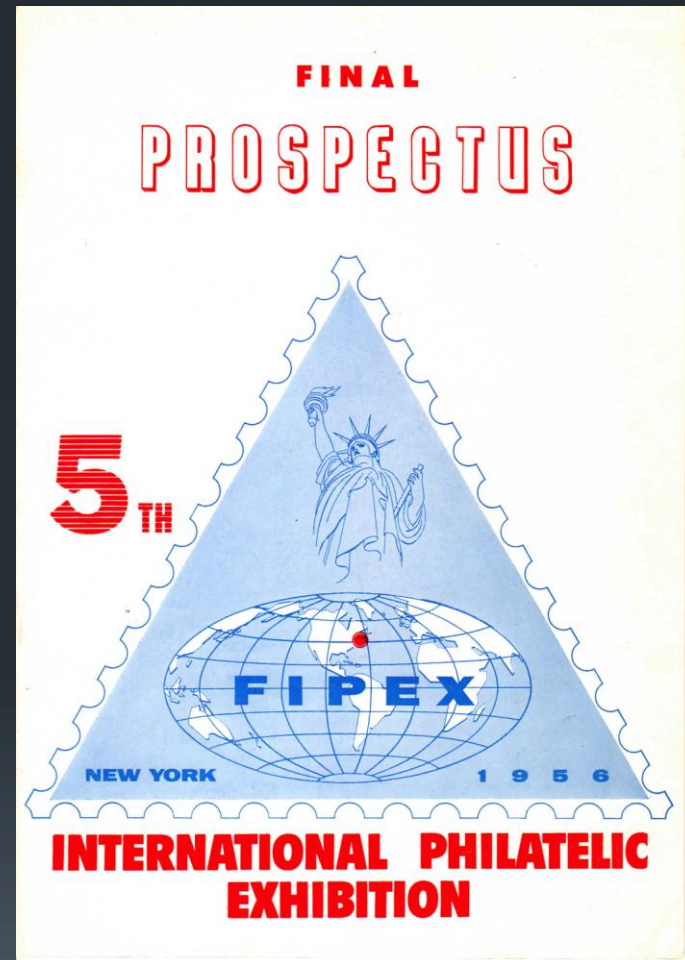
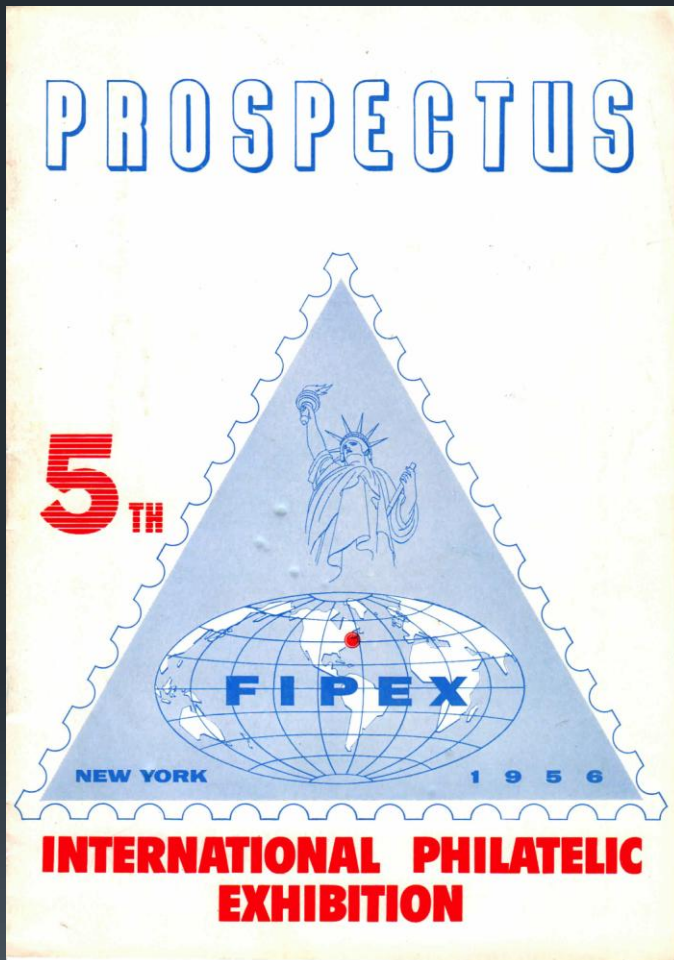


These were the last of the ABC promotional int'l show labels. The triangular shape and colors made them well represented through out the show.

With the advent of eye-catching show covers using official stamps and attractive cachets, the demand for the labels decreased in favor of the show covers. It is not a coincidence that the Washington Press with their iconic Artcraft covers had a great presence at the show including a large exhibit and supply of well-serviced covers for sale.

The Two FIPEX Prospecti...

46



Most international shows have 2-3 prospectus issued ahead of the event
The first was from April 1955, and the final from November 1955

April 1955 Advanced Prospective

IP Identifier

latest issue of

os of the

UNITED STATES

including
SESSIONS &
ORTH AMERICA

Popular U. S. Catalog

PAGES (5½ x 8½)
1000 ILLUSTRATIONS

ME . . . a complete 12-page, fully
IDENTIFIER, which shows collec-
en rare and common "look-alike"
to this famous Harris publication.
your own collection for valuable

States"—compiled by the experts
ump firm—is the most widely used
ld. Completely revised, the latest
ges, with more than 1,000 new,
ier-to-read type.

as mint position blocks,
nt sheets, perforation coils,
covers, proofs, and other

listings of U. S. Possessions
merica.

Only 25¢

PUBLICATION

AL CATALOG . . .
FINDER

the stamp collector. Includes a
and a wide variety of philatelic

at a glance the "nationality" of
to 10¢ alone!

digest to add to your collecting

CO.

ADVANCE PROGRAM No. 1

APRIL 1955

FIPEX

NEW YORK COLISEUM

MARCH 3-11, 1956

Eighth Avenue, 58th to 60th Streets (Columbus Circle)

New York City, U. S. A.

The Fifth International Philatelic Exhibition to be held in the United States of America under the sponsorship of The Association for Stamp Exhibitions, Inc.

RICHARD S. BOHN, *Chairman*

HARRY L. LINDQUIST, *Honorary Chairman*

THEODORE E. STEINWAY, *Honorary Treasurer*

Vice-Chairmen

JOHN J. BRITT *Collector Activities*
JACOB S. GLASER *Construction*
L. B. GATCHELL and HERBERT J. BLOCH *Exhibits*
PETER G. KELLER, 116 Nassau St., New York, N. Y. *Dealer Activities*
CARL H. PIHL, 77 Amherst Rd., Albertson, N. Y. *Public Relations*
PRESCOTT H. THORP, Netcong, N. J. *Publications*
EDWIN E. ELKINS, *Secretary* AGNES BURLINGAME, *Assistant Secretary*
SIDNEY F. BARRETT, *Treasurer* FRANC RITTER, *Art Director*

Inquiries may be directed to chairmen at addresses noted. Where no address is given send all communications to 22 East 35th Street, New York 16, N. Y.

REGIONAL REPRESENTATIVES

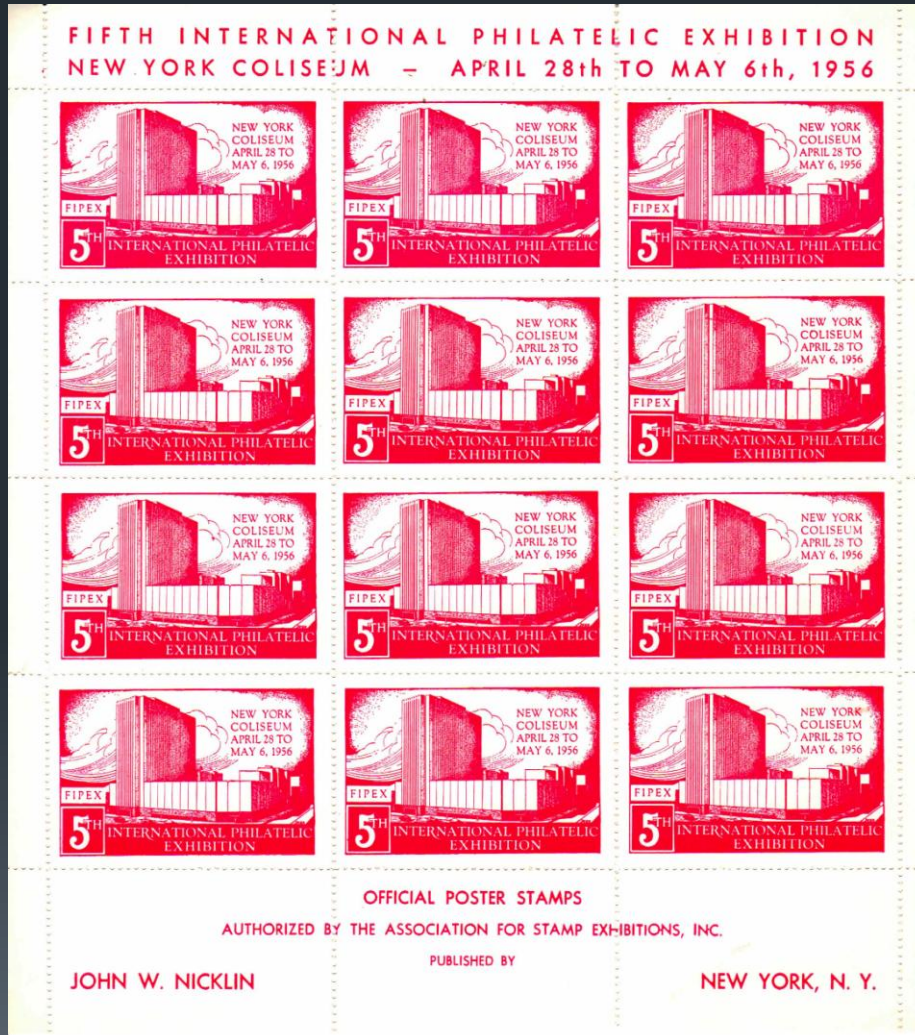
EARL P. L. APFELBAUM 1416 So. Penn Sq., Phila. 2, Pa.
SAMUEL and LEO AUGUST 43 William St., Newark 2, N. J.
JERE HESS BARR 11 Howard St., West Lawn, Pa.
HAROLD P. BURRELL Noroton, Conn.
DR. H. A. DAVIS 3421 Colfax "A", Denver 6, Colo.
HENRY CHALONER 2621 Ashby Ave., Berkeley 5, Calif.
CARTER GLASS, JR. Lynchburg, Va.
CHARLES HAHN 535 Willow Rd., Winnetka, Ill.
H. E. HARRIS 108 Massachusetts Ave., Boston, Mass.
DR. CLARENCE HENNAN 7602 So. Paxton Ave., Chicago 49, Ill.
BURLLEIGH JACOBS 2236 Menomonee River Pky., Wauwatose 13, Wisc.
ROBT. KNOBEL Anderson, N. C.
CHARLES F. MERONI 53 West Jackson Blvd., Chicago 4, Ill.
BARBARA R. MUELLER 1112 Linden Ave., Jefferson, Wisc.
THOMAS D. PERRY 301 E. Main St., Moorestown, N. J.
JOHN D. POPE III 818 Olive St., St. Louis 1, Mo.
BEN REEVES 4429 No. Keystone Ave., Chicago 30, Ill.
RAYMOND and ROGER WEILL 407 Royal St., New Orleans, La.

Note dates of 3-11 March. Due to a construction accident, the show was delayed by nearly eight weeks. The show then advanced to a start date of 28 April. This was the grand opening of the New York Coliseum, and it was big enough to hold two other large shows, the NY Auto Show and the NY Photography Show.

Other FIPEX Cinderellas



48



These red labels were the show's official poster stamps produced by stamp dealer, entrepreneur, and tycoon, JW Nicklin. These sheets were made in both perforated and non-perforated versions and were issued in four colors.

These sold in lots, the smallest being one sheet (of 12) in each of four colors for \$1.00.

For any 1939 New York World's Fair buffs, Nicklin was the one who created the large sheet of over 50 full color poster stamps.

1966 Int' l Philatelic Expo (SIPEX)^{49*}

*The narrative about how the show ended up in Washington, DC instead of NYC is worthy a presentation in itself. As of 8/64 it was scheduled for 4-9 March 1966 at the Statler-Hilton in NYC and to be called USIPEX (with its own emblem). It would be sponsored once again by the ASE.

Late in 11/64 it was announced that the show would be cancelled. Two factors played in the decision.

The first factor was financial. The '56 FIPEX lost money thus reducing the start-up fund for '66 USIPEX. Given a smaller treasury on top of ten years of NYC inflation, it's production was a gamble. This included the substantial rent of the Coliseum ten years later along with shelter, food, and drink for participants and dealers. The board of the ASE did not think it could go forward with the show under these circumstances.

The second factor was a difference in philosophy. The current ASE chairman wanted a smaller show that catered to the elite of the hobby with the most exclusive of dealers and exhibitors. The popular collectors, they contended, had the other ASDA shows in NYC, and this was sufficient.

So what happened.....

50

In Washington DC were a group of sophisticated collectors who formed the basis of the successful NAPEX, the successful annual DC area show. “We can do it,” they opined.

They based their impressions on a variety of variables. They had successful contacts with a large array of dealers from their annual NAPEX. Located in the DC area, their contacts extended to both the leadership of the USPOD and the Bureau of Printing & Engraving. DC offered a host of collateral activities for collectors and families. Finally, the cost of such an undertaking in DC was much less than in NYC. And they would hold the show in a hotel. Two firsts, a non-NYC IPEX and a hotel venue!

But could they do this in only 15 months, half the operational time of the previous shows. They convinced ASE that they could do it and were given the go-ahead.

And the rest is history. (The above is the short version.)

1966 Int'l Philatelic Expo (SIPEX)⁵¹



- Dates: 21-30 May 1966
- Location: Washington, DC
- Venue: Shoreham Hotel
- Hours: Open until 10:00 PM most days
- Attendance: +/- 200K
- Sponsor: Association of Stamp Exhibitors

1966 SIPEX Catalogue

52

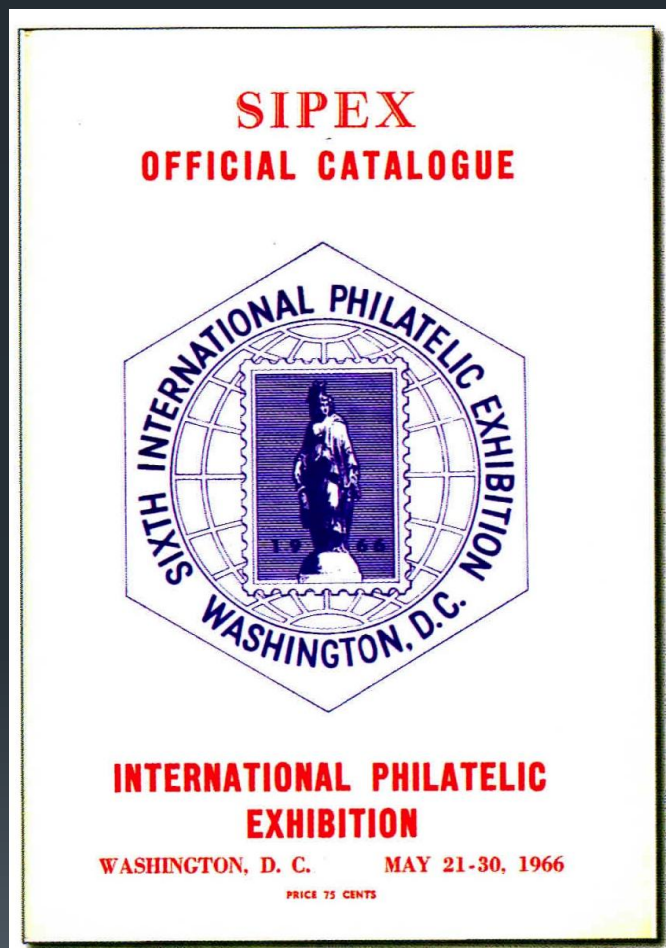


Image from Herb Trenchard

This catalogue is in black and white with show information regarding the show leaders and committee members, exhibit and jury information, other show information. It came in two versions, a thicker one with bound blank leaves between the pages listing the exhibits, perhaps for visitors to make notes. A favorite ad is the one selling the exhibit frames when the show closed.

The catalogue contains a a six page article by Herb Trenchard of the history of international shows from the first in 1887 in Antwerp, a 15 day event! Trenchard gave the criterion for an International listing, and by his calculation, SIPEX was the 100th of such events.

Some SIPEX facts

53

- SIPEX was the first U.S. Int'l to be judged by FIP Rules. This European organization for exhibit standardization was founded in 1926
- This was the 100th international show since Antwerp from 1 to 15 May 1887
- Many countries with postal administrations involved in the show held receptions at their respective embassies augmented with country exhibits
- USPOD very active in receiving and returning exhibits, those foreign and domestic.
- Herb Trenchard authors IPEX history article for the '66 show program This included the first five U.S. Int'l Shows and started a trend of IPEX history in subsequent IPEX catalogs
- SIPEX was last IPEX to allow albums as part of the exhibits
- SIPEX Firsts: Held outside of NYC, FIP patronage, and hotel venue
- Court of Honor has exhibits from the honor class of previous FIP shows
- First IPEX to give special status for Thematic & Topical category

Some More SIPEX Facts

- Broke ground with two unusual souvenirs which became a new collecting medium-Souvenir Cards.
- Attendance was +/-200K. This was less than in 1956, but SIPEX made a profit, and the dealers were well pleased. Money returned to all its guarantors.
- Opening address by PMG Larry O'Brian on the 39th anniversary of the Lindbergh flight (21st May)
- Cardinal Spellman displayed Lindbergh memorabilia.
- Sponsored by National Philatelic Exhibitions of Washington DC
- Authorized by Association for Stamp Exhibitions
- Patronage by FIP and APS
- United Nations sold stamps, and letters and cards thus franked could be mailed from the show

Entertainment, Tours...

- Opening ceremony music by the U.S. Marine Corps Band, The President's Own
- Nat'l Gallery of Art has exhibit of paintings that are depicted on U.S. stamps
- Klutznick Exhibit Hall of B'nai B'rith has exhibit of all Israel issues since establishment in 1948
- Daily tours for show goers of the BEP, a SIPEX supporter and other tours of DC such as the White House, the Capitol, and more
- MLB: Washington Senators Vs. the Kansas City Royals
- *Barefoot in the Park* performed at the National Theatre
- Monday, 30 May, the last day of the show was Memorial day. A trip to the Tomb of the Unknown Soldier was arranged

The Shoreham Hotel (Now an Omni)



- Built in 1930
- at 2000 Calvert St. N.W.
- FDR's 1st Inaugural Ball
- Special elevator installed for FDR
- Home to many U.S. politicians and foreign diplomats over the years
- Some of the famous: Bob Hope, Judy Garland, Aretha Franklin, Benny Goodman and many more
- Harry Truman played poker here on many occasions.
- Rudy Vallee played opening night

Exhibits-I

57

- 32 Judges; 16 American; Second opinion is 30/14
- Based on FIP rules with four official classes. However certain traditional classes unique to US philately were retained.
 - Official: Non-competitive
 - Court of Honor: From honor classes in previous FIP shows
 - Non-Competitive:: Exhibits by judges and/or officials
 - Honor: Received two or more gold medals at FIP shows
 - Other competitive classes from previous IPEXs such as U.S., Country, Air Mail, Topical & Thematic, Junior, Literature, General
- There was no “Best of show”
- Honor Class: Joel Olsson, Swedish classics
- International: Robert Gates, classic France
- National: Mr./Ms. E. Kilbourn for Confederate States of America
- Award Banquet for 700 with neither speeches nor head table

Exhibits-II

- Frames: 2,214 16-page frames
 - Plus the Bin Room with Albums (last year of such)
- Exhibitors: 500
- Five (5) exhibits were disqualified for “Undesirable stamps, miniature sheets, or issues boycotted or not recognized by the FIP.” This eleven (11) page catalog includes items that were never issued, contained questionable overprints, were private issues, ‘labels,’ items not valid for postage, suspicious perfins, and more totaling about 200+ items. Vast majority were DDR. This is worth an exhibit in itself!
- Court of Honor: Raymond Weill: Four frames of U.S. classics



Exhibit President, George Turner is at the lower left.

Bourse

- Dealers: 80
- Cost: \$550.00/10 days
 - This is \$4352 in 2020 dollars, about the same price for a 10'X'10 booth at NY-2016)
 - (Compare this to \$650.00 in NYC in 1956)
 - 35+ Foreign Postal Administrations

The USPOD at SIPEX

61

- Issued a 5¢ commemorative stamp, 5¢ souvenir sheet, and an 11¢ international rate postal card*
 - *First postal card printed in duotone, a blended ink for clarity
- An adjacent area was available for collectors to prepare their covers
- USPOD very active in receiving and returning exhibits, those foreign and domestic
- On display were the Postmaster General's gems from the collection and archives
- Cancelled covers: These were either entered into the mail stream or handed back to the postal customer

For the USPOD Bulletin Board

62

POST ON BULLETIN BOARD
5-Cent SIPEX
COMMEMORATIVE POSTAGE STAMP



AVAILABLE AT YOUR LOCAL POST OFFICE
MAY 23, 1966

This 5-cent stamp will be first placed on sale at Washington, D.C., on May 21, 1966, the opening day of the Sixth International Philatelic Exhibition.

This horizontal stamp, with white envelope set in gray background, was designed by Thomas F. Naegle of New York City. The simulated stamps are red, blue, pink and green. The address on the envelope is blue. Gray, red and pink will be applied by lithography. Black, blue and green will be printed on the Giori press. The stamp will be issued in panes of 50, with an initial printing of 115 million.

Collectors desiring first day cancellations may send addressed envelopes, together with remittance to cover cost of the stamps to be affixed, to the Postmaster, Washington, D.C. 20013. A close-fitting enclosure of postal card thickness should be placed in each envelope and the flap either turned in or sealed.

The envelope to the Postmaster should be endorsed "First Day Covers 5¢ SIPEX stamp." Orders must not include requests for uncanceled stamps. Requests must be postmarked no later than May 21, 1966.

U.S. GOVERNMENT PRINTING OFFICE : 1965 O-211-000

POST ON BULLETIN BOARD
5-Cent
SIPEX SOUVENIR SHEET



The 5-cent souvenir sheet being issued in compliment to the Sixth International Philatelic Exhibition will be first placed on sale on May 23, 1966 at Washington, D.C.

The design of the stamp, which will be released on the opening day of the show, is repeated in the souvenir sheet. The sheet, designed by Brook Temple of New York City, will measure 2 7/8" by 4 1/4". It will be printed in green on the Giori press, with an initial printing of 5 million.

To the right of the line drawing of the Capitol and Washington Monument is "Discover America," the theme of President Johnson's program to encourage travel in the United States by Americans and foreign visitors.

This souvenir sheet will not be sold at post offices throughout the country. It may be obtained from the Philatelic Sales Unit, City Post Office, Washington, D.C. 20013, on and after May 23. The usual postage and handling charges have been waived on this item.

Collectors desiring first day cancellations may send addressed envelopes together with remittance to cover the cost of the sheet, to the Postmaster, Washington, D.C. 20013. Envelopes should be addressed low and as far to the left as possible.

The envelope to the Postmaster should be endorsed "First Day Covers 5¢ Souvenir Sheet." Orders must not include requests for uncanceled sheets and they should not be combined with requests for first day cancellations of the stamp and postal card also being issued during SIPEX. Requests must be postmarked no later than May 23, 1966.

U.S. GOVERNMENT PRINTING OFFICE : 1965 O-211-001

POST ON BULLETIN BOARD
11-Cent
INTERNATIONAL AIR MAIL
POSTAL CARD



The 11-cent international air mail postal card will be first placed on sale at Washington, D.C., on May 22, 1966, in conjunction with the Sixth International Philatelic Exhibition. The stamp on the card is based on a logograph of the Commerce Department's U.S. Travel Service. It will be printed in red and blue on white paper stock.

Four photographs reproduced on the left of the card are indicative of the widely varying attractions awaiting the tourists. The imposing New York City skyline, the sands of Miami Beach, the grandeur of Mt. Rainier and a picturesque Indian on horseback typify a wide range of America.

Designer of the card is Robert M. Worley, chief illustrator for the Government Printing Office. The initial print order is 2 million.

This card will be available at post offices after the first day sale to meet the philatelic demand. It will also be on sale at the Philatelic Sales Unit, City Post Office, Washington, D.C. 20013.

Collectors desiring first day cancellations may submit orders to the Postmaster, Washington, D.C. 20013, plainly indicating the full name and address, INCLUDING ZIP CODE, with remittance to cover the cost, which is 11¢ each. The outside envelope to the Postmaster should be endorsed "FIRST DAY COVERS 11¢ POSTAL CARD." Orders must be postmarked no later than May 27, 1966.

U.S. GOVERNMENT PRINTING OFFICE : 1965 O-211-002

Air Mail Day

63



This is the first U.S. Int'l postal card, and the first printed in duotone, a lithographic process which blends the inks for rich color.



SIPEX FD Cancellations

These different cancels were available on all FDCs, outgoing mail, and a host of philatelic items from personal covers, menus, programs and more.

There similar collections of the cancel array for the 5 cent commemorative stamp and the 5-cent souvenir sheet.

These are repeated of a variety of cacheted covers.

The airmail card at the bottom has a gold engraved SIPEX seal.

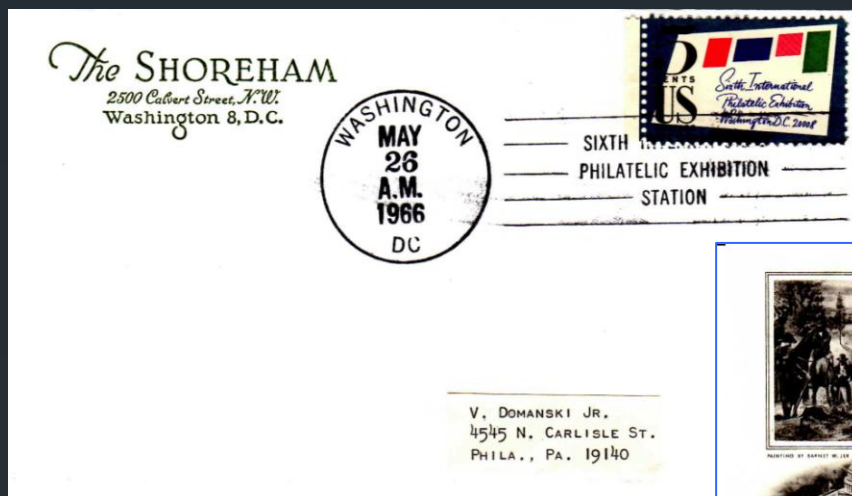
Mr. Zip Block of SIPEX Stamp

65



Of note is that in the printing of this stamp there were two passes on the press...

A few First Day Covers



The 5-cent commemorative was issued on Day-1 on the hotel venue stationary.

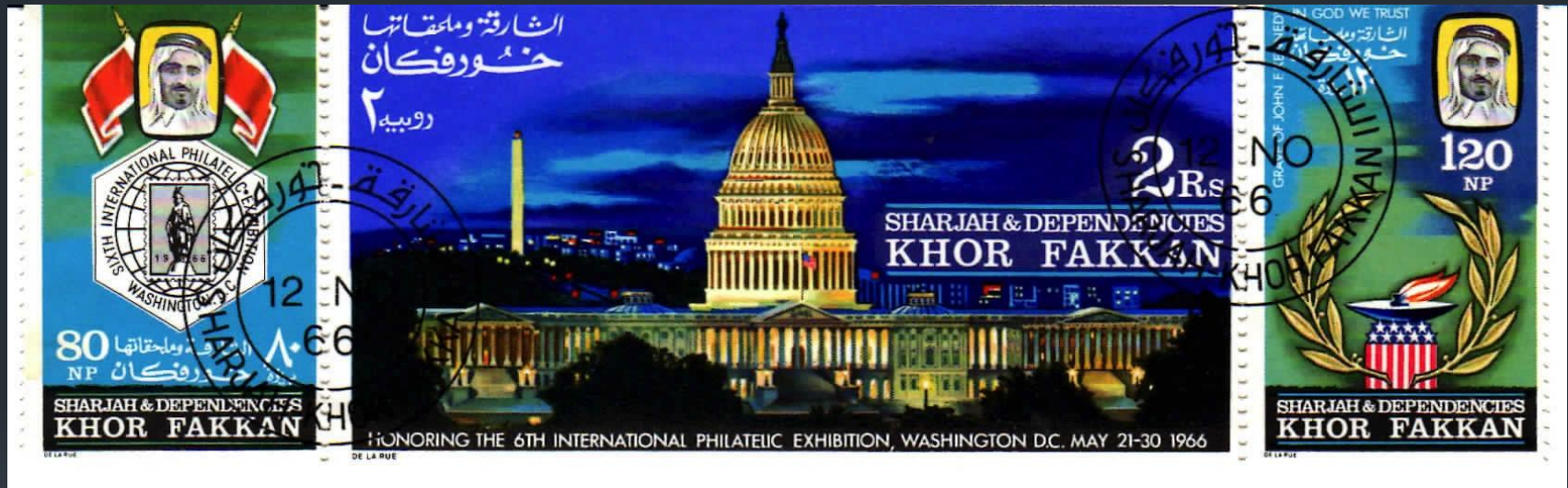
The cachet at right by Artcraft is the 'Official' first day cover.



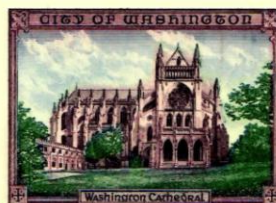
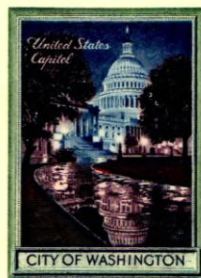
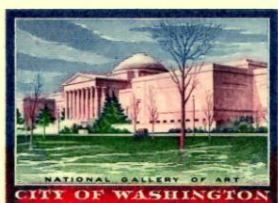
This is the lowest denominated Souvenir Sheet in U.S. history. Sold well at the show. Ultimately 15M were printed; unfortunately many remain extant to this day.

SIPEX-Anyone?

67



First of two souvenir cards...

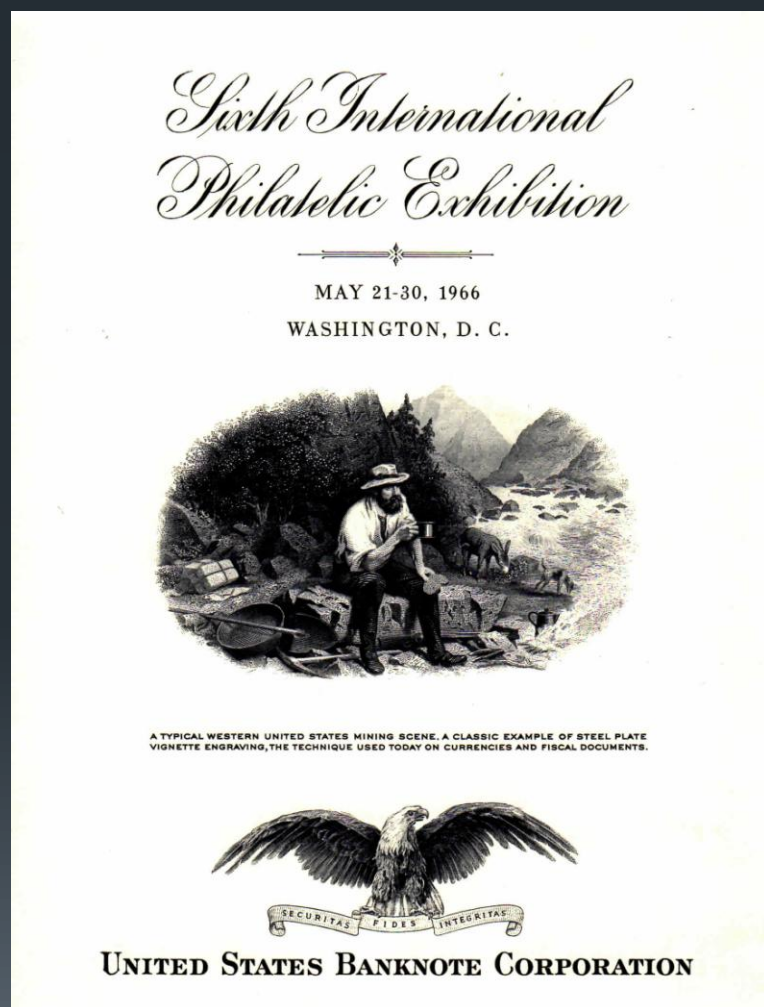


SIXTH INTERNATIONAL PHILATELIC EXHIBITION
WASHINGTON, D.C.

Designed, Engraved and Printed by Union Members of Bureau of Engraving and Printing

This attractive engraved multi-view Souvenir Card of Washington, DC was prepared by the Union Members of the Bureau of Printing and Engraving specifically for SIPEX for \$2.50. It is listed in Scott's Specialized Catalogue as SC3. Scott lists these cards from 1954 to 1999. Interestingly, Scott also lists numismatic souvenir cards from 1969 thru 2003

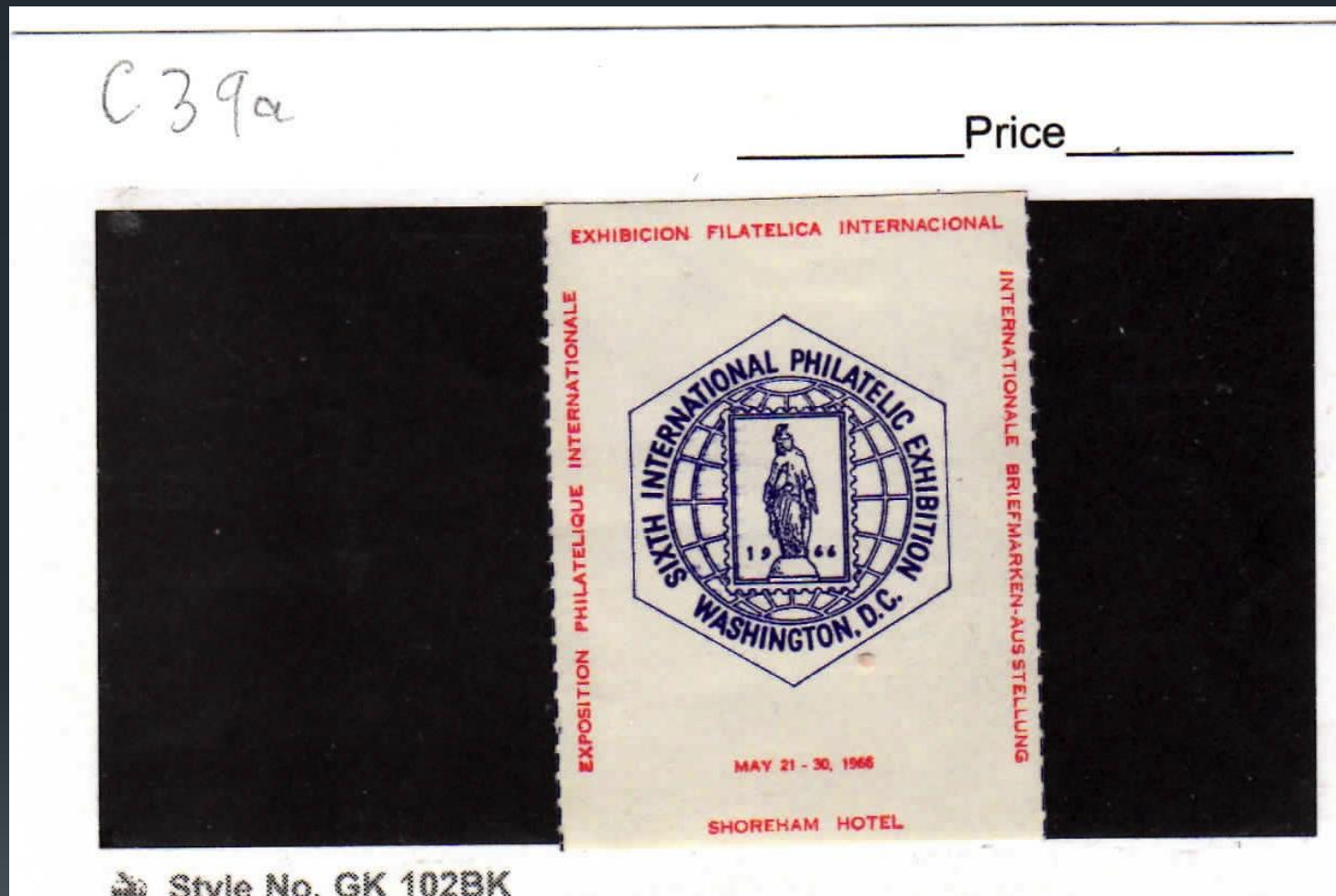
Second of two souvenir cards



This beautifully engraved card, 'The Miner Sheet', was made by the U.S. Banknote Corp for SIPEX, their only involvement with a U.S. International stamp show. They were distributed free of charge to several hundred SIPEX visitors. These are not very common.

Official Show Label

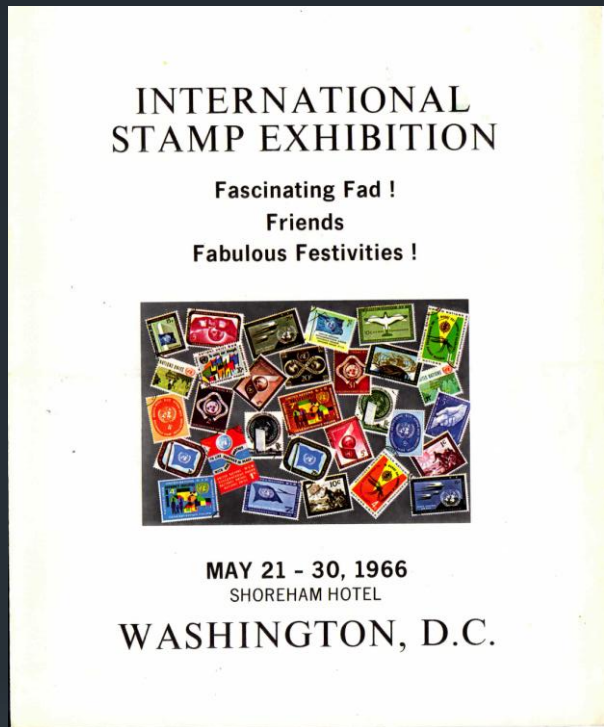
70



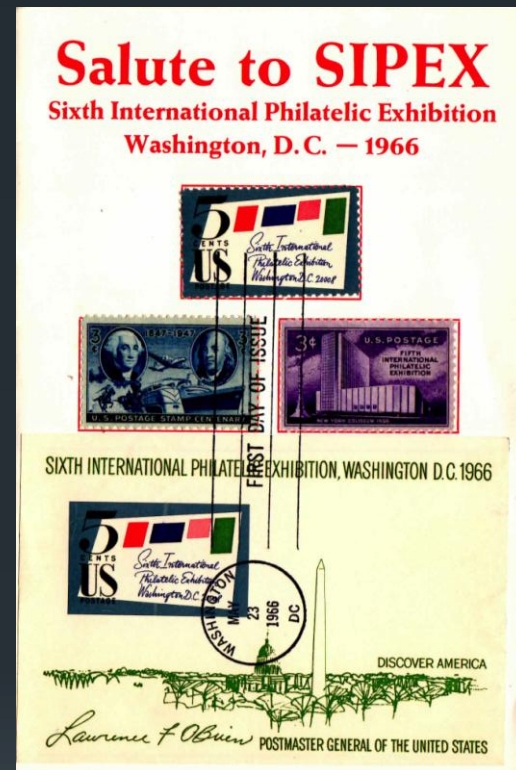
In three languages, this label contains the show data along with the emblem, the latter designed by the BEP which also served as the exhibit medals

More SIPEX Ephemera

71



Pre-show publicity flyer with six pages of show info including history, exhibits, USPOD Issues Dealers, Show activities, Sightseeing, Sponsors, catalogues Tickets, and Hotel info



A souvenir booklet by the ASE listing (inside) the previous five (5) Int'l shows which started in 1913

SIPEX Admissions Ticket

SIXTH INTERNATIONAL PHILATELIC EXHIBITION, INC.

Shoreham Hotel, Connecticut Avenue at Calvert Street
WASHINGTON, D. C. MAY 21-30, 1966

Daily
10 a.m. to 10 p.m.

Saturday May 28
Monday May 30
10 a.m. to 6 p.m.



Good for admission
to All
Exhibit Halls

PASS

Nº 248

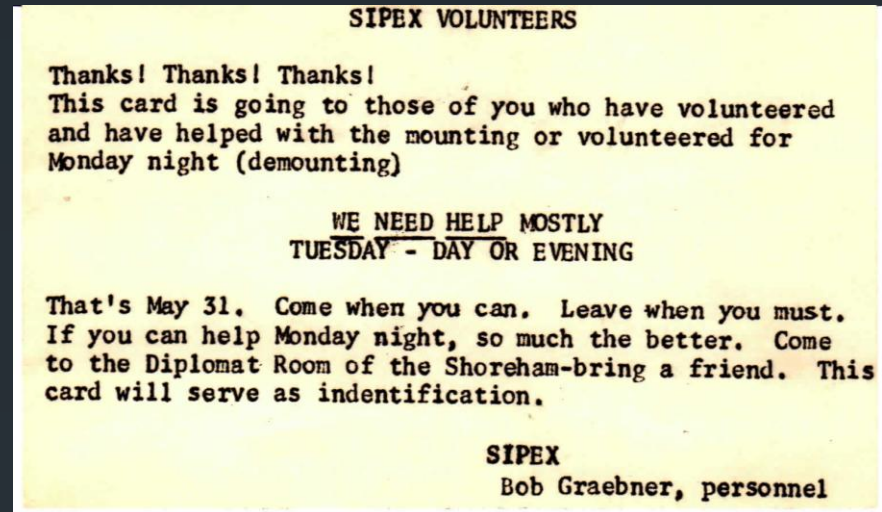
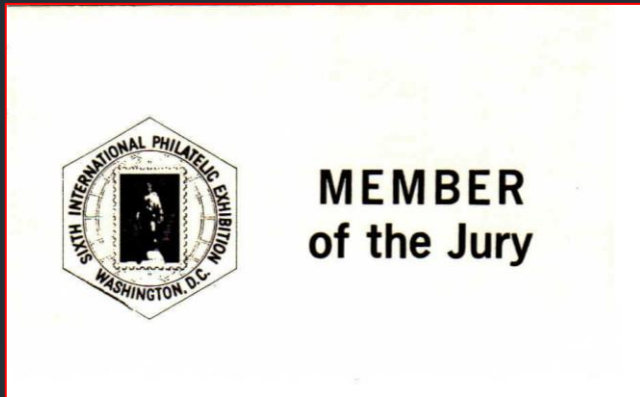
NAME

ROBERT B. BRANDEBERG

NOT TRANSFERABLE

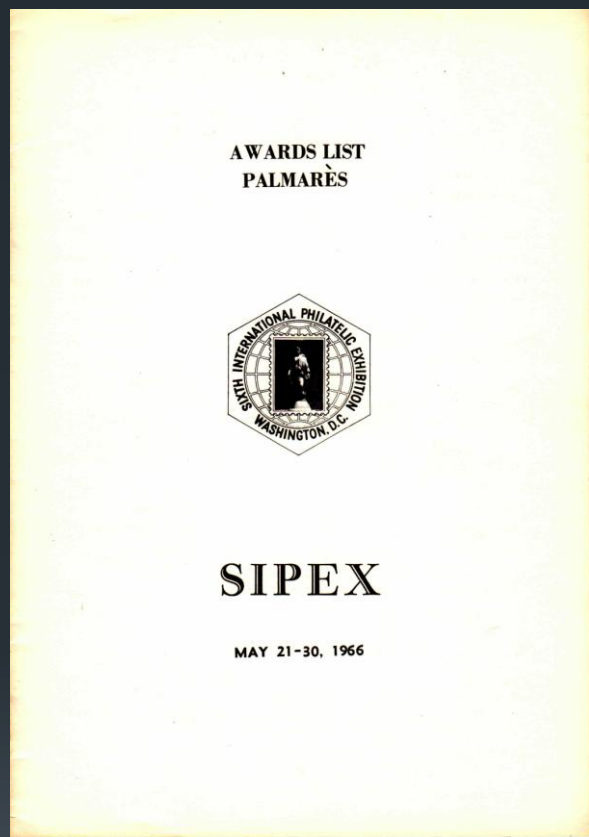
Other Ephemera at SIPEX

73

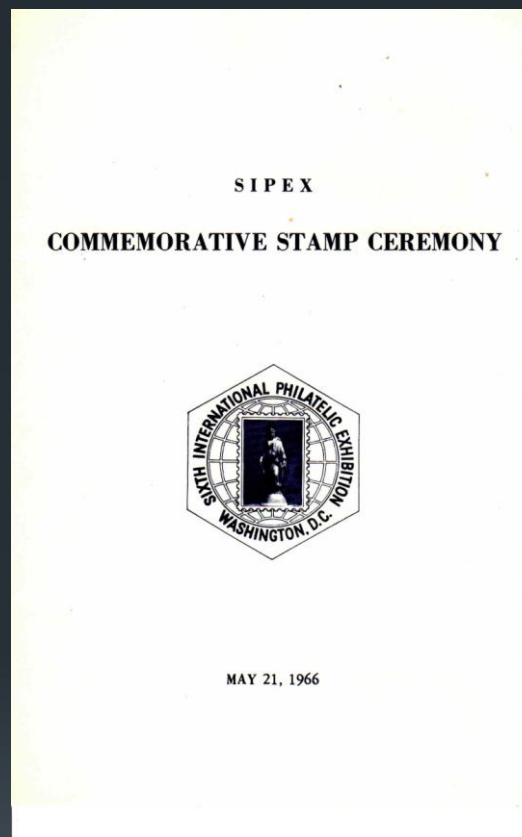


An interesting piece. Imagine facing the last day of the show with 3000 exhibit frames and wondering if you will have sufficient help to disassemble them and prepare for shipping and storage.

Some Publications at SIPEX



Award winners are listed



This is the cover of the First Day Ceremony for the 5 cent commemorative. (See below)

PROGRAM

Selections by United States Marine Band

- National Anthem. MSgt. Wm. D. Jones
U.S. Marine Corps
- Invocation. Dr. Frederick Brown Harris
Chaplain, U.S. Senate
- SIPEX Welcome. Svend Yort
- Address The Honorable Lawrence F. O'Brien
Postmaster General of the U.S.

Regency Ballroom
SHOREHAM HOTEL
11 o'clock



FIRST DAY OF ISSUE

The five-cent commemorative postage stamp, issued on the occasion of the Sixth International Philatelic Exhibition, continues a tradition of Post Office Department cooperation with philately which goes back to 1926, when the second such event was held in this country.

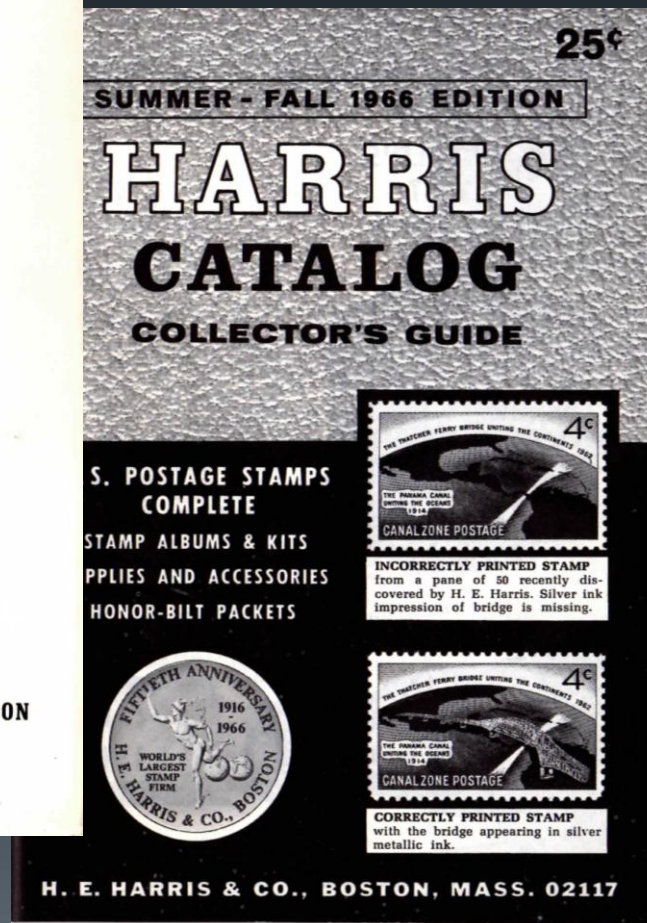
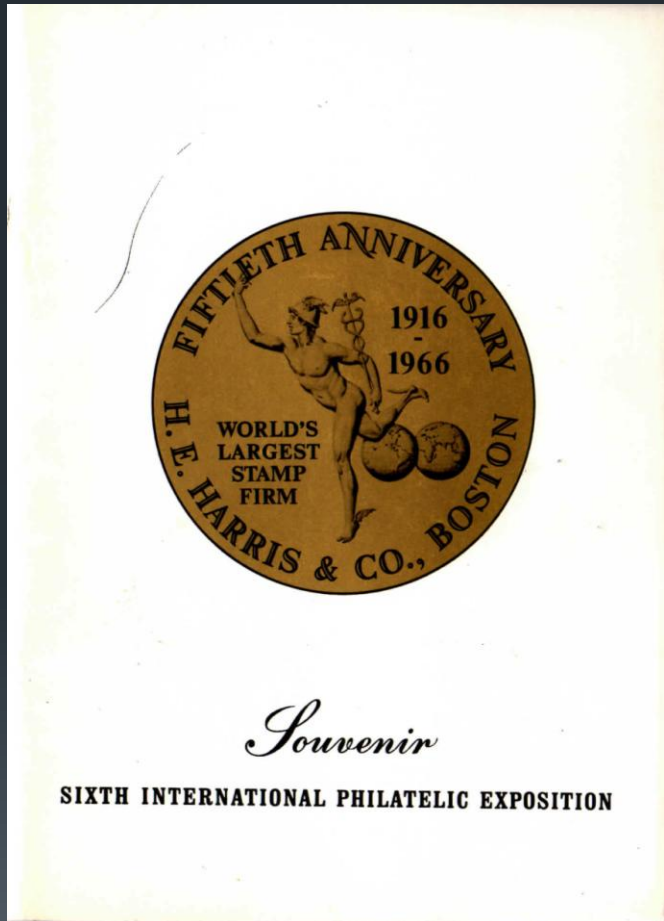
The stamp was designed by Thomas F. Naegele of New York and engraved by Howard F. Sharpless of the Bureau of Engraving and Printing from a model by Robert J. Jones. It has been printed by a combination of intaglio and lithography in an order of 115,000,000.

International stamp exhibitions such as SIPEX held at 10 year intervals in the United States, bring together many collectors and outstanding collections from all parts of the world on display, meetings and programs which are both educational and a contribution to international friendship.

Inside the 21 May First Day Ceremony at SIPEX

Dealers & Advertisers @ SIPEX

76



The 1966 Summer-Fall Catalog of the HE Harris Co. of Boston. They issued this with a special cover honoring the show. The cover's inside content contains information about the company on its 50th anniversary. Other advertisers recognized the show with fancy covers for their regular publications.

1976 Int'l Philatelic Expo: (Interphil76)⁷⁷

- **Interphil76** coincides with the Bicentennial celebration in the nation's birthplace, Philadelphia, PA. 200th (in progress for years)
 - There are multiple albums extant containing all the worldwide stamps recognizing the U.S. Bicentennial
- Dates/Times: 29 May to 6 June 1977; 11:00 am to 8:00 pm
- Civic Center of Philadelphia is the venue
- IPEX Passports first introduced at **Interphil76**
 - This results in special cancels for each day of the show
 - Printed by same company making official U.S. passports
- First IPEX catalog with partial color
- USPS (Formerly USPOD up to 7-1-71) has multiple issues
 - First IPEX stamp issued ahead of show, a trend that continued to '16
- Of the foreign issues recognizing the Bicentennial, several of these stamps note the **Interphil76** event.

1976 Int'l Philatelic Expo: Continued⁷⁸

- FIP Patronage again at this show. This will continue through NY WSS'16
- Significant support from APS. Many staffers involved.
- First IPEX with USPS Commemorative Panel by ABNC
- United States Government Court: (In addition to the USPS)
 - Bureau of Engraving and printing
 - Bureau of the Mint
 - United States Envelope Company
 - American Banknote Company
 - Smithsonian Institution
 - American Revolution Bicentennial Administration

Sightseeing, Entertainment, Tours

- ❖ Opening Night Champaign Reception
- ❖ Catalogue Map for self-tour of Center City Phila.
- ❖ Philadelphia Phillies Baseball at the Vet
- ❖ Reception on Dewey's Flagship, *USS Olympia*
- ❖ Longwood Gardens and Winterthur Tour
- ❖ Skyline Tour from Penn Mutual Tower
- ❖ Fairmont Park-Site of the 1876 World's Fair and U.S. Centennial celebration
- ❖ Picnic at Philadelphia Zoo
- ❖ Independence Hall
- ❖ Franklin Institute
- ❖ Philadelphia Museum of Art
- ❖ Collectors Luncheon at Germantown Cricket Club
- ❖ Awards banquet at Bellevue-Stratford Hotel



The Philadelphia Civic Center ⁸⁰

The Venue: Interphil76

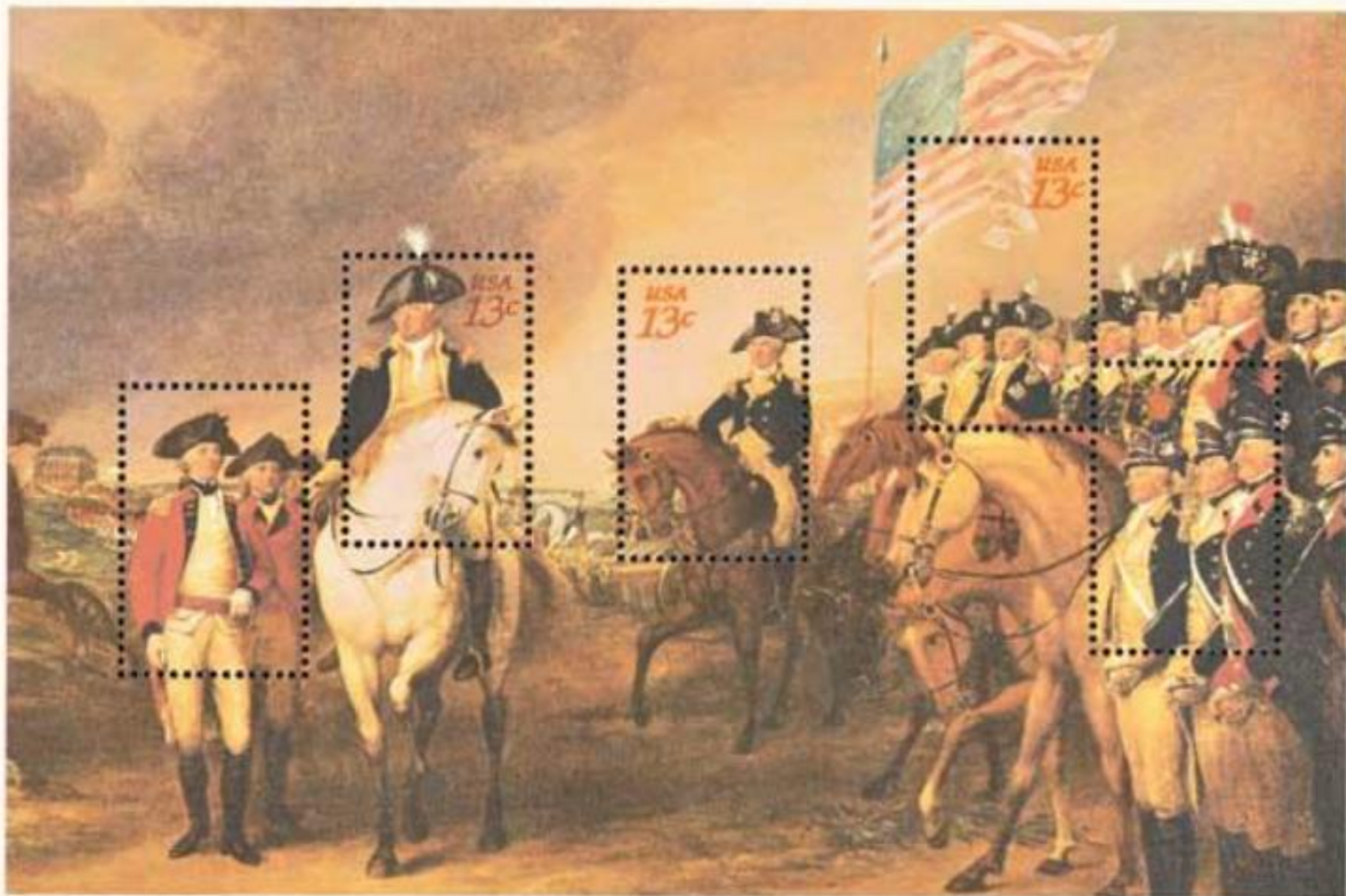


- ◆ Also called Convention Hall
- ◆ Near U. Penn and Franklin Field (West Phila.)
- ◆ 1899-2005: In decline since 1967 with the new Spectrum facility
- ◆ Holds 15K people for a convention
- ◆ Four Nat'l Conventions 1900, 1936, 1940, and 1948
- ◆ Beatles '64, Stones '56
- ◆ College Basketball

Image from the Interphil76 catalog.

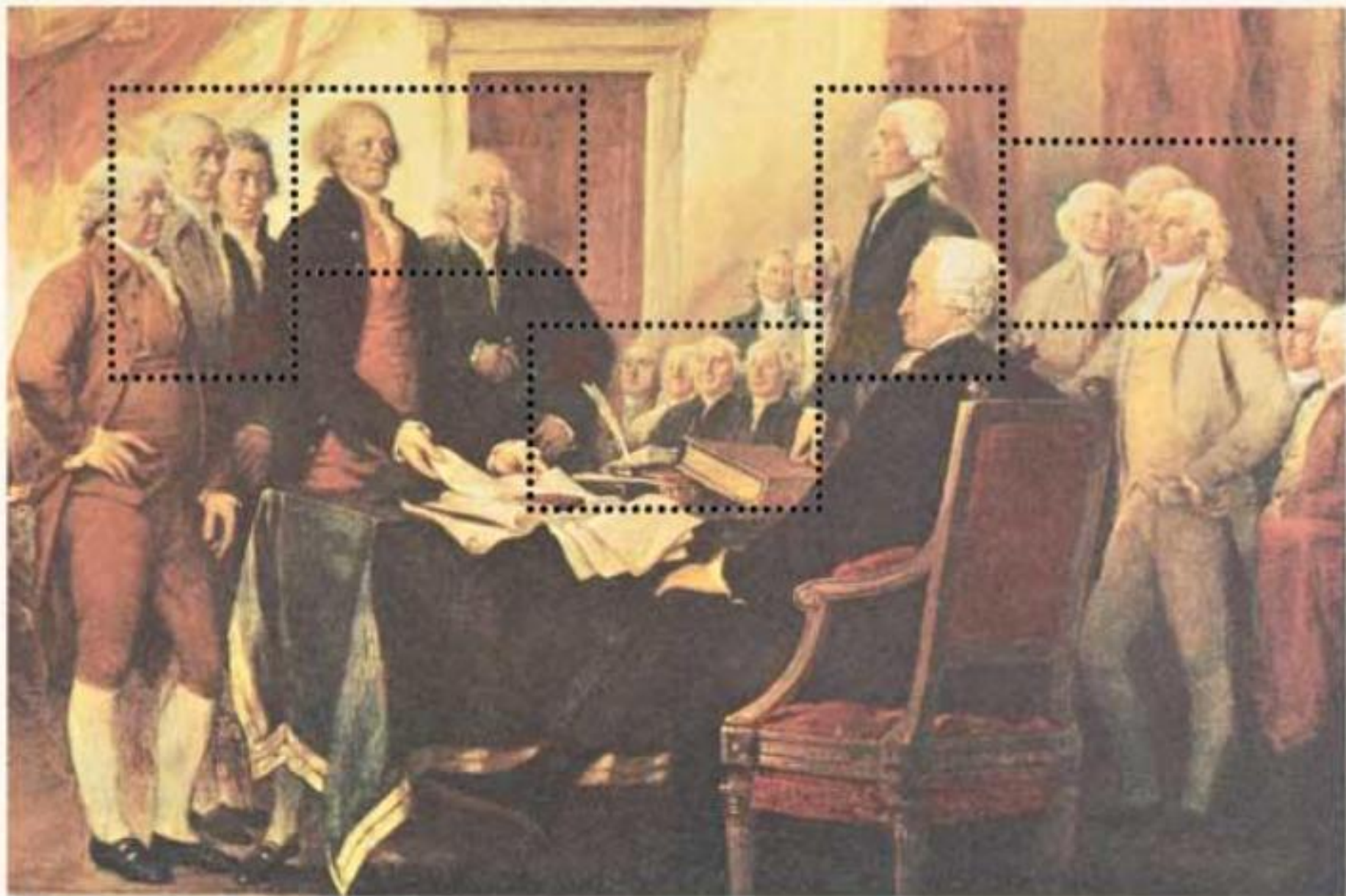
~~USPOD~~ USPS Show Related Issues

- Four souvenir sheets of \$4.30 face value (No mention of the show)
- Issued at the show on 29 May 1976-'Interphil' noted only on package
 - Declaration of Independence and ■ Surrender of Cornwallis
 - Both by John Trumbull
 - Washington Crossing the Delaware
 - Emanuel Leutze and Eastman Johnson
 - Washington Reviewing his Ragged Army at Valley Forge
 - William T. Trego
- 13¢ **Interphil76** Commemorative Stamp (Dates, location, etc.)
 - Issued in advance, 17 January '76 in Philadelphia
- 13¢ Commemorative honoring Ben Franklin issued at the show on 1 June (No mention of Interphil76)
- New-Commemorative Panel (New USPS product established in 1972). Prepared by the American Bank Note Company
- First IPEX where exhibits were by frame only; no more albums!



The Surrender of Lord Cornwallis at Yorktown
From a Painting by John Trumbull

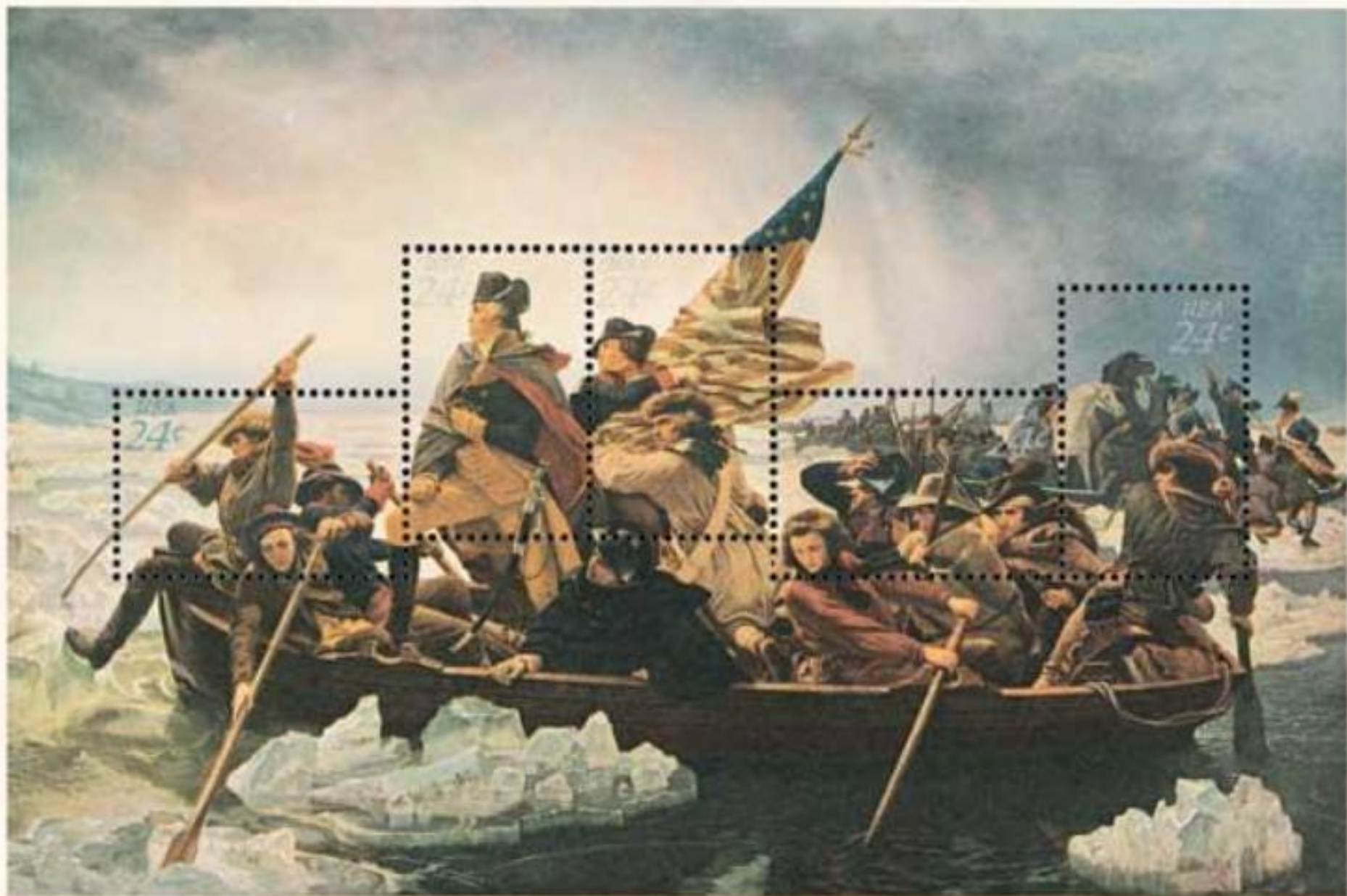




The Declaration of Independence, 4 July 1776 at Philadelphia

From a Painting by John Trumbull





Washington Crossing the Delaware
From a Painting by Emanuel Leutze / Eastman Johnson





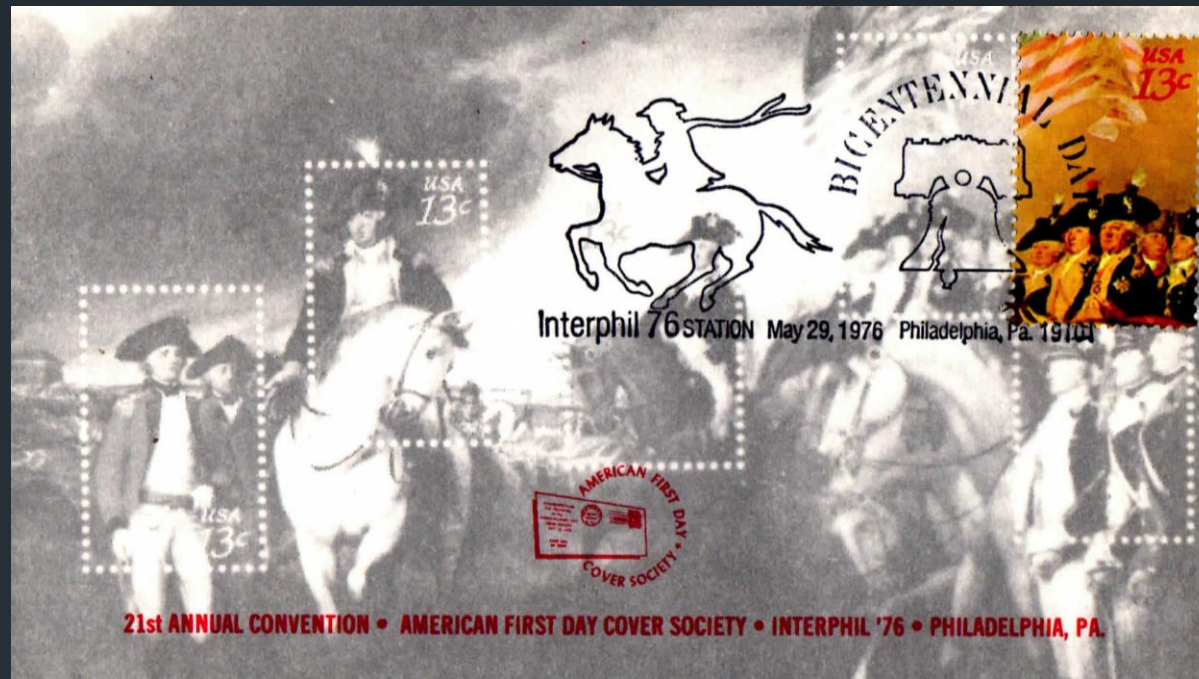
Washington Reviewing His Ragged Army at Valley Forge

From a Painting by William T. Trego



The Problem...

86



Individual stamps were difficult to remove due to the creative perforation method. Further with the coloration of the stamps, the country name and denomination were readily apparent in about five (possibly seven) of the twenty stamps. Thus these stamps were not popular with for cover prep at the show. The stamp illustrated above was one of a handful amenable for a show cover. It is cancelled by the first of nine show cancels on 29 May.

The Solution...

INTERPHIL 1976

MAY 29 <i>Bicentennial Day</i>	MAY 30 <i>Federation Day</i>	MAY 31 <i>Patriots Day</i>
JUNE 1 <i>International Day</i>	JUNE 2 <i>Dealers Day</i>	JUNE 3 <i>Collectors Day</i>
JUNE 4 <i>Specialists Day</i>	JUNE 5 <i>Societies Day</i>	JUNE 6 <i>Writers Day</i>

AMERICA CACHETS



Collectors Day

INTERPHIL 76 Station June 3, 1976 Philadelphia, Pa. 19101



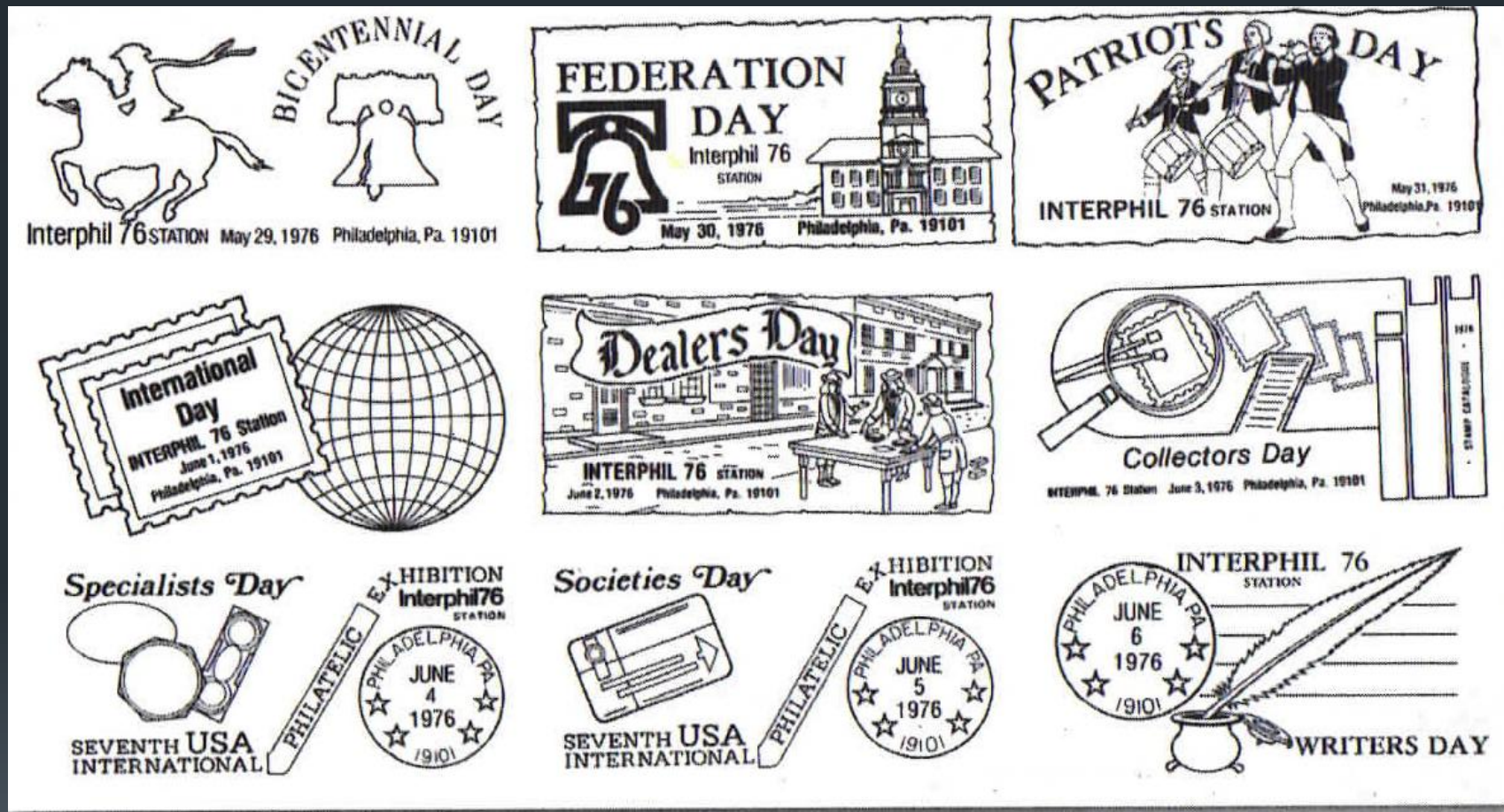

Philadelphia

A variety of other 13¢ definitive and commemorative stamps (many with a Philadelphia or patriotic theme) were used in preparation of **Interphil76** covers. Single-stamp usages from the 20 stamps from the four revolutionary souvenir sheets are difficult to come by today. In the above cover, the Day-6 Cancel of 3 June (Collectors Day) was used.



It is very difficult to see the denomination and country name on the Souvenir sheet stamps, especially those on the right.

Interphil76 Daily Passport Cancels⁸⁹



These cancels are found on a host of covers, souvenir cards, and other philatelic ephemera. (Image from Steven J. Rod.)

For the purist...continued

90

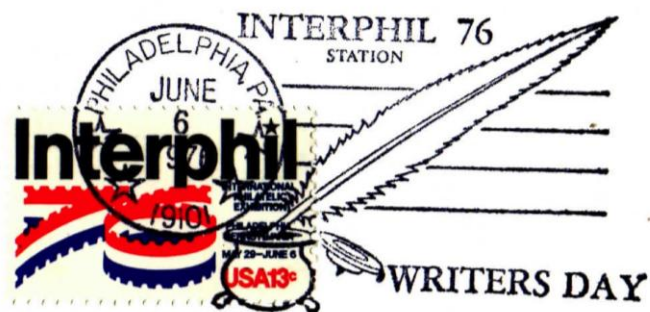


Cropped
image

Issued in advance for publicity to promote the show. It has just what is needed: The show name, the purpose, the location, the dates, the denomination, and a logo. As my friend Jack would say when he was having a good day, "Paulie, It don't get no better than this!"

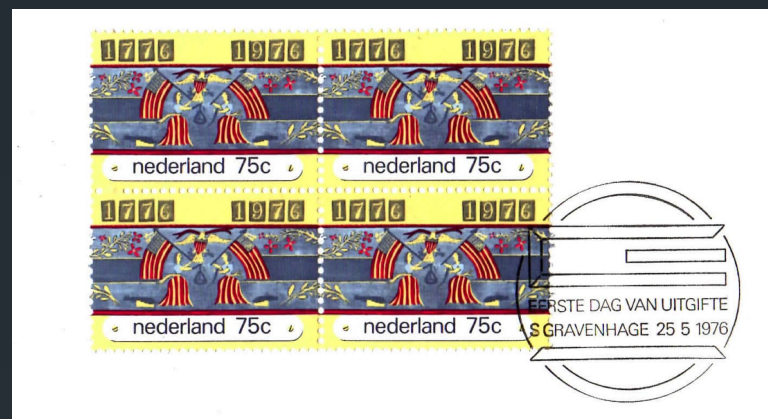
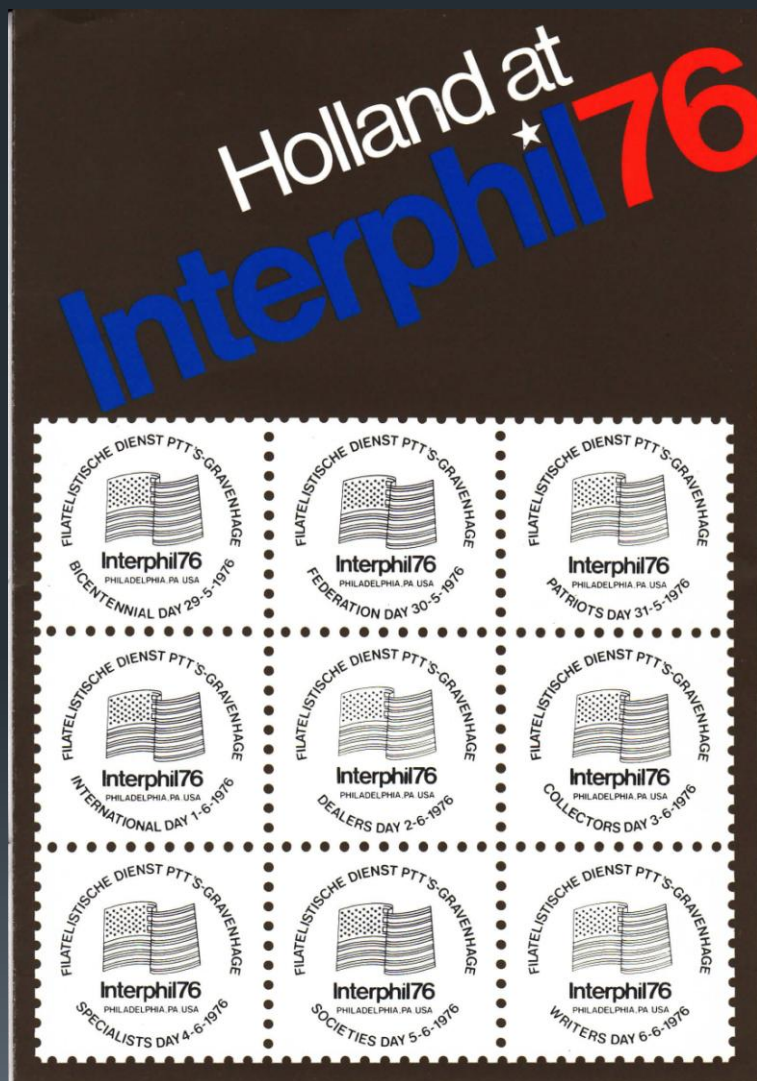


Artemaster
One Nation Indivisible
First Day of Issue



Day-10 **Interphil76** cancel for Writers Day is seen above

Daily cancels for Netherlands



Block of Dutch stamps were included in the broadside to the left and were cancelled just prior to the [Interphil76](#).

The brochure also promotes Holland's [amphilix 77](#), advertised as the only philatelic world exposition in that year to come.

The USPS at Interphil76



Ben Franklin stamp issued at **Interphil76** on **1 June 1976**. Covered on 5 June, Day-8 of the nine (9) show cancels. This one is for “Societies Day.”

For the Interphil76 purist

94



Top: An Artmaster Cachet on this First Day of Issue Cover of With the Interphil76 stamp



Bottom: One of the shows Artcraft covers, again, the 'official' cachet maker for Interphil76 and cachets since 1939. They also made several engraved Interphil76 and Bicentennial related souvenir cards



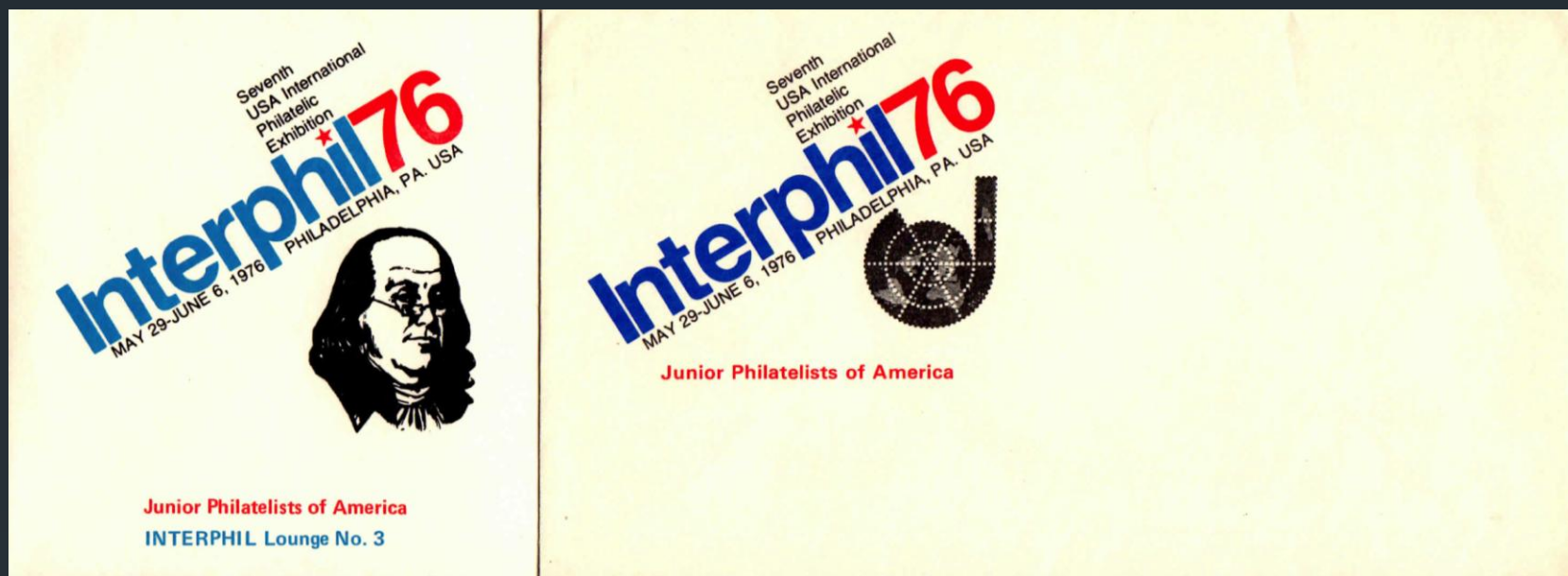
A Colorano 'Silk' cachet on this first day cover



A Fleetwood Cachet for **Interphil76**

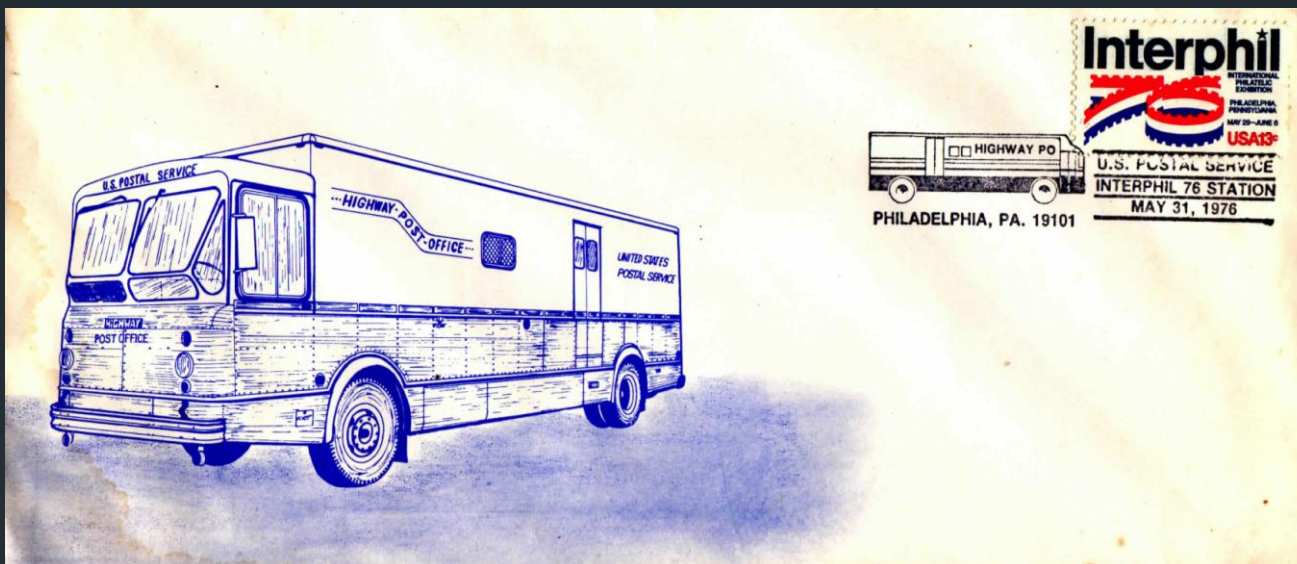


Official Postmasters of America Commemorative Issue



Junior Philatelists of America cachet **Interphil76**

(Two (2) overlapping covers)



Last run of the USPSD Highway Post Office

Highway POs Started On 10 Feb. 1941. The fleet reached 200 vehicles. These supplemented the RPOs and but were crowded out by the air buses and other faster and more efficient mail and package processing systems.

On June 30, 1974, the last two U.S. Postal Service Highway Post Offices in a fleet that once numbered more than 200 made their final runs between Cleveland and Cincinnati. The Highway Post Office (HIPO) whose cancellation appears on this envelope was one of these two vehicles making the last run. The vehicle is now used as an exhibit to call attention to that era of U.S. Postal Service history. The Highway Post Offices were started in 1941 as successors to the mail cars on passenger trains, and have gradually given away to air taxis and other mail transportation and processing techniques necessary to meet present-day service standards. The first Highway Post Office run was established on February 10, 1941, between Washington, DC and Harrisonburg, VA.



USPS Activities at Interphil76

100

- Large presence with biggest sales space of the show
- Large flat-bed printing press set up to demonstrate the printing process making broadsides for show goers. This has been a consistent exhibit since 1926 (with BEP)
- PO windows for new issues, and other windows for special cancels
 - Long lines and great business all week long.
- “200 Years of Postal Service”: A large multifaceted program with items and information about the USPS. This included:
 - Small theatre showing film, America the Beautiful relating to stamps
 - Last of the Highway Post Office Vehicles
 - 24 Frames (Bicentennial related) stamps, artist sketches, die proofs, and imperf sheets among others

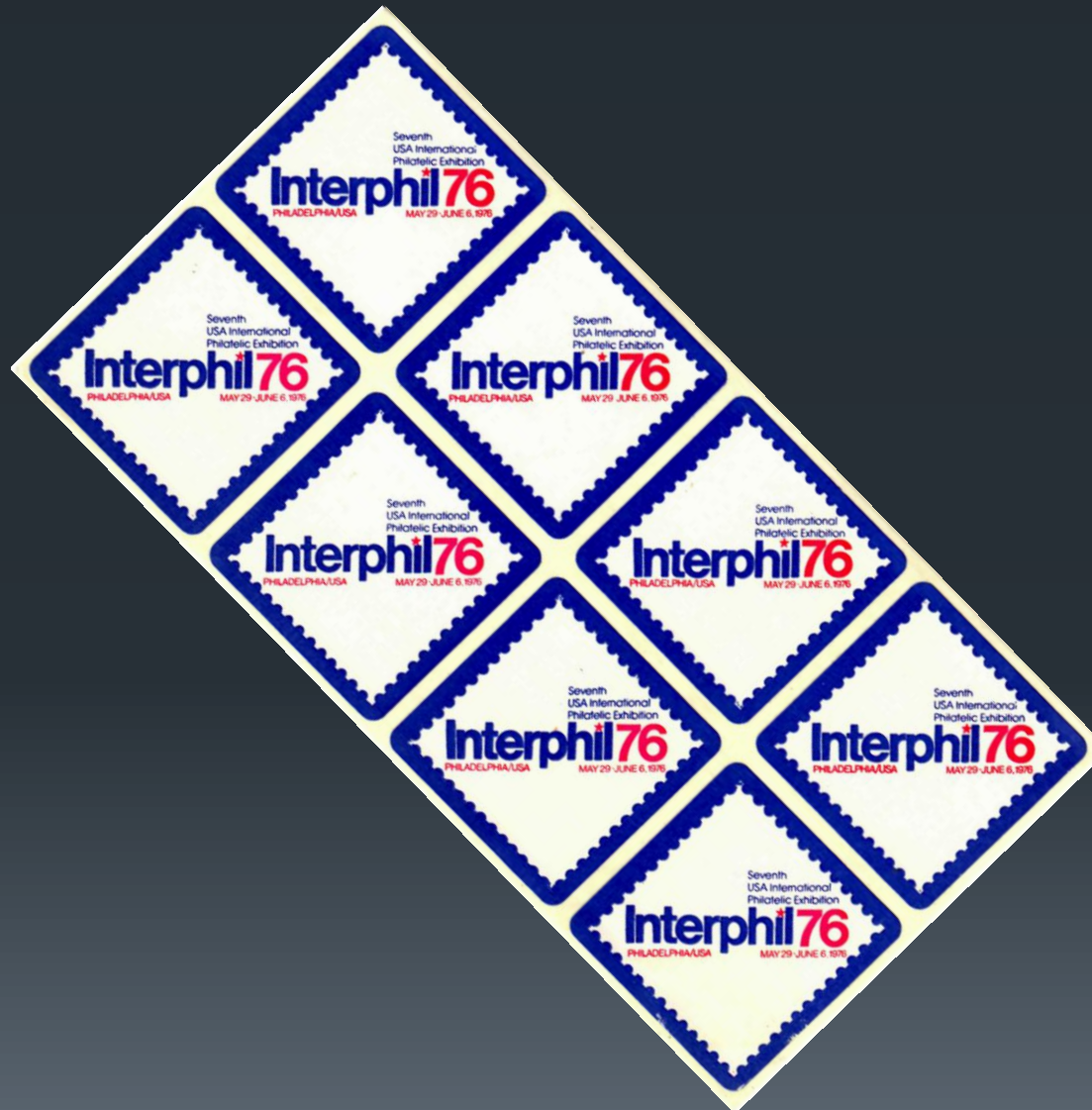
The Bourse at Interphil76

101

- Stamp Dealers-105 from around the world
- Largest vendor was the USPS
- There were 12 super booths, i.e. Stanley Gibbons, Lighthouse, Scott
 - Several dealers made >\$100K
(Equivalent to \$450,600 in 2020 dollars)
- Foreign Postal Administrations-35. Selling postage, philatelic products, and passport cancelation
- Philatelic Societies-35; To receive members and recruit new ones

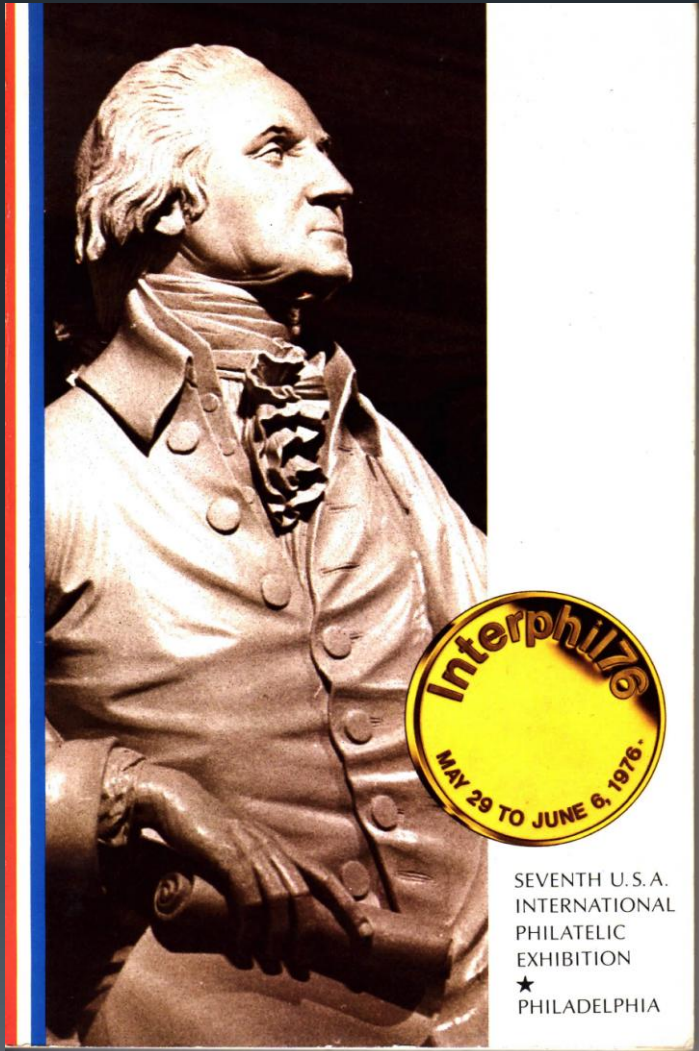
Interphil76 Labels (Self-stick)

102



Interphil76 Catalogue

103



IPEX catalogues are a wealth of information regarding the shows to include exhibits, special events, entertainment, meetings, histories, stamp illustrations, local maps, major players, and 'doings' and much more.

This catalogue was one of the first to introduce partial color in parts throughout the issue. Most specifically the centerfold with the **Aristocrats of Philately**. Started a wonderful trend.

The American Revolution Bicentennial Administration honored Interphil76 with an engraved souvenir sheet created by the Bureau of Engraving and Printing in DC. This item was bound into the catalogue (between pps-56-57), and is listed but not valued in the 2021 Scott Specialized U.S. Catalogue among the souvenir cards. (See next slide.)



*This commemorative is
dedicated to the International
Philatelic Exhibition, 1976, in
recognition of the contributions of
the world philatelic community
to the Bicentennial of the
United States.*

John W. Warner

*Administrator, American Revolution
Bicentennial Administration*

INDEPENDENCE HALL
PHILADELPHIA, PENNSYLVANIA
1776-1976



Modifications of the 10¢ regular postage stamp of 1956
and back vignette of the \$100 currency note
produced by the BUREAU OF ENGRAVING AND PRINTING

The copying of this print is restricted by Title 18, U.S.C., which prohibits the unauthorized reproduction
in whole or in part of currency, postage stamps, or other securities of the United States.

The American Revolution Bicentennial Administration honored **Interphil76** with an engraved souvenir sheet created by the Bureau of Engraving and Printing in DC. This was technically the first bound philatelic item in an IPEX catalogue.

Interphil¹⁰⁵76 Exhibits and beyond

- Number of frames: 2500-3000 (estimates vary per reference)
- 33 Judges (four to judge literature) from 19 countries including 10 Americans
- Categories include (FIP):
 - U.S.A.
 - British Commonwealth
 - Europe
 - Latin America
 - Rest of World
 - Topical
 - Aerophilately
 - Misc. (9 exhibits such as Christmas Seals, #1s of the world, Inverted centers
 - Youth (Five age groups from 12-25)
 - Literature : •Books & Studies; •Stamp columns from newspapers; •Philatelic periodicals; and •Stamp Catalogues

Exhibits-II

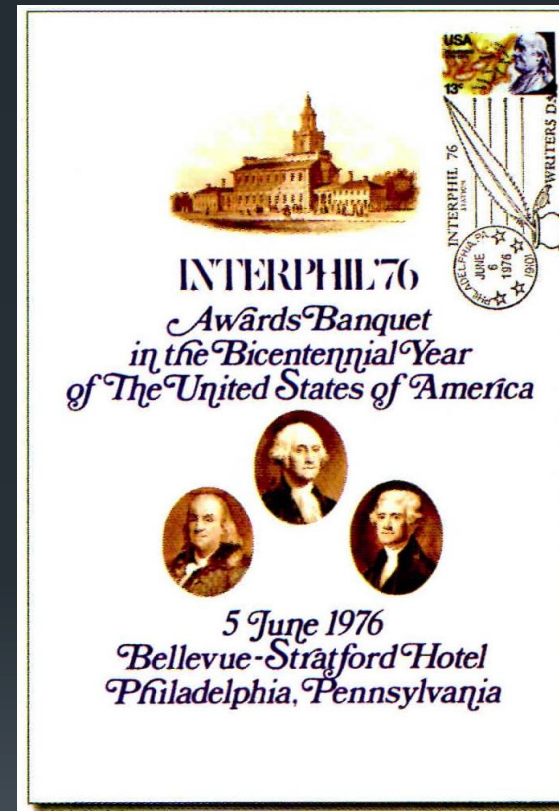
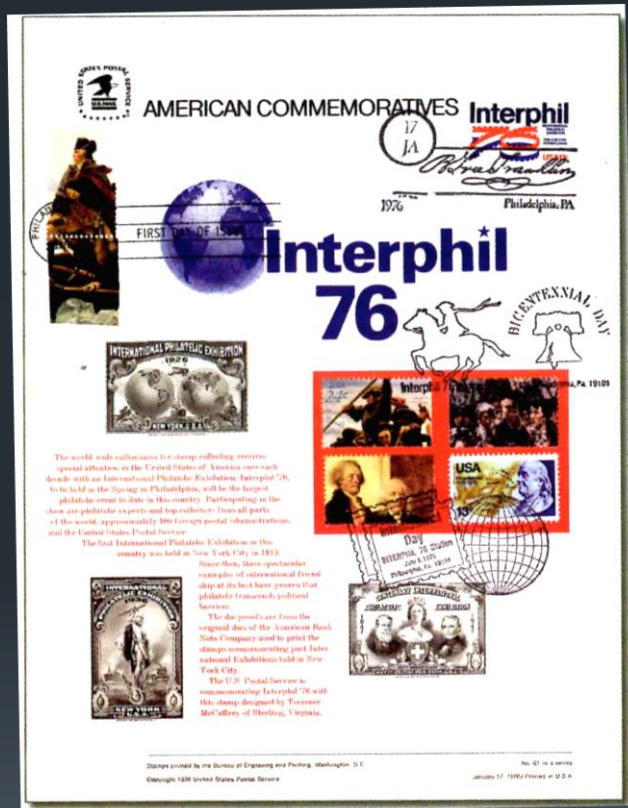
- This is first IPEX without albums as part of the exhibit
- Four Grand Prize Levels
- International: Afghanistan
- National: Classic United States-1847 to 1861
- Special Honor: Hawaiian Missionaries
- Honor Class (Best among previous Int'l High Award Winners): Great Britain

Exhibits...III

- **Aristocrats of Philately:** This was display of the world's greatest rarities. This assemblage began with Anphilex'71 at the NYC Waldorf on the 75th anniversary of the Collector's Club and continued through Interphil76 to NYWSS-16. The name has changed, but the best of the bests are on display. A few of the **Interphil76** gems include: The 1¢ British Guiana (its 6th IPEX), two Mauritius covers, each with two "Post Office" Stamps, Alexandria Blueboy, several inverts (in blocks!), unused multiples of U.S. #^s1 and 2, Hawaiian missionary covers, Bermuda Perot PM provisional, and you get the point
- **Court of Honor:** Items from the Royal Collection (5-frames), Nat'l British Postal Museum (5-frames), Canadian Nat'l Postal Museum (5-frames), The Philatelic Foundation (2-frames), and items from the collection of Prince Rainier III (3-frames)

Interphil76 Commemorative Panel and Award Program

108



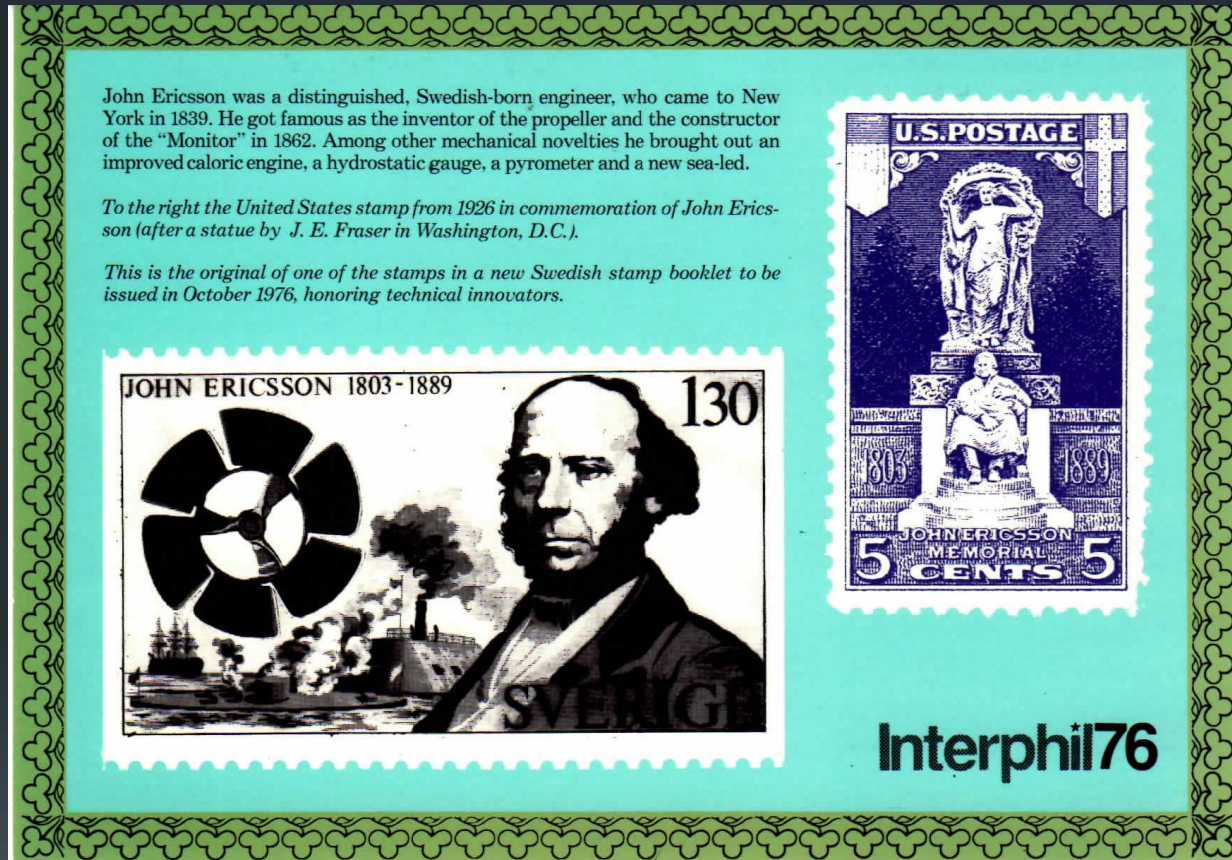
Panels started in 1972. This is a first for an IPEX issue. Printed American Bank Note Co.

(Note souvenir added to upper right.)

Both Images from Trenchard



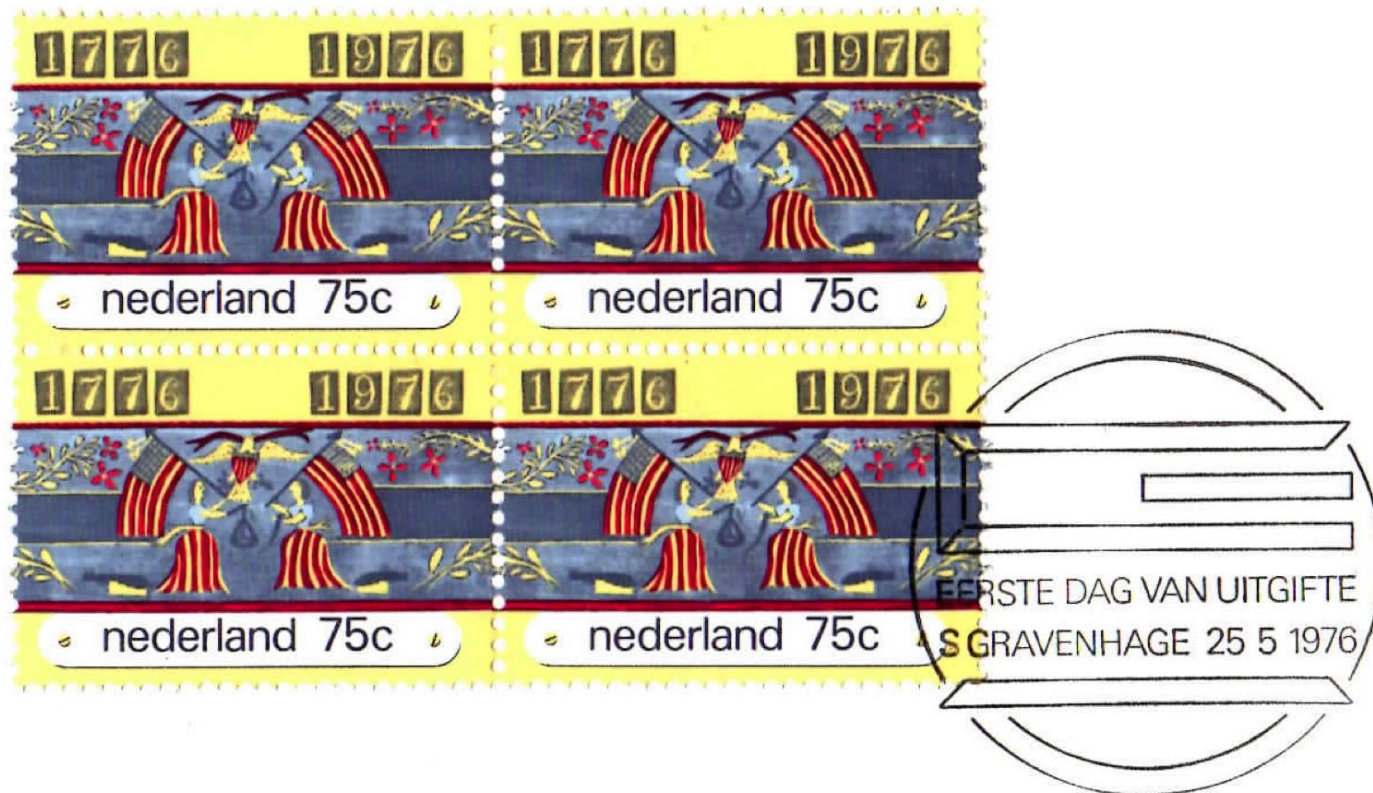
Interphil76 PPC to Honor U.S. Bicentennial



Contributed by the Swedish Post Office

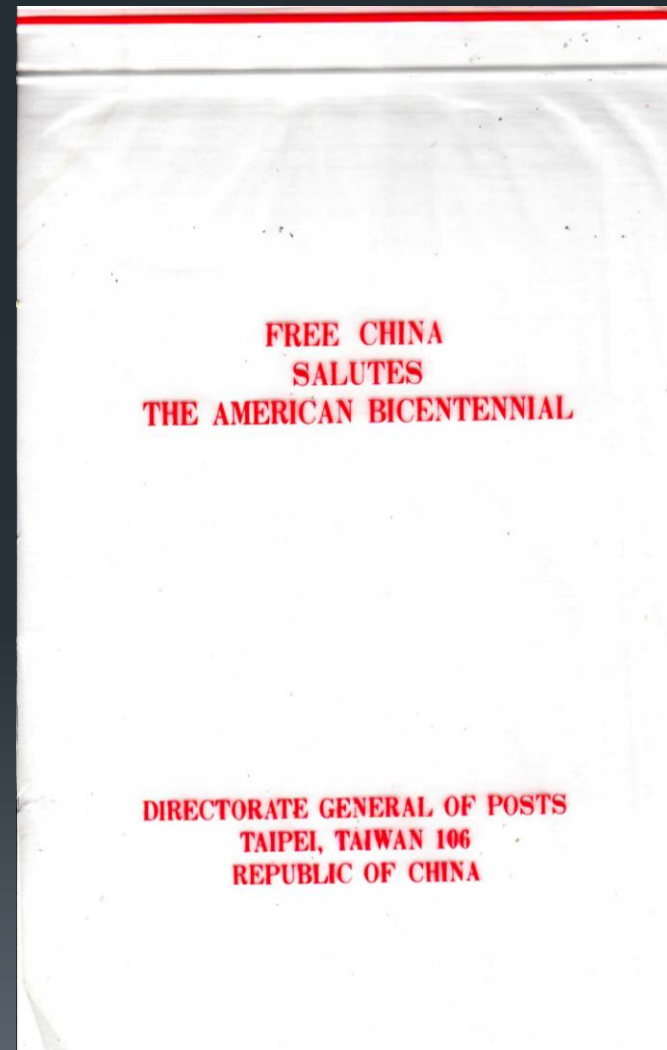
Netherlands & The Bicentennial

111



Cancelled four (4) days before the [Interphil76](#)

ROC & The Bicentennial



Republic of China and Interphil76



Hungary Honors Interphil76

114

Commemorating
the American Revolution
Bicentennial 1776-1976



PHILADELPHIA LIGHT HORSE FLAG 1775



Julian Silecky, M.D.
2550 Broadway
Lorain, Ohio 44052



Interphil76 Passport

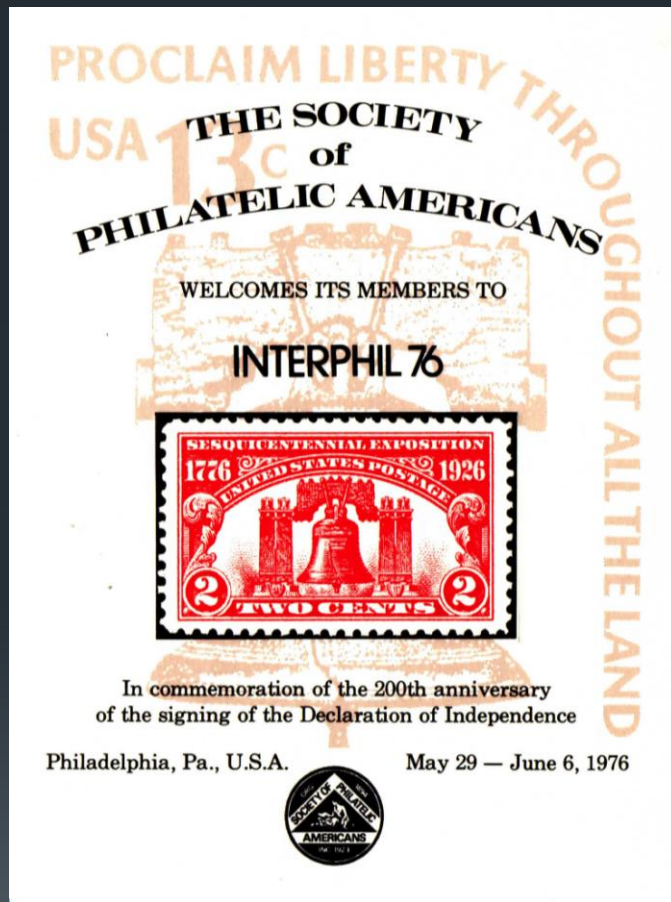


Pages for 35 countries

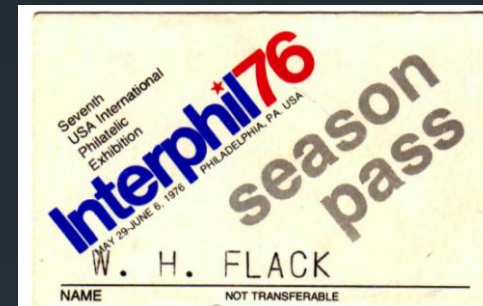


(Above image from Trenchard)

Sundry Interphil76 souvenirs

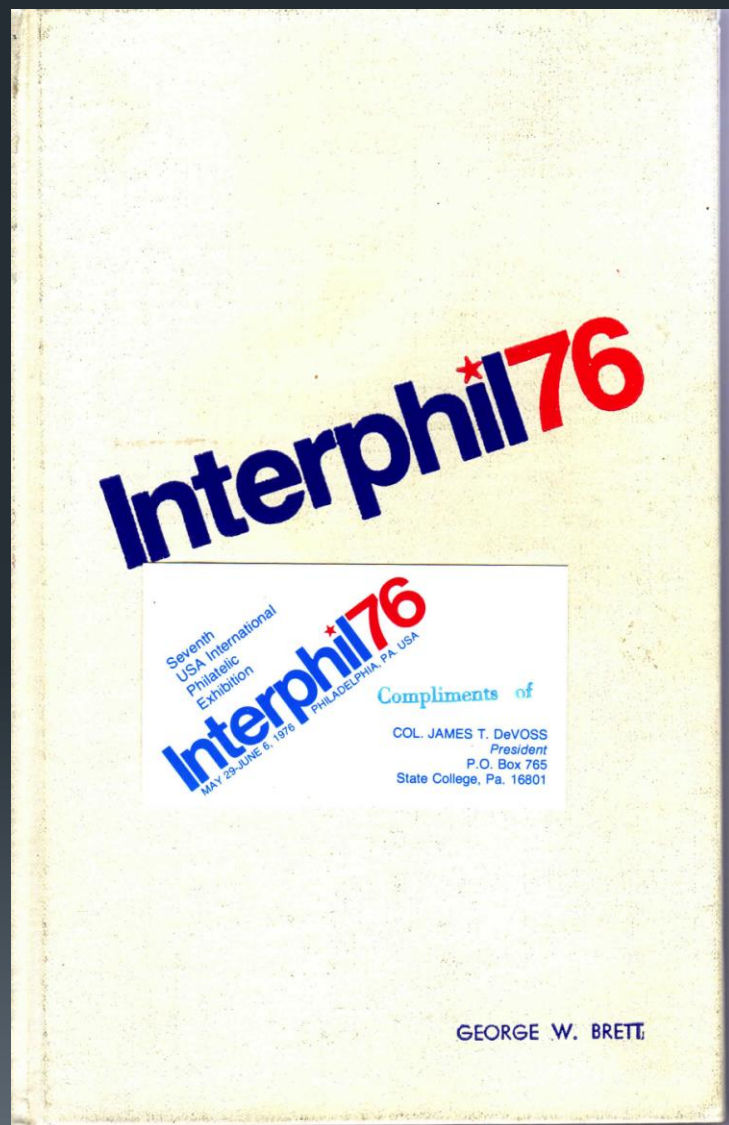


A society souvenir card



A season pass for Interphil76.
On the reverse is serial# 2298
And a rubber stamp impression
of the Guernsey Post Office at
Interphil76

Interphil76 Post-show Report ¹¹⁷



Bound into this hardcover book (about 1.75 inches thick) are the original show catalog and other documents of the Int'l including maps, foreign language show guides (French, German, & Spanish), and much more. It ends with a sizable photo gallery of events, images taken during the show such as the awards ceremony, group jury photo, candid (impromptu groups, etc.) , First Day Ceremonies, exhibit frames, long lines, and many others.

Following the show, these volumes were compiled for the officers and board members of **Interphil76** along with and other show leaders. This one was prepared for George Brete who was listed in the catalog as a Regional Representative.

Tucked inside was the business card of Jim DeVoss, president of **Interphil76** and president of the American Philatelic Society.

Sunday NY Times Column

118

1976, SUNDAY, MAY 2, 1976

STAMPS

SAMUEL A. TOWER

Interphil 76 Is Almost Here

Interphil 76, an international philatelic exhibition taking place when the host country is celebrating one of the most momentous events of its history, the 200th anniversary of its independence, is now only one month away.

Heralded as the greatest stamp show ever presented in the United States, it is taking place in Philadelphia, where in 1776 the new American nation was born. The show will run for nine days, from Saturday, May 29 through Sunday, June 6.

An international philatelic exhibition is held in the U. S. once every 10 years, always in a year that ends with a six. It is superspecial and wherever it is held, in the U. S. or elsewhere, it has the dimensions and grandeur that make it the biggest stamp show in the world.

Interphil is being presented in the Exhibition Halls of the Philadelphia Civic Center, a site the size of a few football fields. There are approximately 180,000 square feet of space for exhibits, as well as conference halls, film screening rooms and restaurants. The Exhibition Halls are air-conditioned, 24 hours a day and artificially lighted, to eliminate any hazards from sunlight or changes in temperature to the precious stamps that will be on display.

The international exhibition, the seventh held in this country, will feature some 3,300 frames measuring 3 by 4 feet, each accommodating 16 album pages in the 9-by-11½-inch size. The frames will be on display in categories of a Court of Honor, Honor Class and competitive classes. The exhibits are certain to be of the kind seen once in a decade. Just to enter the competition an exhibit had to have won a gold award.

An International Pavilion will display the official government exhibits, including those of a number of U. S. agencies, and provide sales space for the U. S. Postal Service and the 35 foreign countries and postal administrations participating with displays. Belgium, for example, is taking part in Interphil with a selection of essays and proofs of Belgian stamps relating to the U. S., the United Nations and Belgium.

There will be 120 dealer booths, with representation from the foremost dealers of the U. S. and abroad. For example, the noted firm of Stanley Gibbons, Ltd. of London which proclaims itself the world's oldest and largest, will bring to Philadelphia a unique unused block of eight of France's 1-franc vermillions of 1849, worth \$275,000; a fine used block of four of Nova Scotia's 6-pence yellow green of 1851, valued at \$15,000; plus Europe's two rarest stamps, Hungary's 1 krajcar and 2 krajcar newspaper tax stamps of 1868.

There is no question about the dealers going all out in the wares they put forward, for they are expending between \$4,000 and \$15,000 each for expenses for the show. There is certain to be a number of the rarest of rarities. There will be super auctions where the minimum lot value will run \$100 and up. One firm is reported to be bringing more Zepplin covers than have ever been seen before among the 250,000 U. S. first-day covers it is bringing to the exhibition.

There will be 65 lectures during the course of the exhibition, all free. Visitors will be able to enter the lecture rooms without paying admission to the exhibition, according to an Interphil statement. The lectures, all by experts in their field, will run through the gamut of philatelic interests, as indicated by the following sampling of subjects.

"A Short History of the American Revolution As Shown by U. S. First-Day Covers," "1968 Christmas Huck Press Plating," "History of Israel—Airmail Covers," "Russia No. 1," "Postal History of the Confederacy, 1860-1865," "U. S. Freaks and Errors," "Forgeries of Japanese Stamps," "How to Tell Genuine from Fake Civil Stamps," "Faroe Island Philately," "Greek Art in World of Jerusalem, 1850-1968," "Philately," "Canal Zone Gems from the DeVoss Collection," "The Postal History of Jerusalem, 1850-1968," "U. S. Booklet Panes," "Provincial Issues of Canada," "Postal History of the Commune Revolution in Paris 1871," "Stamps of the Steamship Companies," "U. S. Possessions and Dependencies," "The Anatomy of Essays and Proofs," "How to Protect Yourself from Purchasing Deceived Stamps," "The Satorat Three Line Overprint," "Forgeries of the Northwest Airlines," "Civil War: Division of States," and "Concentration Camps and Ghettos of World War I."

Awards in the various competitive categories of exhibits will be determined by an international jury of 30 distinguished philatelists. The Grand Prize of Honor will be Excalibur, a miniature sterling silver sword thrust into a block of cut crystal that can be withdrawn for use as a letter opener. The Grand Prize National will be a silver punch bowl set. The Grand Prize International (Western Hemisphere) will be a sterling silver key, an exact reproduction of the key used to unlock the main door of Independence Hall, with all imperfections of the original recreated. The Grand Prize International (Rest of the World) will be a silver inkstand, including quill stand, sand shaker and inkwell, exactly the size of the one in Independence Hall.

There will be a number of special events during the nine days of the show, beginning with an opening night champagne reception in the setting of the "Great Stair Hall" of the Philadelphia Museum of Art. This will include a private viewing of the largest exhibition in the museum's history, entitled "Philadelphia: Three Hundred Years of American Art."

Among the Philadelphia artists represented are Benjamin West, the Teale family, Thomas Sully, Thomas Eakins, Henry Tanner, Mary Cassatt and Andrew Wyeth, many of whom have been represented on U. S. commemoratives.

The exhibition will be open from 11 A. M. to 8 P. M. every day, except the first day, May 29, when it will open at noon, and Sundays, when the hours are noon to 6 P. M. Daily admission is \$2 for adults, \$1 for those under 18.

There are excellent public transportation facilities from the center of Philadelphia to the exhibition area, and the city itself is readily accessible by every means of travel. The Interphil directorate reports that hotel space in the central area of the city is, getting scarce.

First Days

The first days of issue in May announced at this time by the U. S., the United Nations and Canada are:

U. S.—29: Four souvenir sheets being issued at Interphil, at varying prices and requiring large envelopes. Bicentennial Souvenir Sheets, Philadelphia, Pa. 19104.

U. N.—28: Habitat set of commemoratives. For information U. N. Postal Service, Box 5900, Grand Central Station, New York, N. Y. 10017.

Canada—12: Habitat commemorative. For information Philatelic Service, Canada Post Office, Ottawa, Ontario K1A 0B5, Canada.

Plate Numbers

An overwhelming sentiment for plate block numbers, whatever the multiples, rather than no plate block numbers is reported by the U. S. Postal Service on the basis of several hundred letters from collectors. The agency solicited the views of collectors because new presses at the Bureau of Engraving and Printing would change the existing system and provided alternatives of many more or none.

In days of old, large city and local newspapers carried philatelic columns and classified advertisements of great proportion. This Sunday NYT copy of 2 May 1976 addresses Interphil 76 that is swiftly approaching.

Acknowledgements

Steven J. Rod: (2015-16) *American Stamp Dealer & Collector* (10 Installments)

Herb Trenchard: (2006) *Philatelic Literature Review*, 2nd Quarter; *Catalog of the Washington 2006 World Philatelic Exhibition*, and *Washington 2006 Catalog*

Marjorie Sente: (2005-6) *American Philatelist* (9 Issues)

John Hotchner: U.S. Stamps Issued for Previous Decennial Internationals, *Catalog of the Washington 2006 World Philatelic Exhibition*.

Decennial IPEX Catalogues when available

Acknowledgments continued

120

- Herb Trenchard, “International Philatelic Exhibitions” in 1966 SIPEX Catalogue
- Diane DeBlois and Robert Dalton Harris (2011) Postal and Philatelic Ephemera. Week-long course at the Summer Seminar of the American Philatelic Association, Bellefonte, PA
- Many thanks to fellow club members of the Philatelic Society of Lancaster County for passing on items of interest or pointing me in the direction of others.
- With special tanks to Steven J. Rod for passing on many of his personal items and literature issues related to the eleven (11) IPEXs including pages from his exhibit at the NY-WSS ‘16 Court of Honor entitled “Every Ten Years for the Past 100.”

2026 Boston World Expo

121

23-30 May 2026



BOSTON 2026 WORLD EXPO

The Twelfth International Philatelic Exhibition of the United States

Any Questions? Now? ...or Later? Feel free to contact me.
Paul Petersen, pcpetersen@comcast.net, 1.717.299.5640
Club Website: [lcps-stamps .org](http://lcps-stamps.org)

A Most Unusual SIPEX Item

122



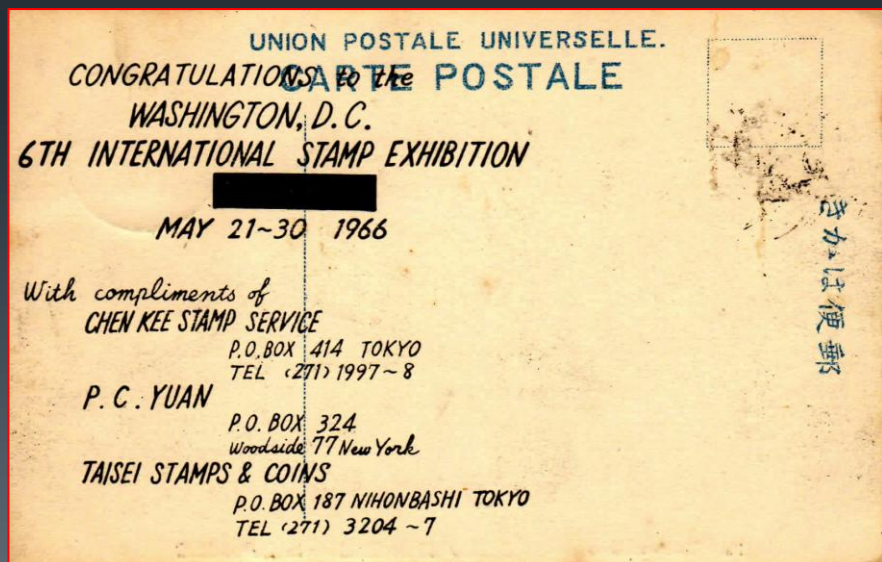
Japanese Date of 5-7-11 is not 5 July 1911 or May 7th, 1911.

It is based on the Era of the Emperor. Which Emperor?

-Determine date of stamp (1915)
1915 was in the Taisho Era which started 30 July 1912 and ended in 1926. Emperor died on 30 July.

-This was the 11th Year of Taisho making it 1922. Ergo...May 7th 1922 in this case.

Could also be use of an old stamp in the newer Showa era which started in 1926. Add 11 years, making this 1936. Your call.



Note that under black censor tape is New York.

Today's Plan

- While today's goal is to explore the ephemera of the U.S. Internationals, there is also interesting background history of these shows to share, and some of this is abstracted.
- Start with a short review of the start of the U.S. IPEX.
- Continue with a brief overview of 'ephemera' in general and how it fits into both postal and philatelic items.
- Move on to a quick spree of the eleven IPEXs with one page for each expo.
- Follow-up with Part-II, the details of the 1956 (FIPEX), 1966 (SIPEX), and 1976 (Interphil76)
- Questions and Comments

FIP's Forbidden Issues

124



Special Edition
for
SIPEX 1966

List of Issues which are Forbidden at Exhibitions
held under F.I.P. rules

Liste der Ausgaben, deren Ausstellung laut
F.I.P. - Reglement verboten ist.

Liste des Emissions dont la Presentation est Interdite
dans les Expositions F.I.P.



Corrected to Jan. 15, 1966

USPS Activities at Interphil76

125

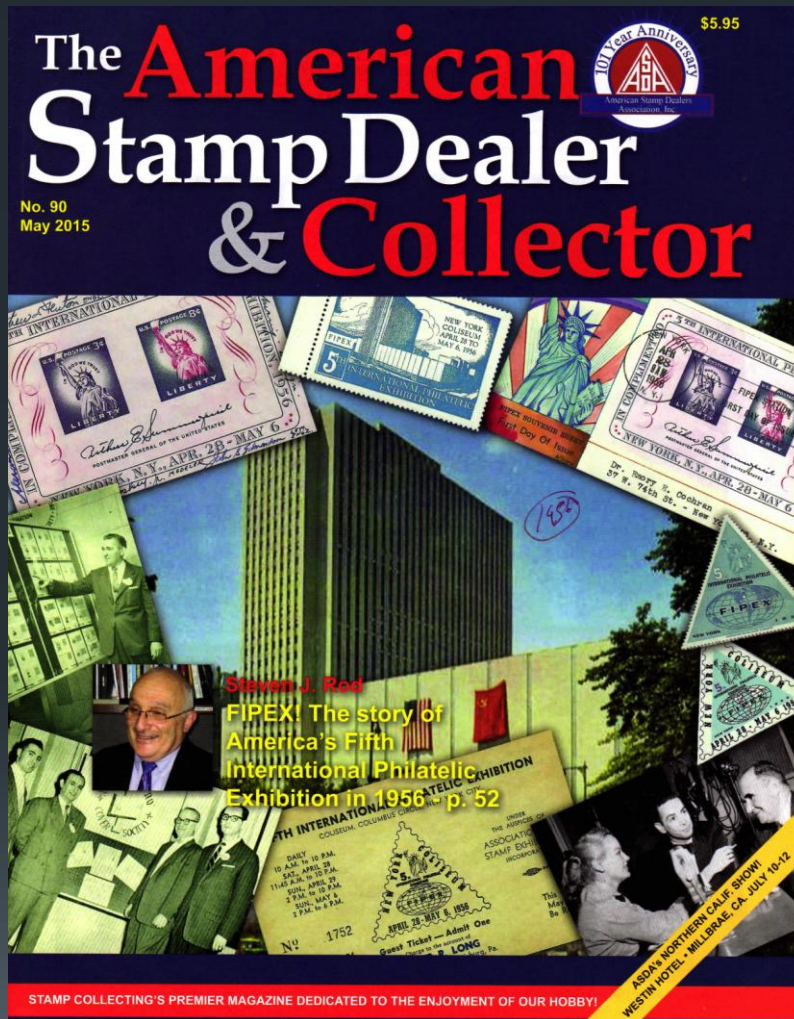


5. **Interphil76**

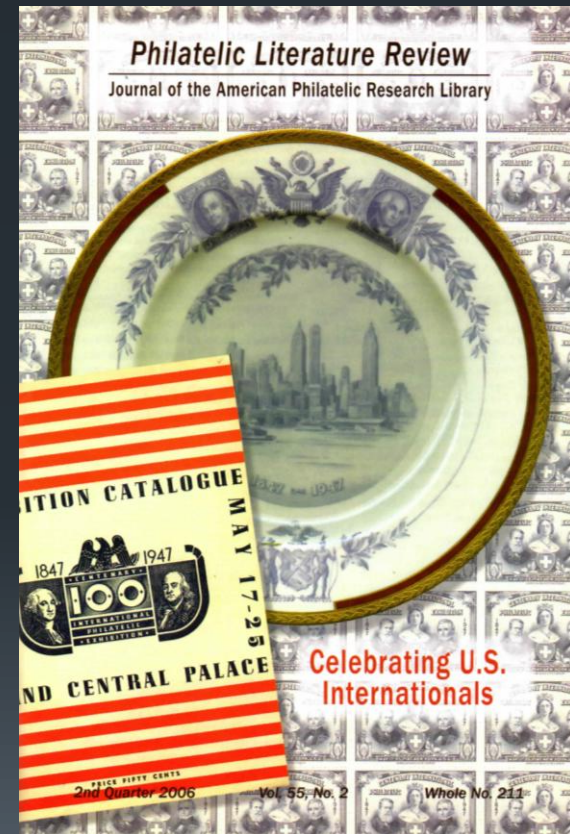
White & Yellow — Interhill 76
Pink — Commissioner
Gold — Exhibitor

Reference Sources

127



#5 of Steven J. Rod's 10 part series



Herb Trenchard's article, 1913-1996