

THE CARD – Vol. 32, No. 11 Issue 368, November 2021

A Publication of the Lancaster County Postcard Club, Lancaster, PA

Enjoying postcards through education and entertainment.

Next Meeting: November 15, 2021 Farm & Home Center. Buy, Sell & Trade from 5:00. Meeting – 7 PM

Like us on Facebook – www.facebook.com/LCPClub.

<http://www.lcpc-stamps.org/newsletter-archive/theh-card/>

OCTOBER MEETING

President Mark Arbogast opened the meeting with the Pledge of Allegiance. There were 34 members in attendance. The secretary's minutes were approved as read, and the treasurer's report showed a balance of \$5,200.00.

There were no committee reports.

Dave Trussell brought early 1900 pictures of Lancaster and asked for help in identifying the locations.

Fifteen dollars in the 50-50 drawing was won by Bob Campbell

Maria Schurz and Mark Jardel won the door prizes - \$2 vouchers.

There were sign-up sheets in the back of the room for suggestions for programs and subjects for postcard competitions. The December meeting will be held at the Park City Diner, pending availability. The club will cover the cost.

The evening ended with Mike Sigman's program "Rawlingsville Camp Meeting: A Postcard Record of the Camp Meeting's History and Ministry in the Southern End of Lancaster County (but by no means an exhaustive record).

President Arbogast adjourned the meeting.

Respectively submitted,
Betty Beck, Secretary

Officers & Board Members →



PRESIDENT'S COLUMN

Last month the Club officers and directors met and worked on officer and director openings for 2022. Susan Glass has agreed to be President and we even have a person for Vice President - Jean Schopf. We could use more people for the Board of Directors, please consider volunteering for that.

Also if you have a program you could do about postcards or a favorite collecting topic, we'd love it have you do it. Let me or Susan Glass know about either of these items.

Mark



NOVEMBER PROGRAM

The program for the evening - "1915 Lancaster County RPPC Set" will be presented by LCPC member Brian Frankhouser. See page 2 for more information about this program.

OCTOBER POSTCARD COMPETITION

The competition for this month was "Horse-drawn Vehicles" and next month the topic will be "Lancaster County."

First: Bob Campbell "Delivery of Car"

Second: Maria Schurz "Victorian Transit Tour of Cape May, NJ"

Third: Bob Kramer "Sleigh in the Snow"

Honorable Mention: Brian Frankhouser "Wright's Bakery in New Holland"; Gordon Smith "Parade Entry"; Gisela Withers "Off to Beaver County"; Dick Pendergrast "A Holiday Ride"; Jeanne Schopf "Coaching Party - Yellowstone National Park"; Annetta Buettner "Rim of the World Drive, California"; Ranata Sachse "Amish Country"; Sue Sweeney "Transportation Progression (carriage in background)"; Donna Bashaw "Charlestown, South Carolina"

2021 POSTCARD COMPETITION SUBJECTS

November – Lancaster County

FUTURE SHOWS

November 19-20 – York International Postcard Expo, York Fairgrounds, York, PA, Fri. 9 AM – 7, Sat. 9 AM-5 PM, Adm. \$5.00

November 28-27 – Lancaster Fall Postcard Show, Farm & Home Center, Lancaster, PA, Fri. 10 AM – 5 PM, Sat. 10 AM – 3 PM, Admission \$2.50

POSTCARD & MASKS



"When I originally looked at this card, I dismissed it as too foxed. However, when I looked at it again a couple of days later, I realized that the troops / guard are wearing masks.

The barracks were near Seoul and were built early in Japan's occupation. The masks would appear to indicate that the card dates back to the 1918 pandemic."

Mary Long

1915 LANCASTER COUNTY REAL PHOTO SET

By Brian Frankhouser

The November program is a follow-up to the February 2018 presentation of the 1914 RPPC Lancaster County set that was published by Ed Herbener from Newark, DE. The two sets will be compared and contrasted with regards to rarity, how the different photographers traveled through the local area, labeling of the postcards, and reverse descriptions.

Note that the photographer of the 1914 set was easy to identify because his name was on most of the postcards he published. However, the 1915 set does not show a photographer or publisher. The only clue is the penmanship used to label the location on the front of the postcard. Many Lancaster County photographers were excluded based on this clue. However, Berks County native, H. Winslow Fegley, could not be excluded. An explanation and illustration showing why he may be the photographer and publisher of this set will be provided along with a brief biographical summary.

Over 60 postcards from more than 20 towns and hamlets in Lancaster County will be shown. Regrettably, the presenter has not visited every location, so audience participation is highly encouraged if you are able to provide information about your corner of the county when it's on display.



Photo #1:

Although there are no known early Blue Ball views on published lithographed postcards, there is quite a selection of RPPC's. Geist's store was located on the town square, across from the hotel. There is now an Italian restaurant on this site.



Photo #2:

The Brownstown National Bank was founded in 1908 and was located on Main Street. It was absorbed by Meridian Bank in 1981.

Photo #3:

The Hopeland United Brethren Church structure was fairly new when this photo was taken in 1915. It replaced the Paradise U. B. Church that was destroyed by lightning in 1910.

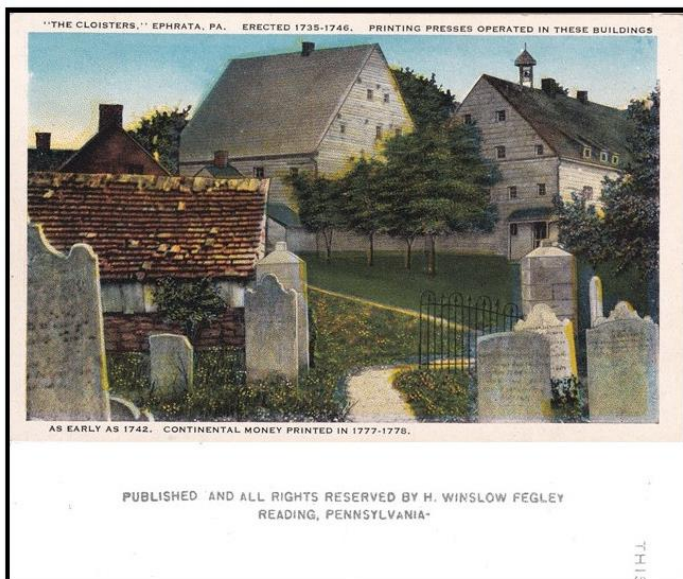


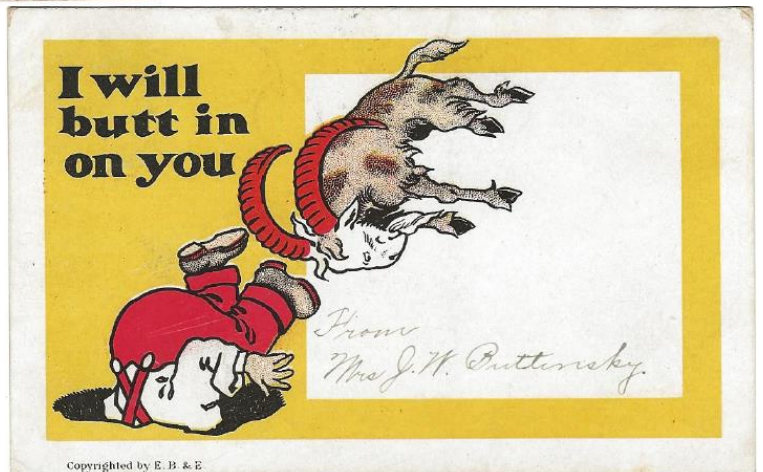
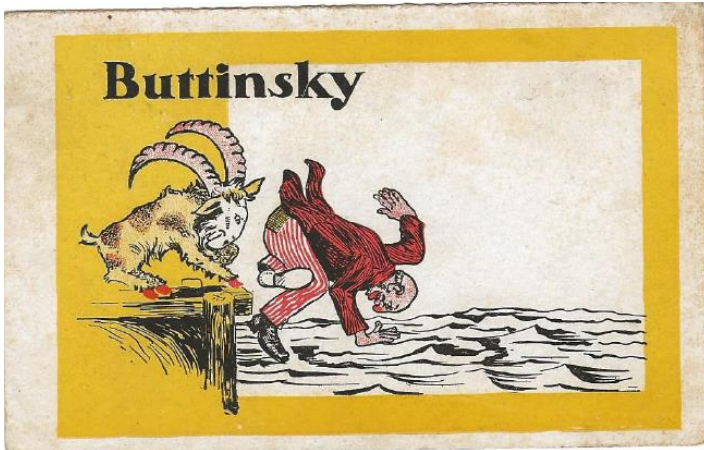
Photo #4:

Shown is a view of the Ephrata Cloisters, and below it, an enlarged view of a portion of the reverse. This is card A-33 of the "historical series" published by photographer, H. Winslow Fegley. This postcard provides evidence that Fegley's interests stretched beyond the borders of Berks County.

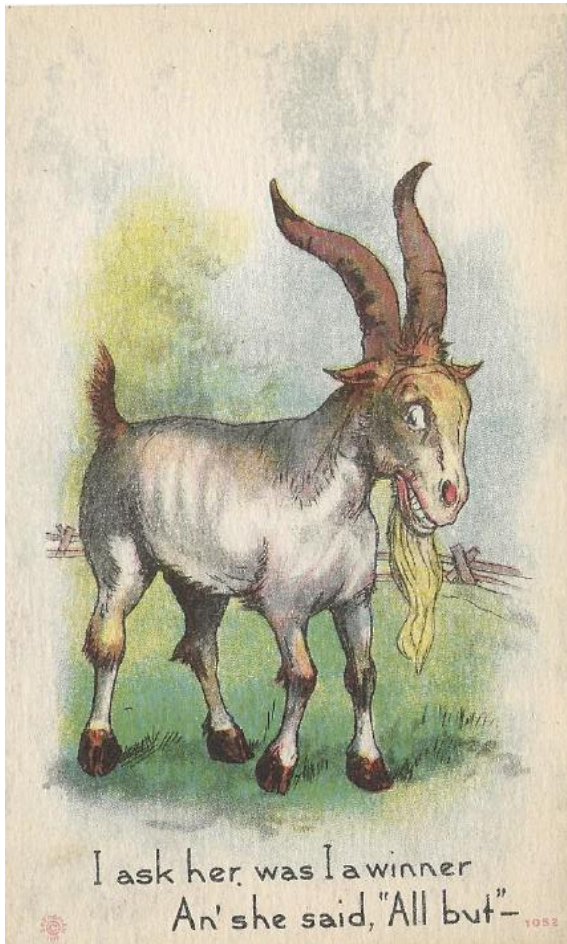
TAKE GOATS SERIOUSLY

By Jim Ward

Goats are among the earliest domesticated animals. They provided food and milk. Their hides were used to make bota bags lined with a goat's bladder. Their irises are usually pale, so the contrasting, slit-shaped pupils are more noticeable than in other animals.



Instead of grazing like cattle & sheep, goats browse. They will chew on and taste nearly everything; for example: cardboard, clothing and paper, including tin can labels. They seldom consume soiled food or contaminated water.



Goats are agile and well known for rock climbing. In addition, they are “eating machines” and will clear unwanted vegetation in no time. If left untethered, they will revert to “feral” even more swiftly than cats.

When a goat has died, its intestines or “catgut” has many uses: for example, it can be used for surgical sutures and strings for musical instruments. Angora goats produce mohair and are shorn twice a year, yielding about 10 pounds.



OCTOBER COMPETITION WINNERS



1st Place – Bob Campbell



2nd Place – Maria Schurz



3rd Place – Bob Kramer

LANCASTER FALL POST CARD - SHOW -

FRIDAY, NOVEMBER 26, 2021
10:00 AM – 5:00 PM

SATURDAY, NOVEMBER 27, 2021
10:00 AM – 3:00 PM

FARM & HOME CENTER
1383 Arcadia Road, Lancaster, PA 17601
(Off Manheim Pike, Rte. 72)

For More information call:
Dede Schaeffer (717) 392-3955

Admission:
\$2.50