

THE SCARCE D.M. BENNETT PRIVATE DIE PROPRIETARY U.S. REVENUE STAMP RS30E ON EXPERIMENTAL SILK PAPER



A Brief History & Examination of Paper

by Charles J. DiComo, PhD | charlesdicomo@gmail.com

November 2021

D.M. BENNETT, CINCINNATI, OHIO

- D.M. (DeRobigne Mortimer) Bennett was a Cincinnati druggist who produced a number of proprietary nostrums, e.g. Dr. Bennett's Family Medicines.
- Private die revenue stamps (#RS30) were issued for his firm from February, 1865 through August 17, 1871: 329,700 printed on old paper.



Civil War Token

A handwritten invoice on aged paper with a decorative border. The text reads: "Totalskala Zickling Co. Cincinnati 9 1866 Received, on Commission, of D. M. BENNETT, the following Medicines, which I agree to pay for, at the annexed prices for all sold, and to return the remainder in good order when called for:". Below this is a table with columns for "Doz.", "Medicine Name", "Price", "Dollars.", and "Cents.".

Doz.	Medicine Name	Price	Dollars.	Cents.
1/2	Bennett's Quick Cure	\$4 00	2	00
1/2	Liniment	2 25	1	12
1	Worm Lozenges	2 00	2	00
1	Cough do.	2 25	4	00
1/4	Root and Plant Pills	1 75		
1/4	Salve and Plaster	1 75		
1/4	Stomach Bitters	1 75		
1/2	Ague Pills	4 00		
1/2	Sure Death to Rats	2 00		
1/2	Mad. Goldsmith's Sigarettes	2 00		

D.M. Bennett Invoice, dated June 9, 1866



Civil War Token

- Rarely, some were printed on Experimental Silk paper, who characteristics are:
 - The paper is thicker than old paper;
 - The paper is whiter and more fibrous than old paper;
 - The printed image appears bolder than on old paper; and
 - Minute pieces of blue or red silk thread will be found widely scattered and embedded in the paper, sometimes only one fiber.

THE 1¢ LAKE ON EXPERIMENTAL SILK PAPER

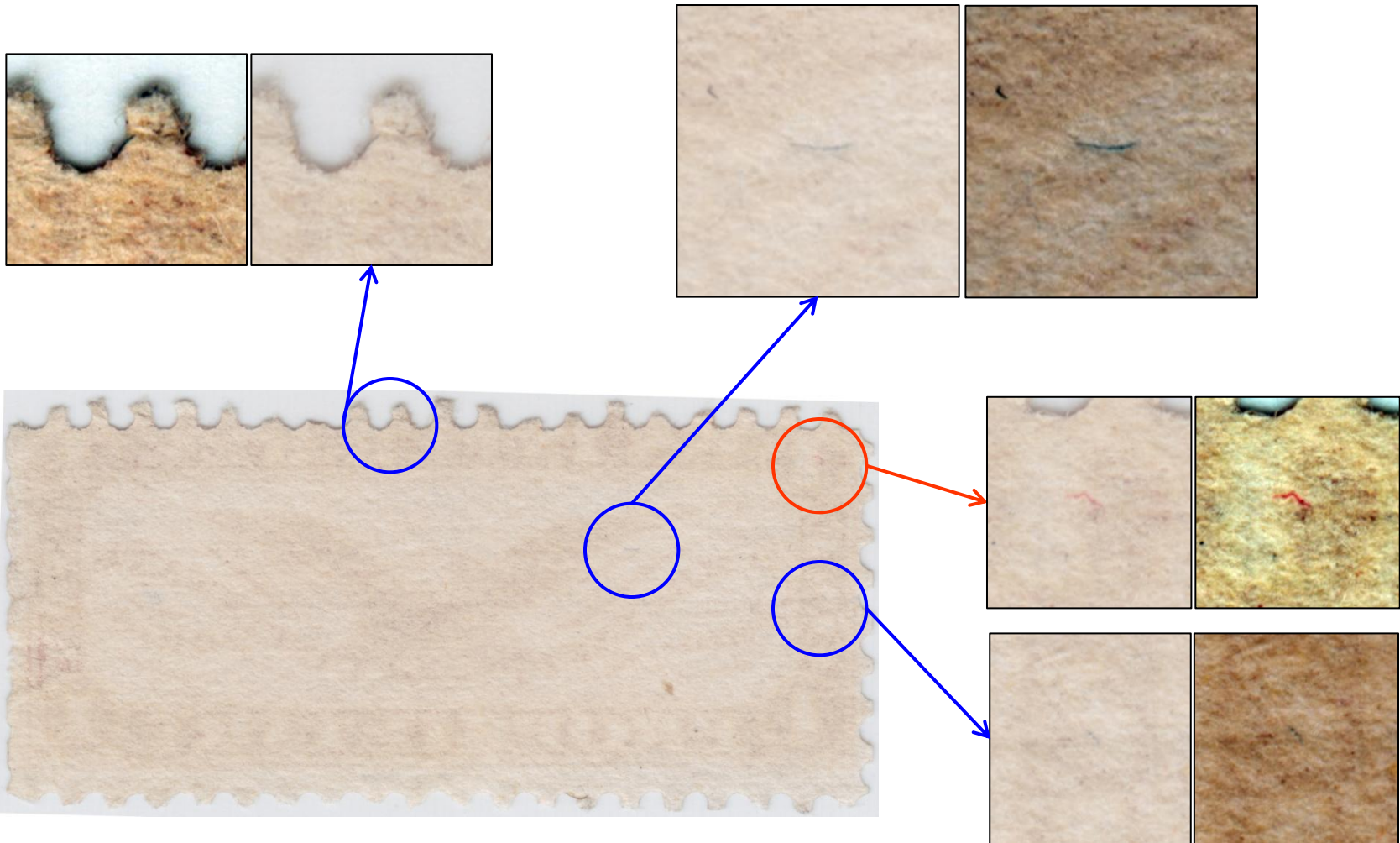


1¢ lake, central image of an Eagle with widely extended wings, upon a shield, its talons grasping three arrows. At left and right in curved colored lines, D.M. BENNETT OHIO. and CINCINNATI, OHIO. Straight marginal labels of color at all sides, inscribed U.S. INTER. REV., ONE CENT and PROPRIETARY. Circular disk of solid color in the corners with colorless numeral of value “1”.



Design 32.5 x 14 mm, engraved and printed in 216 stamps per sheet by Butler & Carpenter, Philadelphia, PA.

ANALYSIS: EMBEDDED BLUE AND RED SILK FIBERS



NOTE: To highlight the embedded short blue and red silk fibers, the cropped images had “Color Levels” adjusted in Photoshop.

Comparison: Experimental Silk Paper vs. Old Paper



RS30e (left) on experimental silk paper backlit against an RS30a (right) on old paper.

Experimental Silk Paper characteristics:

- (a) Thicker paper than old paper;
- (b) Printed image appears bolder than on old paper;
- (c) Whiter and more fibrous than old paper;
- (d) Contains a number of short, embedded blue and red silk fibers (sometimes only 1).

Conclusion: The presence of three embedded blue silk fibers and one embedded red silk fiber easily visible under 10X, along with the whiter, thicker and more fibrous paper than old paper, this stamp is the scarce RS30e experimental silk variety.