

# Christmas Seal Collecting

**Stanley E. Jones**  
**BVSC**

**The Philatelic Society of Lancaster County**  
**November 24, 2021**

# PRESENTATION OVERVIEW

- Danish and Swedish Seals
- Red Cross Seals 1907-1919
- Louisiana Tuberculosis Hospital (A Local Charity)
- Grace Lutheran Sanatorium, San Antonio, TX
- Lutheran Sanatorium, Wheat Ridge, CO

# Danish Christmas Seals

## Red Cross Christmas Seals

Christmas seals have been used and collected for almost a century. They have been used along with postage stamps and, in some cases, they were even accepted for postage, although this was illegal. Their collateral value to stamp collectors is what justifies this exhibit here.

Christmas seals originated in Denmark in 1904 (the first Danish seal is shown below). They were first introduced in this country by Emily P. Bissel in 1907. The limited circulation of these seals is responsible for the great rarity of legitimately used examples. Legitimate usage was almost exclusively limited to the Delaware and Eastern Pennsylvania areas. Only \$3000 was raised from the sale of 1907 seals to fight tuberculosis. However, this modest success was quickly followed by a national campaign in 1908. The use of multiple printers and processes in 1908 has lead to a number of interesting and scarce varieties. 1908 is regarded as a collecting interest in itself.



Denmark no. 1  
The First Christmas Seal

There are several very scarce items in this exhibit. The 1907 types 1 and 2 tied to greeting cards here are very difficult to find. The 1907 type 2 tied to a New Year's card is possibly the finest example ever discovered. The copy of 1911 type 4 on a Christmas card is arguably the scarcest of all Christmas seal varieties. Only about 30-40 copies are known to exist. The copy of 1913 type 1 is extremely rare. It is believed that not more than one sheet of 100 of these ever existed.

This exhibit is restricted to Red Cross seals issued between 1907 and 1919. The collection is very representative of the period, but hardly complete. The 1919 stop date was chosen because it is the last year that the Red Cross appeared on a seal. 1919 was also the first year that the double barred Cross of Lorraine, symbol of the American Lung Association, appeared on a seal. After that, only the double barred Cross of Lorraine will be found on Christmas seals.



# Danish Christmas Seals - 2





# Early Swedish Christmas Seals



# The First U.S. Christmas Seal

## 1907



# The Second US Christmas Seal

## 1907

1907 Christmas Seals



1907, Type 2  
WX 2

1907 type 2 Christmas seal tied to a New Years card.  
Very rare usage. This is the key to any tied seal  
collection. Only a few are known to exist.



# 1907 Related Items

## Related 1907 Items



Encouraged by the success of the 1907 Christmas Seals, Emily P. Bissell designed another seal for year round use in the Delaware Valley (above). This seal was released in 1908, but was not very succesful and only a few copies have survived.

As with any scarce collectible, frauds will appear in the market place. The 1907 seal "tied" to the cover below is a well known fraud.





# 1907 Christmas Seals



# The Lehmann Cover

## The Rarest 1907 Ever Discovered



# A Modern Lehmann Cover



# 1908 Type 1 Christmas Seals

1908 Christmas Seals



Type 1A  
perf 14, WX3



Type 1A  
perf 12, WX 3a



Type 1B  
Unlisted in the Scott Catalog



Type 1A, perf 12

# 1908 Type 2 Christmas Seals

1908 Christmas Seals



Type 2

perf 12, WX4



Type 2, perf 12



# Extremely Rare 1908 Christmas Seal Varieties used on Cards



# 1909 Christmas Seals

1909 Christmas Seals



WX 5



WX 5a  
New Hampshire Local



WX 5

1909 Christmas Seal illegally used as postage.



# 1910 Christmas Seals

1910 Christmas Seals



Scott no. WX 6



1910 Seal tied to a card with rare received stamp



# 1910 Christmas Seals on Cards



1910 Christmas Seals tied to cards



# 1911 Christmas Seals

## 1911 Christmas Seals



Type 1  
Scott no. WX 7



Type 2  
Scott no. WX 8



Type 3  
Scott no. WX 9



Type 1



# 1911 Christmas Seal Type 3 Coil Pair



# 1911 Type 4 Christmas Seal

1911 Type 4



The 1911 Type 4 Christmas Seal is unlisted by Scott. It was privately prepared in California and is arguably the rarest of all Christmas Seal varieties with only 30-40 copies known to exist.

# 1911 Type 5 Christmas Seal



## The Seal News

*Quarterly Journal of the Christmas Seal & Charity Stamp Society*

# 1911 Christmas Seals on Cards



1911 Type 1 Christmas Seals tied to cards.



# 1912 Christmas Seals

1912 Christmas Seals



1912 Christmas Seal with Bethlehem, PA cancel



Scott No. WX 10

Christmas card with two 1912 seals





# 1912 Christmas Seals on Cards



1912 Christmas Seals tied to cards



# 1913 Christmas Seals-1

## 1913 Christmas Seals



Type 1  
(Scott no. WX 11)



Type 2  
(Scott no. WX 12)



Type 3  
(Scott no. WX 13)



Scott no. WX 14  
No longer listed by Scott, this is a local issued by the  
Chicago Tuberculosis Institute

# 1913 Christmas Seals-2

1913 Christmas Seals



Type 1 Essay



1913 type 2



1913 Type 3

# 1913 Christmas Seals-3



1913 type 1 Essay

A 1913 type 3 seal tied to a christmas card



# 1913 Christmas Seals on Cards

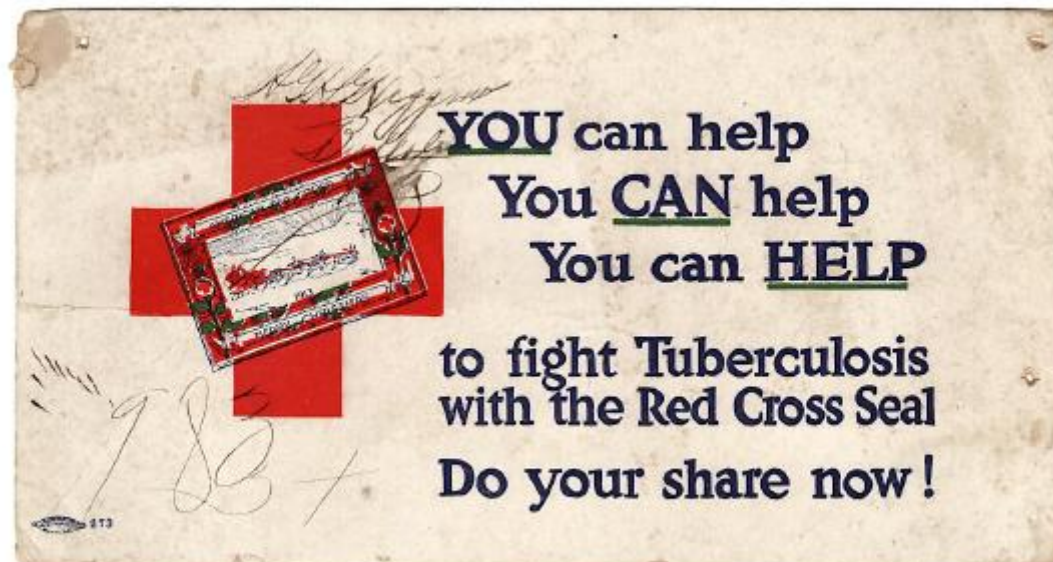


A pair of 1913 type 3 seals tied to christmas cards





# 1913 Christmas Seal Essay on a Blotter



# 1914 Christmas Seals

1914 Christmas Seals



Scott no. WX 15



1914 Essay

Christmas card with 1914 seal tied to it.



# 1914 Christmas Seals on Cards



1914 Christmas Seals tied to cards



# 1915 Christmas Seals

1915 Christmas Seals



WX 16

Both blocks are perf 12 1/2  
The block on the right has a distinctly  
darker shade of red.



Error, Imperforate vertically

# 1915 Christmas Seals on Cards



### 1915 Christmas Seals tied to cards





# 1916 Christmas Seals



# 1916 Christmas Seals on Cards



1916 Christmas Seals tied to greeting cards.

Both are WX 18a, perf 12 X 12 1/2.



# 1917 Christmas Seals-1

1917 Christmas Seals



WX 19  
Perf 12

1917 Christmas Seals tied to a New Year's card.



# 1917 Christmas Seals-2

1917 Christmas Seals



Imperforate Pair

1917 Christmas Seal tied to a card.



# 1918 Christmas Seals-1

1918 Christmas Seals



perf 12  
WX 21d



WX 21d Booklet Pane



# 1918 Christmas Seals-2



# 1918 Christmas Seals-3

1918 Christmas Seals



1918, type 3

Essay, no longer listed in the Scott catalog, it was  
formerly listed as WX 23



Imperforate Pair, Type 1

# A Competing 1918 Charity



# 1919 Christmas Seals-1

## 1919 Christmas Seals

This was the last year that the Red Cross appeared on a Christmas Seal and the first year that the double barred Cross of Lorraine, symbol of the American Tuberculosis Society, appeared on a seal.



Type 1  
WX 24



Type 1



Type 2  
WX 25

## 1919 type 1 seals tied to a card



# 1919 Christmas Seals-2

1919 Christmas Seals



Type 2 Imperforate Pair

1919 type 1 experimental envelope





# 1919 Christmas Seals on Cards

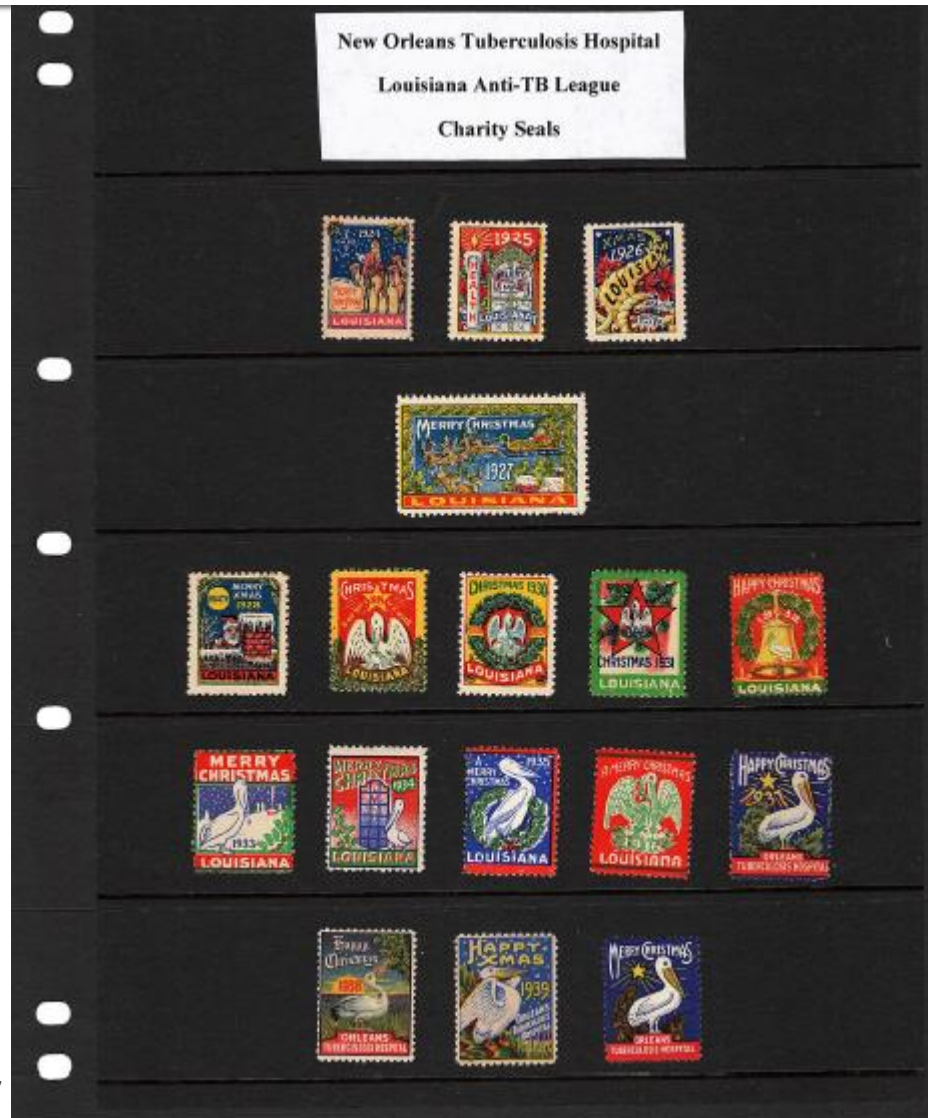


Above: 1919 type 1 seal tied to a Christmas card

Below: 1919 type 2 seal tied to a Christmas card



# New Orleans Tuberculosis Hospital



# A Local Charity

## New Orleans Tuberculosis Hospital on Covers



# A National Charity Lutheran Evangelical Sanitarium Wheat Ridge, CO-1





# A National Charity Lutheran Evangelical Sanitarium Wheat Ridge, CO-2



# A National Charity Grace Lutheran Sanatorium San Antonio, TX-1





# A National Charity Grace Lutheran Sanatorium San Antonio, TX-2



# QUESTIONS?

