

# THE CARD – Vol. 32, No. 9 Issue 366, September 2021

A Publication of the Lancaster County Postcard Club, Lancaster, PA

*Enjoying postcards through education and entertainment.*

Next Meeting: September 20, 2021 – Postcard Show

Like us on Facebook – [www.facebook.com/LCPClub](http://www.facebook.com/LCPClub).

<http://www.lcpc-stamps.org/newsletter-archive/theh-card/>

## AUGUST “MINI” POSTCARD SHOW

The “Mini” Postcard Show was held on Monday, August 16. The staff at F&HC had the tables ready and Jere Greider & some of the dealers had things in place almost before the setup volunteers arrived. Prior to the doors opening at 2 PM there were people waiting to get in. The dealers seemed satisfied, there were customers from outside the local area and they were just happy to be at a show and looking at postcards. Thank you to all who helped and to those who supported our club. Thank you to the dealers who took a chance and setup for this crazy idea for a show.

Dealers:

Jere Greider

Bob Kramer

Leighton Stover

Dede Shaeffer

Delores Rowe

Tom Schraum

Bill Miller

Michael Krafick

Paul Smoker

Dick Julian

Robert Dissinger

Jim Tigner

Aaron Heckler

Gordon Smith

Don Wert

Thank  
You!

Susan

## PRESIDENT’S COLUMN

Our mini postcard show is over and I feel it was a great success. I first want to thank Susan Glass for having the idea and for all her work to make the show a success. I also want to mention the good amount of volunteers that worked at the show and at the club table. My thoughts about the show - we reminded people that postcards are alive and well, dealers enjoyed it after a year and a half or so of no shows, buyers were out looking and buying.

Mark

## SEPTEMBER PROGRAMT

Join us to hear Leighton Stover’s presentation about Pennsylvania Coal Regions: Railroads, Mines & Trolleys.



Reliance Colliery – Mt. Carmel, Pa.

## LCPC 2021 PROGRAMS

October - Mike Sigman - Rawlinsville Camp Meeting

November - Brian Frankhouser - 1915 Lancaster County RPPC Set

## 2021 POSTCARD COMPETITION SUBJECTS

**September** – Large Letter Cards

**October** – Horse Drawn Vehicles

**November** – Lancaster County

## FUTURE SHOWS

**November 6** – Pittsburgh Postcard/Paper Show, Fairhaven Methodist Church, 2415 Saw Mill Blvd, Pittsburgh, 8:30 AM – 3:30 PM, Free Admission

**November 19-20** – York International Postcard Expo, York Fairgrounds, York, PA, Fri. 9 AM – 7, Sat. 9 AM-5 PM, Adm. \$5.00

**November 28-27** – Lancaster Fall Postcard Show, Farm & Home Center, Lancaster, PA, Fri. 10 AM – 5 PM, Sat. 10 AM – 3 PM, Admission \$2.50



# "S" IS FOR SCHOOL ... TEACHERS

By Jim Ward

This September is like no other. Likely pupils will be required to wear masks – or will they? Some parents will ask to have their children repeat last year’s interrupted studies, and will they be allowed? Where will the teacher begin the year’s subject? What part will be repeated?

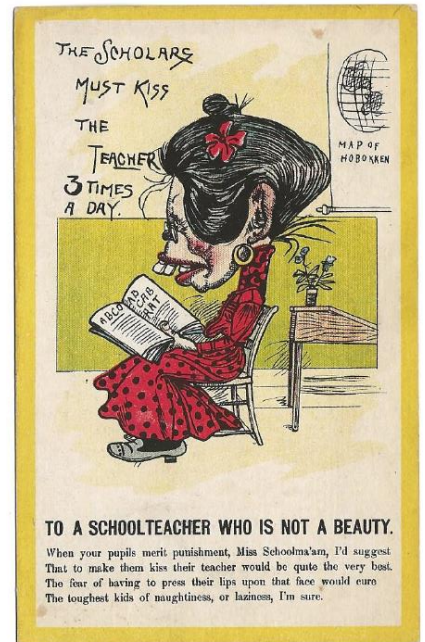
Retired teachers, as a block, will be so glad they’re no longer “in the business.” Their sympathy for today’s teachers is undisputed. Pity the poor teachers!

There was a time, generations before COVID, when teachers didn’t get much respect. Our postcards this issue features those poor souls.

One artist stands at the front of Teacher Ridicule. Charles Howard’s ugly Vinegar Valentine Postcards sometimes show his prominent letter “H”. All of his postcards are sought by a curious band of collectors.



Oh, But do we love our teacher ... Nit!

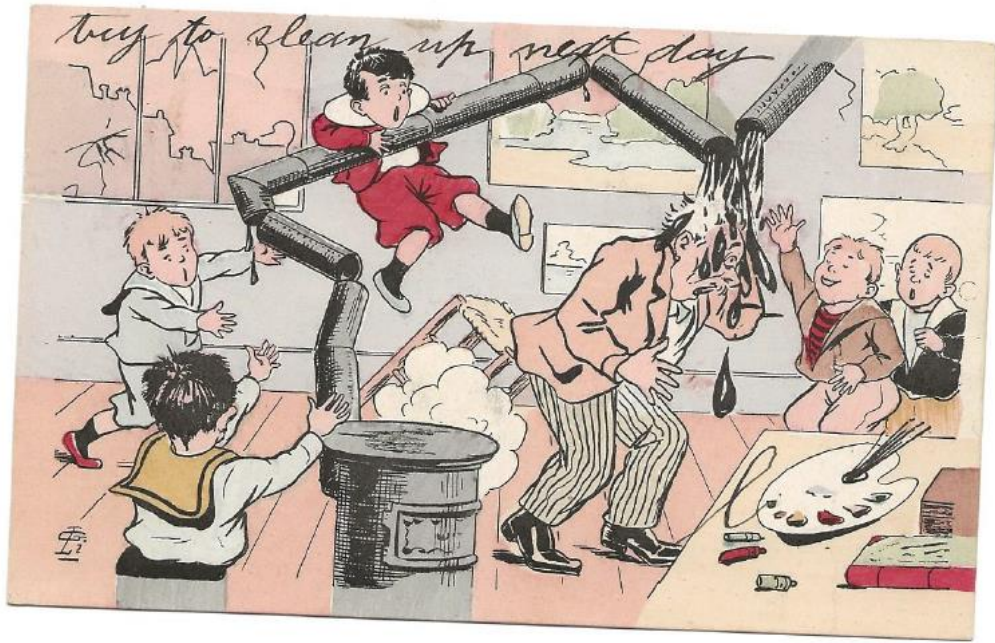


To a Teacher Who is Not a Beauty.

Who tries to pound in education  
On little kids by force?  
And who discovered America?  
The school teacher – of course.



When your pupils merit punishment,  
Miss Schoolma'am, I'd suggest  
That to make them kiss their teacher  
would be quite the very best.  
The fear of having to press their lips  
upon that face would cure  
The toughest kids of naughtiness,  
or laziness, I'm sure.



Try to clean up next day.



## SLATE SIGN STREET SCENES IN TERRE HILL

By Brian Frankhouser

I spent some time pondering what was so good about “the good old days”. It seems to me things are much easier now. For those of us living in urban areas, I finally came up with something that’s more difficult to do now than it was 110 years ago... crossing the street! The same holds true for this article’s subject.

The manufacture of postcards depicting a street scene with a slate location marker in the middle of the street would be nearly impossible with today’s traffic. Simply taking a picture while standing in the roadway is now extremely dangerous (I speak from experience). However, in 1908, when this RPPC set was published, things were different. The sign in the road is not the typical slate board that was one of the most valuable learning tools for most students for over 100 years beginning in the early 19<sup>th</sup> century. It is a larger version (more than four feet wide) and was used on postcards by the same photographer in several Lancaster County towns, including Millersville, Mount Joy, and Terre Hill. The accompanying photographs include only Terre Hill, but others may be shown in a later article.



Photo #1 – “Climes Avenue” was located at the west end of town. View is looking south towards West Main Street. Clime Avenue is now called “Maple Street”.

Photo #2 – “Broad St.” was located at the western part of Terre Hill and is now (also) Route 897. This view is looking south towards West Main Street.



Photo #3 – Looking west on West Main Street towards the Terre Hill hotel on left at the corner of Lancaster Avenue. The old hotel is now an apartment building.



Photo #4 – Looking west on West Main Street towards Lancaster Avenue. The hotel is obscured, but Lancaster Avenue entrance can be seen in the distance on the left.

Photo #5 – Looking east on West Main Street. The church steeple can be seen in the background. The first street on right is Conestoga Street.

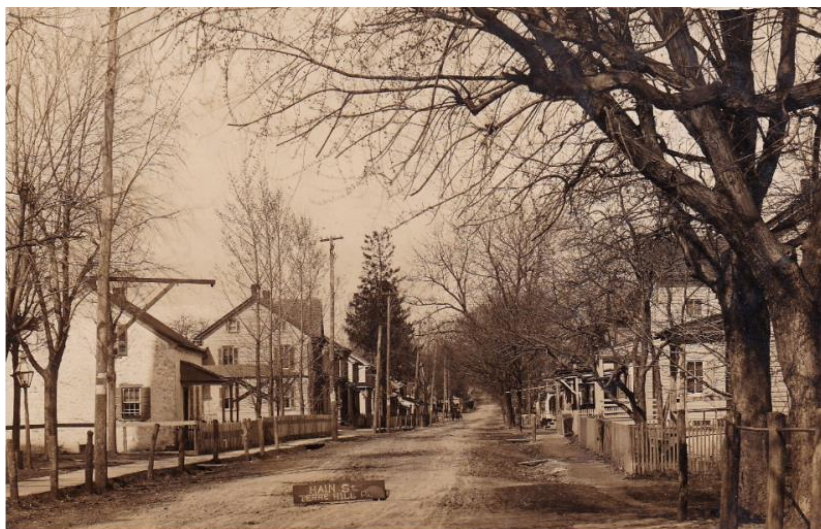


Photo #6 – Looking west on West Main Street from the Fairville Evangelical Church (now called St. Paul's United Methodist). Small bungalow on left (107) still stands.



Photo #7 – From West Main Street looking East towards East Main Street and the Trinity United Evangelical Church (middle of photo).

Photo #8 – From East Main Street looking east. The first building on the left is the Trinity United Evangelical Church.



Photo #9 – Looking west on East Main Street. The building on the left with the mansard roof is now Eckenroth's Funeral Home.