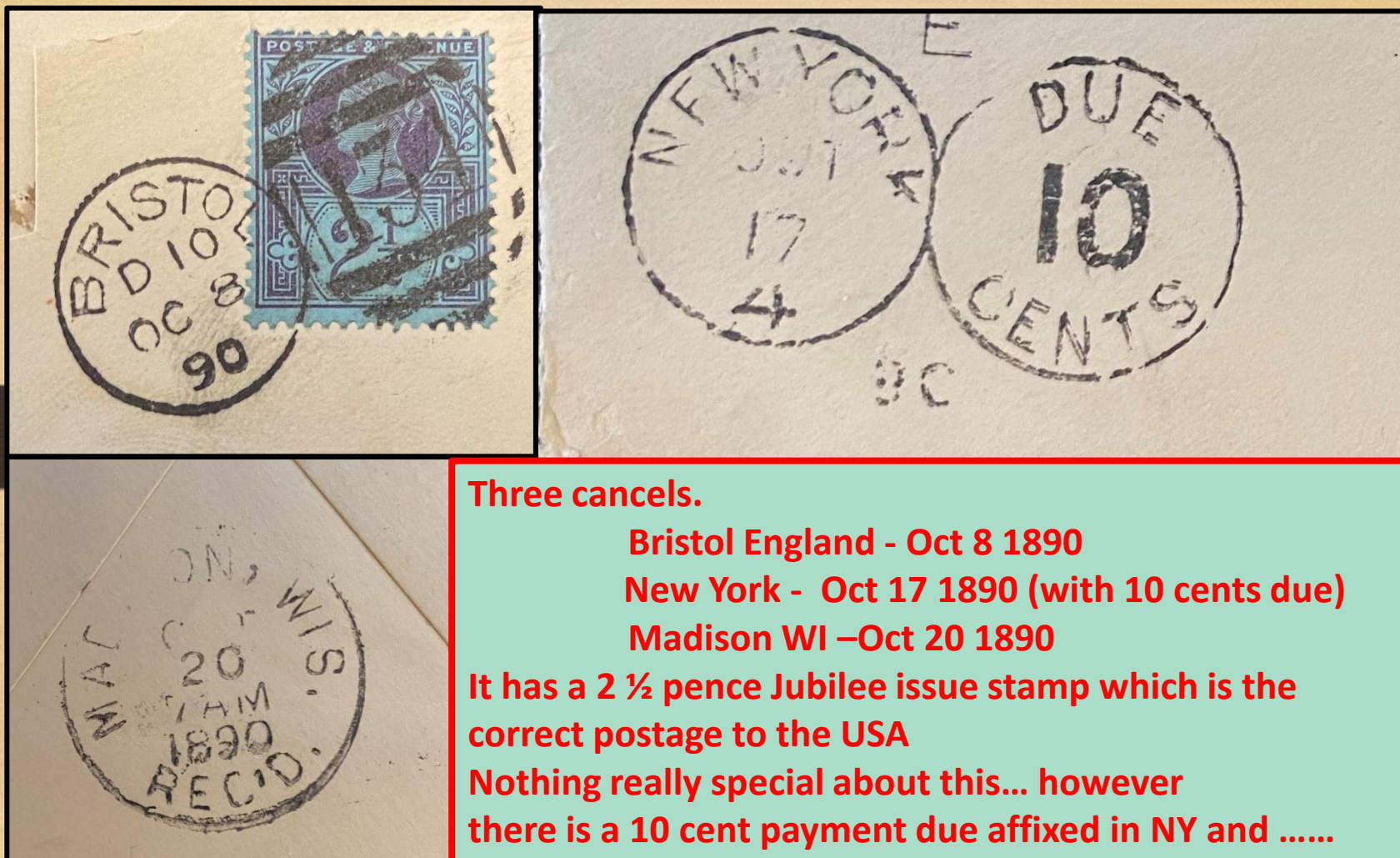


AN ORDINARY 1890 GB COVER OR IS IT ?



AN ORDINARY 1890 GB COVER OR IS IT ?



Three cancels.

Bristol England - Oct 8 1890

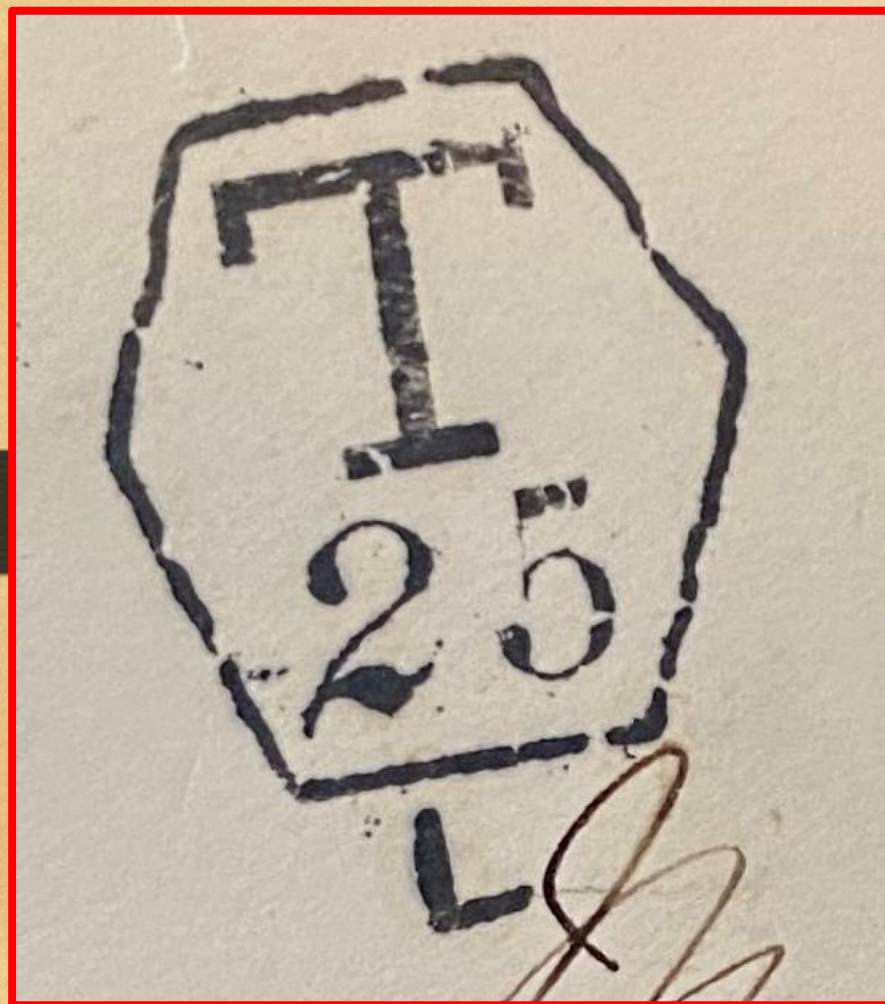
New York - Oct 17 1890 (with 10 cents due)

Madison WI - Oct 20 1890

It has a 2 ½ pence Jubilee issue stamp which is the correct postage to the USA

Nothing really special about this... however there is a 10 cent payment due affixed in NY and

AN ORDINARY 1890 GB COVER OR IS IT ?



There is a very unusual and rare cancel from GB:

It follows Postal Union regulations:

The "T" is for "Taxe"

The "25" is 25 Centimes

The "L" represents the London Foreign Office

In 1890 the exchange rate between France and the USA was FFR 1.0 = \$ 0.20. So 25 centimes would be 5 cents. Yet in NY there was a charge of 10 cents !!

Unknowns:

Why extra postage as 2 ½ d was standard?

Why did a letter Bristol end up at the London Foreign Office?

Why no other cancel from London?

Why this special cancel?