



# The “A.L. Scovill and Company.” RS221e on Experimental Silk Paper

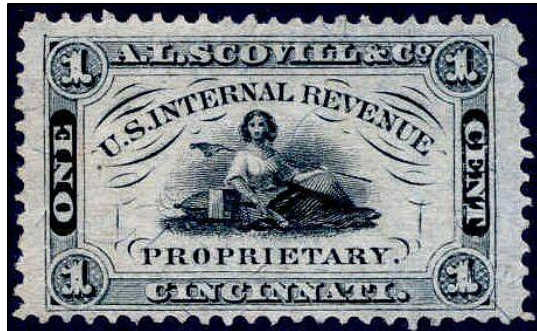
Brief History & Examination of Paper

*by Charles J. DiComo, PhD*

April 2021

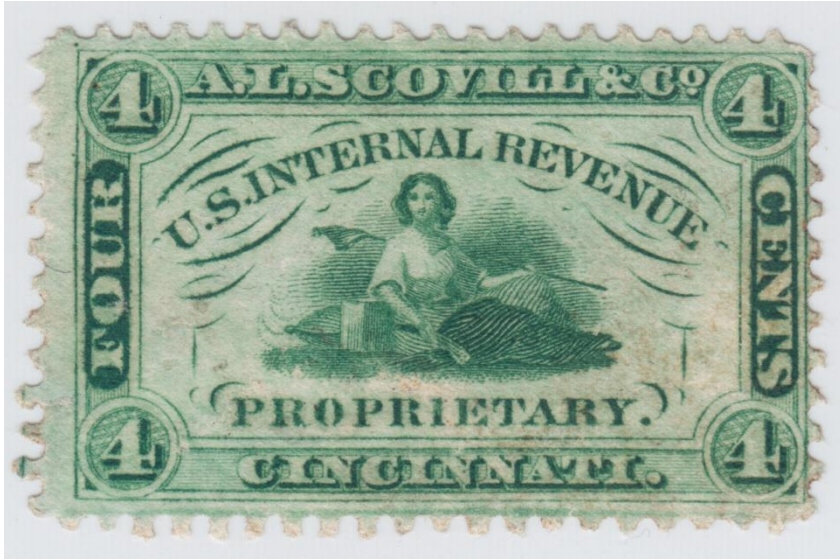
# A.L. Scovill & Company, Cincinnati, OH.

- ▶ In 1849, Amon L. Scovill formed a partnership with Henry E. Morrill to market “Dr. Roger's Compound Syrup of Liverwort, Tar & Canchalagua”.
- ▶ By 1857, the firm produced a number of other medicines, including “D. Wm. Hall's Balsam for the Lungs”, “Scovill's Compound Extract of Sarsaparilla” and “Stillingia and Circassian Hair Restorative”.
- ▶ By 1862, Scovill seems to have exited the firm, returning by 1867. General issue stamps would have been used for a time.
- ▶ By 1872, the Scovill business was taken over by John Henry.



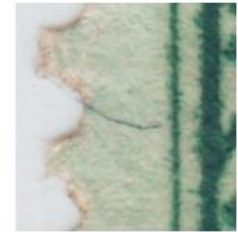
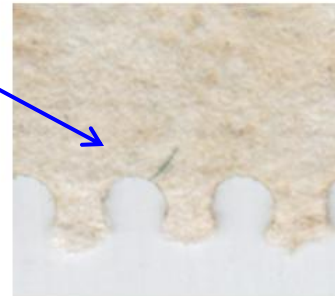
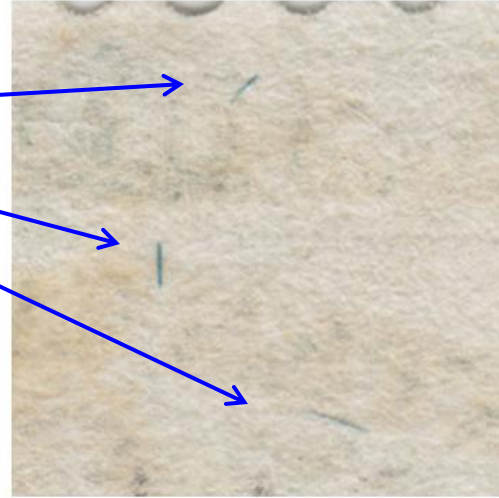
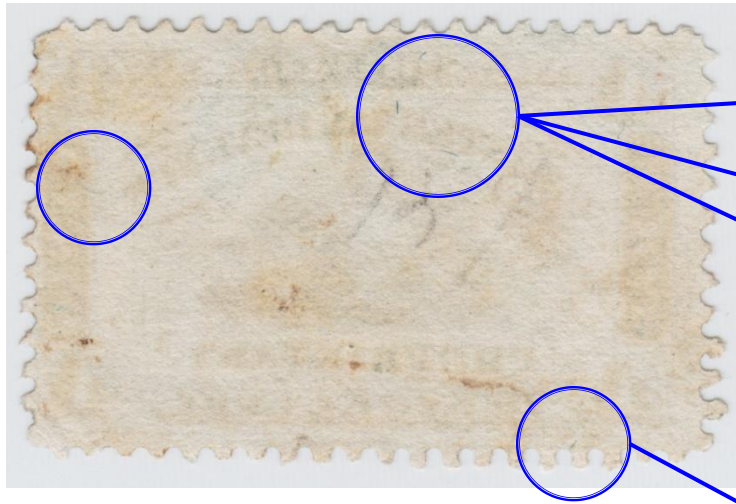
- ▶ RS220: 1¢ black, issued 1864–1873. 7,016,444 on old paper & 900,320 on silk paper.
- ▶ RS221: 4¢ green, issued 1864–1873. 3,834,928 on old paper & 810,676 on silk paper.
- ▶ Some were printed on Experimental Silk paper, which exhibit minute pieces of silk thread (blue or red) widely scattered within the paper, sometimes only one (1) fiber.

# The 4¢ Green A.L. Scovill Stamp



4¢ bright green, central image of a seated female figure supporting with her left arm a pole bearing a Liberty Cap. "U.S. Internal Revenue" above and "Proprietary" below, with "A.L. Scovill & Co.", "Cincinnati.", and "Four Cents" in outer surrounding frame. Design 33x20 mm, engraved and printed by Butler & Carpenter, Philadelphia, PA.

# Upon close examination, the stamp is on Experimental Silk Paper, RS221e



## Experimental Silk Characteristics

- Thicker than old paper.
- Printed image appears bolder than on old paper
- Whiter and more fibrous than old paper
- Contains a number of short, thin blue (and red) fibers, embedded in paper.