

PHILATELIC SOCIETY OF LANCASTER COUNTY
POST OFFICE BOX 982
LANCASTER, PA 17603

MEETINGS - 2nd Wednesday of each month
STAUFFER MANSION at 7:30 P.M.
1241 Lititz Pike, Lancaster, PA 17601
Next Meeting-Wednesday, NOVEMBER 13, 1991

VOL 2 NO 11

FOUNDED MAY 20, 1938

NOVEMBER 1991

PRESIDENT'S REPORT

Dick Shaefer, President

Have you ever tried to find the price or other information on a stamp that Scott does not list in one of their catalogues? In some instances it can be a real chore.

A case in point... I have been seeking to find some information on some Spanish airmail stamps. The Scott Catalogue that I have makes no mention of these particular stamps not even a sentence to let a collector know that such stamps exist. Since the Scott Catalogue has nothing, the next step is to explore other sources of information.

Next I turned to an old Sanabrie's Air Post catalogue. Well at last here they are. Actually these stamps are listed under IFNI (which was a spanish enclave in the western part of French Morocco) and identified as stamps 19 to 25. Mission accomplished you would think. Well not exactly. What I am trying to determine is a price for this set. The catalogue in which I found the listing was published in 1950. No current prices available. A suggestion from a club member is that a dealer in Spanish stamps may be able to provide a current price on these stamps. He will check.

The point of all this is simple. Scott catalogues are the bible that most of us use for stamp information. Our bible has missing pages. The staff at Scott's Publishing makes a determination, for all of us, as to what is a real stamp, and therefore, what we will collect. By not printing information on a stamp, they act as though that stamp doesn't exist. (Even though they did list these stamps at one time). My reaction is that if the stamp exists then it should be listed along with a price. Even if it is suspected to be fraudulently produced, it is part of the stamp history of a country and should be listed. The

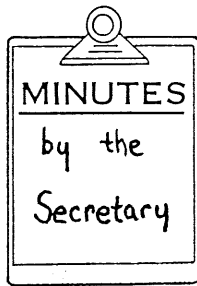
listings would take an insignificant amount of space. Let me, as a collector, decide whether I want to include these stamps in my collection. The catalogue makers should be accumulators of information, not judges of what to collect or not collect.



Bob Allison will be in charge of refreshments at the NOVEMBER MEETING.

NOVEMBER PROGRAM

Jim Boyles informed the members that the program for the November meeting will be the attendance of the local Ben Franklin Stamp Club, who will be mainly 5th and 6th graders and their teacher advisor. Since we can't anticipate how many will be coming, it is difficult to plan a welcome for them. We agreed that each member should bring something to show them, e.g., a specialized collection, a hand decorated page, a stock book of duplicates or whatever. In addition, most collectors save the interesting stamps from their mail, mostly on paper, and never do anything with them. How about weighing out a quarter pound on your kitchen scale and putting them in a baggie to bring to the meeting where each guest will receive one as a memento of the occasion. The rest we can give to Truys Greiner for distribution at the juniors' table in the April Show. We will include an instruction sheet for properly soaking off the stamps and storing them. If anyone would like to prepare a short "How To" talk and/or demonstration, that too, would be welcome. Remember, these are eleven and twelve year olds that would welcome advice from more advanced collectors.



President Dick Shaefer called the meeting to order at exactly 7:30 p.m. He first reported that LCPS's total worth, including checking, savings and certificate of deposit, is \$2,864.37. Discussion on the Christmas Party and the '92 stamp show consumed the balance of the meeting. Details of the two events will be found elsewhere in the newsletter.

Dick asked for volunteers to seek nomination as Vice-President of the club. We received two, C. Daniel Anspach and Richard Botte agreed to run. Richard accepted the nomination with the understanding that for three months in the new year he would be unavailable because of his work as a tax consultant. Elsewhere in this newsletter you will find short bio's. of each and a ballot. Vote at the November meeting or, as per usual, mail your ballot to Marilyn Shirley, 19 Circle Road, Millersville, PA 17551 so that she receives it by Saturday, November 9. The meeting was concluded by 8:15 p.m. and the "Member's Bourse" program began.

————— '92 STAMP SHOW UPDATE —————

The LCPS Stamp Show will be held this year on April 25-26, 1992 in the Boscov Mall at Park City. There will be an environmental show going on at the same time and should attract even more people. Much planning and ground work must be done in advance to assure a successful show. For instance, Baltimore and Philadelphia papers must receive 90 days' notice prior to the event in order to publicize the show. Dick requested that anyone with a space to store the club's show frames, please come forward. Currently, the frames are in Marilyn Shirley's garage and with winter approaching, she would like to bring her car in from the cold.

A theme is needed for the cachet for the souvenir envelope that is sold at the show. Preferably, it should be connected with Lancaster, but such general themes as the 500th Anniversary of Columbus's landing would be considered. Again, timing is important as the Post Office requires ten weeks prior notice to the show to prepare a special cancellation.

Still with the show, all you artistically inclined members, please give thought to a design for the medal which will be awarded in gold, silver and bronze for the various judging categories. You can draw it any size you wish and the metal casting company will reduce it to a working size. It could be round, rectangular or oval, but remember if you draw a complex design on 8 x 10 paper, the details should show on the finished product, possibly 3 inches round or 2 x 2 square. It should include the words "LANCOPEX" or LCPS. Bring your designs to the November meeting. The winning design will receive recognition at the Christmas Party. If you are not coming to the November Meeting, mail the design to Jim Boyles, 637 New Holland Ave., Lancaster, PA 17602 by December 1, 1991. One hundred medals will be cast at a cost of \$250.00 and it is expected that we will have a three-year supply.

Members who volunteered to chair Stamp Show Committees and their respective committees follow:

GENERAL CHAIRMAN ----- Jim Boyles

AWARDS ----- Dave Strayer

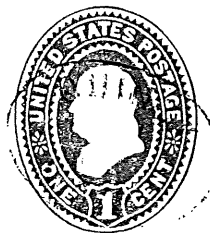
EXHIBITS ----- Bill Greiner

OPERATIONS ----- Dick Shaefer

PROGRAM EDITOR ----- Marilyn Shirley

PUBLICITY ----- Ott Kirchner

Any of our members may be asked to assist with any committee needing help. Additional committees may be formed and chaired as the need arises.



HOW TO COLLECT POSTAL STATIONERY

PART IV OF V (Continued From Last Month)

Because of the unique and colorful character of much of the Postal Stationery, it often attracts more attention in stamp exhibitions than other philatelic material. The exhibitor has the pleasure of showing his collection to an interested audience, as well as matching his skill in the selection, mounting, and explanations of his material with other collectors.

It is by no means necessary to have a collection of rare or unusual items to have a winning exhibit. While rarity is one factor with the judges in most shows, there are many other things which are equally important, such as: skill in presentation, clarity of explanations, and ingenuity in the conception and organization of the exhibit.

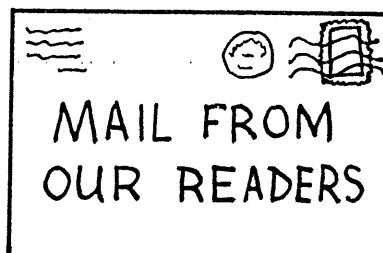
The preparation of Postal Stationery for exhibit presents special problems, but these offer an interesting challenge and they are by no means insurmountable. The art of mounting stationery, with its larger pieces than adhesives, and of writing it up is one that can be learned only by practice, and by studying exhibits of other collectors.

Many stamp shows have special sections for Postal Stationery, but in any case, exhibits of it frequently win the show awards in competition with adhesives. In addition, the United Postal Stationery Society awards its coveted Marcus White Trophy in shows which have sufficient competition for it. Then at the Society's Fall Convention each year all of the winners of this trophy during the preceding year compete for a Special Award in an exclusive Court of Honor Competition that is judged separately from the open competition of the host show. This annual championship competition is known as The Marcus White Memorial Postal Stationery Showcase.

New Issues of Postal Stationery are appearing almost every month, and new varieties of existing issues are often discovered. This is where membership in an organization of collectors may be of special help. There are several such societies, including those organized in Belgium, France, Germany, Italy, Netherlands, Sweden, and Switzerland.

The largest organization, and the major world-wide one, is the United Postal Stationery Society, with members throughout the United States and in many foreign countries. Its magazine, "Postal Stationery", provides good articles on the stationery of many countries. Its Newsletter also contains stationery information, and they publish catalogs and handbooks on stationery.

(TO BE CONCLUDED IN DECEMBER ISSUE)



APPRECIATION NOTE FROM BILL CARROLL
October 19, 1991

Please accept the sincere congratulations of my wife, Marian, and myself on the Philatelic Bulletin that you are now editing.

Thank you for sending to Maple Farm while I was there. I'm now at home but confined to our apartment as I cannot manage to get about without a walker. I'm hoping that the bed sore ulcer will soon heal.

Sorry that I'll be missing both the meeting and probably the Christmas party.

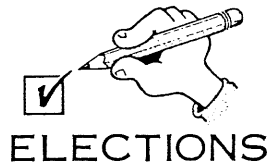
My best to all, Good Luck.

Sincerely,

(signed) Bill Carroll

(From the editorial staff -- Thanks Bill, we appreciate your letter.)

A T T E N D A N C E



Seldom do we have the luxury of having two candidates for an officer's position in our club. Herewith are short bio's of Clinton Daniel Anspach and Richard Botte, nominees for Vice-President.

C. DANIEL ANSPACH

Dan is 34 years old, married, with two children - both girls - 6 and 8 years old. He attended Warwick Elementary School and Donegal High School. Dan is employed as a bindery printer. A collector for 24 years, his specialties include Duck Stamps, both state and federal, and plate number coil strips. He is a member of PNC3 and is awaiting acceptance into the APS. His interest is in promoting youth in stamps by donating stamps to the Ben Franklin Stamp Club.

RICHARD BOTTE

Richard is 36 years old, and married to our 1992 President, Leslie Botte. He attended Charminade High School, Mineola, NY, Rensselaer Polytechnical School, Troy, NY, York University and Albright College Evening School. Richard has a degree in Accounting from Albright College. He is presently working for Ernst & York, an accounting firm. Some of his interests are collecting stamps, target shooting and reading. Richard is a member of APS, Mohnton Fish and Game Protective Assoc., Berks Pistol Club, and attends Our Mother of Perpetual Help Church in Ephrata.

We had the best attendance in many, many meetings, with 29 members and guests coming out. It pointed up a need for a larger and possibly less expensive meeting room. A decision to move our meeting to the Manheim Municiple Building will have to be made by January 1, 1991, when the Club must commit itself for another year if we stay at our present quarters.



The club has committed itself to holding the annual Christmas Party at the Brunswick Hotel. The committee that made the arrangements say the luxurious room will be festively decorated for the Holiday Season and musical entertainment will be provided by Mrs. Elsie Hollinger at the piano to further put you in a party mood. We are privileged to have the Lancaster Postmaster, Mr. Patrick Donahoe, as our guest speaker of the evening. You will recall the menu was included in the last newsletter. By a unanimous "aye" vote, the members agreed on Tom Turkey and London Broil as the choice of entrees. Hors D'oeuvres will be from 5:30 to 6:30 P.M. with dinner served at 6:30 P.M. A cash bar will be open across the hall. The parking garage will be available to members and guests from 5:00 P.M. until midnight for a one dollar fee. The cost of the dinner will be \$12.95 per person with 22% added to the bill. Members and guests will pay the \$12.95 and the club will pay the 22% gratuity and sales tax. Please make payment at the November meeting. If you do not plan to attend the meeting and wish to go to the Christmas Party, please mail a check, payable to L.C.P.S., for yourself and each of your guests by NOVEMBER 15, 1991 to Sarah Brown, 1623 Wilson Ave., Lancaster, PA 17603.

