

# Philatelic Society of Lancaster County



An Affiliate of the American Philatelic Society: James Buchanan Chapter, # 173

**Christmas Party: Wednesday, 9 December 2009**

Dining room opens at 6:00; Buffet starts at 6:30 PM

The Garden Café / Woodcrest Villa



## Menu

**Fresh Baked Rolls**

**Fruit Cup**

**Tossed Salad with Choice of Dressings**

**Chicken Stuffed with Spinach & Feta  
Cheese in Creamy Garlic Sauce**

**Beef Bourguignon with Mushrooms, Onions, & Peppers in a Burgundy Sauce**

**Poached Salmon in Dill Sauce**

**Noodles, Fresh Green Beans,  
& Patty Pan Squash**

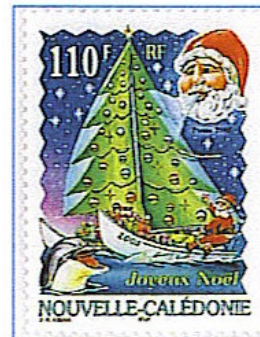
**Home Baked Desserts  
(Supplied by club members)**

**Coffee, Tea, & Water**

**Music & Karaoke**

**By John Bray**

**Gift Exchange**



Please note change in location for Christmas party. It will be held in The Garden Café at Woodcrest Villa. Directions: Page-2

**Volume 72, Issue 12**

**December, 2009**

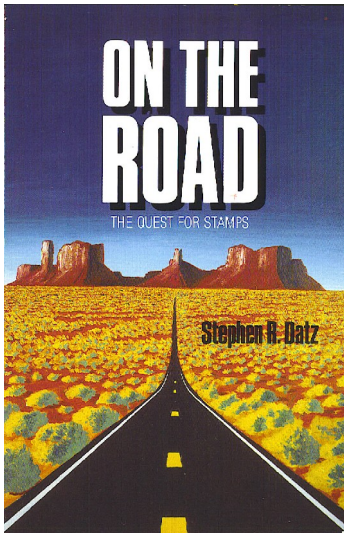
**Inside this issue:**

|   |   |
|---|---|
| Buffet Menu   | 1 |
| November Minutes  | 2 |
| And Treasury  |   |
| Dues Notice   |   |
| The Garden Café   |   |
| Book Review   |   |
| From the President  | 3 |
| Wm. P. Snyder   |   |
| Club Notes:   |   |
| 2010 Presentations &<br>Other Activities  |   |
| December Bio:   |   |
| Mike Matus  |   |
| Musings:  | 4 |
| How about that trade show?  |   |
| PSLC Meets the second Wednesday of the month (except August) at The Garden Café/ Woodcrest Villa at 7:00 PM |   |
| President:  |   |
| William P. Snyder   |   |
| Vice President:   |   |
| John Ahlfeld  |   |
| Secretary:  |   |
| Joy Bouchard  |   |
| Treasurer:  |   |
| Clair Smith   |   |
| Newsletter Editor:  |   |
| Paul Petersen; 717.299.5640   |   |



### On The Road: The Quest for Stamps

In an earlier PSLC Newsletter was a book review of *Nassau Street* by Herman Herst, Jr. This was about Herst's life as a stamp dealer from the 1930s to the 1960s. Stephen Datz's book is a similar endeavor of his philatelic dealings out of Colorado from 1961 through the book's publication in 1991. Datz has written several other stamp hobby books through the early 2000s including *Stamp Investing*, *Catalogue of Errors on US Stamps*, and *Top Dollar Paid* to name a few.



*On the Road* is different from Datz's "How to..." books that many of us have read. He recounts many escapades with the keen eye of a first-rate observer. First there was the bourse roof cave-in during a storm and how he helped save the stock of many dealers in the downpour.

Datz went on a three state chase after hearing about the possibility of an inverted Jenny (C3a). Unfortunately the stamp was a well done fake in a plastic slab.

Besides Datz's adventures, readers will glean much philatelic information such as stamp condition, auctioning, travel tips, financial risk, and more. Ed □

### Secretary's & Treasurer's Reports Joy Bouchard & Clair Smith: November 2009

**New Meeting Site:** Bill Snyder and Lucy Eyster opened with a discussion on the temporary move. Because of a remodeling project, club meetings will be held in the Garden Café at Woodcrest Villa starting in December and continuing through late spring. See article below for directions. Consider a practice run to the Garden Café in daylight if you think you will have trouble finding it in the dark for the first time.

**Donation:** The club voted to donate \$250 to Woodcrest Villa for use of our meeting room this year. Lucy added that PSLC has been approved to hold meetings again for the 2010 year.

**October Drawing:** Dick Shaefer

**October minutes:** Approved

**Guests:** Junior member Abigail Brighton brought her father, Andy, and her grandfather, Carl, both stamp collectors.

**Club Trip:** Roy Baardsen discussed the successful trip to the National Postal Museum, US Capitol, and others. The finances worked out well, and he is seeking input for the 2010 trip.

**Dues:** Lucy will be collecting 2010 dues (\$10) and issuing membership cards. Bill added that APS dues are also due. Persons interested in joining APS should visit their website: [www.stamps.org](http://www.stamps.org).

**Nominations:** For the committee, Eleanor Wheeler announced that John Bray accepted the nomination for the club's vice presidency. Bill asked all 2010 officers to

stand and be recognized.

**2010 Programs:** Club officers will be meeting to work out the year's programs. They seek your input. Ideas from membership include Tax-estate implications; a philatelic quiz (like College Bowl); and paper types. Contact Bill with your suggestions.

**Christmas Party:** Lucy updated membership. (See separate article below.) John Ahlfeld reminded members to contribute a "philatelic" item (+/- \$5.00) if desiring to participate in the gift exchange this year.

#### The Treasury:

- Opening:** \$4,689.13 (1 Oct 09)
- Income:** \$20.00
- Expenses:** \$12.00
- Closing:** \$4,697.13 (31 Oct 09)

### New Site for Club Meetings Starts in December

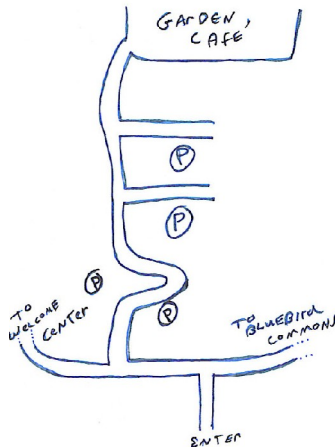
#### Christmas Party

This will be held Wednesday, 09 December. Doors will open at 6:00 PM with buffet at 6:30.

Cost: \$7.00 per person. Pay at the door. Please bring a dessert such as cookies to share.

If you have not made your reservations or want to add a guest, call Lucy at 735-2586 before 4 December 2009.

For the gift exchange, please wrap a **philatelic gift** of \$5.00.



#### To the Garden Café

The Café is not hard to find!

Enter Woodcrest Villa from Harrisburg Pike.

At the T-intersection, turn left.

Make the next right.

The Garden Café will be well lit with large windows and white columns sitting at the end of the road. Almost all parking is for visitors, so park close to the building. Follow road signs to the "Garden Café" if needed.

✂..... Date: \_\_\_\_\_

Please dip this notice, complete it, and turn in with \$10 to Lucy Eyster at the December club meeting. You may also mail it to Lucy at 2001 Harrisburg Pk, B503, Lancaster, PA 17601

Name: \_\_\_\_\_ Phone: \_\_\_\_\_

Email Address: \_\_\_\_\_

Please encourage your non-member stamp collector friends to join and enjoy the benefits of membership. Make this your New Year's resolution: "Every member get a member."



## Miscellaneous Club Notes: Programs/Hosts, Membership, & Shows

### 2009 Programs & Snacks:

**9th December:** Christmas Party at The Garden Café. No Host

### 2010 Programs

**13th January:** Club Auction. John Ahlfeld, Host

**10th February:** Stamp Technology Basics. An APS Slide Show. Paul Petersen, Host

**10 March:** 1.) "Peel 'n stick" for Lancopex. Jim Boyles. 2.) Philatelic Quiz. Bill Snyder

**Upcoming show reminders:** *Some 1st Sunday Stamp Shows*, Farm & Home Center: • 7 Mar 2010, • 6 June, • 1 August, • 3 October, • 5 December (Dates are subject to change, so please verify with Jim.)

**National Award:** At the APS Stamp Show in Pittsburgh, Jim Boyles won a large gold medal for his Lancaster city exhibit.

**Collectors Club of NY Exhibit:** On 11 November, club member Dick Colberg had a one

frame exhibit at the CCNY entitled *The advertising Covers of the Moline Plow Co.*

**Membership:** Our newest member is Carl Brighton of Malvern, PA. He has been collecting over 70 years including US and Poland country collections.

**Scott Catalogues:** Truylde Greiner has a 2001 set which she will make available to all club members. Call her at 399-0879 to make arrangements.

## From the President Wm. P. Snyder

Club members were saddened to learn of Mike Matusko's death. Mike had a number of serious health problems, but he was consistently optimistic and positive. He always had an upbeat response and smile. The LCPS will miss him greatly. Thanks to those who represented the stamp club at Mike's visitation. Join me in extending condolences to his family and to Lesley Ann.

"The Post Office is a wonderful establishment," so said Jane Fairfax, a character in *Emma*, the 1816 Jane Austin novel. But Jane would be singing a different tune today: USPS mail volume fell by 13% in fiscal 2009. In dollar terms, the USPS lost \$3.8 billion in

the fiscal year 2009. This is \$1 billion more than the \$2.8 billion lost in 2008. The losses came despite service cuts and a 40,000 reduction in the USPS work force. And the US Postal Service was not alone. Countries as diverse as Finland, India, Japan, and Great Britain had similar declines in postal usage.

So where does the USPS go from here? In the next few years, there will probably be additional layoffs, a move from the six-day to a five-day mail delivery, and a consolidation of bulk mailing centers. With a public increasingly concerned about financial bailouts and federal spending, the country may soon be forced to consider a dif-

ferent kind of postal service delivery.

One approach is privatization. Three countries, Germany, Belgium, and France, have had success with an approach that combines traditional postal services with package and express services. The private companies in these countries have spent heavily on automation and have, thus far, achieved generally good results. Might UPS Mail or FedEx Mail be in our future? And how will we collect UPS and FedEx indica-

My wife joins me in sending Christmas greeting to all in the LCPS family. See you at our dinner on December 9th.

**Bill**

### December Bio:

#### Mike Matus

Mike used to mow lawns as a youngster to purchase his stamps for a penny a piece. He was able to build sizable collections. After a several year hiatus his wife, Myra, encouraged him to return to the hobby he loved. He then concentrated on Ireland with a special interest in the 1922 overprints.

Myra is from the Ukraine, and she suggested a collection of her homeland's stamps. There are at least 4K varieties. Many are made from unusual materials such as wood and rubber. To increase his challenge, Mike added Western Ukraine to his country collection list once he was solid in Ukraine. Because he is always on the hunt, he has found some wonderful Western Ukraine bargains in accumulations.

"The hunt is everything," says Mike. As such, he does metal detecting and has collections in coins, paper currency, and military medals. Also with Myra's "encouragement," he is now starting to sell some of his collectibles, mostly on eBay which he loves. But as he admitted, he is still doing a little more buying than selling!

Mike joined PSLC a few years ago. He knew Al Schaub and Lesley Botte from the Reading Club who are also Lancaster members. With the offer of a ride with Roy Beardsen from Reading, Mike and several others have joined the club.

In 2002 Mike retired from Carpenter Steel after 30 years where he served in a variety of positions from production to administration.

Mike and Myra are from the Reading area and have a married son in Lancaster and a daughter at home. Their first grandchild was born in late October.



# Musings from the editor

## How about that trade show?

It might not sound very sexy, but the trade show concept may be a viable one to grow the Philatelic Society of Lancaster County.

This ties into the promotion of the hobby in which there are several schools of thought. These are not mutually exclusive.

The **first** is the **general approach**, and the club has made a dent with its ongoing library and post office displays. This appeals to the general population who frequent their local community libraries and POs. The philatelic materials for these displays are in place (in my office, to be exact), and we have club volunteers to set them up. All that is needed is the arrangements with the additional libraries throughout the county. This on-going activity is under club member Vern Marten's direction.

The **second** approach is to **the junior collector**. Lancaster has had a very successful junior club in the past, but the core group has all grown up and gone off to work or college. We currently have some very new and dedicated junior collectors in the club, but distance and school night meeting times do not always suit. Kids are the future of the hobby, and efforts to cultivate their interests are essential.

The York Stamp Club has an excellent Saturday morning program appealing to the children and their parents each month. Jim Boyles has been frequenting these meetings, and there is interest by some other Lancaster members to work with youth on a routine basis. Unfortunately our link to the large local home-school group has not yet panned out.

The **third** approach is to the **senior citizens**, those approaching retirement age and beyond. One advantage is that as baby boomers, many of this group collected stamps as kids, so there is an increased likelihood that they may resume the hobby, more than the generation Xs or Ys who never collected at all.

Let's return to the "trade show" idea. While I use this term, I am not talking about the hardware convention or the latest computer exhibit. More so, I am referring to the day-long "retirement fairs." There are a variety of these events held in the county from time to time. Some are free for an organization to participate, while others have a small fee to set up a table.

These events host organiza-

tions appealing to the older adult, and have information on health care, social programs, travel services, safety equipment, and various other hobby pursuits.

A few years ago I represented a non-profit organization at one of the community resources "trade shows." Once the busses emptied out in the parking lot, the folks came through the exhibit hall like locusts grabbing all the freebies offered by the many organizations. There was hardly anything left.

Heaven knows that between the club archives and membership, we have enough give-away stuff to sink a battleship. How happy my wife would be to see me unload so many of my magazines and infrequently perused stamp piles, covers, myriad small boxes, and pounds of pre-owned glassines. It would almost be as good as a fire, she thinks.

One could imagine some yield with such an audience, especially when they go home with lots of stamps.

What would it take for the club to get involved in such

an activity each year or so?

- A club member to head the project along with a few dedicated members.
- Research into availabilities, location, & cost (if any) of the appropriate venue(s).
- Preparation of a funding proposal to bring before membership. (This was done for the library and post office displays, and to date, the expenses have been less than \$65.)
- With club sanction, prepare and compile the materials needed for both display and give-aways.

What items are needed?

- ♦ Old *Linn's*, *SSMs*, *APs*, *Topical Times*, and others.
- ♦ Small stamp packets by country and topic.
- ♦ The free ASDA children's starter albums with stamps and hinges. (Remember that these folks may have grandkids.) Include beginning collector activities.
- ♦ Exhibit boards for display. Materials are already prepared and used with the library program. The sky is the limit. Ed □



This document was created with Win2PDF available at <http://www.win2pdf.com>.  
The unregistered version of Win2PDF is for evaluation or non-commercial use only.  
This page will not be added after purchasing Win2PDF.