

THE CARD – Vol. 27, No. 12, Issue 313, December 2016

A Publication of the Lancaster County Postcard Club, Lancaster, PA

Enjoying postcards through education and entertainment.

Next Meeting: December 19, 2016. Farm & Home Center. Dinner @ 6 PM

Like us on Facebook – www.facebook.com/LCPClub.

NOVEMBER MEETING

On one of the windiest days in November, twenty-one people signed in at the LCPC Club Table. We welcomed Joe Glass, the president's husband, as a guest for the evening and hope to see him again at the Christmas dinner.

President Glass asked the veterans to stand and be recognized for their service and received a round of applause.

Since the forgetful secretary left the club's minutes at home, Barb Mowrer gave the treasurer's report, noting a balance of \$8,659.36. President Glass reminded everyone that there was a get-well card for Walt Mowrer who is recuperating from whipple surgery and a sympathy card for Delores Rowe, whose husband Leon, a long-time member of LCPC and popular postcard dealer, has passed away.

In old business, members were reminded to sign up for the Christmas dinner, which will be held on December 19, the night of the regularly scheduled meeting. Beverages and dinnerware will be provided. Each member is to bring a dish to share. We will begin dinner at 6:00 p.m.

Again, President Glass asked for volunteers to fill several slots. Walt Mowrer will be the president, Barb Mowrer will be the treasurer, Betty Beck will be the secretary, but we need a vice president and board members as well as people to volunteer at the Club Table. As a volunteer at the Club Table, you could limit your time to volunteering for just one evening. That would be a big help.

Another way you could help the club is by picking out 4-6 postcards from your collection, writing down a couple of sentences, and giving them to President Glass who will create an article. It always good to hear from different club members, not just the same ones.

The \$11 50-50 jackpot went to Mark Arbogast and the door prizes of \$2 vouchers went to Sue Sweeney and Jackie Flaharty. Ed Close won the Lititz 4th of July swan postcard produced by Betty Beck's dad, Robert Kreider.

The program using Lititz postcards covered some of the town's little-told stories. We heard the trials and tribulations of Isaac Erb -- the "King Lear of the Lititz Mennonites"; the stories about Greektown -- the arrival of Greek immigrants to fill the unfilled jobs at the Animal Trap Company, and one-of-a-kind postcards of the Pfautzes, Betty Beck's paternal family. The show ended with an original postcard showing the Christmas stars around the street lamps, which were first used in 1933.

Thanks to Lee Fry for the information about the Ben Lutz swimming pool and his other observations.

DECEMBER MEETING

On Monday, December 19th we will put business aside to celebrate the Christmas season with our Annual Christmas Party. If you are planning to attend please call Susan @ 717-872-0810. Please bring your favorite dish to share. The club will be providing paper products and beverages. Dinner served at 6 PM.

We will be having our usual postcard competition. Please bring your competition card or a special holiday card to share with the group.

NOVEMBER POSTCARD COMPETITION

Four members competed in the single card competition on the subject "A Political Card".

First: Don Tribit Teddy Roosevelt & Family

Second: Leighton Stover Ike's Café

Third: Annetta Buettner Any Women?

Honorable Mention:

Dick Pendergrast

I Like Ike/Nixon

2016 POSTCARD COMPETITION SUBJECTS

December – Snow Person/figure – snow man, snow woman, snow animal....

FUTURE SHOWS

January 15, 2017 – The Great Jersey Shore Postcard Show, Ocean Fire Company, Point Pleasant, NJ, Sunday 9-4



BAYEUX TAPESTRY POSTCARDS

By Jim Ward

With internet information and illustrations from Alan LeMay

October 14, 1066 is the most famous battle in English history. The battle was fought 7 miles north of Hastings at a site close to the present-day town of Battle, East Sussex and named for the decisive Norman victory.

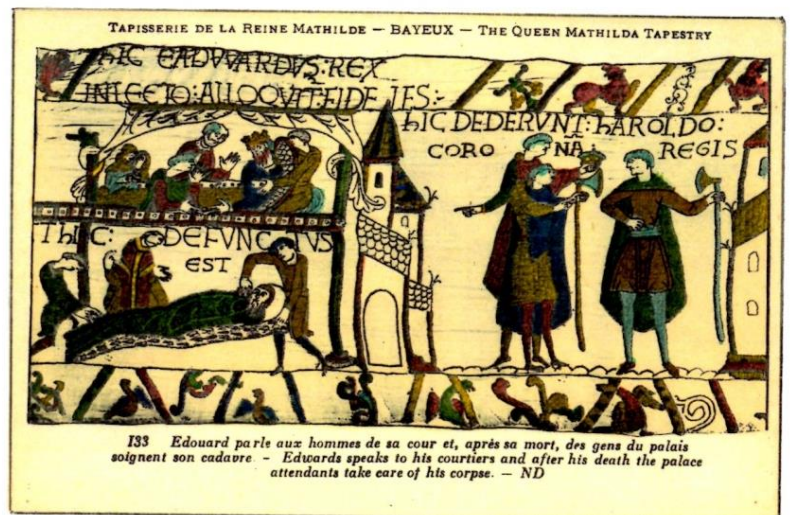
Vikings in the region (of present France) were known as "Northmen" from which Normandy and Normans is derived. Duke William of Normandy led an army against Anglo-Saxon King Harold Godwinson. William's forces were better equipped and composed of infantry and had just done battle with regional English just a short time before.

Fighting began at 9 AM and lasted until dusk. During the battle Harold was killed. Deployment and tactics can be seen at Battle of Hastings on Wikipedia, the free encyclopedia.

After his victory William expected to receive the submission of the surviving English leaders. Further battles ensued. The English leaders finally surrendered to William at Berkhamsted, Hertfordshire. William was acclaimed King of England and crowned on December 25, 1066.



#101 King Edward the Confessor commanding Harold to go and inform Duke William that he (Harold) will one day be King of England.



#133 Edward speaks to his courtiers and after his death the palace attendants take care of his corpse.

THE TAPESTRY

The tapestry consists of 50 scenes embroidered on linen with colored woolen yarns. It is 224.3 feet by 1.6 feet in size and is likely commissioned by Bishop Odo, William's half-brother and made in England (not Bayeux) in the 1070s. The tapestry depicts the events leading up to the Norman conquest of England concerning William, Duke of Normandy and Harold, Earl of Wessex, later King of England, and culminating in the Battle of Hastings.

This is NOT a true tapestry where design is woven into the cloth. In fact, it is an embroidery. Tituli (titles) are in the central zone, occasionally in the top border. The newly invented harrow is shown. Halley's Comet appears in the upper border of scene #32 – the first known picture of the comet.

The main yarn colors are terracotta or russet, blue-green, dull gold, olive green, and blue, with small amounts of dark blue or black and sage green. Later repairs are worked in light yellow, orange, and light greens.

The tapestry, seen as the final and best known work of Anglo-Saxon art, is now exhibited at the Musée de la Tapisserie de Bayeux in Bayeux, Normandy, France.



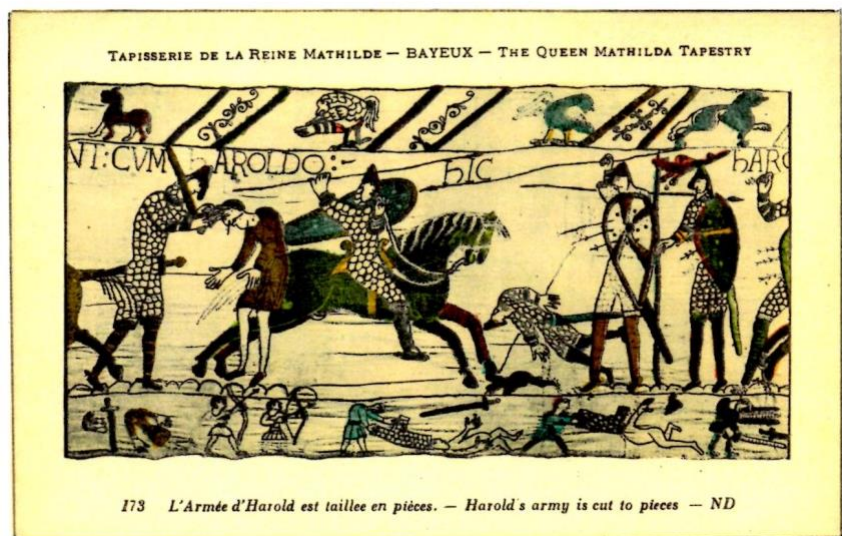
The comet



134 Couronnement d'Harold, le peuple lui rend hommage et se réjouit.
Crowning of Harold the crowd does homage to him and rejoices itself — ND

#134 Crowning of Harold, the crowd does homage to him and rejoices itself.

#173 Harold's Army is cut to pieces



173 L'Armée d'Harold est taillée en pièces. — Harold's army is cut to pieces — ND

USPS STAMPS BECOME POSTCARDS

By Jim Ward with
assistance from Louise Wile
and Alan LeMay

Postage stamps were issued in 2009 to recall some of the TV network shows we all enjoyed back in the “early” days of TV – the 1950s.



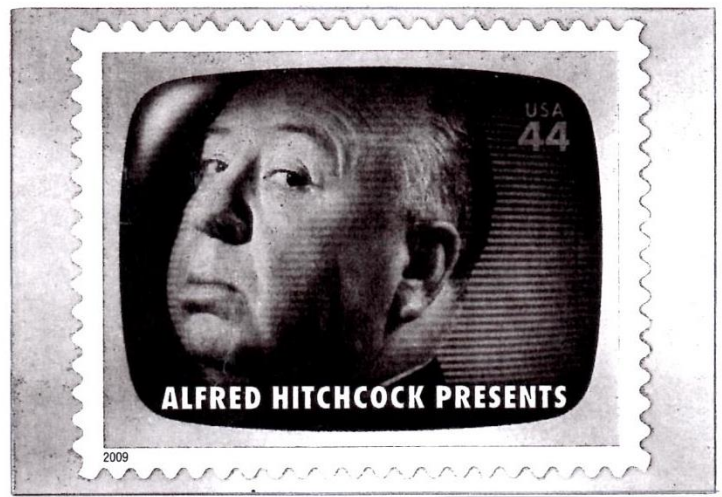
THE LONE RANGER marked its 75th anniversary in 2008. The masked man captured his loyal fans in books, movies and comics, as well as on TV. Clayton Moore was the virtuous hero in most cases. His Indian partner was Jay Silverheels (Tonto). The TV series aired on the ABC Television network from 1949 to 1957. Those who watched the show will never forget the Lone Ranger's call to his white horse: "Hi-yo, Silver, Away!"



The HONEYMOONERS was just one of Jackie Gleason's gigs. Besides starring with Ed Norton as neighbor Ralph Kramden, Gleason had his own show including characters like: The Poor Soul, Joe the Bartender, Charlie the Loudmouth, and Reggie Can Gleason. "The Great One" popularized his expressions "How Sweet it is" and "Away We Go."

1955 – 1957 Very popular show but ended production after only 39 episodes

ALFRED HITCHCOCK PRESENTS (1955 – 1962) was a series of mystery and suspense dramas. Its music was based on Charles Gounod's "Funeral March of the Marionette." Hitch introduced the episode and appeared at the end to reassure that the evildoers had been punished.

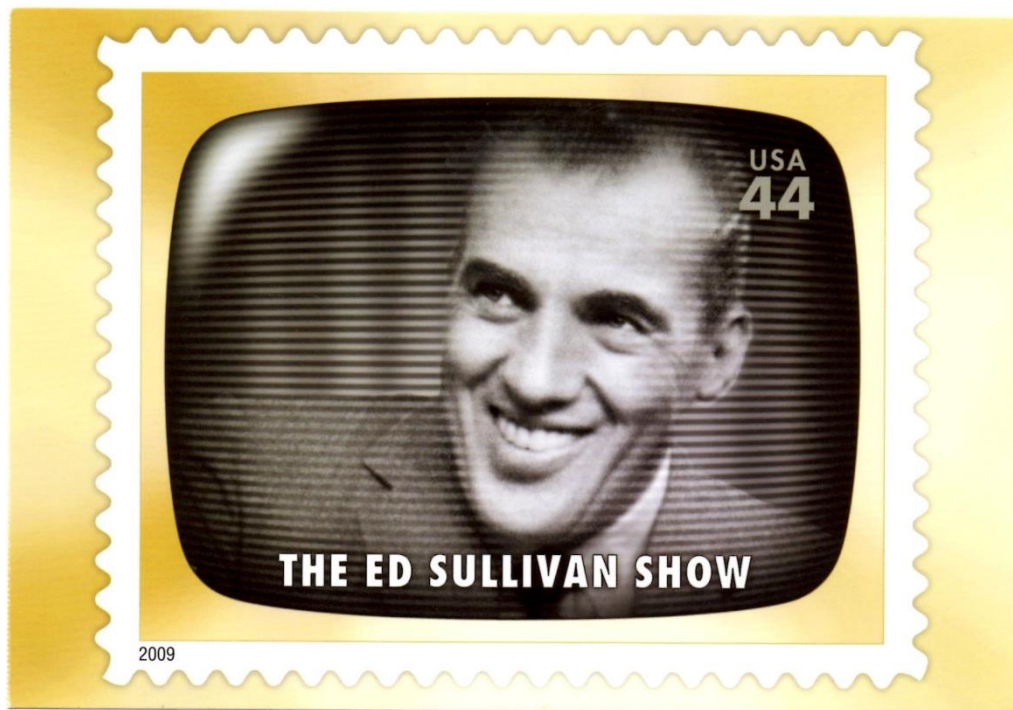
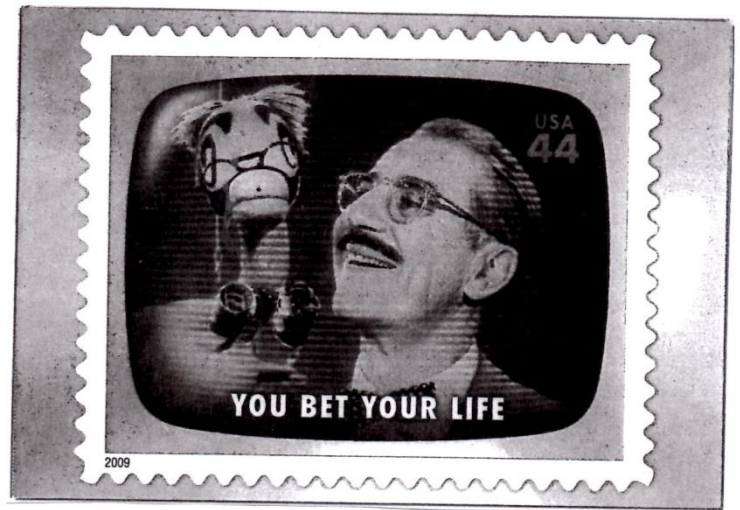


The DINAH SHORE SHOW (1951 – 1957) featured one of the most popular singers on TV. "See the USA in your Chevrolet" was a theme song. Her farewell kiss was a trademark at the end of the show.

THE PHIL SILVERS SHOW (1955 – 1959), based on a conniving Master SGT. Ernest Bilko, ran 4 seasons. Strong character ID prevented Silvers from obtaining other projects.



Few will forget the quips of the most popular of the four Marx Brothers. Groucho was interested in the contestant's odd background. The secret (common) Word offered more fun when the toy duck dropped from the ceiling with a cash prize. **YOU BET YOUR LIFE** ran for 10 seasons (1950 – 1960).



THE ED SULLIVAN SHOW ran for 23 years (1948 – 1971) and he sought the best in Broadway jazz, and rock-and-roll for his Sunday night entertainment. The early years were called “The Big Toast of the Town”. Among his biggest stars: The Beatles, Elvis, The Rolling Stones, The Supremes and The Jackson 5 to name a few.

Do you have more postcards to add to our list? They first appeared as 44 cent stamps.

