

THE CARD – Vol. 26, No. 12, Issue 301, December 2015

A Publication of the Lancaster County Postcard Club, Lancaster, PA

Enjoying postcards through education and entertainment.

Next Meeting – December 21, 2015. Farm & Home Center. Annual Christmas Party 6:00 PM

Like us on Facebook – www.facebook.com/LCPClub

NOVEMBER MEETING

President Susan Glass called the meeting to order at 7:00 p.m. Veterans were asked to stand up and were recognized. All rose to recite the Pledge of Allegiance. Twenty-one members signed in. Betty Beck read the minutes and they were approved as read. Barb Mowrer gave the treasurer's report, saying that the club balance is now \$8,223.80.

A board meeting was held before the meeting. Programs for 2016 and PC competition subjects were discussed. The tentative slate of officers for 2016 is:

President - Susan Glass

Vice President – Walter Mowrer

Secretary – Betty Beck

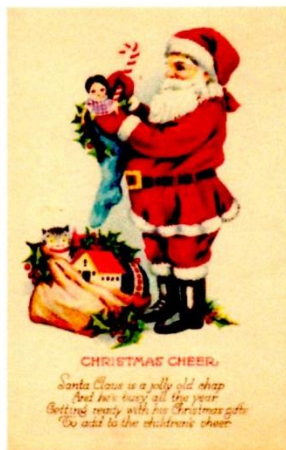
Treasurer – Barabra Mowrer Directors – Don Tribit, Bob Zink, Doug Milliken and Mark Arbogast

Jere Greider agreed to continue doing the publicity for the club. Help is needed at the club table. No experience required, just a willingness to serve.

Leighton Stover and Maria Schurz won the door prizes, each getting club vouchers. Ruth Moyer won the 50/50 of \$11.00.

CHRISTMAS PARTY

Please join us for an evening of food and fellowship on Monday, December 21. We will be eating at **6 PM** so plan to arrive prior to that with your covered dish – hot or cold, meat, salad or dessert – with a serving utensil. The club will supply the paper products and beverages. Bring a guest – the more the merrier! If you did not sign up at the November meeting, please let Sharon Gromis know if you plan to attend – 717-892-6864.



DECEMBER PROGRAM

The program "A Journey down Memory's Lane" will be presented by Mr. Ross Morrison who will entertain us with his memories of days of yore. His emphasis will be on winter and Christmas, using prose and poems with a touch of humor.

FUTURE PROGRAMS

January: Member Participation – New Year's card to share

February: Auction

March: Jere Greider - TBA

NOVEMBER POSTCARD COMPETITION

Eight members participated in the evening's single card competition on the subject – **LINEN POSTCARD**.

First: Walter Mowrer Bob's Diner (Columbia)

Second: Barb Mowrer Little Boy on a Potty

Third: Maria Schurz The Family - Sioux Indians

Honorable Mention: Betty Beck – McCaskey High School (Lancaster); Dick Pendergrast – Sammy's Bowery Follies (New York); Jere Greider – Coca Cola card (Frankfort, KY); Don Tribit – Girl in Every Port (Naval Dock); Leighton Stover – Southern Pacific RR (CA)

The competition subject for December is a **BOARD** on the subject – **JUST FOR LAUGHS**.

FUTURE SUBJECTS

January: A PC with "16"

February: The letter "V"

March: The color Green

FUTURE SHOWS

January 17 - Jersey Shore Postcard Club Annual Show, Ocean County Fire Co 1, Point Pleasant, NJ, Sunday, \$4 donation

January 30 – Paper Americana Show, Singley Fire Co, Elkton, MD

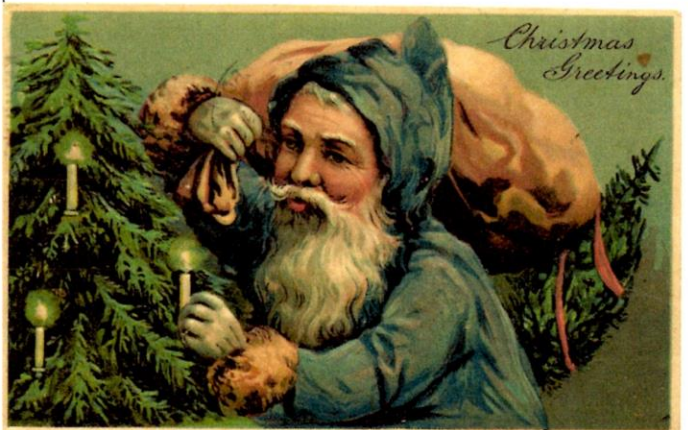
INCLEMENT WEATHER

If the Lancaster City Schools are closed on the day of our LCPC meeting – **the club will not meet**. For those of you who use FACEBOOK, look at the LCPClub page for closings. In the event the weather prediction is questionable contact one of these members to find out if we will have a meeting: President Susan Glass – (717-872-0810 or Walt & Barb Mowrer – (717) 684-5331.

A VERY MERRY CHRISTMAS TO ALL OUR READERS AND FAMILIES!

We offer, for your pleasure, four favorites of SANTA collectors. They're from the Paul Finkenrath (PFB) series #7312. One, with no message, is postmarked Dec. 23 in Hartford, Conn. It's addressed just "City" not unusual in those days. In fact, even in the 1940s, PCs and letters mailed within a city were often addressed like that. Another card, to Miss Alice Ryan, Riverdale Ave., Yonkers, NY, has a typical holiday message, "Dear Alice, I'm going to answer your letter as soon as I get time. I am busy getting ready for Xmas. I guess you are too. Wishing everyone a Merry Christmas and a happy New Year. I remain your friend Mary Louise.

Notice the use of candles back then. Even the tree Santa's delivering has candles attached, ready to light!



These Santa images are spectacular with the gorgeous beards and live-like faces. No wonder they command healthy prices.

The top row of Santas are Tuck Oilettes, the pair of blonde girls are in set #1822. The baby is from Series I. As with the Santas on the previous page, the handsome portraits are the key to these being Collectors' Delights, when you're fortunate to find them.

Below: Loving children get treats from Santa, while a sassy child may get more than bargain for from Belschnickle.



Christmas Greetings



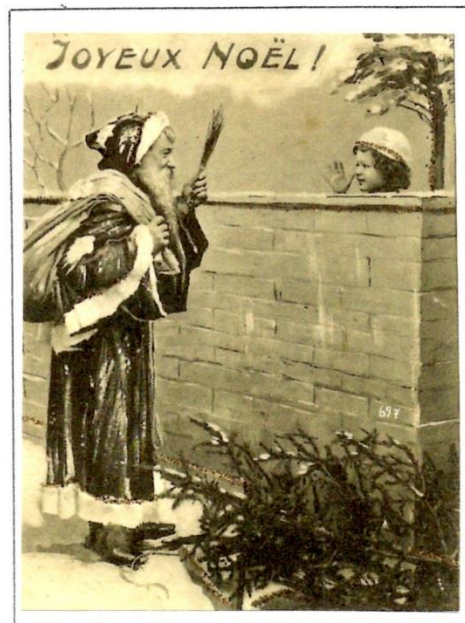
*Christmas Greetings
from Fairfield*

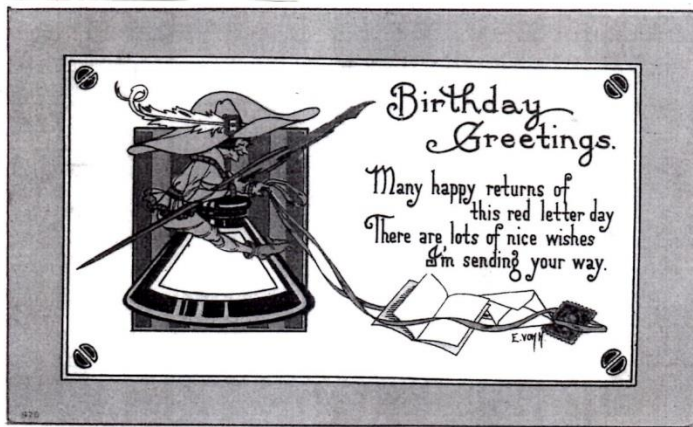


Loving Christmas Greetings



A HAPPY CHRISTMAS



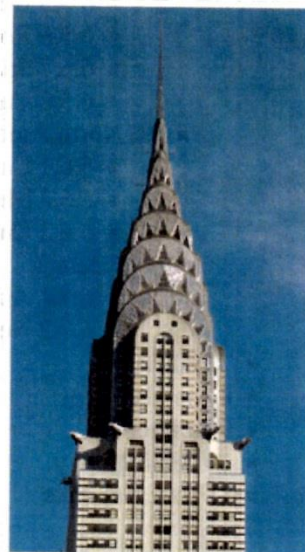


ART DECO on POSTCARDS

The Art Deco was an influential arts design style that first appeared in France after World War I. It was later - in the 1920s and 1930s, and even into the 1940s, that it gained international recognition. (See postage stamp of the New York World's fair of 1939.)

The style is often characterized by rich colors (see the Parker Duofold desk set), bold deometric shapes, and lavish ornamentation. It embraced technology, rather than the organic motifs favored by its predecessor, Art Nouveau

Bevis Hillier called it "a modern style taht ran to symmetry rather than asymmetry - rectilinear rather than curvilinear."



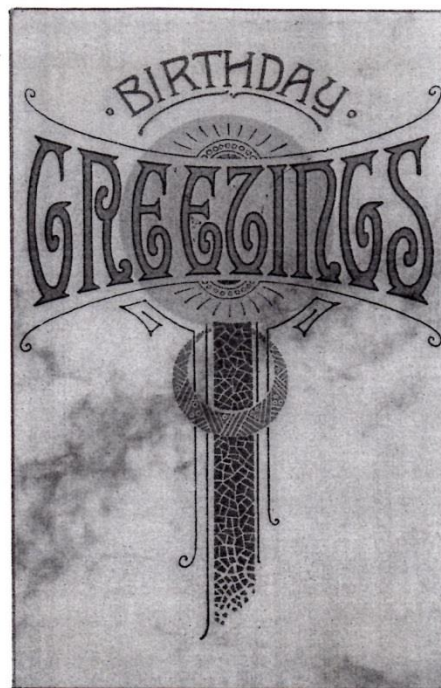
Art Deco spire of the Chrysler Building in New York City; designed by William Van Alen; built 1928-30

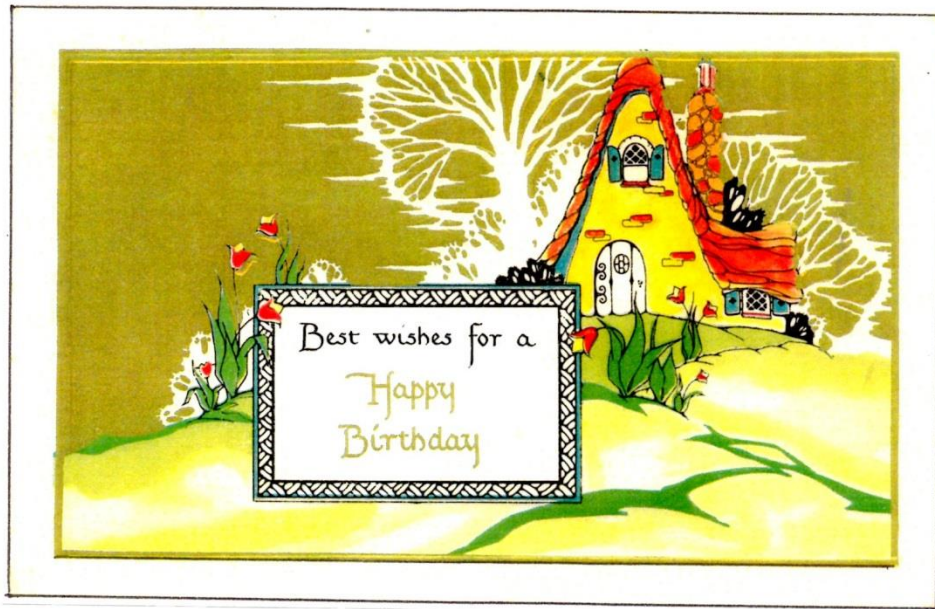


"Beau Brownie" camera, Walter Dorwin Teague 1930 design for Eastman Kodak



Parker Duofold desk set, ca.1930





U.S. postage stamp
commemorating the 1939
New York World's Fair, 1939

Many date Art Deco to the Exposition Internationale des Arts Decoratifs of 1925, but the popularity of archeology had searchers finding similar designs throughout the Anciet World.

Art Deco emphasizes geometric forms: spheres, polygons, rectangles, trapezoids, zigzags, chevrons and sunburst motifs. Modern materials include aluminum, stainless steel Bakelite, chrome, and plastics. Public works projects, railway stations, ocean liners, movie palaces and amusement parks. A resurgence of interest began in the 1960s.

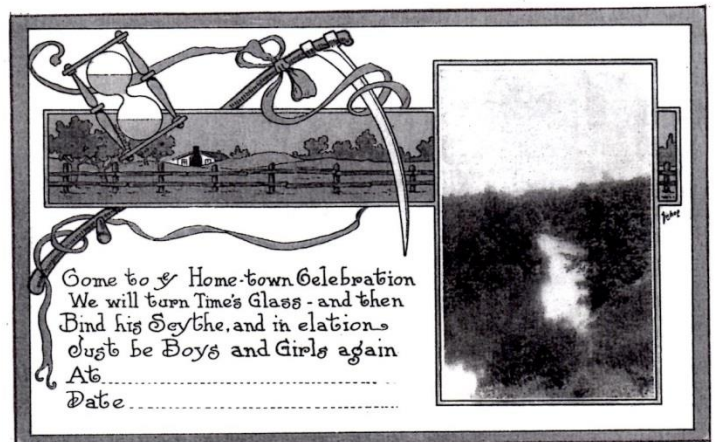
American Art Deco took the best of Europe and added inspiration from American Indians and Pre-Columbians.

Our PCs are dated from 1910 to 1926.

Article by Jim Ward with THANKS to
to Alan LeMay and Wikipedia.



Antoine Bourdelle, 1910-12, *Apollon et sa méditation entourée des 9 muses* (The Meditation of Apollo and the Muses), bas-relief, Théâtre des Champs Elysées, Paris. This work represents one of the earliest examples of what would become known as Art Deco sculpture



Just For Laughs – Is your board ready?

You shoulda been here!

I made a mistake; it knocked 'em dead/
Got my suit on backward! Was my
face red!

**WHEN TO THIS LITTLE PLACE
YOU HAVE TO JOG...**

**— PLEASE DON'T USE
THE WHOLE DARN
CATALOGUE**

**MY NEXT LESSON
TELLS HOW TO
OPEN IT!**

How Old are You?

I'm so darned miserable without you...

It's almost like having you around.