

# 18<sup>th</sup> ANNUAL POSTCARD EXPO

Sponsored by the Lancaster County Postcard Club

Lancaster, Pennsylvania

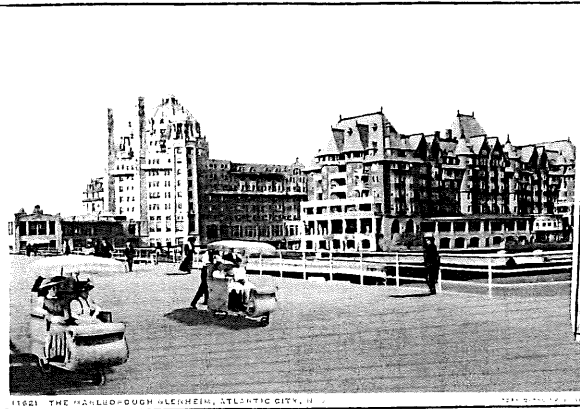
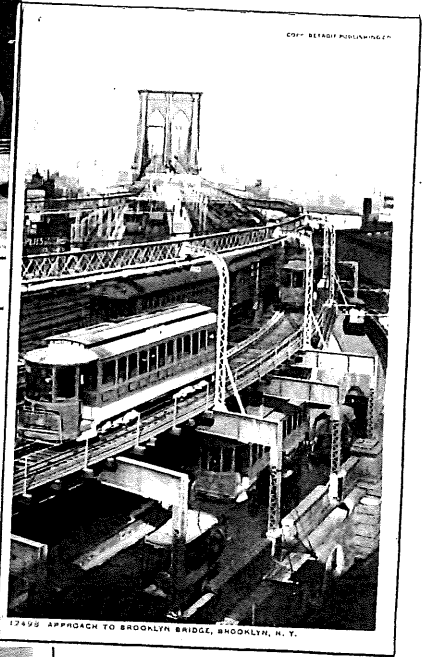
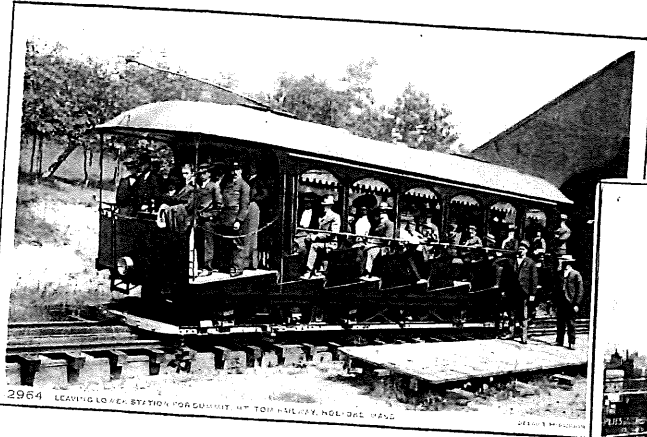
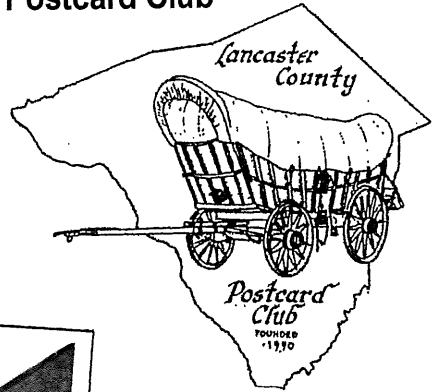
Saturday, 9 to 5

August 21, 2010

Farm & Home Center

Manheim Pike, Rte. 72

Near Rte. By-pass



## 2010 LCPC Officers

Pres. Doug Milliken

Vice Pres. Bob Zink

Secy. Gisela Withers

Treas. Barabra Mowrer

This year's Expo program cover is dedicated To Pres. Doug Milliken who collects postcards by the Detroit Publishing Company. These cards all associated with transportation.

## 2010 LCPC Directors

Tom Beck 2009-20210

Ray Dennis 2009-2010

Walter Mowrer 2009-2010

Steven Mummert 2010-2011

Dede Schaeffer 2010-2011

Shirley Summers 2010-2011



You're invited to become a member of **LCPC** – the Lancaster County Postcard Club.  
An application can be found below.

Our meetings are held the third Monday of each month from 5 to 9 PM here at the Farm & Home Center. They are open to the public. You're welcome to join us in sharing what we learn about postcards through our entertaining and educational programs and our club library. We also have friendly competitive postcard exhibits at each meeting. At least half a dozen members buy and sell postcards at all meetings except the Christmas party in December.

**Dues – Special Expo Offer**

LCPC's fiscal year is April to March. Dues are \$10 per member, \$5 for each additional member at the same address. *Sign up today for a special rate* – for 19 months, Sept. 2010 through March 2011, just \$15 (plus \$7.50 for additional member at same address).

Highlights of LCPC's year include member programs nearly every month, a June picnic, the Expo in August and our annual Christmas party. You can find us on the Internet by making a Google search: **Lancaster County Postcard Club** to learn more about our members and their favorite hobby.

**520 Postcards – 109 in Color,  
 and for just ½ the price.**

Our last hardcover book of local postcard views, published in 2002, sold originally for \$30. Today we can give you a second book **FREE!** That's two copies of **Volume Two – Windows to Our Past**, for only \$30. Pick up your books today. They make great gifts. This is a limited time offer.

Buy One. Get One  
**FREE**

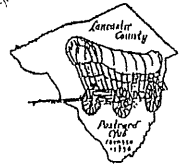
**Door Prize Certificates  
 may be used as cash  
 at any dealer's table.**

**Voting is a privilege.  
 Cast your exhibit ballot for  
 The People's Choice Award.**

DATE .....

**Post Card**

**LANCASTER COUNTY POSTCARD CLUB**



MY POSTCARD COLLECTING INTERESTS ARE .....

**APPLICATION FOR MEMBERSHIP**

.....  
 .....  
 .....  
 .....  
 .....

Published by "L. & W." Lancaster, PA

NAME .....

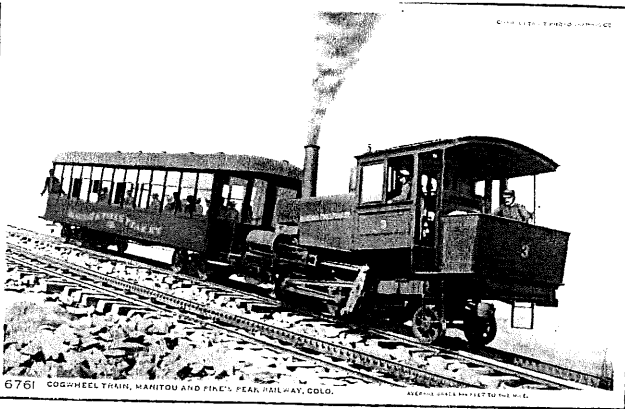
ADDRESS .....

TOWN .....

STATE ..... ZIP .....

PHONE .....

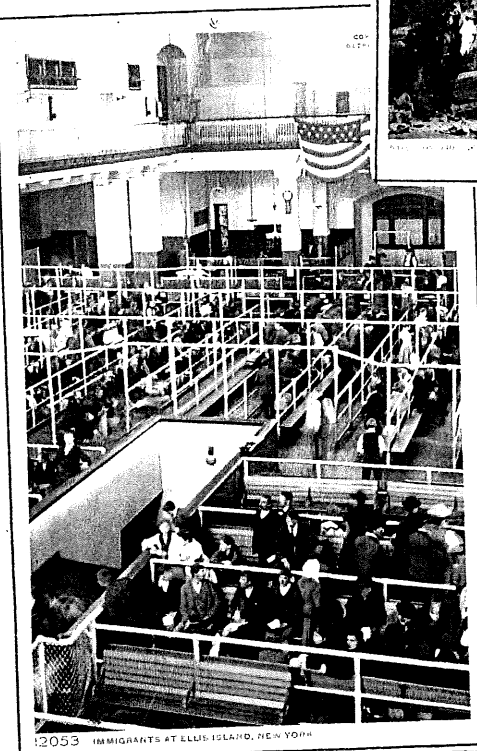
AMT. PAID ..... DATE .....



6761 COGWHEEL TRAIN, MANITOU AND PIKE'S PEAK RAILWAY, COLO.

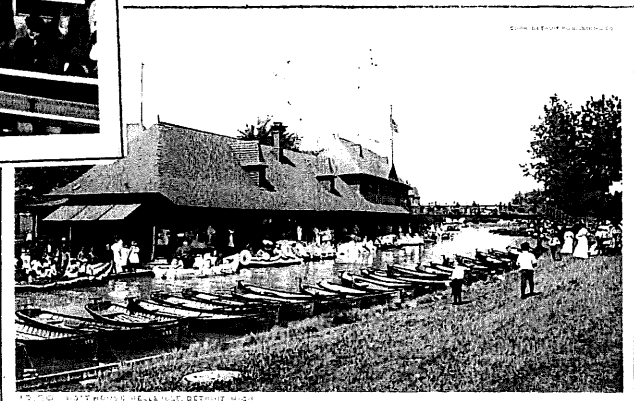


12052 APPROACH TO BROOKLYN BRIDGE, BROOKLYN, N.Y.



12053 IMMIGRANTS AT ELLIS ISLAND, NEW YORK

**Front cover cards:** Leaving Lower Station for summit, Mt. Tom Railway, Holyoke, Mass.; Rolling cars on Atlantic City Boardwalk in front of the Marlborough-Blenheim Hotel; Approach to Brooklyn Bridge, Brooklyn, NY. **Rev. cover cards:** Cogwheel Train, Manitou & Pike's Peak Railway, Colo. On the Zigzags, Bright Angel Trail, Grand Canyon of Arizona; Immigrants at Ellis Island, New York; Boat House, Belle Isle, Detroit, Mich.,



12054 BOAT HOUSE, BELLE ISLE, DETROIT, MICH.