

# 17th ANNUAL POSTCARD EXPO

Sponsored by the Lancaster County Postcard Club  
Lancaster, Pennsylvania

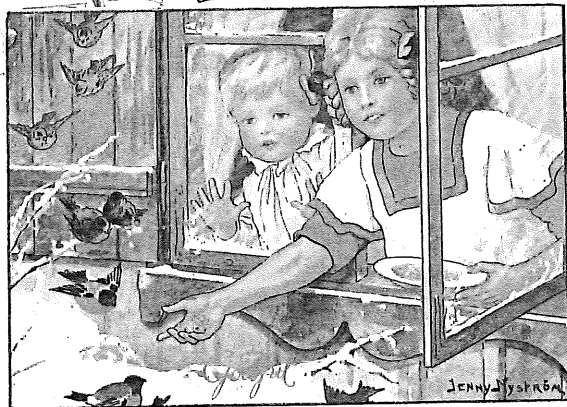
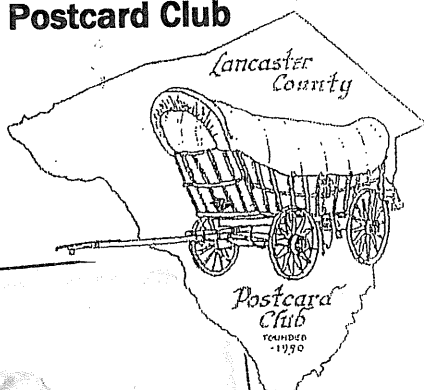
Saturday, 9 to 5

August 15, 2009

Farm & Home Center

Manheim Pike, Rte. 72

Near Rte. 30 By-pass



## 2009 LCPC Officers

Pres. Dede Schaeffer

Vice. Pres. Doug Milliken

Secy. Gisela Withers

Treas. Barabra Mowrer

This year's Expo program cover is dedicated to President Dede Schaeffer who collects, among many subjects, Children, Native Americans, Christmas, and Artist Signed cards.

## 2009 LCPC Directors

Tom Beck 2009-2010

Jim Brodt 2008-2009

Ray Dennis 2009-2010

Gwyn Fulmer 2008-2009

Bob Kramer 2008-2009

Walt Mowrer 2009-2010

# LCPC Member-Dealers at the 2009 Expo

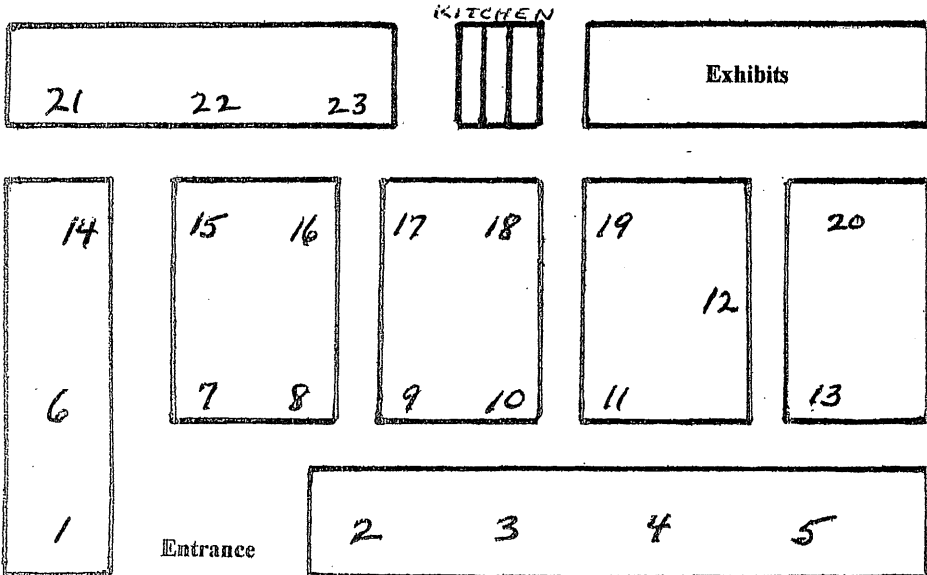
## Dealer Name, Hometown and Booth #

1 RODRIGUEZ, Jose	Cheshire, CT
2 FEIGHT, Kay	Chambersburg, PA
3 SCHAUB, Al	Lititz, PA
4 COX, Shirley	Keymar, MD
5 BIESECKER, Dale	Cashtown, PA
6 ROWE, Dolores	Kennett Square, PA
7 DISSINGER, Bob	Bainbridge, PA
8 WARD, Jim	Stevens, PA
9 GREIDER, Jere	Columbia, PA
9 STEINBERG, Howard	Quarryville, PA
10 HOLLOPETER, Bob	Punxsutawney, PA
11 STOVER, Leighton	Lititz, PA
12 WACHTER, Don	Frederick, MD
13 MORRISON, Jim	Paradise, PA
14 MIDDLETON, Mike	Denver, PA
15 SCHURZ, Marie	Denver, PA
16 SCHAEFFER, Dede	Lancaster, PA
17 ALLEN, Dan	Brookline, MA
18 SHAUB, Dale	Millersville, PA
19 DIXON, Lee	Marydel, MD
20 HELLMANN, Karl	Denver, PA
21 TIGNER, Jim	Fairfield, PA
22 EASTLAND, Jeff	Garrisonville, VA
23 CLEMENS, Mark	Greensburg, PA

## Dealers and Booth #

Allen	17
Biesecker	5
Clemens	23
Cox	4
Dissinger	7
Dixon	19
Eastland	22
Feight	2
Greider	9
Hellmann	20
Hollopeter	10
Middleton	14
Morrison	13
Rodriguez	1
Rowe	6
Schaeffer	16
Schaub	3
Schurz	15
Shaub	18
Steinberg	9
Stover	11
Tigner	21
Wachter	12
Ward	8

## Where You'll Find Them



**You're invited** to become a member of LCPC – the Lancaster County Postcard Club.  
An application can be found below.

Our meetings are held the third Monday of each month from 5:30 to 9 p.m. here at the Farm & Home Center. They are open to the public. You may join us in sharing what we learn about postcards through our entertaining and educational programs and our club library. We have competitive postcard exhibits at nearly every meeting. At least half dozen members buy and sell postcards at each meeting.

**Dues – Special Expo Offer**

LCPC's fiscal year is April to March for which we charge \$10. *Sign up at the Expo for a special rate of \$15 and \$7.50 for ea. additional member at the same address. This pays your dues for 19 months - from Sept. 2009 through March 2011.*

Our illustrated monthly publication, *The Card*, includes club news, local postcard history and articles covering general postcard collecting. Ask for a free copy.

Highlights of LCPC's year include member programs nearly every month, a June picnic, our Annual Expo in August, and our annual Christmas party.

You can find us on the Internet. Make a Google search: **Lancaster County Postcard Club** to learn more about our members and their favorite hobby.

**520 Postcards – 109 in Color,  
 and for just ½ the price.**

Our club will soon be celebrating its 20<sup>th</sup> birthday. As a gift to you, we are offering – for a limited time – our last hardcover book of local postcard views for the original price of \$30 and we give you a second book FREE! That's two copies of *Volume Two - Windows to Our Past*, for only \$30. Pick up your books today. They make great gifts. Remember this offer is for a limited time!

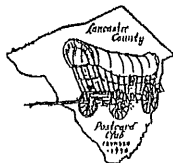
Buy One Get One  
**FREE**

**Voting is a privilege.  
 Cast your exhibit ballot for  
 The People's Choice Award.**

**Door Prize Certificates  
 may be used as cash  
 at any dealer's table.**

DATE .....

**Post Card**



**LANCASTER COUNTY POSTCARD CLUB**

MY POSTCARD COLLECTING  
 INTERESTS ARE .....

**APPLICATION FOR MEMBERSHIP**

.....  
 .....  
 .....  
 .....  
 .....  
 .....  
 AMT. PAID ..... DATE.....  
 ACCEPTED BY .....

Published by "L & W" Lancaster, PA

NAME .....

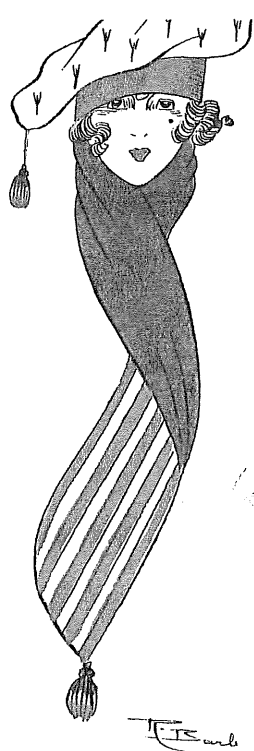
ADDRESS .....

TOWN .....

STATE ..... ZIP .....

PHONE .....

SPONSOR .....



J. E. Carl



Nora Annie Birch

**B** BEEN LOOKING FOR NEWS OF YOU!



GOSSES D'ALSACE

HANSI

HANSI : On attend le "Chénéral". (D'après l'estampe.)  
Waiting for the "Cheneral". (From the engraving.)

**Front cover cards:** Big sister shows her new Golliwog to the baby on a John Winsch card; songbirds fly in for their Christmas breakfast by Jenny Nyström A Navaho by Gerald Cassidy on a Fred Harvey card. **Rev. cards, top to bottom, left to right:** René Barbier's girl in a patriotic scarf; Harrison Fisher's "All Mine"; co-ed by Pearle Eugenia Fidler; sobbing child and her dog by Nora Annie Birch; WWI French children by Hansi.