

Welcome to the

15th ANNUAL POSTCARD EXPO

Sponsored by the Lancaster County Postcard Club

Lancaster, Pennsylvania

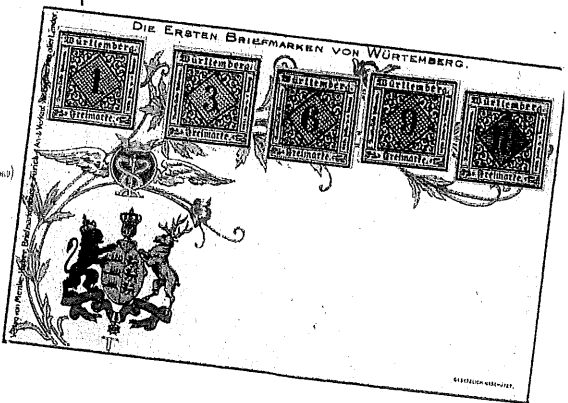
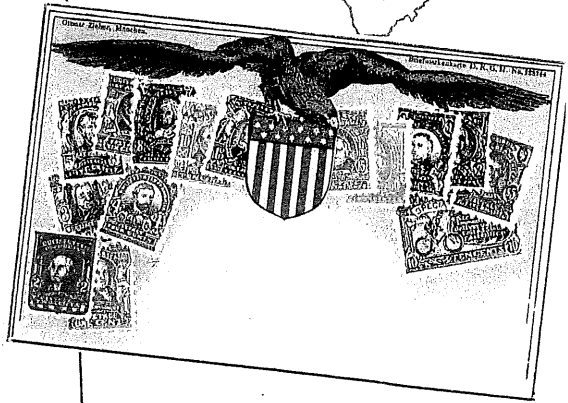
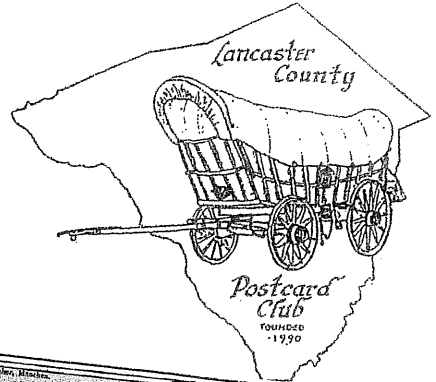
Saturday, 9 to 5

August 18, 2007

Farm & Home Center

Manheim Pike, Rte. 72

Near Rte. 30 By-pass



2007 LCPC Officers

Pres. Al Schaub

Vice. Pres. Jere Greider

Secy. Gisela Withers

Treas. Barabra Mowrer

This year's Expo program cover is dedicated to President Al Schaub who collects postcards, postage stamps, cancellations and postal history.

2007 LCPC Directors

Betty Beck 2007-2008

Bryan Benner 2006-2007

Sharon Gromis 2006-2007

Joe Myers 2007-2008

Dick Pendergrast 2007-2008

Jim Ward 2006-2007

LCPC Member -Dealers at 2007 Expo

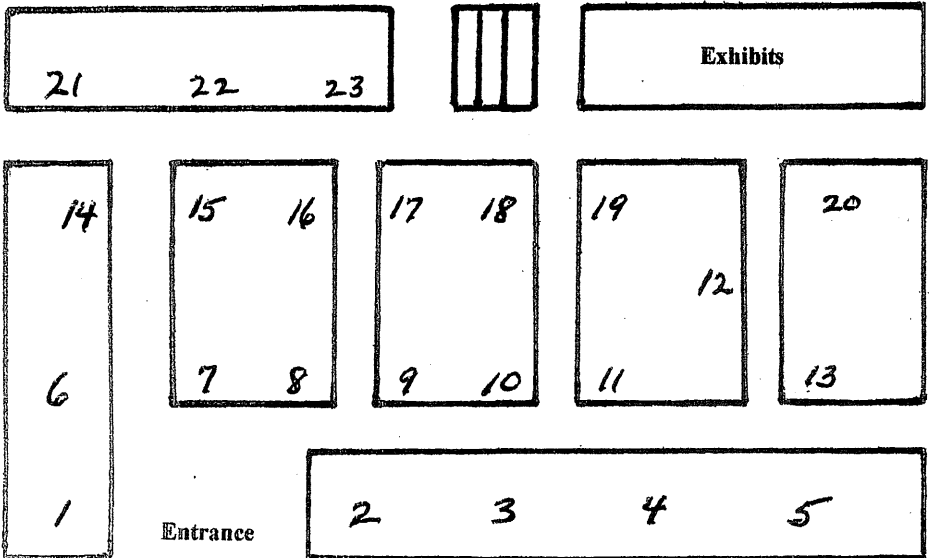
Dealer Name, Hometown and Booth

1 RODRIGUEZ, Jose	Cheshire, CT
2 FEIGHT, Kay	Chambersburg, PA
3 SCHAUB, Al	Lititz, PA
3 SHAUB, Dale	Millersville, PA
4 COX, Shirley	Keymar, MD
5 GOTTLIEB, Marilyn	Plantation, FL
6 ROWE, Dolores	Kennett Square, PA
7 DISSINGER, Bob	Bainbridge, PA
8 WARD, Jim	Stevens, PA
9 GREIDER, Jere	Columbia, PA
9 STEINBERG, Howard	Quarryville, PA
10 HOLLOPETER, Bob	Punxsutawney, PA
11 STOVER, Leighton	Lititz, PA
12 WACHTER, Don	Frederick, MD
13 MORRISON, Jim	Paradise, PA
14 MIDDLETON, Mike	Lancaster, PA
15 SCHURZ, Maria	Denver, PA
16 SCHAEFFER, Dede	Lancaster, PA
17 BIESECKER, Dale	Cashtown, PA
18 BERNARD, Al	Dallastown, PA
19 DIXON, Lee	Marydel, MD
20 TROVEI, Barbara	Port Jervis, NY
21 TIGNER, Jim	Fairfield, PA
22 KNAPP, Paul	Olmsted Falls, OH
23 CLEMENS, Mark	Greensburg, PA

Dealers and Booth

Bernard, Al	18
Biesecker, Dale	17
Clemens, Mark	23
Cox, Shirley	4
Dissinger, Bob	7
Dixon, Lee	19
Feight, Kay	2
Gottlieb, Marilyn	5
Greider, Jere	9
Hollopeter, Bob	10
Knapp, Paul	22
Middleton, Mike	14
Morrison, Jim	13
Rodriguez, Jose	1
Rowe, Dolores	6
Schaeffer, Dede	16
Schaub, Al	3
Schurz, Maria	15
Schaub, Dale	3
Steinberg, Howard	9
Stover, Leighton	11
Tigner, Jim	21
Trovei, Barbara	20
Wachter, Don	12
Ward, Jim	8

Where You'll Find Them



You're invited to become a member of LCPC – the Lancaster County Postcard Club.

An application can be found below.

Our meetings are held the third Monday of each month from 5:30 to 9 p.m. here at the Farm & Home Center. They are open to the public. You may join us in sharing what we learn about postcards through our entertaining and educational programs and our club library. We have competitive postcard exhibits at nearly every meeting.

Dues – Special Expo Offer

LCPC's fiscal year is April to March for which we charge \$10. *Sign up at the Expo for a special rate of \$15 and \$7.50 for ea. additional member at the same address. This pays your dues for 19 months - from Sept. 2007 through March 2009.*

Our illustrated monthly publication, *The Card*, includes club news, local postcard history and articles covering general postcard collecting. Ask for a free copy.

Highlights of LCPC's year include member programs nearly every month, a June picnic, our Annual Expo in August, a postcard auction in the fall and our annual Christmas party.

The only Postcard Club published books of their kind.

In 1998 our club published a hard cover deluxe edition book of 500 local postcard views with descriptions and values. *Windows to Our Past*, we've learned, is the first book of its size and substance to be published by a postcard club. The edition of 2,000 copies was sold out in the first twelve months. Copies are now selling at a premium.

In 2002 LCPC took up the venture once more. *Windows to Our Past, Volume Two* includes 520 different views from *Volume One* and we increased the color plates from 49 to 109 while still holding the price at \$30! **Volume Two is available today.** Relatives and friends who've moved from Lancaster are sure to enjoy the nostalgia conjured up by these old postcard views. They make wonderful birthday and holiday gifts.

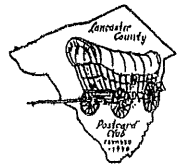
**Voting is a privilege.
Cast your exhibit ballot for
The People's Choice Award.**

**Door Prize Certificates
may be used as cash
at any dealer's table.**

DATE

Post Card

LANCASTER COUNTY POSTCARD CLUB



MY POSTCARD COLLECTING INTERESTS ARE

APPLICATION FOR MEMBERSHIP

.....
.....
.....
.....
.....
.....
.....
.....
AMT. PAID.....DATE.....
ACCEPTED BY

Published by "L & W" Lancaster, PA

NAME

ADDRESS

TOWN

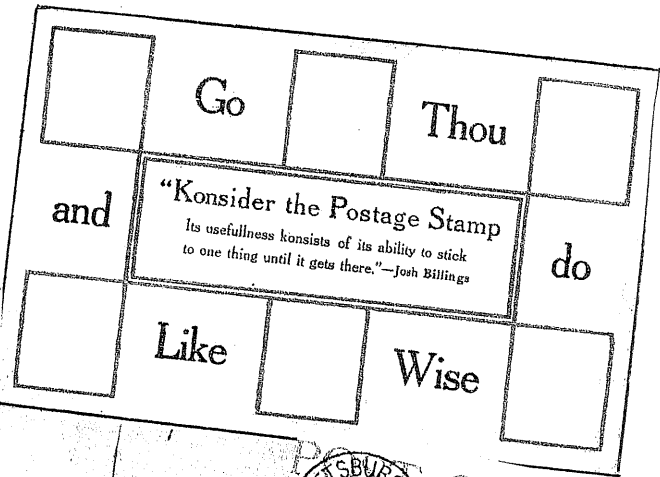
STATE ZIP

PHONE

SPONSOR

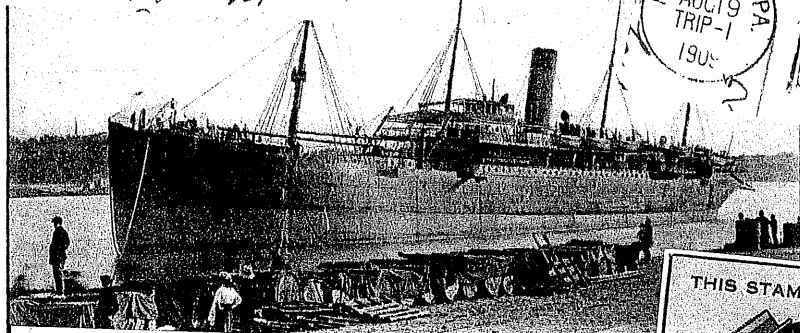


50
AIR D

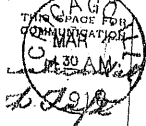


“Konsider the Postage Stamp
Its usefulness konsists of its ability to stick
to one thing until it gets there.”—Josh Billings

unfilled light



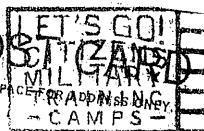
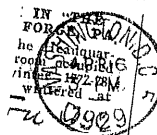
Post Card



ADDRESS

Food
will
win the war
don't waste it!

la Cie de Navigation Sud-Atlantique



THE AMERICAN RED CROSS

Descriptions of front cover postcards: USA entry to mail series by E. F. Editeurs, Paris; 1902-3 series of nation stamps by Ottmar Zieher, München; Württemberg stamps by Menke-Hüber, Zürich. **Items on back cover:** Postcards – August Hutaf comic “Filosophy” of Josh Billings; Packet-boat (carried mail) “Samara” on So. Atlantic, #180A by Fr. publisher, M. D.; Valentine Bros.’ comic contribution to British National Health Insurance. **Cancellations on PCs, top to bottom** – Posted on board Swedish American Line (24/6/67) with ship cancel; Jack(sonville). & Key West Railway P. O.; Pittsburg trolley R.P.O.; 1918 WWI patriotic cancel; 1929 Citizens Military Training Camps cancel; Red Cross free Military Post Office Soldiers Mail cancel with printed message “The ship on which I sailed has arrived safely overseas.”