

Welcome to the

12th ANNUAL POSTCARD EXPO

Sponsored by the Lancaster County Postcard Club

Lancaster, Pennsylvania

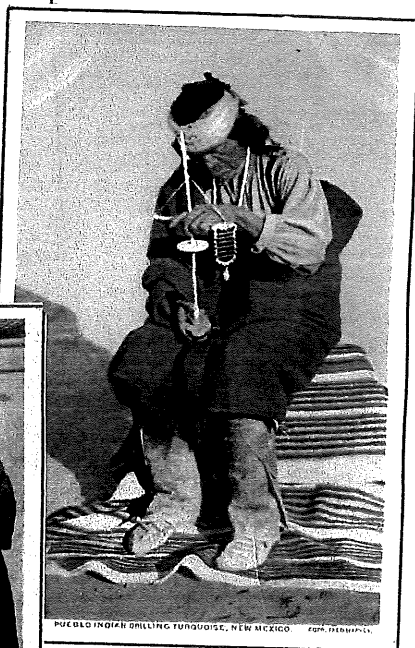
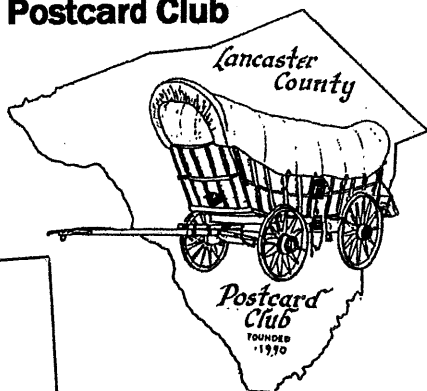
Saturday, 9 to 5

August 21, 2004

Farm & Home Center

Manheim Pike, Rte. 72

Near Rte. 30 By-pass



This year's Expo program cover is dedicated to President Doug Milliken who collects postcards by the Detroit Publishing Company.

2004 LCPC Officers

Pres. Doug Milliken

Vice. Pres. Sharon Gromis

Secy. Gisela Withers

Treas. Barabra Mowrer

2004 LCPC Directors

Carol Dennis

Ray Dennis

Harold Moyer

Ruth Moyer

Dede Schaeffer

Jim Ward

LCPC Member -Dealers at 2004 Expo

Alphabetical Listing

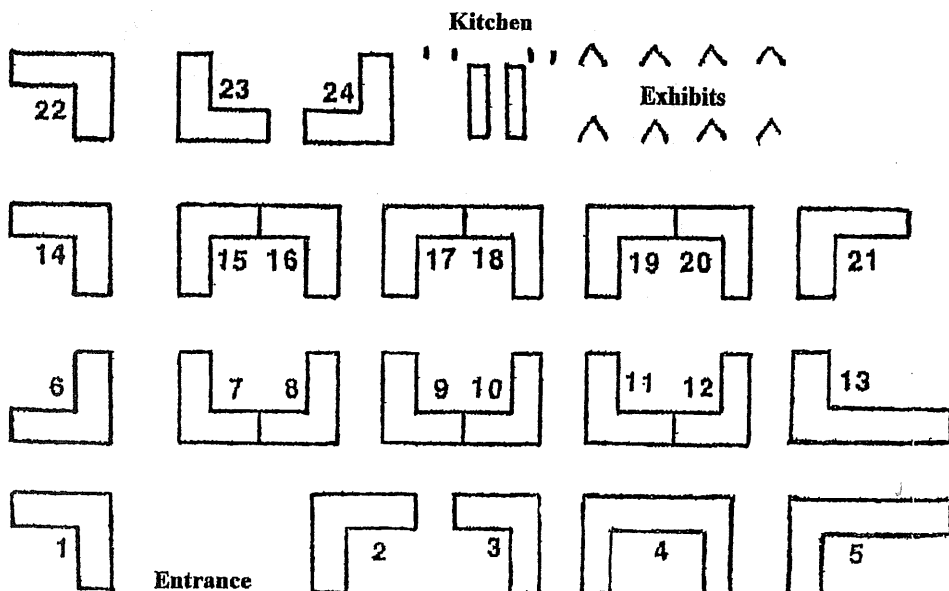
- 17 BIESECKER, Dale and Gretchen
- 20 BISHOP, Dick
- 4 COX, Shirley
- 8 DISSINGER, Bob
- 7 DIXON, Lee
- 2 FEIGHT, Doris Kay
- 19 FRIDIE, Mimi
- 5 GOTTLIEB, Marilyn and Howie
- 9 GREIDER, Jere
- 10 HOLLOPETER, Bob
- 14 MIDDLETON, Mike
- 13 MORRISON, Jim
- 24 NEIS, Steve
- 18 NEWSOME, Bob and Arden
- 1 RODRIGUEZ, Jose and Aida
- 6 ROWE, Dolores and Leon
- 16 SCHAEFFER, Dede
- 3 SCHAUB, Al
- 15 SCHURZ, Maria and Win
- 3 SHAUB, Dale
- 9 STEINBERG, Howard
- 11 STOVER, Leighton
- 23 TIGNER, James
- 21 TROVEI, Barbara
- 12 WACHTER, Don
- 8 WARD, Jim
- 22 WHITE, Ernie

- Cashtown, PA
- York, PA
- Keymar, MD
- Falmouth, PA
- Marydel, MD
- Chambersburg, PA
- Jackson, NJ
- Rock Hill, NY
- Mountville, PA
- Punxsutawney, PA
- New Holland, PA
- Georgetown, MD
- Columbia, SC
- Stroudsburg, PA
- Cheshire, CT
- Kennett Square, PA
- Lancaster, PA
- Lititz, PA
- Denver, PA
- Lancaster, PA
- Quarryville, PA
- Lititz, PA
- Fairfield, PA
- Port Jervis, NY
- Frederick, MD
- Stevens, PA
- Richmond, VA

Numerical Listing

- 1 Rodriguez, Jose
- 2 Feight, Doris Kay
- 3 Schaub, Al
- 3 Schaub, Dale
- 4 Cox, Shirley
- 5 Gottlieb, Marilyn
- 6 Rowe, Dolores
- 7 Dixon, Lee
- 8 Dissinger, Bob
- 8 Ward, Jim
- 9 Greider, Jere
- 9 Steinberg, Howard
- 10 Hollopeter, Bob
- 11 Stover, Leighton
- 12 Wachter, Don
- 13 Morrison, Jim
- 14 Middleton, Mike
- 15 Schurz, Maria
- 16 Schaeffer, Dede
- 17 Biesecker, Dale
- 18 Newsome, Bob
- 19 Fridie, Mimi
- 20 Bishop, Dick
- 21 Trovei, Barbara
- 22 White, Ernie
- 23 Tigner, James
- 24 Neis, Steve

Where You'll Find Them



You're invited to become a member of LCPC – the Lancaster County Postcard Club.

An application can be found on the back of this program.

Our meetings are held the third Monday of each month from 5:30 to 9 p.m. here at the Farm & Home Center. They are open to the public. You may join us in sharing what we learn about postcards through our entertaining and educational programs and our club library. We have competitive postcard exhibits at nearly every meeting.

Dues – Special Expo Offer

LCPC's fiscal year is April to March for which we charge \$10. *Sign up at the Expo for a special rate of \$15 and \$7.50 for ea. additional member at the same address. This pays your dues for 19 months - from Sept. 2004 through March 2006.*

Our illustrated monthly publication, *The Card*, includes club news, local postcard history and articles covering general postcard collecting. Ask for a free copy.

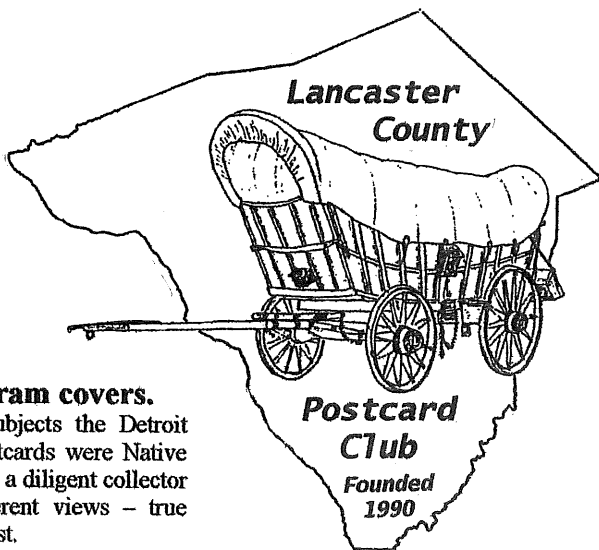
Highlights of LCPC's year include publishing a National Postcard Week card in spring, a picnic and our Annual Expo in summer, a postcard auction in the fall and our annual Christmas party.

The only Postcard Club published books of their kind.

In 1998 our club published a hard cover deluxe edition book of 500 local postcard views with descriptions and values. *Windows to Our Past*, we've learned, is the first book of its size and substance to be published by a postcard club. The edition of 2,000 copies was sold out in less than a year. Copies are now selling at a premium.

In 2002 LCPC took up the venture once more. *Windows to Our Past, Volume Two* includes 520 different views from *Volume One* and we increased the color plates from 49 to 109 while still holding the price at \$30! Volume Two is available today. Relatives and friends who've moved from Lancaster will certainly enjoy the nostalgia conjured up by these old postcard views. They make wonderful birthday and Christmas gifts.

**Voting is a privilege.
Cast your exhibit ballot for
The People's Choice Award.**



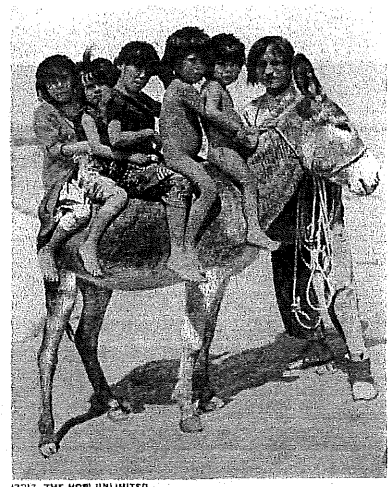
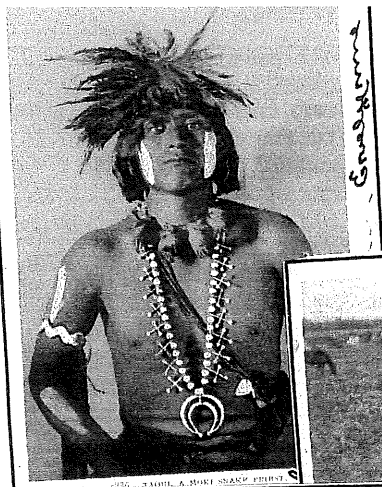
Postcards on our program covers.

Some of the earliest subjects the Detroit Publishing Company used on postcards were Native Americans. With some persistence, a diligent collector might uncover hundreds of different views – true presentations of life in the early west.

Front Cover: #5887 A Hopi (Moki) Basket Weaver; #11157 Irene Rock (with horse), Assinaboine; #13989 Pueblo Indian Drilling Turquoise, New Mexico.

Back Cover: #5886 Taqui, A Moki Snake Priest. This card was mailed from Cimarron, NM in Jan. 1905 to Washington County, PA.; #12217 The Hopi Unlimited; #11359 A Young Cree Indian; #6880 A Proud Mother; #5510 A Navajo Blanket Weaver.

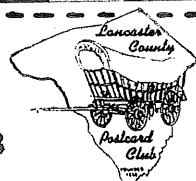
**Door Prize Certificates
may be used as cash
at any dealer's table.**



DATE

Post Card

LANCASTER COUNTY POSTCARD CLUB



MY POSTCARD COLLECTING INTERESTS ARE

APPLICATION FOR MEMBERSHIP

.....

NAME

ADDRESS

TOWN

STATE ZIP

AMT. PAID.....DATE.....

PHONE

ACCEPTED BY