

Welcome to the

11th ANNUAL POSTCARD EXPO

Sponsored by the Lancaster County Postcard Club

Lancaster, Pennsylvania

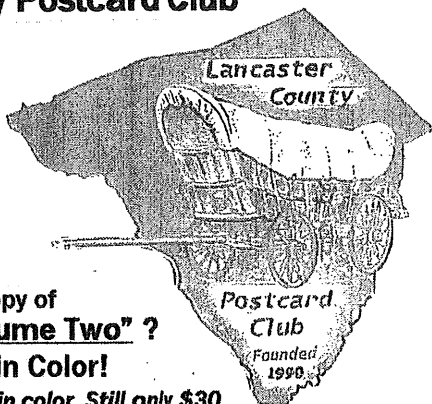
Saturday, 9 to 5

August 16, 2003

Farm & Home Center

Manheim Pike, Rte. 72

Near Rte. 30 By-pass

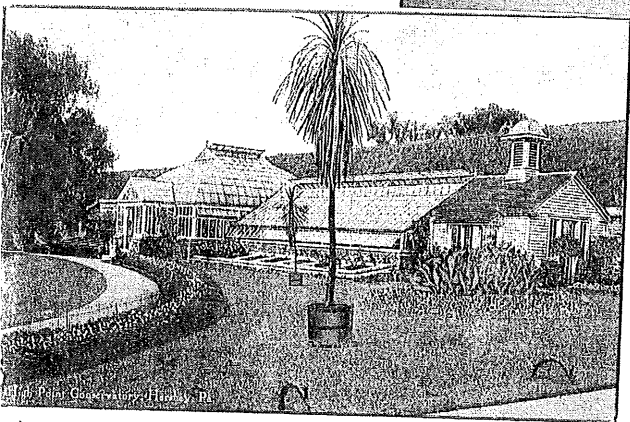
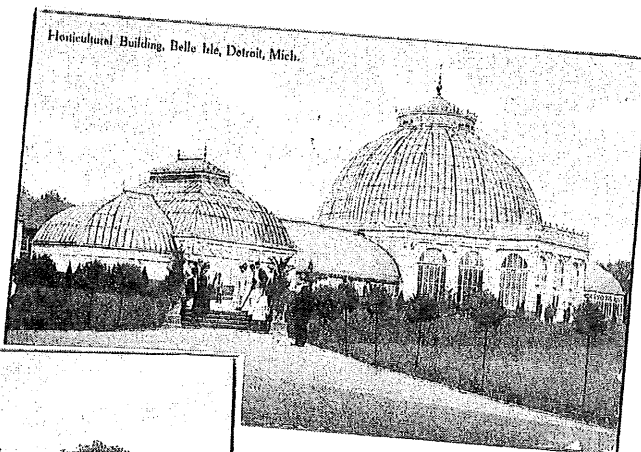


Have you gotten your copy of
"Windows Our Past - Volume Two" ?

520 Local Views - 109 in Color!

20 more views than Vol. One and 50 more in color. Still only \$30.

Unique Gifts for Birthdays and Holidays.



This year's Expo cover is dedicated to Pres. Bryan Benner. He has a collection of botanical conservatories. *Locations on back cover.*

2003 LCPC Officers
Pres. Bryan Benner
Vice. Pres. Doug Milliken
Secy. Gisela Withers
Treas. Barabra Mowrer

2003 LCPC Directors
Dede Schaeffer 2003
Carol Dennis 2003
Ray Dennis 2003
Dale Shaub 2003-2004
Mark Arbogast 2003-2004
Jim Ward 2003-2004

LCPC Member – Dealers

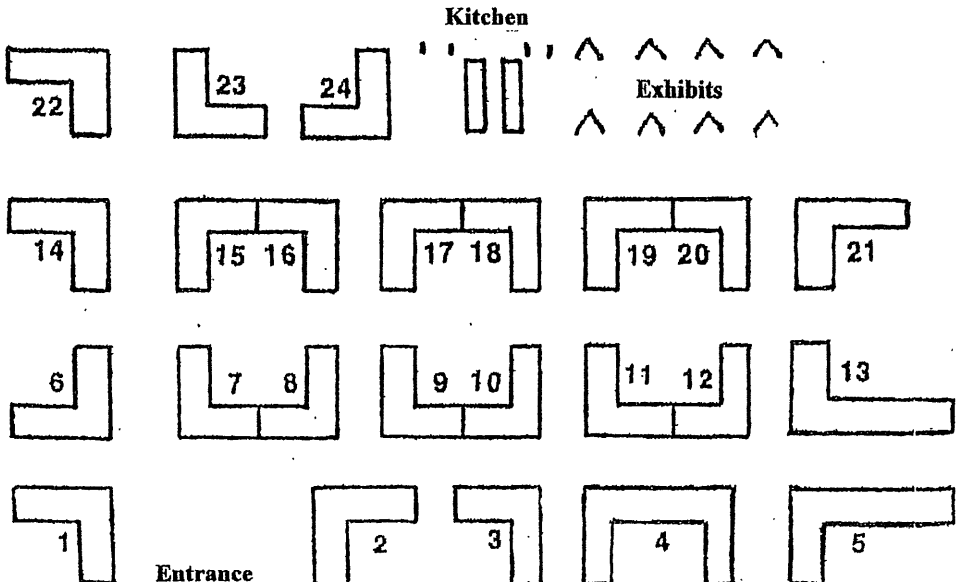
Alphabetical Listing

- 17 BIESECKER, Dale and Gretchen
- 20 BISHOP, Dick
- 23 CAVALARI, Agnes
- 4 COX, Shirley
- 5 GOTTLIEB, Marilyn and Howie
- 2 GRAY, Harris and Jayne
- 9 GREIDER, Jere
- 10 HARTMAN, Reuel
- 3 MCKINZIE, Gordon
- 14 MIDDLETON, Mike
- 7 MILLER, Jay
- 13 MORRISON, Jim
- 24 NEIS, Steve
- 18 NEWSOME, Arden and Bob
- 1 RODRIGUEZ, Jose and Aida
- 6 ROWE, Dolores and Leon
- 22 WHITE, Ernie
- 16 SCHAEFFER, Dede
- 15 SCHURZ, Maria and Win
- 9 STEINBERG, Howard
- 11 STOVER, Leighton
- 21 TROVEI, Barbara
- 12 WACHTER, Don
- 8 WARD, Jim
- 19 WOLFERSBERGER, Bill

Numerical Listing

- 1 Jose Rodriguez
- 2 Harris Gray
- 3 Gordon McKinzie
- 4 Shirley Cox
- 5 Marilyn Gottlieb
- 6 Dolores Rowe
- 7 Jay Miller
- 8 Jim Ward
- 9 Jere Greider
- 9 Howard Steinberg
- 10 Reuel Hartman
- 11 Leighton Stover
- 12 Don Wachter
- 13 Jim Morrison
- 14 Mike Middleton
- 15 Maria Schurz
- 16 Dede Schaeffer
- 17 Dale Biesecker
- 18 Arden Newsome
- 19 Bill Wolfersberger
- 20 Dick Bishop
- 21 Barbara Trovei
- 22 Chris Russell
- 23 Agnes Cavalari
- 24 Steve Neis

Where You'll Find Them



You're invited to become a member of LCPC – the Lancaster County Postcard Club.

An application can be found on the back of this program.

Our meetings are held the third Monday of each month from 5:30 to 9 p.m. here at the Farm & Home Center. They are open to the public. You may join us in sharing what we learn about postcards through our entertaining and educational programs and our club library. We have competitive postcard exhibits at nearly every meeting.

Dues – Special Expo Offer

LCPC's fiscal year is April to March for which we charge \$10. Sign up at the Expo for a special rate of \$15. It pays your dues from Aug. 2003 through March 2005.

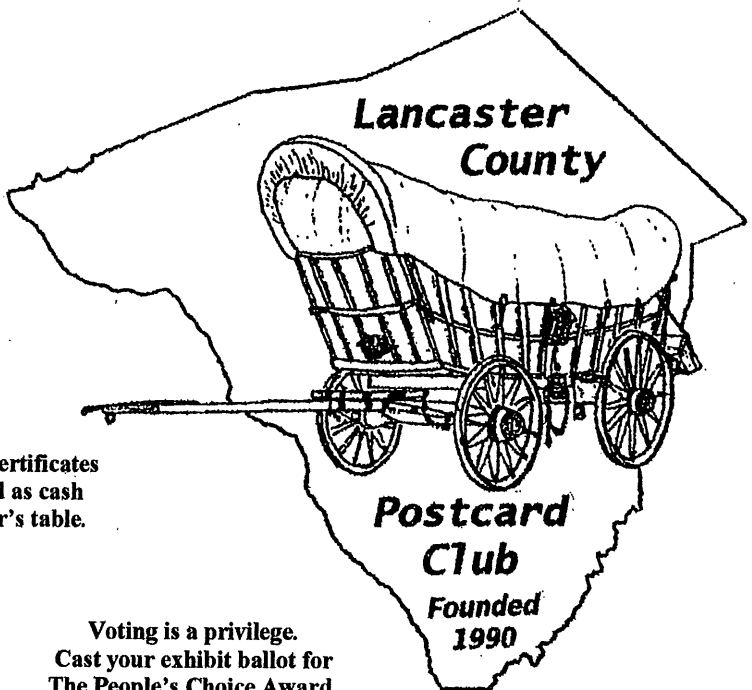
Our monthly Publication, *The Card*, includes club news, local postcard history and articles covering postcard collecting in general. Ask for a complimentary copy

Highlights of the year include publishing a National Postcard Week card in spring, a picnic and our Annual Expo in summer, a postcard auction in the fall and our annual Christmas party.

The only postcard club published books of their kind.

In 1998 our club published a hard cover deluxe edition book of 500 local postcard views with descriptions and values. *Windows to Our Past*, we've learned, is the first book of its size and substance to be published by a postcard club. The edition of 2,000 copies is sold out. Copies are now selling at a premium.

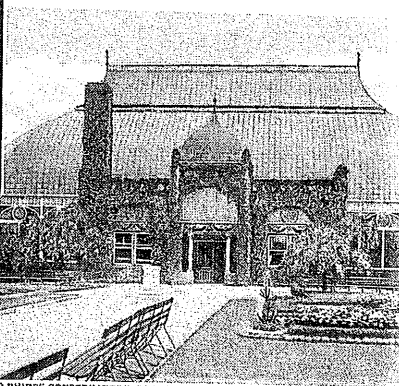
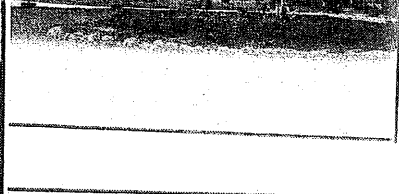
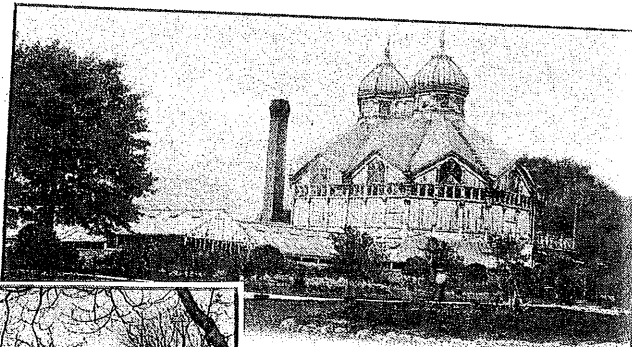
Last year LCPC took up the venture once more. *Windows to Our Past, Volume Two*, made its debut at our 2002 Expo. It includes 520 different views from *Volume One* and we increased the color plates from 49 to 109 while holding the price at \$30! As much sought after as *Volume One* is, you might consider getting your extra copies of *Volume Two* today. Relatives and friends who've moved from Lancaster will certainly enjoy the nostalgia conjured up by these old postcard views. The books make wonderful gifts.



Door Prize Certificates
may be used as cash
at any dealer's table.

Voting is a privilege.
Cast your exhibit ballot for
The People's Choice Award.

Back Cover, top to bottom:
 Humboldt Park, Chicago, IL
 Wright Park, Tacoma, WA
 Schenley Park, Pittsburgh, PA
 Front cover, top to bottom:
 Belle Isle, Detroit, MI
 Hershey Park, Hershey, PA

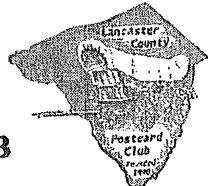


ENTRANCE TO PHIPPS CONSERVATORY, SCHENLEY PARK, PITTSBURGH, PA.

DATE

Post Card

LANCASTER COUNTY POSTCARD CLUB



MY POSTCARD COLLECTING INTERESTS ARE

APPLICATION FOR MEMBERSHIP

.....

 AMT. PAID.....DATE.....
 ACCEPTED BY

Published by "L & W", Lancaster, PA

NAME

ADDRESS

TOWN

STATEZIP

PHONE

SPONSOR