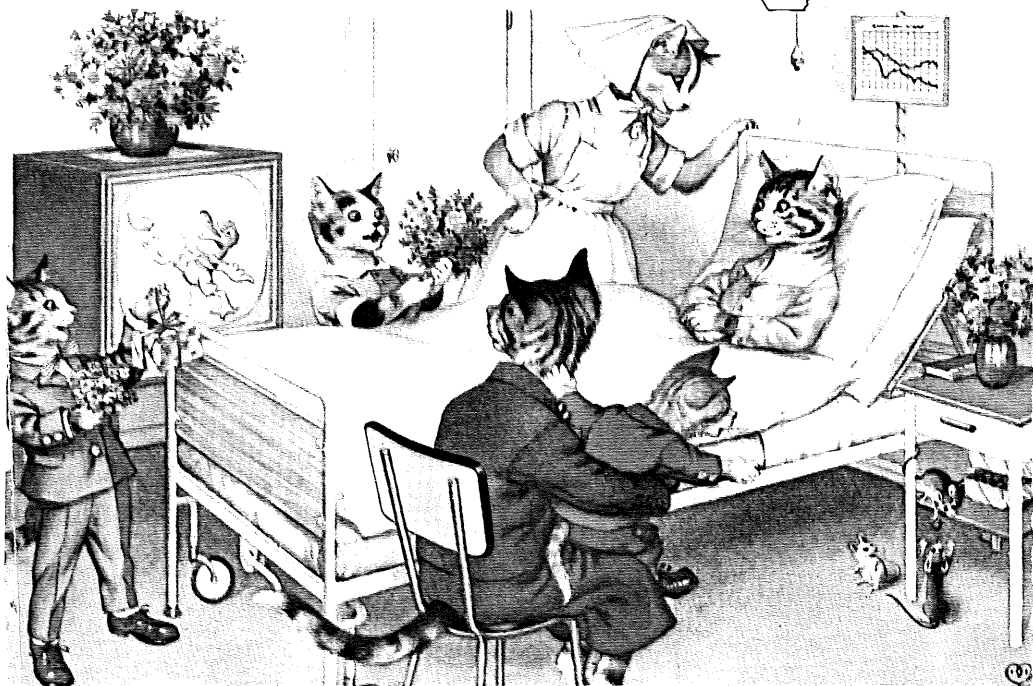
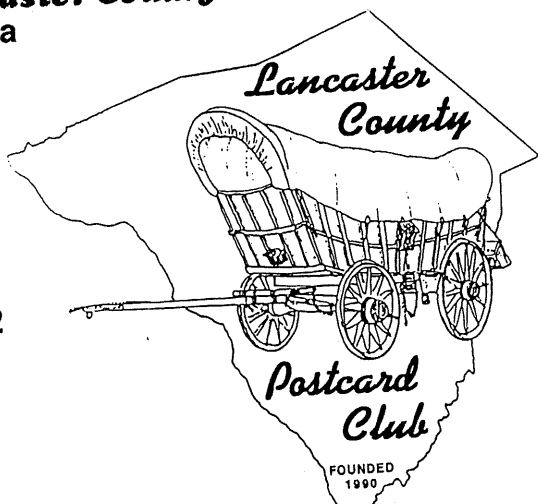


Welcome to the
7th ANNUAL POSTCARD EXPO

sponsored by the Lancaster County Postcard Club
Lancaster, Pennsylvania

Saturday
August 21, 1999
9 AM to 6 PM

FARM & HOME CENTER
Manheim Pike, Rte. #72
near Rte. #30 By-pass.



LCPC OFFICERS
Pres. Susan Glass
Vice Pres. Walter Mowrer
Secy. Mary Ann Guntow
Treas. Barabra Mowrer

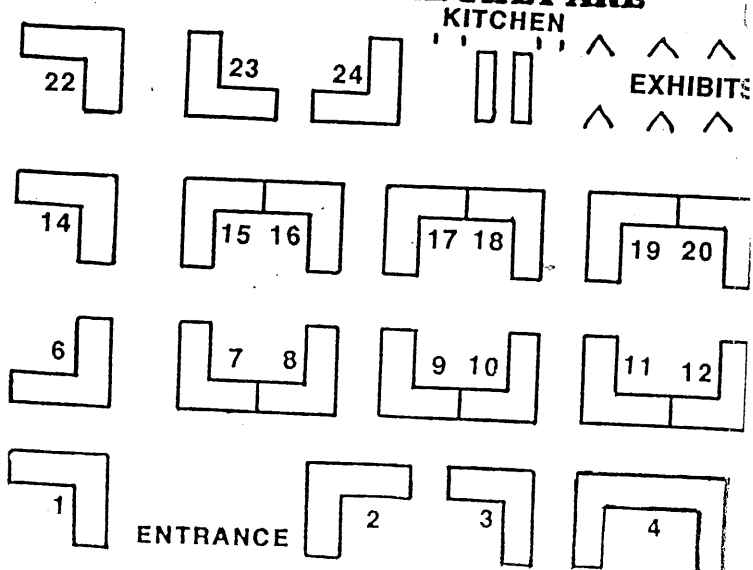
LCPC DIRECTORS
Sally Danz
Don Davis
Bill Guntow
Ruth and Harold Moyer
Norman Zimmerman

LCPC MEMBER-

Alphabetical Listing

23	CAVALARI, Agnes	New Windsor, NY
4	COX, Lee and Shirley	Keymar, MD
14	COX, Helen	Baltimore, MD
24	FRANTZ, Leo and Helma	Etters, PA
5	GOTTLIEB, Marilyn and Howie	Rock Hill, NY
2	GRAY, Harris and Jayne	Brookfield, MA
9	GREIDER, Jere	Mountville, Pa.
10	HARTMAN, Reuel and Mary	Bloomsburg, PA
20	KOLB, Ken and Ginny	Wilmington, DE
16	KUREY, Bob and Mary	Johnson City, NY
17	LUTY, Jim	Dillsburg, PA
7	MILLER, Jay	Philadelphia, PA
13	MORRISON, Jim	Georgetown, MD
18	NEWSOME, Arden and Bob	Stroudsburg, PA
1	RODRIGUEZ, Jose and Aida	Cheshire, CT
6	ROWE, Dolores and Leon	Kennett Square, PA
22	RUSSELL, Chris and Pam	Winchester, NH
3	SCHAEFFER, Dede and Daisy	Lancaster, PA
15	SCHURZ, Maria and Win	Denver, PA
9	STEINBERG, Howard	Quarryville, PA
21	TROVEI, Barbara	Port Jervis, NY
12	WACHTER, Don	Frederick, MD
8	WARD, Jim	Stevens, PA
11	WILLIAMS, Dave and Trudy	Milford, CT
19	WOLFERSBERGER, Bill	Winchester, VA

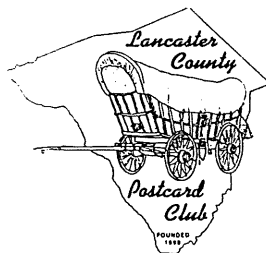
WHERE THEY ARE



DEALERS

Numerical Listing

- 1 Jose Rodriguez
- 2 Harris Gray
- 3 Dede Schaeffer
- 4 Lee Cox
- 5 Marilyn Gottlieb
- 6 Dolores Rowe
- 7 Jay Miller
- 8 Jim Ward
- 9 Jere Greider
- 9 Howard Steinberg
- 10 Reuel Hartman
- 11 Dave Williams
- 12 Don Wachter
- 13 Jim Morrison
- 14 Helen Cox
- 15 Maria Schurz
- 16 Bob Kurey
- 17 Jim Luty
- 18 Arden Newsome
- 19 Bill Wolfersberger
- 20 Ken Kolb
- 21 Barbara Trovei
- 22 Chris Russell
- 23 Agnes Cavalarì
- 24 Leo Frantz



You're invited

to become a member of LCPC - the Lancaster County Postcard Club.

Our monthly meetings are open to the public. You may join us in sharing what we learn about postcards through our extensive library, educational programs and exhibits. We have postcard competition and auctions on a regular basis, a summer picnic meeting and Christmas dinner party.

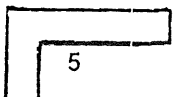
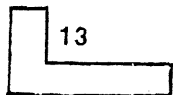
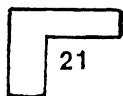
Each year LCPC issues a unique PC* honoring National Postcard Week, the first full week in May.

Each month members receive an 8-page illustrated bulletin, **THE CARD**, which keeps them informed if they can't attend meetings. It offers local postcard history and general knowledge about our hobby. Look for a complimentary copy at the Club Table.

In 1998 LCPC published a book of Lancaster City and County postcards - Windows to Our Past. It contains 500 local views with narrative and scarcity rating for each card. The deluxe hardcover volume includes a color section and makes a handsome gift for a friend or relative. Only 2,000 books were printed. The few remaining will be available at the Club Table or possibly from members.

*Postcard is written as one word or two words - both are correct.

Our cover postcard of the Mainzer cats is dedicated to LCPC Pres. Susan Glass who is a nurse and who collects cats on PCs.



YOU ARE INVITED TO JOIN THE Lancaster County Postcard Club

Meets Third Monday Each Month
Farm & Home Center

Rte. #72 (Manheim Pike) near Rte.#30.

Buy-Sell-Trade from 5:30 PM. Meeting begins at 7 PM.

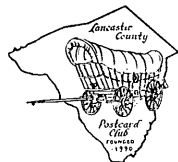
EXPO SPECIAL

You can join the LANCASTER COUNTY POSTCARD CLUB (LCPC) NOW for the special EXPO MEMBERSHIP PRICE of \$12 which will include membership to March 2001. (\$2 extra for each member at same address.) Yearly membership (April to March) is \$8. Membership includes use of the extensive club library, participation in club auctions and programs, buying and selling at meetings and all other privileges including a monthly subscription to **THE CARD**, the club's 8-page illustrated publication. Pick up a free copy of **THE CARD** at the Registration Desk. You'll receive a copy each month even if you can't get to our meetings.

DATE

Post Card

LANCASTER COUNTY POSTCARD CLUB



MY POSTCARD COLLECTING
INTERESTS ARE

APPLICATION FOR MEMBERSHIP

.....

 AMT. PAID.....DATE.....
 ACCEPTED BY

Published by "L & W", Lancaster, PA

NAME

ADDRESS

TOWN

STATE ZIP

PHONE

SPONSOR