

Welcome to the

6th ANNUAL POSTCARD EXPO

sponsored by the Lancaster County Postcard Club
Lancaster, Pennsylvania

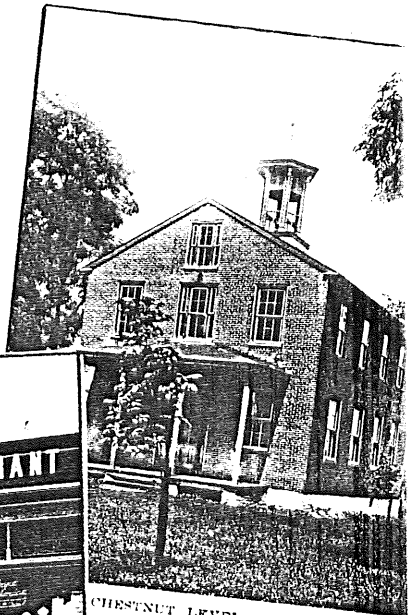
Saturday

August 15, 1998

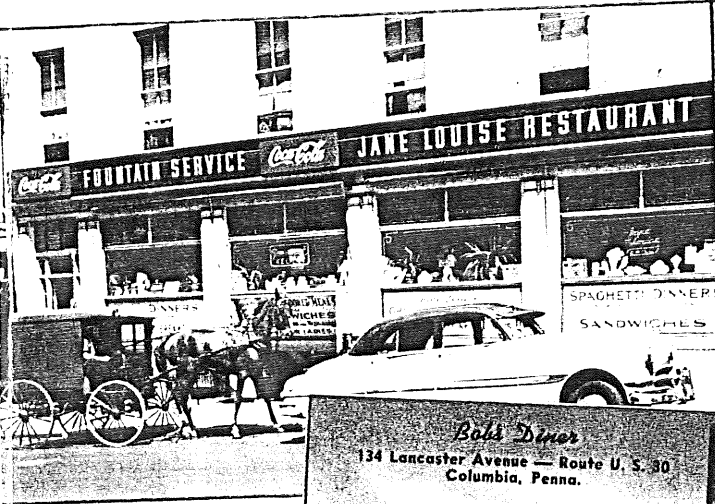
9 am to 6 pm

FARM & HOME CENTER

Rte.#72, Manheim Pike



CHESTNUT LEVEL ACADEMY
(Lancaster County, Pa.)



LANCASTER COUNTY POSTCARDS

- Windows To Our Past -

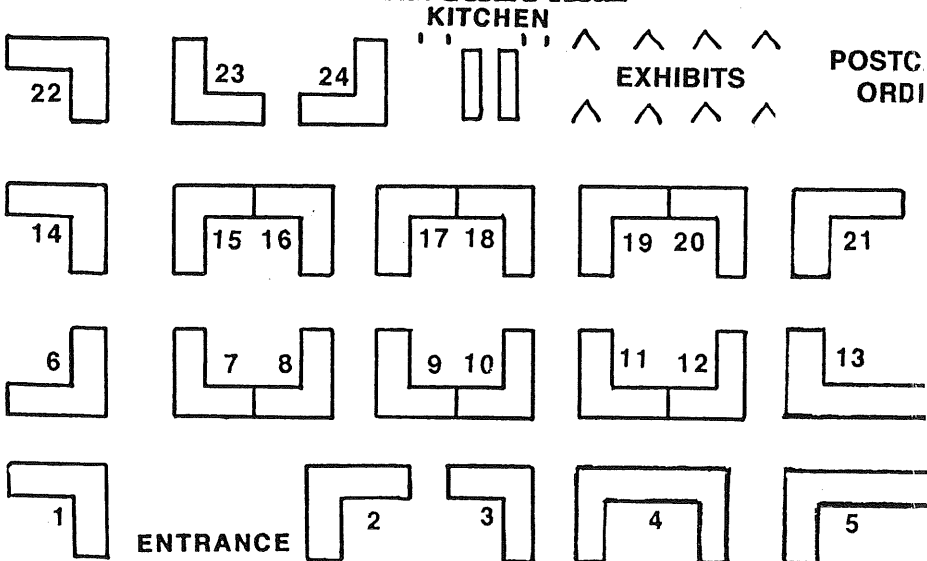
LCPC's deluxe hardcover book of 500 old Lancaster postcards goes on sale TODAY! Be sure to get your copy*
Sales desk at the back of the Expo hall. \$30 ea. incl. Pa. sales tax.
*an edition of 2,000 books

LCPC MEMBER-

Alphabetical Listing

| | | |
|----|------------------------------|--------------------|
| 23 | CAVALARI, Agnes | New Windsor, NY |
| 4 | COX, Lee and Shirley | Keymar, MD |
| 14 | COX, Roy and Helen | Baltimore, MD |
| 24 | FRANTZ, Leo and Helma | Etters, PA |
| 5 | GOTTLIEB, Marilyn and Howie | Rock Hill, NY |
| 2 | GRAY, Harris and Jayne | Brookfield, MA |
| 9 | GREIDER, Jere | Mountville, Pa. |
| 10 | HARTMAN, Reuel and Mary | Bloomsburg, PA |
| 8 | HUTTUNEN, Charlie and Nellie | Northport, NY |
| 16 | KUREY, Bob and Mary | Johnson City, NY |
| 17 | LUTY, Jim | Dillsburg, PA |
| 20 | MIDDLETON, Michael | New Holland, PA |
| 7 | MILLER, Jay | Philadelphia, PA |
| 13 | MORRISON, Jim | Georgetown, MD |
| 18 | NEWSOME, Arden and Bob | Stroudsburg, PA |
| 1 | RODRIGUEZ, Jose and Aida | Cheshire, CT |
| 6 | ROWE, Dolores and Leon | Kennett Square, PA |
| 22 | RUSSELL, Chris and Pam | Winchester, NH |
| 3 | SCHAEFFER, Dede and Daisy | Lancaster, PA |
| 15 | SCHURZ, Maria and Win | Denver, PA |
| 11 | SKILLMAN, Don and Connie | Milford, OH |
| 9 | STEINBERG, Howard | Quarryville, PA |
| 21 | TROVEI, Barbara and Lum | Port Jervis, NY |
| 12 | WACHTER, Don | Frederick, MD |
| 19 | WOLFERSBERGER, Bill | Winchester, VA |

WHERE THEY ARE

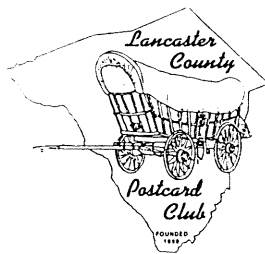


DEALERS

Numerical Listing

- 1 Jose Rodriguez
- 2 Harris Gray
- 3 Dede Schaeffer
- 4 Lee Cox
- 5 Marylln Gottlieb
- 6 Dolores Rowe
- 7 Jay Miller
- 8 Charlie Huttunen
- 9 Jere Greider
- 9 Howie Steinberg
- 10 Reuel Hartman
- 11 Don Skillman
- 12 Don Wachter
- 13 Jim Morrison
- 14 Roy Cox
- 15 Maria Schurz
- 16 Bob Kurey
- 17 Jim Luty
- 18 Arden Newsome
- 19 B. Wolfersberger
- 20 Mike Middleton
- 21 Barbara Trovei
- 22 Chris Russell
- 23 Agnes Cavalari
- 24 Leo Frantz

ARD BOOK
ERS, SALES



You're invited

to become a member of LCPC - the Lancaster County Postcard Club.

Our monthly meetings are open to the public. You may join us in sharing what we learn about postcards through our extensive library, educational programs and exhibits. We have postcard competition and auctions on a regular basis, a summer picnic meeting and Christmas dinner meeting.

Each year LCPC issues a unique PC* honoring National Postcard Week, the first full week in May.

Each month members receive an 8-page illustrated bulletin, THE CARD, which keeps them informed if they can't attend meetings. It offers local postcard history and general knowledge about our hobby. Look for a complimentary copy at the Club table.

LCPC's latest project is a book of Lancaster City and County postcards. It contains 500 local views with narrative and scarcity rating for each card. **It's available, today, at our 1998 Expo.** The deluxe hardcover volume includes a color section and will make a handsome gift for a friend or relative. Only 2,000 books have been printed. They are available on the Expo floor next to the exhibits.

*Postcard is written as one word or two words - both are correct.

**YOU ARE INVITED TO JOIN THE
Lancaster County Postcard Club**

**Meets Third Monday Each Month
Farm & Home Center**

Rte. #72(Manheim Pike)near Rte.#30.

Buy-Sell-Trade from 6 pm. Meeting begins at 7:30 pm

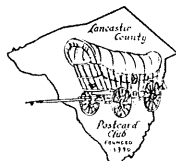
EXPO SPECIAL

You can join the LANCASTER COUNTY POSTCARD CLUB (LCPC) NOW for the special EXPO MEMBERSHIP PRICE of \$5 which will include membership to March 1999. (\$2 extra for each member at same address.) Yearly membership is \$8. Membership includes use of the extensive club library, participation in club auctions, programs, buying and selling at meetings and all other privileges including a monthly subscription to THE CARD, the club's 8-page illustrated publication. Pick up a free copy of THE CARD at the Registration Desk. You'll receive a copy each month even if you can't get to our monthly meetings.

DATE

Post Card

LANCASTER COUNTY POSTCARD CLUB



MY POSTCARD COLLECTING INTERESTS ARE

APPLICATION FOR MEMBERSHIP

.....

NAME

ADDRESS

TOWN

STATE ZIP

AMT. PAID.....DATE.....

PHONE

ACCEPTED BY

SPONSOR

Published by "L & W", Lancaster, PA