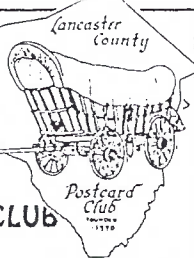


The Card

MONTHLY PUBLICATION OF
THE LANCASTER COUNTY POSTCARD CLUB
LANCASTER, PENNSYLVANIA



Meets 3rd Monday
Farm & Home Center
Routes 30 and 72
Lancaster, Pa.

July 1998 Vol.9, No.7 #103

NEXT MEETING

July 20, 1998 7:30 PM

Buy, sell, trade 6 PM

Yearly membership is \$8 (\$2 extra for each member at same address). Membership year is April 1 to March 31. Make check payable to: LCPC, c/o Dorathy Fry, 1050 Kleinfeltersville Rd., Stevens, PA, 17578. Advertisements are: \$15 full page, \$8 1/2 pg., \$5 1/4 pg., prepaid with copy. Classified ads are FREE to members, but please submit your ad for each issue. Send all ads, correspondence and change of address to Jim Ward, editor, 1795 Kleinfeltersville Rd., Stevens, PA 17578-9773, phone 717-721-9273. **THE CARD** staff includes Dorathy Fry and Carol Dennis, proof readers and Gerald Hostetter. Harold and Ruth Moyer handle the mailings. Recent circulation averaged 229 homes and 14 postcard clubs with whom we exchange.

PA. DUTCH AND SUCH Spoken Entirely in Pa. Dutch with hostess Dorathy Fry.

It's quite possible that LCPC has accomplished another FIRST in deltiology. The date was April 6, 1998.

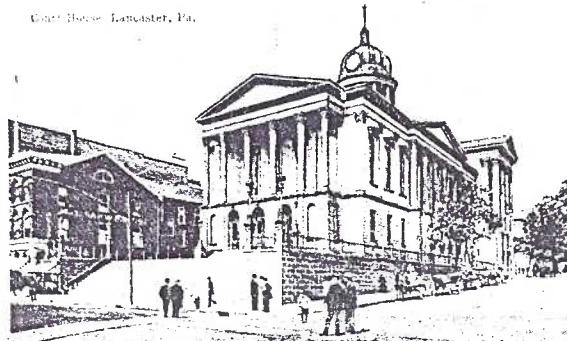
A half hour program was devoted to postcard collecting and in particular, our local club. Its host was LCPC past president **Dorathy Fry** and our very active committeeman and past director, **Harold Moyer**, was her guest.



LANCASTER COUNTY POSTCARDS

Windows to Our Past

County House - Lancaster, Pa.



*An edition of 2000 copies only.

"Die Poschtcard Club will en Buch drucke as Lancaster County abb weised." "The postcard club wants to publish a book showing off Lancaster County."

They held a running conversation, albeit illustrated with exhibit boards, in Pennsylvania Dutch, a dialect of German spoken years ago in the Palatinate.

Dot has spoken Pa. Dutch since she can't remember. Her college degrees didn't interfere. Teaching in one-room school houses most of her life certainly helped. When the local TV affiliate of Blue Ridge Cable began its weekly half hour program spoken entirely in Pa. Dutch, several viewers let it be known that the early guests on the show were murdering the Dutchman's dialect; so soon after the show began in 1990, Dot became a regular guest.

Two weekly half hour programs are taped at the same time and each is run at different times of the day through the next two weeks. Dot, early on, became a regular guest, starring for two of every four weeks throughout the year - for the next six years!

The program's host, Allen G. Musser, gave up his post in February of this year and Dot was a natural choice to fill the position - a lady with an encyclopedic mind and memory to match. Choosing a subject has always been easy for Dot (who uses only an index card or two for program notes). Finding interesting guests, however, proved a formidable task but having a friend of nine years, Harold Moyer, made this program a cinch.

"Heide henn mir der Harold Moyer bei uns. Ar iss en posht card Sammler." "Today we have Harold Moyer with us. He is a postcard collector."

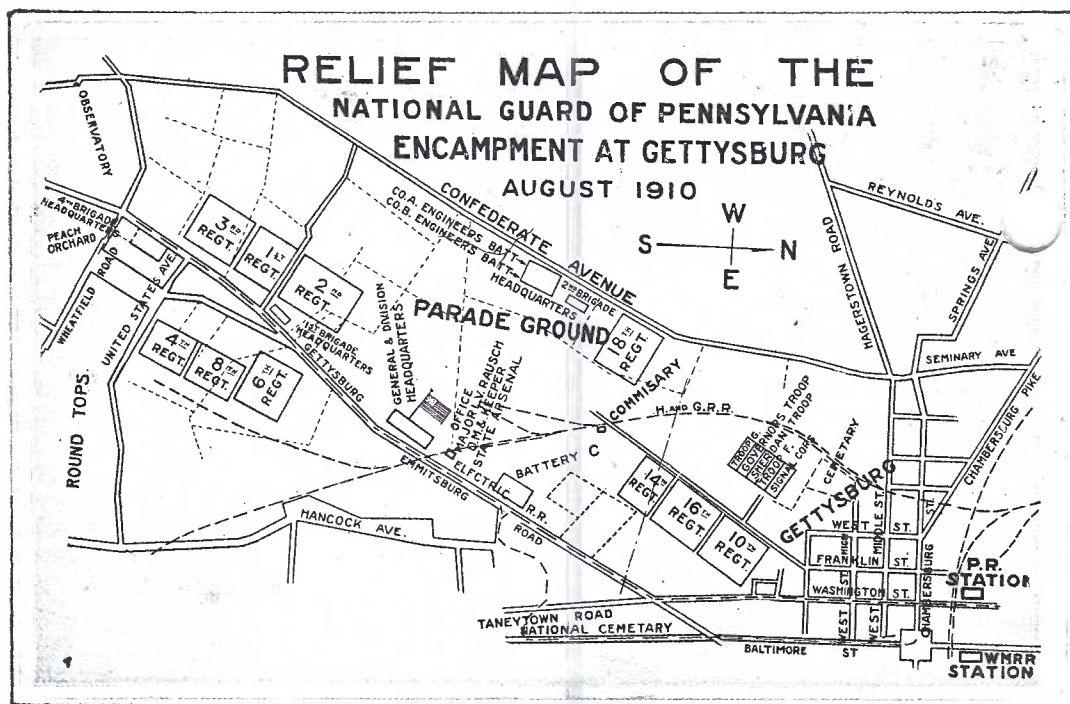
continued on page 2

Santa plays a dual role in this early card with his handful of twigs which a Belsnickle uses on children who've not been good.

NUTTY ABOUT MAPS

In keeping with the theme of our July program, we have a Relief Map of the Pa. National Guard Encampment at Gettysburg in the summer of 1910. Our speaker is past president Lewis Bechtold, a student of GAR and Civil War history. Perhaps he'll include this card in his presentation.

The railroad and radio station locations certainly help date the card. My personal opinion is that the map card is not common. Perhaps they've all found homes with C.W. historians.



PA. DUTCH AND SUCH continued

She reminisced, "*Ess arshet mohl as duh on dee Club kumme buscht have ich graut gewist ass duh en Deitcher bisht.*" "The first time you came to LCPC I knew immediately that you were a Dutchman." Harold had entered a conversation to offer an explanation and nearly everyone who heard him joked about his accent. Dot quickly came to his assistance and the crowd's laughter increased as the two new-found friends conversed.

Harold gave a brief history of cards as well as a few anecdotes. "Mail carrier hen carde ga-cancelled so sin sie geschwindt en der recht Blatz kumme." "Postmen canceled cards so they reached their destination quickly" (referring to the RFD carriers who hand-stamped covers as they rode along their routes).

"*Gabier uff carde sins mencht ga drucked warra in Deutchland.*" "Pictures of buildings were printed in Germany in the early days", Harold continued.

The dialogue continued as Dorathy reminded

the viewers that "*Die Poschtcarde Club will en Buch drucke as Lancaster County abb weised.*" "The postcard club wants to publish a book showing off Lancaster County." (ED.NOTE: Dutchmen are notoriously direct.)

After explaining the details of our up-coming publication, Harold continued. "*Ich hab doh en bord gamacht.*"

- 1) *Gabier fun Denver, Stevens, Blainsport un Reinholds.*
- 2) *Hahne as weggelin tzeiga.*
- 3) *Valentines - en carde as in fier dale kummt.*
- 4) *Bellsnickles - Sandy Claus und en Mann mit ra Gade.*

Harold had displayed exhibit boards showing local buildings, roosters pulling Easter wagons, Valentines including a lovely four-part installment and Santas accompanied by Bellsnickles with twigs for whipping bad children.

It was a fun program - even for those of us who barely recognized a proper noun here and there But with Harold's colorful boards and Dot's humorous animations, the "Dutch" audience certainly learned much about our hobby. We congratulate our two members for pioneering Postcards in Pennsylvania Dutch.

Good Wishes for Easter.



Hahne as weggelin tzeiga.

LINCOLN'S 185th ANNIVERSARY

July 1998,pg.3

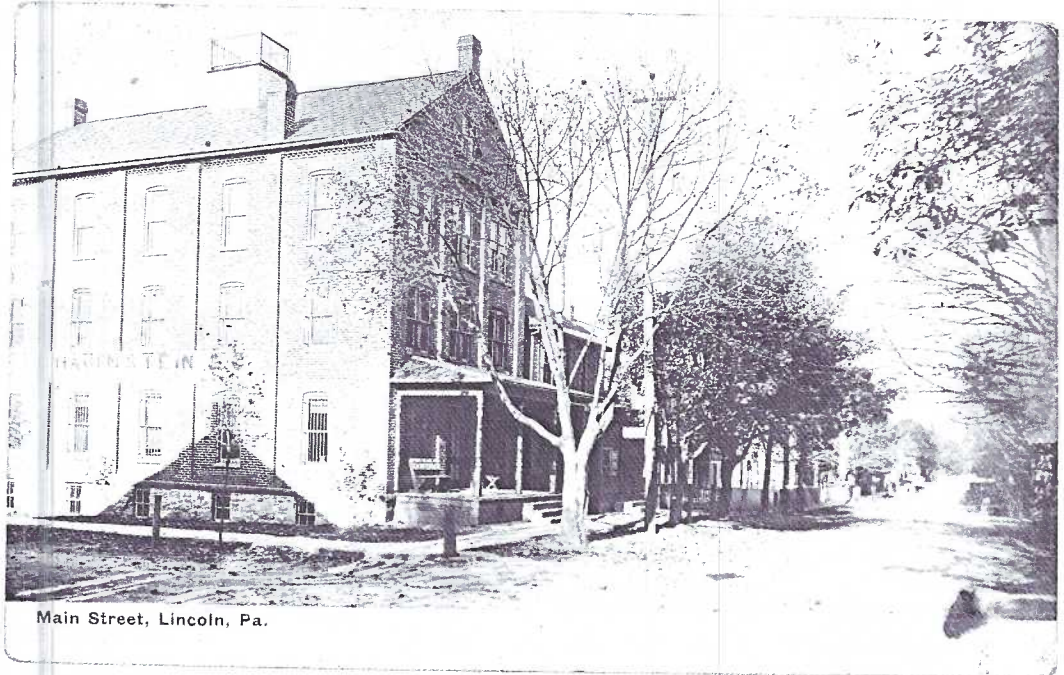
The little community west of Ephrata has gone through an identity crisis a number of times. It has been known as Lincoln and as Ephrata. The duality it suffers has been at the hands of the post office, local politicians, local merchants, transportation systems and amateur historians. But if ever a community strives to retain its identity, it's through its fire company. On June 20th, 1998, Lincoln celebrated with a variety of neighborhood activities, the greatest of which was dedication of the new Lincoln Fire Company building.

We honor the community of Lincoln, which is situated on Route #322 in northeast Lancaster County, east of Clay and Weidmansville and west of Ephrata and Route #272.

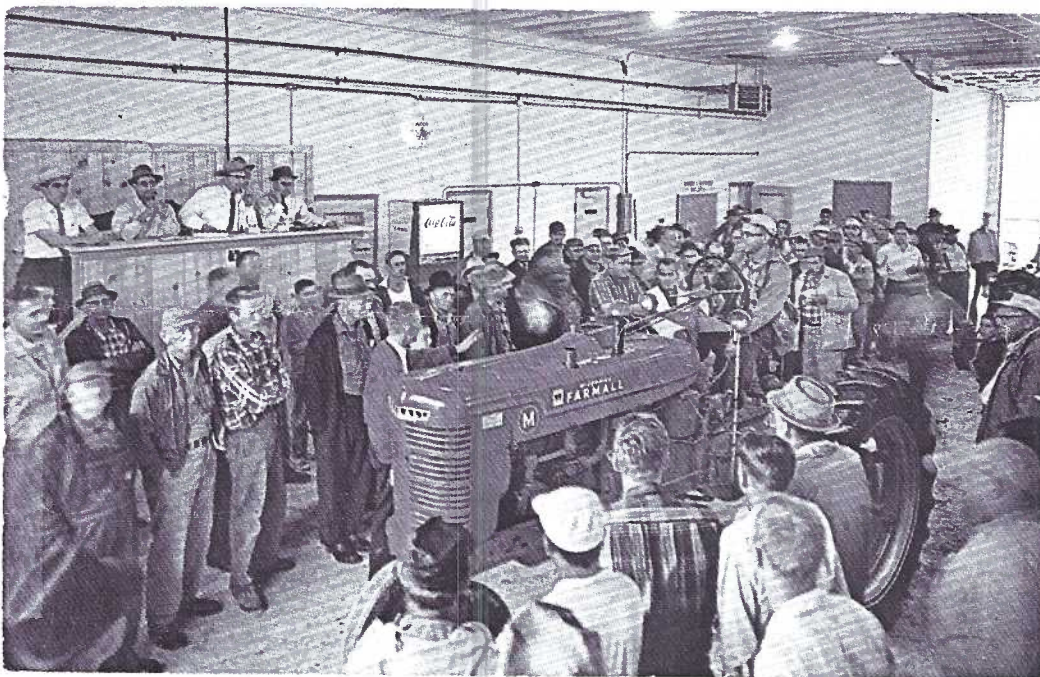
By the turn of the century you could expect every little town in Lancaster to have its share of cigar factories. True, some were merely the family kitchen or basement. They were each issued an official factory number, designating where the cigars were made.

This u/b real photo card shows the huge 3-story tobacco warehouse and cigar factory at 1400 West Main St. in Lincoln (now Rte. #322). The numbering of Main Street starts in Ephrata. The building is occupied by a business even today.

On the factory porch we can see a bench. With a magnifying glass we see painted across the back rest "THE ROAD TO REAL CLOTHES - S.M. MYERS STORE". Samuel Myers,



Main Street, Lincoln, Pa.



a Lancaster haberdasher, believed in advertising. We've seen a fair number of ads on early PCs as well as one card showing the interior of the store.

Fewer than 20 PCs designated *Lincoln* have been reported and only a handful from the chrome era when the community was generally considered part of Ephrata. This card was published by Garden Spot Equipment Auction, Inc. It's Dexter #63158B.

Included in the reverse caption is the company's commission rates: 10% up to \$50, 5% from \$50 and up. Tractors and self-propelled equipment was charged 5% up to \$700, 1% over \$700. 1% of the last bid was charged on a No Sale or a maximum commission of \$10.

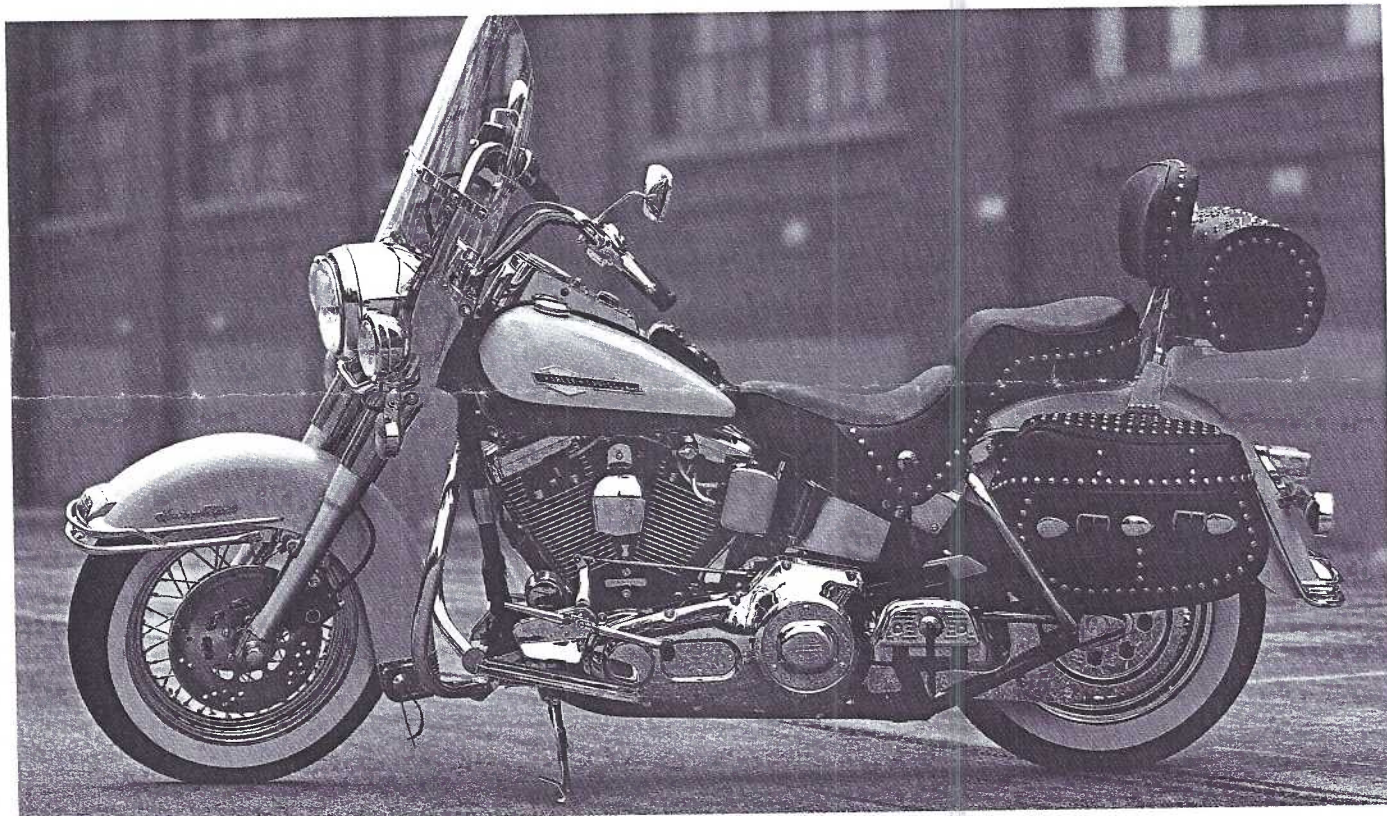
NEW MEMBER

#493 STEPHEN A. MARDER P.O. Box 181, Shillington, Pa., 19607, Ph. 610-682-4261. Interests are NYO&W Ry., Erie RR, DLW RR, RW&O RR, U&D RR, W,O&W RR as well as Lackawanna and Wayne Counties in Pa., Delaware, Chenango, Hancock and Cadusia counties in New York state and the Erie and Morris canals. As you see, he

is an historian with localized interests. Stephen has just published a 64 pg. book on the NE corner of Pa. and its NY neighborhoods. It has an abundance of color as well many b/w photos and PCs. He is willing to talk with others interested in publishing a book. Presently he wants info. on the Union Canal and Schuylkill Navigation Company.

95 years of VAR-O-O-O-O-O-M!

The Legend Rolls On



FLSTC™ HERITAGE SOFTAIL® CLASSIC™ WITH GENUINE MOTOR ACCESSORIES™

MILWAUKEE, WI '98

Partly Personal

My experience in Hog Heaven was barely a sniff. At 41, I bought my first cycle - a little (by any comparison) Kawasaki 250 Enduro. There was an oil/gas crisis and I was working part time in Lancaster. It just seemed like the patriotic thing to do - save gasoline on the 24 mile round trip commute. And too, it was rationale for a middle-age adventure. After 14 years and only 3,000 miles, the Enduro found a more appreciative home.

Harley's Free Tour

So when I heard there were free tours of the Harley-Davidson assembly plant in nearby York, I went with only mild enthusiasm. My friend and I were in just casual clothes, but we stood out like sore thumbs amid the crowd that waited for the next tour (dressed like real hog owners and real hog riders).

A business that's been around for 95 years must be doing something right. The Harley-Davidson assembly plant in York, Pa. is a model of efficiency - from the individual earphones and intelligent guides to the bright yellow lines restricting visitor paths to the cleanliness of every department. The company's museum featured dozens of magnificent bikes from every decade, including battlefield machines. The timed assembly line and department competition was evident at every turn.

If you've never toured a factory, try H-D for a thrill. Whether you're a bike fan or not, you'll be impressed.

Postcard Booklet

The 5" x 8" full-color postcard above is from a *free booklet* offered to us at the end of the tour in the summer of 1997. It's comprised of 22 postcards as shown, plus three giant 8" x 10" cards suitable for framing. All are made of PC stock, with full specs of each motorcycle on the reverse. I can't promise they'll send you a book, but **you might write and request Part #99360-98V.**

JW.

Try this address for FREE booklets:

**Harley-Davidson Motorcycles
P.O. Box 453**

**3700 W. Juneau Ave.
Milwaukee, WI 53201-0453**

**You might also try their web site:
WWW.Harley-Davidson.COM.**

H-D also offers a Motorcycle Safety Foundation Rider Course. You can reach it toll free at 1-800-447-4700.

Thanks to **Harold Galebach** for informing me of the availability of the booklets and to **Jim Rudisill** for encouraging me to take the tour.

21 Harley-Davidson 1998 Motorcycle full-color postcards

of the size shown are included in a hand-out brochure (paper-weight stock) when you tour the York plant. Ask for Part #99361 -98V.

July 1998,pg.5

FXDWG DYNA WIDE GLIDE

...a study in extremes: skinny 21" front wheel; wide, raked fork; ape hanger handlebar. The forward-mount controls create a traveling posture hard-core riders will appreciate. This midnight red and champagne pearl Anniversary paint is topped by a cloisonné emblem and serialized plate; also available in stock colors. \$14,775.



FLHTC™/FLHTCI™ ELECTRA GLIDE® CLASSIC†

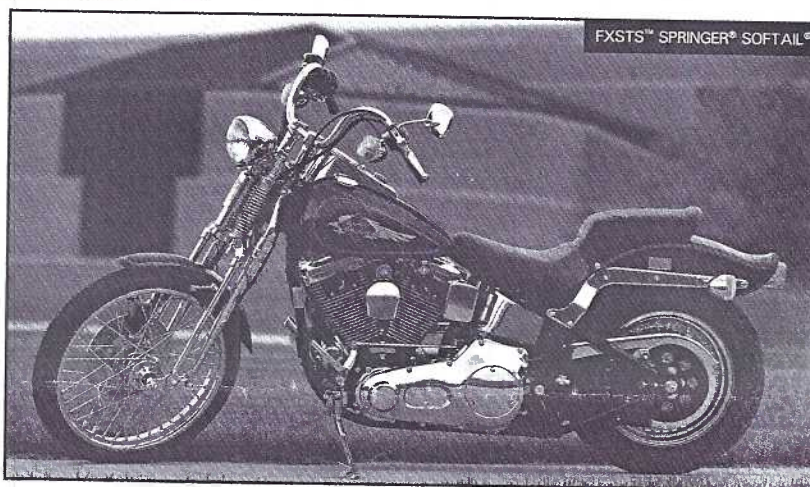


FLHTCI ELECTRA GLIDE CLASSIC

...loaded with the tried and true: fairing saddle-bags and Tour-Pak luggage box (holds two full-face helmets); new stereo-more power, no distortion no matter how high you crank up the entertainment. Deep voice chrome and black Big Twin available with carburetor or fuel injection, special cast wheels. \$14,975. \$15,220 Calif.

FXSTS SPRINGER SOFTAIL

...one of the smoothest-riding motorcycles to ever roll off a production line. All the computer-aided design and aerospace materials that went into the exposed spring suspension result in travel that feels as good as it looks. The hidden suspension of a Softail does the same for the rear. Big Twin engine. \$14,765. \$15,055 Calif.



FXSTS™ SPRINGER® SOFTAIL®

FLHRCI™ ROAD KING® CLASSIC WITH SIDECAR



FLHRCI ROAD KING CLASSIC with SIDECAR

We introduced our first sidecar in 1914. They've done everything from hauling freight to mount machine guns in two world wars. Options include laced wheels, powerful new amplifier and speakers for sound-system-equipped bikes and disc brakes.

JULY PROGRAM

At the July meeting we'll have a presentation by past president **Lewis Bechtold**. His subject will be the 135th Anniversary of the Battle of Gettysburg.

The Tichnor linen shown shows> the painting of Pickett's Charge by P.F.Rothermel. The climax of the battle came with the assault of Longstreet's columns on the third day,headed by Pickett's division of Virginians. The desperate character

PICKETT'S CHARGE, BATTLE OF GETTYSBURG, GETTYSBURG, PA. 8

BATTLE OF GETTYSBURG JULY 1-2-3—1863

BATTLEFIELD DATA

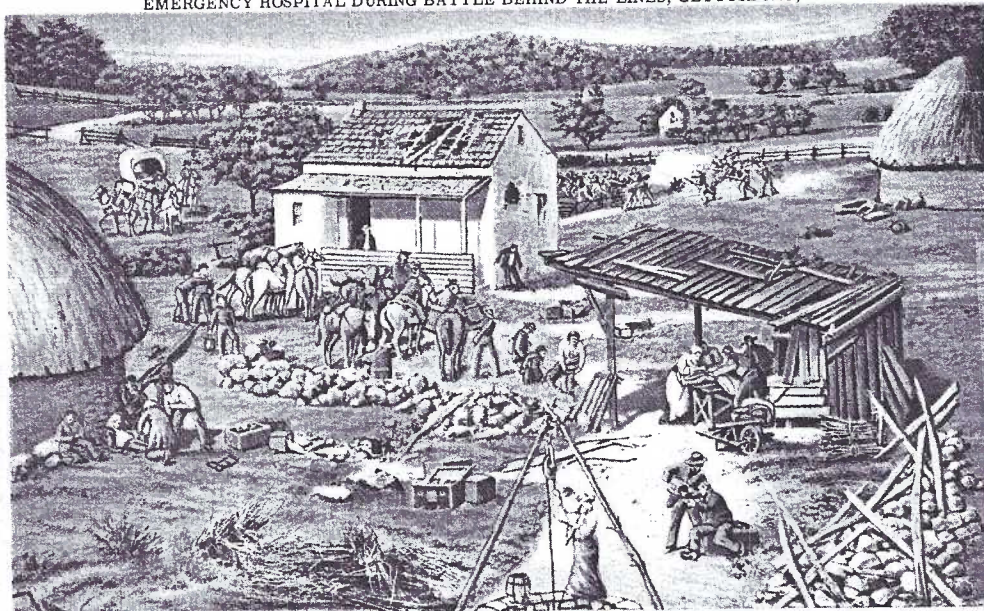
38 Square Miles of Battlefield
21,480 Acres of Land
2,500 Acres in Road and Memorial Sites
57 Miles of Road
35 Macadam and Telford Roads
12,296 Monuments
285 Mounted Cannons
5 Steel Observation Towers
\$7,000,000 Spent on Battlefield Park

BATTLE FACTS

90,000 Union Soldiers in Fight
85,000 Confederate Soldiers
28,000 Confederate Killed, Wounded and Missing
23,000 Union Killed and Missing
10,000 Killed Outright
3,654 Union Buried in National Cemetery
(Of Which 1,808 Are Unknown)
570 Tons of Ammunition Used



EMERGENCY HOSPITAL DURING BATTLE BEHIND THE LINES, GETTYSBURG, PA.



of the attack and defense is depicted in the hand-to-hand fight over the stone wall. Rothermel's painting (when this PC was published) hung in the flag room at the state capitol in Harrisburg. Geo.W.Buohl of Gettysburg published the card which includes vital statistics.

<This linen was published and distributed by N.A.Meligakes of Gettysburg. Metropolitan PC Co. did the printing. This realistic scene shows the crude first aid and medical treatment of the troops wounded in Pickett's Charge. The painting, by Paul Philippoteaux, was, for many years, on public display in the "Cyclo-rama" near the battlefield.

LANCASTER COUNTY POSTCARD EXPO 1998 Exhibit Rules, Categories and Awards

1. All LCPC members may enter up to (2) boards per category.
2. Postcards must be mounted on poster board, 22"x28", vertically oriented
3. Exhibitor's name and category must be placed on back of each board.
4. Three categories: **LOCAL VIEWS, PEOPLE, HUMOR**
5. AWARDS: 1st Place, 2nd Place, 3rd Place in each category
Best of Show (chosen from 1st Place exhibits)
Peoples/Popular Choice (voted by Expo visitors)
6. Judging based on: Postcard Information 1/3
Presentation and Originality 1/3
Condition, Completeness, Rarity 1/3
7. All boards must be delivered to the Exhibit Committee before the Expo or at the Farm & Home Center between 7 and 8 AM, August 15 and removed after the Peoples Choice Award has been presented (between 5 and 6 PM).
8. Deadline for submission of entry form: August 8, 1998.

THIS IS THE ONLY ENTRY FORM YOU WILL RECEIVE

You may submit a copy if you wish to keep THE CARD intact. Mail to either:
Barabra Mowrer, 786 Kames Hill Rd., Columbia, Pa., 17512 or
Earl Carver, 212 Pheasant Dr., Columbia, Pa., 17512

I will enter a board in the following categories: _____

FUTURE SHOWS

JULY 10 YORK, PA., York Post Card Club's Eighth Annual Show. Aldersgate Church, Tyler Run Rd., 9-6. \$1.50 adm. 25 dealers. (NOTE: changed from 2 day to 1 day show.)

JULY 24-25 DULLES AIRPORT John McClintock's 10th Annual Postcard Show at the Marriott Motel. More than 50 tables. \$3 covers both days.

AUGUST 15, LANCASTER, PA.

LCPC's Sixth Annual Expo. Farm & Home Center, Rtes. #72 and #30 just off Manheim Pike and Jones Honda. 23 dealers, dozens of exhibits, great home cooking and distribution of our 500-PC book - Lancaster County Postcards. Windows to Our Past.

OUR MEMBERS REPORT -

Bill Seigford discovered that Rent-A-Wreck is giving away five promotional PCs featuring their #41 car and their driver, Joey McCarthy. E-mail your name and address to: raw@rent-a-wreck.com or visit the above site and see the cards first. (Ed. Note - of course, you must have access to E-mail, etc. = nice way to polarize the collecting fraternity, since many of us don't! This isn't the first time I've encountered this sort of thing. It's a smack in the face to the rest of us.)

Bill Wolfersberger from Winchester, W. Va., was redden' up (cleaning house) and discovered a 1968 New Era article, dateline, Phila. Jim Tanner, of that city, had a collector's shop which incl. PC stock. "Most collect topical cards" he said. His inventory was largely 5¢ cards with a few valued at \$15. He was quoted as saying "Occasionally a card will go to \$50 or \$100."

How times have changed! And why weren't YOU collecting those 5¢ cards??

BOOK UP-DATE

Jim Ward reports the manuscript went to Science Press on June 11 and proofs should be back to the committee by the time you receive this CARD. Delivery is expected in time for distribution at the 1998 Expo as planned. There will be NO ADMISSION fee this year so subscribers will not be charged to pick up their books. A space is reserved next to the exhibit area for book distribution. **Ray Dennis** reports that we met our necessary goal for financing the book and all those members loaning LCPC \$500 or more will receive their free books as promised.



Koppel #156796 was printed for Stel-Mar Publ. Postcard Co. of Lancaster, Pa. The company name is a combination of Skip Dussinger's name and his wife's - Marshall and Stella. The descriptive info on the reverse reads: "Corn planting by the Amish is one of the few farm

Rigid Plastic Sleeves		
3-3/4 x 5-7/8	25/\$12.00 PP 50/\$20.00 PP 100/\$35.00 PP 1000/\$275.00 PP	5 x 7 \$25/\$22.00 PP 100/\$80.00 PP 8 1/2 x 11 25/\$28.00 PP 100/\$100.00 PP
Semi Rigid Sleeves 5 Mil Side Load		
3-7/8 x 5-7/8	100/\$12.00 PP 500/\$50.00 PP	4 1/2 x 6 1/2 . . . 100/\$15.00 PP 500/\$70.00 PP
Poly Sleeves Postcard Size		
	1000 SUPER CLARITY Polypropylene . \$15.00 PP	
	1000-2 MIL \$12.00 PP	
	500-4 MIL \$10.00 PP	
	1000 CONTINENTAL-2 MIL \$15.00 PP	
	500 FDC-4 MIL \$12.00 PP	
White Plastic Dividers		
	100/\$15.00 PP	500/\$65.00 PP
	With tabs: 100/\$16.00 PP	500/\$70.00 PP
White Cardboard Boxes		
POSTCARD SIZE - Half top, Full Bottom OR Full Top, Slant Front Bottom		
6-10 boxes \$3.00 each PP 11-24 boxes \$2.75 each PP		
STEREO VIEW/FDC BOXES 1/2 TOP (8W x 4-3/4 D x 14" L		
6-10 Boxes \$3.50 each PP 11-24 Boxes \$3.25 each PP		
25 Up \$3.00 each PP		
Vinyl Pages		Archival Pages
4 Pocket (3 1/2 x 5 1/2)	SL { 25/\$7.50 PP IL { 100/\$23.00 PP 250/\$50.00 PP MAY BE MIXED	4 pocket { 25/\$ 6.50 PP
3 Pocket (3 1/2 x 8 1/2)		3 pocket { 100 /\$18.00 PP
3 Pocket (4 1/4 x 6 1/4)		2 pocket { 250/\$40.00 PP
2 Pocket (5 x 7)		1 pocket { MAY BE MIXED
1 Pocket (8 1/2 x 11)		9 pocket {
9 Pocket (2 1/2 x 3 1/4)		
ALL POSTPAID WITHIN CONTINENTAL U.S.		
POLY SLEEVES 2 MIL Sizes 4 x 7 to 12 x 18		
BACKING BOARD - Solid White 9 x 12 • 11 x 14 • 11 x 15 • 12 x 16		
BLACK CHIPBOARD DISPLAY CASES (mounts)		
BLACK CHIPBOARD TRAYS W/FLOCK INSERTS (Red OR Black)		
COMPLETE SUPPLY LIST AVAILABLE		
HARRIS GRAY		
P.O. BOX 246 • BROOKFIELD, MA, 01506-0246		
508-867-7210		

chores that can be done sitting. The corn seed is placed in the two green canisters and multiple rows are planted as the horses pull the corn planter through the field."

Local farmers have their fields planted. As Abner's pop would say "Your crop ought to be good if the corn is knee high by the Fourth of July".

PICNIC-MEETING FOLLOW-UP

Someone up there likes postcard collectors. The deluge of wet weather we were experiencing for two weeks took a hiatus. Sunday noon saw the sun come out and we enjoyed the high 70's in the woods. Birders who stayed until 4:30 PM were treated to two male indigo buntings. Most of the other predicted species made their appearance during the day. Shirley and Ray Bubb indicated the song of the elusive ovenbird and others that kept to themselves among the thickets.

Ruth and Harold Moyer served barbecue and we shared our favorite salads and desserts. Of course, Ruth's homemade tea and punch were annual hits.

In attendance, in addition to the Bubbles and the Moyers, were Mary Ann and Bill Guntow, Maria and Win Schurz, Brian and Ruth Frankhouser, Norman and Ethel Zimmerman, Jim and Em Keebler, Harold and Dot Fry, Don and Marty Davis, Carol and Ray Dennis, Ruth and Fred Yohe, Betty Jane Weaver, Polly Curtis, Peg Hanna, John Long, Fran Hamilton, Jim Rudisill, Louise Nellon, Valerie Refi and Jim Ward.

Norman, Fred and Jim had cards to sell while Norman, Maria, Don and Jim had albums to show.

The brief program consisted of two minute presentations of recently acquired cards. Dot and Harold had a photo postcard of their home taken last winter. Brian found the location of the Weaverland Mennonite church. Norman's outhouse collection was supplemented with a corn-crib look-alike that included a penned notation by his mother. Ruth M. added a Dionne quintuplet to her growing collection. Harold M. gleaned a 1912 presidential mechanical PC from a recently purchased box of chromes and Jim showed a group of nine continental Amish PCs trimmed and over-printed "Park City" (see separate article).

RE-ISSUED CHROMES

Can you shed any light on a set(?) of chrome cards that have had the imprint PARK CITY LANCASTER, PA. added to the top, front of Amish standard size cards? (See illus.)

Who is responsible for them? Granted, there is a plethora of Amish cards, especially with photos by Marshall Dussinger. "Skip" died unexpectedly a few years ago. An educated guess would be that someone who bought inventory in Skip's estate saw a potential market.

It appears that a small die reduced the cards considerably, rounded the corners and, at the same time, slaughtered the captions on the reverse.



All of the cards we've seen are by Tichnor. If you have any numbers NOT appearing below, please let us know what they are. Also, and equally important, are these

re-issued "sets" still being sold? Mine were acquired in the secondary market (from John Klein). JW.

K10253/SM3	K10266/SM16	114176/A40
134169	137311/A55	142085/A65
144482	A66 or A68?	K10271

MONTHLY EXHIBITS

Thirty-one members and spouses saw a good variety of subjects, as is usually the case with a broad topic. The letter "F" was the theme for the June picnic-meeting.

BRIAN FRANKHOUSER FIRST Famous Fish Fables
JIM WARD SECOND Funny Families
NORMAN ZIMMERMAN THIRD Fly the Flag

HONORABLE MENTIONS

LOUISE NEILON Famous Firsts
RAY BUBB Fish, Fishing, Funnies
POLLY CURTIS Furry Friends
HAROLD MOYER Flag Day

Thanks to all for their participation. Here's a recap of themes for the remainder of 1998:

July board - Amusements or amusement parks

August single card - A real photo postcard of a person or group of people, but NO RELATIVES!

September single card - A school house

October single card - Halloween transportation

November boards - There will be TWO contests: one for Postcard Installments and a second for Mechanicals.

December board - Christmas transportation

In case you need a little incentive - First, Second and Third place winners each month receive \$3, \$2 and \$1 cash (this helps off-set the cost of boards and corners).

1998 EXPO

Jere Greider, our publicity chairman, reminds us that NOW is the time for local advertising. Show postcards are available from him at 285-5872. We need them in all antique shops, co-ops, drug stores, grocery stores and on community bulletin boards. He will also have quantities of them at the July meeting.

Barb and Earl remind you - work on your exhibit boards - PEOPLE, LOCAL VIEWS and HUMOR.