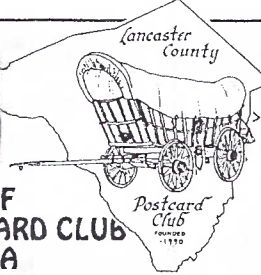


# The Card

MONTHLY PUBLICATION OF  
THE LANCASTER COUNTY POSTCARD CLUB  
LANCASTER, PENNSYLVANIA



Meets 3rd Monday  
Farm & Home Center  
Routes 30 and 72  
Lancaster, Pa.

Jan. 1998 Vol. 9, No. 1 #97  
NEXT MEETING:  
January 19, 1998 7:30pm  
Buy, sell, trade from 6 pm

Yearly membership is \$8 (\$2 extra for each member at same address). Membership year is April 1 to March 31. Make check payable to: LCPC, c/o Dorothy Fry, 1050 Kleinfeltersville Rd., Stevens, PA., 17578. Advertisements are: \$15 full page, \$8 1/2 pg., \$5 1/4 pg., prepaid with copy. Classified ads are FREE to members, but please submit your ad for each issue. Send all ads, correspondence and change of address to Jim Ward, editor, 1795 Kleinfeltersville Rd., Stevens, PA. 17578-9773, phone 717-721-9273. **THE CARD** staff includes Dorothy Fry and Carol Dennis, proof readers and Gerald Hostetter. Harold and Ruth Moyer handle the mailings. Recent circulation averaged 229 homes and 14 postcard clubs with whom we exchange.

## PROGRAMS

As predicted, **Jim Morrison's** postcards and photos of An Old Fashion Christmas were spectacular and well received. It's always a pleasure to have him at our Christmas party. Perhaps he might show up sometime in a red suit?

Did you realize that more than 100 of Jim's exquisite cards couldn't be bought today for under \$50 each? If he's able to outfit his Christmas Visitors Center in nearby Paradise (Lincoln Highway East) by next summer, maybe we could visit him as a group = a summer Christmas treat! Twenty-seven door prizes were given.

In January **everyone** is asked to bring one postcard that **BEST REPRESENTS WINTER**. We will be using the opaque projector (perhaps two) and we ask you keep your presentation to one minute. Time allowing, we'll ask you to show a second card if you've brought one along. **A \$5 cash award to the card chosen #1 by those present.**

## NEW MEMBERS

**#484 FRANK L. RESSLER** 90 Scheller Rd., New Providence, PA., 17560. Ph. 786-4737. Frank is 15 and just starting to collect. He likes "almost anything", especially Hummels, Smithville and nearby towns.

**#485 JOHN H. BRUBAKER** Box 1328, Lancaster, PA., 17608. Ph. 872-8971. Likes Lancaster County, Mount Gretna, Carlisle and Civil War. In case you don't recognize his formal name, Jack is better known among newspaper readers as The Scribbler (The New Era, Tues. and Fri. editions. ED: An unsolicited adv.)

**#486 BONNIE SIGMAN** 260 Millway Rd., Ephrata, PA., 17522. Ph. 859-3319. Collects Camp Cedar Pine, Slate Run, Cedar Run, F&M College, U.S. Postal Service and Caulkins the PC photographer.

\*Speaking of The Scribbler, Jack's predecessor was **Gerald Lestz** who happens to be LCPC member #385!

Jerry wrote the "old Scribbler" from 1938 to 1941 and after WWII returned in 1948 as the "new Scribbler". He maintained an avid readership until 1979 when Jack took on the bi-weekly job.

With member #486 and several reinstated members, **our LCPC family totals 301!** If you haven't yet received your new Roster of these 301 members, you will, soon.



Our eighth birthday postcard was published in England by the firm of Wildt & Kray, London. W&K were comparative 'latecomers' to the postcard business (began in 1904). Fortunately for collectors, they were one of a handful of firms to survive WWI and continue to issue a variety of greetings until WWII. This is a "real photograph" in their series of children's birthdays. It was sent to Malcolm "with love from Grandpa" on his birthday - May 13, 1934. **HAPPY 8TH BIRTHDAY TO LCPC, TOO!**

## 1998 OFFICERS, DIRECTORS

Voted into office at the December meeting were the following members (phone numbers, locations included):

<b>JIM WARD</b> , President	721-9273 Middle Creek
<b>SUSAN GLASS</b> , Vice-President	872-0810 Millersville
<b>VALERI REFI</b> , Secretary	738-3807 Ephrata
<b>BARABRA MOWRER</b> , Treasurer	684-5331 Columbia
Directors for 1997-98:	
<b>MARY DARRENKAMP</b>	397-0556 Lancaster
<b>BRIAN FRANKHOUSER</b>	354-7611 New Holland
<b>RUTH YOHE</b>	244-5978 Dallastown
Directors for 1998-99	
<b>MARY ANN GUNTOW</b>	291-4975 Lancaster
<b>BILL GUNTOW</b>	291-4975 Lancaster
<b>SALLY DANZ</b>	397-4602 Lancaster

NOTE: There will be monthly meetings for all Officers and Directors at the Farm & Home Center at **6:45 pm each meeting night** (45 minutes prior to the start of the meetings). All other members are always welcome.



## MULTIPLE BABIES

Baby New Year ushers in a new beginning for all of us, but for the McCaugheys of Carlisle, Iowa this will mean not just a new year but a new way of living. Since the birth of septuplets in Dec., every thought the parents must have, every move they make, must revolve around their four baby boys and three baby girls as well as the septuplets' older sibling. At this writing (12/8) the multiples are progressing well with the 24-hour attention demanded by premature but otherwise healthy babies. We wish them well.

This leads us to the subject of **Multiple Babies**.

For a few dealers MB simply never enter their albums. They have their reasons and we won't question them. For those of us intrigued with the tiny tykes, let's move on to those dealers who do stock Multiple Babies. If you can't find the category so labeled, ask. Quite often MB will be under Fantasy or Children - even Storks.

Since most of the Multiple Baby PCs are early and of German origin, the publisher may be designated by only a few initials rather than a name. On many multi-lingual reverses I've found only a series number. But I've found



### Series 319

434	soccer/football
446	cabbages
457	exaggerated fish
458	fantasy fish
469(?)	marshes
725	water lillies
775	wells
785	pole fishing
790	baskets, harvesting
795	fish netting
890	Scots
993	geese, ferris wheels
995	potting sheds
995	ferris wheels
1005	water pails
1049b	sledding
1086b	lg. letter greetings
1245	horse racing
1405	dirigibles
1433	automobiles
1523	ocean bathing
4517	parades, June bugs
4781c	cabbage patches
5511d	storks, teaching
a = Am. News Co. b = Theochrom	
c = Ettlinger d = P. Finkenrath	

### Series 320

these numbers to be adequate guides. Using these Series Numbers, I've come up with a variety of "categories" or "related subjects" on Multiple Baby cards. These have, so far, helped to complete at least a few sets (generally six cards each).

Here is a listing which may be helpful in finding not only Multiple Baby postcards, but quite possibly, a cute\* tie-in with another subject you collect.

\*Cute is a relative term. Most of us agree all MB cards are not cute - in fact, some are downright ugly. (Maybe this is a reason some dealers don't stock the babies.)

Series	Related subject
120a	ballooning
152	potties
303	boats, fishing, bird nests
319	chickens, eggs
319	railroad trains
320	butterflies
336	Easter eggs
346	gardening
349	wildflowers
362	bicycling
384	egg farms
405	nurseries



### Series 446 (Original Cabbage Patch Kids!)





#467 and #700 "Utah's Best Crop", are spoofs by Int. Art & Novelty and Curt Teich on Teddy Roosevelt's trip to that state in 1903. CT also issued "A Goodly Crop" on C-246, a linen card. The above is by no means a complete listing of series, but it should give you some incentive to look - perhaps not for MB, but for your theme.

Closer to home, we're proud to remind our readers that very active member #28, Mary Darrenkamp, is the

mother of Multiple Babies. Mary and her husband raised two - that is **TWO sets of twins!** She has heard the story of twins skipping a generation in families and these genes follow just that pattern in her family.

Mary's father was a twin and he had another set of twin siblings as well. Mary was not a twin nor were there any among her siblings (the skipped generation). So, if this pattern holds, it's quite likely Mary's grand

children will include at least one set of twins - maybe two - if her genes come true!

A word of caution - many Multiple Baby postcards are printed on poor stock and finding a card with few or no edge chips or blemishes is nearly impossible (another reason why some dealers won't stock the cards).

Illustrated postcards:  
soccer=#434, stork=#5511(PFB)  
fishing=#785, pottng shed=#995



# STEVENS HOUSE

*The Grand Dame at King and Prince Sts.*

As the first inland city in the United States, Lancaster had a greater-than-average number of hotels from the middle 1700's. George Washington, Lafayette and other colonial notables had little trouble finding very fine housing. But the town's hostelrys did run the gamut. It was as easy to find an over-night flea-ridden bunk bed as it was to find elegance.

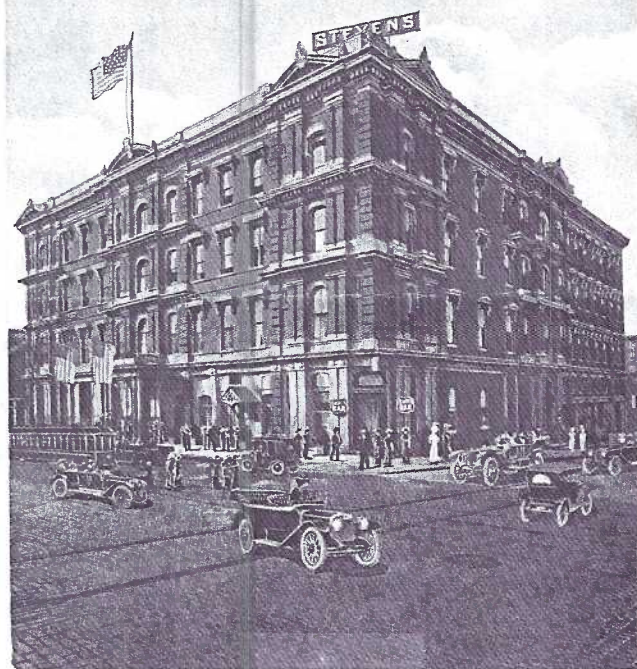
To most of us 20th century Lancastrians, the site at W. King and S. Prince Sts. wouldn't seem a likely choice for one of the most exclusive hotels the city has had - perhaps THE most exclusive. The group that purchased the half-block Krugh property on the southwestern corner had chosen wisely. In 1874 the Lancaster-Reading Railroad line (one of the most successful then) passed right along Water Street and used the Stevens House as a passenger station.

Those men must also be congratulated for their courage, for the City was not lacking hotels in 1874. The City Directory recognized 40 city hotels; minor ones weren't always listed. By 1888 this number had more than doubled! Thousands of German immigrants were joining their relatives and there was a need for inexpensive, temporary housing. In fact, many of these industrious people lived for years in hotels and boarding houses until they saved enough to build their own homes.

Within three blocks of the Square there were more than 40 respectable hotels listed in the 1875-76 directory:

Black Horse Hotel	Lancaster County House
Cadwell House	Lamb Hotel
Centre Square Hotel	Leopard Hotel
City Hotel	Manor Hotel
Columbia Garden Hotel	Mechanics' Hotel
Cooper House	Merrimac Hotel
Cross Keys Hotel	Michael's Hotel
Eagle Hotel	Park House
Exchange Hotel	Plow Hotel
Fairmont Hotel	Relay House
Fountain Inn	Rising Sun Hotel
Franklin House	Snyder's Hotel
General Taylor Hotel	Sorrel House
Globe Hotel	Southern Exchange Hotel
Golden Eagle Hotel	Stock Exchange Hotel
Golden Horse Hotel	Sun Hotel
Green Tree Hotel	Tremont Hotel
Hotel Franke	Union Hotel
Keystone House	Western Hotel
King of Prussia Hotel	White Swan Hotel

New Stevens House,  
Lancaster, Pa.



Leo Meyer card with numerous autos, people and a trolley drawn in for added interest. The 1915 message reads in part: "Have a puncture that kept us a short time. Will leave at 8 o'clock tomorrow. Good roads and a fine time. Very fine hotel....".

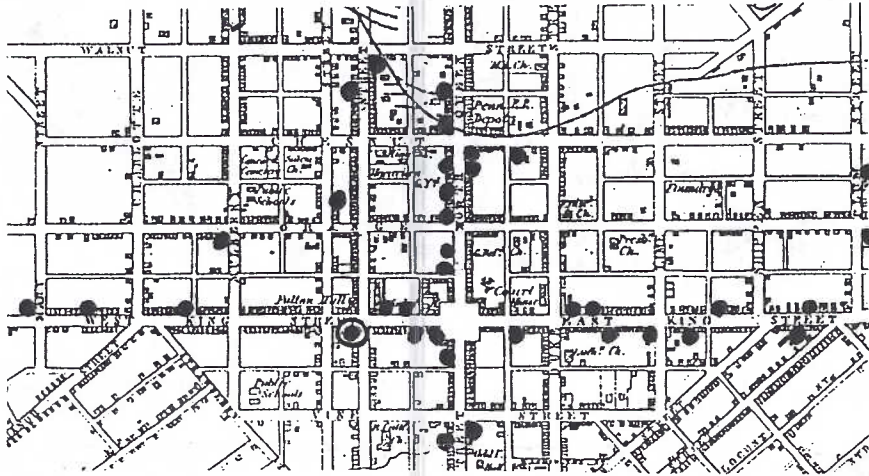


White border by National PC Co. features a real horse-drawn wagon and auto along W. King Street curb. In the distance can be seen the Follmer-Clogg umbrella factory.



# STEVENS HOUSE

On this map of center city Lancaster, 1875, are the approximate locations (black dots) for 36 of the 40 hotels. The STEVENS HOUSE is circled at the southwest corner of W. King and S. Prince Sts. The Fulton Hall/Opera House appears just beyond it on N. Prince Street.

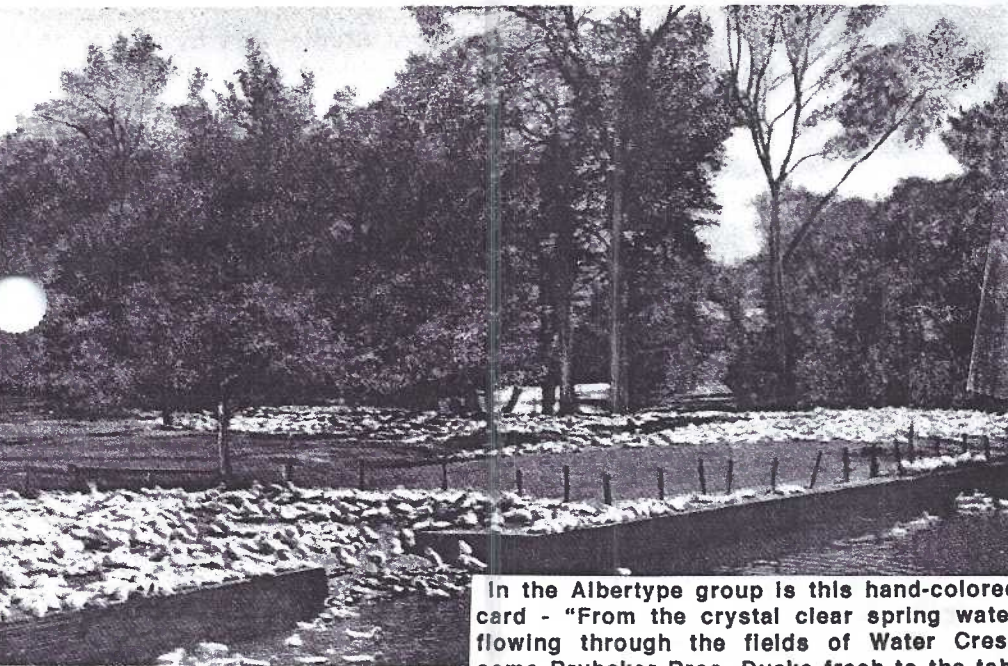


Historic English Dining Room  
Stevens House, Lancaster, Pa.

Specialty eating for the 1950's.



The Distinctive Goby Tavern  
Stevens House, Lancaster, Pa.



Harold Fry remembers the duck farm. It was between Witmer and Bird-in-Hand.

In the Albertype group is this hand-colored card - "From the crystal clear spring water flowing through the fields of Water Cress come Brubaker Bros. Ducks fresh to the tables of the Stevens House in Lancaster, Pa. 200,000 of these ducklings thrive on this tender green vegetable."

The famous  
**STEVENS HOUSE**

LANCASTER, PA.

Direction Lincoln Highway

ON THE  
EMPIRE TOUR



Soon after the establishment of the Lincoln Highway, the Stevens House became an Empire Tour stop. An identical card names it as a Capitol Tour stop.



# STEVENS HOUSE

The Shoemakers, last proprietors of the 'old Stevens House' draw attention to "...the delicious roast beef which is specially prepared by nationally famous Chef Means. And his excellent roast duckling dinner is available, too! Free parking during dinner." Jas. Hess #5486B



This Mellinger Studio view by Dexter shows the old Stevens House in its last decade.



## Check List: STEVENS HOUSE

Albertype Co., The .

Reverse reads "This is one of a series of Historic and picturesque post cards issued by the Famous Stevens House of Lancaster, Pa." At least two printings (different print type) have been seen.

Amish with various captions. The views show:

V Backs of parents and two boys

V Two men in front of court house steps\*

V Two men and one lady in sidewalk conversation\*

\*These cards appear with retouched faces where art

now shows features under the Amishmen's hat brims

H A Lancaster County Tobacco Field\*\*

H (...Brubaker Bros. ducks...\*\*\*

H Direct on/Lincoln Highway on The Empire Tour\*\*\*\*

H Lancaster, Pa., The Linoleum City of the World

H "On the Capitol Tour" (Dining and Grill Rooms)

H "On the Empire Tour" (Dining and Grill Rooms)

\*\*plain and HANDCOLORED varieties

\*\*\*marked HANDCOLORED (only type seen of this PC)

\*\*\*\*these exterior views are NOT the same if you study curb activity w/autos, trolley stand, etc.

These two cards lack the reverse caption "This is one of a series..."

H Direct on/Linc. Highway, A Capitol Tour Hotel\*\*\*\*

H The English Dining Room...Home of/Toby Tavern

Chilton Company

H 3099 New Stevens House, Lancaster, Penna.

Dexter Press, Inc. for James E. Hess

H 5486B chef behind serving table. Printed testimonial "signed" The Shoemakers (who happened to be the owners of The Stevens House)

Dexter Press, Inc. for Mellinger Studios

H 84548 (exterior corner view of Stevens House)

Leo Meyer

V R-46744 New Stevens House, Lancaster, Pa.

National Post Card Co.

H No. # Stevens Hotel, Lancaster, Pa.

Curt Teich

H 252-1690 Stevens House, Lancaster, Pa.

H A-14375 Stevens House, Lancaster, Pa.

Curt Teich for I. Steinfeldt

H A-6007 Steven's House, Lancaster, Pa.\*

H A-6007 Steven's House, Lancaster, Pa.\*

\*Same w/alterations in vehicles, poles, sky, etc.

Thomsen-Ellis-Hutton Co.

V No. # Historic English Dining Room

V No. # The Distinctive Toby Tavern

Tomlin Art Co. for Bennet Studios, Pennsylv., Pa.

H 25669ABC Canterbury Court

Unknown (possibly L.B. Herr)

H No. # The Quaintest Spot in Lancaster, Pa.

Printed message by Hager & Bros. refers to their recent decorative work at the Stevens House



# 22 AWARDS

## Members Contribute Info

At the annual Christmas party, Editor Jim Ward presented to a record twenty-two members Rewards of Merit for information they shared by way of THE CARD. In many cases a member had contributed to more than one issue and this was so noted. Jim emphasized how much it means to the staff and its readers to present a monthly journal that offers a variety of flavor and these contributing members did just that.

In some instances the contribution was little more than a mention of POSTCARDS seen in a national publication. But this, in itself, is a way of sharing information and promoting our hobby and that's a prime function of LCPC. Each contribution, no matter how big or small, is always welcomed.

### 1997 CARD contributors:

#### Brian Frankhouser

The Kinzer/Musselman Connection in New Holland  
Postcards in Print: Antiques Week  
Mearig Root Beer postal card

#### Harold Galebach

Postcards in Print: Orland Sentinel  
100 Postcards for 25¢ (Dad's correspondence)

#### Frank Coho

Postcards in Print: Antique Week

#### Betty Weaver

Postcards in Print: British Heritage  
World War II Memorials (Elizabethtown)

#### Norman Zimmerman

Bathroom Humor - A Fact of Life (outhouses)

#### Donald Brown

Free Ad Postcards (rack cards)

#### Harold Moyer

Comic Lovers Postcard with a Dutch Message  
Mearig Root Beer postal card  
Stevens Amusement Park

#### Ruth Moyer

Listerine Gum postcard  
Hershey Kissmobile postcard  
Campbell Kids Soup calendar postcards

#### Dot Fry

Mearig Root Beer postal card

#### Harold Fry

Mearig Root Beer postal card

#### Ray Bubb

Postcards in Print: Ducks Unlimited

#### Jim Rudisill

Postcards in Print: British Heritage  
Postcards in Print: Penn State Gazette  
Gargoyles

#### Howard Steinberg

Wherezit? Big Maples Farm

#### Newt Groff

Shad Fishing Once Again

#### Harry Lines

New Millersville University postcards

#### Bill Buckwalter

Additions to Kermes Landis Valley set

#### Gerald Hostetter

Homes of Movie Stars

#### Joan Lehman

Old York Baseball Team published as postcard

#### Merv Wenger

As co-founder of Butterfly Club, Merv was inspiration for a Butterfly/Moth postcard article

#### Linda Studenroth

Kissmobile postcard variation

#### Bud Prowell

Kissmobile postcard variation

#### Jim McMullin

World War II Memorials (Paradise)

## MONTHLY EXHIBITS

What a grand crowd to enjoy an easel of Christmas poster boards. An exact count of 63 included members and their families and we settled back to a fine array of colorful cards once we had finished fressin'.

Thanks go to those who took the time to entertain us:

<b>HAROLD MOYER</b>	FIRST	The First Christmas
<b>RAY BUBB</b>	SECOND	Christmas Birthdays*
<b>WALTER MOWRER</b>	THIRD	Christmas

### HONORABLE MENTIONS

<b>EARL CARVER</b>	Olden Christmas
<b>DON DAVIS</b>	Kids R Us
<b>RUTH MOYER</b>	Kewpie Greetings
<b>JIM WARD</b>	Christmas Sextuplets

\*Ray and his sister were each born on Christmas Day!

January's board theme is WINTER; February's board theme is CUPIDS; March's single card theme is SPRING - a postcard that most means SPRINGTIME to you.

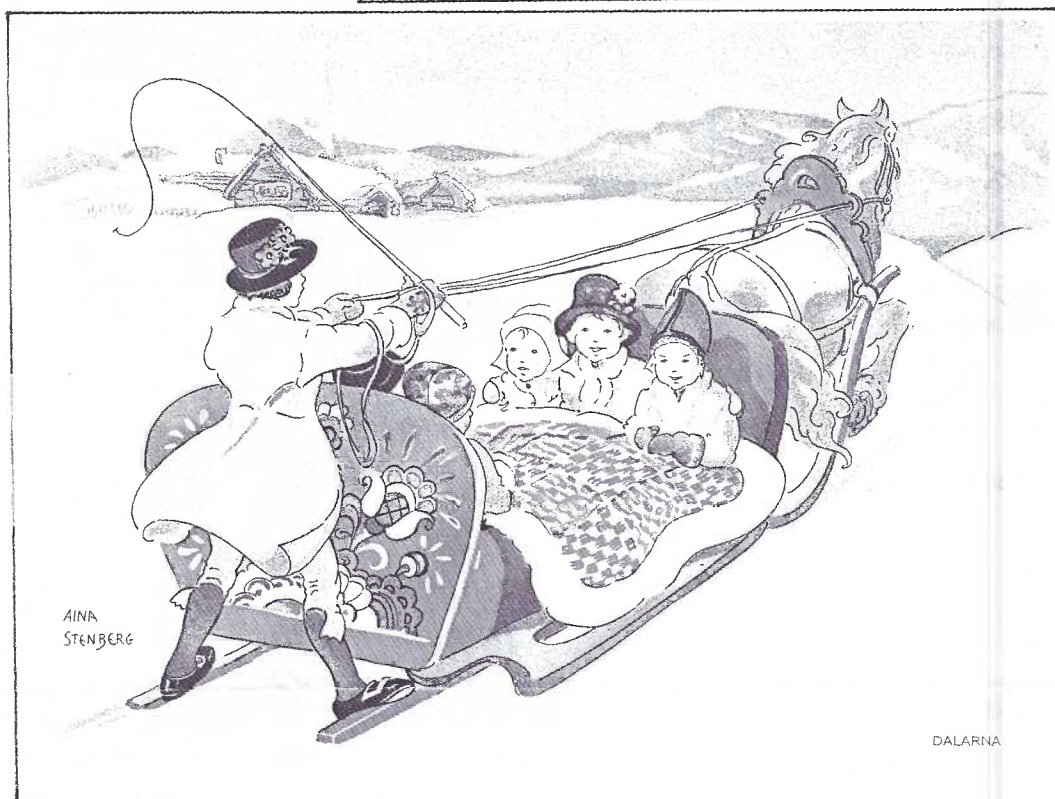
**Congratulations (warm good wishes) on your Birthday.** This silhouette postcard was mailed from Offenbach (an eastern suburb of Frankfurt) Germany to a West Philadelphia recipient in 1937. As some of you can attest, German handwriting can be difficult to decipher/translate but here the little boy and his messenger dog tell the story.



*Herzlichen Glückwunsch  
zum  
Geburtstage*

Where Dec. 21 came from is anyone's guess, but I apologize for any inconvenience caused by my error in posting the wrong December meeting date. It was the third Monday, as usual - Dec. 15, and I tried to rectify the error by phoning nearly two dozen families that normally attend the Christmas party. J W

**"The North Wind Doth Blow"**  
is in the Nursery Rhyme Series by J. Arthur Dixon Ltd., Shanklin, on the Isle of Wight, Great Britain. Although it was mailed in 1953, the Art Deco style found on several of Dixon's series is quite evident. The little boy is dressed in red. His sister, in her purple coat, has just seen a Christmas robin sitting in the holly bush. A snowman, house and stylized tree complete the picture. The artist is Hazel Sinpee.



The clean lines of Aina Stenberg's children and landscapes are easy on the eyes. The starkness of this winter scene is broken with Aina's intricate folk art. The bright yellow, blues and greens are flashed against the fire-engine red sled. They draw your attention to the sled's driver and then to the five youngsters who enjoy their ride under a red and white checkered robe. The design has a copyright by Eskil Holm of Stockholm, Sweden.



If in doubt about our monthly meeting you may call the following persons. Kindly pass the information on to other members.

CITY 397-0556  
EAST 354-5112  
WEST 684-5331  
NORTH 721-9273  
SOUTH 786-2362

Mary Darrenkamp, Lancaster  
The Zimmermans, New Holland  
The Mowrers, Columbia  
Jim Ward, Middle Creek  
The Steinbergs, Quarryville

**Remember -**  
**NEW LOCATION**  
**Farm & Home Center**  
**NEW HOURS**  
**Buy & Sell - 6 pm**  
**Meeting - 7:30 pm**  
**See you there - bring a friend!**