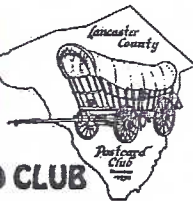


The Card

MONTHLY PUBLICATION of
THE LANCASTER COUNTY POSTCARD CLUB
LANCASTER, PENNSYLVANIA



Meetings: 3rd Monday

Faith United

Church of Christ

1204 Wabank St.

Lancaster, Pa.

Nov. 1997 Vol. 8, No. 11 - 93

NEXT MEETING - Mon. 7 pm

November 17, 1997

Buy, Sell, Trade from 5:30 pm

Yearly membership is \$8 (\$2 extra for each member at same address) payable to LCPC, c/o Dorothy Fry, 1050 Kleinfeltersville Rd., Stevens, PA., 17578. Ads: \$15 full pg., \$8 1/2 pg., \$5 1/4 pg. prepaid with copy. Classified ads FREE to members. Corres. to: Jim Ward, Ed., 1795 Kleinfeltersville Rd., Stevens, PA., 17578. Ph. 721-9273

PROGRAMS

October's FREE-FOR-ALL proved to be another great success. With unlimited table space offered to all members to buy, sell and trade there were several "dealers" waiting at the doors at 4:30. Final room set-up showed these member/dealers behind tables with postcards and misc. paper items of all kinds: Dede Schaeffer, Dick Bishop, Bob Kramer, Howard Steinberg, Audrey Butler, Mike Middleton, Norman Zimmerman, Ruth and Harold Moyer, Herb Kauffman, Walter Mowrer, Steve Cohen, Jim Ward, Paul Weidman and Gordon McKinzie.

Remind your 1998 Program Chairman to have another such event next year!

November's program will be a 100 lot auction (see list).

December's program will be a Christmas slide presentation by Jim Morrison. It will coincide with our Annual Covered Dish Christmas Party. Barbecue, cold drinks, coffee and place settings will be provided by LCPC. A covered dish (hot or cold) will be provided by each family or single member.

FUTURE SHOWS

Nov. 21-22 York International, York, PA.

Nov. 28-29 Morlatton PC Club (See enclosed postcard)

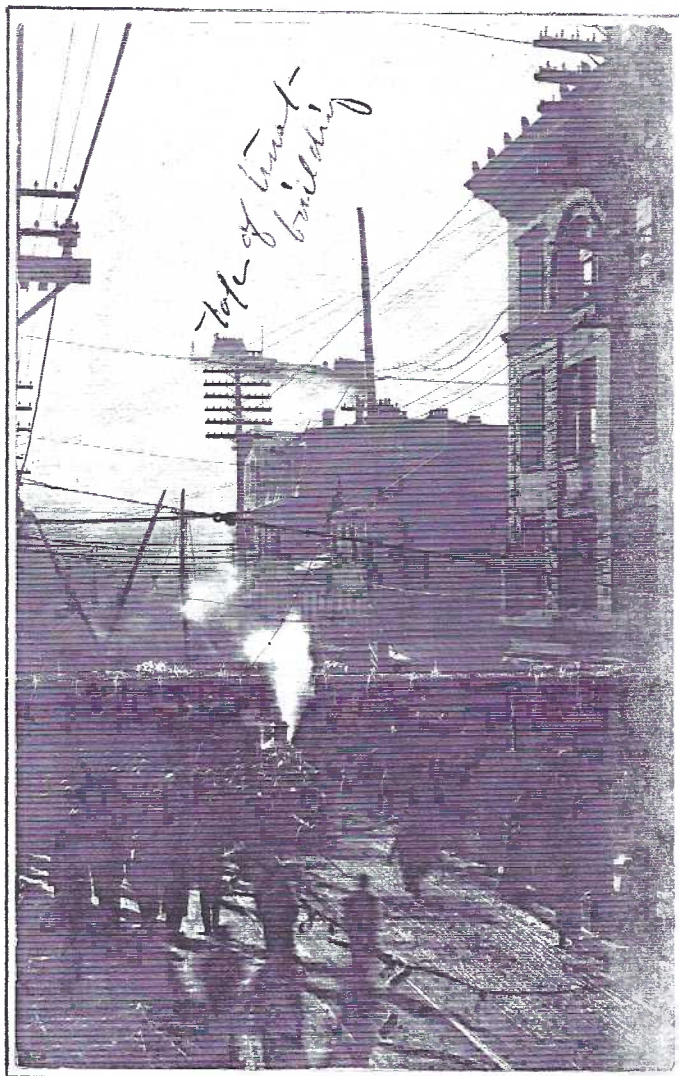
SCHMUCKER DISPLAY

One of the most respected postcard artists and one who designed postcards that are among the most collectible in the hobby lived in Pennsylvania and later, Wilmington, Delaware for most of his life. Samuel L. Schmucker attended the Pa. Academy of Fine Arts, had a studio in Philadelphia and later moved to Delaware where he married the daughter of Edwin P. Rice, a well-known Delaware architect.

For the first time on the East coast there will be a fine display of unusual and scarce Schmucker items thanks to the generosity of a local collector. These items will include an original postcard, a fan, handkerchief boxes, chocolate and cosmetic box labels as well as actual boxes, valentines, an unpublished original painting not seen before by the general public, a picture of a Schmucker designed vase featuring three butterfly girls and other ephemera.

This will be a special opportunity to view rare and perhaps unique items from a premier artist. The items will be displayed at the Morlatton Post Card Club Inc. Show on Friday, November 28 from 10 am to 6 pm and Saturday, November 29 from 10 am to 5 pm at the Farm and Home Center, 1383 Arcadia Rd., Lancaster.

Submitted by Dolores Rowe, Show Co-chairlady.



On this back of this real photo postcard the message reads: "My Dear Sister, This is the way the fire looked before it broke out the roof. You can have some idea how the crowd looked. I stood right there by the Y.M.C.A. till the wires began to fall then everybody began to run and I did too. With love, Katherine."

In the center, the intersection of N. Queen and Orange Sts., can be seen a steam pumper. The YMCA, half block north of the fire, can be seen on the right.

Katherine has marked the "top of the Trust building". See the entire story of the furious Lancaster fire on pgs. 4 and 5 as well as the identity of a photographer of many of the postcards.

NEW MEMBERS

#479 ESTHER E. REBMAN 300 Willow Valley Lakes, C-402, Willow Street, PA., 17584. 464-0671. No particular postcards but a general interest.

#480 ANDREW SHAUBACH P.O. Box 848, Harrisburg, PA. 17108-0848. Ph. 1-800-221-2639. Collects local views including Wildcat Falls, York County.

Welcome to these two members. Mrs. Rebman's late husband, Earl, many of us remember as being the leading force in Lancaster to give the Conestoga Creek its deserved name Conestoga River. Mr. Shaubach also has an interest in water. He is the present owner (and preserver) of the property surrounding Wildcat Falls.

Paid membership now totals 290.

THE CARD arrives courtesy of: Jim Ward, editor; Dot Fry, proofreader; Gerald Hostetter, staff; Jim Rudisill, artist; Gwyn Fulmer, mailing list; Harold Fry, mailing.

At This Thanksgiving Season

NYLA THOMPSON

A courageous lady's postcards

Little Nyla Thompson had contracted polio when she was just nine years old. This amazing little girl saw past her handicap and used the art training she received through the mails from Art Instructions, Inc. of Minneapolis to fulfill her desire to be independent and self supporting.

Enter Don Bartells, a small publisher of chrome postcards dealing out of McAllen, Texas. It was 1954 and Don had shown a few of Nyla's hand-made cards in the Postcard Collectors Magazine edited by one of America's pioneers in our hobby, Bob Hendricks. At the end of the article Bob announced that Don had opened an escrow account in a McAllen bank and funds to support the printing of a set of Nyla's paintings on postcards would be solicited for the account.

For each \$1.00 order the subscriber would receive the complete set of 24 postcards. Orders came in quickly and soon postcard clubs became sponsors (see listing). The entire hobby seemed to be behind the effort for the next few years and Nyla (now in her twenties) was so very grateful for the country-wide support.

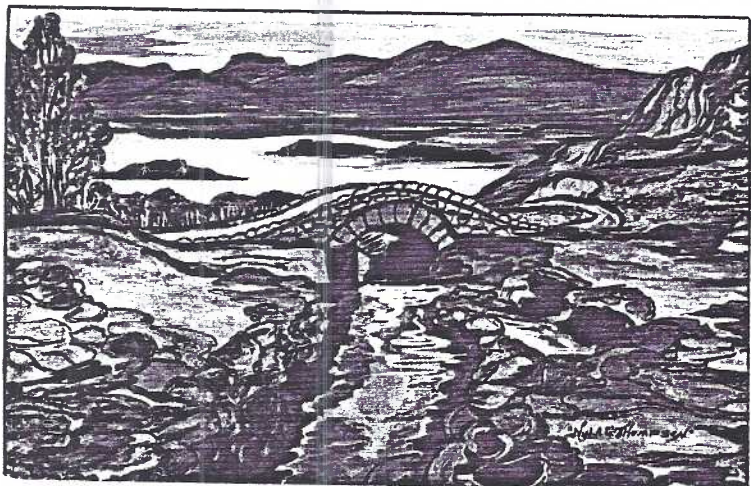
You can still find the cards, albeit one at a time, in dealers' boxes under Signed Artist, but more often they can be found with inexpensive mixed greetings. They are easily identified with Nyla mentioned on each.

Numbers one and fifteen are photos of her and her family. The other 22 are Nyla's scenes, animals and still-lives in oil, all done as she held her paint brush in her mouth. Nyla was confined to a wheelchair, paralyzed from the neck down. In her early years she was encouraged by Grandma Moses as well as President Franklin Roosevelt, himself a victim of polio.

The cards in this set of 24 are all signed by Nyla but it's supposed that there are other cards out there, unsigned, which Miss Thompson did on a made-to-order basis for 35¢, 3 for \$1.



#	Description	Sponsor
1	Photo-Nyla drawing	Minneapolis PC Club
2	Horses near stream (illus.)	S. Calif. PC Club
3	Yellow-orange roses (illus.)	Windy City PC Club
4	Red roses, tan background	Roundup PC Club
5	Red roses, gray background	PCCA
6	3 Paintings/red background	A friend
7	Geese over lake	Mona Ligo Club
8	Red cottage	S. Calif. PC Club
9	Deer in forest	Nyla's friends
10	Cactus/mountain	Nyla's friends
11	Seascape	All States Club
12	Peacock	Bay State PC Club
13	Hunting dogs/birds	Art Instruction, Inc.
14	Flamingos	Bronx postal clerks
15	Photo=Nyla, sister, mother	Wolverine PC Club
16	Covered bridge	PCCA
17	Close-up of cat	PCCA
18	Wild turkey	Arrow Transport.
19	Bison	Arrow Transport.
20	Water mill	no listing
21	Oxen and farmer	no listing
22	Bridge and stream (illus.)	Friends of Nyla's
23	Pheasants	Friends of Nyla's
24	Six paintings	Friends of Nyla's



The majority of the cards were printed by Koppel and carry the PCCA seal and notation "This card sponsored by". Nyla's address is given as 3505 Vineland Dr., Austin, TX. The last few cards were printed by Dexter with no PCCA seal and the sponsor is included in the text. Nyla's address reads Route 2, Box 663, Austin, TX.



LCPC AUCTION #26

Monday, Nov. 17, 1977

All items are PCs unless noted. Examine lots carefully.
u=used, un=unused, l=linen, c=chrome, HTL = hold-to-light

- 1 10 Gettysburg
- 2 10 Valley Forge
- 3 5 Columbia, Marietta, Millersville, Wheatland
- 4 15 Churches
- 5 15 Restaurants
- 6 10 Greetings
- 7 15 Sheep
- 8 15 Skylines
- 9 10 Flowers
- 10 14 Niagara Falls + 4 Canada folded PCs
- 11 5 Easter un
- 12 HTL German cathedral un, back loose
- 13 Brethren Home un
- 14 Book Dept., Mennonite Publ. House un
- 15 Lanc.-Rosery Shop ad, 10/14 calendar
- 16 Ephrata-Butzer Bros./Pathfinding Tour ad
- 17 6 Verses u/un
- 18 8 Reading, PA. + folder
- 19 3 Fred. Remington sculptures, 4 paintings un
- 20 4 Indians u/un
- 21 Box of used sleeves
- 22 Assortment - 40 diff. l u/un
- 23 40 diff. buildings, c un
- 24 Set 10 Photos- S.S. Statendam un
- 25 Montage of postage stamps= fishermen un
- 26 11 diff. Panama and Canal c, un
- 27 5 diff. Paul Revere house c, un
- 28 Harrisburg, 4 old folded from Capitol dome d/b
- 29 Souvenir folding PC-Metro. Life bldg., 1912
- 30 5 Library/Congress, #210, #1-5, illus. PC Co. un
- 31 26 Postal cards, some w/ads
- 32 11 linen, chromes, some local, 1 folder
- 33 20 Motels, lodges c, u/un
- 34 6 Foreign booklets un
- 35 18 PA., l and c, u/un, 3 folders
- 36 McCall's Ferry Dam construction
- 37 20 Real photo-scenery, animals, etc.
- 38 15 Aerials, l and c, u/un
- 39 25 Art, sculpture, etc., mostly foreign
- 40 20 Bridges u/un
- 41 HTL Independence Hall
- 42 HTL Easter
- 43 HTL Merry Christmas
- 44 HTL Kind Wishes for Christmas
- 45 4 Lanc. County
- 46 4 Lanc. County
- 47 4 Lanc. County
- 48 4 Lanc. County
- 49 4 Lanc. County
- 50 4 "The Queen's Doll House"

50A Episcopo opaque projector by Leitz
30" long x 9" wide" x 18" high, very fine condition

- 51 2 Real photos: Lime & Madison, Lanc. + flag pole
- 52 18 New Year
- 53 17 Valentine
- 54 12 Washington, Lincoln, flags
- 55 20 St. Patrick's Day
- 56 27 Easter
- 57 8 Thanksgiving
- 58 31 Christmas
- 59 20 Birthday
- 60 24 Flowers, "Springfield Ohio Roses"
- 61 2 Dogs, 2 cats
- 62 6 Lovers
- 63 3 Ladies incl. Harvard
- 64 8 Views incl. Jamestown Expo.
- 65 CT. PC Club + WWII busy people
- 66 Novelty peacock, milkmaid + signed M. Golay
- 67 Real photos: Marietta Pioneer #1, 1912 Old Home Wk.
- 68 6 Santas
- 69 3 Halloween
- 70 Pack of linens and chromes
- 71 Pack of folders and small sets
- 72 Lords Prayer set un
- 73 13 "PA. Has Everything" un
- 74 Set 6 Barrose Terrace, Lanc. un
- 75 25 Real photos of children
- 76 4 Franklin & Marshall by L.B. Herr un
- 77 4 Lanc. City by Souvenir PC Co., un
- 78 4 Local by D.B. Landis u/un
- 79 4 - Landisville, Neffsville, Lincoln, Quarryville
- 80 8 Thanksgiving u/un
- 81 8 Real photos: "instant families"
- 82 24 PA. Turnpike linens
- 83 10 Lanc. trade cards, over-size
- 84 16 Lanc. trade cards
- 85 16 Lanc. trade cards

Next five lots are duplicate books from LCPC library:

- 86 Fantasy Postcards by Wm. Oilette
- 87 Mail Memories by J. Kaduck, 1st print., 1971
- 88 Mail Memories by J. Kaduck, 4th print., 1979
- 89 Rare & Expensive PCs, vol. 2 by J. Kaduck, 1979
- 90 Patriotic Postcards by J. Kaduck, 1974
- 91 2 Official Lanc. City seals (1 pc by Board of Trade) un
- 92 4 Lanc. by Little Art Shop, hand tinted u/un
- 93 8 Lanc. "Pa. Dutch Talk" un
- 94 6 Roadside America, Hamburg, Pa. l, un
- 95 11 RP Red Bird Mission un
- 96 Set 12 Bible Picture Cards un
- 97 "Book of Views" by Marietta News Agency un
- 98 1992 and 1993 calendars, 124 local PC views un
- 99 1994 and 1995 calendars, 124 local PC views un
- 100 1,000+ mostly chromes, some folders u/un

FIRE POSTCARDS of REILLY BROS. & RAUB

Lancaster began converting its fire apparatus from horse-drawn to gasoline-run trucks in 1914. It purchased one of its last horse-drawn vehicles, a 75-foot aerial truck with automatic spring lift in Jan. 1910. It was delivered February 9 from the American-LaFrance Foamite Company of Elmira, NY for \$9,000.

The following morning at 6:53 am an alarm was received and the brand new aerial truck was taken to a fire - Lancaster's worst fire up until then. The truck had not yet been officially accepted by the City nor had it been put in service, but it was on the scene. It witnessed the destruction of four commercial properties in downtown Lancaster (see list) and had it not been for the fire resistant wall of a neighboring bank building there might have been total destruction of 15 additional businesses.

The Firm

REILLY BROS. & RAUB was a respected name in the city. Founded in 1880, it had grown steadily until it occupied 50,000 square feet of floor space extending from its store front at 40-42 North Queen Street to 41-47 Market Street, a half block to the west. There had been hardware stores on the site for nearly a century but it took the acumen of RB&R to extend its perimeters to include a wholesale business that had sales representatives covering hundreds of miles beyond the City limits - throughout the County and the states of Maryland and Delaware. (See accompanying article.)

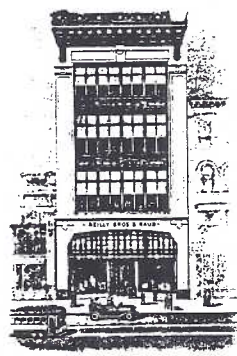
Theirs was not a typical country hardware store. In addition to nuts, bolts and screws, the stock included house furnishings, stoves, paints, glass, oils, iron, steel, cement, plaster, terra cotta pipe and all varieties of building materials. The Lancaster Board of Trade's 1909 edition lists them as agents for Hercules dynamite (very prophetic), Alexander belting, Puritan oil stoves, Novelty stoves, hot air furnaces and ranges, Whitney baby coaches, Green Star paint, Light Lift pumps and Alaska refrigerators.

They had ample storage for it all and therein might lie the reason for such a tremendous fire - a fire that took nearly half a day to bring under control.

The Postcards

Several of us in LCPC have some of the real photo postcards of the Reilly hardware store fire. A few of us have been fortunate to find some with neatly chronicled hours noted on the reverse: "About 7:30 A.M., About 8:30 A.M., About 10 A.M., About noon, after the walls were down", etc. But until recently, the author of these real photo postcards has been a matter of speculation.

If you check the residents of this first block of N. Queen St. (see listing) there were two publishers who might have had ready cameras: The Examiner-Express or The New Era. Also, I.J. Dengler and Joseph Hess had photography studios in that block and there were at least half dozen more studios less than a block away! But the true chronicler comes to light with a message on the reverse of two cards mailed (in an envelope - no canceled date available) to Miss Mary Miller, Mexico, Juniata County, Pennsylvania.



Terms

\$2.45
2% - 10 Days.

1930's Billhead from the Reilly Bros. & Raub Hdwe. Store (reduced)

REILLY BROS. & RAUB

INCORPORATED 1913

HARDWARE

HOUSE FURNISHING GOODS

AUTO SUPPLIES
MILL SUPPLIES

PAINTS & VARNISHES
SPORTING GOODS

44-46 NORTH QUEEN ST.

41-47 NORTH MARKET ST.

Sold to

Mr. H.S. Root,
Lancaster, Pa.

LANCASTER, PA. August 26, 1931

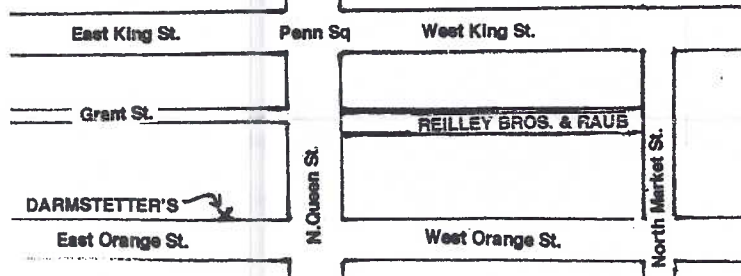
North Queen Street Occupants 1909-1910

East Side (opposite Reilly fire)

1 Breneman Bros. clothing
3 Gable dentist, etc.
5 Hoeltzel cigars
7-9 Examiner-Express news
11 Fulton National bank
13-15 Weber & Son jeweler
17-19 Woolworth 5¢-10¢, offices
GRANT STREET
31-33 Stauffer & Co. mens wear
35-37 Beyer & Co. dry goods
39-41 The New Era news
43 Dreamland vaudeville
43 Cain signs
45 Hanover shoes
47-49 Leinbach dept. store
51-53 Baer & Witmer clothing
55 Forney insurance
57 Hiemenz shoes
59 Frailey drugs
63 Grosch racket store
65 Singer Mfg. sewing machines
EAST ORANGE STREET
(South side only)
6 Hill Dental Co.
8 Keller jeweler
10 Lowell dentist
10 1/2 Lancaster Board of Trade
12 Zecher tailor
14 Darmstetter Photo Supply House
16 U.S. Express Co.
etc., etc.

West Side

2-4 Hirsh & Bro. clothing
6 Minnehaha Club, Dead Gamers Club
8 Lancaster Candy Co.
10 Hartz & Co. wholesale grain
12 Seldomridge grocer
14-16 Great Atlantic & Pacific Tea Co. groceries
Lanc. Business College, Comm. Travelers Ins.
18 Shaub & Co. shoes
20-22 Pirosh & Simmons Jewelers, Keystone Realty,
Dengler photographer, Rider painter
24 Lynch & Eby shoes
26-28 Groff & Wolf clothing
30 King cigars, Shreiner jeweler
32-34 American House hotel
36-38 Lancaster Trust Co. bank
40-42 REILLY BROS. & RAUB HARDWARE
42 1/2 Kepler Bldg. - Grand Army Hall,
I.O.O.F. Hall, Reynolds Hall
44 K. Myers millinery
46 Appel jewelers, Gerhart tailor
48 Manolopoulos bootblack
50 The Realty Co., Widmyer-Prangley Insurance
Jos. Hess, photographer, etc.
52 S. Shissler cigars
52 1/2 apartments
56 J.A. Miller drugs, National House hotel
58-60 Grand Union Tea Co. groceries
64 Stevens dentist
66 Gansman clothing
NOTE: "1/2" addresses usually allowed
access to upper floors



Thank You, Winnie!

Adorable (editor's description) Winnie writes: "Oh! I had a terrible time to get these cards. I went to all the stores and they were all out of them, then I went back to Darmstetter and at last he decided to print two for me and I think they are both good. I hope you will be pleased with them. That certainly was a fire I shall never forget.

P.S. Thank your Aunt and Uncle for kindness shown to me at there (sic) home. Remember me to all. With love, Winnie." The second PC from Winnie contained no reference to the fire nor her identification.



The RP postcard on which Winnie identifies Darmstetter as producer. An identical PC has the ink notation "About 7:30 A.M." Other photo PC scenes, in the same hand and with the same PC reverse, chronicle the times those photos were taken.

The Darmstetter Stores

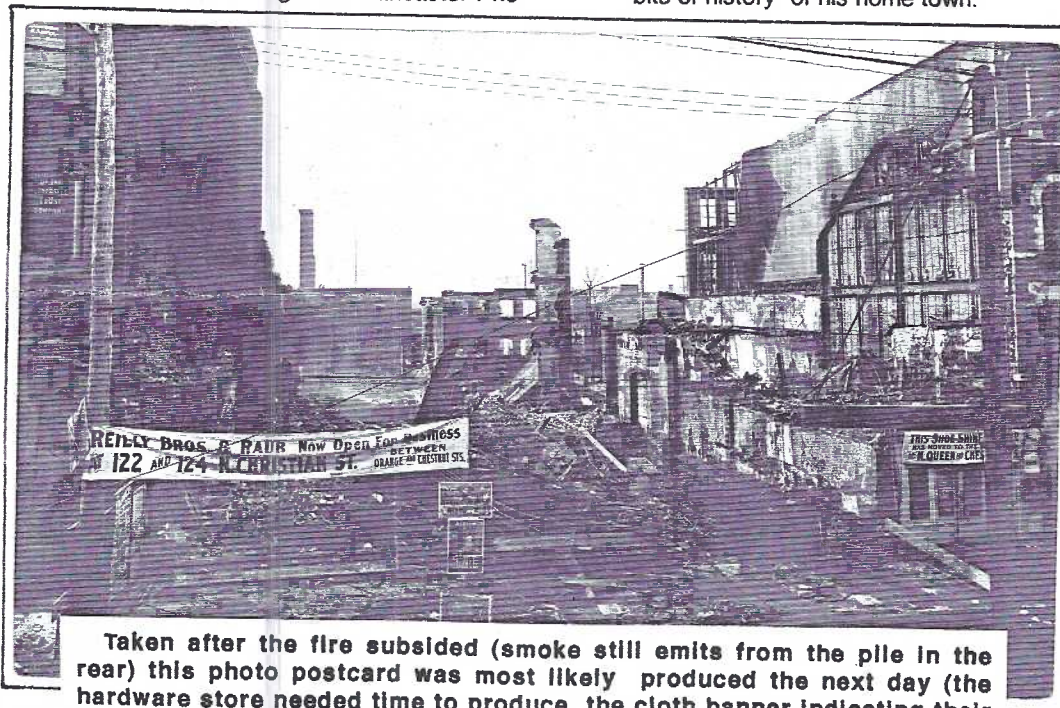
So it appears we have Darmstetter or a member of his staff to thank for this piece of local history recorded on postcards.

Many of us remember Darmstetter's camera and photo store at 35-37 N. Queen Street. They had moved there in 1930. Formerly they occupied 59 N. Queen St. where Mrs. Mary E. Darmstetter was the proprietor and she was assisted by her two sons, Adolph, her manager and Hugo, a clerk. They had been at this address since 1917.

The Darmstetter Store history actually began when Reverend Jacob Darmstetter bought the Lancaster Pho-

tographic Supply House at 23 East Orange St. in 1905. A few years later Darmstetter's Photo Supply House moved to the south side of East Orange on the second floor at #14. Jacob died in 1909 and the business remained opened under the capable supervision of his widow, Mary, for many years.

It's must have been one of Mary's sons or an assistant to whom Winnie referred on the back of her Reilly fire postcard. So we are indebted to Darmstetter for the Reilly Bros. and Raub fire postcards and to Winnie for the casual but significant reference on her card. Seldom can a postcard collector find such a splendid group of "tiny bits of history" of his home town.



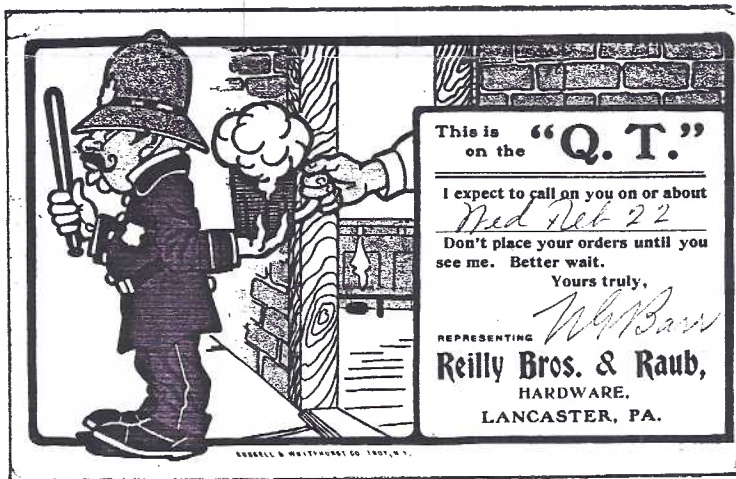
Taken after the fire subsided (smoke still emits from the pile in the rear) this photo postcard was most likely produced the next day (the hardware store needed time to produce the cloth banner indicating their new temporary business location at "122 and 124 N. Christian St., between Orange and Chestnut Sts." To the right you can also see the temp. sign for the shoe shine parlor at #48 (Queen St. Occupants Chart).

The Fulton Opera House exploited the location by quickly tacking posters along the sidewalk where it knew curiosity seekers would congregate. Kirk Brown And His Excellent Company were at the Opera House the week of Feb. 14 in two productions, Monte Cristo and St. Elmo.

REILLY BROS.' SALESMEN And Their Appointment Postcards

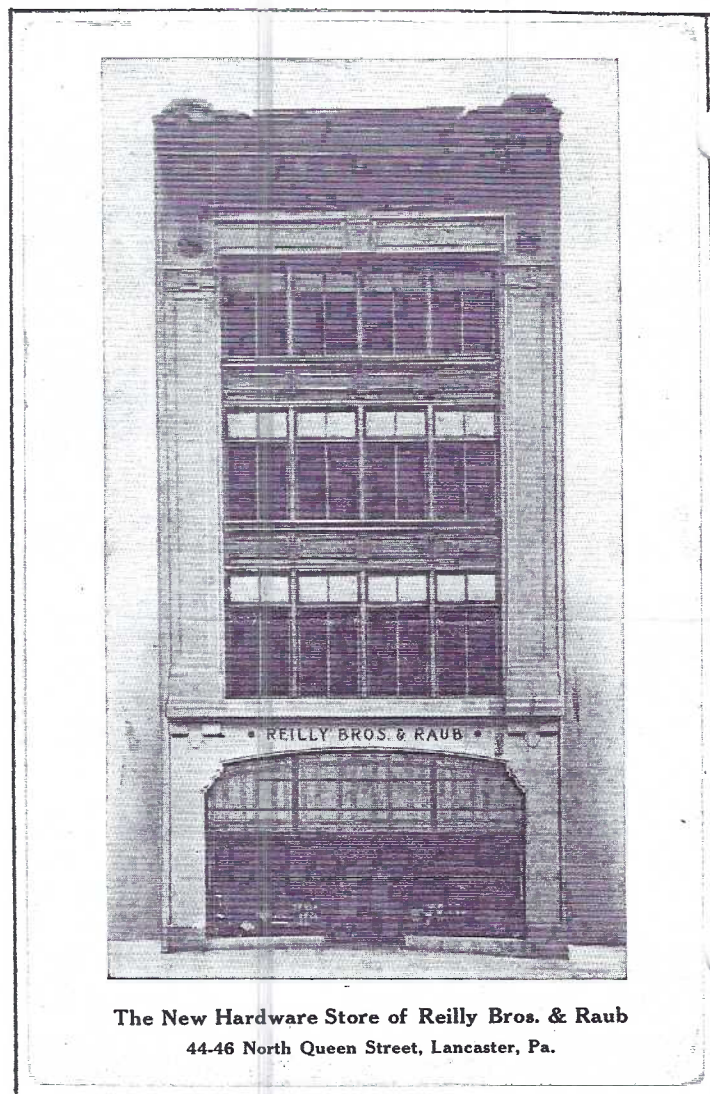
Postcards played an important part in the life of salesmen at the turn of the century - before telephones were popular. Rural general stores were quick to install the new phones but the postcard still played a supporting role. It was a reminder IN PRINT to the busy storekeeper that the 'hardware man' from Lancaster would be by in a day or two...better check that order list and add another carton of ten penny nails and what else?

We don't know how many salesmen Reilly Bros. and Raub employed at one time. The half dozen salesmen postcards we've seen include just three names. Perhaps we shouldn't expect a big team. One salesman's territory might cover the southern half of Lancaster County and several counties in Maryland as well. He might be on the road for several weeks.



U. Grant Barr resided at 118 College Ave., Lancaster. He mailed his comic cop card from Kirkwood on Feb. 16, 1906 to E.H. Mackey, New London, Pa. Lewis P. Eisen's home was 545 Green St. in Lancaster. The 1904 directory lists him as a clerk at Reilly Bros. Evidently by 1908 (when the card was mailed) he had been promoted to salesman. His comic black postcard was canceled Jan. 22 1910 and sent to Simon H. Heistand, a Salunga merchant.

John Lenhardt, a Millersville resident (also a Reilly Bros. clerk in 1904) sent his 'hand and pen' card (the only US postal card in the group) from Lancaster, Nov. 4, 1909, to John S. Fair, a merchant in Hinkletown. Lenhardt also sent the postcard "The New Hardware Store..." printed as



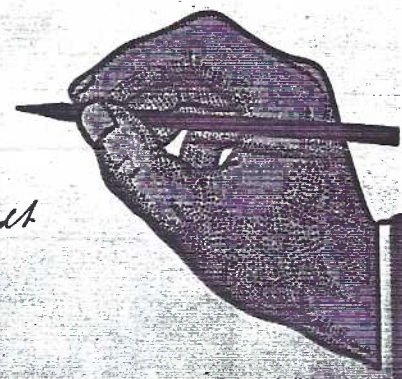
HAVE JUST PUT A NICE POINT ON MY PENCIL

I'll be around about
Ned Nov 8
for your order.

WAIT!!

Yours for business,

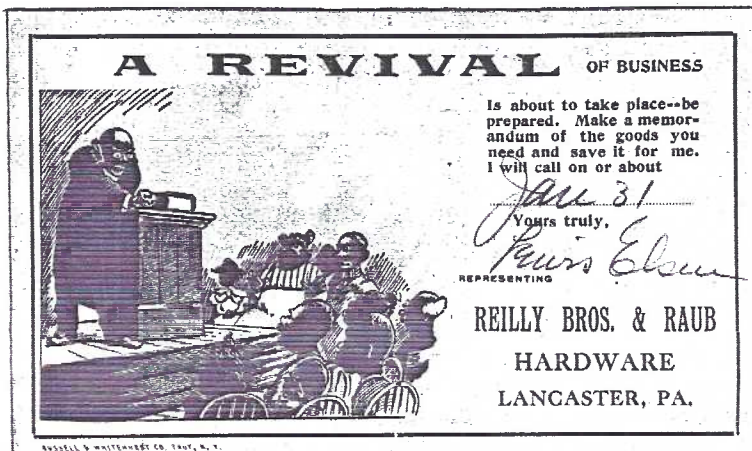
REPRESENTING
REILLY BROS. & RAUB
HARDWARE
LANCASTER - PA.



his salesman appointment card to Fair on April 20, 1912, and obviously proud to show off the fine building that rose from the ashes of the fire just two years previous.

The final salesman we've found is Harry D. Zook of 238 E. Walnut St., Lancaster. His comic cats postcard was mailed June 4, 1908 from Saville, Perry County, Pa. No doubt Saville was a stop-over on Harry's route and he was planning his future appointments.

The attraction of these cards lay in the reliability of the US mail. You'll note that most messages reminded the store owner the salesmen would keep his appoint-



ment just a few days after mailing the card.

Neither of the cards depicting the circus clown or the railroad track runner were used but still they are fine examples of early postcard history.

Except for the hardware store building PC which was printed locally by L.B.Herr & Co., the remaining drawn and partially colored cards are all stock items printed by the Russell & Whitehurst Co. of Troy,NY.

Additional salesmen appointment cards which YOU have for Reilly Bros. & Raub are welcomed as a follow-up article.



All postcards are reduced 30% except the "New Hardware Store" card.

FRED MEGSON SUCCUMBS Authored Postcard References

The postcard world lost a scholar September 29. Fred Megson passed away in his sleep only hours after he had planned several boards for an up-coming show in New Jersey. His loving wife Mary preceded him in death by two years. As dealers they called themselves The Postcard Lovers and they were two very sincere, intelligent people whose lives were one.

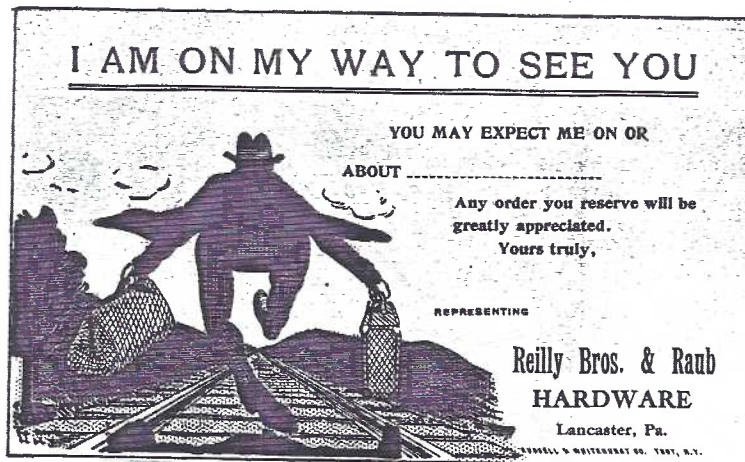
They authored two scholarly postcard references: American Advertising Postcards, Sets and Series, 1890-1929* which appeared in 1985 and seven years later (in another of Fred's pet categories) American Expositions 1870-1920.* Both books are recognized by experts in their respective fields as monumental works, particularly since the advertising and exposition categories are so vast and only a man like Fred would tackle such extensive subjects - with a lady like Mary to lend support.

The Postcard World will miss them.

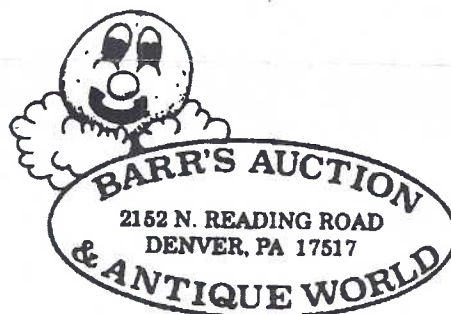
*These are both highly recommended books in our library. Treat yourself to some knowledge.

FINAL EXEC MEETING

President **Ruth Frankhouser** requests the 1997 officers and directors meet for a final time prior to the November club meeting. This would be Nov.16 at 6:30 pm in the church all-purpose room. Those expected to be present: V-P **Jim Ward**, Secretary **Jeannine Spece**, Treasurer **Barabra Mowrer**, Directors **Ruth and Harold Moyer**, **Walter Mowrer**, **Mary Darrenkamp**, **Ruth Yohe** and **Brian Frankhouser**.



John Klein Postcards



Exit 21
Pa. Turnpike

Saturday 10-5
Sunday 8-5

MEMBERSHIPS EXTENDED

Subscriptions also extended for 3 months

At the November 1997 meeting following, a brief discussion, the members present voted to extend ALL 1997 MEMBERSHIPS TO MARCH 31, 1998. In other words, memberships will now begin April 1 and end on March 31 of the following year. Your next dues period will be April 1, 1998 to March 31, 1999.

Several factors were considered.

- 1) The Club's treasury is at a "comfortable" level.
- 2) Collecting dues over the Christmas Season was a hassle. This will ease the job of the Membership Chairlady and relieve the rest of us who have so many other things on our minds over the Holidays.
- 3) It was a 'worry' for a few members that the Treasury was growing too large (c.\$3000). The club's largest expense is publication and mailing of **THE CARD** - about \$150 per month for 250 copies.
- 4) The entire membership benefits with this motion.

THANKS, JERE GREIDER

Many of you remember the days when we pleaded for your dues to be paid on time. Since 1993, when we held our first Expo, the club has been solvent. For this we have Jere Greider to thank. It was through his urging that we had our first Expo in 1993. So...Thanks to Jere and

MERRY CHRISTMAS TO EVERYONE!
ENJOY YOUR EXTENDED MEMBERSHIP!!

MEMBERS' ADS

FREE ads of 50 words or less should be in Editor's hands by the 15th of the preceding month.)

VISIT THE TABLE OF DEE DELCHER and **Bernie Francis** at the Towson Postcard Show on Dec.6 in the Crystal Room, Days Inn, I-695 exit 29 on Loch Raven Blvd. FREE postcard to anyone with a Lancaster ID! For directions, call Dee at 410-433-1532 or see any copy of PC Collector magazine. Hours: 10-5. No admission charge

OLD WINDSOR ANTIQUES 89 Bethlehem Rd., New Windsor, NY, 12553. Old Postcards bought and sold. Thinking about approvals? We would be happy to send you from our stock postcards on your want list. Send your list or ask for details. Agnes Cavallari, a member of LCPC. Ph. 1-914-564-6775.

THE FIRST FIVE YEARS is a 32 page illustrated book published by Jim Ward. Twelve copies left. Edition with full-color cover is \$6 ppd., the same with a b/w cover is \$5 ppd. Send check to Jim Ward, 1795 Kleinfeltersville Rd., Stevens, PA., 17578-9773.

MONTHLY EXHIBITS

The giant easel was in its place, thanks to Property Chairman Harold Moyer, but it held only four boards. The subject was SCARY. 74 members packed the room, including three guests. Outcome of the voting was -

HAROLD MOYER	FIRST	Boo-Hoo
ANNE STEINBERG	SECOND	Boo!
BOB KRAMER	THIRD	Scary/US Postal Service
HONORABLE MENTION		

JIM WARD Now This is Scary!

November's theme is Something for which you're thankful. December's is Christmas. Subjects for 1998's boards and single cards are welcomed by the committee.

NEW ROSTER!

Have You Changed??

It's in the works now! If you have changed in your name, address, phone, collecting interests, etc. **SEND THEM AT ONCE TO:** Gwyn Fulmer, 140 Buch Ave., Lancaster, PA., 17601. Please type or print so Gwyn (who's doing a monumental job) can include your info without error.

Tomorrow might be too late.

If you're not sure what info you last submitted (including a new member listing in **THE CARD**) send an up-dated listing to Gwyn at once.

She needs a full name, address (incl. zip code), phone (if beyond 717 include your area code) and postcard interests. If you know your membership number, include it, although she can find that with added time.

Be kind to yourself. Be kinder to Gwyn. **DO IT NOW!** (She collects Ocean City, NJ. Her grandson like trains. Wouldn't it be nice to include a PC if you have one?)

CUT-OFF DATE FIXED

Members as well as Public should take advantage of \$5.00 discount

At the October meeting it was made abundantly clear that orders for the 500-card View Book have been slow in coming from members. **SO A DEAD-LINE FOR DISCOUNT PURCHASES HAS BEEN FIXED FOR EVERYONE AT DECEMBER 31, 1997.** Local advertisements will be placed shortly and flier circulation will be stepped up so response from the general public will be forthcoming. Be certain you order by Dec. 31 so you can receive the \$5 discount on each book you buy. They'll make wonderful gifts and don't forget, when the 2,000 are gone, there'll be no more! The \$25 per book includes sales tax!

Type or print clearly

NAME.....

ADDRESS.....

CITY.....STATE.....ZIP.....

Number of copies.....x \$25.* =.....

*Includes Pa. Sales Tax

Add \$7 postage for each book

Total

Make checks payable to: **LCPC BOOK FUND**

Mail to: **LCPC BOOK, 136 RIVER BEND PARK, LANCASTER, PA., 17602**

REMEMBER - all orders must be received by December 31, 1997 to be eligible for the discount price of \$25 including Pa. sales tax.

NOTE: LCPC Strongly discourages mailing. Try to have someone pick up your copies at our Annual Postcard Expo at Farm & Home Center or a meeting.