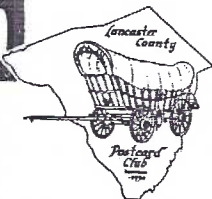


# The Card

MONTHLY PUBLICATION OF  
LANCASTER COUNTY POSTCARD CLUB  
LANCASTER, PENNSYLVANIA



MEETINGS: 3rd MONDAY  
FAITH UNITED  
CHURCH OF CHRIST  
1204 WABANK STREET  
LANCASTER, PA.

May 1997 Vol.8, No.9 #89  
NEXT MEETING - Mon. 7 pm  
May 19, 1997  
Buy, Sell, Trade from 5:30 pm

Yearly membership is \$8 (\$2 extra for each member at same address) payable to LCPC, c/o Dorothy Fry, 1050 Kleinfeltersville Rd., Stevens, PA., 17578. Ads: \$15 full pg., \$8 1/2 pg., \$5 1/4 pg., prepaid with copy. Classified ads FREE to members. Corres. to: Jim Ward, Ed. 1795 Kleinfeltersville Rd., Stevens, PA., 17578. Ph. 721-9273.

## PROGRAM

Members packed the room in April. It was FREE-FOR-ALL NIGHT. By 5 pm tables and chairs were assembled into a Mini Show. We very much appreciate the efforts these sixteen members went to, as they ran between drops and toted their wares: Dick Bishop, Norman Zimmerman, Elizabeth Graver, Howard Steinberg, Paul Weidman, Walter Mowrer, Earl Carver, Bud Heim, Merv Wenger, Mike Middleton, Bill Buckwalter, Bob Kramer, Gordon McKinzie, Ruth Moyer, Frank Coho and Jim Ward.

This was our second year for FFAN and it was VERY successful. Count on it again in 1998. (On the same note, there will be open selling at the June picnic meeting, too. Details later.)

MAY: LOCAL VIEW BOOK - FINAL DECISIONS

## EXHIBIT WINNERS

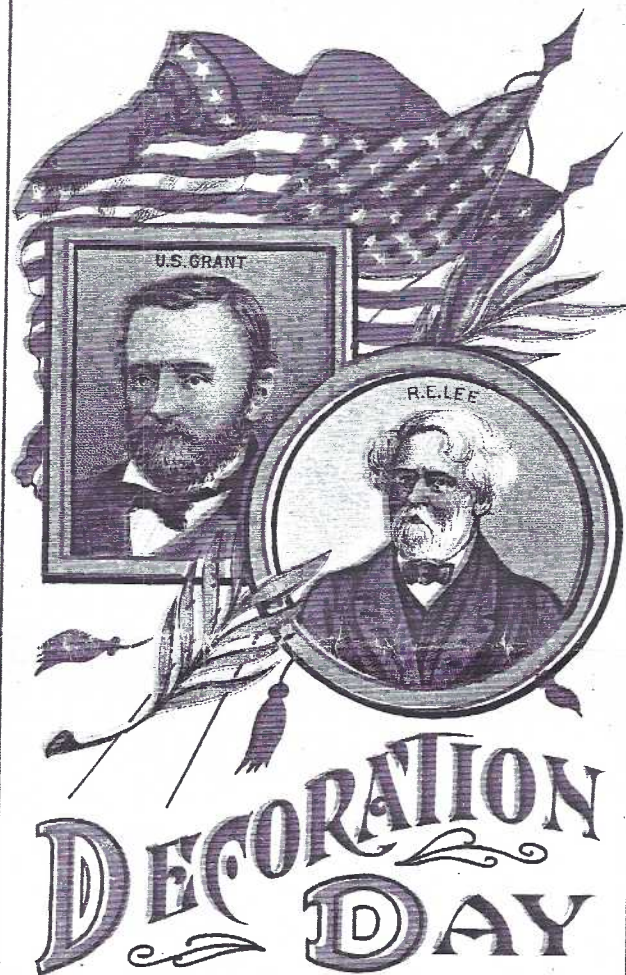
59 attendees took time out from browsing and buying to vote on April's exhibit cards showing TREES.

**Walt Mowrer** FIRST Donegal Witness Tree  
**Norm Zimmerman** SECOND Goats in a Tree  
**Mike Middleton** THIRD Trees: God's First Temple

### HONORABLE MENTIONS

**Ray Bubb** Ancient Bristlecone Pine Forest  
**Earl Carver** Great Banyon Tree  
**Frank Coho** Valle, Norway  
**Polly Curtis** Sausage Tree  
**Mary Darrenkamp** Famous Middleton Oak  
**Fran Hamilton** Salem Crofts Inn  
**Walter Mowrer** Pa.s Most Massive Tree  
**Jim Ward** Pa.'s Most Massive Tree  
**Ethel Zimmerman** The Witch Tree

Apologies to the participants for the mix-up in the April exhibit presentations. Single card exhibits are experiencing "growing pains". Dot Fry announced board exhibits in May = THE LETTER "M"; June = BEVERAGES July = FLAGS and a single card in August = SUMMER RECREATION. (The single postcard in Aug. will alleviate members' time concentrated on EXPO EXHIBITS.)



## DECORATION DAY

In the Good Old Days, LCPC members #100, #350 and #1 took flowers to school on a day towards the end of May. We left school early in the afternoon and, with our teachers, walked the seven blocks from George Ross School to The Lancaster Cemetery - a real hike for a little 6-year old. Even then, adults referred to it as Memorial Day, but to children who decorated each grave marked with a small American flag, it was Decoration Day.

Columbus, MS. is credited with first observing the holiday in the South; Waterloo, NY in the North; both in 1866.

## NEW MEMBERS

#453 **Barbara Groff** 322 Snyder Hollow Rd., New Providence, PA., 17560. Ph. 284-2346. Collects Lancaster City and County and especially Rocky Springs.

#454 **Mary Hartman** 3524 Second St., Bloomsburg, Pa., 17815. Ph. 784-5507. Mary's a dealer and likes linen trains, large letter PCs, World War II and maps of all types. (You must have had good geography teachers, Mary. That's why some of us are "nuts" about maps.)

#455 **Earl Bucken** 15 Canton Rd., Granby, CT., 06035-2302. Ph. 860-653-3842. Collects Hartford, CT. pre-1930's; covered bridges pre-1940's; NPW issues; famous people and hot air balloons. (Earl heard about LCPC through the Wichita Postcard Club's newsletter.)

# SEE IMPORTANT INSERT!

## Read page 8 for Special Announcement.



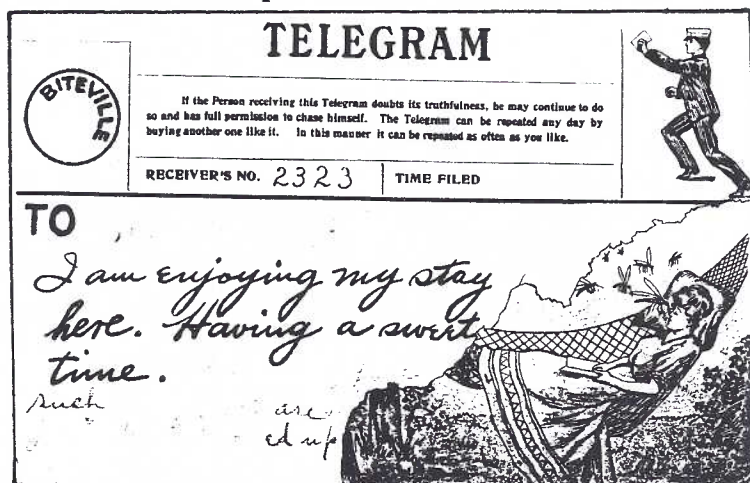
With nearly 200 subjects in my Topical File, I really didn't need another. But the inspiration was there. My generous family gave me a deluxe HAMMOCK after I moved to a quiet clearing in the woods... dozens of perfect trees for stringing up, stretching out and reading (and falling asleep). And I recalled passing over dozens of hammock PCs in the past.

They came hot 'n heavy. Most were studio-posed lovers (the challenge is finding a complete set). Comics included animals and sailors, and of course, kids experiencing puppy love. I discovered collecting one person in the hammock helped immensely to keep the collection under control.

Then Brian Frankhouser gave me two cards with messages referring to HAMMOCKS. So-o-o I read the messages (no more hammocks mentioned) but I thought you'd appreciate a few samples. I like the dated language. As you might imagine, loving correspondents used HAMMOCK LOVER postcards.

"Built for two, same as that swing down in E'ville (Pa.) Oh, that I would be there tonight." (no postmark)

"Hello Kidoo, I received your letter. Was glad to hear that you enjoyed yourself Sunday. I could not enjoy myself any better than I did Sunday. I have not forgotten the promises I made with you about the ring. I will surprise you one of these days... from the one who loves you best. XXXXXXX C.D." (no PM)



Equally appropriate in a MOSQUITO category is this Write Away PC in the 1908 Franz Huld Telegram Series

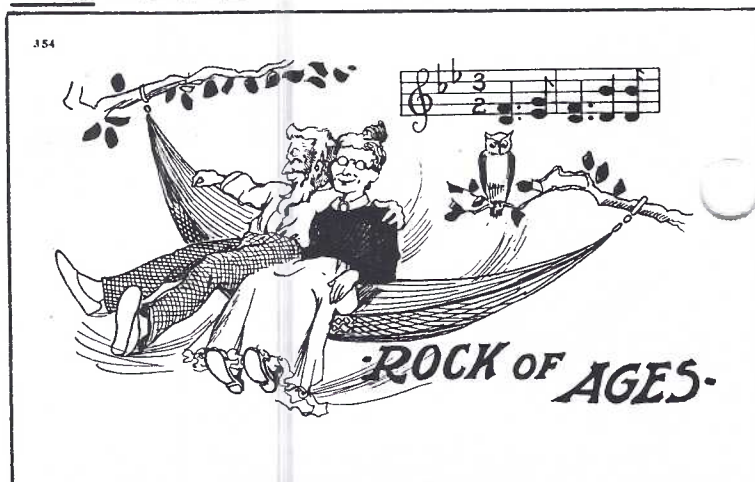
The pair referring to the hammock are from Lillie P. in Kent, Iowa to Laura Dixon, Creston, Iowa. The towns are about eleven miles apart in Union County. Sept. 10, 1910 "I expect you think I am it for not writing sooner. I haven't had any stamp until today. I wanted to thank you for your share in the hammock. I like it fine. Muskmelons are ripe now. You want to come and get your share."

May 3, 1911 "...I am sorry I didn't hear that old phone. It hasn't rang good since they moved the central office. I wish it would get warm so I could hang up my hammock. I am going to take a scoot up to the mail box. We've got six little black & white pigs this morning. They are aful cute..."

Some other non-lover messages:

A 1908 Kansas message between mothers - "Well, as my mind stays with you both this morn, I will write and see how you all are. What are you doing for pass-time? I am twisting my nose..."

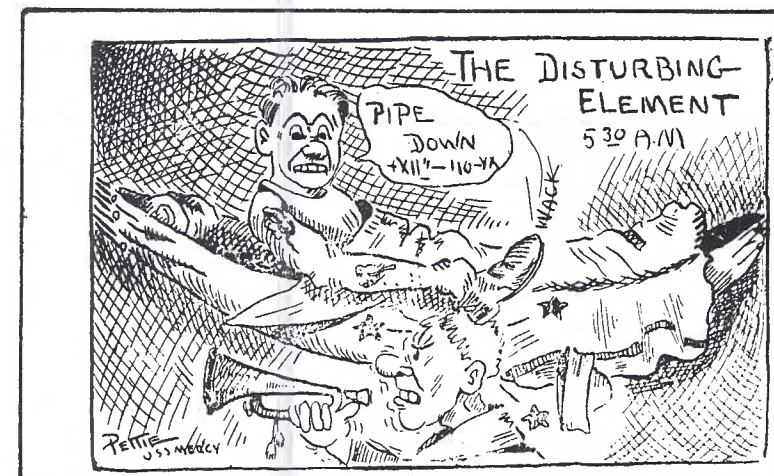
A Massachusetts student in 1915 - "...ashamed for not writing but I suppose you know how it is. Study, study, all of the evening. Having some great old times down at the pictures Sat. nights..."



Probably the first HAMMOCK card you'll collect (because there must be 8-10 varieties) is this Rock of Ages comic. It has no identified publisher.



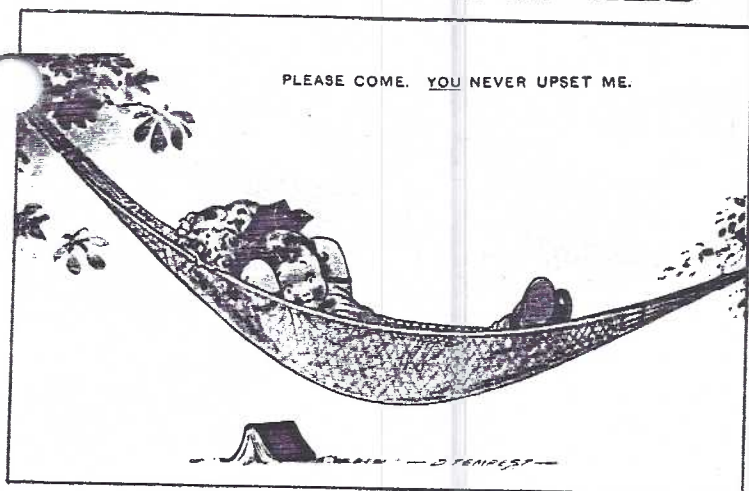
Above is a great Tichnor linen #70312/NH11 in the WW II Navy series, signed by artist Walt Munson. Below on an undivided back PC we see its counterpart, a WWI sailor. The artist signed his name and ship, "Pettie, USS Mercy". The card is monochrome on sepia stock.



An April 1911 message to Phila. father - "Dear Papa, we had our Easter entanment (entertainment) and we had a fine time. they had plenty of rabbits and Lucie and Mama got one to. From your little son, Edward."



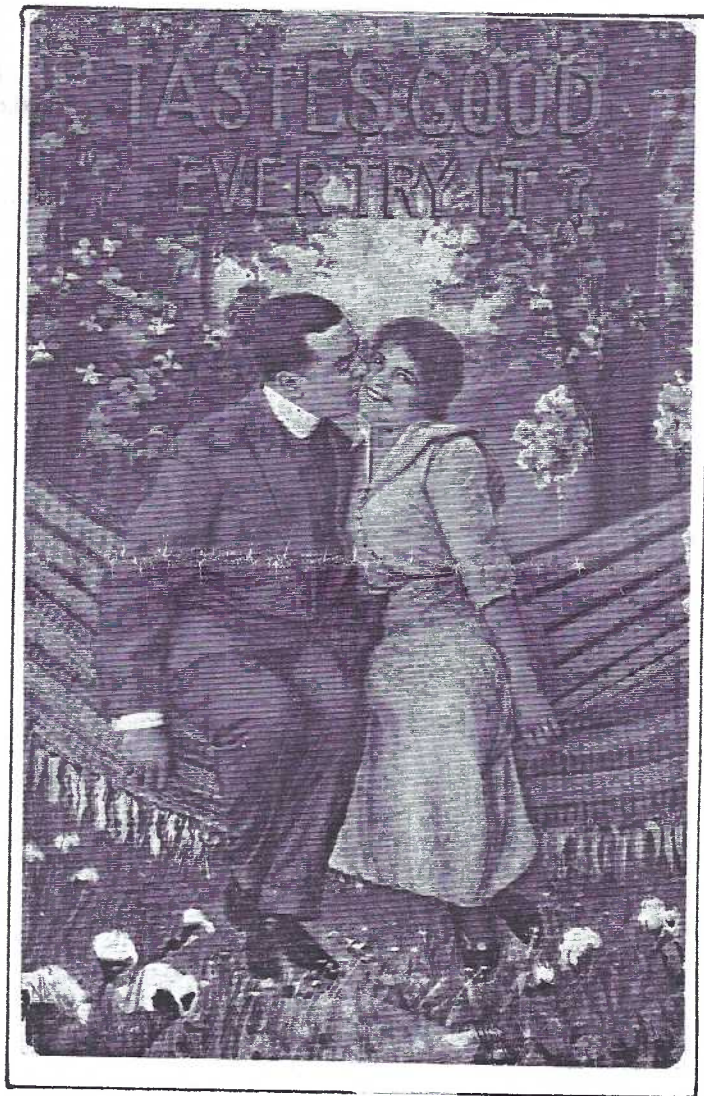
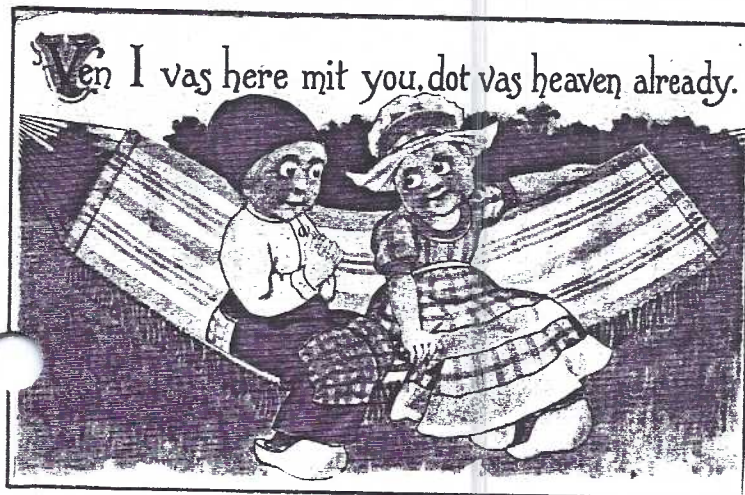
# FOR SWINGERS - SLOW SWINGERS!



The great house of Bamforth (England) staffed a host of comic artists but its premier artist was Douglas Tempest who set the tone for comics from the publisher that lasted five decades. Kid Comic series #1340 was printed in the USA.



Samson Bros. of NY were distributors of Barton/Spooner postcards (Monogram SB). The remaining three cards in our HAMMOCK article are by SB. Above is #S287. Below, with a Dutch flavor is #CS 463. The posed full color photo card, right, is from series 1333.



On two Samson Bros. Series 1333 lover cards are these "starry-eyed" messages. No postmarks. Note the respect given to the mail related words by using capital letters - "Just a line to say hello. I gotten your card OK..I hope you are enjoying this nice cool day. Those hot ones we have had it was just awfull here last week. Ijust thought I would burn up. I think it will be to bad if you cant get of(f) to come...they are some one up here that wants to see you real bad. Well I havent time to write much for its all most Mail Time and the Mail Box are a long ways of(f). They have started the Mail over here at last. Mr. Dodson is our Mail Man now you must write again soon. I love to hear from you if I cant see you. All ways A.B.R."

On the second card"...How many Valentines have you gotten. I think they have gone out of style up here I havent saw one this year only the one you sent me. I think that one is real pretty. Well what are you doing with your self... They are so much mud up here people can hardly get through it. I have spent the last 3 weeks in reading love stories. Ha Ha. dont you think I aught to know something a bout it now. Say excuse this writeing please. My pen is no good & joke is still worse..."



## LCPC's 1997 Postcard

Our club's entry into this year's NPW exchange commemorates 150 years of U.S. Postage Stamps and features, in vibrant full-color, 7 stamps including a copy of the first 5¢ Ben Franklin. The issue is limited to 200 numbered cards. If you're fortunate to have a membership number between 1 and 200 and wish that number, send for it at once (50¢ plus SASE) or phone 721-9273 and have it reserved as all cards will be available on a "first come" basis. As Jose Rodriguez would say, "Boy, you're tough down there".

**BACK ISSUES available for 25¢ each:** 1991 Buchanan; 1992 Lanc. Turnpike; 1993 First Expo; 1994 Tourist Sites; 1995 America the Beautiful; 1996 First Motion Picture. Make check payable to LCPC.

# NPW

May 4 -10, 1997

## Lancaster County Postcard Club

celebrates  
150 Years of  
U.S. Postage Stamps

Our 8th NPW Postcard

000 of 200



JOHN H. MCCLINTOCK

IN  
HONOUR  
OF  
THE TWO  
CO-FOUNDERS  
OF

# NATIONAL POST CARD WEEK 1997



DEE DEE PARKER

## MEMBERS' CARDS

**STAN HOPKINS, #64, 10**  
Kristen Heights, Parry Sound, Ontario, Canada P2A 2Z6. Honors NPW's founders. Will exchange. Stan's been exchanging NPW cards since Day One.



**JIM WARD, #1, 1795** Kleinfeltersville Rd., Stevens, PA., 17578. Commemorates 100th birthday of the Katzenjammer Kids comic strip. Will exchange this photo collage or sell for 50¢. 200 printed. Back issues also available. Send for list.

The Katzenjammer Kids Celebrate National Postcard Week 1997 and Their 100th Birthday As A Comic Strip At Middle Creek.



*Three generations sound the call to celebrate the  
14th National Postcard Week  
May 4-10, 1997*



*Chad, Chris and Earl Carver*

## MORE NPW CARDS

**EARL CARVER**, #18, 212 Pheasant Dr., Columbia, PA., 17512. Three generations of "slush pumpers". The elder Carver still plays trombone monthly. Will exchange or sell for 25¢. Earl's also a pioneer in producing and exchanging NPW cards.



**THE LEFFLER CHAPEL and  
PERFORMING ARTS CENTER  
ELIZABETHTOWN COLLEGE  
ELIZABETHTOWN, PENNSYLVANIA**

**NPW  
MAY 4-10  
1997**

**BETTY JANE WEAVER**, #400, 235 E. Plum St., Elizabethtown, PA., 17022. Original drawing by Betty of Leffler Chapel, Elizabethtown College. Will exchange or sell for 50¢. This is her first - and fine - attempt. 200 issued.

Pen and Ink by Betty Jane Weaver.  
My First NPW Card.

## CONDOLENCES

We wish to offer our sympathy to Norman Zimmerman whose mother passed away in April. Norman is such a friendly and faithful worker for LCPC. He surely inherited a portion of these traits from his mother.

### **Tommy Cannon, Member 293 Our Virginia Connection in the News**

Tommy Cannon introduced himself to your editor at the Spring Morlatton Show and showed me a front page story "It's A Small World" from Evince, an events publication that circulates in Danville, VA and surrounding area. The 3-page article focuses on Tommy's collection of local views of which twelve are shown.

In addition, Tommy approached his local bank in 1996 and 1997 and the team effort produced two handsome calendars of 35 local views each. "The Spirit of the Community Calendars" are loaded with community events. Proceeds of sales benefit the Danville Preservation Foundation.

Great idea, Tommy. Keep promoting postcards!



## FUTURE SHOWS

**Mt. Laurel, NJ.** May 2-3. S. Jersey PC Club. 1-6, 10-4, \$2  
**Towson, MD.** May 10. Towson PC, Paper Show, Days Inn at I-695, exit #29. 9-5. Free adm.  
**Hagerstown, MD.** May 23-24. PC Society Show. Howard Johnson Hotel, I-81, Exit #5. 10-6, 10-3. Free Adm.  
**Shamokin Dam, PA.** June 1. Susquehanna Valley PC Club. Days Inn, Rtes. 11 & 15. 9-4. \$1.50 adm.  
**Ft. Washington, PA.** June 20-21. Skillman PC Show. 10-7, 9-5. \$2 adm.

## MORLATTON SHOW

### Attendance Unaffected by Different Hours

A well-publicized 2 pm opening welcomed the usual line of 100+ collectors at the Spring Morlatton Show. By 4 pm Friday over 300 had entered the refurbished show room. Final count on Saturday evening was over 500. The reason for the delayed opening was a Good Friday Breakfast held for over 30 years by another group using the hall. **NICE SHOW, MORLATTON!**

## RESEARCH THAT PAYS!

THE CARD editorial staff (Gerald and Jim) have begun research into a local publisher, the LANCASTER PHOTO SUPPLY HOUSE. Information on this company was being assembled by your editor and Charlie Griffiths at the time of Charlie's death. Now Gerald and Jim would like to continue that work but need the help of all members who collect local real photo postcards.

We show you the three types of backs which LPSH used and, for our initial purpose, we wish you to identify your PCs with these numbered types. All of the cards will have undivided backs - so far as we know. And all stamp boxes by LPSH are outlined with tiny dots instead of solid lines. The difference in each type lies in the identification on the reverse as shown:

#1 - No identification of LPSH on reverse.

#2 - LPSH along left margin has double-line letters.

#3 - LPSH along left margin has single-line letters.

"Place / one-cent / stamp / here" in the stamp box shows a minor variation: types #1 and #2 use double-line letters while type #3 uses single-line letters. But this ID can't be used if your card has a stamp over the box!

Cards we wish to include in a final listing will be identified as LANCASTER PHOTO SUPPLY HOUSE either on the front or on the reverse or both. Eventually, we MAY solicit real photo cards which have the "POST CARD" type of LPSH but no other ID, but, for the present, hold these on the back burner.

Send us your list (no copies necessary at this stage) and include in this order, please:

TYPE, CAPTION ON POSTCARD, and CANCELLATION DATE (only dates you can read). Please don't guess!

Example:

#2 - Millersville, Pa., Main Street., no date

#1 - The Nevin Fountain, Lancaster, Pa.,  
Jan. 10, 1906

In the interest of local research. THE CARD will give a **FREE subscription for 1998** to the member submitting the largest list of authentic LPSH postcards. Gerald and Jim are ineligible. Final winner and runner-ups' lists must be confirmed by Gerald's and Jim's sight examination. Official deadline: June 30. Start NOW on research where you can be a big help!

Type 1 - No identification, but note shape of letters "P", "A" and "R".

POST CARD

THIS SIDE FOR THE ADDRESS

Place  
one-cent  
stamp  
here

Type 2 - Double-line letters in LPSH along left margin

LANCASTER PHOTO SUPPLY HOUSE  
Lancaster, Pa.

POST CARD

THIS SIDE FOR THE ADDRESS

*Mr. Frank Smith*

Place  
one-cent  
stamp  
here

Type 3 - Single-line letters in LPSH along left margin

LANCASTER PHOTO SUPPLY HOUSE  
LANCASTER PA.

POST CARD

THIS SIDE FOR THE ADDRESS

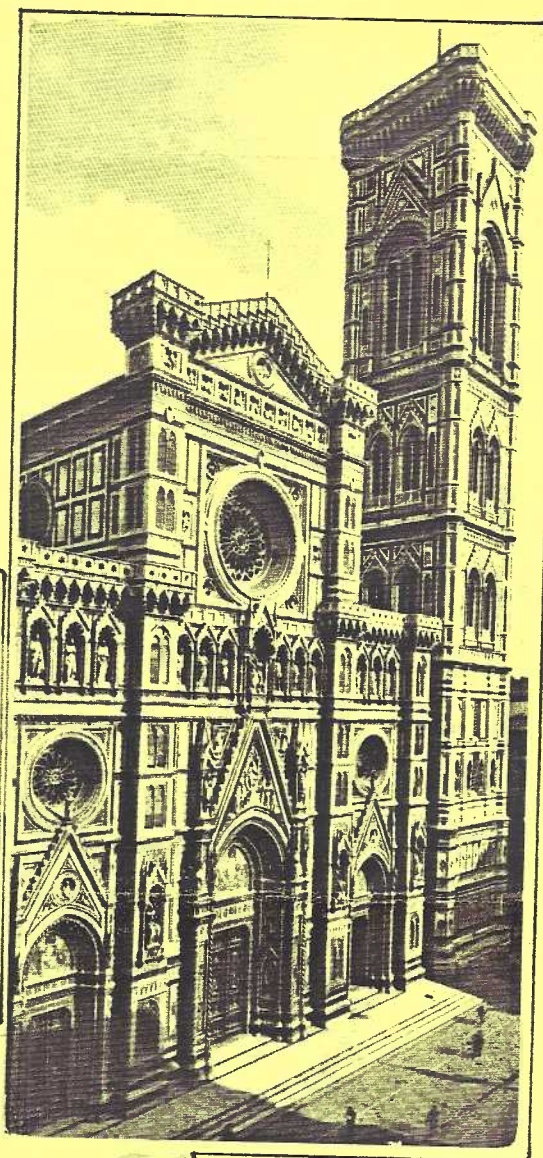
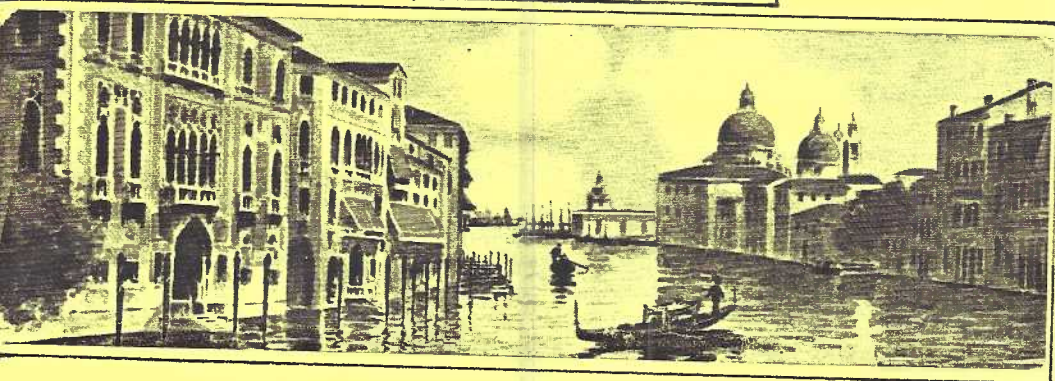
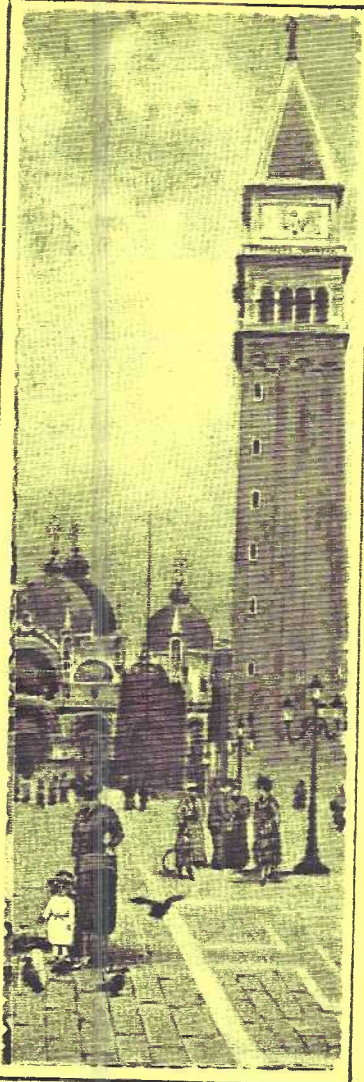
PLACE  
ONE-CENT  
STAMP  
HERE



# IT'S A POSTCARD; IT'S A BOOKMARK

Oddly shaped postcards always attract attention when you show your collection to friends. What makes a postcard a BOOKMARK POSTCARD? Simple. It's size! And these samples speak better than 1,000 words. The Piazza of San Marco, left, is multicolored w/deckle edge; below, the Grand Canal. Most Italian bookmark PCs are still found for 25¢ to \$1. They were often issued in sets. The chrome, below, the Cathedral at Firenze, is also 50¢-\$1. King Edward on the Book Post Card, far left, (Rotary Photo Series) is not rare, but easily worth 10 times the Italian bookmark PCs.

US bookmark PCs, esp. a real photo view like the Rutland, VT. by L.H. Brehmer is scarce. Its 1930 cancellation and very fine condition give it a value of \$3 to \$5 even with its nondescript view.





## **BOOK COMMITTEE\* REPORT to the MEMBERSHIP**

\*Any LCPC member is welcomed to become a member of this Committee if she or he is dedicated to work; to produce a quality book of local postcard views for the general public as well as the postcard collector; to strive towards an end result which will make LCPC proud to call itself the publisher.

1 Book will encompass the area within Lancaster County borders including the Susquehanna River. Tentative plans divide the book into the City and five or six County areas.

2 These eras of postcards are acceptable: pioneers, golden age, white border, linen, chrome (standard size). Chromes after the 1940's are excluded due to copyright infringements.

3 Postcards accepted will be local views or local advertising postcards, published and real photo type.

4 A member may submit up to ten (10) postcards. Each card must be accompanied by a Work Sheet provided at the April, May or June meetings. **Cards will be photocopied at the May and June meetings and returned to the owners.** Submission of cards doesn't necessarily constitute inclusion in the book, however, both common and scarce cards will be needed.

**NOTE - Every effort must be made for accurate and authentic information.** Answer as much of the Work Sheet as you can. Make every attempt to verify the information and possibly list the source of info. If you're in doubt - LEAVE IT OUT. A Work Sheet has been included in this May issue of THE CARD. You may duplicate it, but be reminded - should you return the Work Sheets with YOUR photocopies attached, your chance of them being accepted is limited in the event the copies are "muddy" or lack the proper contrast for study. **Front of the postcard goes towards top of Work Sheet's front page, reverse on the back of Work Sheet.**

5 Postcards will tentatively be gathered in Jan. or Feb. 1998. They will be scanned by the printer and returned to the owner in as short a time as possible (most likely less than one week). Neither LCPC nor any member of LCPC will assume liability for any postcard. However, you can be assured **every precaution will be taken to care for the cards for that short duration.**

6 The Membership voted, April 1997, to publish a case bound (hardcover) book of 2,000 copies.

7 The Book will tentatively contain at least 500 black and white postcards (actual or near actual size). It will include an introduction to local postcards, a brief caption for each postcard, an index of the cards, a rarity scale for the cards and an alphabetical listing of the contributing members (sans ID of card ownership).

8 To meet printer's expenses, LCPC will enlist a "pre-publication campaign" offering the book at a discount from the final published price. Tentatively pre-publication would be \$25 or less, published price \$30 or less. Pa. sales tax and any shipping fees will be added. LCPC members have been offered the privilege of buying at the pre-publication price for an indefinite time, however, **the Committee reminds members that moneys will be needed to pay the printer at the submission of copy, at the proof stage and at delivery = approximately March, May and July. SEE ENCLOSED PLEDGE FORM.**

9 In addition to pre-publication money, the Committee has begun a campaign for **private loans from members.** A pledge for each \$500 will return the member **ONE FREE BOOK** upon publication. The loans will be solicited sometime in Spring 1998 and expected to be paid in six to eight months, depending on sales which will begin at our August Expo. (This is better than a 10% return on your investment.) At this writing, we have received pledges totaling \$9500 from six LCPC families. **SEE ENCLOSED PLEDGE FORM.**

10 **We suggest each LCPC member try to sell four (4) books** to reach the goal of 2,000. We will also hope for sales through advertisements, by word-of-mouth, fliers, and possibly book stores. **PLEASE TRY TO DO YOUR PART.**

11 You may not be a view collector, but you could have a talent we can use: local historical or geographical information (especially in your neighborhood), research, sorting, writing, proof-reading, promotion and especially **SALES! SEE ENCLOSED PLEDGE FORM.**



This is the first stage of development for the LCPC Post Card Book. Bring your favorite Lancaster County post cards to the May meeting or June picnic. Ideas for topics include street views, banks and businesses, disasters, churches and schools, sports, residences, personalities, advertising, musical organizations, etc., etc., etc. Please complete as much of the bottom half of this sheet as you are able. Your post card will be photocopied on the top half of this sheet and used in the initial editing process. If your post card(s) make it through the edit process, you will be asked to submit it/them early in 1998 to the printers. We will deliver post cards to the printer in small batches, so they can be returned to the owners more quickly. The greatest care will be taken in handling the post cards, but the LCPC cannot be held responsible for lost or damaged cards.

Post Card Owner's Name \_\_\_\_\_  
Post Card Owner's LCPC Membership Number \_\_\_\_\_  
Estimated Date of PC photo \_\_\_\_\_ Postmark Date \_\_\_\_\_  
Type of PC (real photo, golden age, white border, linen, chrome) \_\_\_\_\_  
Location of PC photo (city, borough, township, street references, etc.) \_\_\_\_\_

Narrative (include historical information, background, and/or anecdotes) \_\_\_\_\_  
\_\_\_\_\_  
\_\_\_\_\_  
\_\_\_\_\_  
\_\_\_\_\_  
\_\_\_\_\_  
\_\_\_\_\_  
\_\_\_\_\_  
\_\_\_\_\_







# CHANGE OF MEETING LOCATIONS

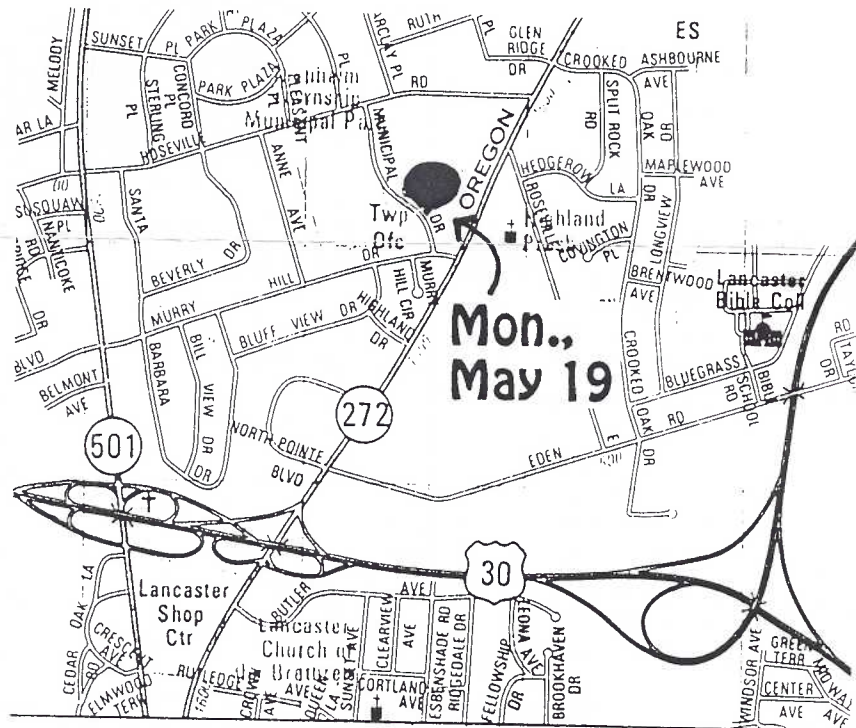
## KEEP THIS INFO. FOR REFERENCE

NOTE- This page was added while the first 8 pages. of THE CARD were at the printer.

**MAY-** At 9 am, Apr. 29, we received word that the All-Purpose room of the church would be unavailable to any renters in May. Faith United Church of Christ is celebrating its 100th Anniversary and the room will be locked since it contains church historical records and relics. By 11 am, Apr. 29 we had been given special allowances by the Manheim Twp. Bd. of Commissioners to use the **Police Dept. Meeting Room** for the May 19 meeting. (see map) We had met in this room from April 1990 to Dec. 1991 through the efforts of Mary Darrenkamp. The location is central. It has ground-level entry, restrooms and good lighting. Parking is curb-side. **Please obey police-only spaces.** Small tables are available for set-ups. We may enter AFTER 5:30 pm. Exhibit easel will be there to accommodate your boards of the letter "M".

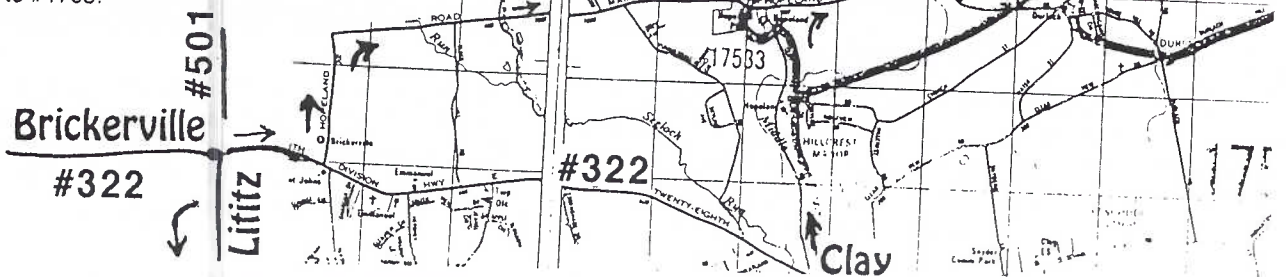
NOTICE: Please bring your Work Sheets and postcards to be photo-copied as planned. This copying will begin at 5:30 and continue throughout the evening. Program will be a **final discussion of major policy** concerning the Book of Local Views. We have been given very attractive costs by Science Press (The Mack Group) for one signature - 16 pages - of full-color postcards and this matter will be considered among other things.

Bring your questions. We try to resolve the issues.



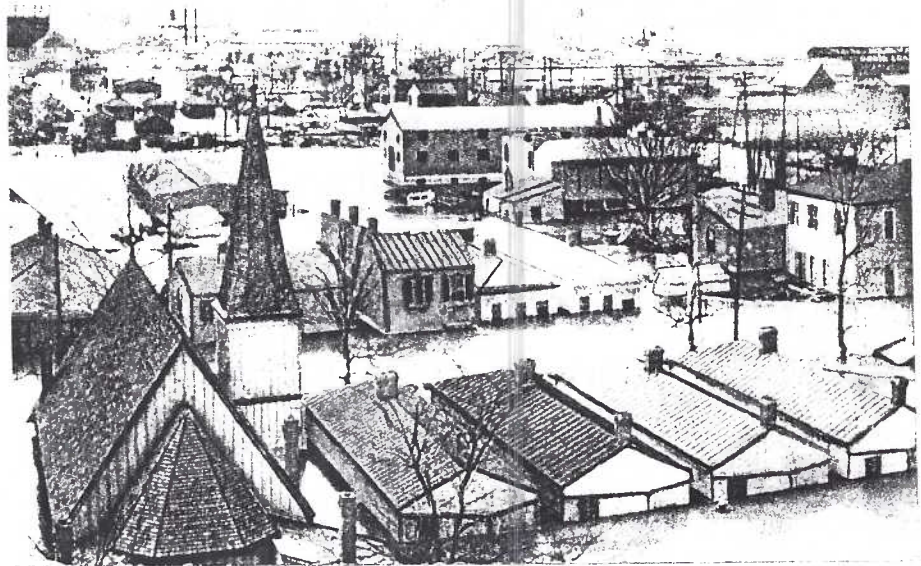
**JUNE** - As planned, the meeting will be at Jim Ward's home next to Middle Creek Wildlife Management Area. (see map) At the moment this is the schedule: arrive any time AFTER 12 noon and set up cards to trade, sell, or just show with a break for picnic meal at 1 pm, a short business meeting, exhibit boards of BEVERAGES and then back to buying, selling and browsing. All the while additional postcards will be copied and Work Sheets filled with information. Let's make it day of activity: fun and relaxation. There'll be sun and shade as you choose. The MCWMA Visitors Center (free admission) just a mile away, is a "must" if you appreciate the Outdoors. Please bring chairs, tables for set-ups.

From Brickerville, take #322 east; turn left on Hopeland Rd. or go on to Clay and left on N. Clay Rd. Proceed to Hopeland, continue east to Kleinfeltersville Rd., left over PA Turnpike and through the woods to #1795.





FLOOD 1907, LOUISVILLE, KY



## ANOTHER NPW CARD

Our good friend from Camp Hill, Anne Valsing, sent us her NPW card on Mar.31 but it was waylaid for nearly a month. Ann always chooses such appropriate subjects and 1997's is no exception.

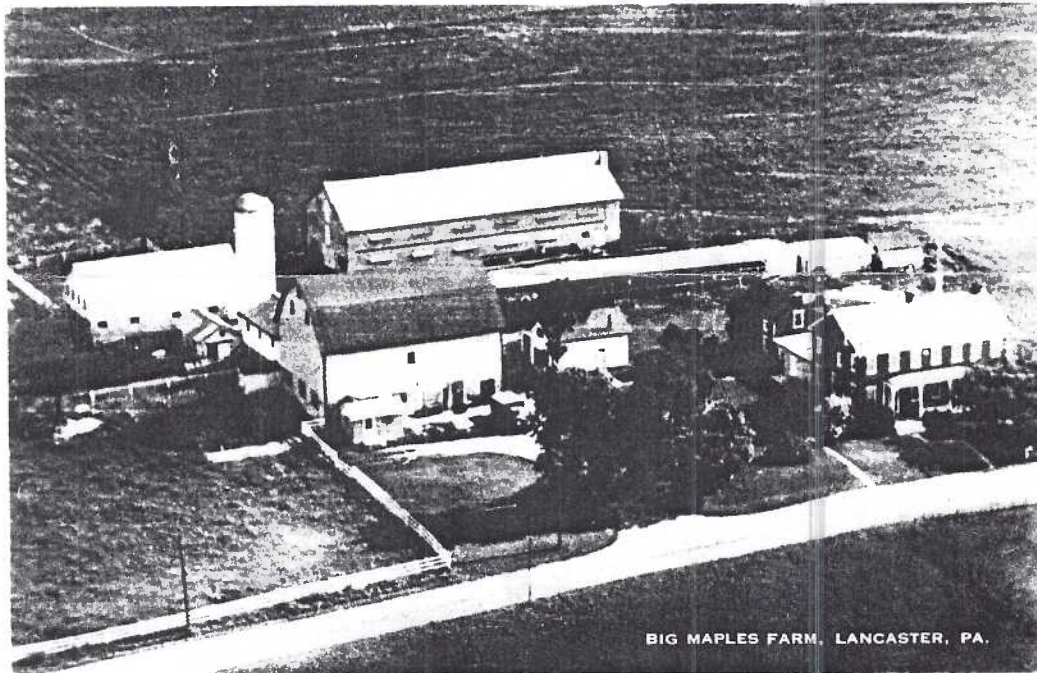
"I chose this subject because I was reminded so vividly of the 1937 flood in Kentucky this Spring. I was very young when I lived through the '37 flood and hoped I would never know another - and here, 60 years later, IS another.

Although I have some '37 flood cards of Louisville, all are black and white and I was unsure of the copyright. I have none of Paducah, where I was born. So I decided to choose still another flood - in 1907 in Louisville - with no printer or publisher listed.

I think a recurrence 90 years later should help people bear in mind to be careful where you live, for you never know when the next flood will come.

I know Pennsylvania has had some devastating floods - the worst being Agnes in 1972. I have no pictures of that flood though I have some books about it. Perhaps some of your readers will share their pictures. I would be glad to help make a postcard. I was sorry I could not use a PA. card."

Anne will trade her NPW card for yours or sell one for \$1 plus SASE. (Her FLOOD 1907, Louisville, KY card is full-color on heavy white index stock and, in addition to a personal message, Anne has added a hand-colored bluebird.



## WHEREZIT?

Howard Steinberg has had this Big Maples Farm scene for awhile (so have the rest of us, Howard). Who can identify it? It's too much like REAL Lanc. County to be a generic view, and Artvue, the publisher, didn't engage in generics. HELP!

ED.NOTE: The last minute notification for the May meeting necessitated an additional page. In the interest of economy, we decided to make both sides full, since there's always too much to fit in every time and it's here anyhow

THE CARD  
STAFF: D.Fry, G.Hostetter, J.Rudisill, J.Frank  
EDITOR: J.Ward. ADDRESS CHANGES: Gwyn  
Fulmer. CIRCULATION: Harold Fry