

The Card

MONTHLY PUBLICATION OF
LANCASTER COUNTY POSTCARD CLUB
LANCASTER, PENNSYLVANIA

MEETINGS: 3rd MONDAY
FAITH UNITED
CHURCH OF CHRIST
1204 WABANK STREET
LANCASTER, PA



Mar.1997 Vol.8, No.3 #87
NEXT MEETING - Mon., 7 pm
March 17, 1997
Buy/Sell/Trade from 5:30

Yearly membership is \$8(\$2 extra for ea. member same address) payable to LCPC c/o Dorathy Fry, 1050 Kleinfeltersville Rd., Stevens, PA. 17578. Ads: \$15 full page, \$8 1/2 page, \$5 1/4 page, PREPAID WITH AD COPY. Classified ads FREE. Send ads, articles and correspondence to: Jim Ward, 1795 Kleinfeltersville Rd., Stevens, PA., 17578.

NEW MEMBERS

- #440 DOROTHY CRISSMAN 1139 Wabank Rd., Apt. H203, Lancaster, PA., 17603. Ph. 293-9378. Collects Lighthouses American Indians, Lancaster City and County.
#441 JOE RUHL 2022 S. Queen St., York, PA., 17403. Ph. 845-2414. York City and County, St. Patricks Day, College Girls, R.F. Outcault and General Interest.
#442 BARBARA HAUBRICH 825 Thompson Ave., Annville, PA. 17003. Ph. 867-0361. General interest.
#443 MARTIN HAUBRICH Same as Barbara but he also likes Autos, PA. Turnpike, Route #22 and Outhouses.
#444 RON MENCHINE P.O. Box 1, Long Green, MD., 21092, Ph. 410-592-7152. Baseball Advertising, Major League Baseball Players and Teams, Political Campaign PCs and Political Comics. ED. NOTE: For many years Ron was the radio voice for the Washington Senators. More recently, he authored an excellent book A Picture Postcard History of Baseball. This fully illustrated guide contains a priceless collection of oldtime BB stadiums and players with pricing index. You'll find it in LCPC's library.

We welcome these new members and hope they'll be active in our meetings and at the August Expo.
Change of Address for John Aurand, #147: Wynnewood, 855 N. Park Rd., #G-302, Wyomissing, PA., 19610



EXHIBIT WINNERS



Dry weather and a headline-making speaker created a crowd of 87 including 14 guests! Everyone found a seat midst the painters' ladders and brushes and we thoroughly enjoyed red and white "Lovey Dovey" boards.

WALTER MOWRER	FIRST	To My Own Valentine
VERONICA BECHTOLD	SECOND	Love Them Lovers
SUSAN GLASS	THIRD	The Language of Love

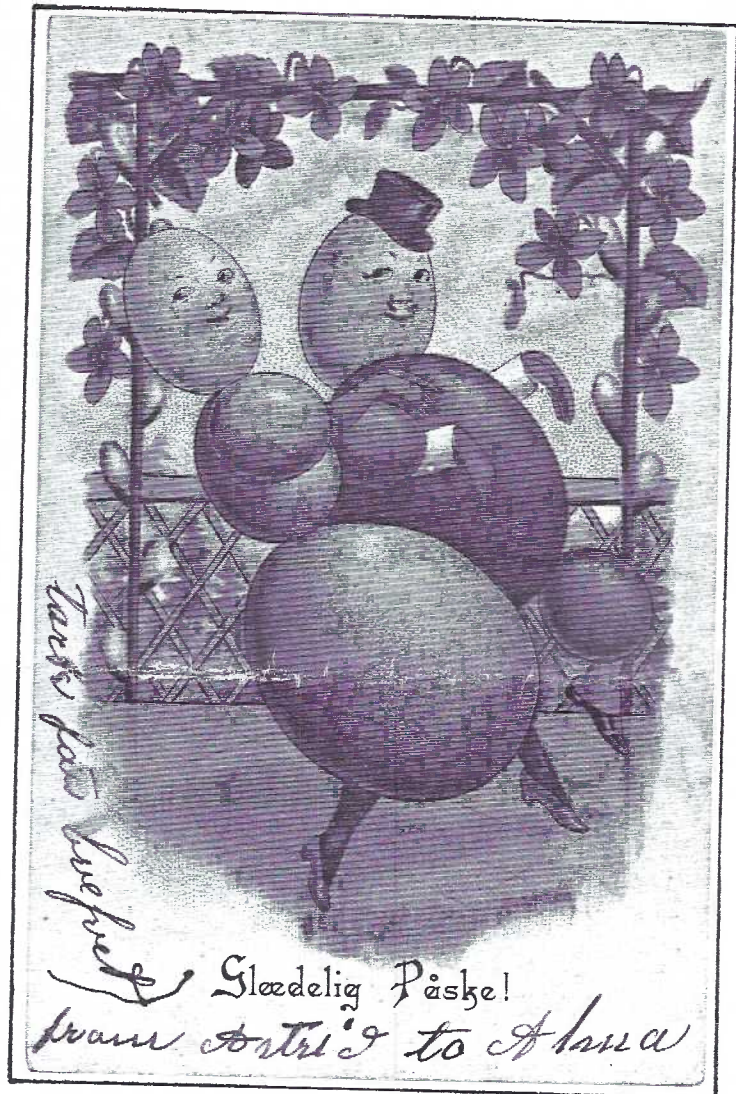
HONORABLE MENTIONS

DON DAVIS	Post Card-iac
BARABRA MOWRER	Valentine Greetings
HAROLD MOYER	Love Messengers
RUTH MOYER	Lovey Doves
ANNE STEINBERG	Young Love

Using the opaque projector for a single card per exhibitor, will be CHILDREN in Mar. and TREES in Apr..

MEMBER-DEALERS AT FEB. MEETING

Once again the room was surrounded with members selling cards: Howard Steinberg, Bill Buckwalter, Mike Middleton, Dick Bishop, Jerry Kotek, Ruth Moyer, Jim Ward, Bob Kramer and Gordon McKinzie. Thanks!



Glædelig Páske!
from Antti's to Anna

This multi-lingual backed postcard was mailed from NYC, Apr. 14, 1906 to Peace Dale, RI. In his PC Collector's Dictionary and Encyclopedia (1960) Walter Corson says "Glædelig Páske" is Danish for Happy Easter! Mr. and Mrs. Malt T. Egges parade beneath an arbor of violets, she in pink shells and slippers, he in pastel green. For more Fantasy Easter Egg Postcards see pg. 8.

IN SYMPATHY

LCPC wishes to extend deepest sympathy to Ethel Zimmerman whose brother passed on in Feb. as well as to Harold Fry whose sister also passed away in Feb.

CLASSIFIED ADS

CLASSIFIED ADS are FREE to any member. Keep to 50 words or less. Copy must be to editor by the 1st of each month to appear the following month.

Clarence Armbruster wants to sell some views, greetings, comics, disasters, foreign, in all PC eras at 25¢ to \$1+. Will answer all mail w/SASE. Write: 1616 Liberty St., Apt. 801, Allentown, PA 18102.

Will pay \$4 or more for any ugly Valentine PCs I need having red, blue or yellow borders marked Series 308. Buy other "vinegar Valentines" too. Jim Ward #1.

Buying Bermuda postcards published by Teich for the Yankee Store between 1930 and 1960. Jack Walsh #365

100 POSTCARDS FOR 25¢

Harold Galebach Uncovers Dad's Correspondence

The Acme Amusement Co., 252 W.36th St., New York, NY informed John K. Galebach, Jr. on Apr. 3, 1914: "Our supply of 100 cards for 25¢ run(sic) out. We had ordered more of them and expect them to be delivered at any moment. As soon as recd., your order will be filled. Resp. Yours, ACME AMUSEMENT, Per Q"

Sixteen year old John lived on a farm near the Lancaster-Lebanon County line (Manheim, Pa., RD #6) and replied soon after on Apr. 10, 1914: "Dear Sir, I received the '100 cards for 25¢' and am well pleased with them. Enclosed you will find a 2¢ stamp for which please send me your large catalogue by return mail. Resp. Yours, John K. Galebach"

LCPC member Harold Galebach finds he cannot identify specifically the PCs his father received that day from other memorabilia he has unearthed. But he does have other advertising material from Acme that arrived over 80 years ago including membership application form for The Acme Post Card Club of the World and correspondence from members and a partial list of "Reliable Exchangers". (see illustrations). Are any LCPC members related to these people? Do YOU have any information on The Acme PC Club?

100 POST CARDS 25¢

We will send you an assortment of high grade postcards consisting of Plain and Colored Views, Comics, Flower, Motto, etc. for only 25¢, prepaid. These cards are especially selected for the use of Exchangers and you should get a big supply while we have them. 25¢ per 100; prepaid, or \$2.00 per 1000; you to pay expressage.

The ad that lured John Galebach in 1914.

As its name implies, Acme sold more than postcards. Its illustrated catalogue listed items that would delight any child - "all leather Bill Book and Change Holder, 30¢; an Organolia (a mammoth horn with accordian-like keys, \$1.50; the Flying Screecher, 10¢; The Great North Pole Game (who got there first? Peary or Cook? 10¢; 4" Surprise Telescope, 25¢; Resurrection Plant, 10¢; Boy's Box of Tools, 18¢; Beautiful Bead Necklace, 13¢; Checker Board ('the men can't fall off the board'), 10¢".

If you were an adult prepared to equip your home there was a Guaranteed Sewing Machine for \$17.80, a 4-piece Parlor Suite for \$29.50 or a Sears Motor Car for just \$480.00!

The Double-Barreled Breech Loading Shot Gun for \$13.50 Harold's dad didn't buy, but he does have his dad's Stevens Crack-Shot single shot 22 caliber rifle that John was awarded for selling salve with another company. Oh, for the good old days!

READ THIS

THIS is a special circular issue of THE ACME, and contains only a partial list of A.P.C.C. Members. THE ACME contains a big list of P.C. Collectors in all parts of the World—besides interesting and pertinent articles. Copy with your name and address in, sent to all members.

EXCHANGE P.C. with each of the following. Send a good local view card and write your name and address plainly. Write on each card "ACME."

MEMBERSHIP RATES

in the ACME POST CARD CLUB are as follows:— Trial membership of 1 mo., 10¢, 6 mo 25¢, 1 year 50¢. Special offer: 1 year's membership and a special notice of 21 words in each issue \$1.00. Copy of THE ACME will be sent to you monthly. Remember, your name and address is printed in the List each month of your membership and sent all over the world.

PARTIAL LIST

Miss Rose Eden, 5244 S. Justine, Chicago.
Edward Scharth, 1053 Staunton, Alton, Ill.
A. W. Manning, 222 Park, Lawrence, Mass.
Harry J. Cook, 38, Rahway, N.J.
Mr. Jas. Haigh, Fire-Dept. Hose No 1, West Ave., Pawtucket, R.I.
Flossie Jefferson, R. No. 3, Box 42, Arlington, Wash.
H.A. Blessing, 320 South, Galion, Ohio.
Jane McClellan, L.Box 404, Janesville, Wis.
V.A. Valles Cuera, Texas.
Harry A. Brown, 293, Auburn, Maine.
Frank Moore, Biggs, Oregon.
J. Salzilla, 84 Courtland, Providence, R. I.
Miss Pearl Dutchess Westfall, Spencer, Ind.
Miss Julia A. Russo, 692 Clason Ave., Brooklyn, N.Y.
Mrs. Isobell Brailey, 68 River, Pawtucket, R.I.
E.L. Gray, 10 Parkway, Stoneham, Mass.
Eugene Simard, Big Point, Ont., Can.
Geo. E. Elscaser, 301 Day Ave., Niles, Mich.
Herman Galle, R. 3, New Ulm, Texas.
Thos. L. Goodman, R. 1, Coffeerville, Ala.
Mr. Guy Woodaell, 321 S. Oak, Ottawa, Kans.
A.C. Lindsell, 93 Victoria Ave. Worcester, England.
Louis Piatkiewicz, 2061 W. 10th St., S. W., Cleveland, Ohio.
Wm. de B. Fairman, 2230 E. Cambria, Philadelphia, Pa.

For more names of RELIABLE Exchangers see the regular issues of THE ACME. Not so big a paper as some— not so many pages as some— but circulated in more sections of the World than any other list published. You want postcards and it is for postcards that you join an exchange—not for a large magazine with a few hundred circulation. Be sure that you join the ACME POST CARD CLUB and you will be sure to get Post Cards from everywhere.

POST CARD

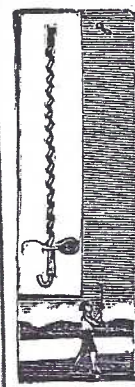
Photos of Popular Moving Picture Players !!

These rare cards are HIGH GRADE PHOTOS of all the popular Moving Picture Actors and Actresses whom you have seen time & time again as their faces have been thrown upon the screen. You have your favorites—what nicer than to have their photos in your collection? Best Post Card Photos published—obtained by us from a Motion Picture Co.

Sample set of 6 Cards, prepaid . . 10¢.

Assorted set of 10 Cards, prepaid . 15¢.

Assorted set of 20 Cards, prepaid . 25¢



THE FLYING SCREECHER.

Here, boys, is an article that will actually fly, and fly so high that it often goes out of sight. It not only flies, but whistles and shrieks on its way up. If you want to have some fun, get out in the street or park and send it up, see the crowd stop and rubber—they will think Halley's Comet is coming. The flyer is made in the shape of a propeller, fits a flat spiral steel shaft, and when let off it revolves at a tremendous speed and propels itself through the air at a terrible rate and the whistle simply shrieks. When it comes down you can send it up again. Cannot get out of order and will last for years if you don't lose it. Sample by mail, 10¢.

MEMBERSHIP RATE APPLICATION FOR MEMBERSHIP THE ACME POST CARD CLUB OF THE WORLD

1 Month, 10¢.
6 Months 25¢.
12 Months 50¢.

SPECIAL: Your name in 12 months and a Special Notice of 21 words for 1 Dollar.

Acme Amusement Co.,
252 West 36th St.
New York, N.Y.

ACME AMUSEMENT Co.,

Enclosed please find..... for which

enter my name and address as a member of A.P.C.C. for..... months. I promise to promptly return all favors, sending a card for each card I receive.

Name.....

Address.....

Date.....

THE LOVE BUZZER

make your friends jump a foot! Hand this and when they open it, they will get the scare of their lives. or, you can send it by mail. A harmless joke with lots of good laughs in it.

YOU CAN make money sending the ACME POST CARD CLUB blanks to your friends, each one pays you 20 per cent commission and means a lot of easy money for you without any effort on your part, simply place one in your letter. Cash paid to you every month. Send 10¢ for postage on a lot of these and begin to make your postcard exchanging be profitable as well as interesting.

BIG CATALOGUE

of new and up-to-date Tricks, Jokes, Novelties, Books, etc. Sent to any address if you will send 2¢ stamp for postage on same.

WE ACCEPT clean unused postage stamps the same as money but prefer the 1¢ denomination. Address all letters, orders to

ACME AMUSEMENT CO.,

252 WEST 36TH

NEW YORK,

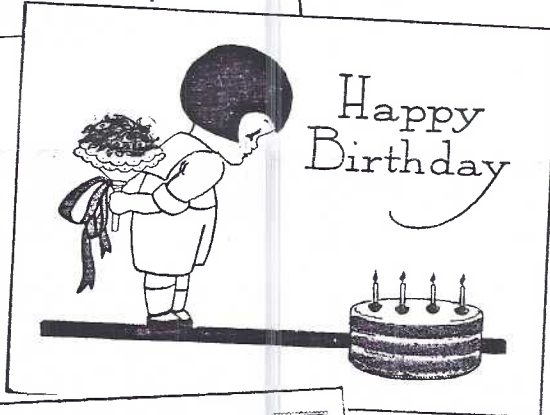
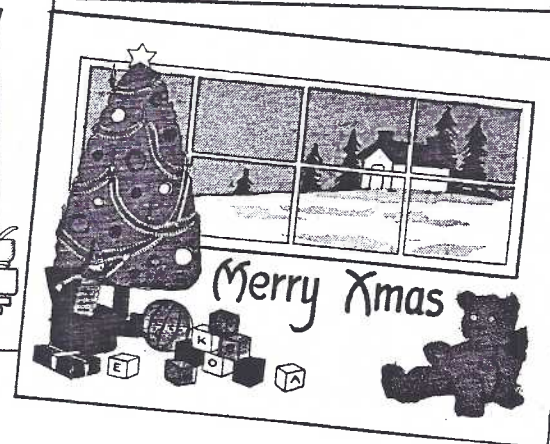
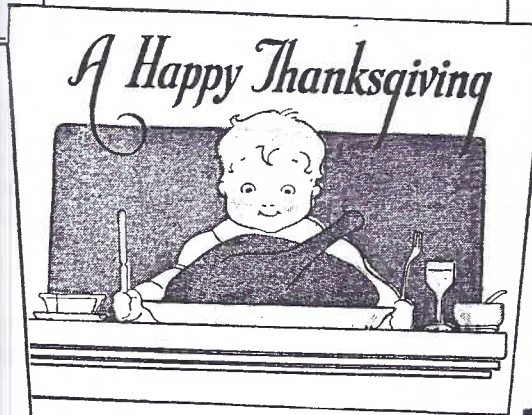
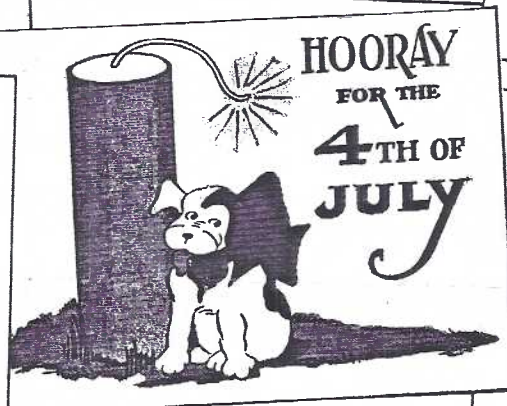
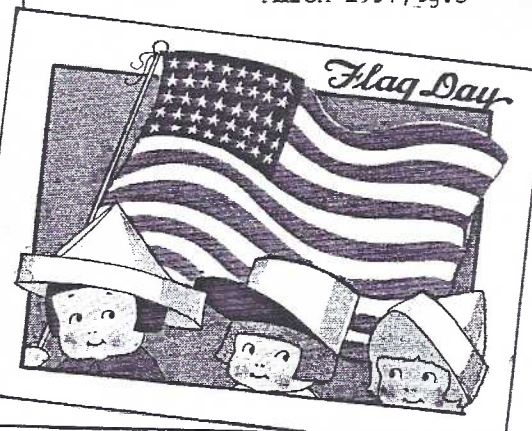
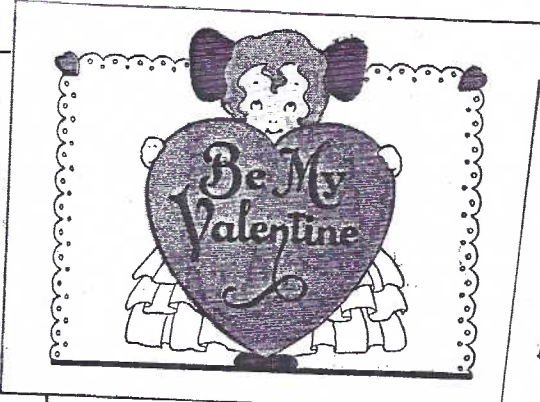
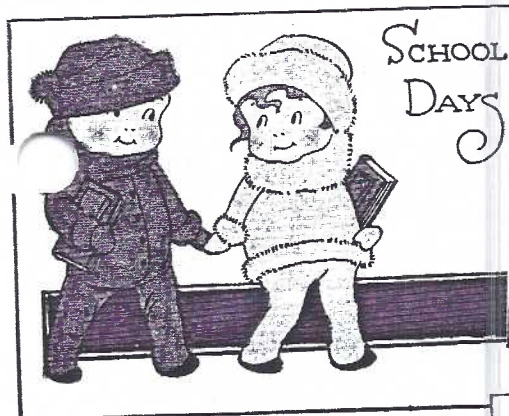
N. Y.

Surprise Telescope.



We show here the latest high class novelty. It is a small telescope nicely finished, about 4 inches long. You let anyone look into it and they will see, greatly magnified, a picture showing a beautiful actress on the stage with a transparent green curtain back of her. Everyone will want to look, especially the Bald Headed Men. There is a push button on the side of the telescope, you tell them to push the button and they will see a different picture, and so he does, but when he pushes the button, the inside of the telescope flies out about 15 inches with a terrible rattling noise and scares the wits out of him. The color of the picture changes when the button is pressed. The show can be set again for another victim in about a minute's time. Sample by mail prepaid, only 25 cents

We show several cuts taken from fliers John received after his initial purchase of 100 POST CARDS for 25¢. Harold has found no indication that his dad ever joined THE ACME POST CARD CLUB OF THE WORLD. Notice trial membership was 10¢ a month or one year for 50¢. THE ACME was a monthly publication. No doubt it was loaded with the company's latest products.



UNUSUAL SHEET OF TOYMAILING CARDS Great Purchase at Morrison's Stand

It was a typical day at member Jim Morrison's PC and Christmas Stand at Renninger's Antique Market. Jim was conversing with Golden Glow friends while efficient helper member Mike Middleton handled the cash sales. I found a few goodies in the Trade Card albums and a final Misc. Paper album produced a charming sheet of ten miniature cards.

True, they were Toymailing Cards, but the charm was the way they covered the calendar of holidays. Maybe Hulco Toys of NY thought of New Year as an adult holiday and so rounded out their set with VACATION DAYS, SCHOOL DAYS and a HAPPY BIRTHDAY.

I could barely wait to get home and carefully separate them with my super-sharp PC trimming scissors.

The complete set with a reverse is shown. I've included a sketch of the original lay-out for posterity. Too bad the multi-color doesn't show here. JW.

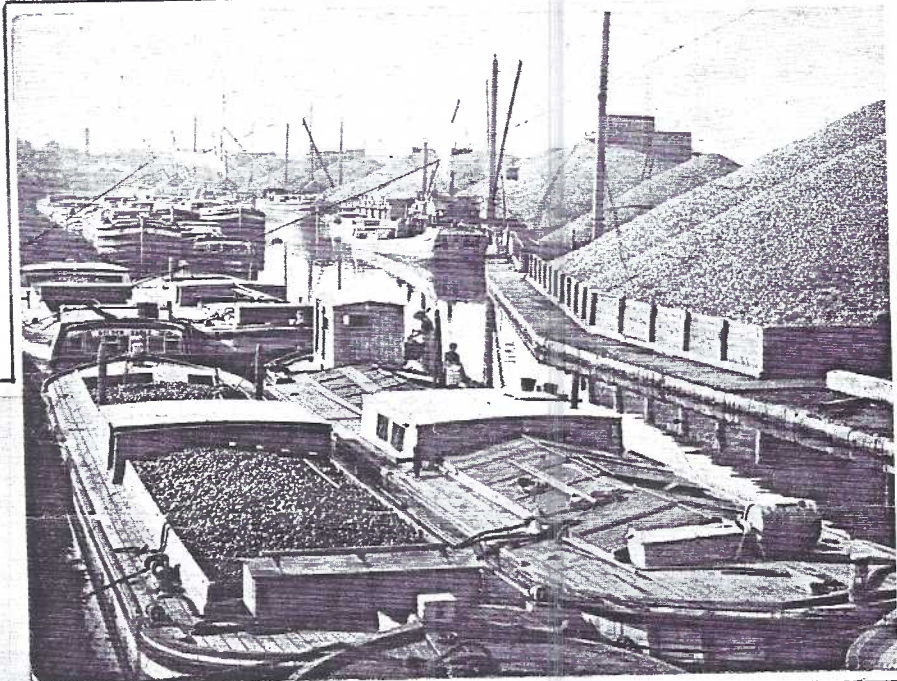
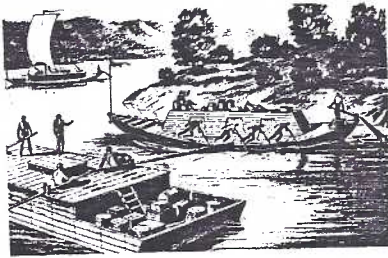
Original sheet was
10 1/8"H x 5 1/1"W

TOYMAILING CARD
CORRESPONDENCE

© HULLCO TOYS N.Y.

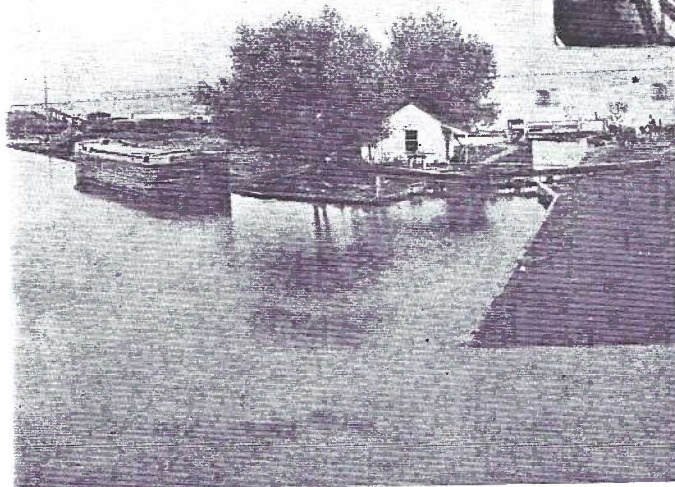
MX	HG
HE	4TH
AHT	HB
BmV	FD
VD	SD

UNIQUE LANCASTER COUNTY VIEWS Columbia Publisher Deserves a Big THANK YOU!



Old Canal Basin,
Columbia, Pa.

Pub. by
Zeamer The Druggist
Hand Colored



Pub. by Zeamer The Druggist
CANAL LOCK, COLUMBIA, PA.

Hand Colored

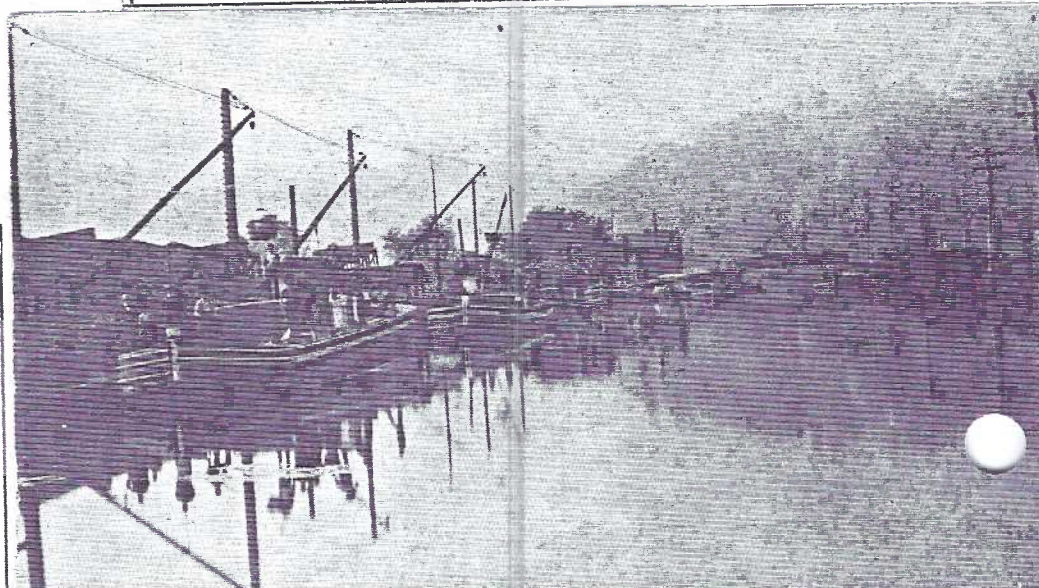
For some communities-views of a canal are commonplace - not so in our Lancaster County. For these unique views we can thank either the thoughtfulness of drug store proprietor Harry W. Zeamer or a photographer he employed from the Anglo-American PC Company.

His drug store at 240 Locust Street was a primary outlet of local postcard scenes for several generations.

Located at the hub, a major and basically the only commercial street in Columbia, he used half of his set printed by Albortype to chronicle the borough's downtown district.

12 Anglo-American Postcards printed for Zeamer Drug Store, Columbia, PA.

- V Building P.R.R. Round House
- H Canal Basin
- V Canal Lock
- V Chickies Rock
- V Coal Chutes
- H Coal Wharf
- V Front & Walnut Sts.
- V Odd Fellow's Hall
- H Old Canal Basin.
- V Old Town Hall
- H P.R.R. Yard
- H R.R. Tunnel above Columbia

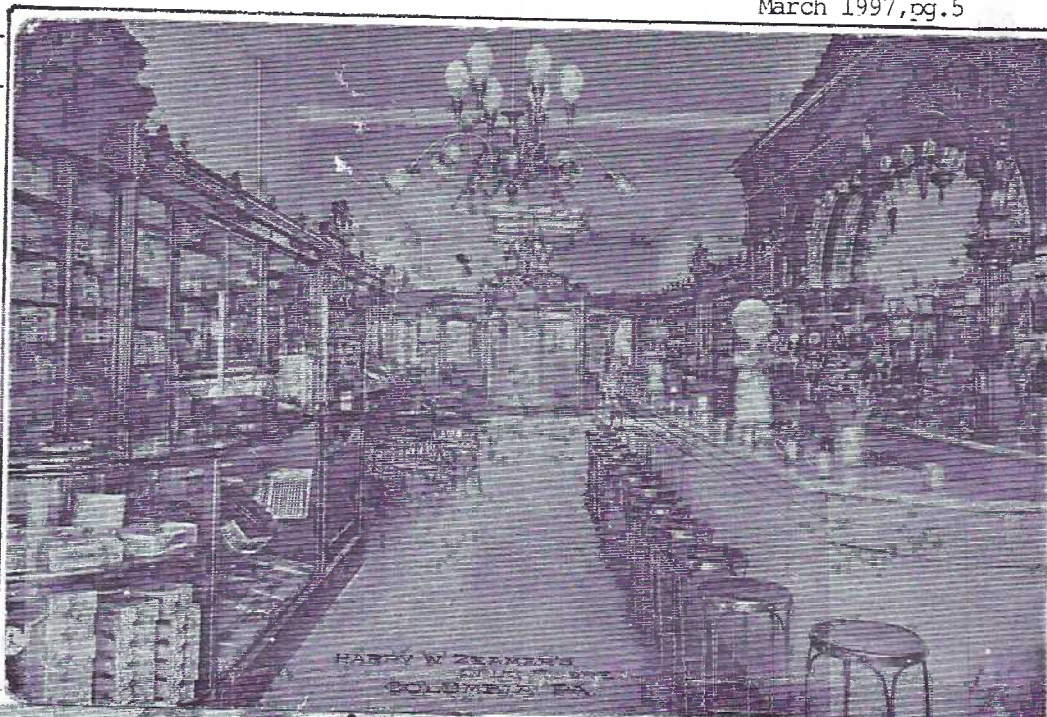


Pub by Zeamer The Druggist

Canal Basin, Columbia, Pa.

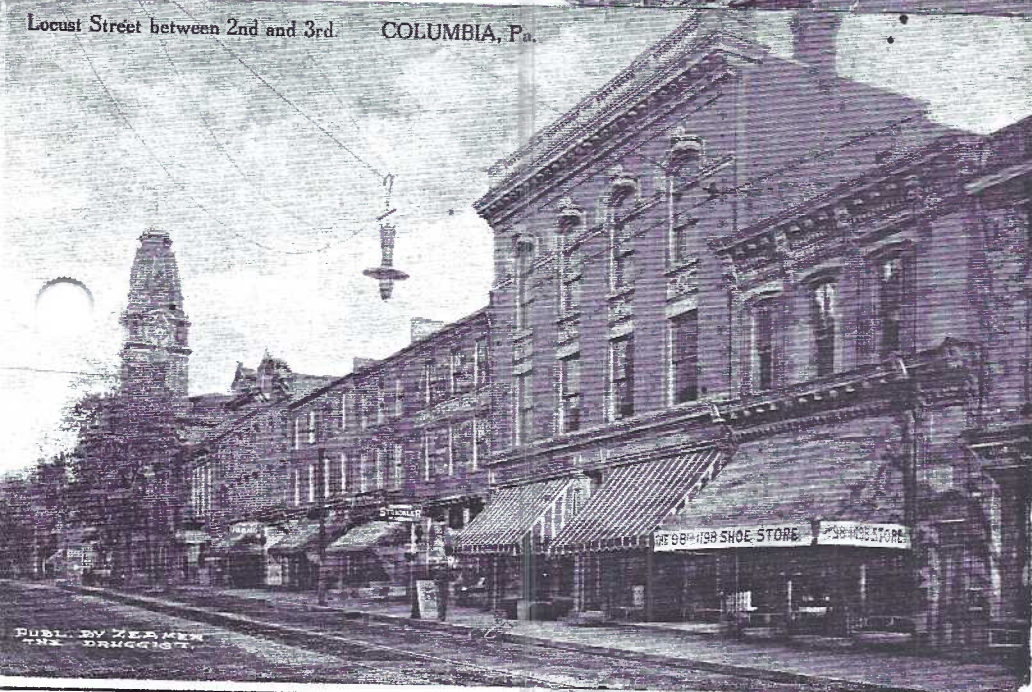
Hand Colored

In these three Albertype postcards published by Zeamer the Druggist we see, top, the interior of his drug store where cigars dominate the left-hand cases. An elaborate pre-WWI soda fountain occupies the right.



Center. On the south side of the 200-block of Locust St. can be seen The 98¢ and \$1.98 Shoe Store. Desher Bros. Mens' Furnishings and the Zeamer Drug Store occupy the 3-story bldg. then C.R. Strickler's Hdwe. and Bernard's Millinery. The tower of the Opera House at Locust and Third Sts. can be seen over trees in the distance.

Locust Street between 2nd and 3rd. COLUMBIA, Pa.

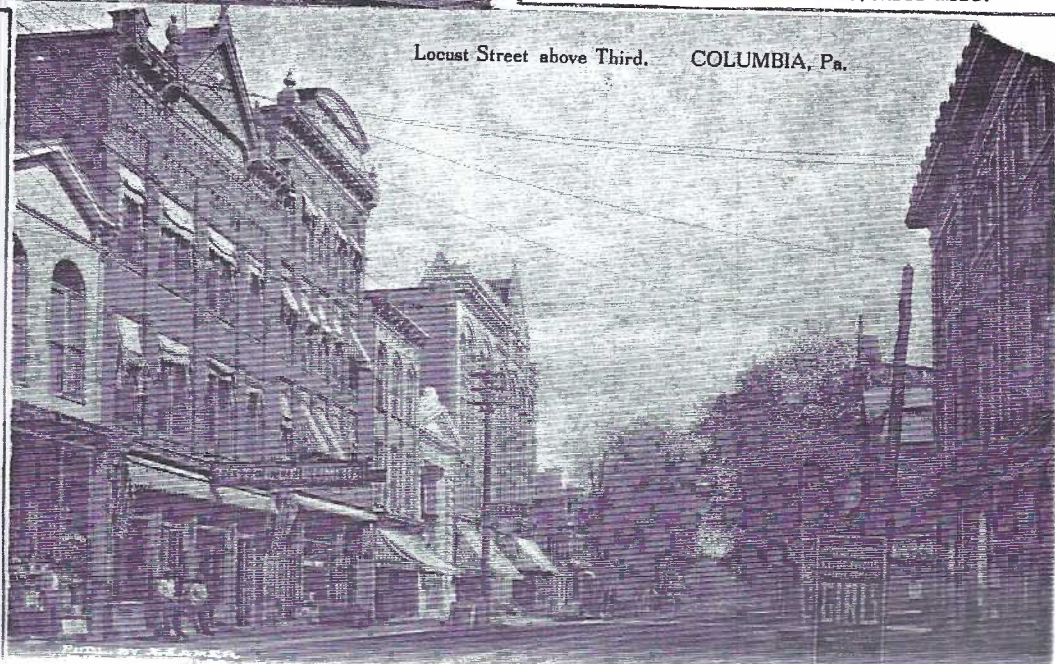


21* Albertype Postcards printed for Zeamer Drug Store, Columbia, PA.

- H Ashley & Bailey's Silk Mills
- V Columbia Opera House
- H Fourth and Locust Streets
- H Harry W. Zeamer's Drug Store
- H Keeley Stove Co.'s Plant
- H Locust Street above Third
- V Locust Street at Mt. Bethel Cemetery
- H Locust Street below Second
- H Locust Street between 2nd and 3rd
- H Locust Street Park
- H Mt. Bethel (oldest House in Columbia, Pa.)
- H North Front Street
- H Penna. R.R. and Susquehanna River above C.
- H Second and Locust Streets
- H Sixth and Locust Streets
- H State Armory
- H Susquehanna River Bridge
- H Third and Locust Streets
- V U.S. Post Office
- H View from Grubb's Hill
- H Locust Street below Third

*once again we discover a set with an odd number of cards. As Charlie Griffiths would say, "Where are the rest? Is there one more, three more?"

Locust Street above Third. COLUMBIA, Pa.



Bottom. In the 300-block of Locust St. to the north these businesses can be identified:

Chas. Rineer's Pool Hall, Hotel Columbia, Central Hotel (the 4-story bldg.), and beyond Beittel's Dept. Store and Woolworth's 5¢ and 10¢ Store. On the south side a billboard reads "The Greatest Comedy Success of the Season Clyde Fitch's GIRLS as Played at Daly's Theater New York for One Whole Year". It stands outside The Happy Hour Theater at 338-340 Locust St. Signs beyond identify J.K. Flury Co., Harnesses & Trunks and The Daily Newspaper bldg.

Other views in this unnumbered Albertype series show as much detail, several with merchants' wagons at curbside. It's little wonder these sepia views and the hand-colored Anglo-American views of Columbia are so highly prized. THANKS TO MR. ZEAMER!

MORLATTON POST CARD CLUB INC.

Presents an Easter Weekend Postcard Show



Farm and Home Center
1383 Arcadia Road
Lancaster, PA 17603
(off Manheim Pike Rte. 72)

Note: Hours

Friday, March 28, 1997 2 P.M. to 8 P.M.
Saturday, March 29, 1997 10 A.M. to 5 P.M.

For more information call
M. W. Hall, (803) 871-9891
Kay Feight, (717) 263-1638
Anne Darrah, (610) 385-3408

Admission \$1.50
(25¢ off with ad)



AND HE SAID HE WAS NERVOUS!

Well, he certainly gave an excellent presentation we'll long remember. Bernie Heisey's program of LINCOLN HIGHWAY slides as well as 1,000's of LH postcards in his albums were heartily received by the record-breaking crowd. We reminded you this would be a good program. IT WAS TERRIFIC!

On tap: MARCH - Auction (see complete list pg.7)
APRIL - "Free For All". Bring your postcards and related paper goods, take all the space you need at no charge!

MAY - Panel discussion. Subject to be announced.

JUNE - Sunday, June 22 Picnic meeting plus showing and selling cards all afternoon. Details later.

FUTURE SHOWS



Local postcard shows begin their 1997 season with
TOWSON, MD. March 8 Maryland Postcard Society show in Days Inn, I-695, exit 29, Loch Raven Blvd. 10-5. No adm.
LANCASTER, PA. March 28-29 Morlatton's Spring Show in the refurbished Farm & Home Center Convention Room (new lights, new walls, new floor) off Manheim Pike, Rt. 72, between Conestoga Marine and Jones Pontiac.
Note new hours: Fri. 2-8 pm and Sat. 10-5. Adm. \$1.50.

HAVRE DE GRACE April 4-5 Chesapeake Spring Fair. Policemen's Community Ctr., 10-6, 10-4. Adm. \$3.00

Of course I would NEVER CUT APART AN ENTIRE SHEET of postcards and so the story of the Hallco Miniatures was true EXCEPT for the scissors bit. (You can do all sorts of magic with a copy machine!) The last time I pulled a pre-mature April Fool joke on Jim M. was March 1993. Time again, Jim!
The uncut sheet is still 10 1/8" x 5 5/8".

THE CARD RANKS FOURTH WORLD-WIDE

First Time Presentation of Prestigious Award

From the January issue of PPM (Picture Postcard Monthly)*, an excellent publication from Nottingham, England, I'd like to quote the following:

"Our special new competition to decide the best current Postcard Club magazine or newsletter brought out 13 entries, including three from overseas. Our judges, four experts from Adlard Print, who turn out PPM each month, rated each entry for Presentation and Content, and the marking produced an exciting finish, with York (England) Postcard Club's A5 size mag just pipping the Isle of Wight's entry by one point!

The newsletter from the Railway Postcard Collectors Circle came third, with 'The Card' from Lancaster County Postcard Club in Pennsylvania fourth, and best of the overseas mags...keep up the good work, editors!"

I thank PPM and its publishers Brian and Mary Lund, known through their advertisements as Reflections of a Bygone Age, for this recognition and note that LCPC received the award only with the help of my staff: Gerald Hostetter, Dot Fry and Jean Frank and all other members who contribute to THE CARD.

*I've subscribed to PPM for several years and, although much of the content is England-oriented, do very much recommend it as THE BEST postcard magazine I've read thus far. Info on subscription on request.
Thanks, again, to the staff. Jim Ward, ed.

THE CARD

STAFF: Dot Fry, Gerald Hostetter, Jim Rudisill, Jean Frank
EDITOR: Jim Ward ADDRESS CHANGES: Gwyn Fulmer
CIRCULATION: Harold Fry. CORRESPONDENCE: See masthead.

LANCASTER COUNTY POSTCARD CLUB AUCTION #24

Follows the business meeting. All items are postcards unless noted.
 EXAMINE LOTS CAREFULLY. DESCRIPTIONS ARE EACH MEMBER'S.
 Auction Chairman reserves the right to combine lots in the future.
 u=used, un=unused, RP=real photo, l=linen, c=chrome, cc=continental chrome
 NOTE: Sellers are asked to wait until end of auction for payment...give
 committee a chance to participate in bidding, too. WE'RE ALL VOLUNTEERS!

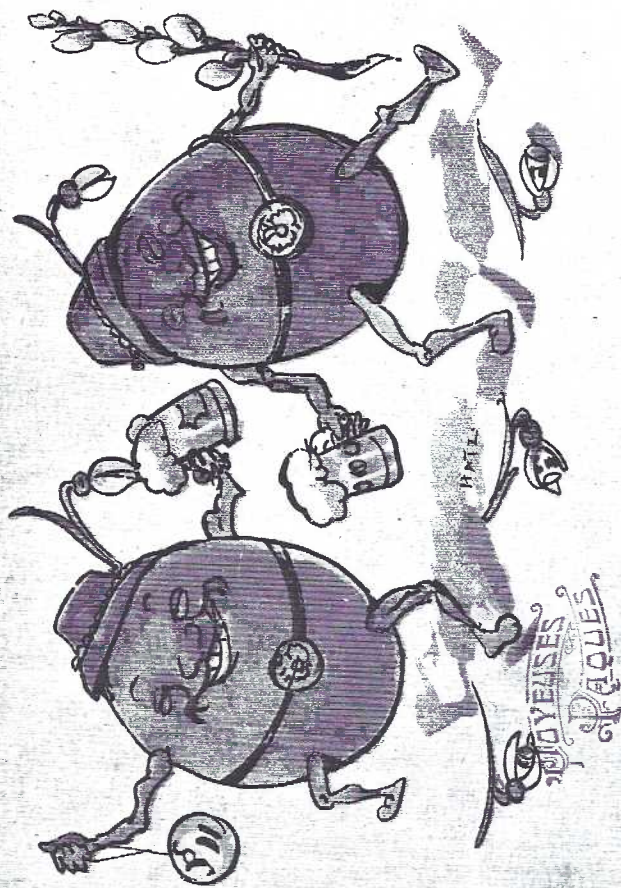
- 1 5 Diff. hotels c,un
- 2 Local ad:The People's Place Gallery cc,u
- 3 4 Best Western Pkwy.Center Inn,dups,cc,u
- 4 2 Pigs 5x7" un
- 5 3 Germany, 1 Kenya, 1 Japan cc,u
- 6 12 Diff. state views,mostly c,un
- 7 8 Diff.Wolverine PC Club (5 NPW) un
- 8 8 Coral Lee PCs:Debbie Reynolds,Willie Nelson,etc
- 9 48 Diff. motels c,mostly un
- 10 16 Diff. embossed u/un
- 11 30 Diff. PA.Turnpike 1 & c, u/un
- 12 Set of 18 OKPEX '76 Bicentennial c,un
- 13 96 AAA,Howard Johnson,Holiday Inn c,un
- 14 20 Diff. Embossed Holidays u/un
- 15 Small Album with 10 real photo PCs u/un
- 16 Album:more than 25 military, mostly WWI u/un
- 17 15 Misc. paper items
- 18 23 Niagara Falls, cc
- 19 14 Sheep,Indians, cc
- 20 13 Foreign, cc
- 21 1 St.John's Lutheran Church,Columbia
- 22 2 Marietta
- 23 15 Churches
- 24 5 11th Ann."Fly Taos" Mt.Balloon Rally FDC's,dups
- 25 3 Japanese layered balsa wood PCs
- 26 14 Over-sized (long) PCs
- 27 Lanc:Placing new dome on old city municipal bldg.
- 28 Lanc:Raub Supply general offices w/adv un
- 29 Hershey:Church Day,4/17/1914 (boating view)
- 30 Lititz:"Famous Lititz Bretzels",pm 9/16/09
- 31 Lititz: 3 trade cards- Stoner,Witters,Zook
- 32 Lititz: 3 trade cards-Inland Chem.+ 2 diff.Brobst
- 33 4 Rockford - drawings by Florence Starr Taylor
- 34 4 Lanc:Garvin Dept. Store adv.PCs views u/un
- 35 4 Lanc:Barry & Zecher adv. PCs views u/un
- 36 4 same,but different views u/un
- 37 Steel PC file w/over 500 acetate sleeves, u
- 38 15 Trains,Depots,Trolleys,incl. exaggeration
- 39 3 RP Florida churches un
- 40 35 Misc.states u/un
- 41 7 Patriotic,Wash.,Kennedy u/un
- 42 10 Animals:dogs,cats,pig,T.B. u/un
- 43 16 Easter,birthday u/un
- 44 12 Thanksgiving,Christmas u/un
- 45 14 Flowers u/un
- 46 11 Ullman,Winsch,Santa,ship,etc. u/un
- 47 35 PA.,Lanc.,Mt.Gretna,Carlisle,Middletown,etc.
- 48 60 Asstd. religious u/un
- 49 36 Masonic Homes,Elizabethtown un
- 50 4 Signed artist: Ellen Clapsaddle
- 51 1 Mechanical: woman hitting man
- 52 5 (set) Young Courtship
- 53 8 RP women
- 54 4 Babies, l=1912
- 55 4 Lanc: J.B.Landis/Landis Art Press
- 56 4 Lancaster City
- 57 1 RP Union Grove PA. pm 1912
- 58 16 Pennsylvania
- 59 15 New Jersey
- 60 40 Virginia,many Williamsburg
- 61 43 Florida
- 62 11 Hedgehogs
- 63 15 California
- 64 11 Massachusetts
- 65 12 Georgia
- 66 1 Miniature cedar booklet: Gettysburg
- 67 8 Lanc:city,county u/un
- 68 8 Lanc: un
- 69 4 Lanc: un
- 70 4 Lanc: un
- 71 4 Lanc: un
- 72 4 Lanc: u
- 73 4 Lanc: un
- 74 8 Lanc: un
- 75 4 Hotels un
- 76 4 Beautiful women,artist signed u
- 77 12 b/w RP Alps, cc
- 78 1 Embossed BPOE (Elks) by Tammen publ.
- 79 4 Philipsburg,PA. 1
- 80 14 Johnstown,PA.
- 81 10 Joan of ARC,Museum series cc
- 82 6 b/w "photo gloss" early Franklin Institute
- 83 21 Animals cc,u/un + folder
- 84 60+ Motels/inns cc,u/un
- 85 60+ Foreign, white border/cc
- 86 70+ Greetings,various eras
- 87 19 Main street views, l/c
- 88 51 Hotels, w.b/cc,u/un
- 89 38 Flowers(Many state flowers) l/c,u/un
- 90 25 Advertisements,few non-PCs
- 91 56 Pennsylvania,all eras
- 92 12 Planes,balloons,automobiles
- 93 19 Presidents/Political + folder(few non-PCs)
- 94 43 Canada by Photogelatin Engraving,mostly un
- 95 26 Court-size:Yellowstone Lodge,etc.,non-PC rev.
- 96 27 Washington DC,wb by Reynolds,mostly un
- 97 Shoebox: various eras, u/un
- 98 Adv:Sharples Separator,West Chester un
- 99 Same but different view un
- 100 H-T-L die-cut Christmas snow scene un

NOTE: Please pick up Auction Forms and keep them on hand. A volunteer committee isn't obligated to fill out your form.

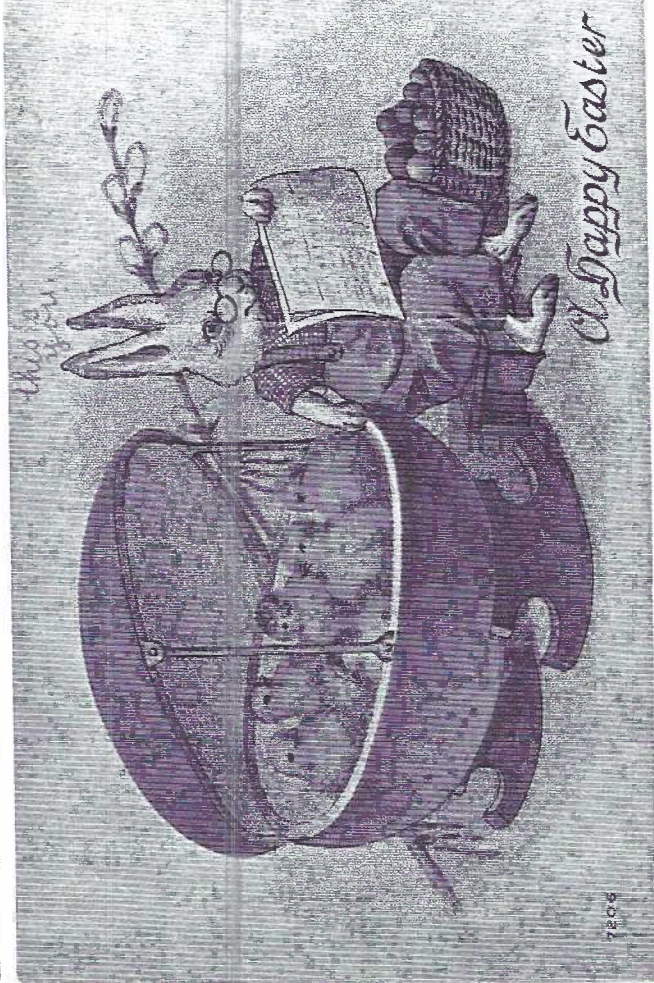
Don't forget April's Program will be a
 FREE FOR ALL!

Bring your extra postcards, trade cards, blotters or
 "what-have-you" in paper, especially LOCAL ITEMS. If
 you don't know how to price them - maybe you'll get
 an offer you'll like!

FANTASY EASTER EGGS contd.



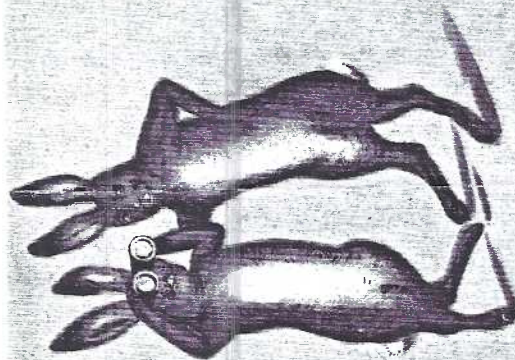
Two French eggs celebrate a Joyous Easter on card #4625-1 by BK of Vienna, Austria. It was mailed to Courcelles, Norway from Roux, Belgium, April 11, 1914.



Ingenious Papa Rabbit has devised just the right cradle for the Easter peeps. American News PC #7206. Ralph Casner of Detroit, MI received the final Easter



You know about the goose that layed the golden eggs but here's a hen that's laying eggs filled with gold coins. Hen and her amazed owner are by popular Swedish artist, Jenny Nyström. Mailed Apr. 15, 1911.



EASTER GREETINGS

Mary E. Casner

card with rabbits 'scooping' multi-egged Ms. Hiker. Advice and admonitions from Mama, "don't work too long, get something from the doctor, now write soon.."