

The Card

MONTHLY PUBLICATION OF
LANCASTER COUNTY POSTCARD CLUB
LANCASTER, PENNSYLVANIA

MEETINGS: 3rd MONDAY
FAITH UNITED
CHURCH OF CHRIST
1204 WABANK STREET
LANCASTER, PA



Dec. 1996 - Vol.7, No.12
Covered Dish Dinner-6pm
Then Exhibits, Presentations and short Program

Yearly membership is \$8 (\$2 extra for ea. member same address) payable to LCPC c/o Dorothy Fry, 1050 Kleinfeltersville Rd., Stevens, PA. 17578. Ads: \$15 full page, \$8 1/2 page, \$5 1/4 page, PREPAID WITH AD COPY. Classified ads FREE. Send ads, articles and correspondence to: Jim Ward, 1795 Kleinfeltersville Rd., Stevens, PA., 17578.



EXHIBIT WINNERS



Secretary Dot Fry wore several hats as she also served in place of an absent Pres. and V-P. Fantasy cards covering the fascinating spectrum were viewed by the 42 members and 1 guest present.

DON DAVIS	FIRST	Metamorphic Uncle Sam
VALERIE REFI	SECOND	Dressed Turkey Gobbler
JERE GREIDER	THIRD	Girls Inside Bubbles

HONORABLE MENTIONS

EARL CARVER	Attack of the Praying Hands
DORATHY FRY	The Poop-Poop Auto (Wind in/Willow)
HAROLD FRY	Toad at the Table (Wind in/Willow)
MICHAEL MIDDLETON	Parading Christmas Gnomes
JIM WARD	Bees Distressed at Rising Price of Honey
JIM WARD	Gnome Plays Uke for Dancing Insects

December's theme is HOLIDAYS (any Holiday will do!)
We will return to using exhibit boards for December.

NOMINEES FOR 1997 OFFICES

With no nominating committee, Acting President Dorothy* Fry was able to come up with the following tentative slate of officers before November's meeting concluded. (They will be voted into office at the December meeting.)

President Ruth Frankhouser
Secretary Jeannine Spece
Treasurer Barabra* Mowrer

Directors for 1996-97

Harold Moyer, Ruth Moyer and Walter Mowrer

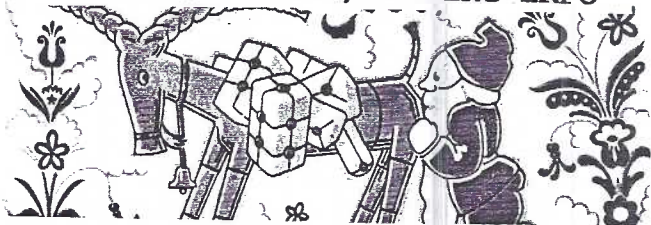
Directors for 1997-98

Mary Darrenkamp, Brian Frankhouser and Ruth Yohe

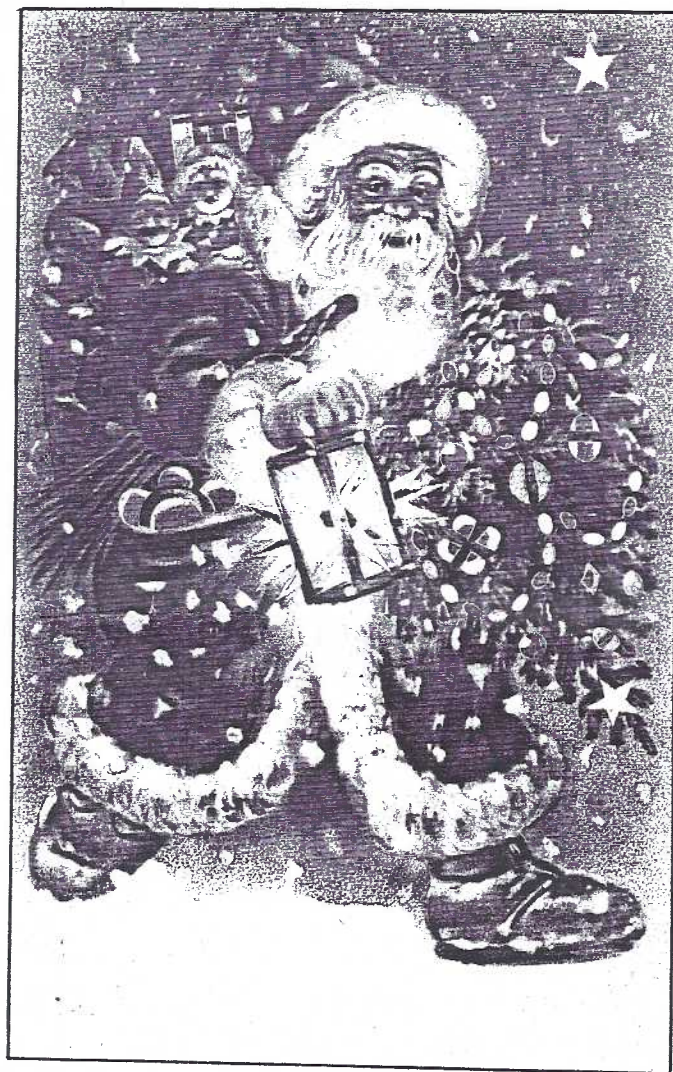
LCPC still needs a Vice President who will serve as President in 1998. Jim Ward has offered to be VP in 1998 and President again in 1999.

*for the record, this is the correct spelling for the names of these ladies.

CHRISTMAS PARTY/MEETING INFO



Bring a hot or cold dinner (kitchen is open at 5 for warming dishes). LCPC will supply the barbeque as well as plates, utensils and beverages. We eat promptly at 6 pm followed by a brief award ceremony concluding with a 20-25 minute slide program.



Santa Claus barely gives you a glimpse. He's intent on the serious business of his annual delivery. On this colorful PC by Hagelburg of Germany the plain ground beneath his feet is curiously void of any greeting. Instead, it appears in the message section on the reverse -

"Dear Santa Claus comes round again,
With lots of fun, and heaps of toys.

With BEST WISHES FOR A HAPPY CHRISTMAS.

From...." (MARY has signed her name).

It's addressed to Miss Dorothy (sic) E. Lee, Conowingo, MD., RFD #1 and was cancelled at Conowingo, MD on Dec. 21, 1907 at 4 pm. The divided back had only become legal for mailing in the USA the previous March so we know this had to be either 1) a newly issued Santa postcard or 2) a new reverse for an old design.

Santa's robe is a pleasant purple - a hint it was European made (Santa's red-coat is purely American). The Old Elf really has his hands full. He carries a tree, a huge basket of toys, a bag of apples and his switch of branches (for the rare mis-behaved child) as well as a lantern to guide him on foot.

The design, by the way, has 65 holes punched into its top surface. The holes, in turn, have been meticulously layered beneath with red, yellow, green and blue papers so that when held-to-light they provide added charm and a delightful surprise for the lucky receiver. This is one of 38 die-cuts and transparencies Jim Ward will use in his program **Hold to Lights Part Two** at the Christmas Party/Meeting. The cards include most holidays including Hallowe'en as well as views, comics, lovers, legends and mythological characters. (You need not have seen Part One to enjoy this installment.)

DUES



LANCASTER COUNTY LEHN WARE

This full-color photo was published by Jim Hess of Lancaster and printed by Dexter Press as #66467C for the Cloister Country Store in Ephrata, PA. some time in the 1950's.

The chrome card shows a representation of decorated woodenware produced by John Lehn (lane) who lived from 1798 to 1892. On his lathe he turned white pine and mulberry wood into a variety of subjects be-

tween 1860 and 1892. Three-petal flowers, strawberries and pomegranate-like shapes decorated a variety of wooden objects all enhanced with sprays of foliage. Today the best of the articles fetch over \$1,000.

Lehn was originally United Brethren but married a Mennonite girl and probably joined the Mennonites later in life according to the Lancaster Mennonite Historical Society. He is buried at Hammer Creek Mennonite Cemetery in northern Lancaster County, PA.

TOWSON POSTCARD SHOW

★ DECEMBER 14, 1996
SATURDAY, 10 AM - 5 PM
★ ★ DAYS INN

Baltimore Beltway I-695 exit 29, Loch Raven Blvd.
★ ★ BALTIMORE, MD ★ ★

Directions: From I-695 Baltimore Beltway, take exit 29 marked Loch Raven Blvd. Go straight up the hill, past the Days Inn. Make a U-turn near the Ramada and go in Ethan Allen Gallery driveway.

From I-95 take I-695 West towards Towson. From I-70 or I-83 take I-695 East towards Towson and Essex.

DEALERS:

Rev. Bishop - York, PA
Suzanne Klies - Laurel, MD
Greg Bardsher - Silver Spring, MD
Roy Cox - Baltimore, MD
Bill Wolfersberger - Winchester, VA
Don Wachter - Frederick, MD
S. & G. Zussman - Atlantic, NJ
J. Kotek/R. Moulton - B.C. Canada
M. & W. Knoll - Baltimore, MD
Emerald Aisle - Baltimore, MD

For additional information, call

Dee Delcher 410-433-1532

Note: No early admission

* Non-show dealers welcome in restaurant & lobby not in Main Show room.
All shows are sponsored by the Maryland Postcard Society

also -
MAR. 8, 1997
MAY 10, 1997
JULY 19, 1997
SEPT. 20, 1997
DEC. 6, 1997

When Charlie Groff contributed to our STAMP VIEWS article (Oct/Nov. issues) he also sent in this World War II vintage card. It offers a Christmas Greeting as well as a reminder to support the war effort.

John and Florence Bachman, Mount Joy, Penna.



Giving a War Stamp isn't new,
Nor our Christmas Thoughts of you.
New or old our wishes are most sincere--
More Cheer and best of Luck in the New Year!



CLASSIFIED ADS

CLASSIFIED ADS are FREE to any member. Keep to 50 words or less. Copy must be to editor by the 1st of each month to appear the following month.

I will pay a finders fee of \$10 per Public Auction or Sale Bill you find with either of these names: Parke Shaub, Auctioneer; Simon Groff, Auctioneer; Earl Pickell, Clerk. Thank you, Sandra Shaub #49.

Will pay \$4 or more for any ugly Valentine PCs I need having red, blue or yellow borders marked Series 308. Buy other "vinegar Valentines" too. Jim Ward #1.

My POSTCARD SHOP is open Sat. as well as Sun. every week at Barr's Antique World - first bldg. north of the PA Turnpike Reading-Lanc. Exit. John Klein #247.

Single issues earlier than 1993 may be requested but they will be reprints w/poor reproduction of illustrations and cost 10¢ per side (80¢ per 4-pg.issue) with a few early issues of 2 and 3 pgs., some with as many as 10.

The First Five Years, a 32-page history of LCPC with full color covers written and printed by Jim Ward is available for \$5. Among many facets of LCPC activities is an index of feature articles from **THE CARD** from its inception to Dec. 1994.

THE CARD - 1996 Index

Checklist

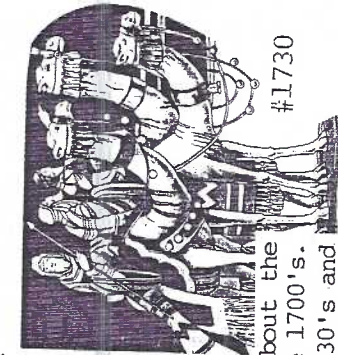
Month	Event	Year	Notes
January	Hour Glasses on New Year PCs		
January	Union Stock Yards, Lancaster		
February	August Hutaf - Leap Year		
February	Stamp Language/Lovers PC		
February	Masonic Home Album - Rau Real Photos	x	
March			
March	Donegal Presbyterian Ch., 175 Years	x	
March	Buffalo Bill		
April	Pennsylvania Railroad Sesquicentennial		
April	Angels		
April	Philatelic Tales on Local Cards		
May			
May	ErKling - Musical Culture		
May	Apostolic Clock - Hershey Museum		
May	Pequea East and Pequea West		
May	PNW Member Cards		
June			
June	Elizabethtown Business PCs	x	
June	Carlson Local Art Postcards	x	
June	Graduation Postcard Set		
June	Winners of Contest #2 "Miniature PCs"		
July			
July	McDonald Sticker PCs		
July	Georgia O'Keeffe Art Postcards		
July	Landisville Camp Meeting	x	
August			
August	CPC Expo Highlights		
August	Lightning Postcards		
August	J.R.Williams Western PCs		
September			
September	Isa Madenspacher Local Art Views	x	
September	Polk Heroes		
September	American Indian Dances.		
October			
October	Post Card Views on Stamps		
October	Generaldry on PCs		
November			
November	Deberth Estate PC Auction		
November	Post Card Views on Stamps continued		
December	Visible Turkey		
December			
December	Franc. County Lehnware		
December	Miniature Greetings		
December	Worn & Hardat Automats		

148 full-size postcards shown and over 60 smaller cards and other illustrations used.

Listing of POSTCARD logos for 114 different printers and publishers from June 1995 to September 1996.

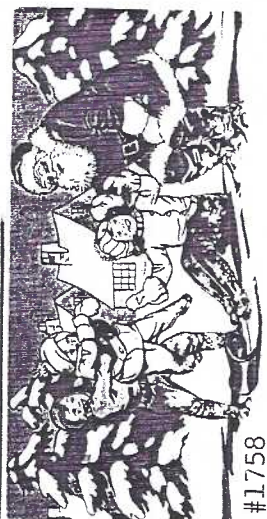
Membership Chairlady **Dorathy Fry** is pleased with the early response of some members in paying 1997 dues. Why not write your check today (before Holiday obligations begin to mount)? Send \$8 per member plus \$2 for each additional member at the same address to **MLPC, c/o Dorathy Fry** 1050 Kleinfeltersville Rd., Stevens, PA. 17578. Thanks.

#1779

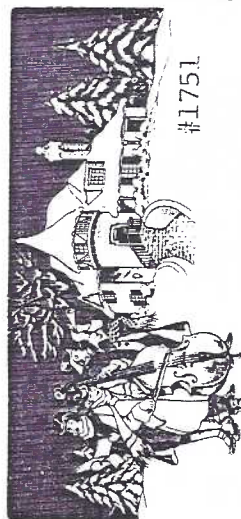


#1730

There's something clean and gorgeous about the Stecher Christmas postcards numbered in the 1700's. These "late" issues are from the '20's and '30's and reflect the designs of those decades. But it's the bright primary colors you must experience yourself. Even a color-blind collector can enjoy them!



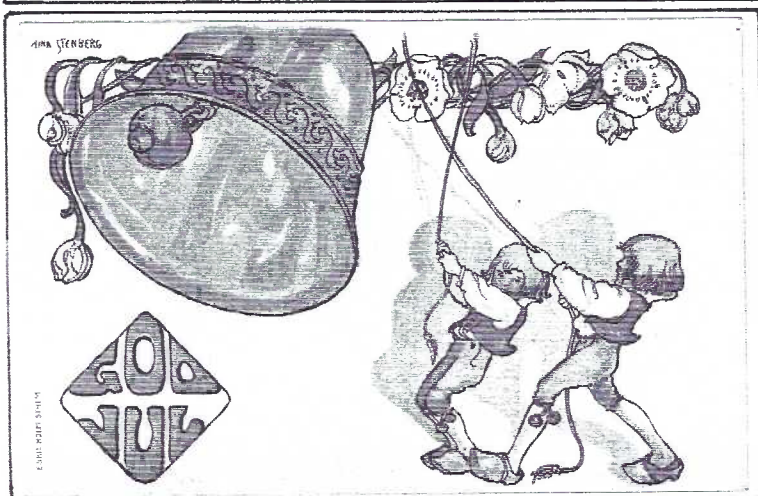
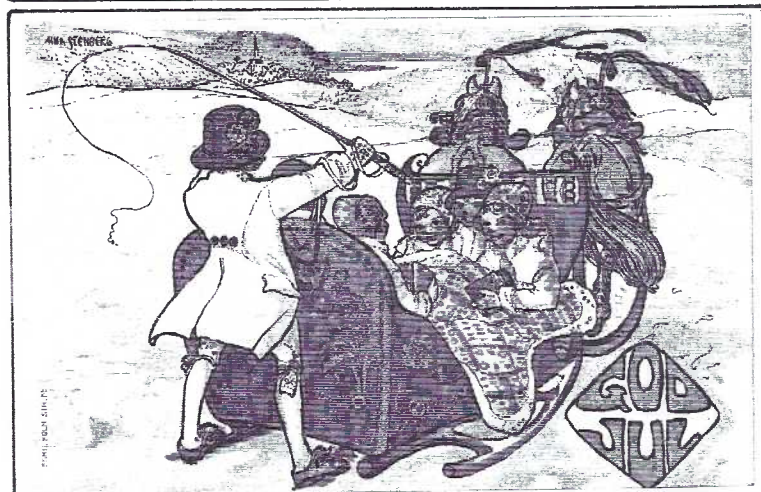
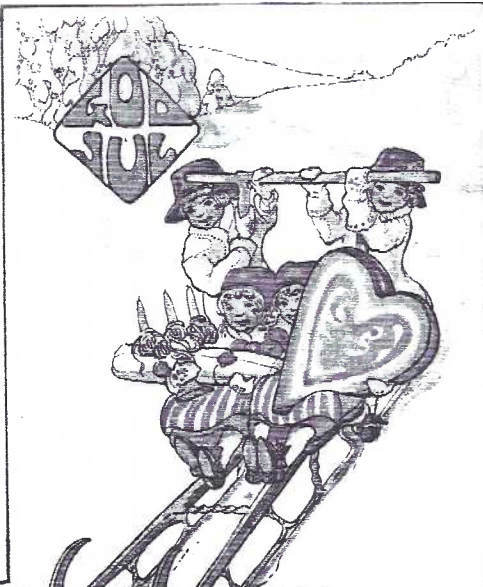
#1758



41751



MINIATYRKORT.



MINIATURE CHRISTMAS GREETINGS

Above is a miniature 1910 issue by the John Winsch PC Co. Penciled on the reverse is "From Papa, Dec. 25, 1913". Popularity of the company's PCs saw designs continue in stores for many years. The remainder of the miniatures on this page are designs by Aina Stenberg. Whereas the Winsch PC has mute tans and greens, the Stenberg cards are pastel yellows, oranges and rusts, a departure from typical American Christmas colors. Stenberg was born in 1885. Her work reflects the beautiful art nouveau influence of her time.





150 POSTCARD COLLECTOR MAGAZINES and more
 Excellent Resource Material = 30¢ ea.
 Vol.I, #1 (Nov.1983) through July 1996 includ=
 ing excellent check-lists and articles by the
 hobby's leading writers, missing only Dec. '83, Feb. '84
 and May '93. PLUS 29 duplicate issues. ALSO 15 Delti-
ology by Jas.Lowe. And the icing on the cake: 15
 issues of the much sought-after American Postcard
Journal by Roy Nuhn, Vol.I, #1 (Sep.1975) to Vol.V, #1
 (Feb.1979). Excellent resource material. All for \$60.
 Will deliver free up to 50 mi. from Lancaster or pay
 half of your shipping charge. Jim Ward, 1795 Kleinfel-
 tersville Rd., Stevens, PA, 17578-9773. PAID AD.

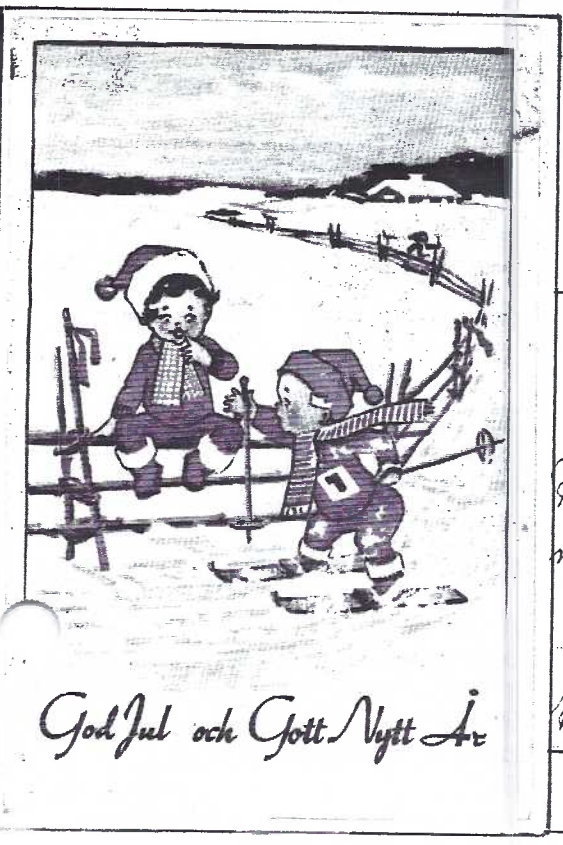


Miniature greeting cards are not uncommon. Finding cancelled ones is a challenge. One of the pair (left) was cancelled in Phila. PA, Dec. 23, 1923. It was mailed to nearby Limerick. An unidentified publisher.

The little skiers (lower left) send greetings for a GOOD CHRISTMAS AND A GOOD NEW YEAR (note large "1"). The Swedish stamp is cancelled 1950 but neither the mailing town nor destination are legible.

The final card is a posed colored photo. The huge "1" again hints at the message, HEARTY NEW YEAR GREETING. The stamp is cancelled Dec. 8, 1912 from Kosta, a village in southern Sweden. Olga, the receiver, lived in Jamestown, New York, North America.

Sweden published the lion's share of tiny holiday and birthday greeting PCs. Why? THEORY: Cold weather natives find speaking with fewer words conserves the breath when outdoors and this conciseness extends to their writing. (Just a theory.)



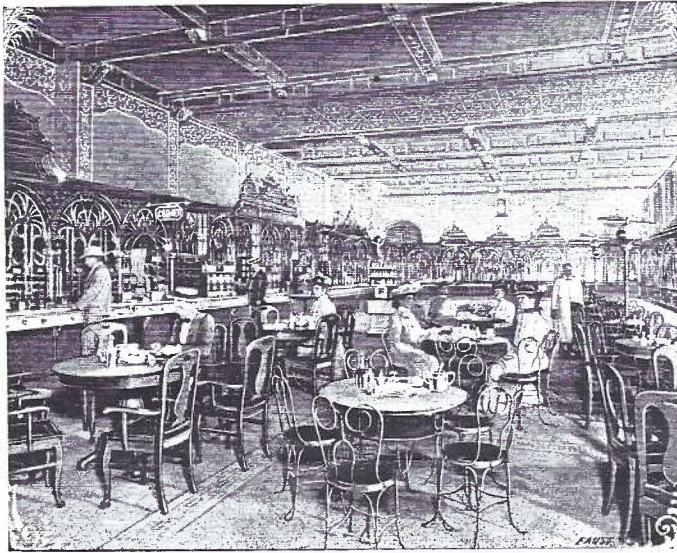
Fam.
 ms. Hansson
 Lida
 Ambjörnary.

DUES

HORN & HARDART AUTOMATS

THE AUTOMAT - INTERIOR VIEW

HORN & HARDART BAKING CO., PHILADELPHIA, PA.



VISIT THE AUTOMAT RESTAURANTS
You see what you want and get it by dropping in your coin
YOU ABSOLUTELY HELP YOURSELF

Largest AUTOMATIC RESTAURANT in the World, 818-820 Chestnut St., Philada., Pa.
AUTOMAT 2ND, Juniper St., below Chestnut St., Philada., Pa.

The ultimate in automation had to be the AUTOMAT - especially in 1906! And folks from Lancaster and York would brag about their trip to Philly -to eat at the AUTOMAT! It's hard to believe in this day of fast-food restaurants with drivethrough windows that anyone would travel 60 miles to put a few nickels in slots for a hot or cold meal.

But they did.

On the undivided back b/w card above (publisher unknown) we see the interior of one of the original three **HORN & HARDART** automatic restuarants (AUTOMATS).

Joseph Horn and Frank Hardart opened the first AUTOMAT in Phila. in 1902. "Waitress-less"restaurant equipment came from Germany.

The original Chestnut Street AUTOMAT closed in 1968 and is now in the National Museum.

Philip Jamison in PHILADELPHIA IN PICTURE POSTCARDS 1900-1930 (it's in our LCPC Library) says "the AUTOMAT concept not only sped up service, but insured that perishable foods were served at safe temperatures dur-

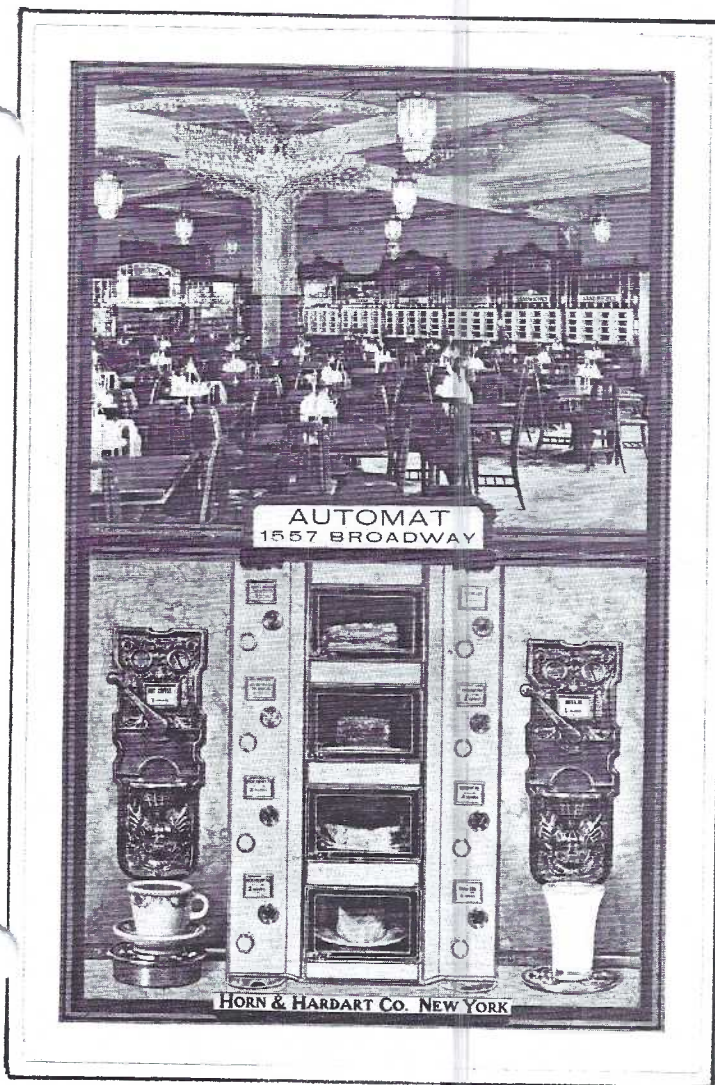
(contd.next pg.)

DUES



Horn & Hardart AUTOMAT — Times Square, New York

This PC, with those on pgs.7 and 8, was published by Lumitone Photo-print, NY. Lumitone is well known for its quality cards of restaurants and hotels. A Horn and Hardart Automat was a "class act" to many people and choosing this publisher helped convey Horn & Hardardt quality. The PC shows how large a H&H property might be and the insert offered a preview for a potential first-time customer. An additional line on this reverse reads "Visit the New York World's Fair - 1939".



ing a period of food contamination scares. Behind a baroque wall of beveled glass, nic-kled brass and marble, sandwiches, beans and rolls and pies awaited a nickel-slot libera-tion."

At their peak 800,000 meals were served a day with "the finest coffee in town".

Some delving into NYC directories might tell us which of these AUTOMATS was built first and thus which Lunitone card was printed first. H&H made it so much easier!

Captions on the reverse read much the same as the Phila./NYC PC on the preceding page with the exception - they tell us how many AUTOMAT-CAFETERIAS are "serving over half a million patrons per day".

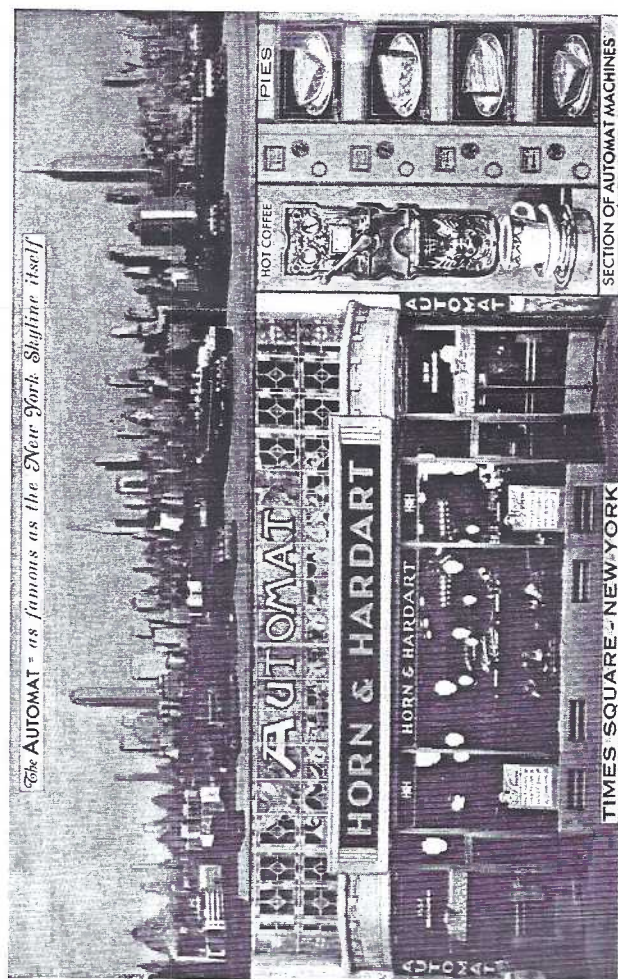
"150" on the Broadway card

"154" on the Times Square card

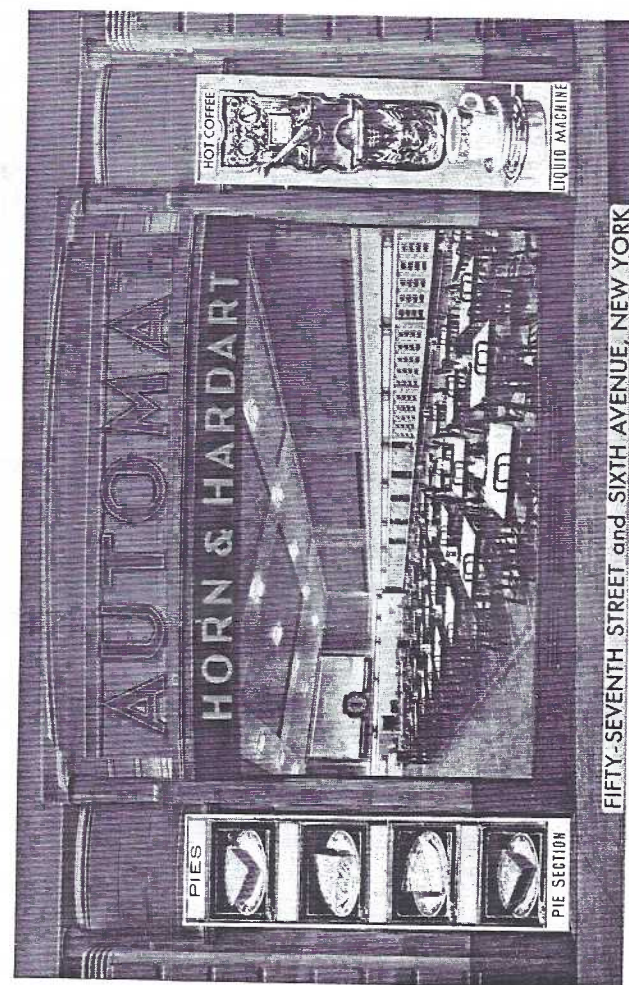
"158" on the 57th St. and 6th Ave. card

If any of our readers have additional H&H cards to add to our list, send us copies.

The Lunitones are not scarce cards and can be found with a little searching for \$5 to \$7 each in unused condition. The unj/back b/w can easily cost twice as much.



The AUTOMAT - as famous as the New York Skyline itself



Eating by machinery—in this machine age.

HOW AN AUTOMAT WORKS

FIRST
DROP YOUR
NICKELS
IN THE SLOT

THEN TURN
THE KNOB
THE
GLASS DOOR
CLICKS OPEN

LIFT
THE DOOR
AND HELP
YOURSELF

HORN & HARDART

But the place is empty. They all have fled! Can you blame them?

*run in our
machines
and enjoy
the life
of the
future?*

I thank God still for the taste

Interior of One of the Fifty Automat-Cafeterias
in Philadelphia and New York

Having just portrayed the enthusiasm with which most people accepted the new concept of the Automat, we offer another viewpoint - one from the writer of the above Horn and Hardart postcard. The card lacks stamp or cancellation but Mr. R. might easily have been from Lancaster County

"This is one of my 50 dining rooms. Can't you hear the birds chirping outside the door? Can't you see the morning glory bravely lifting its blossoms on the other side of the window? Can't you hear the cat purring contentedly on the door step? Can't you (through the maze of glass-ware and onyx equipment) hear the cattle lowing as the sun begins the final stage of its journey to oblivion behind the horizon? Can't you hear the crickets and the katydids noisily hiding in the grass? Can't you hear the old gray mare neighing for her supper as she pokes her nose through the little window above her stall? Can't you hear the pump handle squeak as they draw water from the well? LOOK again, on the other side of the card! It's all there, just as I have told you in your imagination and in mine. Thank God if you can hear and see it all. Herbert Randall."

And around the edge of the pictures he has written: "Eating by machinery—in this machine age. But the place is empty. They all have fled! Can you blame them? Thank God still for the taste of home life Charlie and Jennie, Edna, Grace, Guy and you gave me in June."



**HEARTY GOOD WISHES
FOR THE NEW YEAR**
from all of us
on the staff
of
THE CARD

Please remit your
1997 DUES
(See page 3.)

THE CARD
STAFF: Dot Fry, Gerald Hostetter, Jean Frank,
Jim Rudisill EDITOR: Jim Ward CIRCULATION:
Harold Fry ADDRESS CHANGES: Gwyn Fulmer.
Articles, suggestions, correspondence to: 1795
Kleinfeltersville Rd., Stevens, PA. 175789773