

The Card

MONTHLY PUBLICATION OF
LANCASTER COUNTY POSTCARD CLUB
LANCASTER, PENNSYLVANIA

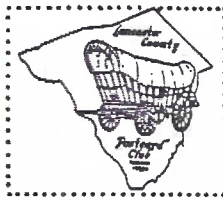
MEETINGS: 3rd MONDAY
FAITH UNITED
CHURCH OF CHRIST
1204 WABANK STREET
LANCASTER, PA

May 1994 - Vol. 5, No.5

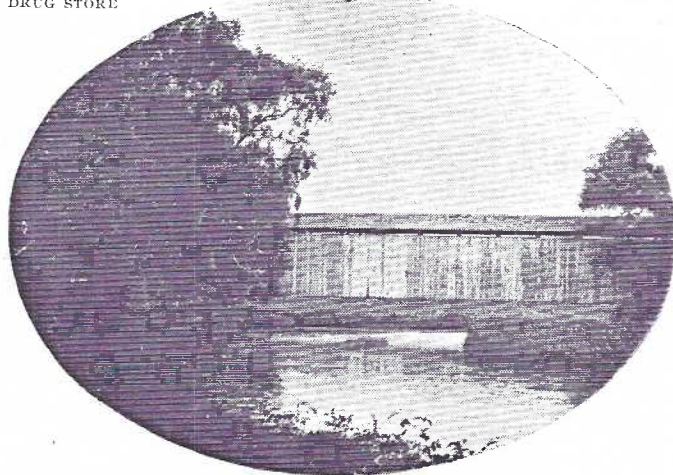
NEXT MEETING

May 16, 1994 7 pm
Buy/Sell/Trade 6 pm

Yearly membership is \$7 (plus \$3 per person, same address). Ads: \$15 full page., \$8-1/2pg., \$5-1/4pg. prepaid. Articles and correspondence: 1795 Kleinfeltersville Rd., Stevens, PA 17578 Dues and General Correspondence to: LCPC c/o Mowrer, 786 Kames Hill Rd., Columbia, PA, 17512



CHANDLER'S
DRUG STORE



Hartman's Bridge, North of Strasburg, Pa.

"Beneath the big, old elm trees,
Where coolest zephyrs play,—
I tell you there's no finer breeze
Than that by old Pequea."

From "Down to Old Pequea" by John L. Shroy.

K105 Hartman's Bridge stood on Rte. #897 n. of Strasburg, PA. It was built in 1841. The PC is by Express Print. for Chandler's Drug Store, Strasburg. John Shroy was a colorful poet-historian from the town.

The "K" number is by THOMAS G. KIPPHORN who, after many years of diligent effort, devised a numbering system to designate all covered bridges built in Lancaster County (from 1800 to 1987) so we can identify those gone before the World Guide Numbering System (see below) became effective c.1960. We are much indebted to him for his work.

Because of their universal appeal, covered bridges appear regularly on new post-cards and offer a great opportunity for beginning collectors. Those who accept the challenge can search for extinct bridges on linens, white borders, "golden age" and real photo cards.

MAY IS COVERED BRIDGE MONTH!

Several Lancaster County Postcard Club members are 'blessed' with the love for another hobby - **Bridging: Martha Holmes**, Editor of Pennsylvania Crossings, an informative quarterly of The Theo. Burr Covered Bridge Society of Pa., Inc., her husband **Russ Holmes**, its Treasurer and **Mary Darrenkamp** one of our faithful charter members. I wish to thank them all as well as **Merv Wenger** for help in this article (to be continued with local bridges in the June CARD).

Covered bridges are found throughout the USA and around the world but we Pennsylvanians feel a particular warmth for these venerable structures. PA. is the birthplace of the American Covered Bridge and it has the most still standing (219)* of which 119 carry motorized vehicular traffic. The majority of the rest are preserved in parks or on private property.

***Russ Holmes #82** reports (4/28/94) the Winter of 1993-94 has reduced the total to 213,

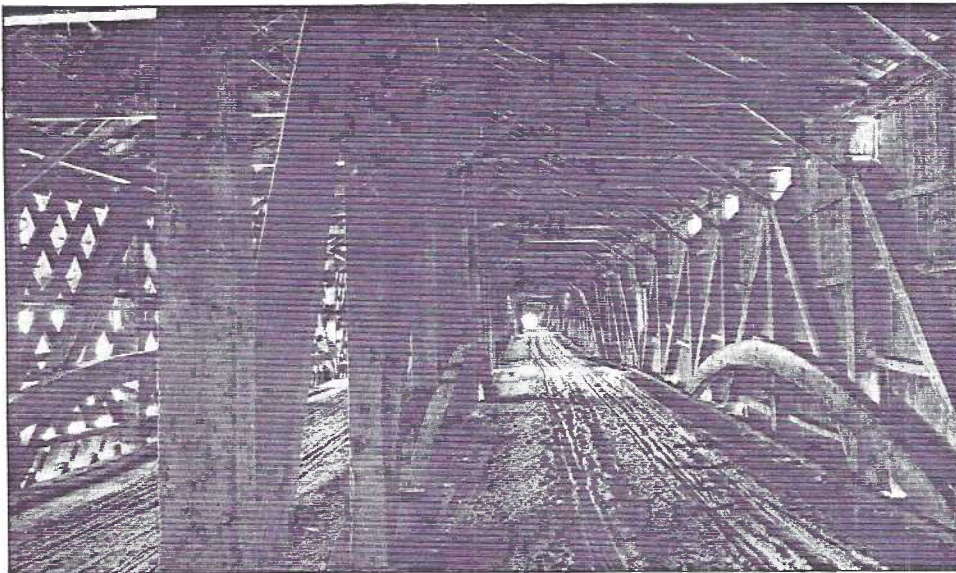
COVERED BRIDGES...WORLD GUIDE NUMBERS

Just like dogs, cats, flowers and insects we know many of the same living things by different names. Depending on where we grew up or who taught us first we might call them lightning bugs or fireflies but **Photinus** would tell anyone in the world what we mean. And the same is true with COVERED BRIDGES. They're known by the family that lived near them or operated a mill next door (this was more often the case than not). Each generation often saw changes in ownership...what confusion!

And so the covered bridge enthusiasts, to simplify their hobby, began a logical system of numbering about 30 years ago. This is a **3-number system** in which the **first number** shows the alphabetical listing of the state (PA. is 38th in the USA); the **second number** lists the county (**Lancaster** is 36th in PA.); while the **third number** identifies the **individual bridge** in the county and was numbered as information was received and does NOT reflect an alphabetical listing. Foreign countries use additional letter abbreviations.

If a bridge spans two counties or two states it has two numbers representing each political entity. Lancaster has two spans crossing into Chester County and is often listed first (alphabetically) under Chester.

*some "bridgers" now substitute the postal service's state abbreviations so #38-36-20 could be referred to as PA-36-20.



*7.8.6.1904
Box 87, Springfield, Mass.*

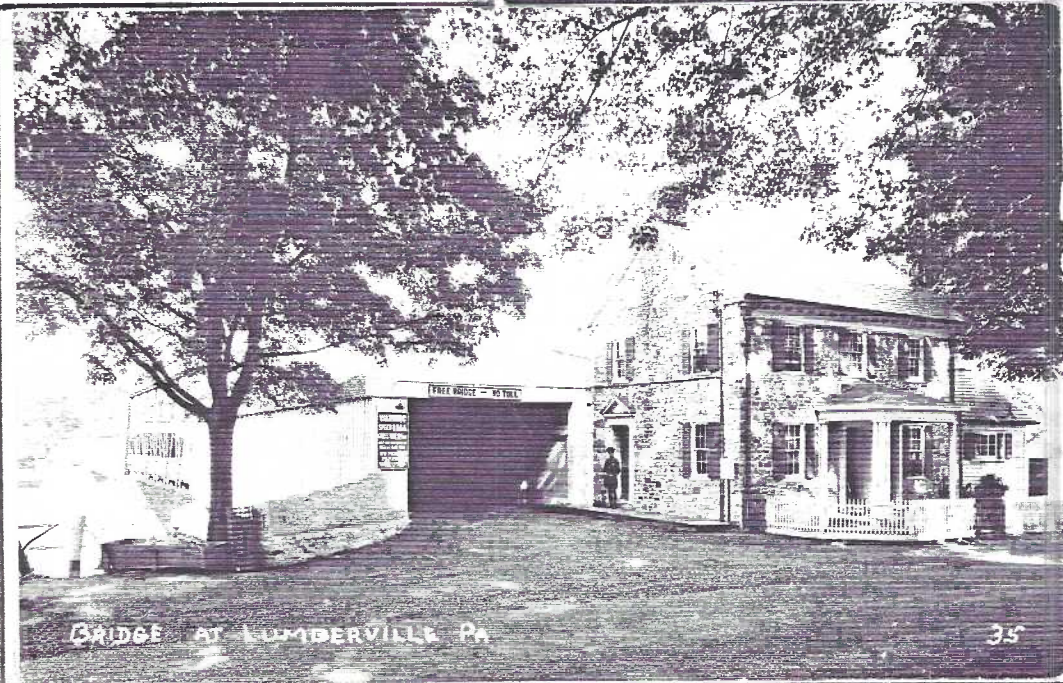
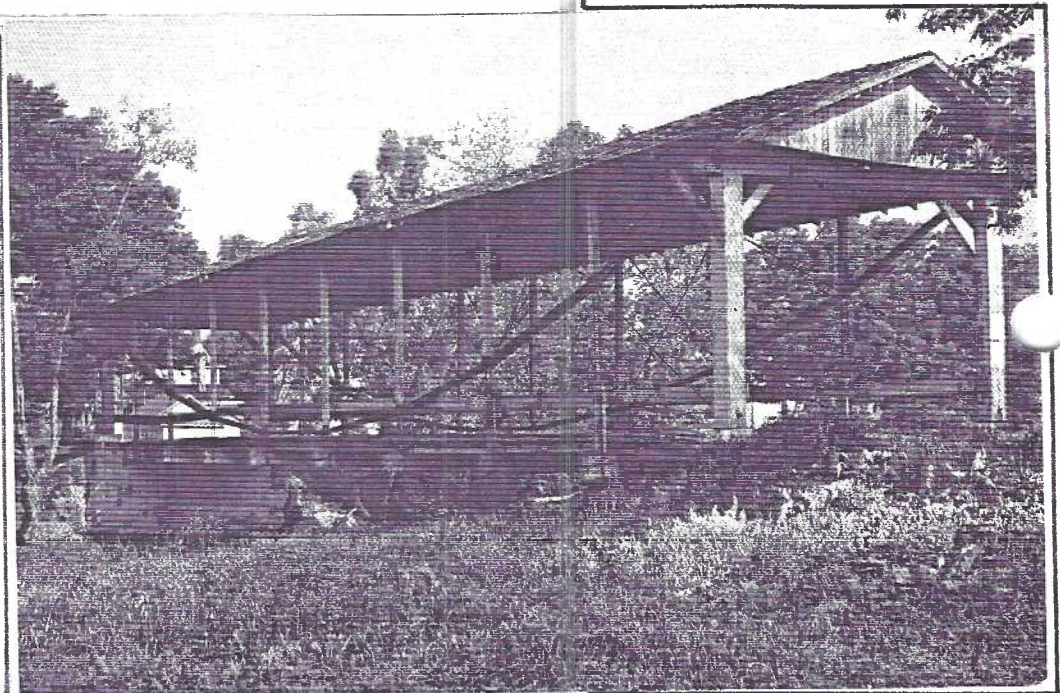
\$25,000 was raised by lottery to build the Springfield Toll Bridge in 1820. In 1878 a sidewalk was added. The bridge was removed in 1922. This great b/w interior view is copyrighted by Ernest W. Browning. Publ. by the Springfield News Co. Springfield, MA. Because of its early demise, it has no World Guide Number. PC was mailed Dec. 31, 1907 by a member of The Post Card Union, Philadelphia, USA.

Copyright, 1904, by Ernest W. Browning.

THE OLD TOLL BRIDGE.

Springfield, Mass.

#35-57-01 crosses Little Twin Creek at Germantown, OH. Built in 1870, the 100' span has a unique INVERTED BOW-STRING SUSPENSION. It never had any siding. In 1964 it was completely restored through individuals and various covered bridge societies. Koppel printed this #65351 colored chrome for Hivnor Card Co., Vanesville, OH.

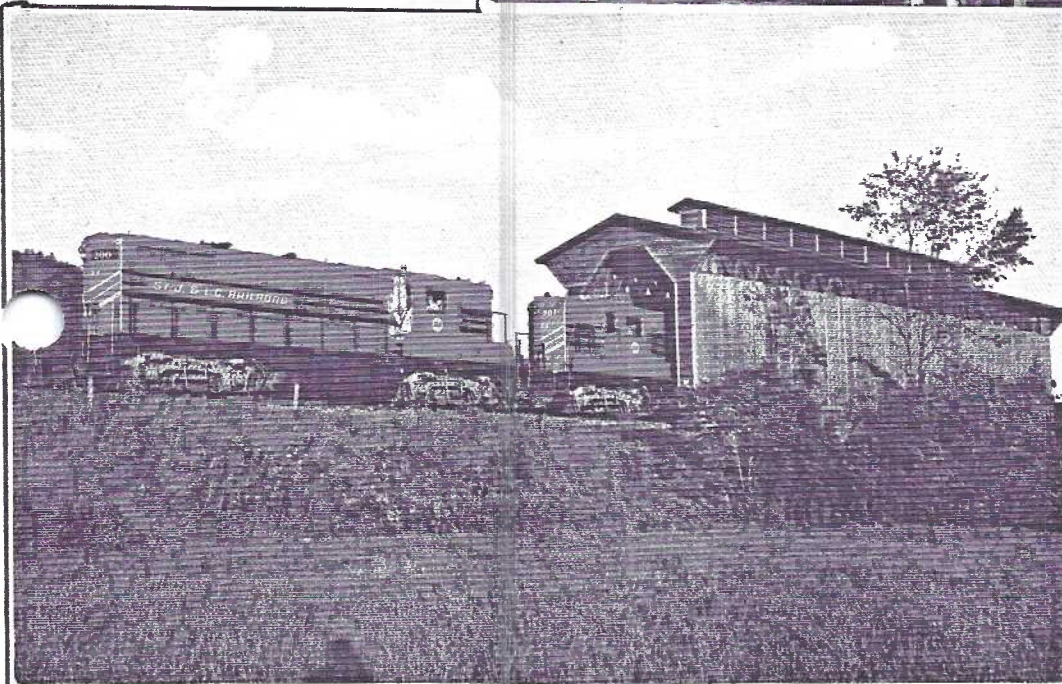
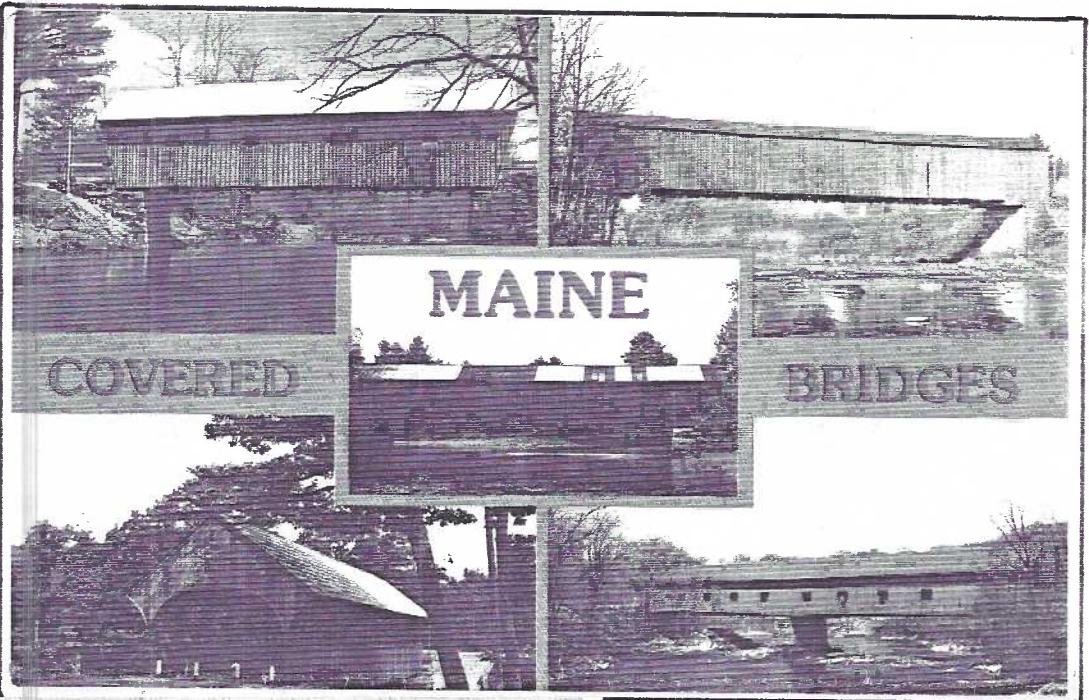


This real photo PC of the bridge at Lumberville, Bucks County, PA. clearly announces "FREE BRIDGE - NO TOLL", as it was in direct competition to a ferry boat upstream on the Delaware River. But it warns "Speed Limit 8 mph, Gross Wgt. 2 Tons. Only one max load per span at one time. No Passing, Penalty - Arrest and Fine by order of St. Comm. Unknown publisher. Card is cancelled April 13, 1938.

BRIDGE AT LUMBERVILLE PA

35

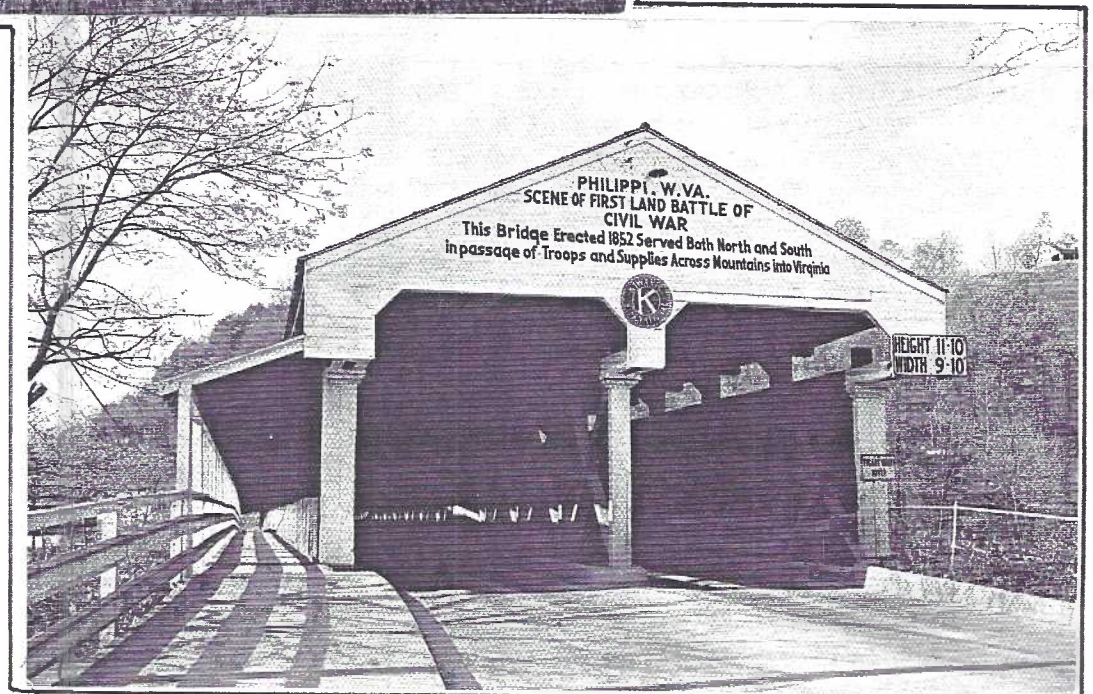
Even a "new" multi-view chrome such as this K101133 by Plastichrome can be obsolete. The lower right Morse bridge(WGN 19-10-01) at Bangor was gone in 1992. Top left. Lovejoy (WGN 19-09-01)at Andover; top rt.Low(WGN 19-11-01) near Sangerville; center Hemlock(WGN 19-09-02) near Fryburg. About the Sunday River Bridge at Newry (WGN 19-09--04) lower left, author Richard Sanders Allen quips "artists portraying this bridge have daubed more paint on canvas than has ever been slapped on its weatherbeaten sides".

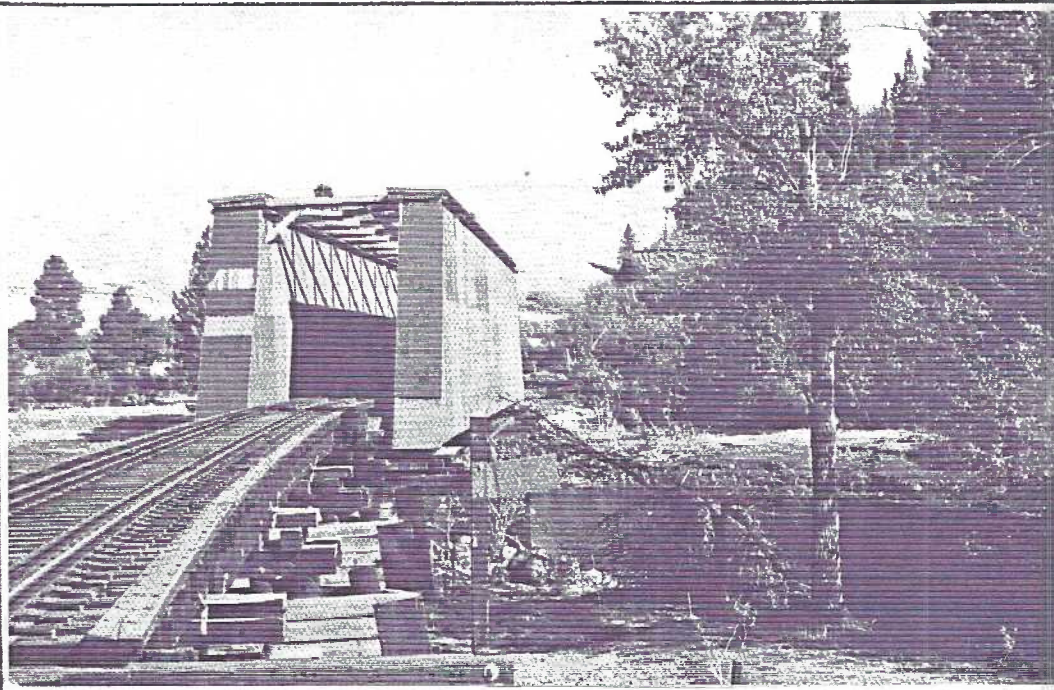


#45-08-16 The Fisher Bridge at Wolcott, VT. was built in 1908. This Koppel #112888 PC states "it's the last covered RR bridge still in regular use in VT. The World Guide 1989 edition lists it in a roadside park. Note its full-length cupola which provided a smoke escape. Preservation was achieved by private donations and state funds.

Russ and Martha Holmes #82, #81 say a train rushed by while they lunched there a couple of years ago. A park? - "no way"! It could be the last covered RR bridge operating in the whole USA.

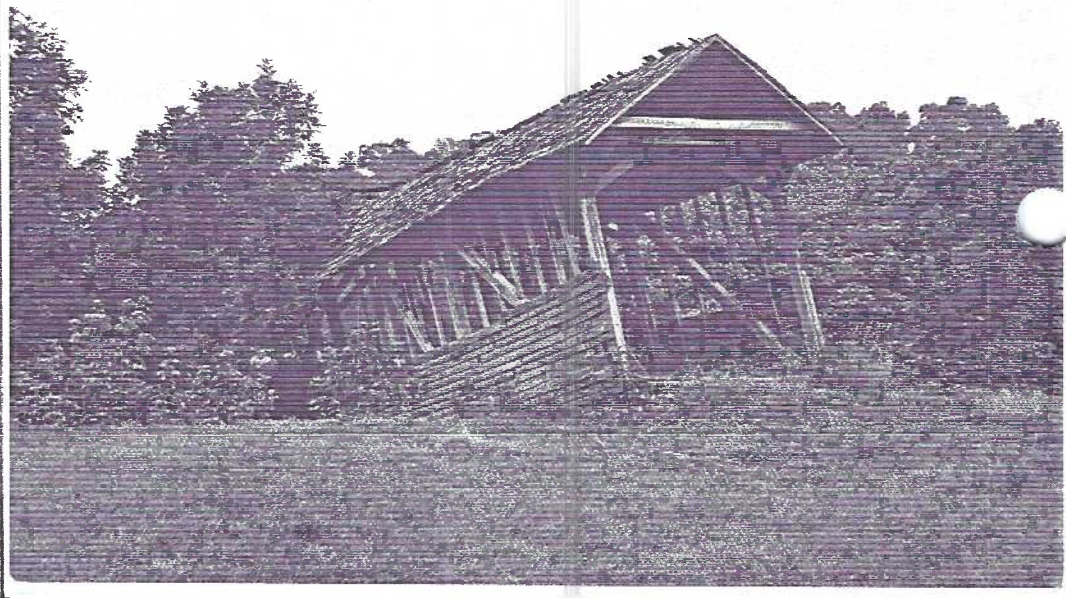
It would take ten postcards like this Dexter S4049-B to describe the details surrounding the SCENE OF FIRST LAND BATTLE OF CIVIL WAR that the Philippi, W. VA. bridge boasts on its portal. #48-01=01 still stands on US #250. It's two spans are 304' long and now have a cement floor (added when repairs were made in 1989 after extensive fire damage).





#47-38-01 serves as an example of an OPEN TOP BOXED type of covered bridge. Across the Palouse River in Washington state it reminds us that the purpose of covered bridges was to protect the superstructure (in this case the side trusses of this railroad bridge. Koppel printed the #95907 card for Ellis PC Co. of Arlington,WA. There were only six covered bridges remaining in the entire state in 1989.

This Koppel S-63963 card for Thompson's Community Service, Paris, TN. is appropriately titled A DYING BRIDGE "The Bloomingdale cov. bridge (WGN #42-82-01)...ll w.of Bristol, Tenn., had a 44' span and was constructed about 1880. This view shows its dilapidated condition in the summer of 1965." (ED.NOTE - the plea for help went unheeded. The 1989 World Guide no longer listed the bridge.)



Part Two next month: Lancaster's Covered Bridges including a postcard publisher list

THE THEODORE BURR COVERED BRIDGE SOCIETY of PENNSYLVANIA, INC. meets monthly (generally in Lancaster Co.) Membership is \$7 (\$10 for a couple) For more information write Russell J. Holmes, Box 95, Seven Valleys, PA., 17360 or speak with **Mary Darrenkamp** or **Jim Ward** at our meeting.

ENCLOSURE COMPLIMENTS OF LCPC

To publicize covered bridge month we've enclosed a postcard (C-12) from John Lehman's local view set (March **CARD**). **Ed note:** Thank you for the many favorable comments re the story.

Mr. Lehman admits the portal view is generic but "a good representation of most Lancaster County bridges". (Note the Theo. Burr arches that support the interior sides.)



EXHIBIT WINNERS



Politics/Politicians was a tough subject for a club comprised mostly of novice collectors and so drew only five boards.

JIM WARD FIRST A White House Album
LAURA SPECE SECOND It All Started W/ George
BOB KRAMER THIRD Four Slain Presidents

HONORABLE MENTIONS

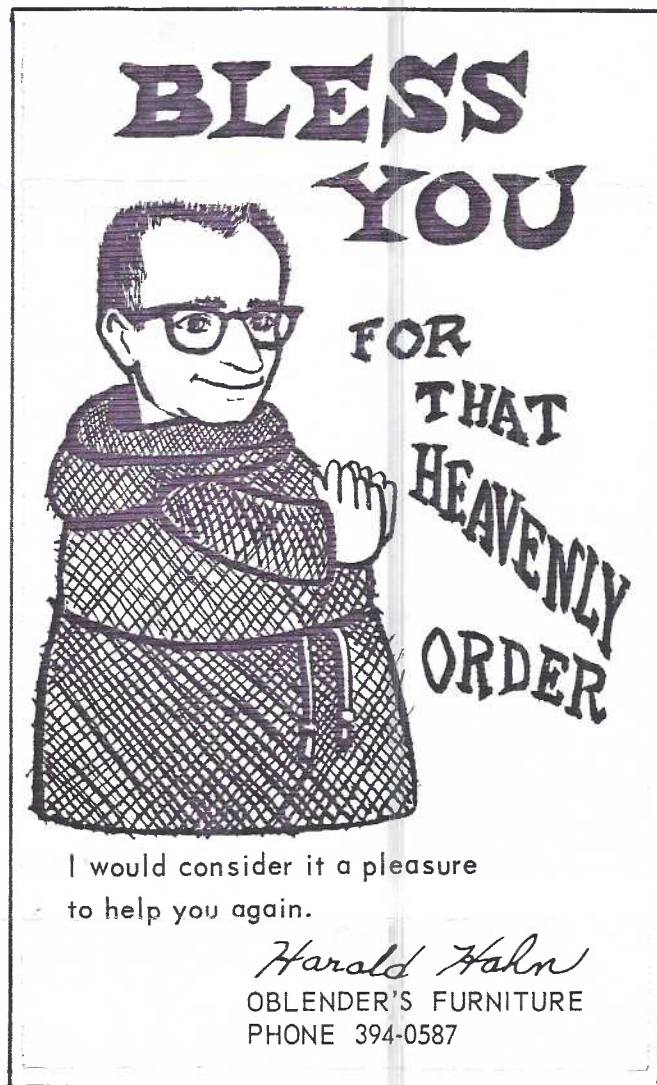
HAROLD MOYER Our Choice
BILL WEIKERT Post Cards - The Big Shew

May's topic is **POSTCARDS USED IN BUSINESS** This is easy and could include old salesmen's appt. cards or new chrome automobile models - or lots of other exciting subjects! And **Dot** has chosen **BACKSIDES** for June (and we hope she means the "message side" of postcards!) Examples: unusual messages, cancellations, fancy publisher logos, etc.

100 YEARS OF CREDIT

One hundred years ago **Christopher W. Oblender** founded an auction house and used furniture store in Columbia, PA. In 1931 he relocated to 41 S. Queen St., Lancaster and Oblender's has been a successful resident there to this day.

They attribute their success to credit. Credit to single women when 'it just wasn't done'. And they financed their own accounts- and still do. (Note the stock message on the PC shown from their early Columbia store.)



A bit of humor sneaks through this **THANK YOU postal card** from an Oblender salesman. A 5¢ Lincoln imprint dates it around 1968/9.

AN ANSWER TO INQUIRIES

Since August 1992 we've had **THE CARD** printed by SIR SPEEDY in Lancaster. They use a **XEROX #5090 set in photo mode**. It's not a laser copier, but does comparable work (for which we're receiving many nice comments especially from other postcard club editors).



CUTE was the by-word when a business wanted their potential customers to remember them. So **CHILDREN** and **ANIMALS** often appeared on store advertising cards...cards that might be kept for years in the home - and which reminded them of the store. This type PC is an extension of the **trade/advertising cards** that preceded postcards by nearly 30 years.

The unused d/b German produced PC by an unknown publisher reads, "Dear Friend: We have the Finest Assortment of Heaters and Ranges in Columbia. Come in and get one and keep warm this Winter. If you do not want to pay Cash for it you can pay a little each pay day. We Trust the People and the People Trust us. C.W.OBLENDER CO., 219/221 Locust Street, Columbia, Pa. Furniture, Carpets, Stoves. See Our Window."

Thanks for the comments - and we're passing them on to Sir Speedy. A picture's worth a thousand words - and we like to translate them the best we can.

Our cost is about .35 per copy for our monthly 8-page issue. (225 printed).

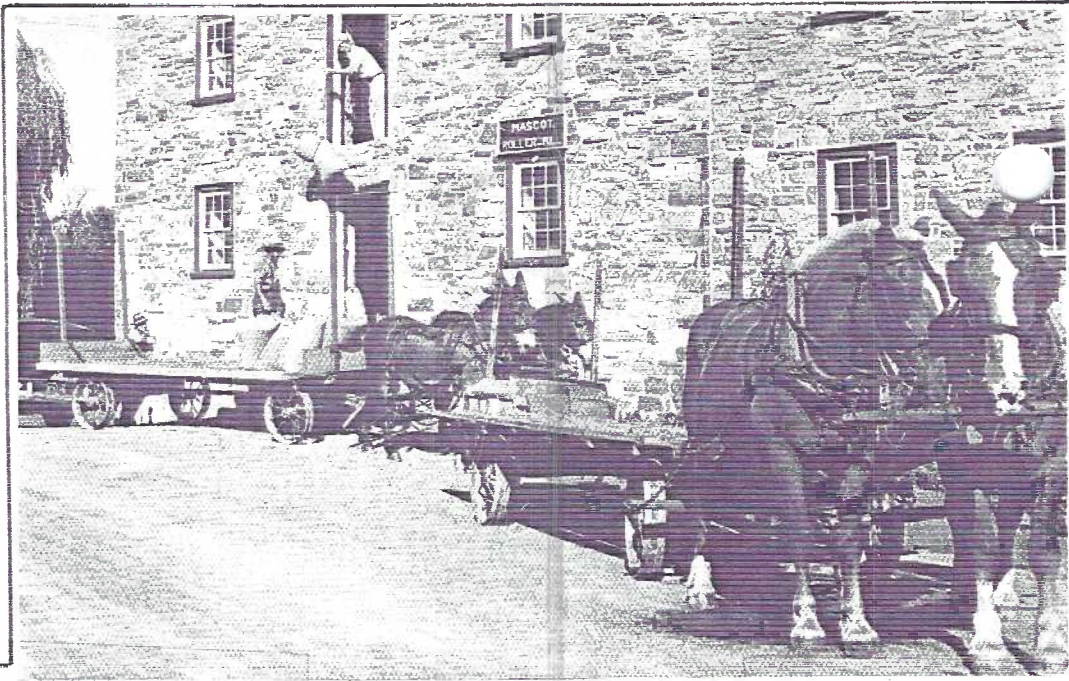
MASCOT MILL

Mill Creek, Upper Leacock Twp.

Few mills can boast being on the National Register of Historic Places. The Mascot Mill can, due to the efforts of Franklin Ressler who recently died at 92.

He had adamantly maintained the authenticity of both the mill and its post office (in operation from July 1890 to March 1934).

Dexter #21031-B (rt.) publ. by Jas. Hess shows Ressler lowering a bag of grain to an Amish farmer in the wagon below.



Tomlin #28016 (lft.) publ. by Mel Horst, 1969, reads "...Mascot Roller Mill...is the oldest continuously operating grist mill in U.S...". It has since ceased operation.

The huge willow tree seen in PC #3 (Tomlin #38588 by Horst for Dutchland Tours) has been severely cropped. The mill along with the handsome Ressler home are maintained by the Ressler Mill Foundation.

Ressler's mother chose **Mascot** as the name for the PO when the Postmaster General suggested "no more 'burgs' or 'villes'". **Mascot** was a dog in a play the senior Ressler saw on their honeymoon in 1890.

This third postcard would fit well in the category of ADVERTISING (note bus sign) and MILLS rather than AMISH.





1994 WINSCH HALLOWEEN CHECKLIST

Hazel Ieler's long-awaited revision now
in LCPC Library

If you're either a Halloween collector or a Winsch fan, you can spend hours with this 27-page well-illustrated checklist. If you're neither, you should still borrow it and learn from an authority another facet of our wonderful hobby.

We're proud to say these LCPC members aided Hazel in her work: **Andreas Brown, Dorothy Ryan, Dede Schaeffer, Daisy Schaeffer and Anne Steinberg.**

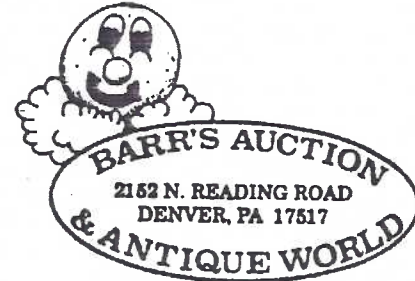
See **Laura Spece**, our new Librarian for the booklet.

1994 POSTCARD COLLECTOR ANNUAL

With only a few hours to scan this yearly issue by Jones Publishing, I am thoroughly impressed. If you've never purchased any of the Annuals this should be the one. The basic collecting information - by experts - makes the issue worth twice it's price(JFW)

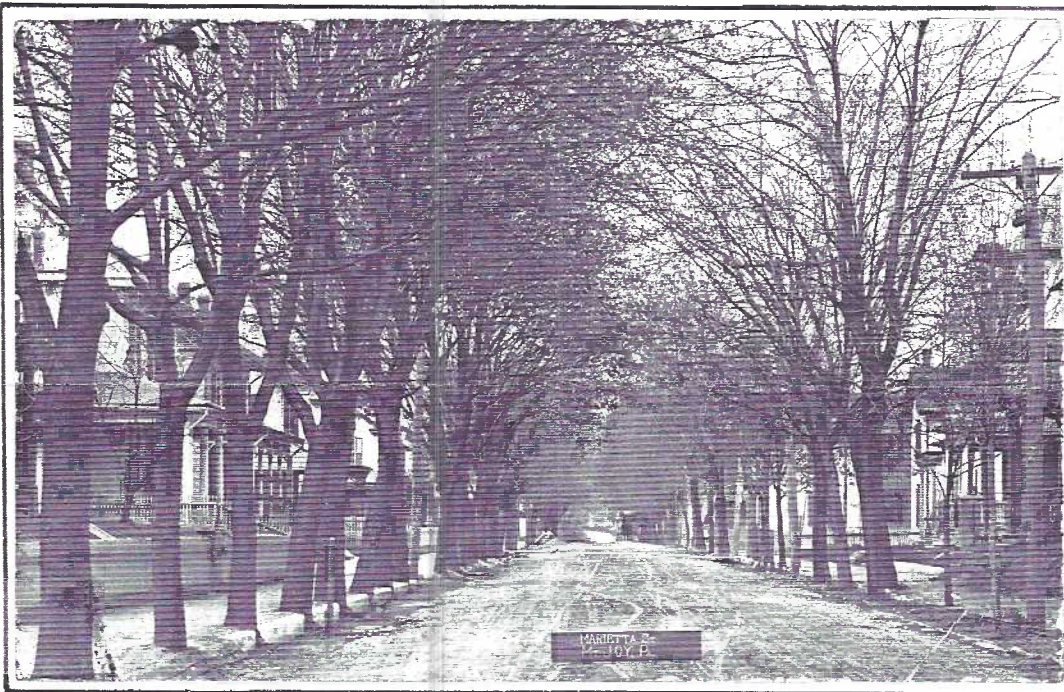
Our Library has a copy. You'll like it!

John Klein
Postcards



Exit 21
Pa. Turnpike

Saturday 10-5
Sunday 8-5



HEY!
DIDN'T YOU
SEE THAT
SIGN?

What sign?

The big six foot sign propped up in the center of the street!

These large signs, with the names of the street and the town will be the subject of a future story in **THE CARD**. Gerald Hostetter has seen examples of over a dozen from Florin, Hummelstown, Mount Joy, Millersville and Terre Hill.

Do you remember any in your collection? Even if it is a town outside Lancaster County he'd like to know about it. Please contact him at P.O.Box 1, Mount Joy, PA 17552; phone 1-717-653-4505. Just as important - can you supply any information about the publisher of these divided back **real photo** PCs? perhaps the photographer?

Sign in center of street reads "MARIETTA ST./MT. JOY, PA."

THE CARD

Staff Dot Fry, Charlie Griffiths, Gerald Hostetter, Jim Rudisill, Jim Ward, editor. Circulation Harold Fry, Gwyn Fulmer. Articles, suggestions, correspondence: 1795 Kleinfeltersville Rd., Stevens, PA. 17578-9773.

PROGRAM

Member Show 'n Tell (April's program) has always been enjoyable. Space permits only a brief description of each offering:

DON DAVIS 2 PCs from a small Canadian fishing village; plus a humorous mag. excerpt.

MARY DARRENKAMP a PC sent to her Mother in 1920 from her Dad when they were dating.

EARL CARVER a hotel at Wild Cat Falls over the river from his hometown of Marietta.

BETTY BROWN a human hair PC that led to her joining our Club. (Glad it happened, Betty!)

BILL HEADLY a real photo of "Thunder Cloud" showing authentic Indian clothing.

LEW BECHTOLD a fairground where horse racing tracks eventually became auto racing!

HAROLD MOYER a cute baby has its behind kissed by a gentleman when PC is folded.

ELIZABETH GRAVER an album of 'throwaway' PCs (advertisements sent through the mail).

Visitor from W.VA. her high school (1926) now condemned because of asbestos in the walls.

BARB MOWRER Galen Longenecker (a relative) on an Amish tractor.

NOVELDA FERGUSON real photo PC of family members next to her grandfather's barn.

DAISY SCHAEFFER her sister on a real photo PC printed right in their home.*

WALT MOWRER his aunt at Palisades Park, 1944 and a PC from his grandfather during WW I.

JIM WARD non-competitive poster board of Covered Bridges used with **MARY DARRENKAMP**'s first public program (before LCPC Apr. 1990)

*a detailed explanation re Kodak's signature cameras and early amateur photo PC development ensued by **JOHN LONG**. **JOHN'S** extensive camera collection and how postcard photos are made would be an excellent program for the future.

The diverse interest of our members is wonderful and always makes for a great program. THANKS TO ALL. Let's do it again!

ANNE IN MAY

Anne Steinberg, one of our Charter Members, always has a fine program and in May we can be sure to expect another. Her slides will be from her hometown of Quarryville. She adds "and there will also be favorites - both views and greetings. In other words, a little of this and a little of that".

(ED. NOTE: It's never just 'a little' from Annie with an "e".)

LCPC MEMBERS BRING HOME THE BLUE

At the Milwaukee Postcard Show, now sponsored by IPA (International Postcard Association, Inc.) members **Jose Rodriguez** and **Jim Ward** garnered the following ribbons:

REAL PHOTOS 1st (JR) Real Photo Deltiology

PUBLISHERS 1st (JR) Mellinger's Diners

NOVELTIES 1st (JW) Handmade Postcards*

SET/SERIES 1st (JW) Leap Year Ladies

ADVERTISING 2nd (JR) Sold! On Linens

GREETINGS 2nd (JR) Merry Christmas RFD

ANY OTHER 2nd (JR) An Art Deco Potpourri

*also awarded an EXCELLENCE ribbon. Details will be in the Postcard Collector.

Jim Morrison #260 also displayed 96 boards of Art Deco PCs and 40 boards of Scotland - all non-competitive! Congratulations all!

NEW MEMBERS

#320 JACQUELINE M. FLAHERTY 1206 Fremont St. Lancaster, PA. 17603. 393-9253. Collects Lords Prayer, angels and other religious PCs.

#321 BOB KUREY Dealer. Collects real photos, linen adv. PCs with wife **MARY #262**.

#322 RUTH FRANKHOUSER 114 N. Roberts Ave., New Holland, PA., 17557. 354-7611. Old F&M College; Millersville Normal Sch.; Wheatland; local bridges (incl. Witmer); N.H.; Lancaster.

WELCOME TO OUR CLUB. We're 219 strong!!

IMPORTANT BITS 'N PIECES

LCPC 1994 POSTCARD EXPO

Gen. Chairman **Bob Kramer** announced 2/3 of the tables are sold and the show listing will appear shortly in the PC media. Publicity Chrm. **Lew Bechtold** will have a sample postcard and display poster in May.

Barb Heim, Barb Mowrer, Sandra Shaub, Mary Darrenkamp and **Elizabeth Graver** are the volunteer Kitchen Krew. They'll give us details on needed help in May. Suggested exhibit rules and categories will also be presented in May by Chrm. **Jim Ward**. Ideas should be given to him, **Ruth** or **Harold Moyer**.

NPW - May 1-7, 1994

National Postcard Week will be honored in 1994 by LCPC with a card designed by **Don Davis**. (Print run and details not available at this printing.) Arrangements were not made in time for our usual Park City Mall display. Let's do it NOW for 1995!

We've seen several members' NPW cards including **Anne Valsing's**, **Earl Carver's** and **Jim Ward's**. Look for them in **Barr's News**.

WANTED

Royersford-Spring City PA. postcards, trade cards, Stove Company advertising items or what have you? Call **Bill Buckwalter #163** at 1-717-627-1181 anytime or send copy to: 35 Front St., Lititz, PA. 17543-1807.

AUCTION LOTS

Final notice: June Auction Lots due at May meeting. **Norm Zimmerman** already has some fine local real photo views.

MEMBER/DEALERS

70 members and guests present in April could shop with **Bill Buckwalter, Gordon McKinzie, Howard Steinberg, Jim Ward, Merv Wenger** and **Norm Zimmerman**.

FUTURE SHOWS



May 7-15 **BRIMFIELD, MA.** Postcards at Brimfield. A week-long mini-show! Free adm.

May 7-8 **TOWSON, MD.** Postcard Festival. Holiday Inn, Cromwell Bridge Rd., 10 to 7, 10 to 5.

May 13-14 **YORK, PA.** Postcard/Stamp Show. York Mall, 10 to 9. Free adm.

May 27-28 **HAGERSTOWN, MD.** Postcard Society. Howard Johnson Hotel. 9 to 6, 9 to 3. \$1

June 4 **CAPE MAY, NJ** First United Methodist Church, 9 to 5. \$1

June 5 **SHAMOKIN DAM** Susquehanna Valley PC Club. Days Inn. 9 to 4. \$1.