

The Card

MONTHLY PUBLICATION OF
LANCASTER COUNTY POSTCARD CLUB
LANCASTER, PENNSYLVANIA

MEETINGS: 3rd MONDAY
FAITH UNITED
CHURCH OF CHRIST
1204 WABANK STREET
LANCASTER, PA

May 1993 - Vol. 4, No. 5

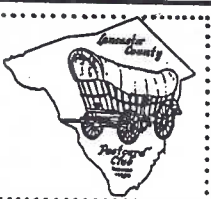
NEXT MEETING

May 17, 1993 7 pm
Buy/Sell/Trade 6 pm

Yearly membership is \$7 (plus \$3 per person, same address).

Articles and correspondence to: P.O. Box 300, LITITZ, PA.

17543-0300. Ads: \$15 full pg., \$8-1/2 pg., \$5-1/4 pg. prepaid.



MONTHLY EXHIBITS



It was another great night for Exhibit Boards and thanks to **Chrm. Charlie Griffiths** and his able assistants, 78 members and guests had a few minutes to learn more about **Indians/Native Americans**.

HARRY and RUTH LINES FIRST Osage Indians of Pawhuska, Okla., 1909

JIM WARD SECOND American Indian Portraits

HAROLD MOYER THIRD American Natives

HONORABLE MENTIONS

BETTY BROWN First Americans in Full Dress Parade

EARL CARVER Our Finest

EARL CARVER The Earliest Americans

POLLY CURTIS Wyoming and Idaho

ELIZABETH GRAVER The Vanishing American

KATIE STEHMAN Indian Chiefs

NORM ZIMMERMAN Legends

Ruth attributes their first place winning to their class in Making Exhibit Boards but we all know it was the real photo cards **Harry** inherited - and he showed only a few!! A number of the exhibits were modern chrome PCs gotten on trips and from Dover books, but the variety of **Native American** postcards (including **Dede Schaeffer's** excellent album) are a tribute to our continued interest in sharing our hobby with others.

Charlie reminds us that May's theme is **ROYALTY**. And looking ahead **RELIGION** will be the topic in June. His list of possibilities seemed endless - and a big help! For instance in addition to the likely Lord's Prayer and Ten Commandments sets, there are countless art cards, Madonnas, statues, totem poles, local and unusual churches, Martin Luther, Billy Sunday, the Popes, Quakers, Shakers and Amish and of course, religious holidays. So get busy!! And don't forget - this is all great practice for our August Expo where **EXHIBIT BOARDS** will occupy an honored space!

THE CARD STAFF

Artist Jim Rudisill. Proofreader, Indexer, Now and Then Columnist, Info. Contributor and Mentor Charlie Griffiths. Editor (the buck stops here) Jim Ward. All correspondence to P.O. Box 300, Lititz, PA 17543-0300.

VOLUME XLI.

NUMBER 3.

PARK'S FLORAL MAGAZINE

MARCH, 1905.



NEW CARMINE-SCARLET STAR FLOWER.

Weslana Sanderson is a glorious new hybrid Star Flower and the novelty of the season. Easily started from seeds, grows three feet high, bears a marvelous profusion of elegant carmine-scarlet flowers through the season. Large, showy, open day and night, and exquisitely scented. Beautiful as a window plant, gorgeous in a bed. A flower destined to become wonderfully popular. Has been awarded first prizes and gold medals wherever exhibited. I offer seeds direct from the introducer, *Weslana Sanderson*, original packets at 25 cents; small packets, but enough for a fine large bed: 10 cents a packet, 3 packets for 25 cents.

SPECIAL—To anyone sending three subscriptions to this Magazine at 10 cents each, (or 15 cents each if premium of 12 packets Flower Seeds or 10 packets Vegetable Seeds is wanted) I will mail 3 packets of this Splendid Novelty—*Weslana Sanderson*, free. Forward promptly.

PARK'S FLORAL MAGAZINE, LaPark, Lancaster Co. Pa.

GEO. W. PARK, EDITOR & PUBLISHER.
LA PARK, LANCASTER CO. PA.

E.O.Y.

Our illustration is not a postcard, but it does represent a grand institution in our County at the turn of the century. The local business generated at least 12 postcards and hundreds of part-time jobs for school children and housewives as well as men willing to work 10 hrs. a day, 6 days a week.

In 1905 **Park's Floral Catalogue** had a monthly print run of 391,000 copies! This circulation plus thousands of seed and bulb mail orders were why Geo. W. Park operated a U.S. post office within his own seed factory, very near his own printing shop. He was permitted to give the post office a name and chose **LaPark**.

Yes, this is the same Geo. W. Park Seed Co. of Greenwood, South Carolina that you and my Aunt Ada order from religiously each winter. In confirming their present address with my aunt, I discovered **Park's 1993 Springtime Planting Book** had a 2-page spread commemorating their 125th anniversary!

Story continued pgs. 4 and 5

NPW - LCPC EXPO CARD COMBO

LCPC elected to use a variation of our FIRST ANNUAL SHOW/EXPO postcard for its 1993 NPW entry. They will be available at the National Postcard Week display and promotion booth in Park City on May 8.

As in previous years the postcards are numbered and if you act quickly your own LCPC number can be gotten, along with as many others as you wish for 25¢. Hours at the NPW booth are 8 am to 10 pm.

FIRST ANNUAL
LANCASTER POSTCARD EXPO 1993
sponsored by the
LANCASTER COUNTY POSTCARD CLUB

National Postcard Week
May 2-8, 1993
#100
of 300

Saturday, August 21, 1993
9 AM to 6 PM
FARM & HOME CENTER
1383 Arcadia Rd. off Manheim Pike (Rte. 72)
Lancaster, PA

25 DEALERS 100 EXHIBITS

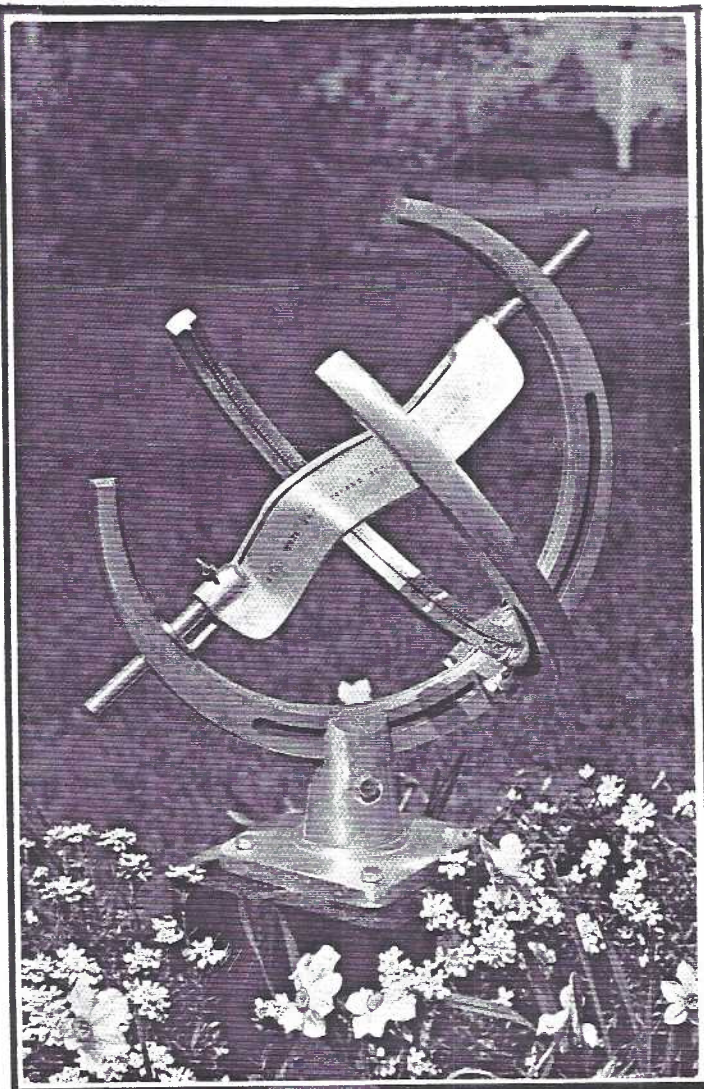
DOOR PRIZES, FOOD, FREE PARKING, AIR CONDITIONED, NO STEPS!
\$1.50 adm., \$1 with this card

FUTURE SHOWS



- MAY 8** TOWSON, MD. Postcard Society. Quality Inn. 10-4 Free adm.
- MAY 9-19** BRIMFIELD, MA. Postcard & Ephemera Center. Brimfield Acres N. 9-9. J. Rodriguez (203) 2721143.
- MAY 14-15** YORK, PA. York Mall, E. Market St. 10-9. Free adm.
- MAY 28-29** HAGERSTOWN, MD. Postcard Society Ho-Jo Hotel. 9-6, 9-3. Free adm.
- JUNE 6** SHAMOKIN DAM, PA. Susquehanna Valley PC Club. Days Inn. 9-4. \$1
- JULY 4-11** BRIMFIELD, MA. Same info. as May 9-19 show.
- JULY 9-10** YORK, PA. York PC Club. Aldergate Ch., Tyler Rd. off S. Queen St. 10-6, 9-5. \$1.50 Adm.

IT'S DAYLIGHT SAVING TIME HAVE YOU TURNED YOUR SUNDIAL AHEAD?



From Dexter Press comes this postcard #73385-B, photo by Jim Hess for Richard L. Schmoyer of Stony Battery Rd., Landisville, PA. It shows the ultimate in a sundial for your flower garden and keeps accurate time.

Adjustable for latitude and longitude, this sundial corrects for irregularities of local SUN time with changes of seasons. A band of sunlight between shadows progresses along an equatorial time-scale and can be reset for DST. Turning the gnomon by hand narrows and shifts the band from SUN to CLOCK time for reading between the 5-minute graduations.

Some postcarders collect SUNDIALS which are elusive. But this has to be the ultimate in accuracy - and from Lancaster County!

Mr. Schmoyer, a retired engineer from Armstrong and RCA, designed a wooden prototype. His sundial article in Scientific American (Oct. '59) drew much attention. He has marketed 175 of his aluminum creations (mostly in 8-piece kits) to astronomy clubs, college science depts. and individuals around the world. Complete instruction manuals contain the postcard which he used in correspondence, too.

Besides his very own SUNQUEST sundial his yard also contains three home-made vertical sundials, one of which works only on DST!

ROSTER CHANGES

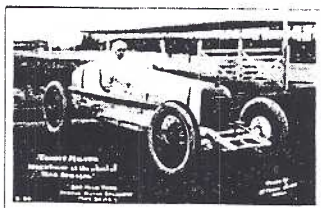
MAY 15 is DEADLINE for changes you may wish to make for our 1993 Membership Roster. Call Gwyn Fulmer at 569-0688 or write her at 1400 Buch Av., Lancaster, PA 17601. Correction from April CARD: Leslie Hart #245 lives at 176 Scotland Rd., Quarryville, PA, 17566.

LANC. COUNTY in 3rd PC ANNUAL

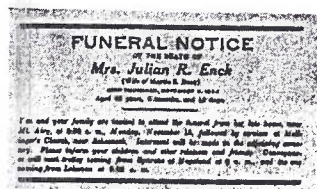
May 1993 pg.3

The third edition of the **PC COLLECTOR ANNUAL**, in addition to feature stories highlighting ten decades of postcards, has an article composed largely from the collection of John and Sandy Millns. The Millns, for many years, have sought out a different card representing each of 100 years of PC collecting.

Lo and behold, for 1922 (with a magnifying glass) you can detect a **Lancaster County** specimen, albeit a funeral notice.



1923: Tommy Milton, winner of the Indianapolis 500, at the wheel of H.C.S. Special. Real photo postcard by W. Frank Jones.



1922: Friends and relatives were invited to attend Mrs. Julian R. Enck's funeral and interment via this postcard message.

1923 and 1922 cards from 100 YEARS article.

Mrs. Julian Enck, died on Nov. 9 at age 63. The postal? card invites attendance to... "the funeral from her late home, near **Mt. Airy** at 9:30 am, Monday, Nov. 13 followed by services at **Mellinger's Church near Schoeneck**. Interment will be made in the adjoining cemetery. Please inform your children and other relatives and friends. Conveyances will meet trolley coming from **Ephrata** at **Hopeland** at 9 am and the one coming from **Lebanon** 9:30 am."

Our 1992 LCPC Pres. Dot Fry was only a lass when **Mrs. Enck** died but Dot remembers her mother and many others from northern Lancaster County who lamented the passing of "such a pleasant and charming conversationalist. Julie's death was a shock to the community."

"She had gone to visit a sick member of a family in Philadelphia" Dot continues. "And because these folks knew Julie was accustomed to kerosene lighting, they reminded her to turn off the gas jet in her room, instead of blowing out the flame as she was prone to do with kerosene at home. In the excitement of her new surroundings, Julie forgot the warning and was found dead the following morning from gas inhalation."

CARVER HOSTS TRIP TO ISRAEL

Buy your Holy Land postcards with member **Earl Carver**. He will host a 10-day tour to Israel, November 8-17, 1993. Call 684-3069 if you would like to go with his group. Brochures are available. (ED.note: where could you find an English-speaking host, a 'local yokel' who's been there before, and a great sense of humor all for "no additional cost" ??)



REASONS TO EXHIBIT

- 1 **SHARING**. Enjoying your postcards is contagious. Your enjoyment will spread to others.
- 2 **EDUCATING**. Collectors and non-collectors want to learn-even a little bit, and you'll be amazed how much more you'll learn about your own cards as you prepare the board.
- 3 **CAMARADERIE**. You can share your common interest with exhibitors and collectors of your favorite subject.
- 4 **SENSE OF PRIDE** Like grandchildren, there's a warm feeling when you see a smile or hear a compliment about something of yours.
- 5 **THRILL OF WINNING** Even an **HONORABLE MENTION** will be a reminder of your participation in your Club's first show many years from now.

EXCUSES NOT TO EXHIBIT

- 1 **I DON'T KNOW HOW**. Informal classes and discussions are going on right now! Join one by contacting Charlie Griffiths (8725043) or Jim Ward (6264660).
- 2 **MY COLLECTION ISN'T COMPLETE**. No collection of postcards is "complete". Completeness of sets counts only a fraction and many award-winning exhibits do not even have sets.
- 3 **MY CARDS AREN'T VALUABLE**. Rarity counts as only a small fraction of even a good exhibit. Presentation, information and creativity are far more important.
- 4 **I DON'T HAVE TIME**. The Show is four months away - plenty of time to plan a simple yet effective board. Don't try to do too much in your first exhibit. But start today!
- 5 **I'M CONCERNED ABOUT SECURITY**. All exhibits will be covered in plastic bags and Club members (people you know) will be with the exhibits -before, during and after the Show.
- 6 **I CAN'T STAY FOR THE WHOLE SHOW**. Talk with the Exhibit Chairman or General Show Chairman (Griffiths and Ward, see above). Arrangements can be made on a personal basis.



At least once each year (no reason why it couldn't be more often) we have a **Panel of Experts** answer any and all questions members may have about postcards. May is the month, so bring your "stumpers" to the meeting. Perhaps your query will be answered more easily if you bring the card in question with you.

Questions might be on the number of cards in a set or unknown publishers and artists as well as unidentified postcards. Or maybe you've been stimulated by a subject in our **Club Library** and wish to do further reading - where do you go next?

LaPARK PA POSTCARDS continued

According to the Paradise, PA. 250th Anniversary Celebration book (1962) Park came to Paradise, Lanc.Co. in 1880 with his small seed business from Fannettsburg, a tiny village in Franklin County northwest of Chambersburg where he began it all in 1868.

The map shows where George Park purchased an existing mill along the Pequea Creek and built the huge three story frame building seen on postcards.

At the time of our postcards (1905/18) 40 to 50 workers filled seed packets, counted bulbs, filled orders and mailed catalogues. Girls addressing catalogues were paid 25¢ per 1,000 pieces.

Mr. Park sold the prospering business in 1918 and married Mary Barratt of Greenwood. The business continued at LaPark for many years. In the 1930's it was owned by Wm. Frew who also gave many young people employment including **Members #125 and #126, Ralph and Ruth Bair.** Ralph worked there for his Uncle Bill through the 1930's. He and Ruth were employed there in 1947 when it was known as Paradise Seed Co. On Dec. 31, 1947 fire destroyed both buildings (shown on the postcards). The Paradise Fire Co. was recalled the next day. Smoke was still coming from the structure on Feb. 5, 1948!

LaPark Seed and Plant Co. "sowed the seed" for similar Paradise firms: Eby's Lancaster County Seed Co. (later Girvin's), Mrs. Eddy's Bulbs, Paradise Garden Service and Shreiner's Greenhouses.

Thanks to Ralph and Ruth and also Ray Leaman of the Paradise-Leaman Place Fire Co. for info.

CHECKLIST OF LaPARK POSTCARDS

Additions always appreciated. Contact Chas. Griffiths, 15 Circle Rd., Millersville, PA.

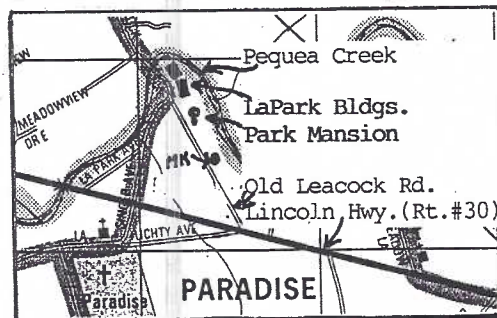
All postcards horizontal unless marked V
L.B.HERR PRINT (all black and white postcards)
 The Home of Park's Floral Magazine, LaPark, Lancaster Co.
 The Pequea, at LaPark, Pa. (both undivided backs)

L.B.HERR for Henkel & Cougill Pubs., LaPark, Pa.
 Beehives and Hyacinth Beds. Grounds of Geo.W. Park, ...V
 Dam on Pequea. Grounds of Geo.W. Park, LaPark, Pa.
 Greenhouses. Grounds of Geo.W. Park, LaPark, Pa.
 Hyacinth Bed. Grounds of Geo.W. Park, LaPark, Pa.
 Main Office Building. Grounds of Geo.W. Park, LaPark, Pa.
 Tulips at rear of Main Office Building, Grounds of Geo..
 Residence of Geo.W. Park, LaPark, Pa.

Real Photo PC (AZO stamp box w/triangles)
 (Picture is home of Park's Floral Magazine-no caption)

Real Photo PC (AZO w/squares, front caption in white)
 OFFICE LaPark Plant & Seed Co. PARADISE, PA.
 Printing Press LaPark Seed and Plant Co. Paradise, Pa.

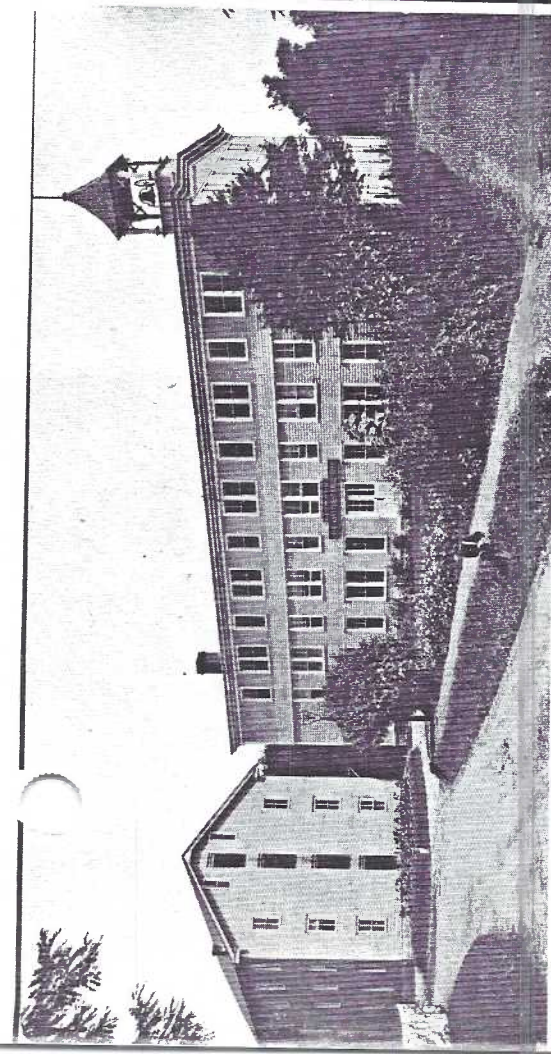
THANKS to Bill Buckwalter and Gerald Hostetter for info.



If you travel to Paradise to see the LaPark site, do it on May 15 and participate in member #231, Miriam Keneagy's house and antique sale, marked MK. (This is an unsolicited ad.)



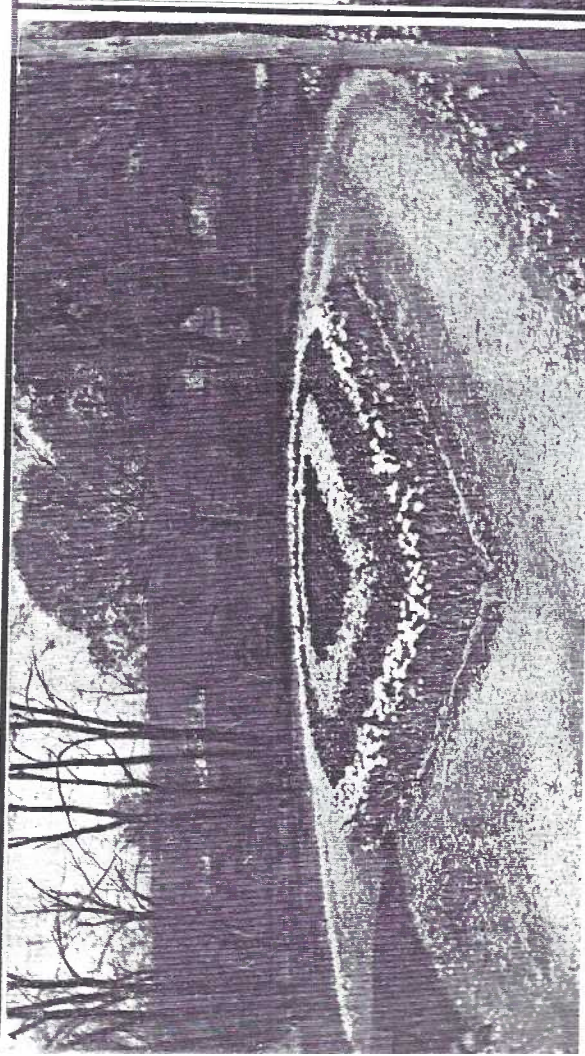
In the bins can be seen the latest copies of Park's Floral Magazine from Pequea-powered printing presses. The 3 known real photo postcards all have an AZO stamp box.



L. R. Herr Print

The Home of Park's Floral Magazine, LaPark, Lancaster County, Pa.

The tower bell rang at ten minutes before 7 am, at noon, at 1 pm and at 6 pm, Mon.to Sat. On Saturday the day ended at 5 pm. The extra 10 mins. each day gave the men their full 60 hour week!

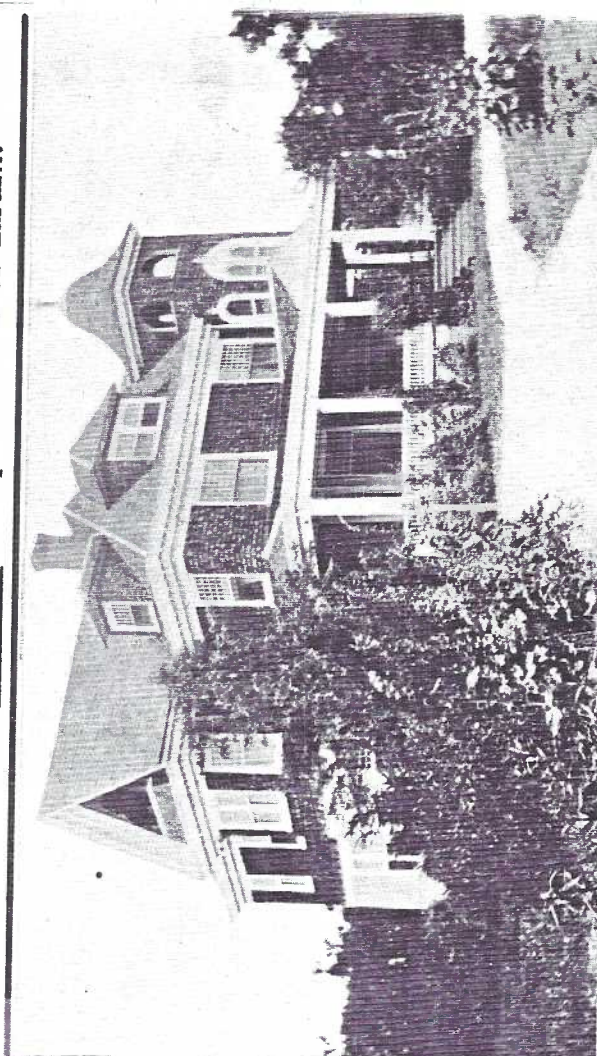


Henkel & Coughill, Pubs.,
La Park, Pa.

Tulips at rear of Main Office Building.

Grounds of Geo. W. Park, La Park, Pa.

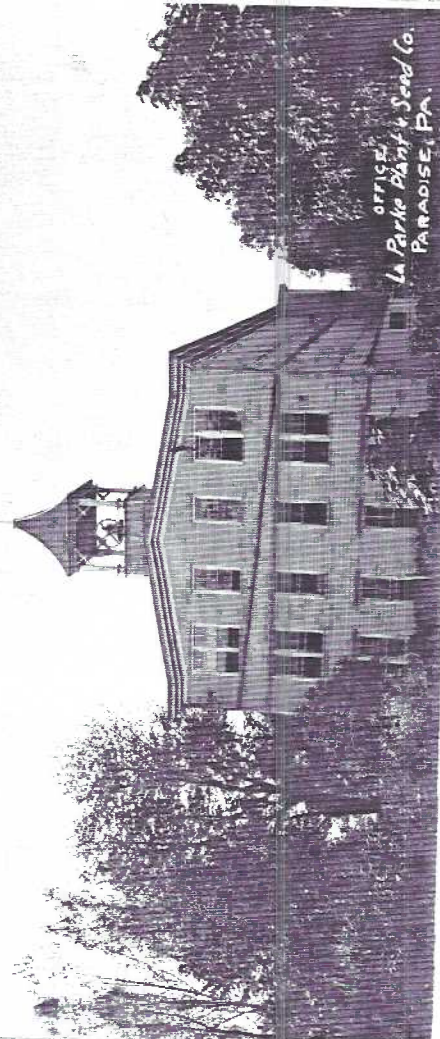
Tulip bed resembles similar beds of bulbs used throughout early Park catalogues. The seven Henkel & Coughill PCs have divided backs The LaPark Post Office was active from 12/19/02 to 3/31/40.



Henkel & Coughill, Pubs., La Park, Pa.

Residence of Geo. W. Park, La Park, Pa.

Today the Park mansion is the same except that lg. trees obscure the brightly painted yellow home which stands near the site of the seed building and mill (both destroyed by fire).



OFFICE
La Park Plant & Seed Co.
PARADISE, PA.

Real photo PC has cancellation July 9, 1912, LaPark, PA. and is an invitation from Mary Park to Mrs. Harry Keller at Intercourse. Do you know of any other cancelled real photo cards of LaPark?



Collectors of flowers on postcards must have among their treasures at least a few of the beauties by Czech artist **Catherine Klein**.

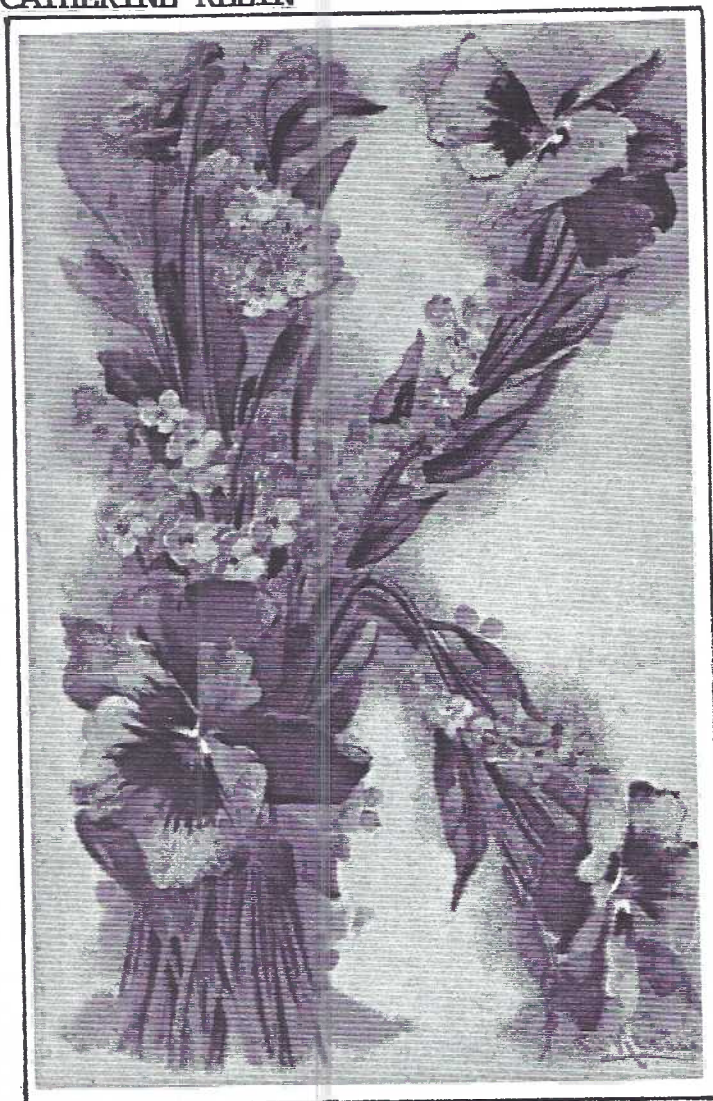
Dorothy Ryan, in Picture Postcards in the US, 1893-1918 states "the Klein style tends toward the impressionistic with bold splash-
es of color realistically applied as petals and leaves. She was especially fond of roses but also painted lilacs, pansies, and many other blooms".

If you're new to Klein, perhaps you'll wish to start with flowers, nuts or other still lifes and work your way up to the ultimate - her creative **alphabet flowers**. Of these, Dorothy says "each card features a letter.....formed by leaves, petals and blooms of a particular flower..." in set #148 of 26 images by an unknown German publisher.

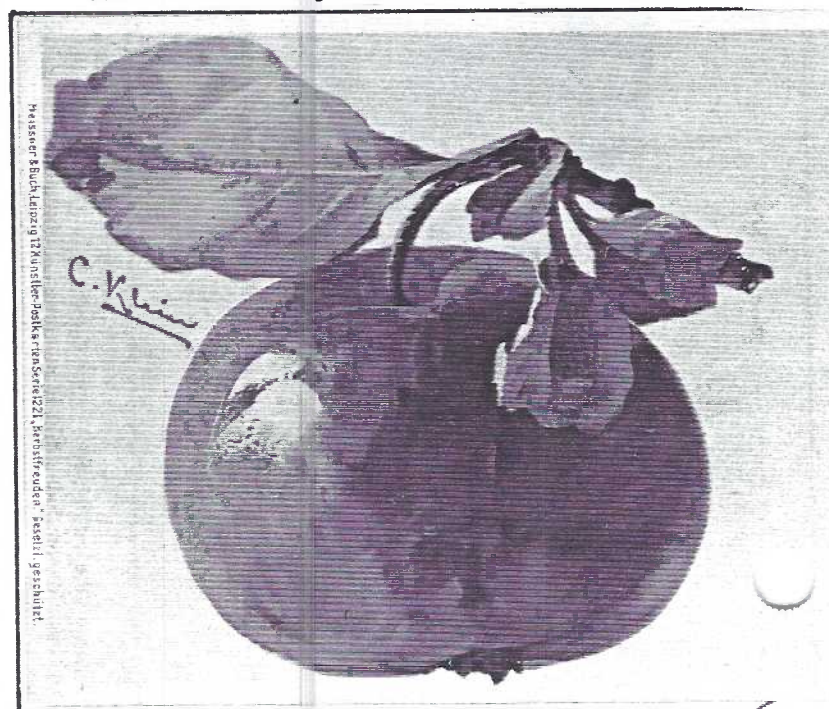
Tuck and International Art also published the Klein flowers and you can even find them reprinted in Hallmark greeting card stores.



The letter "G" done in orange tones. C.Klein signature, lower rt. Fred Ripperger had sent the Nov. 11, '07 cancelled card to Miss Anna Heyer, Lexington Ave, Hackensack, New Jersey.



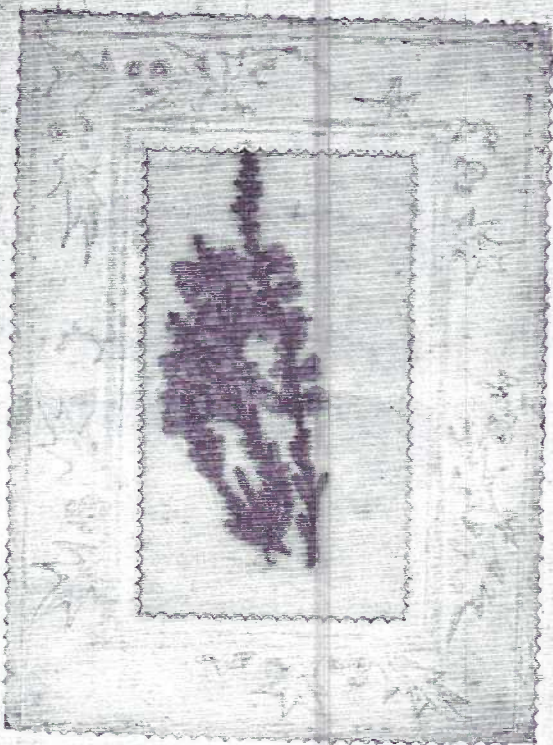
An unused, divided back "K" by C.Klein composed of bluets and tall stalks of yellow-bronze pansies. Unknown German publisher who used the multi-lingual reverse. Set #148.



A delicious Klein apple, Series #1221, published by Meissner and Buch, Leipzig, Germany.

IT WENT THROUGH THE MAIL!

A 'now-n-then column' of unusual postcards that were actually mailed, post-marked and delivered. Do you have an example to include?



A Sprig o' Hielan' Heather,
Frae dear auld Scotia's Hills.

Allan Junior.

148

Postmark Rothesay(Scotland) Sep.9,1912 to a lady in Kent,England.The **sprig of heather** is still sealed behind a thin sheet of tissue! Und/back PC by John Allan,Glasgow. ..."I don't think you will have a PPC (picture PC) like this in your collection..."

APRIL AUCTION ACTION

Another fine auction with the help of **Walt Barb,Darvon,Jere** and **Bud.LCPC** nets \$51.50 after \$460 goes to sellers. Gross = \$511.50

1 1	26 7	44 1	62-3 4	83 2	101 2
2-4 1	27 1	45 3	64-5 16	84 1	102 1
5-10 2	28 6	46 1	66 7	85 6	103-5 2
11 50	29 10	47 1	67 4	86 12	106 1
12 2	30 2	48 1	68 4	87 4	107 1
13 2	31 2	49 1	69-70 4	88 8	
14 30	32 6	50 1	71 6	89 4	
15 1	33 1	51 5	72 10	90 2	
16 10	34 14	52 9	73 3	91 2	
17 4	35 5	53 1	74 1	92 2	
18 5	36 12	54 5	75 1	93 2	
19 2	37 12	55 2	76 1	94 9	
20 2	38 13	56 2	77 9	95 1	
21 4	39 10	57 8	78 4	96 1	
22 11	40 7.50	58 5	79 9	unlisted lots	
23 1	41 13	59 7	80 8	97 2	
24 2	42 3	60 2	81 1	98-9 1	
25 31	43 2	61 7	82 2	100 2	

BOOK REVIEW

If you know **Ron Menchine** from local postcard shows and club attendance, you'll understand immediately that **A PICTURE POSTCARD HISTORY OF BASEBALL** is authored by an expert on the subject. In addition to being an avid **baseball postcard collector**, Ron's life has been baseball for over 50 years.

Two Associated Press awards in sports broadcast excellence, Pres. of the Society of Baseball Research and numerous articles on both **postcards** and **baseball** attest to his expertise.

A Picture Postcard History of

Baseball

by Ron Menchine



Introduction by Ernie Harwell

Over 230 full-size BB PCs are the icing on the cake. But what is most important is that a more thorough history of the USA's favorite outdoor sport as it pertains to postcards cannot be found! Ron gives us a chronological display of the players, teams and stadiums in the Major League concluding in 1959.

As might be expected, emphasis is on the earlier decades(prior to 1920)reflecting the decline of cards after World War I as well as a halt in the construction of most Major League baseball stadiums.

Deltiological details such as publisher, manufacturer, type and postmark (if any) are mentioned for each postcard. Ron also offers a value index.

With the season upon us, this is "must reading"for baseball fans as well as those curious to have a glimpse of the sport.

See **Librarian Bill Buckwalter** at the meeting or reserve the book: 627-1181.

We're

The Lancaster County Postcard Club.

We collect postcards for

BEAUTY,HUMOR and HISTORY

Our 'page of postcards' this month features the work of artist C.Bunnell. This 1908 Series #2083 by Fred Lounsbury is a mixture of humor and the serious side of the holiday. It is bordered in light blue with predominate blue and red in the drawings. Lounsbury and Bunnell collaborated on several patriotic sets (usually four rather than six cards per set).

DECORATION DAY



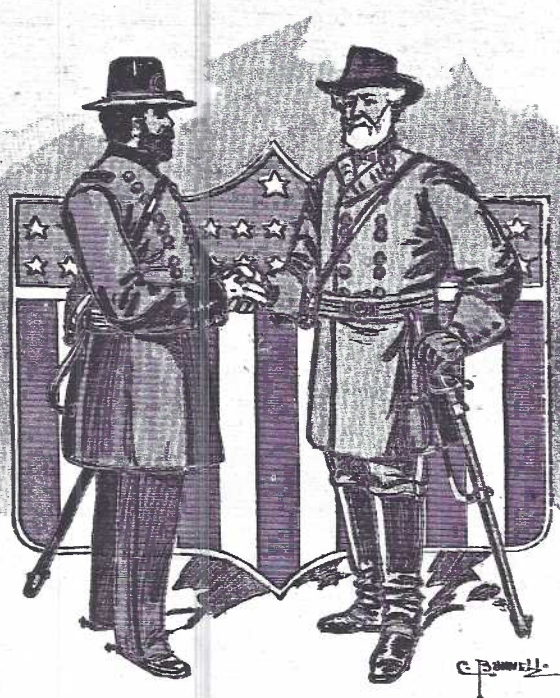
(2083-1)

Mamma

Copyright 1908 by Fred C. Lounsbury.

The Blue and The GRAY.

DECORATION DAY



(2083-2)

Copyright 1908 by Fred C. Lounsbury.

Under ONE Flag.

DECORATION DAY

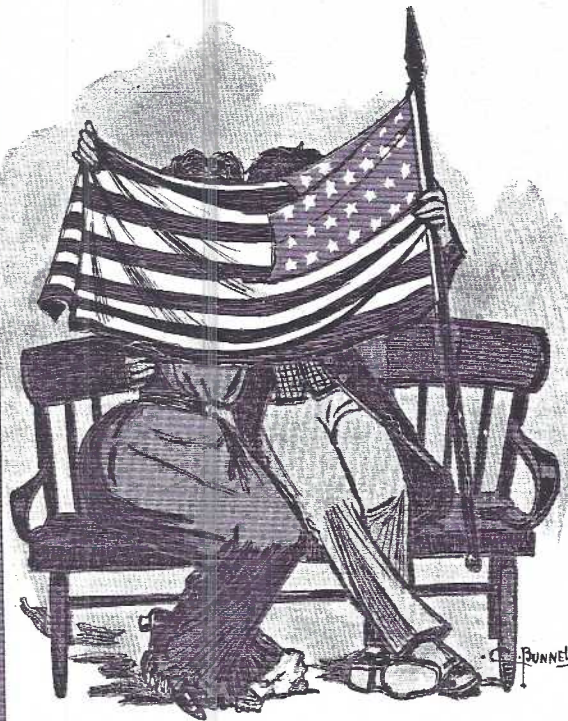


(2083-3)

Copyright 1908 by Fred C. Lounsbury.

They GAVE Their ALL.

DECORATION DAY



(2083-4)

Copyright 1908 by Fred C. Lounsbury.

Story of the FLAG.