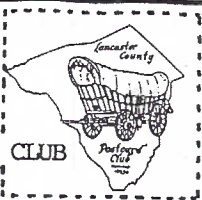


The Card

MONTHLY PUBLICATION OF
THE LANCASTER COUNTY POSTCARD CLUB
LANCASTER, PENNSYLVANIA

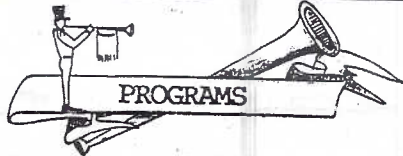


MEETINGS: 3rd Monday
FAITH UNITED
CHURCH OF CHRIST
1204 Wabank Street
Lancaster PA

February 1993
Vol. 4 No. 2

NEXT MEETING
February 15, 1993, 7 pm
Buy/Sell/Trade 6 pm

Yearly Membership is \$7 (plus \$3 per person, same address). Mail articles and correspondence to: P.O. Box 300, LITITZ PA 17543-0300.
Ads: \$15 full pg. \$8 1/2 pg. \$5 1/4 pg. prepaid.



President Don Davis served up his first meeting in fine order and rather than be inaugurated with cake in the face he chose to eat some ANNIVERSARY CAKE like the rest of us. It's an LCPC tradition - to celebrate our first meeting of January 1990 with big eatin's = cake decorated w/Conestoga Wagon.

In lieu of a program, there was an auction of 90+ lots. Davis announced the Directors suggested 3 auctions per year instead of 4. February's Program will be Show'n Tell by the membership. It's been a popular program and all members are encouraged to bring a postcard or a PC story.

A Suggestion Box was donated in the form of Mrs. Davis's shoe box. And other important business was that THE CARD will be mailed First Class for awhile.



EXHIBIT WINNERS



Charlie Griffiths broke into his new job as Exhibit Board Chairman by making formal presentations to last month's winners and initiating a discussion on this month's entries. Winter Sports and Activities made a fine showing before a large crowd of 73 members and guests.

SANDRA SHAUB FIRST
HAROLD MOYER SECOND
JIM WARD THIRD

Winter Wonder
Winter Fun
Snow Showers Bring
Pleasant Hours

HONORABLE MENTIONS

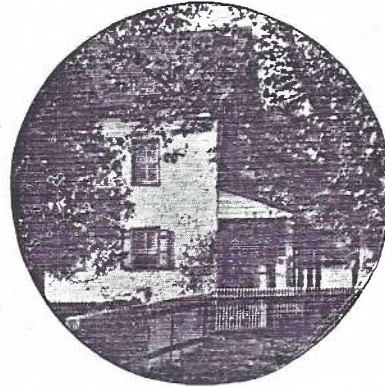
RUTH LINES
ETHEL ZIMMERMAN

Winter Sports
Happy Memories

Chrm. Griffiths announced a wide open field for February = Linens (any subject as long as it's on linen postcards). And working ahead, you can start on March's subject Lions and/or Lambs.

On a related subject, Jim Ward offered free beginners classes on making Exhibit Boards. Everyone will be making at least Honorable Mention boards in just two hours!

Robert Fulton's Birthplace, Fulton House, Lancaster County, Pa.

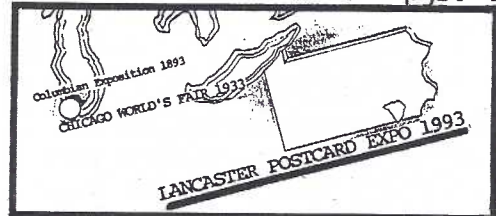


The large buttonwood tree grew from a riding switch stuck in the ground by Mrs. Esther Swift, grandmother of the present owner of the Fulton Homestead, Mr. Joseph Swift.

9-

Fulton House was a post office from June 17, 1853 to Dec. 31, 1919. This divided back PC by an unknown publ. is hand-dated 9/23/09.

Robt. Fulton and The Clermont - pgs. 4-5.



This will be a regular column to keep you on top of our FIRST POSTCARD SHOW - The Lancaster Postcard Expo to be held at The Farm and Home Center, Saturday, August 21, 1993.

General Chrm. Jim Ward read the Dealer Contract and Cover Letter to the membership. His committee, Gerald Hostetter, Jere Greider, Charlie Griffiths and Jose Rodriguez have made one minor change = there will be a \$1 admission charge rather than a donation. This will simplify matters = and our first year should be kept as uncomplicated as possible.

Jose sent out many contracts on February 1 and they are being honored on a First Come - First Served basis. Single booths are \$80 plus LCPC membership. If for some reason a dealer has been missed, he may contact either Jose Rodriguez at 1-203-272-2841, Box 903, Cheshire, CT 06410 or Jim Ward at 1-717-626-4660, Box 300, Lititz PA 175430300.

Hours will be from 9 am to 7 pm with dealers setting up from 7:30 am. To be fair to collectors, dealers are committed to absolutely no pre-show looking or buying by themselves, their employees or their agents. And of course this will apply to all LCPC show committee members as well.

Watch this column for additional information as it evolves.

NASH'S LINCOLN CENTENNIAL SOUVENIR SET

One of the most colorful sets of 6 PCs commemorating Abraham Lincoln was this 1809 1909 series. Published at the height of the postcard era, one card in particular exemplified Lincoln's personality. The Bixby Letter became a national symbol of condolence.

"Dear Madam, I have been shown in the files of the War Dept. a statement of the Adjutant General of Mass. that you are the mother of five sons who have died gloriously on the field of battle. I feel how weak and fruitless must be any word of mine which should attempt to beguile you from the grief of a loss so overwhelming. But I cannot refrain from tendering you the consolation that may be found in the thanks of the republic they died to save. I pray that our Heavenly Father may assuage the anguish of your bereavement and leave you only the cherished memory of the loved and lost, and the solemn pride that must be yours to have laid so costly a sacrifice upon the altar of freedom. Yours very sincerely and respectfully, A. Lincoln."

The other five PCs in Nash series 1 are: Rail Splitter, Inauguration Speech, White House and Emancipation Proclamation.

It was Lincoln's "home state" of Illinois that first declared his birthday, Feb. 12, a legal holiday in 1892. By World War I it was a national holiday. PCs honoring his birthday began about 1906.

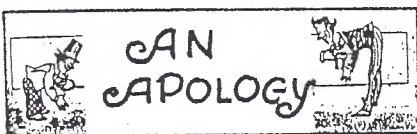
NEW MEMBERS

#238 TIM EMERICH 15 Overhill Dr., Lancaster, PA 17602. 464-4029. Collects old Lanc. City and County and world tourist attractions.

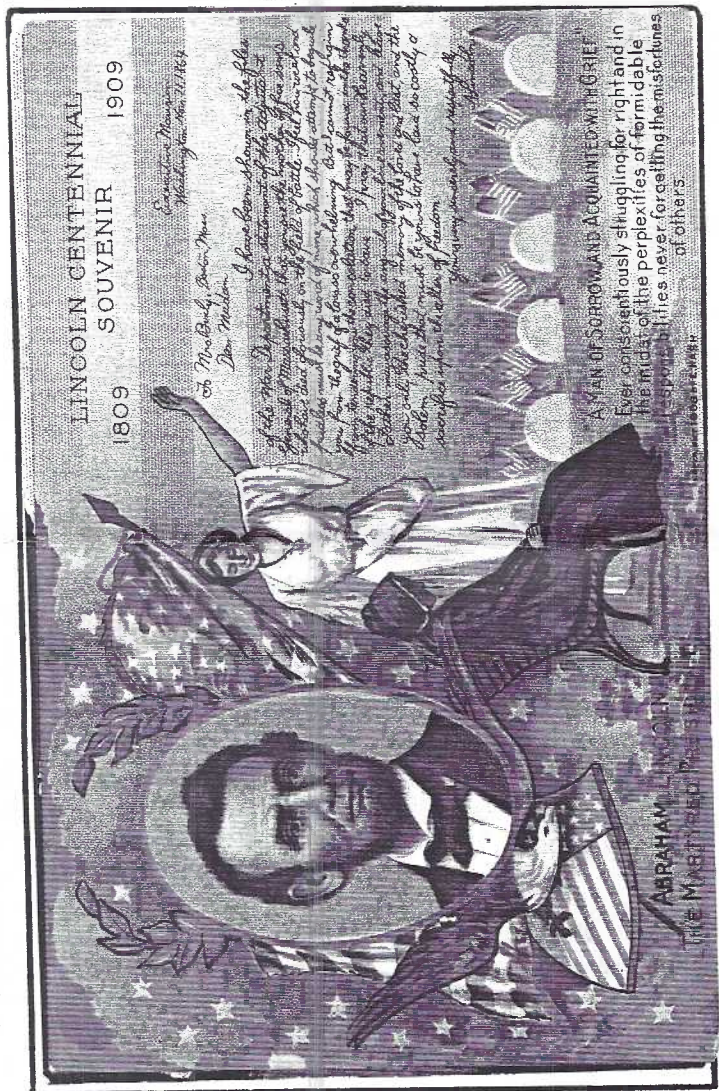
#239 NOVELDA FERGUSON 332 Stanton Rd., Quarryville, PA 17566. 786-3937. Collects holidays, cats, children and anything unusual.

#240 JOHN RODKEY JR. 730 Chestnut St., Columbia, PA 17512. 684-7873. Collects Columbia

240-24=216 actual members...but ask your fellow members - have they paid their dues? Delinquent members will NOT be receiving THE CARD this month. .035 x 8 pgs. = .28 + .04 for holes = .32 + .30 postage + env. = .62 x 12 issues = \$7.44 Do you see why we need their \$7 dues?



In the Postcards of Lebanon History member #159 Valeria Wolfe was over-looked. We wish to apologize to Val and remind you she contributed over 20 cards to the history!



AUCTION ACTION

Once again we thank Walt Mowrer and his Auction Crew: Darvin Rodgers, Jere Greider and Bud Heim for their volunteered help.

Lot #, price			
1 1	27 3.50	51 1	76 11
2/3 3	28 6	52 21	77 3.50
4 1	29 6	53 32	78 11
5 1	30 1.50	54 16	79 5
6/7 3.50	31 5	55 4	80 4
8 1	32 2	56 6	81 6
9/10 4	33 2	57/58 2.50	82 2
11 4	34 4	59 1	83 5
12 6	35 7	60 31	84 6
13 1	36 1	61/62 44	85/86 5
14/15 7	37 6	63 55	87 1
16/17 2.50	38 1	64 2.50	88 2
18 1.50	39 1.50	65 2	89 3.50
19 1	40 1	66 6	90 11
20 9	41 3	67/68 4.50	91/92 3
21 18	42/43 1	69 13	93 3
22 3.50	44 5.50	70 17	94 2
23 3	45/46 2.50	71 3	95 1
24 1	47 3	72 17.50	
25 2.50	48 7	73 37.50	
26 2	49 17.50	74 11	
	50 1	75 6	

Gross \$583.00 - #60(donated) \$31 = \$552.00
10% Comm. \$55.20 + \$31 = \$86.20 to LCPC.

Let's discuss and vote on AUCTION BUSINESS:

- 1) Frequency of club auctions.
- 2) Content, particularly non-postcard items.
- 3) Payment to sellers.
- 4) Auction fund.

GOOD ARTICLES FROM EXCHANGE POSTCARD CLUBS

The following are articles of interest which have been retained from exchange bulletins of other postcard clubs. Bulletin name is in parentheses. * notes recommended articles.

EXCHANGE POSTCARD CLUB ROSTERS

To borrow, see Charlie Griffiths
 Club Founding Year Location
 Anthracite '87 Clarks Summit PA
 Arkansas '70 Little Rock AR
 Indianapolis '74 Indianapolis IN
 Metropolitan '46 New York NY
 Susquehanna Valley '82 Sunbury PA
 Webfooters '66 Portland OR
 Windy City Chicago IL area
 Wolverine '54 Detroit MI area

ADVERTISING - A.T.& T. (Tropical Topics); Campbell Kids (P.C. Digest) (Webfooter); Esquire magazine (Tropical Topics); J. C. Penny (P.C. Courier); Sambos Restaurant (P.C. Courier) (Webfooter).

ANIMALS - Pandas (Arkard).

ARCHITECTURE - Frank Lloyd Wright (Milwaukee).

CIRCUS - (P.C. Digest).

CLOWNS - Novelty cards (Twin City).

*COMICS - (Indianapolis); Hearst (Lehigh Valley) (Long Island); Vinegar Valentines (Torrance/South Bay).

COVERED BRIDGES - Oregon (Webfooter).

*DELTIOLGY - Linen postcards (Twin City); P.C. Projectors (WC4).

*EXPOSITIONS - Columbian (WC4).

HERALDICS - Nat'l Arms to College Fraternities (P.C. Digest).

*HOLIDAYS - Hallowe'en (San Jose) (Twin City).

MINING - How an Anthracite Coal Breaker works (Anthracite).

*PENNSYLVANIA - Turnpike (P.C., Denver, Colo.); York - Voters' Action League set (Lehigh Valley).

PHILATELY - Maximum cards (Heart of Ohio).

POLITICAL - Campaign P.C.'s (Capital of Texas); also see PENNSYLVANIA.

*PRETTY GIRLS - H. Fisher, L.A. Mauzan, A. Mucha (Heart of Ohio); Hahn (Indianapolis); Unusual set "Katy" Girls (P.C., Denver, Colo.).

PUBLISHERS/DISTRIBUTORS - Burton Frasher, Calif. publ. (Torrance/South Bay); Dating Curt Teich P.C.'s (Wolverine); Litchfield, Conn. area (Charter Oak); New Haven, Conn. (Charter Oak); I. and M. Ottenheimer (Charter Oak); Tuck "Rebel" Memorial Day (P.C. Digest); Tuck "Kings and Queens of England" and checklist (P.C. Digest); Williamson-Haffner (P.C., Denver, Colo.) also see PRETTY GIRLS - "Katy" Girls.

RAILROADS - Edaville (Cape Cod); Union Pacific (Arkard)

*RELIGION - Tabernacle Organ of Salt Lake City (Utah); The Last Supper (Webfooter).

SHIPS - Navy postcards - Battleships (Anthracite).

SILHOUETTES - (P.C. Digest).

SPORTS - Baseball Stadiums (Twin City).

TRANSPARENCIES - Luna (P.C. Courier) (WC 4); Kosmos (WC4).

W.W. II - Propaganda P.C.'s. (Twin City).

HOME-MADE VALENTINES -



Red paper heart. Carnations and cat are hand-painted. Cancelled 2/13/1949 to Mrs. Thomas, 40 West Main Waterloo, New York

Red paper cut-outs and blue ink. On postal card like cat above it. To Miss Addie Roth, Quakertown, Pa. Cancelled Richland Center, PA. Feb 14 1906 5 pm, received cancel Quakertown Pa. same day at 6 pm!



Beautifully inked, painted girl from Aunt Mary to Master Walter Kretschman, Children's Ward of German Hospital, Phila. Feb. 12, 1909.

Dear me
 Valentine
 Aunt Mary.

THE CARD STAFF
 Artist James Rudisill. Proofreader, Indexer, Now and Then Columnist, Info. Contributor and Mentor Charles Griffiths. Editor (the buck stops here) Jim Ward. P.O. Box 300, Lititz, PA 17543-0300 for all correspondence.

A love so fond and true,
 A heart of honest truth;
 I send dear one to you,
 A humble gift in soft
 What happiness would fill my breast
 If you would but love to test.



Pansy cut from seed catalogue to Miss Ida M. Lowry, New Holland RFD #1. Cancel. date poor "A love so fond and true, A heart of honest truth. I send dear one to you, A humble gift to sooth. What happens would fill my breast If you would put my love to test."

ROBERT FULTON

Ancestry Of Saxon origin, family came to America before 1735; 1764 - successful father bought 393 acre farm in Little Britain Twp (western part in 1844 became Fulton Twp. in honor of Robert who was born there **Nov. 14, 1765**); family incl. Robt., a brother and three sisters soon removed to Lanc. City but spent much of the summertime back at the farm with the Swift family (relatives).

In 1768 Robert's father died. Mrs. Fulton taught Robert to read and sent him to the school of a Quaker Tory at age eight.

Achievements

7/4/1778 fashioned sky rockets

Jun. 1779 experimented with air guns

Jul. 1779 operated fishing boat with paddle wheels in the Conowingo Creek

Oct. 1779 worked double crank paddle wheel boat on Conestoga River

1779-1782 painted pictures, drew caricatures and painted tavern signs

1782 removed to Phila where he painted miniatures and portraits of the Ross family, B. Franklin and other close friends

1785 purchased 84 acre farm in Washington County, PA to recover from declining health. Had mother and sisters reside there as well

1786 sailed to Europe

1786-1790 associated closely with long-time friend Benj. West

1793 in correspondence with Watt (the inventor of the steam engine) began experimenting with steam ships

1794 obtained Br. patent for inclined canal boat plane; marble-sawing; flax-spinning and rope-twisting devices. Introduced as the famous Am. engineer and inventor of the steamboat to Eng. poet S.T. Coleridge. Ancient Mariner - "But why drives on that ship so fast Without or wind or wave?" - 1794

1796 recommended to Pa. Gov. Mifflin a canal from Phila. to Lancaster to Pittsburgh

1796-1800 published continually on canals, free trade and torpedoes

1801 experimented with plunging boats

1802 Fulton-Livingston partnership executed 7/20/1807 in Govt. experiment, blew up with torpedo a huge brig in N.Y. harbor

8/9/1807 Clermont tested on East River

8/17/1807 Clermont's voyage on Hudson R.

9/2/1807 Albany-New York Steamboat schedule 10/1/1807 Clermont carries 60 passengers from Albany to New York in 28 hrs.

1/8/1808 marries Harriet Livingston, moves to New York City

Jan. 1810 exhibits models to Jefferson, Madison and others in Washington, D.C.

1810-1813 helps construct nine ferries and steamboats weighing up to 370 tons each

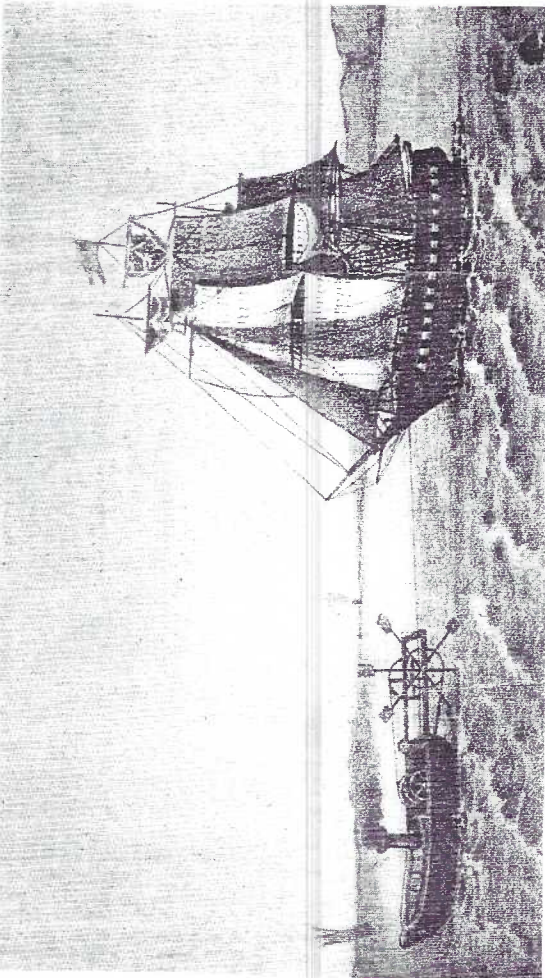
2/22/1814 projected and forecast Erie Canal to Gov. Morris

12/27/1814 contracted with US Govt. to use five of his steamboats to transport troops and munitions in war with Great Britain

1815 built first three of many vessels under excl. 25 yr. contract to Russian Empire

2/24-25/1815 died at Battery Place, rear of 1 Broadway, NYC; buried in Livingston vault

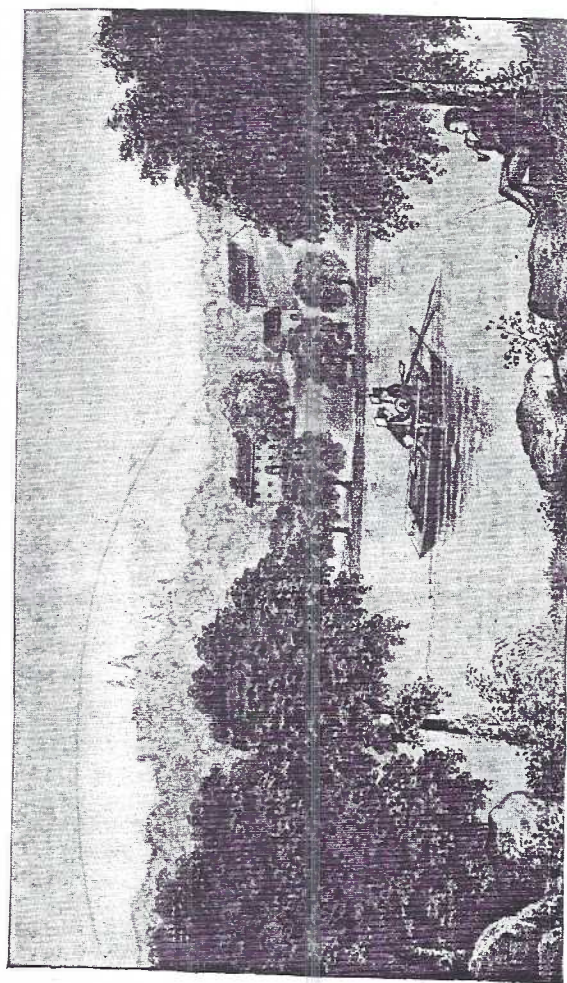
Jul. 1846 Ex-Pres. John Quincy Adams and others had Congress appropriate over \$76,000 to Fulton's heirs from a claim arising out of seizure of his steamboat Vesuvius by Gen. Jackson in defense of New Orleans



JONATHAN HULLS' STEAMBOAT (1737)

JONATHAN HULLS' STEAMBOAT. The first patent on record (1737) to propel a vessel by steam was devised to tow vessels out of harbors against tides and winds. Manhatten PC Series by Churchman Co., NYC.

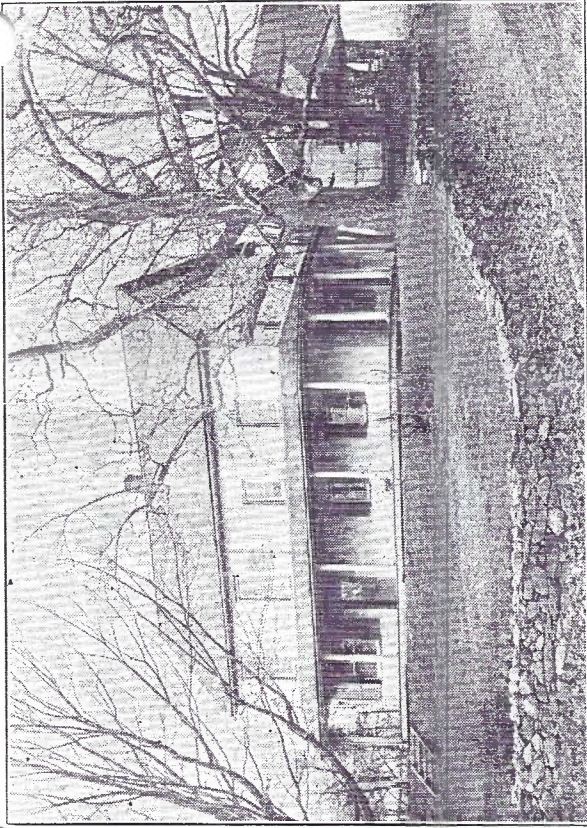
Other Fulton and Clermont PCs can be found by Bryant Union, F. Huld, Illustrated, Geo. Keith for Walk-Over Shoes, J. Koehler, J. Remick, Curt Teich, Tuck and Valentine.



ROBERT FULTON'S FIRST EXPERIMENT ON THE CONESTOGA

FULTON'S FIRST EXPERIMENT. 1 of 16 yellow/black Hudson-Fulton PCs publ. for 300th anniversary of the discovery of the Hudson River and the centenary of successful commercial steamboat navigation.

For local publishers of Fulton and Clermont postcards look for Conestoga Pub. Co., Landis Art Press, G.W. Pearthree of Peters Creek and several real photo cards.



J. A. Groff, Publisher.

Place of Robert Fulton's Birth, Fulton House, Pa.

devil on his way to Albany in a sawmill". By Illus. PC Co., #405/10.
An excellent rendition of Fulton home.Undiv.back/unknown printer.



Folded double-size PC issued locally to accomodate Hudson-Fulton Statue of Fulton and model of Clermont erected in Statuary Hall, U.S. Capitol by the Comm.of Pa. Reverse of PC shows #3 view, cancellation (9/25/09) is valued at \$750, other dates at \$15-25.

or An Overview of Pliable Punny Postcards

Okay, so you just don't have time for leather postcards. You must be an advanced collector(perhaps a specialist)uninterested in novelty and have a very tiny humor vein.

Some of us keep a leather or two just for "show n' tell" - for our non-postcard friends. Some of us may even have a few hidden in the back of a box because they came in a lot and we're ashamed to trade or sell them. But a COLLECTION OF LEATHER POSTCARDS! Unheard of.

And it's understandable - this aversion to disassociate ourselves from the ugliest members in Deltiology.

BUT WAIT A MINUTE! "There's someone to collect everything." There are those of us who enjoy Novelty. And there are the Archeologists among us who must simply dig until we learn something new. And these Lowest of the Low postcards are finding new homes in collections at an ever increasing rate.

WHY you ask? That question is difficult to answer. Perhaps a syndicate has taken a secret census for seven years at shows, auctions and of huge hoards of cards and, filing this data into a computer, have discovered that Leathers - as a type are scarce postcards! (DON'T QUOTE ME ON THIS!)

Nevertheless, for those of you who're still with us, here are some facts and statistics found in a collection of over 575 different leather postcards assembled in a five year period.

65% could be identified by publishers.

27% of those identified were by W.S.Heal.

21% were published by Hy.Sil. or M.A.Kraus.

The remaining PCs were by 22 diff. publishers whose names or monograms were equally divided between address and view side.

4% have patriotic or political themes.

6% were souvenir type, including views.*

10% holidays, esp. Valentine and Christmas.

Only 80% were comical (it seems like 99% when you see leathers in small quantities)

*four Lanc.City views by Hy.Sil.Mfg.Co., Boston are: **Centre Square, Post Office, YMCA and F&M's Old Main** (all with various borders).

Comics are generally crude jokes and puns and cover the same spectrum of themes found on most pre-World War I PCs: birthday, love, drink, sports, ethnic groups, rebus, etc.

Depending on when they were mailed, some leathers carry a 2¢ stamp (subject to an extra 1¢ postage fee). It's not too remarkable that leathers survived delivery(which had more careful treatment back then). What is unusual is that the stamps have adhered so well for so long! In fact, the clarity of so many P.O. cancellations is itself a phenomenon considering they were placed on the coarser surface of the cards.



Very fine condition holiday leather PC(und/back) by the popular publisher W.S.Heal. Bow painted at factory bright red, eyes yellow.



Miniature leather PC- "I would come out to see you, but my clothes are on the bum". Cancelled from California, Mo. 7/8/07 to Catherine Henning, Tunkhannock Pa. 7/10/07.

CLASSIFIED ADS
FREE to members!
Supplies at meeting. Get organized! Postcard sleeves 100/\$1.25 lg. size 50/75¢; 3-ring pgs 6/\$1.100/\$1.5; dividers 6/\$1.10. Jim Ward 6264660
Oh, yes! 472 more PCs added to my 37 albums!

THE CARD STAFF
Artist James Rudisill. Proofreader, Indexer, Now and Then Columnist, Info. Contributor and Mentor Charles Griffiths. Editor (the buck stops here) Jim Ward. P.O. Box 300, Lititz, PA 17543-0300 for all correspondence.

W.S.Heal monogram upper rt. corner. Unused, und/back. Green, red paint added to attire.



The collection had one PC by Yucca, Wood and Leather Co., L.A., with silk applique on its butterfly and flower. Four others by Zim were all hand colored. M.A.Kraus used Foxy Grandpa, Happy Hooligan and Buster Brown on several cards while six by the W.S.Heal Co. N.Y. featured caricatures by F.M.Howarth.

The quality of the artwork and printing on leather postcards varies as much as it does on non-leathers. Considering the medium it's truly amazing that even a small number can be considered 'very nice'.

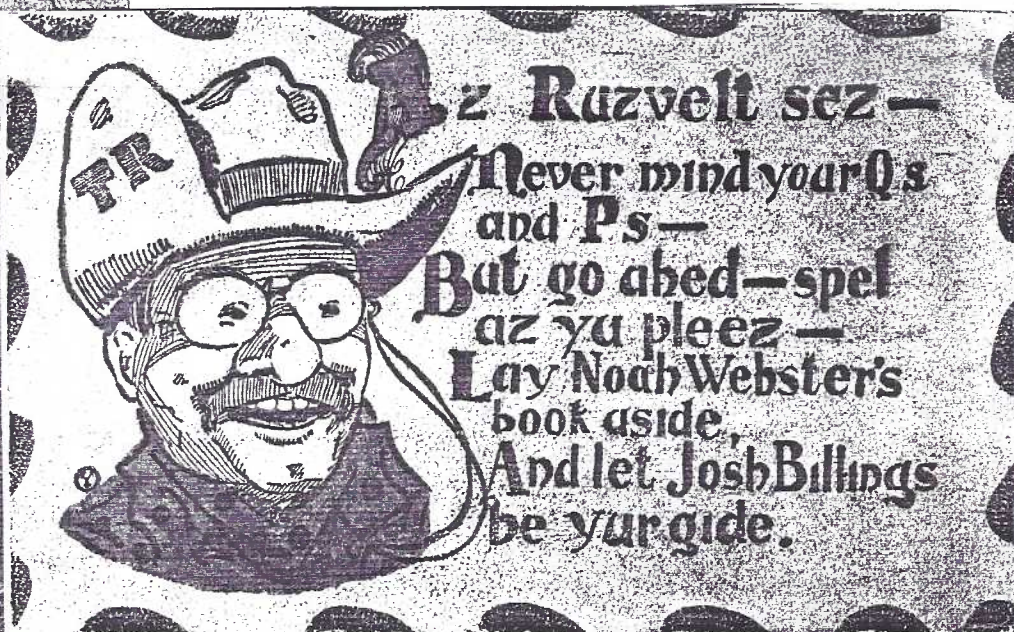
But if you wish a little variety in your life, why not a few leathers? This time look at them with a sympathetic eye.

And don't forget, the corners on leathers won't bend if you drop them!



Reproduction of CSA 25¢ note - Mississippi Central Railroad Co. at Holly Springs, 1862 on an unused divided back leather PC.

Embossed 'Abraham Lincoln 1809-1865' by Tanner Souvenir Co., NY. No. 120L (L=leather?)



TR's feud with Webster shows in this strong bias towards Billings' rustic maxims. JB was quite successful after he adopted the misspelling vogue about 1867. Unknown publisher (Circle Y). Und/back. Red added to scarf.



Parlor pillows were often covered with leather PCs - held together with lacing, ergo punched holes on the edges of many.



Wire attached leather address tag cancelled Mt. Pocono, Pa. 7/27/06. Leather heart with received cancel. Chester, Pa. 7/28/06. Cupid painted pink with blond hair and green sash

A preliminary survey of leather postcards examined May 21, 1992, C.W. Griffiths, J.F. Ward
 Key to column headings: PUBLISHER=identification found on card and where located-
 a=address side or v=view side ;12=Number of type seen in this collection. Notes (in addition to comic genre by all publishers).

PUBLISHER	a/v	AMT.	NOTES
Art Color Co., Phila.	a	1	college pennant
A.T.F.	a	1	
D.P. Crane	v	2	
C. First & Co., N.Y.	a	4	
M.M. Fowler, Chicago	v	8	
Frank Waters French	a	1	
Gartner & Bender, Chi.	a	6	
P.H. Harris, Buffalo	v	7	
W.S. Heal (or monogram)	v	91	also holidays (at least five different borders used)
HY. Sil. Mfg. Co., Boston	a	39	also holidays, views (incl. Lanc.) some subjects numbered
M.A. Kraus/circle K	v	32	also newspaper comic strip characters
F.H. Levy, N.Y.	a	1	
O. Loewenbach, Milwauk.	v	1	A. Lincoln
The Rose Co., Phila.	a	3	also holidays
O. Schawrz	v	2	
S & C(?)	v	4	
Souvenir PC Co. type colophon		(53)	
A.R.P.	v	11	also political
S.N. Co. (or monogram)	v	28	also holidays (one ea. of above "publ. by Phila. PC Co.")
no identification		14	
Tanner Souvenir, N.Y.	a	19	some embossed
Taylor Art Co., Phila.	a	1	
Maurice Wells	v	2	
Walter Wirths, N.Y.	a	2	
The Yucca, Wood & Leather ("postal card")	a	1	silk applique
H.G. Zim	v	4	
Zim	v	4	hand colored
(w/wo clover leaf)	a	24	
(circle "US Co"?)	a	5	incl. Phila. view
Geo. L. Garther(?) Chi.	a	3	
Pat. #740961	v	12	two diff. colophons appear to be copies of other publ.
Total of above postcards			333
Additional unidentified postcards			242
Total leather postcards examined			575

Comic character leather puzzle PC. by M.A. Krause (circle K over tail). Und/back. Paint added to boy's hair, clothing. "Souvenir Michigan City, Ind." added with rubber stamp.

Blue and red added to stars and stripes on divided back unknown publ. leather. Cancelled 3/10/08 Canton, Ohio. Mailed to Rose Waechter 1128 W. 27 St. City (Canton).

Buster Brown and his dog Tige



The lily of France may fade
 The Thistle & Shamrock wither
 The Oak of England may decay
 But the Stars shine on forever