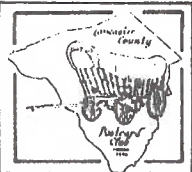


# The Card

PUBLISHED BY THE LANCASTER  
COUNTY POSTCARD CLUB, LANC. PA



MEETS 3rd MONDAY EA MONTH

Faith United  
Church of Christ  
1204 Wabank Street  
Lancaster, PA

May 1992  
Vol. 3 No. 5

## NEXT MEETING:

Monday 7 pm  
May 18, 1992  
Buy/sell 6 pm

## PROGRAM

Jere Greider thinks of himself as a collector's collector. And in addition to Mountville and DBL cards, Jere's main interest is Coca Cola=PCs with bottles, billboards, coolers, trucks, etc. As you might guess, when it is tough finding Coke, he expands to other soft drinks, not just paper items, but all sorts of Coke and soft drink advertising.

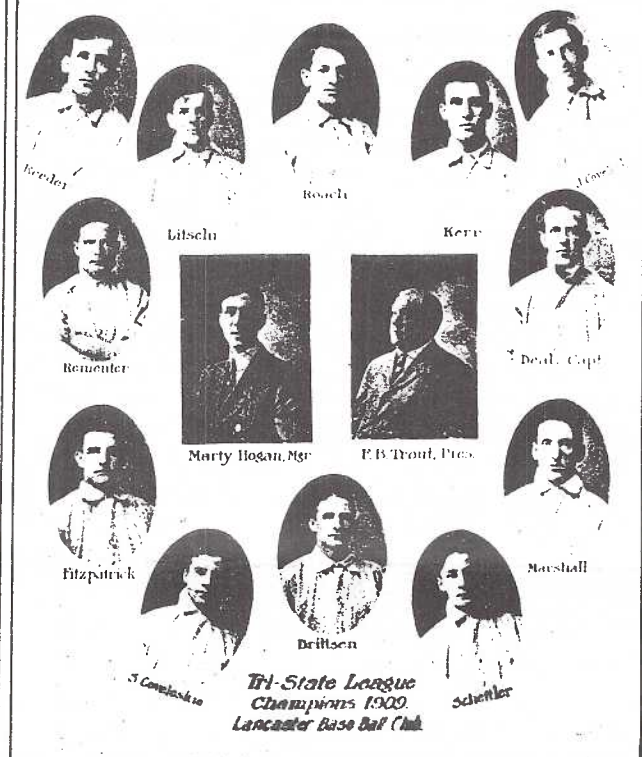
This personable Charter Member (#17) has been chairman of our 1991 and 1992 NPW displays. He did a superb job both years and you will get the same thorough performance when he makes a slide presentation on Coke Cards at the May meeting.

Expect an old fashion treat in great cards!



PC136 Prod. for Coca-Cola Co. ('91) "A Welcome Host to Workers" painting by H. Sundblom, 1950

## IT'S THE SEASON



Press of THE CONESTOGA PUBLISHING COMPANY, 37-39 N. Christian St., Lancaster, Pa.

Jack Deal appears as Captain (upper right side photo) of the Lancaster Base Ball Club when they were Tri-State League Champions in 1909. D/b black and white PC is from The Conestoga Publ. Co. press, 37-39 N. Christian St. (See more BB inside.)

## REVISED PROGRAM SCHEDULE

- May 18 - Coca Cola PCs J. Greider
  - June 15 - Millersville PCs H. Lines, D. Davis
  - July 20 - Auction
  - Aug. 22 - Picnic/Meeting Your Favorite PCs  
(NOTE=this is a Saturday)
  - Sept. 21 - Canals, Ferries, Trolleys C. Heim,  
P. Weidman
  - Oct. 19 - Auction
  - Nov. 16 - PRR PCs + Grif Teller W. Seigford
  - Dec. 21 - Christmas Party Pretzels J. Ward
- HEY, 1993 PROGRAM CHAIRMAN-LADY, SEE HOW EASY THIS IS. THEY'RE WAITING TO SERVE YOU! Talk about an energized Club!!

# AUCTION ACTION



Once again we had a terrific auction of members' cards. Our grateful thanks to these workers: **Walt Mowrer** (chrm.) numbering lots; **Charlie Griffiths** editing descriptions; **Jim Ward** typing and illust. list; **Darvin Rodgers** expert auctioneer; **Harold Moyer** and **Bud Heim** runners; **Barb Mowrer** and **Kev Noll** clerks and **Walt Mowrer** cashier.

If you will check bulletins from other PC clubs, you'll see LCPC is offering first class service for selling your PCs. Make it easy for your staff and you by complete descriptions, careful packaging, meeting deadlines and bringing your list to the auction. Sale #9 = July 20. Lots due June 15.

### PC CLUB EXCHANGES

We're exchanging THE CARD with many other PC clubs. To see what 'they' are doing, check the Exchange Notebook at our meeting. **Charlie Griffiths** is compiling a Rating List and we will continue on a regular basis with those that are 'meaty'.

APR. AUCTION - PRICES REALIZED (lot, price)				
1 .50	26 5	51 2	77 2	105 1
2 5	27 7	52 4	78 2.50	106 1
3 .25	28 8	53 .50	79 5	107 3
4 .75	29 8	54 3.50	80/81 2	108 1
5 8	30 .75	55 7.50	82 4	109 4.50
6 3	31 2	56 4	83 2	110 2.50
7 3	32 1	57 .75	84 6	111 3
8 10	33 1	58 3.50	85/86 1	112 .50
9 3	34 3.50	59 6	87 1	113 24
10 6	35 1	60 22	88/89 2.50	
11 2	36 .25	61 14	90 1	114 6
12 2	37 .75	62 14	91 .75	115 15
13 4	38 1.50	63 5	92 .75	116 15
14 3	39 .75	64 12	93 .75	117 1
15 1.50	40 10.50	65 10	94 3.50	118 .75
16 1.50	41 10	66 9	95 1	119 5
17 2.50	42 20	67 4	96 8.50	120 2
18 1	43 34	68 4	97 4	121 9
19 .75	44 10	69 3.50	98 5	122 8
20 4	45 7.50	70 20	99 3	123 4
21 1	46 8	71 25	100 .75	124 9
22 3.50	47 5.50	72 2.50	101 1	
23 4	48 4	73 .75	102 3	
24 6	49 14	74 1.50	103 3.50	
25 9	50 4	75/76 1	104 1	
Gross sale \$614.- \$6.(donated lots)=\$608.00				
LCPC Comm. \$60.80 (10%) + \$6 = \$66.80				

continued from page 1

### IT'S THE SEASON



*Friend Joe:*

*Am having a good time. J.C.W.A.M. is a big success. The best cigar in this town is the "Jack Deal."*

*Yours,  
Harry.*

### "Jack Deal" Cigar

MADE BY C. K. HENGST

24 East Chestnut Street

Opposite Penn'a Depot.

John W. Deal managed a pool and billiards hall at 33 N. Queen St. in 1919 and through the mid 1930's. The Junior Order of United American Mechanics met at 55 N. Queen St. In 1919 Curvin Hengst was a bookkeeper for the Raymond Heiland Tobacco Co., 247 College Ave. In 1923 he kept books for the Lewis Cigar Mfg. Co., 39 E. Chestnut St., of which R. Heiland was manager.

This unidentified d/b PC resembles an early type published by D.B. Landis/Landis Art Press, 38 E. Chestnut St. It could possibly be more recent than our Jack Deal PC on page 1, but shows Deal while still a star player.

continued next page





L. B. Herr Print The Lancaster Tri-State Base Ball Team. "RED ROSES"

No local baseball PCs are common, but this L.B.Herr b/w,un/b,1906,is the least scarce.

### IT'S THE SEASON



ANCASTER BASE BALL TEAM

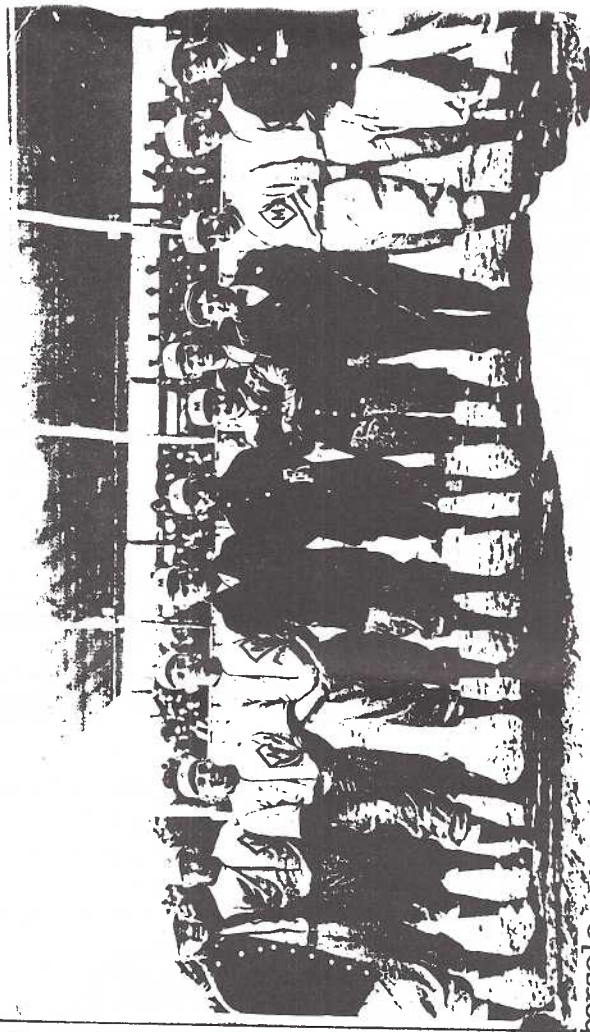
Some 1907 team members appear on the '06, and '09 PCs. B/w,un/b by Conestoga Publ.Co.



ELIZABETHTOWN BASE BALL CLUB, CHAMPIONS INTER-COUNTY LEAGUE, 1906

Players reading from left to right standing-Balmer, Bishop, Mgr. Ebersole Hutton, Rutt, Beamsderfer, Schock; sitting-McQuate, Wormley, Taylor, Miller, Blough, Hartwick and Steiner. B/w,un/b by Chronicle Print, Elizabethtown.

Players reading from left to right standing-Balmer, Bishop, Mgr. Ebersole Hutton, Rutt, Beamsderfer, Schock; sitting-McQuate, Wormley, Taylor, Miller, Blough, Hartwick and Steiner. B/w,un/b by Chronicle Print, Elizabethtown.



RP PC by W.E.Worrell, Mountville (Cyko stamp box) but is it the Mountville team? Year?



Because of other commitments, Park City Mall extended LCPC free use of exhibit space on April 18, so we celebrated an early NATIONAL POSTCARD WEEK (May 3-9, 1992).

**THIRTY-EIGHT DIFFERENT EXHIBIT BOARDS** highlighted our display. Participating were: Earl Carver, Mary Darrenkamp, Don Davis, Elizabeth Graver, Charlie Griffiths, Barb and Bud Heim, Ruth and Harold Moyer, Bill Seigford, Jim Ward and Norm Zimmerman. Tom Beck brought two double exhibits he had made and used at Stevens Tech Sch. for the 200th Anniversary Celebration of Thaddeus Stevens' Birth. (Ask Tom about the NEW Stevens PC available in limited quantity).

Albums For Looking were also there from Earl Carver, Mary Darrenkamp, Paul Weidman and Norm Zimmerman.

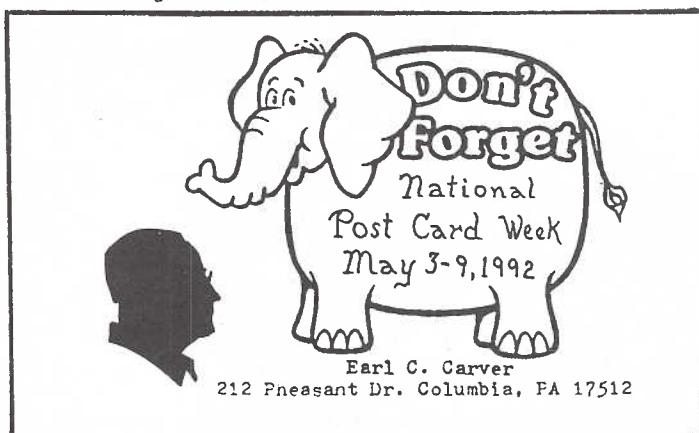
#### THANKS ALSO GO TO

Don Davis for up-dating the LCPC sign; Bud Heim for making "A frame" easels (from Metropolitan PC Club's donations); Rosemary Litz for the cake devoured by the workers. Chrm. Jere Greider for toting the tables; The Mountville Methodist Ch. for use of the tables and chairs, and, of course Park City.

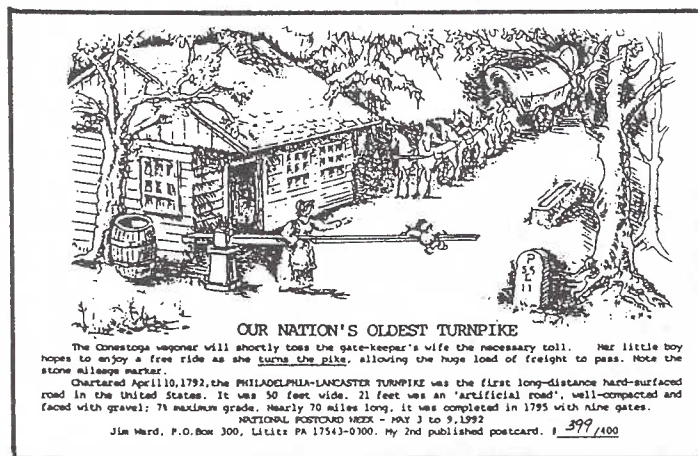
And certainly these members who manned the booth, explaining our Club's purpose, our Library and the Exhibit Boards; selling our Covered Bridge PCs, NPW PCs and the calendars; setting up and breaking down the stand: - Earl Carver, Don Davis, Dorathy and Harold Fry, Jere Greider, Bud Heim, Walt Mowrer, Harold and Ruth Moyer, Russ Mull, Bill Seigford, Jim Ward, Paul Weidman and Norm Zimmerman. (Ed.'s apology if you were missed).

#### MEMBER NPW CARDS

Earl Carver's second NPW card is shown here. Silhouette by member #66 Jim Rudisill. Very, very limited edition. Earl trades. It is on glorious elephantine yellow.

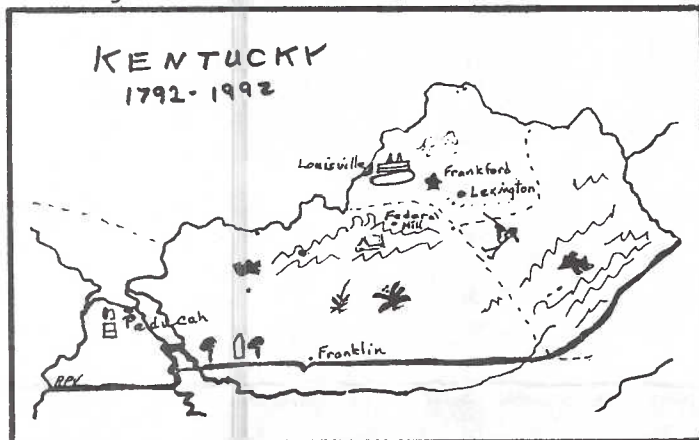


Jim Ward's card is also his second NPW. Limited to 400; art by Jim Rudisill. Jim will trade or sell for 25¢, 5/\$1 plus SASE. It typifies the early tollgate and turned pike (which gave these roads their name).



Anne Valsing's NPW card appears to be her third. Hand-colored, the reverse Ode To Kentucky reads, "Land of rivers...where hunters and settlers came and passed...where people and horses are 'bred in the bone' and the cardinal sings in the dogwood".

Kentucky was her first home. She has shown personally familiar places. Anne exchanges NPW cards.



Anne's '92b 'family edition' NPW features a quilt.

#### LCPC OFFICERS

President Dorathy Fry 733-8918 V-P Don Davis 872-8630 Secy. Barb Mowrer 684-5331  
Treas. Harry Lines 569-2080 Directors: Jere Greider, Charles Griffiths, Gerald Hostetter, Bob Kramer, Walt Mowrer, Paul Weidman. Editor Jim Ward 626-4660. Club Correspondence to: P.O. Box 300, LITITZ PA 17543-0300.  
ANNUAL DUES \$7 per person, \$10 per family.

Newly appointed: WILLARD BUCKWALTER as Club Librarian. 33 POSTCARD books at each meeting.

## NEW MEMBERS

- Welcome to our most distant member -
- #183 **DOROTHY JONES** 1919 Citron St., #305, Honolulu, Hawaii 96826. Collects area maps, recipes, comics, Indians, lg. letters, historical monuments, Garfield and more. She'd like to hear from you... may-be have our Christmas Party there????
- #184 **JOANNE M. STECZ** 708 East End Av., Lanc. 17602-3714. 299-3909. Millersville University (was MSTC); places she travelled
- #185 **RON HOHENWARTER** 337 W. Walnut St., Lanc. 17603. 394-2192. Lanc. City, County. All local advertising media.
- #186 **HAROLD K. HECKMAN** Sportsman Rd., Wernersville, Pa. 19565. 215-678-3411, ext. 220. Hospitals, sports, European capitals.
- #187 **ETHEL A. ZIMMERMAN** 102 Ashlea Gardens, New Holland, Pa., 17557. 354-5112. (Norm's wife) Valentines; cards of all occasions dolls of all seasons
- #188 **KEN HONTZ** 223 Pleasant Hill Dr., Lititz Pa. 17543. 626-6427. General.
- #189 **KARYN HONTZ** Same as Ken. Collects all postcards. WOW!
- #190 **HELEN PHILLOON** 1220 Hillcrest Rd., Lanc. Pa., 17603. 392-5225. Scenic, historic PCs (Several of these welcomed members we met at our NPW exhibit stand in Park City Mall)

**NOTE -** A number of people wonder how many members we have at present....164!

We organized Jan. 1990 with 21 members. By Dec. '90 we had 111. Six did not renew (we retained 94%). In Dec. '91 we had 172 members. 18 did not renew and two were deceased. We retain 88½% and have added eighteen more members since Jan. 1992. #190 (-26) = 164.

## FUTURE SHOWS



### TOWSON POSTCARD AND PAPER SHOW

Postcards, Covers, Cinderellas,  
Advertising, Scrap, Supplies,  
Sheet Music, Books, Other Ephemera

**Saturday, May 9, 1992**

10 A.M. to 4 P.M.

Towson, Maryland

On York road at Baltimore Beltway (I-695) exit 26A. Next to Howard Johnson's in the Dulaney Room of the Quality Inn.

Pa. Ad.

MAY 15-16 - Ye Olde York Bourse. York Mall. York, PA. 10-9 ea. day. NO ADM. CHG.

MAY 29-30 - Postcard Society, Inc. Howard Johnson Hotel. Hagerstown, MD. 9-6, 9-3. NO ADM.

JUNE 7 - Susquehanna Valley PC Club. Days Inn. Shamokin Dam, PA. 9-4. ADM. \$1.

JUNE 19-20 - Postcard Society, Inc. Geo. Washington Motor Lodge. King of Prussia, PA. 9-6, 9-3. ADM. \$2



## EXHIBITS



**APRIL SHOWERS** brought a wide variety of cards to the April meeting. Thanks to these folks for their board displays.

**JIM WARD** FIRST April Showers Bring Spring Flowers

**HAROLD MOYER** SECOND It Makes Down

**DON DAVIS** An April Shower Brings Floods  
HONORABLE MENTIONS

**BOB KRAMER** Too Many Showers Cause Floods

**ANNE STEINBERG** April Showers

Chairlady **Barb Heim** announced future SUBJECTS for EXHIBIT BOARD COMPETITION as:

May - FLOWERS

June - DAIRY MONTH

July - BOATS

Aug. - none (picnic)

Sep. - FIRE TRUCKS

Oct. - BIRTHDAYS

Nov. - DISASTERS Dec. - CHILDREN AT CHRISTMAS

NOW - let's go to it, folks! Lots of time to hunt, measure, letter and mount those PCs.

And plenty of LATITUDE to include ALL ERAS.

Beginners: 22x28"bd. (vertical) title at top.

**Jim Nuss** (Park Bd. Chrm.) announced that LCPC may have a table in the Park to show LITITZ PCs at the 175th ANNIVERSARY of the TOWN'S 4th of JULY CELEBRATION. More details later.

### THE CARD STAFF

Editor **Jim Ward** Columnist **Charles Griffiths**

Artist **Jim Rudisill**

Correspondence to:

P.O. Box 300, Lititz, PA 17543-0300.

Indexes available to THE LCPC NEWSLETTER first two yrs. (1990, 1991) 50¢ plus SASE.

Complete yrs. (1990-91) \$5 ea. incl. indexes.

### BEGINNER'S BLACKBOARD - "AS IS"

Honest postcard dealers price cards on the reverse and if there is minor damage, add the words "AS IS". Experienced collectors examine these cards more carefully.

In fact, AS IS means caveat emptor (BUYER BEWARE). It is a dealer's reminder/warning.

Even a seasoned collector can get caught up in the excitement of a purchase, especially at a busy stand or show. He sees and accepts a minor corner 'bump' but doesn't see an edge tear - until reaching home.

Some dealers will accept such a returned PC as credit from a known customer, but they are not obliged to. They have done their job - the collector hasn't done his!

WASH THIS SLATE WITH A WET RAG

Make sure Supplement to Herald's Boston American



# NATION'S OLDEST WATCHMAKING SCHOOL CLOSES

## Time Runs Out For City Landmark

Only two issues ago we wrote the final story of a Lancaster institution, the WATT & SHAND STORE. And now another local landmark, one with national recognition and a 115 year history, closes its doors.

Since 1914 the familiar Bowman Bldg..at N.Duke and E.Chestnut Sts. has given us correct time by its corner clock. The present owner, Mrs. Melanie Parkhurst, promises to continue this voluntary service. The store she and her late husband bought from the Bowman family in 1964 (upon the death of Chas. Bowman) will become her personal clock museum on May 30,1992.

The BOWMAN TECHNICAL SCHOOL (also purchased by the Parkhursts) was housed on the second floor from 1914 to 1978. It graduated its last student April 12.

But the story of BOWMAN'S begins with Ezra F. Bowman,a fifth generation Swiss Mennonite, who learned his trade from H.Z. Rhoads of Lancaster. H.M.J.Klein says "Ezra was one of those mechanical geniuses who must put together and take apart complicated mechanisms,and so under a Swiss, who was also a designer and a watch-maker, in the

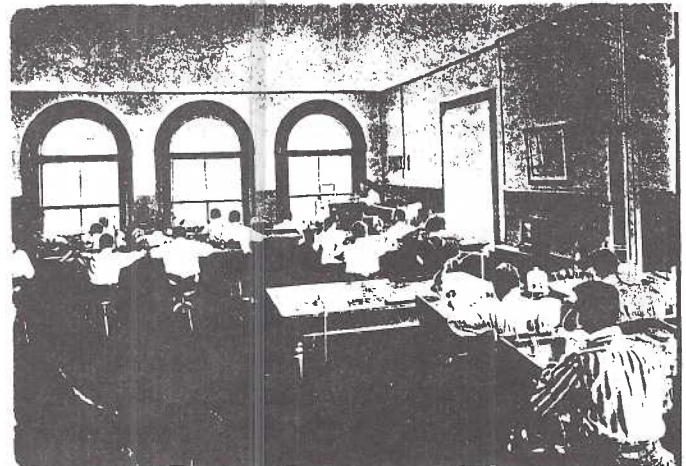
strictest sense of the word,he became a master watch-maker".

Ezra actually became a tuition pupil in 1873 at the age of 26,was journeyman watch-maker with Rhoads in 1875 and in 1876 joined the Lancaster Watch Co. (predecessor to Hamilton Watch).

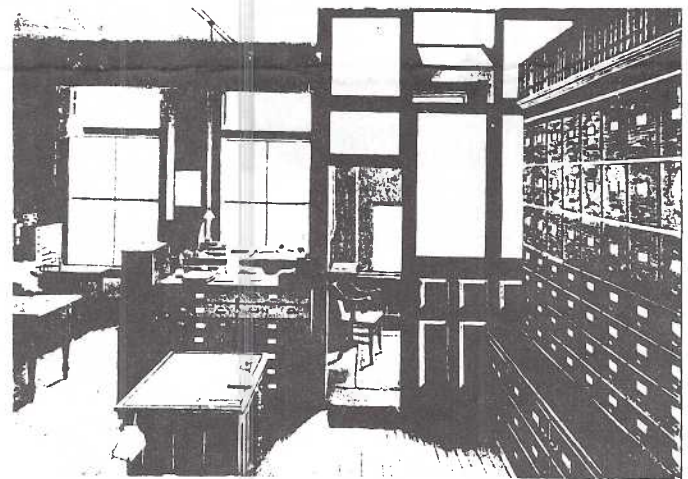
Bowman began manufacturing watches in 1879. "He was determined to prove that a watch equally as good as any imported from Switzerland could be made in this country." The National Museum in Wash.,D.C. has such a watch manufactured by the Bowman factory between 1879 and 1883.

Devoting attention to fine detail proved unprofitable so in 1891 he organized the Non-Retailing Co., a wholesale jewelry firm.

But certainly Ezra F.Bowman's 'claim to fame' must be the BOWMAN TECHNICAL (HORO-LOGICAL) SCHOOL which he started in 1889.

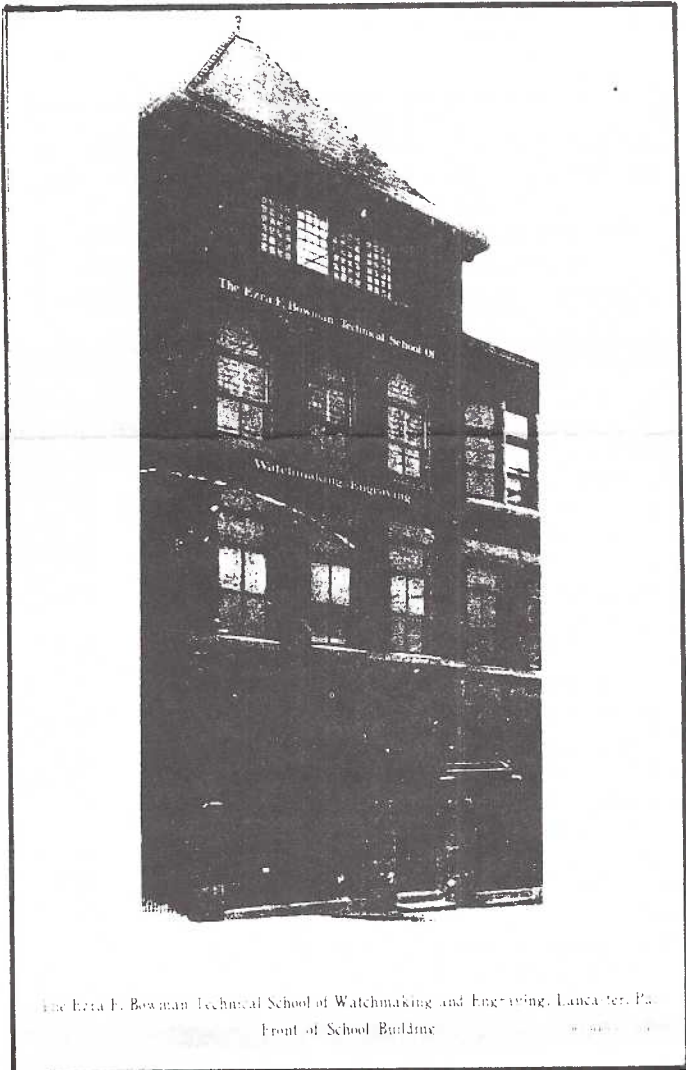


The Ezra F. Bowman Technical School of Watchmaking and Engraving, Lancaster, Pa. In the Watchwork Department



The Ezra F. Bowman Technical School of Watchmaking and Engraving, Lancaster, Pa. Office on Second Floor

We know of four b/w,d/b,unnumbered PCs(3 of which are shown) by L.B.Herr.These were the bldg. at 36 E.Chestnut St.:Exterior, Second Floor Office and Engraving Depts. and Third Flr. Watchmaking Dept.HAVE YOU SEEN OTHERS?



The Ezra F. Bowman Technical School of Watchmaking and Engraving, Lancaster, Pa. Front of School Building



## LANCASTER INSTITUTION IS HISTORY Corner Clock Keeps On Ticking

The Bowman School's knowledge and authority in its field has been recognized by manufacturers of watches and clocks around the world who have employed its services in helping to design new models, as well as testing and improving current models and timepieces.

Upon the death of Ezra in 1901, the business and school continued under the able partnership of two sons, John Jacob and Charles Ezra Bowman.

During War World I the War Dept. surveyed the entire U.S. and chose Bowman's to alter its course to fit men to enter either ordnance, aviation or engineering services which it did, using the Franklin and Marshall Academy campus.

Thousands of graduates from the School have their homes as far as Japan and Ghana. The proliferation of jewelry stores in Lancaster County is a direct result of Bowman graduates. The Bowman Technical School was the first private trade school registered in Pa. and the nation's oldest watchmaking school.

Let's hope the familiar 'corner clock' and the fine building remain. The building is registered with the Historic Preservation Trust as the oldest intact interior structure in the City.

Rich golden oak tones of the woodwork and display cases highlight the first floor. The second floor has served as a work shop in recent years while the open loft of the third floor was converted to Parkhurst's apartment in 1980.

Leading to the roof is a steep narrow staircase. On the southwest corner of the roof is a small observatory. From it the Bowman sons calculated exact time for their clocks, including the exterior 'corner clock' (which hasn't stopped since they wound it in 1914). And this speaks so well for a family that gave fine service to its community for 115 years.

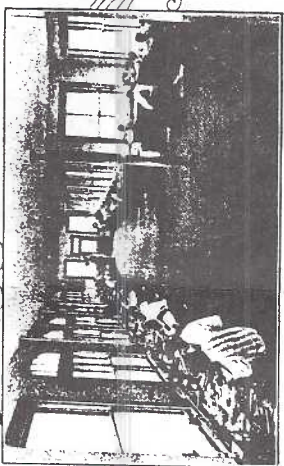
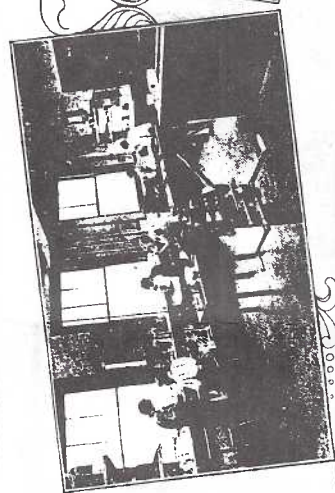
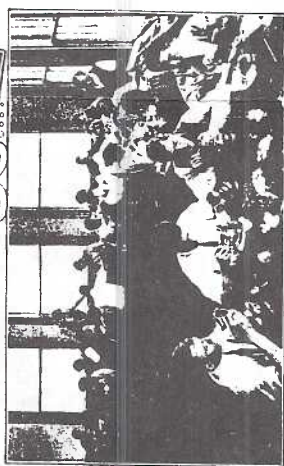
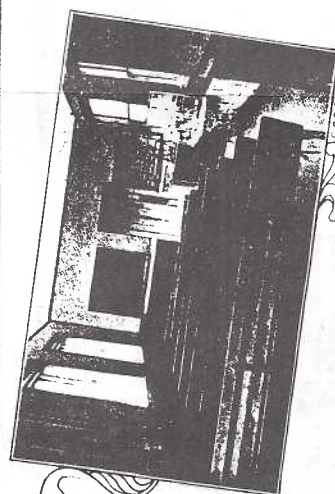
Also known are several real photo PCs, 1906 by Lanc. Photo Supply House and 1909(?). They show graduates and staff in front of 36 E.Chestnut St. school and a neighborhood church (the latter with 103 people!)

Still another real photo PC shows six basketball players and mgr. of the BTS team of 1909-10.

RP info. submitted by Howard Steinberg (#14)

concluded on next page

Bowman Technical School of  
Watchmaking and Engraving,  
Lancaster, Pa.



Valentine-Souvenir printed two issues for local publisher, I. Steinfeldt full color, d/b. ('I S' monogram is on rev.) #74-87 shows four interior views and #77-43 the exterior of the present Bowman 'corner building'. Roof-top observatory is seen but the corner clock was not yet in place

History buffs may locate these sites of early Bowman enterprises chosen from random Lancaster City directories:

- 1888 - 20 E.Chestnut St. Ezra F. Bowman  
Wholesale watches and clocks
- 1898 - 12 E.Chestnut St. Ezra F. Bowman \*  
Watches, clocks and chains
- 1909 - 36 E.Chestnut St. Ezra F. Bowman's  
Sons \* Watches, clocks and jewelry
- 1914 - 147-149 N.Duke St. Ezra F. Bowman's  
Sons \* Watches, clocks, jewelry mfrs.,  
engravers and repairers

\* Bowman Technical School on top floors  
1978 - 220 W.King St. Bowman Tech.School

All of the locations prior to the Bowman 'corner store' at N. Duke and E. Chestnut Sts. are gone. (See postcard views.)



May 1992 pg. 8

From the 1909 Lanc. Board of Trade Journal--  
"Jewelers in every part of the world use the tools made and marketed by the **Bowman** firm, whose name is a house-hold word among the craft everywhere. This house is one of the foremost in maintaining connections between Lancaster and the wide outside world. The high reputation of their product wherever it goes reflects credit on our city as well as on the firm which produces it."

The **Bowman** 'Corner Clocks' →



## MAY - A MONTH OF REMEMBRANCE

*Mother's Day, Sunday, May 8, 1910*

*Central Baptist Sunday School*

**MOTHER**  
BY M.T. SHEAHAN.

The dearest, truest,  
fondest name  
All the world gives her  
that fame.

She it was that  
gave you birth  
From her life you  
took your worth.

Mind and body  
both she gave  
That her "baby"  
she might save.

Stop and look  
upon her now  
See the time marks  
on her brow.

See the love light  
in her eyes  
Mother love that  
never dies.

Put around her  
your strong arm  
And protect her  
from all harm.

Tell her what she  
longs to hear  
I will always love you dear.

*Woodbury, N. J.*

Edward Drew, Pastor. C. A. Brown, Supt.

A 'Good Motto' PC published by M.T. Sheahan, Boston, #A553. Pretty pink and blue blossoms.



International Art Publ. Co. Unnumbered series featuring Ellen H. Clapsaddle art.

A VERY HAPPY BIRTHDAY to MAINE Member #100!

Sixty (60) members were present at our Apr. meeting and enjoyed the 124 lot auction..

### INTERNATIONAL NEWSPAPER SHOWS POSTCARDS

Full color linens of Ebbets Field (Brooklyn) the N.Y. Polo Grounds and Boston's Fenway Park were featured in the Christian Science Monitor (Apr. 9). (From D. Fry, star reporter)

### MEMBERSHIP ROSTER CHANGES DUE NOW

If your postcard collecting interests have changed; if your address, incl. ZIP, or phone has changed. NOTIFY EDITOR ON OR BEFORE MAY 18th MEETING. FINAL NOTICE.