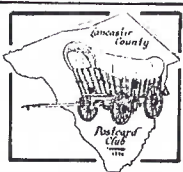


The Card

PUBLISHED BY THE LANCASTER
COUNTY POSTCARD CLUB, LANC. PA



MEETS 3rd MONDAY EACH MONTH
Lions Building
190 N. Charlotte St.
Millersville, PA

February 1992
Vol. 3 No. 2
NEXT MEETING:
Monday 7:00 pm
February 17, 1992
Buy/sell 6 pm

PROGRAM

February's program will be **SHOW N' TELL** and members are to bring a postcard and a brief story about it.

Somewhere in your collection you must have a PC that has a special meaning or a story to tell. Now is your chance to share it with the rest of us. I already have mine.

Tell us where you found it, why you kept it and the history behind it. You will have 3 to 5 mins. to relate your story so we can get to everyone.

Meanwhile, my call for help with programs for this year has been underwhelming. Several members are hesitant to speak to a group. I suggested they might have a print-out to distribute. This would eliminate some of the dialogue. Think about it. Only a few of us are authorities on PCs (I'm not included) so you're among friends. If you wish to volunteer, my phone is 872-8630 or see me at the next meeting.

Don Davis, Program Chairman



EXHIBITS



Wintertime brought pretty posters from these members:

WALT MOWRER FIRST-Winter on the Susquehanna

JIM WARD SECOND - Chimney Sweeps

HAROLD MOYER THIRD - Wintertime

Honorable Mentions

EARL CARVER - Winter at Niagara

PAULINE CURTIS - Fun for All

ANNE STEINBERG - Winter Fun

Thanks, folks, for more funtime! Barb Heim announced February's Exhibit Theme will be **ABE LINCOLN** and/or **GEO. WASHINGTON** - since we meet on Presidents Day.

Cash awards of \$3, \$2 and \$1 will be awarded along with our LCPC Exhibit Award Postcards at February's meeting.

GROUND HOG DAY

*Come out and make
a Shadow.*



*That's some shadow-
believe me, I'll stay out a while.*

Henderson Lithographing Co. of Cincinnati, OH. issued a set of four GROUNDHOG DAY postcards (Comic Series 101). It is scarce. Why doesn't Quarryville Lodge issue theirs?

MEMBER IN THE NEWS

Robt. Vaux Roop (#23) has created and donated a matted and framed collage "Fortunate Are We To Live In God's Country". Receipts from the \$1 per ticket raffle will support Quarryville's 15-month BiCentennial events. Ph 786-1511, 786-2844

THANK YOU



Dorathy and Harold Fry were the kind donors of the Second Anniversary cake in January. (Utensils compliments of their 50th Wedding Anniversary!) Congrats, folks, and **Thanks!**

Bill Seigford has donated a video tape on POSTCARDS to the Library. A review will be given by Don Davis in February. Alma Althouse's husband expressed his gratitude by presenting our new President with a gavel. She'll use it for Directors meetings. Bud H's is for regular meetings.

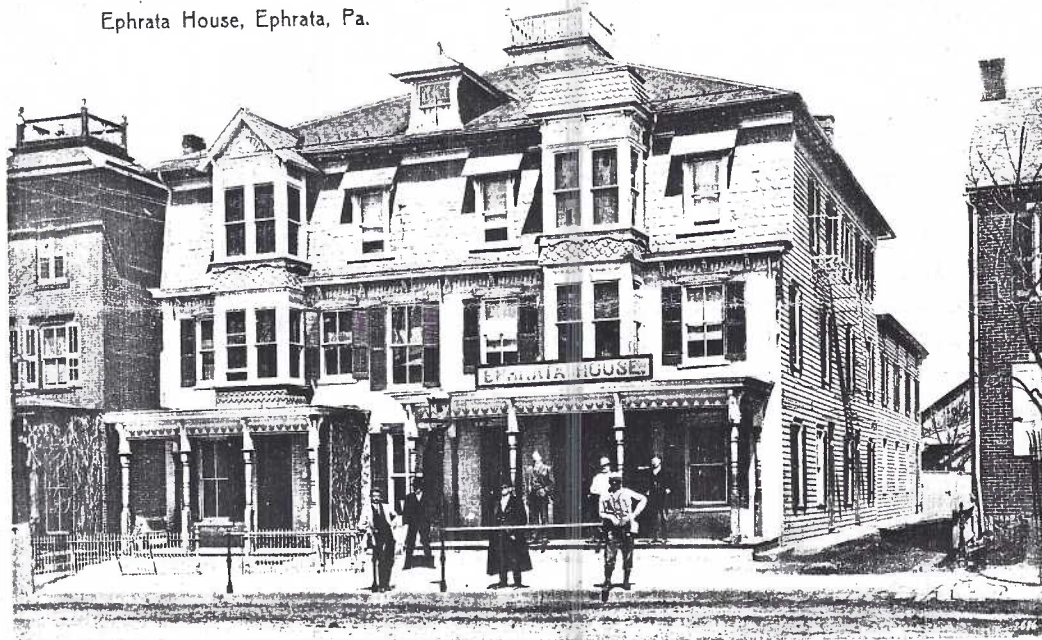
POSTCARD CHECKLIST - VON NIEDA & BRUN STUDIO

Certainly there were more prolific publishers of local postcards than Von Nieda & Brun. But were there any who produced better quality cards? These surely equalled the best Rotograph and Watt & Shand PC quality. There still remain 'gaps' in the listing of this Ephrata-based publisher.

Directories show various Von Nieda's as a photographer, an editor, a supervisor of CTC and a proprietor of the Ephrata Mountain Spring Resort. But who was Brun?

Please check your Lancaster City and County PCs and let us know what you can add in missing #'s as well as local data.

Ephrata House, Ephrata, Pa.



#127. Located at #46-48 East Main St., building now borders Ephrata Natl. Bank drive

Conestoga Building, Lancaster, Pa.



#123. Electric generators for CTC could be seen through windows on E. Orange St., Lanc.

Printed by Paul C. Koeber (PCK with peacock)
Number, Von Nieda & Brun, Ephrata and "Printed in Germany" along reverse edge:

H= horizontal postcard format; V=vertical

11612 H Ephrata, Pa. Main Street

11614 H Ephrata, Pa. The Square

11615 V Locust Street, Columbia

11616 H Rural Scene, Lancaster County (creek)

11618 H Ephrata The Fish Pond & Dam, Clare Point Stock Farm

11619 H Cows Grazing, Lancaster County (hill)

11621 V Lititz Dixon Chapel, Linden Hall Sem

11622 V Lititz Lititz Springs (stream)

11623 V Lititz Lititz Springs (spring)

11624 H Lititz Linden Hall, Church Square

11625 H Lititz Main Bldg., Linden Hall Sem.

Unknown printer On reverse: "Publ. by Von Nieda & Brun, Ephrata, Pa., No. () Made in Ger.

101 H Buffet, Elks Home (Lanc.)

102 V Hall Way, Elks Home (Lanc.)

104 H Elks Home (Lanc.)

116 V Trinity Lutheran Church, Ephrata

121 H Pott's Department Store, Ephrata

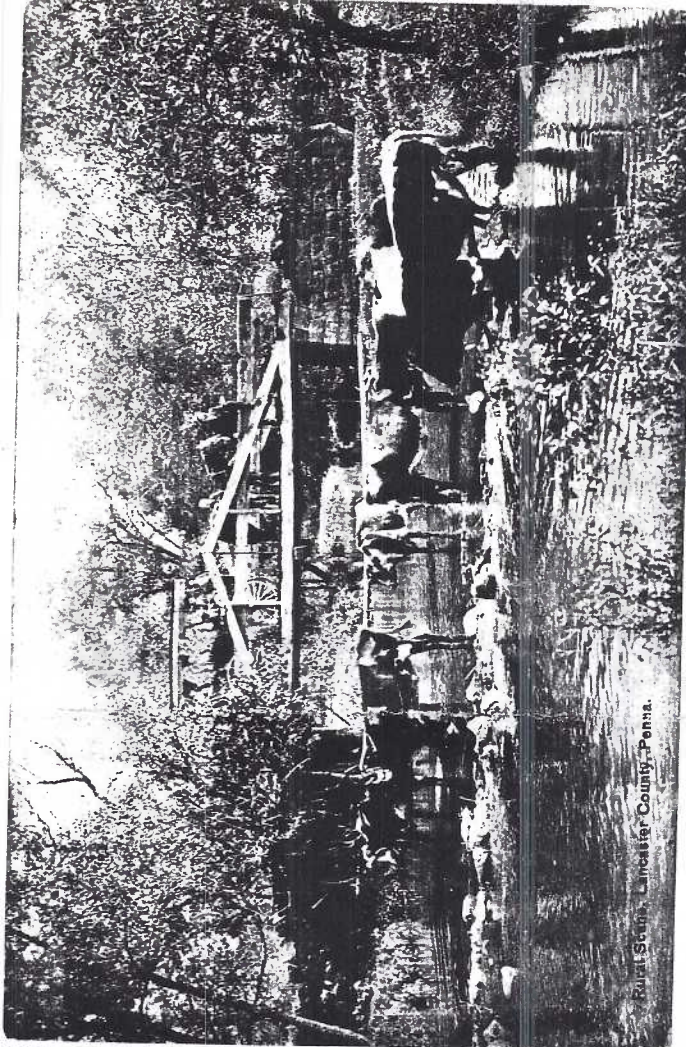
122 H Be Up-to-date. Use the Trolley Express
Conestoga Traction Co.

123 V Conestoga Building (Lanc.)

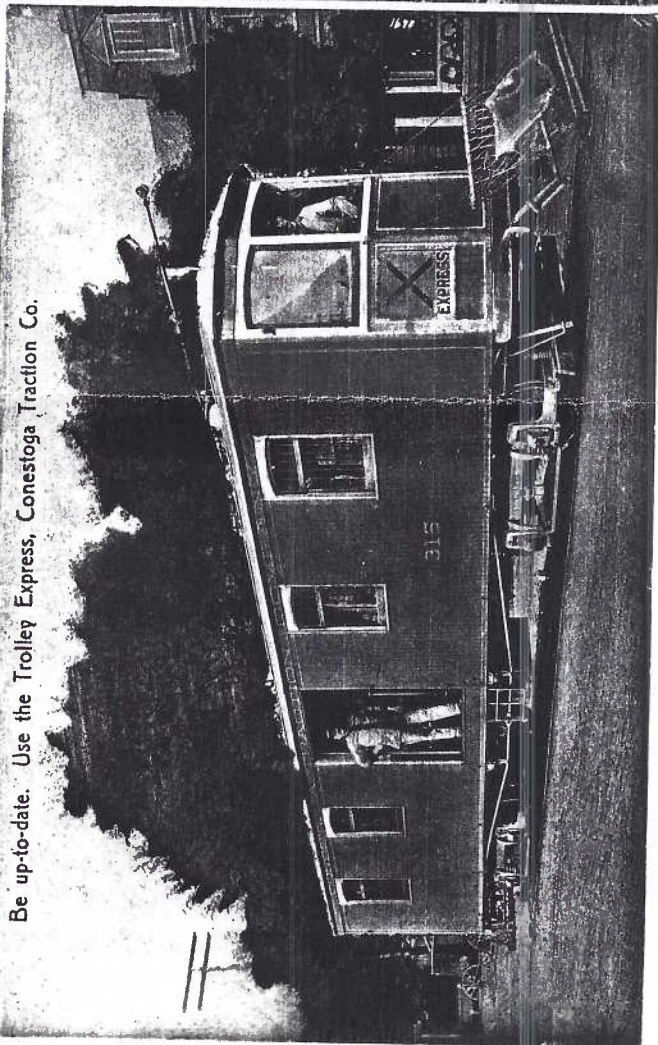
124 H Gas and Electric Display Room (Lanc.)

127 H Ephrata House, Ephrata

Postcards in full color from the above list are: #101, 102, 104 (is there a 103 Elks Home?) and #122, 123, 124 (all CTC related) plus #121.



#11616. Ephrata cows? Bridge could be a clue.
THE CARD hopes to produce checklists of other local PC publishers. If you have ideas and above all, additions or corrections, please let us know so we can share them.



#122. Big express trolley picked up milk at rural stops for delivery to Lanc. creamery. Same scene publ. by Express Printing, Lititz with and without POST CARD on back.

1992 OFFICERS

Pres. **Dorathy Fry** 733-8918 (with an a)
 V-Pres. **Donald Davis** 872-8630
 Secy. **Barbara Mowrer** 684-5331
 Treas. **Harry Lines** 569-2080

1992 DIRECTORS

1992-93 **Gerald Hostetter** 653-4505
Robert Kramer 684-4210
Paul Weidman 898-7313
 1991-92 **Jere Greider** 285-5872
Walter Mowrer 684-5331
Charles Griffiths* 872-5043
 *appointed to fill unexpired term of Jerry Kotek

COMMITTEE CHAIRPERSONS

Auditing **Gerald Hostetter, W.B. Heisey**
 Publicity **Lorraine Singer** 626-5558
 Membership **Sally Danz** 397-4602
 Exhibits **Barbara Heim** 684-6533
 Library
 Greeter **Margaret 'Peg' Hanna** 626-4660
 Budget-Finance **H. Lines, Weidman, Davis**
 Programs **Don Davis**
 Photography **Earl Carver** 684-3069
 LCPC Postcards **Rosemary Litz** 569-2543
 50/50 **Ruth Lines** 569-2080
 Auction **W. Mowrer, Griffiths, Ward**
 Natl. PC Week **Greider, Kramer, Weidman**
 Trips **Nevin Myer** 859-1508
 Property
 Study Groups **Charles Griffiths**
 The Card **Jim Ward** 626-4660 **Griffiths**

NEW MEMBERS

- #176 **GEORGIA NUSS** 230 N. Clay Rd., Lititz, PA 17543. 733-9506. Collects animals and varied other subjects
 #177 **EDNA B. BELL** 107 Avenue A, Rochester, NY 14621. 716-546-4814. Circus personalities; Churchill, many others. Write to her.

POSTCARD NEEDED FOR NEW HOLIDAY!

The time taken for the Earth to complete its orbit around the Sun is 365.242 days or approximately 365.25 days.

So 1989, 1990 and 1991 each had an extra $\frac{1}{4}$ day which they've kindly handed over to 1992 whose own $\frac{1}{4}$ day gives us four $\frac{1}{4}$'s, ergo Feb. 29 and **Leap Year!**

Some people born on Feb. 29 will be only 10 years old but look and feel like 40!

The difference between 365.242 and 365.25 will be an extra-extra day. It is added to each century year divisible by 400! So plan ahead for the year 2000 and the **EXTRA-EXTRA HOLIDAY - and a unique POSTCARD!**

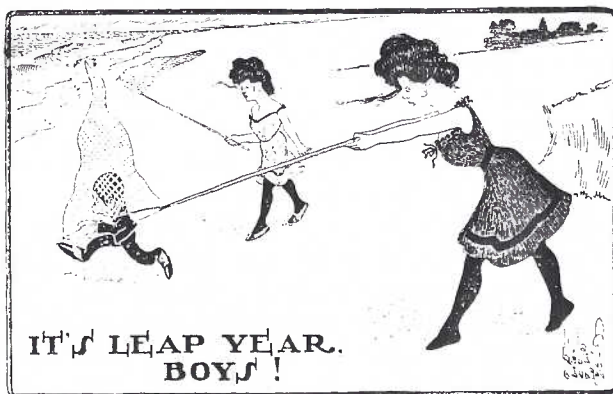
Of course if you're a workaholic, you may wish to collect over-over time by not taking the holiday. But make a PC anyhow.

LEAP YEAR POSTCARDS

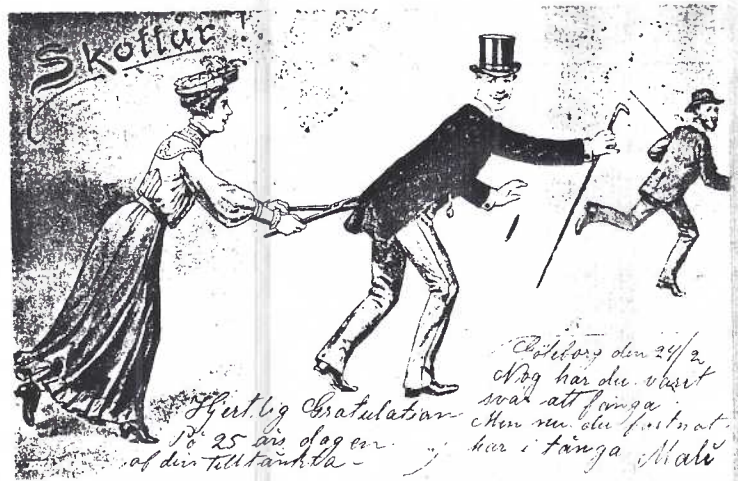
Our apologies to those members who expected romantic lovers, cute cupids, and vinegar Valentines in this month's CARD, but this is a Leap Year and the staff just couldn't resist these...so laugh on.



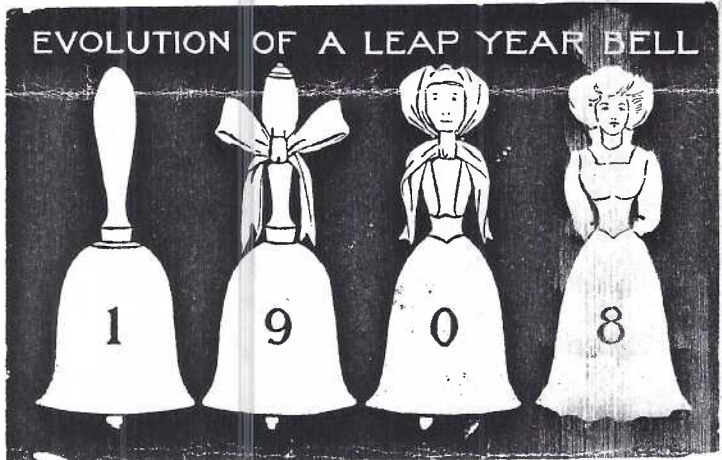
A very collectible card, this Illus. PC Co. edition serves well in several topical categories: blacks, children, lovers and Leap Year. Copyright 1908.



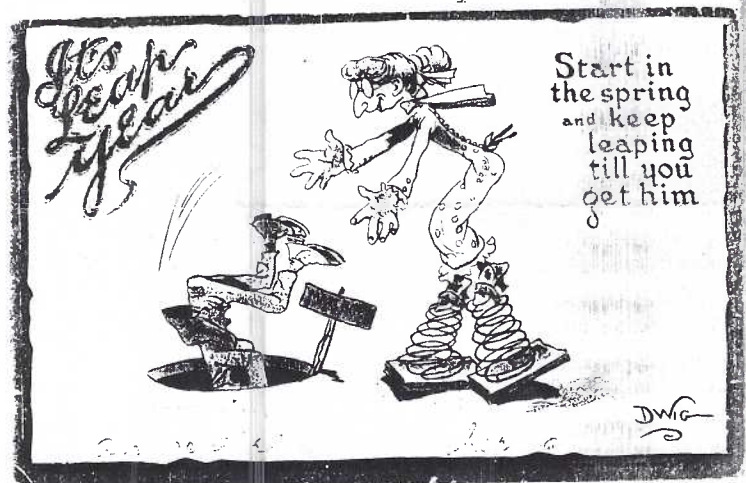
Leap Year would be incomplete without a Walter Wellman card. (Artist & publisher.) Message: "I expect this is a good picture of Uncle Elmer. Tell him that."



"Skottar" is Leap Year in Swedish. This 1904 (Feb.24) is much scarcer than 1908 PCs.



This neat 'Evolution' PC is in stark black and white by an unknown publisher. The stamp box has British postage rates. Adv. on back is for 'Dime Savings Bldg. Assoc. at 221 N. 12th St.' (sounds very American).



Leap Year series #401 by Sam Gabriel is sent to Herman Smith in Sunbury, PA. "From your grandmother.....Herman, this is you and your girl. Ain't she nice? Now you must run. Good Bye. Write soon. Come down." Did Herman appreciate Dwig's art as much?

Besides the artists mentioned with the cards shown, you can expect to find these talents, also: Bishop, Geo. Brill, Arthur Gill, Lance Thackeray, and Bernhardt Wall.



Here I've been standin' for five hours and not a gal has asked me to marry her yet!

Paul C. Koeber (PCK on a peacock) engaged the talents of August Hutaft on signed and unsigned cards. These captions would seem to be opposite the majority of sentiments. Sent to Wm. Hall in Upland, PA. "Better days coming. Never give up." Unsigned.

I'm safe for another four years!



Only one of two After Leap Year PCs in a collection of 56. Winsch-type back.

Additional Leap Year postcard publishers are Auburn Co., S. Bergman, Charles Rose, Taylor-Platt and Raphael Tuck Co. Certainly not sentimental, Leap Years can be a 'fun collection', and with pre-set boundaries!

In addition to the messages listed with postcards illustrated, these are others sent to Misses:

"Too bad, but cheer up, perhaps it won't be as bad as it seems" (men running from lady)
 "There is your chance" (lady sees scarecrow)
 "Did you ever get left, ho, ho" (old maid)
 "Nettie, don't be insulted at this card for this is the best I can do" (coaxing ladies)
 "Please don't stretch a rope across the swim" (lady on pier/man in the water (swim))
 "I will go if you pay half the fare. Answer at once" (lady urges bum to go fly with her)
 "Compliments of the season"
 (Only one of the seven above was signed.)

These were sent to men:

"Dear Cousin, you see the man in the picture so look out for yourself" (lady grabs thief)
 "This way you shall make it" (man in tree)
 "From C-K-C" (lady: 'Can you take a hint?')
 "Hello Honey, received your postal and I am sorry that my leaving you made you look like that picture (man dives off pier). Your honey girl will come back someday, ha, ha."
 (First and last of these four were signed.)



On The Trail by Nash was towards the end of the 'big PC era', 1912 and 1904 being scarcer than 1908. Cancelled: Lititz, Jan. 24

AN UNUSUAL POSTCARD

Some animal lovers won't appreciate this PC and so we won't torment them with the four kit foxes frolics in the den near their mother on the opposite side.

Titled **A Promising Litter** it is a painting in sepia tones by Barber.

New Holland House was at 153 East Main St.

Was this really the last fox chase in New Holland and was it an annual Ground Hog Day event? Let us know for a follow-up story.

THE
NOVELTY
POST
CARD

GILT EDGE
POST CARD

PUBLISHED BY M. T. SHEAHAN
297 CONGRESS ST. BOSTON.

PLACE STAMP
HERE
UNITED STATES
AND CANADA
ONE CENT
FOREIGN
TWO CENTS

THIS SIDE FOR MESSAGE

THIS SIDE FOR ADDRESS

You and your friends are
cordially invited to attend the
Last Fox Chase at

"The Little Shack on the Corner"

**ON FRIDAY,
FEBRUARY 2, 1912,**

(GROUND HOG DAY.)

Turkey dinner from 2 to 3
o'clock p. m. Fox dropped
at 3:30. Lancaster-Terre Hill
cars pass the door.

Yours truly,

J. P. RUTTER.

NEW HOLLAND HOUSE,
New Holland, Pa.

PRESIDENT'S POSTCARD

Dear LCPCers,

Thanks for making the January meeting a pleasure for me with just a touch of heart-burn afterward.

Don't forget to participate in the **SHOW AND TELL** with informative and/or entertaining remarks! Valentine season should bring out the loveable side in us, so I'm sure the program will sparkle.

I hold all members in high esteem, but especially those who took on responsibilities for this year. A lot of input fosters satisfactory output.

Yours with high hopes,

Dot

LOCAL POSTCARD SENTIMENT

Addressed to Kinzers P.O., Lanc. Co., Pa.-
Dear Friend Ellis,

Think of me every time you look in this little book. I send my love and best regards to you. I hope I will see you on next Sat. night at the Gap(PA). I pressed your flowers you gave me. I will try to keep them as long as you live. From your best friend, Olive.

Inside the attached 'book' on the postcard-

Leaves may wither, flowers may die

Friends may forget you, but never will I.
...Don't look your eyes out at this book.
Don't let no one read this book or they might think I am dippy.

From your best friend, Olive S. _____ to
Ellis E. _____

I send my love and best regards. Ans.
soon. Keep this as long as you live.
(Undated. Unknown Ger. publisher)

THE CARD STAFF

Editor Jim Ward Staff Charles Griffiths

Artist Jim Rudisill Correspondence to:

P.O.Box 300, Lititz, PA 17543-0300.

Indexes available to THE LCPC NEWSLETTER.

Years 1990 and 1991. Both for 50¢ plus SASE.

Complete years -1990, 1991. \$5 each, both \$9.

AUCTION ACTION

Thanks to our auctioneer **Darvin Rodgers** and his assistant, **Phil Nissley**. Also Auction Chrm. **Walt Mowrer** and his team - **Bud Heim, Jere Greider** and **Barb Mowrer**. Next auction is April. Lots must be in by **March meeting!**

JAN. AUCTION - PRICES REALIZED (lot, price)

1 5	29 6	57 .25	85 6	113 4.50
2 6	30 .50	58 6	86 20	114 3.50
3 2	31 4	59 1	87 1	115 1
4 2.50	32 .25	60 1.50	88 4	116 3
5 2	33 1	61 1	89 1.50	117 1.50
6 .50	34 2.50	62 1	90 4	118 1
7 1	35 2.50	63 .50	91 5	119 --
8 .25	36 5	64 .50	92 5	120 3
9 4.50	37 5.50	65 3.50	93 2.50	121 10
10 .50	38 2	66 2.50	94 .25	122 11
11 .25	39 4	67 2	95 5	123 4
12 .25	40 7	68 1.50	96 36	124 3.50
13 .25	41 5	69 1.50	97 80	125 6.50
14 1	42 10.50	70 4	98 .50	126 6
15 .25	43 4	71 .75	99 .25	127 3
16 1	44 6	72 1.50	100 2	128 3.50
17 .25	45 3	73 3.50	101 4	129 4
18 8	46 6	74 3	102 7	130 4
19 5	47 17.50	75 3.50	103 .50	131 4
20 .25	48 12	76 1	104 1	132 2
21 .50	49 4	77 1	105 2	133 9
22 .25	50 8	78 1	106 12	134 5
23 1	51 1	79 .25	107 1	135 6
24 .25	52 .50	80 .25	108 .75	136 8
25 .50	53 2	81 4	109 15	137 3
26 .25	54 22.50	82 10.50	110 4	138 2
27 1	55 4	83 6	111 5	139 1
28 5	56 3.50	84 1	112 12.50	140 1
Total sale.....				\$645.00
10% comm. to LCPC				64.50
LCPC member lots..				\$256.25
A. Althouse lots...				388.75

