

THE CARD – Vol. 23, No. 6, Issue 260, June 2012

A Publication of the Lancaster County Postcard Club, Lancaster, PA

Enjoying postcards through education and entertainment.

Next Meeting: June 18, 2012. Farm & Home Center. Buy, Sell and Trade from 4:30. Meeting - 7 PM.

Yearly membership is \$10 (\$5 for each additional member at the same address.)

Membership chairman: Richard Pendergrast, 950 Willow Valley Lakes Dr., I-506, Willow Street, PA 17584.

Club website: www.playle.com/clubs/lanaster or Google search: Lancaster County Postcard Club.

MAY MEETING

Business

Thirty-one (31) members signed in. Barbara Mowrer gave the Treasurer's Report. The balance in the treasury as of May 21, 2012 was \$1,454.34. Member news – Win Schurz is doing well after a recent hospitalization for heart problems, Shirley Summers hopes to become active in the club again soon and Jim Ward is on the mend after a heart attack. Dorothy Fry, LCPC Member #59 died May 21, 2012. Dot played a major role in strengthening the early components of LCPC. An avid reader, she encouraged growth of our library. As a colorful speaker, she inspired members to present monthly programs and with her background in teaching, girl scouts and 4-H, she saw potential in many of us – and encouraged us to become a leading postcard club 20 years ago. Poor health kept Dot from attending meetings in recent years but she kept in touch thru *The Card*, reminiscing with members who found time to visit. She was a genuine treasure and will be missed. Expo – Jere Greider (chair) needs help in setting up for the show on Friday evening, August 17th. Please contact him if you can help. Al Schaub won \$12.50 in the 50-50 drawing.

Program

The program for the evening, lead by Mark Arbogast, was devoted to a consideration of the Club's finances. Mark presented a) a summary of his review of LCPC's financial situation, which shows a decline in the treasury's balance and b) proposals put forth by the board to improve our fiscal health. A general discussion followed Mark's presentation during which several additional ideas were offered.

Ways To Increase & Decrease Expenses

Annual Savings

- Increase membership dues to \$15 a year. + \$750 a year.
- Find a less expensive location to meet. Assume \$50 or \$90 a month. Would save \$1320 or \$840 a year. Church? Fire Hall? Community Building?
- For Expo, move boards to lobby and use space to sell 5 more tables at \$50 each. + \$250 a year.
- No monetary award for monthly competition. Save \$140 a year.
- Continue doing newsletter monthly at this time. Send out by email, assume save half the cost of mailing. Save \$720 a year.

Total Annual Savings - \$3180 or \$2700.

One Time Items

- Sell the remaining Windows, Vol 2 books. 200 book at \$10 each is \$2000.
- Do a special one-time fundraiser of members to help get our finances back in shape. Assume yields \$1000.

Total one-time savings - \$3000.

JUNE MEETING

The scheduled June program – "America at Night in the Golden Age of Picture Postcards" has been cancelled. W. Earl Long's wife, Rachel, is in Hospice care. Instead - Mark Arbogast, Vice President, will continue the discussion on the Club's income and expenses. ***A vote on these cost-savings & income-raising measures will take place at this meeting. Please plan to attend. Your opinion matters!

MAY POSTCARD COMPETITION

Four (4) members participated in the board competition on the subject "Costumes".
First: Ruth Moyer University Gals
Second: Harold Moyer Early 20th Century Attire
Third: Bob Kramer Too Much Dutch
Honorable Mention: Gisela Withers Costumes of Czechoslovakia

**Single card competitions - submissions are limited to one per entrant.

Future Subjects

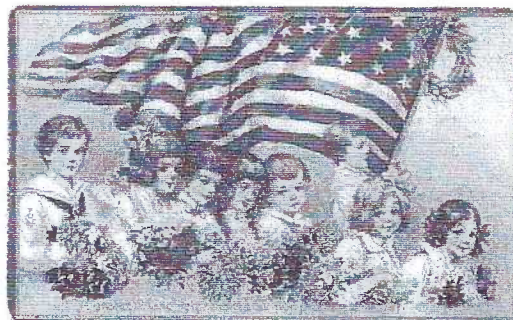
June: Energy - single card

July: Seafood - single card

Future Shows

June 16 – York Postcard Club's 22nd Annual Show; 2000 Locks Rd., York, PA 8:30-4:00

July 21 - Allentown Summer Paper Show 1929 Chew Street, Allentown, PA 9 to 6



June 14th is Flag Day

Helen's Country Store

Antique Mecca in Bainbridge, PA

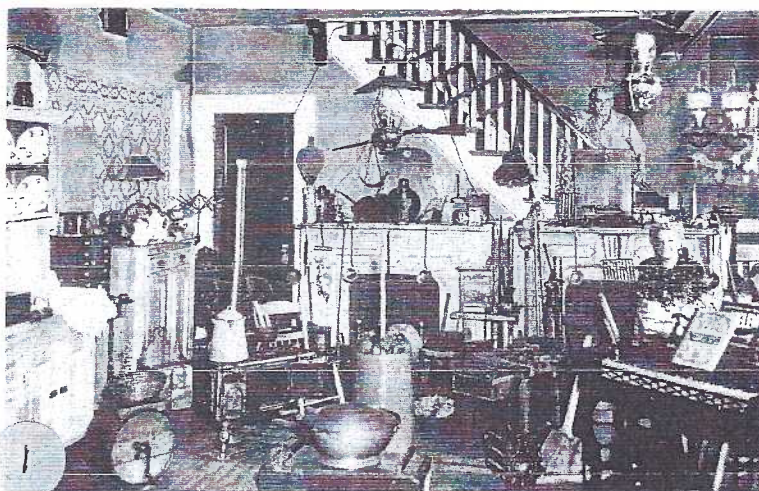
There must be an LCPC member who knew Helen Jourdet, owner of Helen's Country Store in Bainbridge. Let's hear from you with anecdotes about Helen for a future CARD.

We do know that Helen S. Jourdet was born Jan. 13, 1896 and died Nov. 13, 1962. This information comes from a modest tombstone in the Bainbridge Cemetery. One card has its back, "Charlie on steps." There is no Chas. Jourdet buried next to Helen, so likely he was a friend.

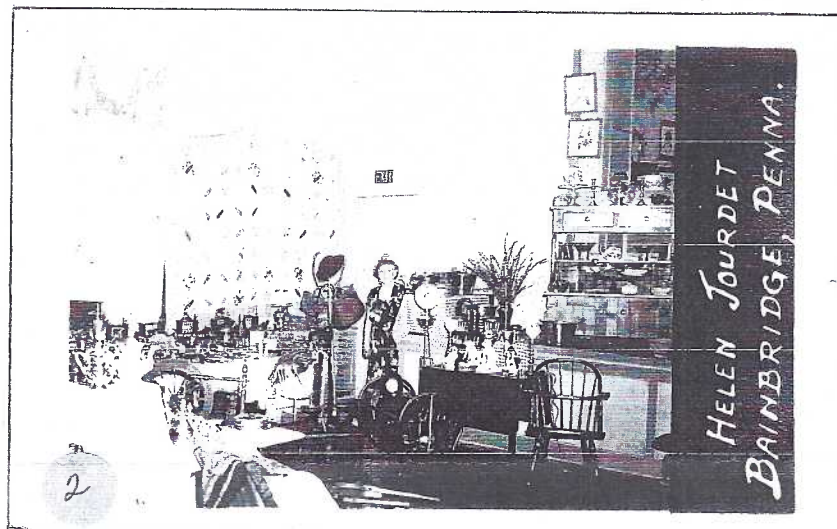
We've seen these five RP postcards and one photogravure card (#1) of Helen's Country Store. Stamp boxes place the time photo cards in the 1940s and 1950s. The store seems confined to one room in her home, however large name cards seen in these views suggest Helen may have sold at antique shows.

The cards are all unused, so placing them in a time sequence has been merely a pastime.

#1 "Charlie" is on the stairs. Helen stands between a small spinet (?) and two large wooden mantels. The inventory is very different from the next five views.



HELEN'S COUNTRY STORE, BAINBRIDGE, LANCASTER COUNTY, PA.



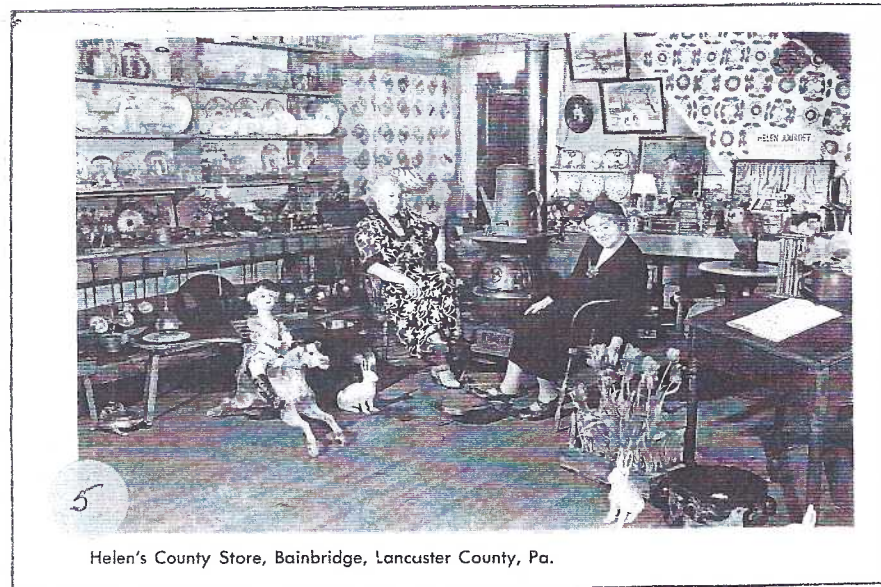
#2 Helen's name is written into the negative. Compared to later photos, this inventory seems meager. It features a baby cradle, a Franklin-type stove, and a Windsor chair on the floor. A modest Helen stands back next to the door.

#3 Helen, now front and center, stands between a pot-bellied stove and two ubiquitous captain's chairs. We also see a hay fork, a writing desk and doll or baby clothing hanging overhead. Tall shelving occupies the left wall and two long tables are laden with antiques.



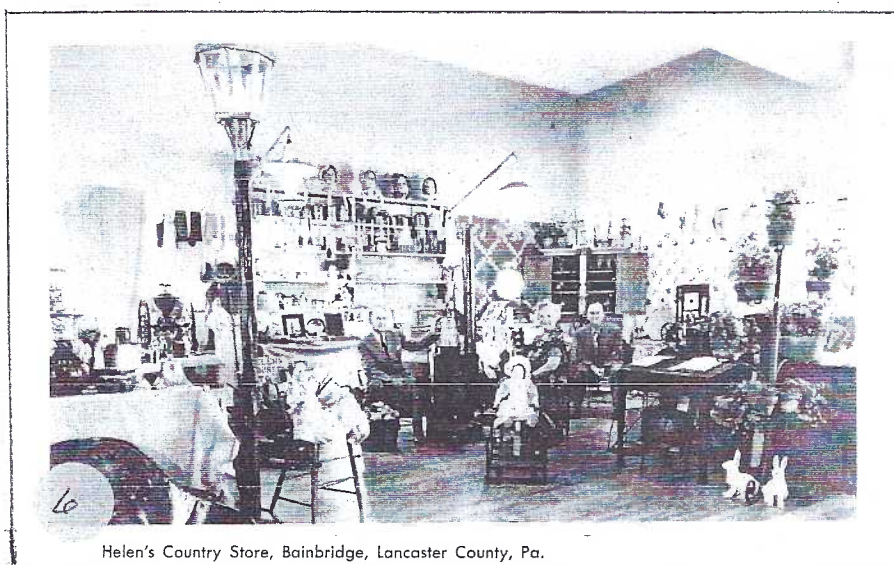


#4 This view was likely taken in the same hour as #3, but now Helen is posed with a customer; both in the captain's chairs and holding books or albums. The camera has shifted to the right, showing more of the stairway.



Helen's County Store, Bainbridge, Lancaster County, Pa.

#5 Helen sits with the same lady (match her shoes and hat) as on PC #4. Different quilts cover the walls; a doll rides a hobby horse. Tulips, still growing in a wooden flat, suggest it must be close to Easter.



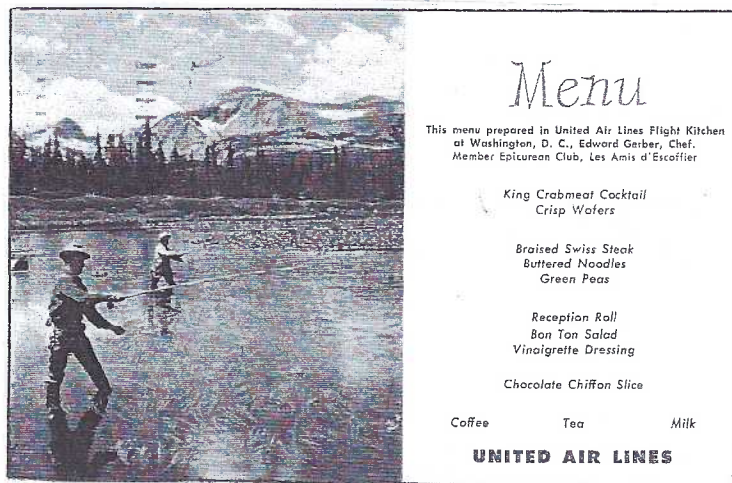
Helen's Country Store, Bainbridge, Lancaster County, Pa.

#6 Helen sits with two gentlemen. The rabbits have found refuge near a plant pole. More dolls and doll heads are seen. The desk is still there. Did she price it high enough that it conveniently served her to write up sales? This card was on E-bay in February; asking price was \$9.99.

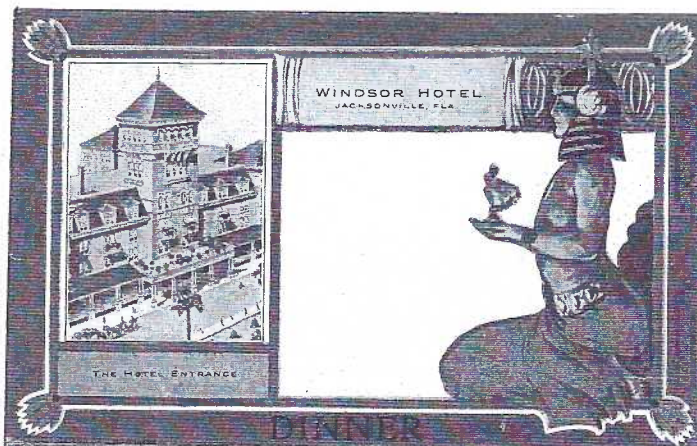
The Postcard Menu

As a stay-at-home, I can't speak for present day menus for the traveler, but I was always told that even in local restaurants, "the bigger the menu, the higher and the prices" which is no longer true. Most of my menus are giant signs before you reach the drive-thru window.

Looking for **postcard menus** is not much of a challenge. Most dealers file them as a separate subject, so you can exhaust your hunt at a show in short order. Finding menus in good condition is a challenge, since old menus are often 2, 3, and 4 times the size of a regular PC and so seldom survive.



The newest menu we show here was used on the **United Air Line** in 1959. (That's over 50 years ago, believe it or not!) The menu "was prepared in the UAL flight kitchen at Wash., DC, Edw. Gerber, Chef, member Epicurean Club." Braised Swiss steak, crabmeat cocktail, salad, and cake were offered. Harold, the writer, would have racked up plenty of air miles had they been offered back then. "Julia and I went to the theater in NYC last evening. I attended a meeting in DC today; am now flying to Chicago for mtg. tomorrow. Wish these trips would bring me to York,"



Souvenir Mailing Menu

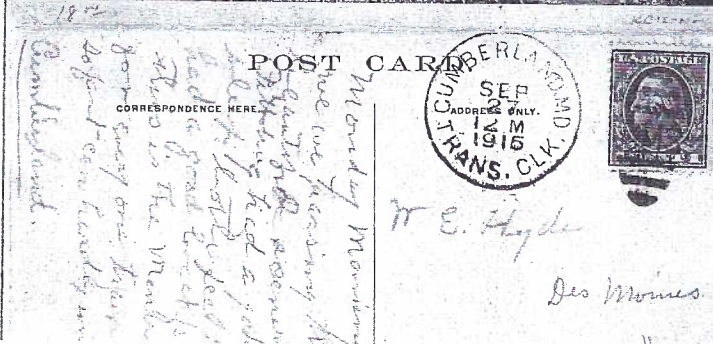
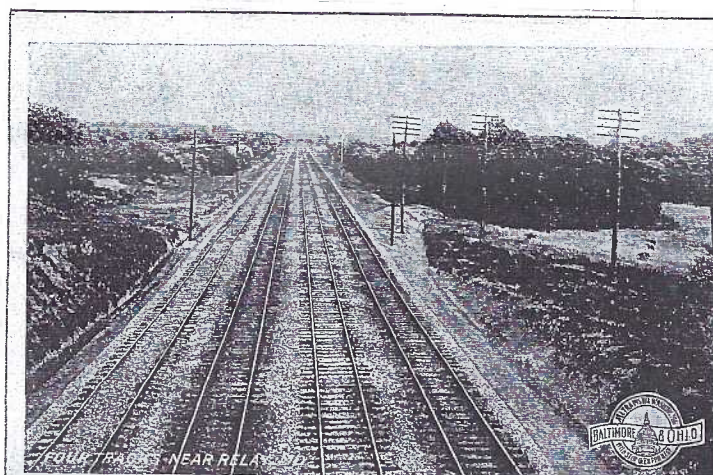
Oysters on Half Shell
Anchovies sur Canape
Chicken Bouillon au Pates
Celery
Filet of Red Snapper, Lemon Butter
Pommes Victoria
Broiled Mullet Beurre Noir
Potatoes Julienne
Boiled Ham with Cabbage
Grilled Sweetbreads, Swiss Sauce
Tenderloin of Beef, Brussels Sprouts
Compote of Pears, Brandy Sauce
Prime Ribs of Beef au Jus
Turkey Stuffed, Currant Jelly
Mashed Potatoes
Steamed Rice
Buttered Beets
New Spinach
Green Peas
Stewed Tomatoes
Egg Plant
Fruit Punch
Civet of Teal Duck
Salad Water Cress
Waldorf Salad
New England Suet Pudding, Hard and Brandy Sauce
Green Apple Pie
Lemon Custard Pie
Petit St. Honore, Glace au Chocolat
Gateau Assortes
Metropolitan Cake
Rose Cream Kisses
Jordan Macaroons
Harlequin Ice Cream
Roquefort and American Cheese and Crackers
Mixed Nuts and Raisins
Fruit
Confectionery
Tea
Coffee


EXTRA COPIES OF THIS MENU FOR MAILING CAN BE HAD FROM HEAD WAITER. SEE OTHER SIDE
March 4, 1906.

Windsor Hotel, Jacksonville, Florida offered this menu three times the size of a regular PC. Variety was evident on the hotel's Souvenir Mailing Menu for March 4, 1906 "extra copies for mailing can be had from the head waiter." Oysters, anchovies, chicken and terrapin soups, filet of red snapper, boiled ham w/cabbage, beef tenderloin, stuffed turkey, civet of teal duck, New England suet pudding with hard and brandy sauce, and a host of desserts incl. harlequin ice cream. It was mailed Mar. 4, 1906 to MI.

Four Tracks near Relay, MD.

The Baltimore & Ohio Railroad menu is twice the size of a regular PC and mailed as a fold-over. "Monday morning, Sept. 26. We are passing thru Penn. Beautiful scenery east of Pittsburgh. Had a good night's sleep. Both feeling fine. Had a good breakfast - this is the menu souvenir for everyone. Train running so fast can hardly write. Ma & Pa." The PC has a Cumberland Transit Clerk postmark for Sep. 27, 12 M, 1915. Breakfast was oatmeal, ham or bacon w/eggs, hashed browns, rolls, muffins, and beverages for 50¢.





"Sunshine Belt to the Orient"

DINNER D'ADIEU
TO OUR CANAL ZONE PASSENGERS

S. S. COLOMBIA
Captain A. R. Huiler, Commode Voyage No. 31 Outward

MENU

Appetizers
Fruit Cocktail Cakes of Cheese Queen Olives Pearl Onions

Soup
Green Turtle Consommé à la Royale

Poached King Salmon, Sauce Hollandaise

Baked Sugar Cured Ham with Champagne Sauce
Filet de Mignon au Champignons

Pear Fritters, Wine Sauce

Roast Prime Ribs of Beef, Yorkshire Pudding

Roast California Turkey with Cranberry Sauce

Boiled Potatoes Mashed Potatoes Boiled Rice
Green Peas Fried Parsnips

Sauté: Lettuce with Tomato in Mayonnaise
Assorted Cold Cuts with Potato Salad to Order

Pastries and Desserts
Golden Pudding with Strawberry Sauce Pear Pie Assorted Cakes
California Ice Cream with Wafers

Fresh Fruit in Season Nuts California Raisins Dries

Cheese
Rougefort, Pineapple, Oregon, Edam, American and Toasted Crackers
Tea, Coffee, Chocolate

After Dinner Coffee Served on Deck or in Smoking Room

After departure from Cristobal, C. Z. Wines & Liquors will be stocked for sale to passengers

Friday, Sept. 14, 1923 R. W. Humphreys, Chief Steward

This PC was published by **Pacific Mail Steamship Co.**, "Sunshine Belt to the Orient." Dinner d'Adieu (parting dinner) - To our Canal Zone passengers on the **S. S. Columbia**, Voyage 31 out-ward." The menu is three times regular postcard size. A colorful scene tops the menu that offered these entrees: poached king salmon, sugar cured ham, filet mignon, ribs of beef, and roast turkey as well as a variety of side dishes and desserts. "After departure from Cristobal, CZ, wines and liquors will be for sale to passengers." The postmark is unclear (the postage stamp was removed) but the receiving cancel is Glendale, CA, Sept. 28, 1923.

MENU

SOUPS
Mahogany, O. Ex. Cock Les.
Dressed Herring, Nettle Herring, Two-Eyed Stuck, So-jer, Billingsgate Potent, Winkles.

FISH
Broken Ice, Mashed Potatoes, Baked Ice, Baked Ice, TONGUES - Old Maid's Vinegar Sauce, Captain Lettuce's Castle Sauce, Mother-in-law, Son-in-law Stew, Wile's Tongue, Pie Sauce, Hunkler's Jaw.

OLD DORIES
Old Maid's Vinegar Sauce, Captain Lettuce's Castle Sauce, Mother-in-law, Son-in-law Stew, Wile's Tongue, Pie Sauce, Hunkler's Jaw.

VEGETABLES
Coke, a la Yellow Bay, Potatoes, Sweet Corn, a la Half Sauce, Turkey, stuffed with Rabbet Shores, (fine made) stuffed with Cotton, Gorse, stuffed with Red Flamed and Combings, Chicken, Forty-Eight Year Old, Money Turning, Pink and Test, Big Leaf, Little Leaf, Out-of-Work, Worry Willie.

DESSERTS
Ble Beans, Hackbeans, Sweet Corn, a la Half Sauce, Turkey, stuffed with Rabbet Shores, (fine made) stuffed with Cotton, Gorse, stuffed with Red Flamed and Combings, Chicken, Forty-Eight Year Old, Money Turning, Pink and Test, Big Leaf, Little Leaf, Out-of-Work, Worry Willie.

DRINKS
Tea Water, Soft Water, Hot Water, Cold Water, Hard Water, Shakes Water, Salt Water, Dil Water, Baked Omelette, Hair Oil.

SMOKERS
London's Best, Broomfield, Fogler, November Fog, Sheffield, Widen.

CONCIERGE
H. & C. H. LONDON.

Someone had a bone to pick with either hotels or menus in general. Here's a comic menu. Publ. by H&CH, London.



HOTEL ST. CATHERINE ON THE OCEAN FRONT - CATALINA

Hotel ST. CATHERINE
ROBERT FOEHL, MANAGER

LUNCHEON

CHILLED CUCUMBERS RIPE OLIVES CORN RELISH
PUREE OF VEGETABLE EN TASSE
STEAMED CALIFORNIA WHITEFISH, CELERY SAUCE
MASHED POTATOES

BRAISED RUMP OF BEEF WITH ITALIAN MACARONI
FRIED BELGIAN HARE, MINNESOTA WILD RICE
SMOTHERED SQUAB CHICKEN, CORN FRITTERS
SPECIAL BAKED LIMA BEANS, BROWN BREAD
ROAST MIDDLE RANCH FIG, CANDIED SWEET POTATOES

STEAMED POTATOES MASHED POTATOES
STRING BEANS GARDEN PEAS CARROTS IN CREAM

COLD SERVICE
CALIFORNIA SALMON DOMESTIC GARDENS TRUFFLE SAUSAGE
BOILED OX TONGUE, POTATO SALAD
HEARTS OF LETTUCE, ST. CATHERINE DRESSING
CATALINA HEADCHEESE, GREEN TOMATO RELISH
FROZEN EGG NOG WITH CAKE
STEAMED FRUIT PUDDING PEACHES IN SYRUP

PINIENTO, CUPID CHIPS
TEA COFFEE MILK BUTTERMILK
AFTER EVERY MEAL - WRIGLEY'S

BREAKFAST 7 TO 9, LUNCHEON 12 TO 2, DINNER 6:30 TO 8
SERVICE TO ROOMS 50 CENTS EXTRA FOR EACH PERSON
VEGETABLES DAILY FROM THE WRIGLEY CATALINA GARDENS
SUNDAY, AUGUST 16, 1931

CATALINA ISLAND

Hotel St. Catherine on the ocean front has the granddaddy of menu postcards. It's four times regular PC size, has a gorgeous colored border with a colored view of the hotel. Three sections of the reverse are a detailed list of "Things to do at Catalina" and the remaining quarter is a d/b postcard mailed to Phila. from Avalon, CA on 8/31/31. The "luncheon" on Sunday, Aug. 16, 1931 featured steamed Calif. white fish, rump of beef, fried Belgian hare, smothered squab chicken, special baked lima beans, and roast Middle Ranch pig. Cold service/food was also available along with desserts incl. frozen egg nog w/cake. "After every meal - Wrigley's (gum). Service to rooms 50¢ extra. Vegetables daily from the Wrigley Catalina Gardens."

